

1935

ILLUSTRATED CATALOGUE

AND PRICE LIST

OF

UPHOLSTERY TRIMMINGS,
SMALLWARES, &c.



LONDON WAREHOUSE :

DALTON, BARTON & Co., LTD.

MANUFACTURERS,

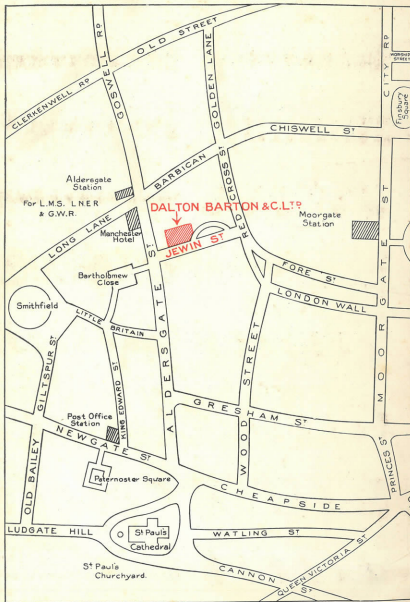
49, 50, 51, 52, Jewin Street,
LONDON, E.C.1.

Works : St. Nicholas Mill, Coventry.

ALL PRICES SUBJECT TO THE FLUCTUATIONS OF
THE MARKET WITHOUT NOTICE.

Telegraphic Address.
"Coteline, Barb, London."

Telephone Number.
National 6922.



THIS CATALOGUE CANCELS ALL PREVIOUS LISTS.

DALBAR
FABRICS

- 1935 -

DALBAR
TRIMMINGS

PRICE LIST
OF
UPHOLSTERY TRIMMINGS
AND
SMALLWARES.

For other Departments for Piece
Goods, &c., see pages 38 & 42-47

DALTON, BARTON & CO., LTD.
49, 50, 51, 52, JEWIN STREET,
LONDON, E.C.1.

WORKS: ST. NICHOLAS MILL, COVENTRY.

The prices quoted are subject to the fluctuations of the market without notice.

INDEX.

Artificial Silk, Repps and Brocades ... 44
Back Strapping ... 10-12
Blind Holland ... 46
Bolster Cases ... 46
Bone Curtain Rings ... 39
Bookshelf Edging ... 37
Borders, Curtain ... 24
Brackets, Casement Rod ... 41
Bricks, Chair ... 5, 24
Brails, Curtain and Pelmet ... 23
Brocades ... 43-44
Buckram ... 38
Bullion Fringes, Artificial Silk ... 26
Buttons ... 10
Calicoes, Upholsterers' ... 38
Canopy Fringes, Cotton ... 36
Canvas ... 38
Chair ... 38
Carpet Binding ... 10
Carpet Strapping ... 10
Cases, Book ... 41
Cases, Bed and Mattress ... 41
Cases, Bolt and Mattress ... 6
Cases, Chair ... 5, 24
Cases, Canvas ... 40
Cases, Cord ... 4
Cases, Gimp ... 5, 6
Cases, Hoarding (Leather) ... 4
Cases, Ruching ... 4
Cases, Webs ... 7
Caneoside Ropes and Fittings ... 40
Chairs ... 40
China Matting Binding ... 10
Clip Wood Edgings ... 32
Cloth, Union ... 32
Cocoa Matting Binding ... 43
Cocoas Matting Binding and Chair Springs ... 9
Cord Casement Loops ... 30
Cords, Blind ... 17
Cords, Casement ... 17
Cords, Chair ... 4

Corns, Curtain and Cushion ... 4, 6
Furniture ... 16
Fringes ... 7
Gimp ... 44
Gimp Mats ... 44
Cotton Casement Loops ... 30
Duck ... 40
Drapery Cord ... 40
Webs ... 12
Wools and Waddings ... 9
Covers, Table ... 44
Mattress ... 46
Curtain Brails ... 24
Edgings ... 20-25
Heading Webs ... 12
Holders and Loops ... 30, 31
Hooks and Rings ... 13, 15, 39
Rings, Bone ... 39
Rod Brackets ... 41
Curtains, Chemise ... 39
Door ... 46
Cushion Tassels and Rosettes ... 28, 29
Cut Lengths of Trimmings ... 27
Danmarks ... 43
Desk and Table Top Lining ... 37
Diaper Tick Binding ... 46
Door Curtains ... 46
Double London Worsted ... 28, 29
Drapery Tassels and Rosettes ... 29
Draught Excluder ... 41
Draw Tapes ... 13, 14
Druggut Pins ... 46
Duck Cotton ... 46
Edging, Bookshelf and Library ... 37
Edgings, Casement ... 23
Curtain ... 20-25, 32
Wood Clip ... 32
Emergency Rope Holders ... 40
Endless Fashlight Cones ... 16
Excluder, Draught ... 41
Extending Casement Rods ... 41
Fancy and Furniture Cords ... 4, 6
Furniture Gimps ... 6
Fringes ... 30
Furber Binding, Endless ... 16
Feather Bed Cases ... 47
Felts, Wool ... 43
Fittings for Barrier and Handrail Rope ... 40
French Nails, Brass, &c. ... 38
Fringes, Bullion ... 26
Casement ... 33
Cotton Ball ... 33
Cotton Canopy ... 36
Curtain ... 30
Fancy ... 36
Rug ... 34, 35
Tassel ... 36
Wood Clip Ball ... 32
Furnishing Cloth, Artificial Silk ... 43, 44
Furniture and Fancy Cords ... 4, 6
Gimps ... 5, 6
Nails ... 38
Fastians, Pillow ... 45
Gathering Tape, Rufflette ... 14
Hanging, Tri-Peak ... 13
Gimp, Fancy Furniture and Scroll ... 5, 6
Pins ... 38
Glacé Lines ... 17
Handrail and Barrier Rope ... 40
Heading Webs ... Fittings ... 40
Hessians ... 38
Holders, Curtain ... 31
Holders, Knot ... 40
Hollands, Window ... 46
Hooks and Loops ... 9

INDEX—continued.

Hooks and Rings, Curtain ... 39
Rufflette and Tri-Peak ... 13, 15
Jaspe Cloth ... 43
Jean Mattress Covers ... 47
Knot Holders ... 16
Labels, Mattress and Address Woven ... 19
Laces, Blind ... 46
Casement and Insertions ... 46
Ladder Webs ... 11
Leader Worsted ... 11
Leather Binding ... 6
Initiation ... 6
Leathers: Moroccoes, Roams, Hides, &c. ... 42
Lettered Carpet Back Strapping ... 19
Tick and Mattress Binding ... 19
Library Edging ... 37
Lines, Blind ... 17
Glass ... 17
Sash ... 16
Thread ... 17
Lining, Upholsterers' Chair ... 37
Linedam Brads ... 38
London Double Worsted ... 11
Loops, Casement Curtain ... 30
Curtain ... 30, 31
Mats, Cork ... 42
Skin and Mohair ... 41
Matting Binding, Check ... 10
China ... 10
Cocoa ... 10
Napier ... 10
Mattress Bindings ... 19
Lettered ... 19
Cases ... 47
Covers ... 47
Piping ... 8
Tacks ... 45 & 47
Tufts, Cotton and Wood ... 8
Leather ... 8
Labels, Woven ... 19
Twines ... 37
Measures, Yard ... 41
Mock Wash, Tick Binding ... 8
Mousettes ... 43
Nails, French, Brass, &c. ... 38
Napier Matting Binding ... 10
Needles, Upholsterers' and Mattress ... 37
Carpet ... 37
Nosing Webs, Stair ... 10
Pelmet Tassels and Rosettes ... 28, 29
Brails and Edgings ... 20-25
Fringes ... 20-25
Pillow Cases ... 47
Fustians ... 45
Ticks ... 45 & 47
Pins, Druggut ... 43
Gimp ... 38
Piping Cords, Cotton ... 7
Mattress ... 9
Pleading Tape ... 13, 14
Hooks ... 13, 15
Plumettes ... 43
Poplins ... 43
Pulls, Blind ... 16
Shade Blind ... 17
Railway Lines ... 18
Repps ... 43-44
Rings and Hooks, Curtain ... 13, 15, 39
Bone ... 39
Rufflette ... 15
Cord Casement ... 41
Rollers, Spring Blind ... 16
Rope Barrier and Handrail ... 40
Fittings ... 40
Ropes, Bell ... 37
Rosettes and Tassels ... 28
Ruching and Edging, Chair ... 4

Rufflette Tape ... 14
Hook and Rings ... 15
Rug Bindings ... 35
Fringes ... 34, 35
Rugs, Mohair ... 42
Skin ... 42
Sash Lines ... 11
Scrims ... 36
Scott's Gimps ... 6, 6
Serges ... 43
Shadow Tassels ... 44
Skin Rugs and Mats ... 42
Snap Fasteners ... 9
Spindle Webs ... 11
Spring Blind Rollers ... 46
Casement Rods ... 41
Springs, Coppered, Chair, Mattress, &c. ... 9
Spir Nosing Webs ... 10
Strapping, Back ... 10
Oxford ... 10
Ladders ... 19
Stairs and Buttons ... 8
Swansdown ... 45
Table and Desk Top Lining ... 37
Covers ... 37
Tacks ... 38
Taffetas ... 14
Tape, Rufflette ... 14
Tri-Peak ... 13
Tapestries ... 33
Tarpsulin ... 38
Tassel Fringes ... 36
Tassels, Blind ... 18
Pelmet and Drapery ... 28, 29
Tennis Rosettes ... 28
Tennis Web ... 11
Thread Lines ... 17
Webs ... 11
Threads, Carpet ... 7
Machine ... 8
Tick Bindings ... 45, 8
Ticks, Bed and Mattress ... 45, 8
Blind and Verandah ... 46
Tray Web, Butlers' ... 10
Tri-Peak Tape ... 13
Tufts, Cotton and Wool ... 8
Leather Mattress ... 10
Twines, Mattress and Upholsterers' ... 17
Twisted Railway Curtain Lines ... 17
Upholsterers' Calicoes ... 38
Chair Linings ... 38
Twines ... 38
Velours ... 43
Velveteen ... 43
Velours ... 43
Venetian Blind Lines ... 17
Ladder Web ... 11
Verandah Ticks ... 46
Waddings and Cotton Woods ... 9
Waxed Lambris ... 45
Webs, Venetian Thread ... 10
Butlers' Tray ... 10
Chair ... 43
Cotton ... 12
Heading ... 12
Ladder ... 11
Lander, Worsted ... 11
Spindle ... 11
Stair Nosing ... 39
Tennis ... 11
Window Hollands ... 46
Wood Clip Ball Fringes ... 41
Edgings ... 32
Felts ... 43
Woven Address Labels ... 49
Mattress Labels ... 19
Yard Measures ... 41

FANCY FURNITURE and CUSHION CORDS.

A LARGE RANGE OF COLOURS KEPT IN STOCK. 4/36'S

777 Quality 21/- per gross.



755 Quality 25/- per gross.



WARWICK Quality 32/- per gross.



RUTLAND Quality 45/- per gross.



New Empire 7/6 per doz. yards.



Meteor 8/6 per doz. yards.



Sunbury Quality, Worsted .. 39/- per gross.



No. 80 Crêpe Cord 24/- gross.
In 18 yard pieces.



Lustre Quality, Cushion Cord. 36/- per gross.



No. 165 9/- per gross.



The Welbeck Cord 21/- per gross.



The Welbeck Rope 66/- per gross.
½ inch. In 18 yard pieces.



CHAIR RUCHINGS.

In pieces of 36 yards.

No. 533 BRUSH RUCHE .. 19/6 per gross.



No. 1630 ROLIO RUCHE .. 36/- per gross.



No. 1134 RAYON and COTTON. 40/- per gross.
Ready piped and with flanges for sewing.



No. 93 UN CUT MOQUETTE. 48/- per gross.
Ready piped and with flange for sewing.



The above Nos. 533, 1630, 1134 and 93 are offered in stock colours only.

GOOD QUALITY RUCHINGS for special orders made in your own colours.

C 20. In pieces of 36 yards. 7/3 per doz. yards. C 22. In pieces of 36 yards. 9/3 per doz. yards.
10d. per yard for shorter lengths. 1/- per yard for shorter lengths.



The Prices quoted are subject to the Fluctuations of the Market.

GIMPS and CHAIR BRAIDS.

A LARGE RANGE OF COLOURS KEPT IN STOCK. 4/36'S

THE "WELBECK" BRAID



25/6 per gross yards.



Royal Gimp 48/- per gross.



Argyle Gimp 54/- per gross.



Straton Gimp 52/- per gross.



Victor Gimp 32/- per gross.



Imperial Gimp 27/- per gross.



Ideal Gimp 28/- per gross.



Scroll Gimp, A1 Quality .. 44/- per gross.



Scroll Gimp, No. 7 Quality .. 36/- per gross.



No. 9. Quality SCROLL GIMP. In all colours .. 24/- per gross.
COVENTRY MADE. THE BEST VALUE ON OFFER.



Scroll Gimp, No. 8 Quality .. 24/- per gross.



Scroll Gimp, C Quality .. 20/- per gross.



Scroll Gimp, S Quality .. 15/- per gross.



Chair Braid, No. 32 7/9 per gross.



The Prices quoted are subject to the Fluctuations of the Market.

FANCY FURNITURE GIMPS.

4/36's.

A large range of colours kept in stock.

	Art. Silk	Per gross.
The Imperial.	..	27/-
" Ideal.	Worsted make for Moquettes, etc.	28/-
" Victor.	Art. Silk, etc.	32/-
" Sheraton	" " "	52/-
" Royal	" " "	48/-
" Argyle	Art. Silk. Best make	54/-

See page 5 for illustrations.

FURNITURE AND FANCY CORDS.

4/36's.

A large range of colours kept in stock.

165 Quality	per gross	9/-
777	"	21/-
755	"	25/-
Warwick	"	32/-
Rutland	"	45/-
Sunbury	"	30/-
Welbeck Cord	"	21/-
Welbeck 1/2-inch Rope	in pieces of 18 yards	per gross 66/-

See page 4 for illustrations.

SCROLL FURNITURE GIMPS.

4/36's.

A very large range of colours kept in stock.

	Per gross.
S. Special Quality. All Cotton	15/-
C Quality. Artificial Silk and Cotton	20/-
No. 9	24/-
No. 8	24/-
No. 7	36/-
A1	Silk and Cotton 44/-

See page 5 for illustrations.

FLAT CHAIR GIMPS.

No. 3 Cotton Fancy Chair Braid,	per gross	7/9
Glance Single Shot	"	14/-
" Double Shot Super	"	17/-
Imperial, Art. Silk	"	27/-
No. 3 Super Flat Silk	"	52/-

CHAIR BANDINGS.

In pieces of 36 yards, one gross in a Box.

1/2-INCH AMERICAN CLOTH.

Quality AX	Plain, in papers, per gross	4/9
" AX	" boxes	5/3
" A	" " "	5/9
" B	" " "	9/-
" C	" " "	9/9
" AX	Spanish Grains	5/3

1/2-INCH IMITATION LEATHER. JEWIN BRAND.

Quality N, in papers, per gross	Plain Colours.	Antique Colours.
" W	4/11	4/11
" L	5/-	5/3
" Super, boxed	10/-	10/-

1/2-INCH PEGAMOID.

Quality M, Boxed	per gross	7/2
" AX	"	9/9
" AX	"	12/6
" A	"	15/6
" B	"	25/-
" AX	Antique effects	10/3

1/2-INCH REAL LEATHER. PLAIN.

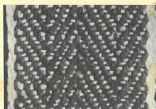
Quality No. 1	per gross	50/-
" super	"	60/-

1/2-INCH REAL LEATHER. TWO GILT LINES.

Quality No. 1	per gross	75/-
" super	"	85/-

Leather-covered Chair Moulding.
Prices on application.

D., B. & Co.'s CHAIR WEBS. STANDARD QUALITIES.



	12 2 inch.	14 2 1/2 inch.
BLACK and WHITE.	per gross.	per gross.
J Quality	11/-	12/-
SN	12/6	13/6
RX	15/-	17/-
2R	16/-	18/-
E	17/-	18/6
H	Linen Weft	19/-
LW	"	26/-
A	All Linen	26/-

STRIPED CHAIR WEBS.

	Per gross.
G4 3 stripe, 1 1/2-in.	5/6
G3 " 2 " heavy	7/9

PLAIN CHAIR WEBS.

	Per gross.
P6 2-inch extra close	8/6
P7 2 " " "	10/9
P10 3 " " "	12/6

D., B. & Co.'s

RELIABLE UPHOLSTERERS' AND MATTRESS TWINES AND LAID CORDS.

In 3 lb. pkts.		In 6 lb. pkts.	
No.	Per doz. lbs.	No.	Per doz. lbs.
7	Extra Fine Quilting	13	6 Fold Fine Flax Spring
26	" Super Long Flax Mattress	39	" " " " " "
37	" " " " " "		" " " " " "
47	" " " " " "		" " " " " "
76	3 Fold " " " " "		" " " " " "
45	3 Fold Fine Flax Mattress		" " " " " "
46	4 " " " " " "		" " " " " "
70	3 Extra Super Long Hemp Mattress		" " " " " "
92	3 Fold Flax Mattress		" " " " " "
306	3 " " " " " "		" " " " " "

LAID CORDS in 6 lb. packets.

372	Pure Italian Hemp Laid Cord	17/-
350	" " " " " "	17/-
201	" " " " " "	12/6
201	" " " " " "	12/6
401	" " " " " "	12/6
201	Hungarian Hemp Laid Cord	9/9
401	" " " " " "	9/9

The Prices quoted are subject to the Fluctuations of the Market.

The Prices quoted are subject to the Fluctuations of the Market.

BUTTONS AND STUDS.

	Per great gross.
American Cloth, Ordinary and Fancy Grains	8/6
Imitation Leather, all makes, Ordinary and Fancy Grains	8/6
" " Jewin Brand	8/6
Real Leather	22/6
Cretonne, best	11/-
" second quality	10/-
Tapestry, best	18/6
" second quality	17/6
Wool Repp	24/-
Corduroy	21/-
Velvet	24/-

Sizes for Studs and Buttons.



16 line. 18 line. 20 line. 24 line.

Solid Leather Studs 3/2 per thousand.

COTTON TWILL DIAPER TICK BINDINGS.

Blue and White, and in all colours for Belgian Ticks.

No. 1 Quality per gross 4/-

Super per gross 5/3

Best Mock Wash Tick Binding 3/-

MATRESS PIPING.

In all plain colours.



Super Quality 4/11 per gross.
A Quality 3/11 "

SUPERIOR QUALITY LEATHER MATRESS TUFTS.



No. 2.



No. 4. French.



No. 3.

Size No. 2 per lb.	Assorted. Buff. Hide.		
	10d.	1/4	1/4
" " 3	11d.	1/4	1/4

LEATHER TUFTS IN BUNDLES.

Size No. 2 per box	Assorted. Buff. Hide.		
	1/9	2/1	2/4
" " 3	1/11	2/4	3/-
Large French No. 4	5/-	5/6	6/-

WOOL MATRESS TUFTS.

Large Size.



Wool, small, White per gross 1/6
" medium, White per lb. 5/-
" large, Super Quality, fully bleached, per gross 2/4 or " 9/-

COTTON MATRESS TUFTS.

Cotton, small, per gross 1/4 or per lb. 14/-
" large 1/10 " 8/6
" medium " 5/-

D., B. & Co.'s PATENT WADDINGS.

In 12-yard pieces.

	Best Quality.	Grey.	Black.	Bleached.
No. 28	1/7	—	—	—
" 30	1/8	1/10	3/2	—
" 32	2/-	2/2	3/4	—
" 36	2/8	2/10	4/6	—
" 44	3/3	3/5	5/-	—
" 54	3/6	3/8	5/8	—
" 64	3/11	4/1	6/3	—

D., B. & Co.'s COTTON WOOL.

Upholsterers' Superior Quality.

No. 0 (Grey only)	Per lb. Packet. Grey. Black. Bleached.		
	9d.	—	1/6
" 1	11d.	—	1/6
" 2	1/2	1/3	1/10
" 3	1/5	—	2/-

D., B. & Co.'s

BEST COPPERED SPRINGS.

These are made from the best Tempered Wire, well Coppered, properly balanced and finished with Double Turned Ends. This, with their low price, makes them the best value on the market.



Height. Gauge.	Per Gross.	Height. Gauge.	Per Gross.
4x13	4/4	7x11	7/10
4x12	5/3	7x10	9/7
4x11	5/8	7x9	10/1
4x10	6/11	7x8	14/2
4x9	7/8	7x7	16/-
5x13	5/-	8x10	10/6
5x12	5/11	8x9	10/10
5x11	6/4	8x8	15/-
5x10	7/11	9x10	10/9
5x9	8/8	9x9	11/9
5x8	11/3	9x8	15/6
6x13	5/4	9x7	15/-
6x12	6/8	10x9	12/6
6x11	7/2	10x8	16/6
6x10	8/6	10x7	19/9
6x9	9/7	12x9	16/9
6x8	12/6	12x8	18/3
7x12	7/1	12x7	21/6

Grosses packed in bags. Bags free.

Carriage paid on 10 gross of at least £5 value.

THE EAGLE PATENT COTTON WADDING.

In 12-yard pieces.

No. 0 Quality	42	42	42	42	Grey.
" 2	"	42	"	"	3/3
" 2	"	52	"	"	3/9
" 4	"	62	"	"	4/1
" 2	"	52 Swan	"	"	5/6
" 2	"	52 Swan	"	"	3/7

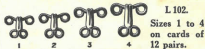
COTTON WOOL.

B. QUALITY.

B 4	Per lb. Packet.		Grey.
	9d.	11d.	
B 5	—	—	11d.
B 6	—	—	1/-
B 7	—	—	1/2

NEWY'S PATENT SAFETY HOOKS & LOOPS.

FOR LOOSE COVERS.



7/11 per gross cards.



8/6 per gross cards.

NEWY'S PATENT SNAP FASTENERS.

FOR LOOSE COVERS.

Note the hole locates correctly.

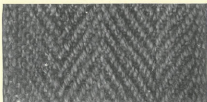


18/- 18/- 18/- 21/- 30/-

PER GREAT GROSS.

On cards of 36 in boxes of 1 gross.

**COCOA MATTING
BINDING.** 4.36's.



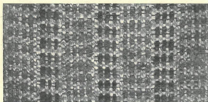
3 inch. No. 1 Quality per gross 15/-
3 " Super " 17/-

NAPIER MATTING BINDING.
In Plain and Mixed colours.



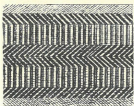
3 inch. Super Quality per gross 18/-
2 1/2 " Fancy Matting " 11/6

**CHECK INDIA MATTING
BINDING.**



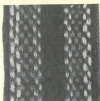
3 inch. Super Check for India
Matting per gross 15/-

CHINA MATTING BINDING.



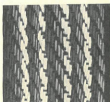
In all the leading colours.
1 1/2 inch. Extra Quality per gross 17/-
2 " " " " " 22/6

CARPET BINDINGS.



Super Quality. 19 Chain per gross 10/6
" " 21 " " 15/-
" " 29 " " 18/6

CARPET BACK STRAPPING.
D., B. & Co.'s IMPROVED
MAKE.



12 pieces of 12 yards per packet.

No. 0 Quality per gross 7/9
No. 1 " " 9/-
No. 2 " " 10/-
No. 3 " " 11/-
Mixed Linen Strappings, 4.36 Rolls 14/6
Nos. 10 and 11. Extra Super Back
Strapping, 4.36's Rolls 21/-

**THE "OXFORD" BACK
STRAPPING.**

1 1/2 inch. 4.36's per gross 13/6

STAIR NOSING WEBS.

3-in. 4-in. 4 1/2-in.
No. 1 Quality .. per gross 40/- 52/- 60/-
No. 2 " " " 44/- 56/- 62/-
In pieces of 36 yards.

BUTLERS' TRAY WEBS.

3 Stripes, per piece of 15 yards 5/-
4 " " " 15 " 5/4
5 " " " 15 " 6/-
In either Green, Crimson, Blue or Scarlet Stripes.

The Prices quoted are subject to the Fluctuations of the Market.

DOUBLE LONDON.

1/2 inch. Super Worsted per gross 10/-

SUPER WORSTED LEADER.

1 1/2 inch. Fine make per gross 24/-

**D., B. & Co.'s BEST VENETIAN
THREAD WEBS.** 6.24's.

1/2 in. 3/4 in. 1 in. 1 1/4 in. width.
4/6 5/9 6/6 7/9 per gross.

1/2 in. 1 in. 1 1/2 in. 1 3/4 in. width.
9/- 10/- 11/- 12/6 per gross.

1 1/2 in. 1 3/4 in. 1 7/8 in. 2 in. width.
13/6 14/6 18/6 22/- per gross.

Prices for Brown, Duck and White.

BEST FLAX TENNIS WEB.

4 in. 48/- per gross.

In pieces of 24 yards.

SPINDLE WEBS.

	3"	3 1/2"	1"	1 1/4"	1 1/2"	2"
No. 1 Quality	8/6	9/6	11/-	13/-	14/6	19/-
Super "	9/6	11/-	12/6	15/-	17/-	21/6

Stocked also 1/2", 1", 1 1/4", 1 1/2", 1 3/4", 2 1/4" and 3".

Prices in proportion.

**LIST OF SIZES FOR LADDER
WEBS.**

A size measures	Distance between Laths.	Length of Straps.
B	1 1/2 inch	2 1/2 inch
C	1 1/2 "	2 1/2 "
D	2 "	2 1/2 "
E	2 1/2 "	2 1/2 "
F	2 1/2 "	3 "
G	2 1/2 "	3 1/2 "

The Prices quoted are subject to the Fluctuations of the Market.

D., B. & Co.'s PATENT WOVEN

VENETIAN LADDER WEB.

GUARANTEED QUALITY AND ACCURACY OF GAUGE. 2/72's



BETA QUALITY.

Duck only. Sizes C, D, E per gross 28/-

D., B. & Co.'s

SPECIAL QUALITY.

Duck. In all sizes per gross 32/-
Brown " 33/-
White " 35/6
Buff " 39/-
Green " 40/-

CARR'S STAMPED QUALITY.

Duck. In all sizes per gross 36/-
White. " " " " " 41/-
Brown, " " " " " 46/-
Buff, " " " " " 46/-
Green, " " " " " 50/-

COTTON WEBS.

FOR CURTAIN HEADINGS AND BACK STRAPPING.

THOUSANDS OF GROSS ALWAYS IN STOCK.

The "MARVEL."
1½-inch.
7/9 per gross.



The "MAGNET."
1½-inch.
12 - per gross.



The "EMPIRE."
1½-inch.
12 6 per gross.



The "RENOWN."
1½-inch.
14 - per gross.



The "VILLA."
For Casement
Curtains, etc.
1-inch.
5/3 per gross.
1-inch.
7/- per gross.



Stocked in 1½-inch in the full range and in 1-inch in all colours except those marked X.

The Prices quoted are subject to the Fluctuations of the Market.

The SUPER "TRU-PLEAT" TAPE

WITH EXTRA STRONG DRAW-CORDS.

THE BEST VALUE IN ALL GATHERING TAPES.

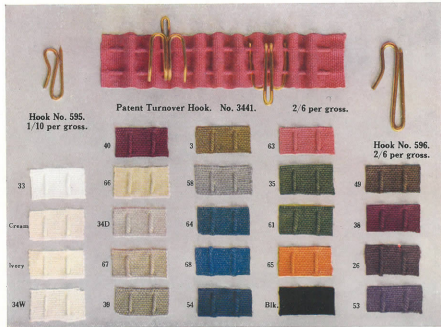
It is the BEST QUALITY and produces the MOST EVEN PLEATS.



1½-in. 9/6 per gross.



1½-in. 16/6 per gross.



The Prices quoted are subject to the Fluctuations of the Market.

THE
Rufflette
PATENT



**CURTAIN PLEATING TAPE
AND TURNOVER HOOKS.**



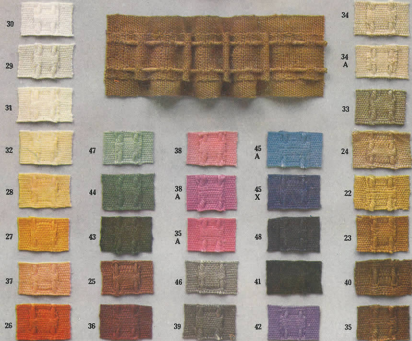
FIXED PRICE.

3-in. 21/- per gross.
1-in. 27/6 " "
1 1/2-in. 33/6 " "



Made up in
36 yards in a carton.

4 cartons in a
rigid gross box.



The Prices quoted are subject to the Fluctuations of the Market.

THE
"Rufflette"
BRAND



HOOKS WHICH FIT WITHOUT STITCHING TURNOVER FASHION
INTO THE WOVEN-IN POCKETS OF THE TAPE.



R 6

3/- per gross.



R 7

2/9 per gross.



R 14

2/6 per gross.



R 15

3/- per gross.



R 77

3/- per gross.



R 21

2/- per gross.



R 10

2/4 per gross.



R 23

2/4 per gross.



R 100

9/- per gross.



R 2

2/6 per gross.



R 24

R 24. 4/- per gross.
R 25. A larger size.
5/- per gross.



R 3

2/9 per gross.



R.20.

3/- per gross.

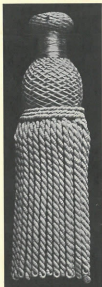
TIDY. 16/- per gross.

TIDY for Pleating Cords of Rufflette Tape. For 5 gross lots supplied loose in boxes, customer's name and town printed on free of charge. Under 5 gross an extra charge of 2/6 per gross.

NOTE.—THE RUFFLETTE PATENT CURTAIN TAPE is sold only on condition that it is used with the RUFFLETTE CURTAIN HOOKS, which are patented and registered.

The Prices quoted are subject to the Fluctuations of the Market.

BLIND TASSELS.



"New Diamond."
28/- per gross.



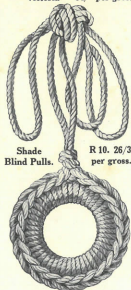
"Victoria" 54/- per gross.



"Belgian."
22/- per gross.



The "Dainty."
54/- per gross.



Shade
Blind Pulls. R 10. 26/3
per gross.



The "Ajax." Blind Pull.
32/- per gross.

BLIND TASSELS

Maisonette ..	per gross	16/9
Belgian	" "	22/-
New Diamond ..	" "	28/-
M 2	" "	48/-
Victoria	" "	54/-
Dakar	" "	66/-

ALL IN 1-GROSS BOXES.

OTHER QUALITIES:

R 12. 16/3 gross.	R 7. 28/3 gross.
R 11. 17/6 "	R 5. 30/- "
R 8. 25/- "	R 4. 31/3 "

POM POM BLIND PULLS.

Ajax	per gross	32/-
Pax	" "	34/6
Paris	" "	42/-
Dainty	" "	54/-

ALL IN 1-GROSS BOXES.

The Prices quoted are subject to the Fluctuations of the Market.

LETTERED CARPET BACK STRAPPING.

WITH NAME AND ADDRESS WOVEN IN ANY COLOURS.

ORDINARY QUALITY.				SUPER QUALITY.					
		Black & White.	Fancy Colours.			Black & White.	Fancy Colours.		
For 4 gross	per gross	16/-	18/-	For 4 gross	per gross	18/-	20/-
" 8	"	"	15/9	17/9	" 8	"	"	17/9	19/9
" 12	"	"	15/6	17/6	" 12	"	"	17/6	19/6
" 24	"	"	15/3	17/3	" 24	"	"	17/3	19/3

Super Quality.



Ordinary Quality.



LETTERED MATTRESS BINDING.

WITH NAME AND ADDRESS WOVEN IN.

Made in Blue and White, Red and Cream, Blue and Drab and Green and Drab.



For 12 gross	For 24 gross	For 36 gross yards.
15/-	14/9	14/6

WOVEN MATTRESS LABELS. WOVEN ADDRESS LABELS

In any design, colour or size.

of all descriptions.

Prices on application.

Own samples quoted for.

The Prices quoted are subject to the Fluctuations of the Market.

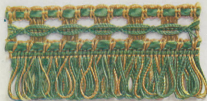
LAY-ON BRAIDS, WITH EDGINGS TO MATCH.

All in pieces of 36 yards. One Penny per yard extra for cut lengths.
EACH DESIGN KEPT IN A FULL RANGE OF COLOURS.

The "BELMONT." Artificial Silk.
BRAID 2/- per doz. yards.



EDGING 3/9 per doz. yards.



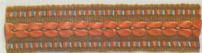
The "STANLEY." Artificial Silk.
BRAID 3/- per doz. yards.



EDGING 5/6 per doz. yards.



The "LUDLOW." Artificial Silk and Cotton.
BRAID 2/6 per doz. yards.



EDGING 3/6 per doz. yards.



The "CROMER." Cotton.
BRAID 2/6 per doz. yards.



EDGING 4/- per doz. yards.

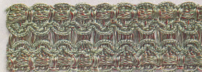


The Prices quoted are subject to the Fluctuations of the Market.

LAY-ON BRAIDS, WITH EDGINGS TO MATCH.

All in pieces of 36 yards. One Penny per yard extra for cut lengths.
EACH DESIGN KEPT IN A FULL RANGE OF COLOURS.

The "RAGLAN." Artificial Silk.
BRAID 5/6 per doz. yards.



EDGING 7/- per doz. yards.



The "SAVOY." Artificial Silk.
BRAID 4/- per doz. yards.



EDGING 6/- per doz. yards.



The "AVON." Artificial Silk.
BRAID 5/- per doz. yards.



EDGING 7/6 per doz. yards.



The "LEDBURY." Artificial Silk.
BRAID 3/- per doz. yards.



EDGING 6/- per doz. yards.



The Prices quoted are subject to the Fluctuations of the Market.

LAY-ON BRAIDS, WITH EDGINGS TO MATCH.

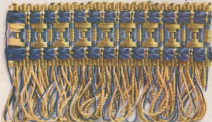
All in pieces of 36 yards. One Penny per yard extra for cut lengths.

EACH DESIGN KEPT IN A FULL RANGE OF COLOURS.

The "STANHOPE." Artificial Silk.
BRAID 5/- per doz. yards.



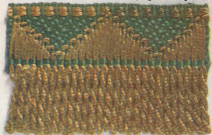
EDGING 7/6 per doz. yards.



The "TALBOT." Artificial Silk.
BRAID 5/- per doz. yards.



EDGING 9/- per doz. yards.



The "CARLTON." Artificial Silk.
BRAID 5/- per doz. yards.



EDGING 8/6 per doz. yards.



The "RICHMOND." Artificial Silk.
BRAID 5/6 per doz. yards.



EDGING 9/6 per doz. yards.



The Prices quoted are subject to the Fluctuations of the Market.

ANTIQUE BRAID

Artificial Silk and Cotton.
in a full range of colours.

No. 588 per gross 16/-



No. 434. 1/2-inch per gross 18/-



No. 634. 1/2-inch per gross 24/-



No. 29. 1/2-in. 22/- per gross. 1-in. 24/- per gross.
In 1/2-in. and 1-in. in Silver and in Old Gold.



TINSEL BRAID. Black and Gold.

1/2-in. 29/-, 1/2-in. 33/-, 1/2-in. 39/-, 1-in. 48/-, 1 1/2-in. 63/- per gross.



FANCY ARTIFICIAL SILK BRAID.

No. 535 In ranges of bright colours Per gross 24/-



No. 596 Per gross 19/-



CASEMENT EDGING.

Cotton. Clip Head.
In plain colours only.

The ROSINA per gross 18/-



The CAMEO. Clip Head per gross 20/-
IN GUARANTEED FAST COLOURS.



ARTIFICIAL SILK FRINGES.

In pieces of 36 yards.

In a large range of plain and shaded colours.

The BELLE. 1/2-inch per gross 30/-
3/4d. per yard for cut lengths.



The SAPPHIRE. 1-inch per gross 32/-
4d. per yard for cut lengths.



The Prices quoted are subject to the Fluctuations of the Market.

FOR MAKING FOR SPECIAL ORDERS IN YOUR OWN COLOURS.

BRAIDS.

FOR CURTAINS, PELMETS, CHAIRS, DIVANS, ETC.

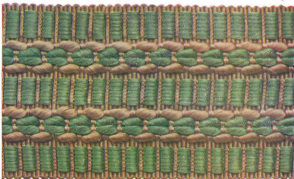
All in Artificial Silk and Cotton.

BRAID No. 351.

Width 1½" 2" 2½"

Price per yard for :

36 yds. & over	1 2/8	2 4/8
18 to 35 yards	1 9/8	2 9/8
6 to 17 "	2/-	2 4/8
Under 6 "	2 3/8	2 8/4

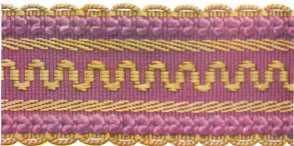


BRAID No. 352.

Width 1½" 2"

Price per yard for :

36 yards and over	1/4	1 8/8
18 to 35 yards	1/11	2/1
6 to 17 "	2/3	2 6/8
Under 6 "	2/6	3/4

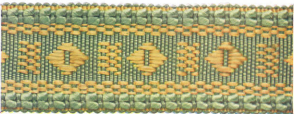


BRAID No. 353.

Width 1½ inches.

Price per yard for :

36 yards and over	1/5
18 to 35 yards	2/-
6 to 17 "	2 4/8
Under 6 "	2 8/8

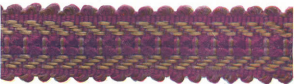


BRAID No. 354.

Width 1" 1½"

Price per yard for :

36 yards and over	1/-	1 3/8
18 to 35 yards	1/3	1 11/8
6 to 17 "	1/5	2/1
Under 6 "	1/9	2/4



Samples on application.

The Prices quoted are subject to the Fluctuations of the Market.

FOR MAKING FOR SPECIAL ORDERS IN YOUR OWN COLOURS.

FRINGES.

FOR CURTAINS, PELMETS, CHAIRS, DIVANS, ETC.

FRINGE No. 355.

All Cotton.

Width 2 inches.

Price per yard for :

36 yards and over	2/-
18 to 35 yards	2 4/8
6 to 17 "	2 7/8
Under 6 "	3/-



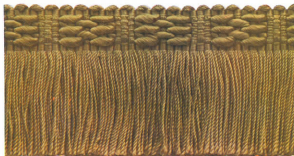
FRINGE No. 356.

Artificial Silk and Cotton.

Width 2 inches.

Price per yard for :

36 yards and over	1 8/8
18 to 35 yards	2 1/8
6 to 17 "	2 6/8
Under 6 "	3/-



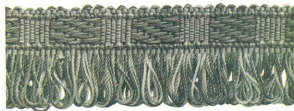
FRINGE No. 357.

Artificial Silk.

Width 1½ inches.

Price per yard for :

36 yards and over	1 2/8
18 to 35 yards	1 8/8
6 to 17 "	2/-
Under 6 "	2 4/8



FRINGE No. 358.

Artificial Silk.

Width 1½ inches.

Price per yard for :

36 yards and over	1 2/8
18 to 35 yards	1 8/8
6 to 17 "	2/-
Under 6 "	2 4/8



Samples on application.

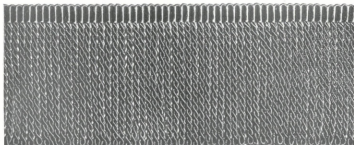
The Prices quoted are subject to the Fluctuations of the Market.

BULLION FRINGES.

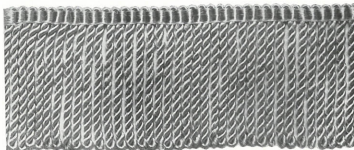
In pieces of 36 yards.

No. 6049.
Artificial Silk
and Cotton
Bullion Fringe.
In Plain Colours.
1½-inch
2/11½ per doz. yds.
2-inch
3/11 per doz. yds.

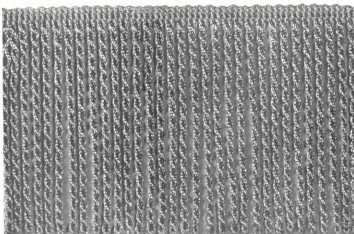
Cheaper Quality.
No. 206. 2-inch.
2/4 per doz. yards.



No. 4952.
2-inch
Artificial Silk
and Cotton
Bullion Fringe.
6/6 per doz. yards.
In Plain or
Mottled Colours.



TRICOTINE.
Bullion Fringe.
Artificial Silk.
In Plain Colours.
1½-inch
5/- per doz. yards.
2-inch
6/- per doz. yards.
3-inch
9/- per doz. yards.



CUT LENGTHS OF TRIMMINGS.

In response to a general call for the above we are meeting this by cutting the following qualities at prices stated below.

SCROLL GIMPS.

Nos. 8 and 9 Qualities, 3d. per yard. A1 Quality, 5d. per yard.

FANCY GIMPS.

Sheraton, Royal, Argyle, each at 6d. per yard.

FURNITURE CORD.

Warwick Quality, 4d. per yard.

ARTIFICIAL SILK AND COTTON BRAIDS. Page 23.

No. 29. ¾-inch and 1 inch, both 3d. per yard.
No. 535. ¾-inch 3d. per yard.

ARTIFICIAL SILK FRINGES.

Belle, 3½d. Sapphire, 4d. per yard.

BRAIDS AND EDGINGS, &c. Pages 20 to 22.

Belmont Braid,	3d. per yard.	Belmont Edging,	4½d. per yard.
Ludlow "	3½d. "	Ludlow "	4½d. "
Cromer "	3½d. "	Cromer "	5d. "
Stanley "	4d. "	Stanley "	6½d. "
Ledbury "	4d. "	Ledbury "	7d. "
Savoy "	5d. "	Savoy "	7d. "
Raglan "	6½d. "	Raglan "	8d. "
Stanhope "	6d. "	Stanhope "	8½d. "
Avon "	6d. "	Avon "	8½d. "
Carlton "	6d. "	Carlton "	9½d. "
Talbot "	6d. "	Talbot "	10d. "
Richmond "	6½d. "	Richmond "	10½d. "

ARTIFICIAL SILK AND COTTON BULLION FRINGES.

No. 6049, 5d. 4952, 7½d. per yard.

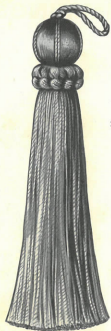
TRICOTINE ARTIFICIAL SILK BULLION FRINGES.

1½-inch, 6d. 2-inch, 7d. 3-inch, 10d. per yard.

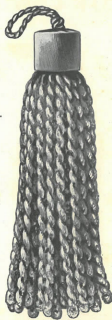
THE ABOVE APPLIES TO OUR STOCK COLOURS ONLY

TASSELS FOR PELMETS, CUSHIONS, &c.

ALL IN ARTIFICIAL SILK.



T 77.
4½ inch.
2/- per doz.



T 76.
4 inch.
3/- per doz.

T 76 and T 77.

In stock colours only, viz.:
Brown, Lt. Green, Dk. Gold, Saxe,
Flame, Lt. Gold, Rose, Tussock.



T 68. 2½ each.

Length of Tassel 2½" Cord 12" Rosette 1½"



T 5. 5/- each.

Length of Tassel 7" Cord 12" Rosette 2½"



T 10. 4/3 each.

Length of Tassel 4½" Cord 3" Rosette 2"

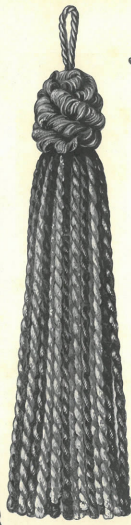
The Prices quoted are subject to the Fluctuations of the Market.

TASSELS FOR PELMETS, CUSHIONS, &c.

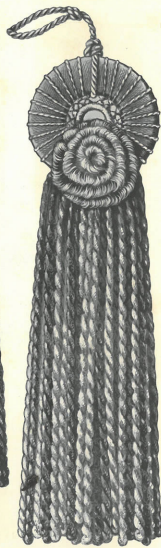
ALL IN ARTIFICIAL SILK.



T 73. 7½ inch. 11/- per dozen.



T 75. 6 inch.
4/- per dozen.



T 74. 7 inch. 11/6 per dozen.

All in the following stock colours only:

Green and Drab, Rose and Drab, Blue and Drab, Plain Dark Gold, Light Gold, Rust.

The Prices quoted are subject to the Fluctuations of the Market.

ARTIFICIAL SILK AND COTTON LOOPS.

FOR CASEMENT OR LACE CURTAINS.



L383. 4/9 per dozen pairs.
Total length 12 inches.
In Cream and colours.



L359. 6/- per dozen pairs.
Total length 12 inches.
In Cream and colours.



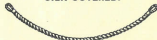
L368. 5/9 per dozen pairs.
Total length 11 inches.
In Cream and colours.

ART. SILK AND COTTON CASEMENT LOOPS.

		Per doz. pairs.
L383	Cream and colours	4/9
L359	" " " " " " " " " "	6/-
L368	" " " " " " " " " "	5/9
L341	.. per dozen pairs	7/6
L314	.. " " " " " " " " " "	7/11
L342	.. " " " " " " " " " "	10/6
L315	.. " " " " " " " " " "	16/-

In any colours to order.

CORD CASEMENT LOOPS. SILK COVERED.



L316. Length 16 inches, per dozen pairs 6/-
In a large range of Plain colours.

CORD CURTAIN LOOPS. IN ALL COLOURS.

No. 2 1/2-inch Cotton .. per dozen pairs 18/-
No. 2 1/2-inch Worsted, fine Cord ends " 21/-

COTTON LOOPS WITH TASSELS.

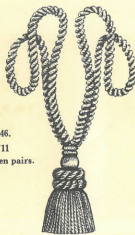
FOR CASEMENT OR LACE CURTAINS.

In White and Cream only.

SAMPLES AND PRICES ON APPLICATION.

The Prices quoted are subject to the Fluctuations of the Market.

WOOL AND SILK CURTAIN HOLDERS.



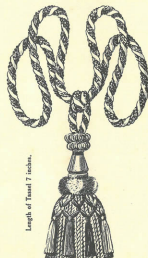
L346.
9/11
per dozen pairs.



L347.
15/-
per dozen pairs.



L372. 36/- per dozen pairs.
Or for special colours to order 4/6 per pair.



Length of Tassel 7 inches.

L363. 42/- per dozen pairs.
Or for special colours to order 5/- per pair.

OTHER SPECIAL QUALITIES,	L345.	L913X.	L340.	L324.	L332.
Per dozen pairs	7/11	14/6	24/6	25/9	40/-

Samples on application.

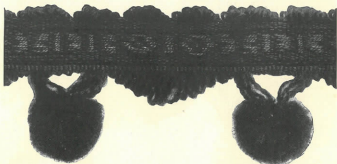
The Prices quoted are subject to the Fluctuations of the Market.

CLIP HEAD WOOL BALL FRINGE.

OUR WELL-KNOWN COVENTRY MAKE.

A LARGE RANGE OF COLOURS KEPT IN STOCK. PIECES 36 YARDS.

THE
"CHESTER."
4/6 per dozen.

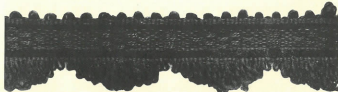


WOOL CLIP HEAD EDGINGS.

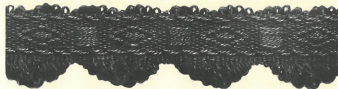
OUR OWN COVENTRY MAKE.

A LARGE RANGE OF COLOURS KEPT IN STOCK. 36-YARD PIECES.

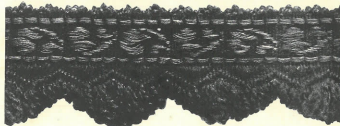
THE
"PLANET."
27/- per gross.



THE
"COMET."
33/- per gross.



THE
"QUEEN."
54/- per gross.



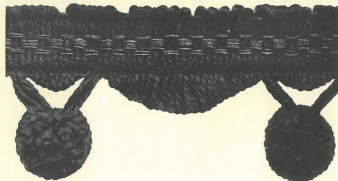
The Prices quoted are subject to the Fluctuations of the Market.

CLIP HEAD WOOL BALL FRINGE.

A LARGE RANGE OF COLOURS KEPT IN STOCK. PIECES 36 YARDS.

THE "DOVER."

2/11 per dozen yards.



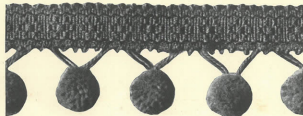
COTTON BALL FRINGES.

36-yard pieces.

THE "ZENITH" Clip Head. 32/- per gross.
In White, Cream and Colours.

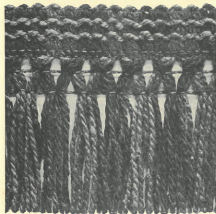


THE "OPHIR" Clip Head. 36/- per gross.
In a full range of Guaranteed Fast Colours.



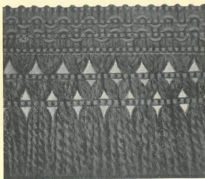
The Prices quoted are subject to the Fluctuations of the Market.

**COTTON RUG FRINGE,
CLIP HEAD.**



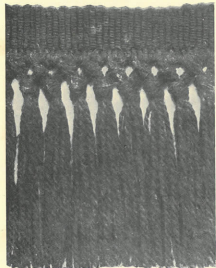
M1257. In plain colours and Chintzes. 2/6 per dozen.
In pieces of 36 yards.

**WORSTED RUG FRINGE,
CLIP HEAD.**



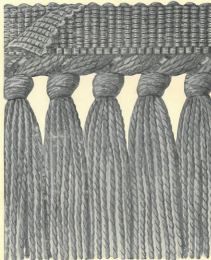
M1275. 2½ inch. In plain colours and Chintzes. 3/8 per dozen.
In pieces of 36 yards.

**WORSTED RUG FRINGE,
CLIP HEAD.**



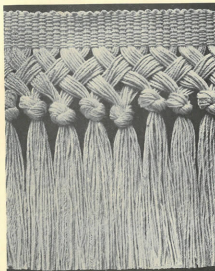
M1266. 3½ inch. In plain and Chintz colours. 5/6 per dozen.
In pieces of 36 yards.

**WORSTED RUG FRINGE,
CLIP HEAD.**



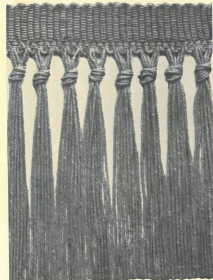
M1254. 4 inch. In plain colours only. 7/3 per dozen.
In pieces of 36 yards.

**HEAVY COTTON
KNOTTED RUG FRINGE.**



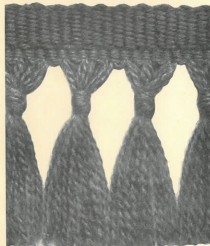
M1255 Plain Drab. Depth 4 inches.
Single Head per dozen 8/11
Clip Head " " 10/9
In pieces of 36 yards.

**CLIPHEAD COTTON
KNOTTED RUG FRINGE.**



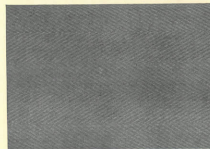
M1259 Plain Drab. Depth 3½ inches .. per dozen 7/-
In pieces of 36 yards.

**WORSTED RUG FRINGE,
KNOTTED. CLIP HEAD.**



M1263. 3½ inches. In plain colours and Chintzes. 8/9 per dozen.
In pieces of 36 yards.

**HEAVY COTTON RUG
BINDING OR STRAPPING,
2 inch.**



In White, Khaki or Drab per gross 15/-
In pieces of 36 yards.

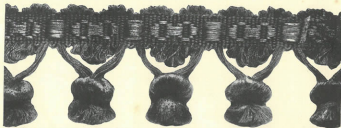
FANCY TASSEL FRINGES.

ARTIFICIAL SILK AND COTTON.

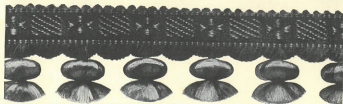
IN STOCK COLOURS ONLY.

IN PIECES OF 36 YARDS.

THE
"ASTER."
4/9 per doz.
yards.

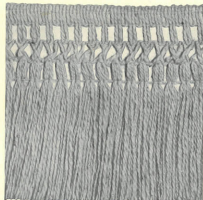


THE "LIDO."
Guaranteed
Fast Colours.
In Plain and
Jaspé Colours.
6/- per doz. yards.

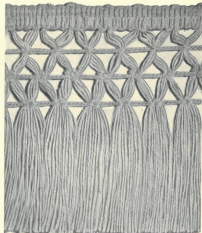


COTTON CANOPY FRINGES.

IN IVORY WHITE.



No. 1. 3-inch. 2/6 per dozen yards.



No. 2. 3½-inch. 3/- per dozen yards.

In pieces of 36 yards.

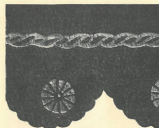
The Prices quoted are subject to the Fluctuations of the Market.

—36—

BOOKSHELF EDGINGS.

In Crimson, Marone, Dark Green, Brown, Olive,
&c., with or without Gilt in the figure.

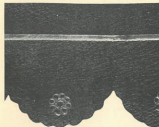
Imitation
Leather,
C design.
3/9
per dozen
yards.
36-yard
pieces.



Imitation
Leather,
"DELTA"
5/-
per dozen
yards.
36-yard
pieces.



Real
Leather,
Star and
Line
design.
16/3
per dozen
yards.
36-yard
pieces.



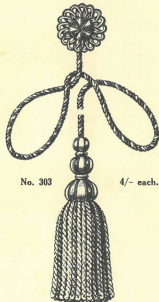
Real
Leather,
The
"BODLEY"
18/-
per dozen
yards.
36-yard
pieces.



Other designs and qualities kept in stock; samples
on application.

BELL ROPES.

Round or Flat, made to order.



No. 303 4/- each.

Round Bell Pulls, No. 303, 4/- No. 54, 3/6 each.
Flat " " " 412, 8/9 " 113x, 6/- "

UPHOLSTERERS' NEEDLES.

(1 dozen in a packet.)
6 8 9 10 12 14 ins.
1/6 1/9 2/- 2/2 2/6 3/3 per dozen.

MATTRESS NEEDLES.

(1 dozen in a packet.)
Straight 6 8 9 10 12 14 ins.
11d. 1/2 1/8 1/10 2/1 2/8 per dozen.
Curved 1½ 2 2½ 3 3½ 4 4½ 5 ins.
7½d. 7½d. 9d. 9d. 10d. 1/- 1/1 1/2 per dozen.

CARPET NEEDLES.

Per packet of 25.
5/- per dozen packets.

DESK & TABLE-TOP LINING.

In Morocco, Roan, Skiver or Pegamoid,
with Gold or Blind Border. In any
size. Prices on application.

The Prices quoted are subject to the Fluctuations of the Market.

—37—

UPHOLSTERERS' CALICOES, SCRIMS, CANVAS, HESSIANS, &c.

In Pieces of 60 yards.

UPHOLSTERERS' GREY CALICO.

Width.		
No. 62. 71/72 ins.	1 1/2 per yard.
" 63. 71/72 "	10d. "
" 64. 71/72 "	8 1/2d. "

UPHOLSTERERS' BUCKRAM.

No. 8. 40 ins.	7 1/2d. per yard.
----------------	-------	-------------------

UPHOLSTERERS' BLACK LININGS.

Width.		
BLACK LINING, No. 670	32 ins.	8d. per yard.
" FLAX No. 30	40 "	1/3 "
" " No. 36	40 "	1/1 "
" STIFF CANVAS	40 "	5 1/2d. "

In Pieces of 100 yards or ends of 50 yards.

UPHOLSTERERS' SCRIM.

No. 1750.. 72 ins.	6 1/2d. per yard
" 1183.. 72 "	8 1/2d. "

UPHOLSTERERS' HESSIANS.

No. 95 72 ins.	6 1/2d. per yard.
" 93.. 72 "	7d. "
" 23.. 72 "	7 1/2d. "
" 22.. 72 "	8d. "
" 22.. 54 "	6 1/2d. "
" 10.. 72 "	11d. "
" 1.. 72 "	9 1/2d. "
" 1.. 54 "	7 1/2d. "

UPHOLSTERERS' TARPULIN.

No. 16.. 72 ins.	10 1/2d. per yard.
" 2.. 72 "	1/- "
" 5.. 72 "	1/3 "

UPHOLSTERERS' BLUED CUT TACKS. "CHAMPION" BRAND.

Fine Blued ..	1/4	1/7	2/1	2/5	2/11	3/2	3/9	1 inch.	
Improved Blued ..	2/6	3/2	3/6	3/11	5/-	5/6			Per pkt. of 10M reputed.
Fine and Improved Blued	65/-	43/6	30/-	27/6	27/-	25/6			Per cwt. in 28 and 56 lb. bags.

THE "RELIABLE" FRENCH CUT TACKS.

Fine Blued ..	1/5	2/1	2/11	3/9	5/3	6/11	8/9	1 inch.	
Improved Blued ..	1/8	2/11	4/5	6/9	8/6	11/9	13/3		per packet of 10M reputed.
Fine Blued ..	121/6	103/-	96/-	92/9	90/-	88/6	87/6		per cwt. in 7 lb. parcels.
Improved Blued ..	106/-	96/-	90/-	88/6	87/6	87/6	87/6		per cwt. in 7 lb. parcels.

BAYONET-POINTED GIMP PINS.

Japanned ..	1/2	1/1	1/-	per lb.
Tinned ..	1/5	1/4	1/3	"
	in 1 lb. packets.			

JAPANNED CUT GIMP PINS.

In 1 lb. packets	7 1/2d. per lb.
---------------------	-------	-----------------

LINOLEUM BRADS.

1/2 inch	5d. per lb.
	In 1 lb. Packets or 7 lb. Bags.	

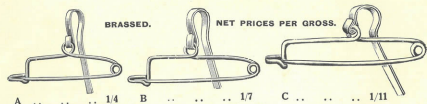
FRENCH NAILS. BEST QUALITY.



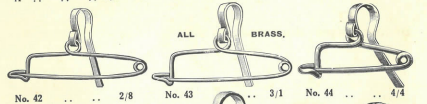
No. 10. No. 12. No. 12 1/2.

Brass ..	4/7	4/11	6/1 per 1,000
Antique ..	4/10	5/1	6/3 "

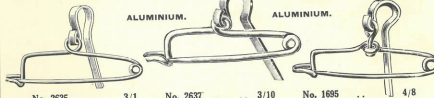
CURTAIN HOOKS.



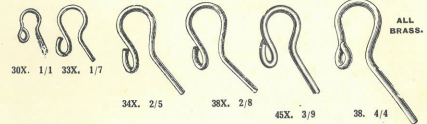
A 1/4 B 1/7 C 1/11



No. 42 2/8 No. 43 3/1 No. 44 4/4



No. 2635 3/1 No. 2637 3/10 No. 1695 4/8



30X. 1/1 33X. 1/7 34X. 2/5 38X. 2/8 45X. 3/9 38. 4/4

BRASS CURTAIN RINGS.

Ordinary Solid.

Sizes	1 1/2	1 1/4	1 1/8	1 1/2	1 1/4	1 1/8	1 1/2	1 1/4	1 1/8	1 1/2	1 1/4	1 1/8	2 ins.
No. 507	509	511	513	515	517	519	521	523	525	527	529	533	
Per gro.	6d.	7d.	9d.	11d.	1/2	1/4	1/7	1/11	2/6	3/2	4/1	5/6	10/-

BEST EXTRA STRONG SOLID BRASS CURTAIN RINGS.

Superior Finish.

Sizes	1 1/2	1 1/4	1 1/8	1 1/2	1 1/4	1 1/8	1 1/2	1 1/4	1 1/8	1 1/2	1 1/4	1 1/8	2 ins.
No. 611	613	615	617	619	621	623	625	627	629	633			
Per gro.	1/3	1/7	2/-	2/4	2/10	3/6	4/10	6/4	8/8	9/4	12/8		

WHITE BONE CASEMENT CURTAIN RINGS.

Lines	26	28	30	32	36	40	42
Per gross	11d.	11d.	1/1	1/3	1/8	2/-	2/3

The Prices quoted are subject to the Fluctuations of the Market.

The Prices quoted are subject to the Fluctuations of the Market.

B DEPARTMENT

RUGS and MATS.

ENGLISH SHEEPSKIN RUGS AND MATS. Lined Felt. Stock sizes.

	29'x10'	30'x12'	4'x2'	4'6"x2'	5'x2'	5'4"x2'3"	6'x2'6"	6'x3'
No. 2 Quality.	6/3	7/11	25/3	28/6	31/9	38/-	47/6	58/6
No. 1	9/3	11/9	37/6	42/-	46/6	56/-	70/6	84/9
Super	11/9	15/-	47/6	53/6	59/6	71/6	89/-	107/-

The above quotations are for Skin measure. Special sizes made to order.

Goat Skin Hearth Rugs.

Size about 5 ft. 3 ins. by 2 ft. 3 ins. Tufted and Wadded, Grey, 12/9 Black, 19/9 each.
Rugs cleaned, repaired and re-dyed at owner's risk.

SPECIAL OVAL SHEEPSKIN RUGS.

Size 42 ins. x 20 ins. 12/9 each.

"The Deebee Curl" Mohair.

Size 30 ins. by 12 ins.	Mats	..	3/1 each.
.. 27 ins. by 54 ins.	Rugs	..	12/2 "
.. 30 ins. by 60 ins.	15/- "
.. 36 ins. by 72 ins.	21/- "

Half Moon and Ovals.

Size 27 ins. by 54 ins.	Rugs	..	13/2 each.
.. 30 ins. by 60 ins.	16/- "
.. 36 ins. by 72 ins.	22/- "

Black, Brown, Gold, Fawn and Blue only.

SPECIAL HALF MOON SHEEPSKIN RUGS.

Size 43 ins. x 22 ins. 12/9 each.
In Black, Brown, Fawn and Gold.

"Dalbar" Non-Slip Back Mohair.

Size 28 ins. by 11 ins.	..	18/11 dozen.
.. 23 ins. by 47 ins.	..	6/6 each.
.. 23 ins. by 54 ins.	..	7/9 "
.. 30 ins. by 64 ins.	..	11/- "

In Black, Brown, Gold, Red, Green and Blue only.

Mohair Mats and Rugs. Stocked in all sizes in various qualities, also with non-slip backing.

Cocoa Fibre Mats. In all sizes and qualities. Special sizes to order.

A.1 Compressed Cork Bath Mats.

	1/2 in.	3/4 in.	1 in. thick.
Size 19 1/2 ins. by 13 ins.	.. 14/9	.. 20/-	.. dozen.
.. 19 1/2 ins. by 15 ins.	.. 16/6	.. 23/6	.. 32/- "
.. 22 ins. by 15 ins.	.. 21/-	.. 28/6	.. 38/6 "
.. 24 ins. by 18 ins.	.. 25/-	.. 34/-	.. 45/- "
.. 27 ins. by 18 ins. 42/6	.. 57/- "
.. 30 ins. by 20 ins. 52/6	.. 65/- "
.. 36 ins. by 24 ins. 75/-	.. 100/- "

A.1 Compressed Cork Table Mats. Round.

4 ins., 1/- 5 ins., 1/3 6 ins., 2/6 8 ins., 3/6 9 ins., 4/6 dozen.

A.1 Compressed Cork Table Mats. Oval.

9 ins. by 6 ins., 2/6 10 ins. by 7 ins., 3/6 11 ins. by 8 ins., 4/6 14 ins. by 10 ins., 7/6 dozen.
(In one dozen parcels.)

Moroccos and Roans stocked in ordinary colours, any special colour to order.

Morocco Hides for Motor work, ordinary colours in stock, special colours to order.

Dyed, Antique and Velvet Hides, any colour to order.

The Prices quoted are subject to the Fluctuations of the Market.

E DEPARTMENT.

TAPESTRIES, DAMASKS, MOQUETTES, VELOURS, &c.

TAPESTRIES.	Cotton, Art. Silk and Cotton	-	from 1/8 1/2 per yard.
DAMASKS.	" " "	-	" 1/1 "
MOQUETTES.	Jaspé, Floral and Modern	-	" 3/9 "
VELOURS.	Plain for Curtains. Fadeless	-	" 2/1 1/2 "
" " " "	Art. Silk, Fadeless	-	" 7/11 "
VELVETS.	48 ins. Mohair and Worsted	-	" 5/11 "
SERGES.	48/50 ins., Union and Wool	-	" 11 3/4 d. "
" " " "	" " "	-	" 1/11 "
PLUSHETTES.	48 ins., Flat Pile Reversible	-	" 1/5 3/4 "
" " " "	50 ins., Super quality, 2/11	-	70 ins. 4/2 "
" " " "	50 ins., " " Reversible	-	4/3 "
WOOL FELT.	72 ins., Crimson, Green, Blue, Brown	-	3/4 "
UNION CLOTH.	72 ins., " " " "	-	for Table Covers, Curtains, etc. - 3/11 "
WOOL BAIZE.	Crimson or Green.		
	36 ins. 40 ins. 45 ins. 54 ins. 72 ins.		
	From 1/4 1/9 1/2 1/10 2/4 2/11		1/2 "
WHITE IRONING BAIZE.	36 ins.	-	- 2/8 "
VELVETEEN.	27 ins. Brown and Blue for Cushions, from 1/8		" "
FURNISHING REPPS.	Wool, Cotton and Wool, Art. Silk Cotton and Wool		" 1/11 "
" " " "	JASPÉ. Cotton	-	- " 9 1/4 d. "
FADELESS POPLINS.	Creams and Ecrus.		
	From 1/2 Colours, from 1/4		" "
CURTAIN BROCADES.	Art. Silk and Cotton.		
	Fadeless - - -		" 1/11 "
ART. SILK TAFFETAS.	Fadeless - - -		" 2/1 "

All the above are piece prices. Extra for cut lengths.

The Prices quoted are subject to the Fluctuations of the Market.

F DEPARTMENT.

CHENILLE CURTAINS (fast to light). Exclusive ranges.
In STANDARD, MORENA, RIANO, DORCHESTER and ARISTON QUALITIES.
Samples on application.



MORENA QUALITY.
O.1423



MORENA QUALITY.
O.1424.

CHENILLE
CURTAINS

48 ins. PLAIN CHENILLE piece goods (fast to light).

SAVILLE QUALITY, 3/10 per yard. ADRIAN QUALITY, 2/6 per yard.

ARTIFICIAL SILK SLUB REPPS and BROCADES.

Guaranteed fast colours.

COTTON CASEMENT CLOTH.

Repp—Plain—Figured. Guaranteed fast colours.

“MOSTYN” REPP.

Suitable for Curtains, Upholstery and Loose Covers. Guaranteed fast to light.

COTTON SHADOW TISSUES.

30 ins. and 50 ins.

CORDUROYS (plain and figured).

27 ins. wide in 5 qualities.

TABLE COVERS 8/4 8/10 8/12 sizes.

Tapestry, Curled Centre Mohair—Fringed Art. Serge.

PLAIN CHENILLE COVERS (fringed).

57 ins. × 57 ins.

60 ins. × 75 ins.

60 ins. × 60 ins.

65 ins. × 65 ins.

65 ins. × 81 ins.

The Prices quoted are subject to the Fluctuations of the Market.

— 44 —

TICK DEPARTMENT.

		Width.	Price.	In pieces or 1/2 pieces.
			10½d.	Pieces 100 yds.
MATTRESS TICKS for WOOL.				
Cotton Fancy Stripes	9504	56 ins.	10½d.	100
“ “ “ “	9539	56 “	12d.	100
“ “ “ “	9546	63 “	15d.	100
“ “ “ “	9572	63 “	18½d.	100
“ “ “ “	9547	63 “	20d.	100
“ Damask	9852	56 “	16d.	100
“ Jaspé	9904	56 “	18d.	100
MATTRESS TICKS for HAIR.				
Heavy Cotton, Fancy Stripes	9548	63 “	22d.	100
“ “ “ “	9543	63 “	24d.	100
Union, Fancy Stripes	9352	63 “	29½d.	100
“ “ “ “	9386	63 “	32½d.	100
Super Union, Fancy Stripes	9318	63 “	34½d.	100
Union, Jaspé	9508	63 “	34½d.	100
“ Check	9330	58 “	34d.	100
“ “ “ “	9330	63 “	36d.	100
ALL LINEN, for WOOL				
“ BROWN ” LINEN, for Hair	9463	58 “	29d.	66
“ “ “ “	9432	58 “	32d.	66
BLUE AND WHITE TICKS.				
Cotton	C8814. E.	56 “	9½d.	100
Cotton, for Feathers	C8826. S.	56 “	12d.	100
“ “ “ “	C8816. E.	56 “	12d.	100
“ “ “ “	C8815. E.	56 “	15d.	80
“ “ “ “	C8829. E.	58 “	18½d.	80
“ “ “ “	C6857. E.	58 “	20d.	90
“ “ “ “	C6857. M.	58 “	20d.	90
“ “ “ “	C8830. E.	58 “	23d.	75
“ “ “ “	C8754. E.	58 “	26d.	75
Union, for Feathers	U7728. E.	58 “	30d.	96
“ “ “ “	U7728. E.R.S.	63 “	32½d.	96
“ “ “ “	U7793. E.	58 “	32d.	75
“ “ “ “	U7730. E.S.	58 “	34d.	75
“ “ “ “	U7730. E.	63 “	37d.	75
All Linen, for Feathers				
“ “ “ “	L6887. E.	58 “	32d.	60
“ “ “ “	L6645. E.	58 “	36d.	60
“ “ “ “	L6703. E.	58 “	40d.	66
“ “ “ “	L9610. E.	58 “	42d.	60
“ “ “ “	L6610. E. & S.	63 “	46d.	60
“ “ “ “	L6616. E.	58 “	45d.	60
“ “ “ “	L6616. E.	63 “	49d.	60
“ “ “ “	CU7758.	36 “	24d.	40
BLUE AND WHITE CIRCULAR TICKS, Union				
BLEACHED WHITE PLAIN UNION TICK for Down Pillows.				
“ “ “ “	U7766	58 “	30d.	80
“ “ “ “	U7729	63 “	42d.	60
“ “ “ “	U7755	63 “	40d.	60
BLEACHED WHITE SATIN DRILL for PILLOWS				
“ “ “ “	V836	32 “	15d.	66
“ “ “ “	V837	31 “	20d.	66
“ “ “ “	V879	41 “	16d.	66
WHITE SWANSDOWN, for Pillows				
“ “ “ “	V826	32 “	24d.	70
“ “ “ “	V732	32 “	30d.	70
WHITE PILLOW FUSTIAN				
“ “ “ “	V850	32 “	30d.	55
“ “ “ “	V755	32 “	34d.	55
“ “ “ “	V734	32 “	38d.	55
CAMBRICS, for Down Cushions, etc., Unwaxed				
“ “ “ “	V827	50 “	12d.	60
“ “ “ “	V839	50 “	13d.	60
“ “ “ “	V798	50 “	15d.	96
“ “ “ “	V873	50 “	16d.	60
“ “ “ “	White	50 “	16d.	60

The Prices quoted are subject to the Fluctuations of the Market.

— 45 —

1935
ILLUSTRATED CATALOGUE
AND PRICE LIST
OF
UPHOLSTERY TRIMMINGS,
SMALLWARES, &c.



LONDON WAREHOUSE :

DALTON, BARTON & Co., LTD.

MANUFACTURERS,

49, 50, 51, 52, Jewin Street,
LONDON, E.C.1.

Works : St. Nicholas Mill, Coventry.

ALL PRICES SUBJECT TO THE FLUCTUATIONS OF
THE MARKET WITHOUT NOTICE.

Telegraphic Address.
"Coteline, Barb, London."

Telephone Number :
National 6922.