

UFU Policy Structure



25 UFU Groups

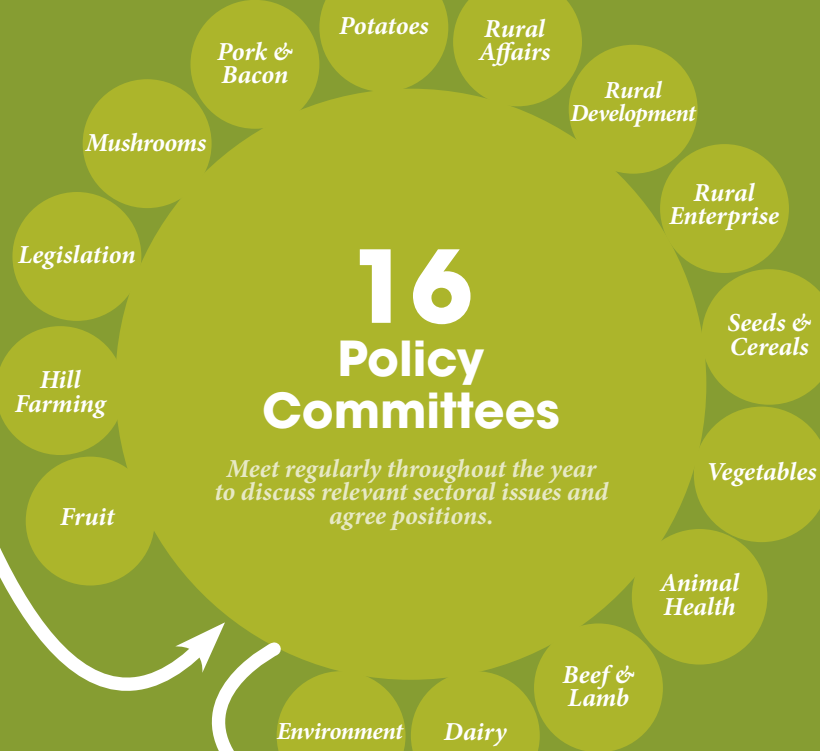
Each group elects local reps for policy committees

Local policy reps, office bearer's, group chair and vice chair contactable throughout the year

Only members of the UFU can attend local group meetings

Group meetings run Oct-March

Meetings are an opportunity to raise issues with local policy reps



16 Policy Committees

Meet regularly throughout the year to discuss relevant sectoral issues and agree positions.

6 County Committees

Nominates candidates for UFU's presidential team.

Propose resolutions to the Executive Committee

Members appointed to the Council from each group within the county

Policy Committee representatives from within the county

Further opportunity to raise and discuss relevant agri-issues

Chair and vice chair of each group within the county

All past Presidents from within the County

Representative from the YFCU

Executive Council

Governing body. Elects presidential team and approves constitutional rule changes.

Made up of all of the members of the six county committees, plus any additional members of the UFU Executive or Board not already a member of a county committee.

Executive Committee

Overarching UFU policy positions agreed at the Executive Committee.

Co-options voted on by the Executive

Chairs and vices chairs of the policy committees, county committees, and local groups

Past Presidents

Members appointed by local groups

UFU Board members

Representatives from the YFCU

Office Bearers