



INNATE IMMUNITY

Pattern Recognition Receptors (PRR)

Part of AbD Serotec
Innate Immunity Range

Research Areas

- Apoptosis & Cell Viability
- Complement
- Cytokines & Chemokines
- **Pattern Recognition Receptors**
- Toll-like Receptors

Cell Types

- Dendritic Cells
- Macrophages
- NK Cells & Receptors

Application specific antibodies and reagents for immunological research

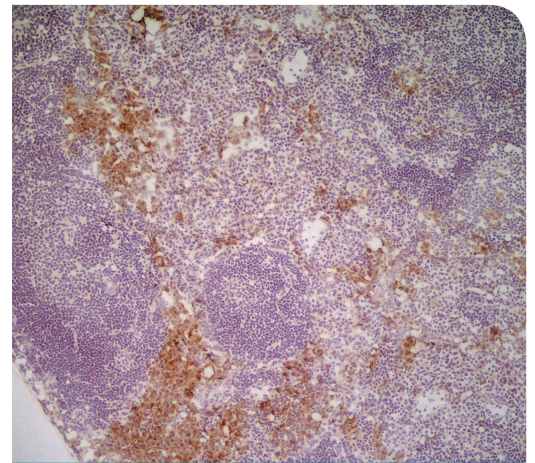
AbD Serotec offers a large range of antibodies to the main types of PRRs:

- Toll-like receptors (TLR) – broad range of antibodies to mouse and human TLRs including those involved in the TLR signaling cascade and TLRs expressed on adaptive immune cells
- C-type lectin receptors (CLR) – antibodies available to both group I and II CLRs including CD206 (the mannose receptor) and CD209 (DC-SIGN)
- RIG-I-like receptors (RLR) – including antibodies to RIG1 and LGPR along with associated signaling proteins such as MAVS (VISA)
- NOD-like receptors (NLR) – antibodies to ligands and signaling proteins including NOD2 and NALP3
- Antibodies are available against key signaling and effector molecules, with a species focus on human and mouse

Featured Product:

C-type lectin receptor antibody CD206 (MCA2235)

CD206 is the mannose receptor and a member of the c-type lectin family of receptors. The mannose receptor is expressed on a number of cells including macrophages and dendritic cells where it detects a variety of pathogenic organisms triggering an immune response. Rat anti-mouse CD206 antibody (MCA2235), clone MR5D3, is recommended for the detection of these receptors. MCA2235 is available in a wide range of formats.



Anti-mouse CD206 (MCA2235) Immunoperoxidase staining

Mouse lymph node cryosection stained with rat anti-mouse CD206 antibody, clone MR5D3 (MCA2235) followed by horseradish peroxidase conjugated goat anti-rat IgG antibody (STAR72). Sections were counterstained with haematoxylin.

Citations: 21

Applications:

Immunohistochemistry - frozen, Flow Cytometry and Immunofluorescence

Related Products:

Rat IgG2a isotype control (MCA1212), mouse anti-human CD206 antibodies; MCA2155 (clone 15-2), MCA2519 (clone 7-450) and MCA5552 (clone 5C11)

AbD Serotec offers a broad range of products for studying PRR's. A selection of products is shown in the tables below, for a full product listing go to abdserotec.com/prr

Anti-Human

Specificity	Clone	Applications	Formats	Product Code**
CD180	MHR73	FC*, IHC-F, IP	Pur, FITC	MCA2150T
CD205	MG38	FC*, IHC-F, IP	Pur, FITC, LE, RPE	MCA2258
CD205	HD30	FC, IHC-F, WB	Pur, LE, RPE	MCA4755
CD206	15-2	FC, IF/ICC, IHC-F, WB*	Pur	MCA2155
CD206	7-450	IHC-F	Pur	MCA2519
CD209	MR-1	FC, FN, IF/ICC	Pur, A488, A647, Biot, FITC, LE, RPE	MCA2318
CD281 (TLR1)	GD2.F4	FC	Pur	MCA2153
CD282 (TLR2)	TLR2.3	FC, IHC-F	Pur, A647, FITC, RPE	MCA2152
CD282	11G7	FC, FN, IP	Pur, A488, A647, Biot, FITC, LE, RPE	MCA2484
CD282	TLR2.1	FC, FN*, IHC-F, IP	Pur	MCA2151
CD283 (TLR3)	TLR3.7	FC*, IP	Pur	MCA2267
CD284 (TLR4)	HTA125	FC, FN, IP, WB	Pur, A488, A647, Biot, LE, FITC, RPE	MCA2061
CD285 (TLR5)	Polyclonal	IHC-P*, WB	Pur	AHP1020G
CD288 (TLR8)	Polyclonal	WB	Pur	AHP868
CD289 (TLR9)	5G5	FC*, IHC-F, IHC-P, WB	Pur	MCA2265
DAI	Polyclonal	E, IHC-P*, WB*	Pur	AHP1780
Dectin-1	BD6	FC	Pur, A488, A647, FITC, RPE	MCA4662
Dectin-1	GE2	FC, FN	Pur, A488, A647, FITC, LE, RPE	MCA4661
LGP2	Polyclonal	WB	Pur	AHP1777
LOX-1	Polyclonal	FC, IHC-F, IP, WB	Pur	AHP952
LOX-1	Polyclonal	E, IF/ICC*	Serum	AHP1601
LOX-1	Polyclonal	E, IF/ICC	Serum	AHP1602
LOX-1	LOX19-22	E, WB	Pur	MCA2765
LOX-1	LOX20-7	E, WB	Pur	MCA2766
MD-2	Polyclonal	IHC-P*, WB	Pur	AHP1717
Mucin 2	996/1	FC*, IHC-F, IHC-P, WB	Pur, FITC	MCA1743
NALP3	Polyclonal	E, IHC-P*	Pur	AHP1774
NOD2	Polyclonal	IHC-F, WB	Pur	AHP1015
PTX3	2B10	IF/ICC, WB	Az Fr	MCA4129Z
RIG-I	Polyclonal	IHC-P*, WB	Pur	AHP1776
TLR7	4F4	E, WB	Pur	MCA2702GA
TREM-1	TREM-37	FC, WB	Pur	MCA4697T
TREM-1	TREM-26	FC, WB	Pur, Biot, RPE	MCA4698T

Anti-Mouse

Specificity	Clone	Applications	Formats	Product Code**
CD180	RP/14	FC*, FN*, IP, WB	Pur	MCA2149
CD205	NLDC-145	FC, IHC-F	S/N, A488, A647, FITC	MCA949
CD206	MR5D3	FC*, IF/ICC, IHC-F, IP	Pur, A488, A647, Biot, FITC, LE, RPE	MCA2235
CD282 (TLR2)	6C2	FC, IP	Pur, A488	MCA2266
CD283	11F8	FC, IF/ICC	Pur, FITC	MCA5891
CD289 (TLR9)	Polyclonal	IHC-P, WB	Pur	AAM74
CD301	ER-MP23	FC, FN, IF/ICC, IHC-F	Pur, A488, A647, Biot, LE	MCA2392
Dectin-1	2A11	FC, FN, IHC-F*, IP	Pur, A647, Biot, FITC, LE, RPE	MCA2289
Dectin-2	D2.11E4	FC, IHC-F, IP	Pur, A488, A647, Biot, FITC, LE, RPE	MCA2415
RIG-I	SS1A	WB	Pur	MCA4695T
SIGN-R1	ER-TR9	FC, IHC-F	Pur, A488, A647, Biot, LE	MCA2394
TREM-1	L5-B8.2A12.3A12	FC, FN, IF/ICC, IHC-F, WB	Pur, A488, A647, FITC, LE, RPE	MCA2578
TREM-2	78.18	FC, FN	Pur, FITC, LE, RPE	MCA4772
TLR7	Polyclonal	WB	Pur	AHP867
TLR11	Polyclonal	IHC-F, WB	Pur	AHP1718

*Requires special treatment, refer to product datasheet.

**Refer to the website for each format specific product code.

Abbreviations: Axxx= Alexa Fluor®, Az Fr = Azide Free, Biot = Biotin, E = ELISA, FC = Flow Cytometry, FN = Functional Assay, IF/ICC = Immunofluorescence/ Immunocytochemistry, IHC-F = Immunohistochemistry - Frozen (Cryostat), IHC-P = Immunohistochemistry - Paraffin, IP = Immunoprecipitation, LE = Low Endotoxin, Pur = Purified, S/N = Supernatant, WB = Western Blotting.