

partnershipupdate

2010 - ISSUE 12

B P L

BANFFSHIRE PARTNERSHIP



inside this issue ...

news from around the area ...

Transport news
... and lots more

FREE COPY

www.banffshirepartners.co.uk

community transport



“keeping the community moving”

community use minibus

dial-a-bus

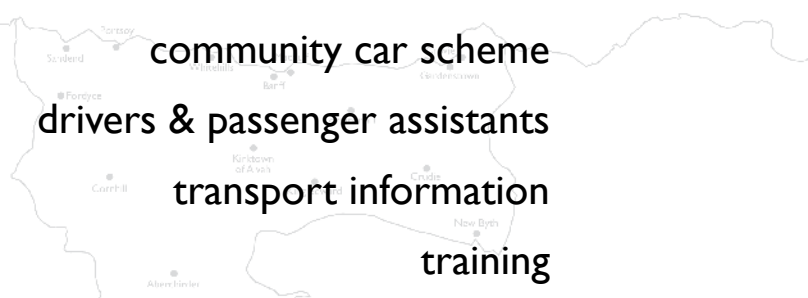
community car scheme

drivers & passenger assistants

transport information

training

... for your transport needs



B P L

**BANFFSHIRE PARTNERSHIP
COMMUNITY TRANSPORT**

The Old School Boyndie Banff AB452JT
T & F: 01261 843598 E: bpl.transport@banffdab.org.uk

partnershipupdate

Design: Kay Beaton,
PURPLEcreativedesign

Printed by
Halcon, Aberdeen
Paper

Printed on environ-
mentally friendly paper.
Woodpulp sourced from
sustainable forests.

Board Of Directors
Directors can be
contacted through the
Partnership
office - 01261 843286.

Directors meet monthly
(or more often if
necessary).

- Ross Balharry, Treasurer
- Sandy Duncan
- Roger Goodyear
- Ian Gray
- Robin Maddock, Chair
- Patricia Seligman
- Iain Taylor, Secretary
- Alex West



Chairman's Letter

Welcome to the latest edition of the Banffshire Partnership Newsletter.



During the year one of the longest serving directors Eddie Bruce had to stand down due to ill-health. Eddie was a very valued member of the board and I would like to record our thanks for his contribution and wise counsel over the years.

Also during the year Evelyn Elphinstone, our administrator and book-keeper retired. Evelyn had worked for the Partnership for many years and I would also like to record our thanks for her hard work and dedication over the years.

This has been a busy and challenging year for BPL. Once again we entered into a formal Service Level Agreement with Aberdeenshire Council which commenced on 1st April and runs to 31st March 2010. This is core funding for the Partnership which allows it to carry out its very important tasks helping many community groups throughout our operational area.

With the expected squeeze on local government finances in the coming years there is no guarantee that such funding will endure at the required level. However, both Aberdeenshire Council and the Local Rural Partnerships across the shire are keen to ensure that they survive any reduced funding from the Scottish Government.

Last year the Scottish Government decided that the Rural Community Transport Initiative budget would in future be handled by the local authority, but it would not be ring-fenced. As this is the major source of funds for our community transport function (75%) we submitted a bid for just over £400,000 over three years and I'm delighted to say that following some negotiation our bid was successful.

A funding bid for £28,000 for three years was also submitted to Lloyds TSB Scotland Foundation. This was to fund a post to develop training, primarily MiDAS (minibus driver) training. We were partly successful in that we got £8,000 for one year.

As we all know Lloyds TSB Scotland Foundation has ceased taking new applications for grants as it currently has no income from Lloyds Banking Group. This will be a major blow to many charities in Scotland.

The Dial-a-Bus service continues to be very well used and the feedback from our clients tells us that this is a lifeline service for many them.

Finally I would like to say a very big thank you to all the staff and volunteer drivers and passenger assistants, without whose time and energy we would not be able to undertake the work that we do.

Robin Maddock
Robin Maddock, Chairman

Submissions:

Banffshire Partnership
The Old School, Boyndie, Banff, AB45 2JT
T: 01261 843286 F: 01261 843598 E: bpl.contact@tiscali.co.uk

Banffshire Partnership Ltd. is a Company Limited by Guarantee in Scotland.
Reg No. 201922. Registered Office: 1a Cluny Square, Buckie, AB56 1AH.

Recognised as a Charity by the Inland Revenue. No. SC029693.

Banffshire Partnership Ltd. is recognised as a Local Rural Partnership by the Scottish Executive.

A copy of this newsletter is available in large format text if required.

Contents

Chairman's Letter 1
 Meet The Staff 2
 Our Valued Volunteers 2
 A Word From Our DODO! 3
 Banffshire Partnership Area 4
 Banffshire Partnership
 Aims And Values..... 5
focus on . . . Aberchirder..... 6
 Busy Times In Cleanhill Community
 Woodland 6
 Community Association Looking For
 Volunteers 7
focus on . . . Banff & Macduff..... 8 - 12
 Banff and Macduff Community Trust
 Ltd 8
 Banff Castle 9
 Banff Preservation and Heritage
 Society 10
 Banffshire Maritime Heritage 11
 COAST - Festival Of The
 Visual Arts 12
 Banff & District Community Safety
 Group 13
focus on . . . Banffshire Coast 14
 Banffshire Coast Tourism
 Partnership 14
focus on . . . Boyndie 15
 Boyndie Trust Limited 15
focus on . . . Portsoy 16 - 19
 Portsoy Thrift Shop 16
 The Scottish Traditional Boat
 Festival 17
 The Portsoy Salmon Bothy 18
 Portsoy 75 Club Will Celebrate 35
 Years In 2010 19
focus on Whitehills..... 20
 Whitehills & District Community
 Council 20
Stop Press . . . Stop Press..... 21
focus on . . . Making It Real 22
 Community Action Plans..... 22
focus on . . . Developing Communities... 23
focus on . . . Community Planning..... 24
focus on . . . LEADER Aberdeenshire 25
focus on . . . Community Transport 26 - 27
 A Transport Service For The
 Community..... 26 - 27
focus on . . . Community Contacts 28
 Useful Community Contact
 Numbers 28

Meet The Staff . . .

Developing Communities - 01261 843286



Duncan Leece
 Director of
 Development and
 Operations



Roger Smart



Kay Beaton

Community Transport - 01261 843598



Jan Maddock
 Transport Manager



Pete Danks



Derek Anthony



Bev Pirie



Michelle Reynard



Glenys Danks



Wendy Smith



Heike Wilson



Roy Makepeace



Denis Askham



Neil Rae

Our Valued Volunteers

Many of our passenger assistants and drivers - whether for the Dial-A-Bus or community groups - are volunteers, whose contribution is greatly valued by all who benefit. If you would like to join them, it's necessary to register with us and take up appropriate training. If you think you can help please contact us:
Banffshire Partnership Community Transport
The Old School, Boyndie, Banff. AB45 2JT
Tel: 01261 843598
E-mail: bpl.transport@banffdb.org.uk

A Word From Our DODO!

As has become the established pattern for Banffshire Partnership's annual publication, we are delighted to offer the majority of space in this book to local groups and projects.

It is a shop window for the impressive amount of community-led work that takes place in our area. Our feeling is that this effort seems to be ever increasing, and certainly the request for BPL to be involved with projects has grown again.

Many of you will know that, it is our dual role to:

- Advise and mentor local community groups in fulfilling their projects.
- Provide rural transport services for local groups and individuals.

At our AGM in November 2009, we mentioned a theme for the coming year, which links to both our main areas of work. Specifically,

we feel there is great scope for community groups to improve communication with one another. This may well lead to opportunities for cooperation, and in some instances, formal joint-working, as compatible aims become evident.

Avoiding duplication of effort is an obvious benefit, of course. Our view is, however, that with the size of projects and ambitious goals some of our local groups now have, particularly those engaged in economic development projects; joining of resources on specific tasks will make delivery so much easier and success more likely.

I hope this book will be a small step to building those vital communication links, and that you will enjoy reading about what is happening here in our community.

The Yearbook gives me a welcome chance to express publicly my sincere thanks to

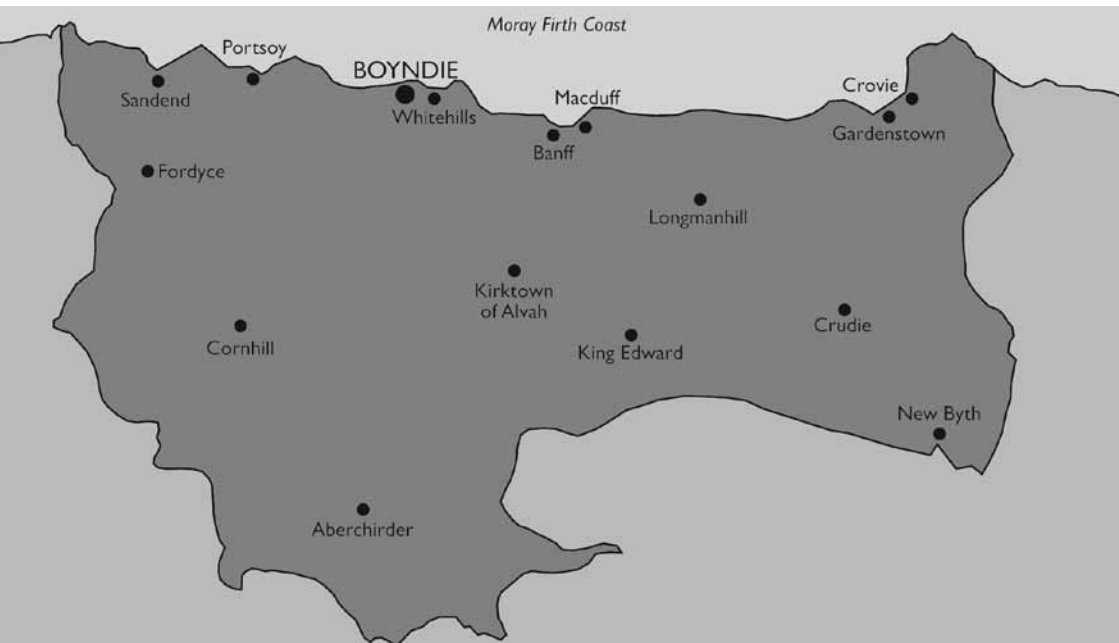
all involved with BPL. I have a team of paid staff who are not only a pleasure to work with, but continually impress me with their good humour and dedication to achievement. Similarly, our volunteers, who do such a wide variety of jobs, ranging from serving on BPL's Board as Directors, to helping elderly passengers on our buses manage their shopping.

I am sure that once again 2010 is going to be a very active year for us all and there is no doubt in my mind that BPL will remain at the centre of some very interesting community-led projects.

Duncan D Leece
 Director of Development &
 Operations (DODO)

Editorial in this newsletter may not be reproduced in whole or part without prior written permission of the Banffshire Partnership. Articles published do not necessarily reflect the opinions of the Partnership.

Banffshire Partnership Area



The Banffshire Partnership area covers the Community Council areas of:

- Aberchirder & Marnoch
- Alvah & Forglen
- Banff & Macduff
- Cornhill & Ordiquhill
- Fordyce & Sandend
- King Edward & Gamrie
- Portsoy
- Whitehills

The following pages highlight some of the activities and events,

which have been happening throughout the area over the past eight months, as well as giving an insight into some of the events which will be taking place next year.

It is our intention to publish an annual Partnership Update. The next edition of the newsletter - Issue 12 - will appear late 2009/early 2010, so don't miss out on a great opportunity to get some free publicity

for your group's activities or forthcoming events. Please send any articles, photographs, adverts or announcements, which you would like to be included to us - we look forward to hearing from you!

**Banffshire Partnership,
The Old School, Boyndie,
Banff, AB45 2JT
T: 01261 843286
F: 01261 843598
E: bpl.contact
@tiscali.co.uk**

Banffshire Partnership Aims And Values

Our purpose:

Within our area (Aberchirder & Marnoch, Banff & Macduff, Alvah & Forglen, Whitehills, Portsoy, Cornhill & Ordiquhill, King Edward & Gamrie, Fordyce & Sandend), to contribute to the economic, social and environmental well-being of local communities by;

- valuing the work of volunteers
- creating opportunities for employment based on the sustainable use of local culture, skills and resources,
- enabling and encouraging lifelong learning amongst local people.

We also aim to encourage and support partnership working between community groups and private, public and voluntary organisations.

VALUES: We try to:

- encourage participation and consensus
- be open and transparent in our dealings
- maximise resources - human, physical and financial
- remain people focused

OBJECTIVES:

To encourage and support communities to run and participate in activity that will help them develop.

Provide rural transport solutions to individuals and communities, where mainstream public transport is inaccessible.

Specific encouragement will be given to projects that have an economic benefit and/or develop partnership working with other groups and public agencies, such as the Local Authority.

The Partnership has a particular interest in tourism initiatives and ideas to promote the use of local products and local suppliers.

It is Banffshire Partnership's observation and belief that the more local people participate in, and take ownership of, activities within their communities, the better that place will become to live in.

Practical ways in which Banffshire Partnership supports projects include:

- Project management advice, and capacity building of groups as a whole, and individual members.
- Assistance with funding applications, or development of financial management packages.
- Putting groups in contact with others who have done similar projects, and helping the sharing of knowledge.
- Reducing rural isolation, and social exclusion, through transport initiatives and opportunities for individuals to access community activity.
- Facilitating two-way communication between local communities, and public agencies, or policy makers at regional and national level.



Photo: Bob Peden

Busy Times In Cleanhill Community Woodland

People visiting Aberchirder's community woodland at Cleanhill have noticed a big change as a result of the felling of its 1.7 hectare larch plantation last April. Now plans are in hand to replant the area as agreed in the felling licence issued by the Forestry Commission.

The larch were planted for commercial purposes around 60 years ago. The decision was made to clear it after a gale in October 2006 blew down a large number of the trees,

blocking paths and creating a safety hazard. Short term work secured the pathways and woods, but experts advised that the whole plantation had reached an age and condition where it should be harvested. Having obtained the Forestry Commission felling licence the Community Association's Cleanhill Tree



Warden, Jonny Barton, spent much time in discussion with potential buyers before securing a contract with Euroforest to cut and remove the timber. He said: "We are very grateful for the advice and cooperation we received from Aberdeenshire Landscape Services, Environmental Health and Transport & Infrastructure, which made the exercise possible."

An automated harvester machine felled the whole plantation – apart from a small corner which is being retained as specimen trees – in four days in mid-May, and stacking and removal were completed by mid summer.

The Association's Tree Warden Jonny Barton continued: "Planting of the felled area is due to begin in the first week of December 2009. We will use a healthy variety of oak, ash, rowan,

Scots pine, wych elm, birch, wild cherry, hazel, alder and other trees grown only from Aberdeenshire seeds, with the cost being met from the proceeds of the sale of the larch. We have approached the Scottish Wildlife Trust to organise the planting and we hope to involve members of the community in some way, as it is their woodland."

Meanwhile volunteers continue to help with ongoing maintenance in partnership with Aberdeenshire Council and the Scottish Wildlife Trust. Jonny responded recently to concerns raised about the amount of thinning activity going on in the woodland.

He said: "The work includes the thinning and removal of small beech trees, large beech branches, dangerous over-hanging branches and fallen wood blocking foot-paths. This work is



Main Path: Before and After.

time-consuming but very valuable for keeping the woodland safe for walkers, rich in variety of wildlife and enjoyable for all the folk who spend time here. Two volunteers, George Harris and Brian Geddes, are helping me get through this huge long-term work so they will often be seen in the woods cutting and removing wood."

He added: "Anyone with the time and energy to volunteer for some of the ongoing planting or cutting works, or who sees something they think



Narrow Path: Before and After.

shouldn't be going on, can call me on my mobile number 07908 598449 or Aberdeenshire Council Landscape Services on 01261 813390."

Community Association Looking For Volunteers

Aberchirder's Community Association has made an appeal for people to put themselves forward to join its committee so that it can continue to work effectively for the benefit of the community.

Chairman Bob Peden explained: "Since it was formed in 1996 the Association has carried out a lot of projects to improve local amenities and the environment, both on its own and in partnership with Aberdeenshire Council. The main work these days involves running the Community Pavilion and its Gym, helping to look after Cleanhill Wood, holding the annual Gala with St Marnans Sports Club, and providing lights for the festive illuminations. Recently the committee has become a bit short handed and we would welcome new blood to take on some of the load, either by attending committee meetings or by helping out with some of the activities."

Anyone with skills, ideas and enthusiasm to offer should contact Secretary Linda Farquhar on 01466 780512 or by email at linda@lfarquhar7.orangehome.co.uk.



focus on . . . Banff & Macduff

Photo: Stanley Bruce

Banff And Macduff Community Trust Ltd

There is a sincere feeling that communities can be improved through the active involvement of their residents. Developing this capacity is an important feature of Banff and Macduff Community Trust Ltd (BMCT) who will actively encourage people to join and suggest projects.

The Trust was established in January 2009 and officially launched on May 24th during the Coast Festival. BMCT is a membership organisation formed by the community for the benefit of the community following development trust principles, aiming to address the economic, social and environmental needs of our community. Put simply, we work with, in and for the community.

The Trust will do this by supporting and collaborating with the many existing businesses, groups and organisations as well as Aberdeenshire Council and through the involvement of the local community by

encouraging open, two way dialogue.

In spring 2009 BMCT instigated a participatory photographic survey of what was most liked and disliked about the towns. 64% of over 300 photos returned showed that, by far, the most prevalent dislike was run-down boarded up properties and unsightly public places.

Either we can sit tight and let our towns remain blighted by these eyesores hoping a commercial use reappears or we can do something about it, re-animate these spaces and regenerate the hope and ambition of those who have a stake in them.

The Trust is undertaking a mapping project to identify where these places are so that the problem may be tackled in collaboration with relevant partners. The aim, in the short term, is to brighten up the identified places in order to reduce the negative impact on the towns, which is vital for community and

business confidence.

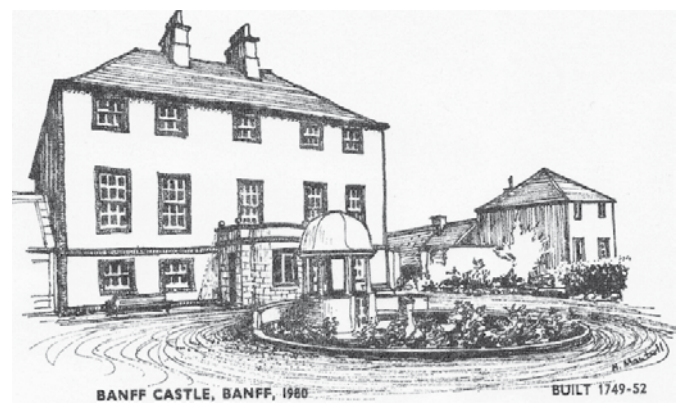
In the longer term, BMCT hope to transform these spaces with temporary projects that allow individuals and community groups to experiment with new ideas and enterprises and regenerate the physical space itself so new businesses can be attracted. By giving the community the opportunity to become involved in the transformation/development, we stand a good chance of creating something of lasting benefit.

The more people who join and participate, the more we can achieve for the towns in the way you want. Every third meeting is open to the public and to join or for further information please contact:

Fiona Poustie, Operations & Development Manager
BMCT, Banff Castle, Castle Street, Banff. AB45 1DE
T: 01261 815185
E: banffandmacduffct@btconnect.com

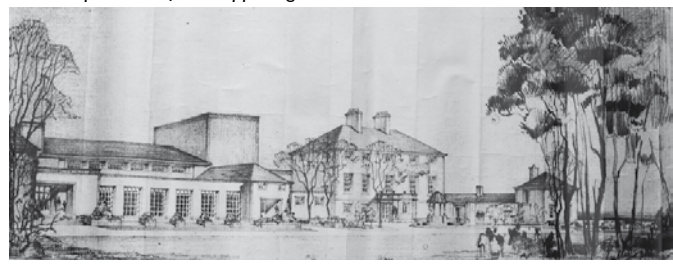
Banff Castle

For almost 60 years Banff Castle, situated in the centre of the county town of Banff, has been something of an enigma. Its prominence and familiarity appears to have rendered it invisible to the community who not only live and work around it, but own it.



The buildings and grounds which consist of Banff Castle were bought from the Thomas Barton estate in the late 1940's and handed over to Banff Castle Community Association to run. Post-war Banff had aspirations of becoming the cultural centre of the north east and the castle was bought by public subscription with a view to realising these aspirations. Plans have recently come to light which outlined the proposal for a 600 seat theatre complete with stage, changing rooms, arts and craft rooms and a 200 seat restaurant.

This was prevented from happening



Today the castle is home to a variety of community groups as diverse as art club to pipe band to yoga, all of which meet regularly. It is also host to Arts Festivals, Exhibitions, Film Screenings and has recently acquired a licence to hold civil marriages. In the run up to our Diamond Jubilee in 2011 the Castle Association will be celebrating this diversity through events which embrace our past and our future.

Obviously the 17th Century mansion house, which occupies the site, designed and built by John Adam for the Seafield family, is not a

castle. This refers to the historic site itself on which the 11th century curtain walls of one of Scotland's oldest stone castles still stands.

In the 1990's, Banff Castle was renovated and restored to emphasise its Georgian grandeur. Today the castle is a fabulous, classic venue for every event.

For further information contact T: 07728 405539 or E: banffcastle@yahoo.co.uk





Photo: Stanley Bruce

Banff Preservation & Heritage Society

People come back for more! So the Banff Preservation & Heritage Society for the second time walked the historic marches of Banff, and twice as many people came as last year. It was the first outing for our own Society flag. The bookshops sold out of our handsome hardback *Book of Banff*, so they are now selling the reprint. We conducted more guided tours of Banff this summer than ever before. The properties we manned on Doors Open Day had more visitors than ever before.

In the fine weather we have been mapping and photographing the individual gravestones of the old parish kirkyard. There is such a sense of achievement when from one or two mossed letters you can begin to recognise an inscription in Cramond's 100-year-old catalogue. There was even more a sense of achievement when we actually found and deciphered (almost completely) a seventeenth century stone that Cramond had missed.

Our illustration this time is from a historic tomb on the

wall of the Fife Mausoleum in the grounds of Duff House. Thereby hangs a tale. The second Earl came from decent landed gentry, but he wanted evidence of a distinguished pedigree. So he toured the kirkyards of the district and stole stones that looked like the tombs of knights of old, and added them to his family mausoleum, as fake ancestors. He put a slab of stone in front of the old inscription at the back of the knight. But our picture shows how in the twentieth century the stone slipped, and we can see some of the original lettering behind. Evidence of crime!

If you are interested in finding out more about Banff's history, join the Preservation & Heritage Society. We now have (this year's achievement) our own website at www.banffpreservationandheritagesociety.org.uk



Banffshire Maritime Heritage

2009 has been an exceptional year for the Banffshire Maritime & Heritage Association. The Association has gone from strength to strength; in May we were officially recognised as a charity, and were given our registered charity number SCO40505.

We have published another four books, these being:

- a) the second volume of our *Along the Coast* series, which stretches from Pennan to St Fergus, ISBN 0-9547960-9-9, £5.00.
 - b) *Back to the Sea* – An introduction to Peter Anson and his life on the east coast of Scotland, ISBN 978-1-907234-00-2, £6.00.
 - c) Our wonderful 2009 poetry anthology *Coming Home – A Burns and Homecoming Celebration*, ISBN 978-1-907234-01-9, £5.00,
- and last but not least;
- d) *Hall Russell Remembered - 1864 to 1992*, ISBN 978-1-907234-02-6 (2nd edition).

Our growing library of ten books published to date are currently bringing in revenue for the association and will

do so for a long time, as well as promoting the north east corner of Scotland.



Peter Anson sculpture

This year we have also built our sculpture dedicated to Peter Anson. In June we held a public consultation, which decided, subject to planning permission from Aberdeenshire Council that its location should be Crook o' Ness Street in the recently formed Maritime Garden, Macduff. Appropriately just a stone's throw from where Peter Anson lived on the Low Shore.

In addition, this year we launched our own website www.banffshiremaritime.org.uk, which is now taking shape. On our website, you can view or download our annual newsletter

'Nautical News'. On our links page you will find a link to www.webhistorian.co.uk Prior to the launch of our own site, we were given free space on this site, and we still have thousands of pictures, fishing boats, castles, etc., alongside lots of information regarding the north east of Scotland.

If you're interested in what we're doing why not come along on the first Monday of the month to Macduff Town Hall at 7.00pm. We'd be very happy to see you.

We can now be contacted via banffshiremaritime@yahoo.co.uk





focus on... Banff & Macduff

Photo: KnockNews Pictures



focus on... Banff & District

Photo: Stanley Bruce

COAST - Festival Of The Visual Arts

To be held in the beautiful Banffshire coast towns of Banff and Macduff on 28th May to 30th May 2010

If you are looking for something to do with the family over the May bank holiday why not come to the COAST Festival of the Visual Arts.

2010 promises to be another wonderful festival with opportunities for people of all ages to take part in arts events and activities and to view art in the most beautiful of settings.

The weekend will be filled with over 30 events.



Stanley Bruce

There will be exhibitions from a host of Scottish and local artists, with a chance to buy your own art work at the art fair.

Come and see the exciting new commission 'Living Spaces', a temporary public work by two artists, on view over the weekend.

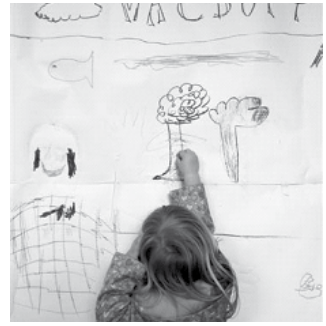
There will be lots of creative workshops to take part in, for both adults and children. And if that is not enough there will also be film shows, music, community activities, a food mall and a children's art trail.



KnockNews Pictures

Come and enjoy yourself. 2010 promises to be another fantastic weekend for all the family.

For information visit our website www.coastfestival.org.uk or phone 01261 833819



Banff & District Community Safety Group

The Community Safety Group (CSG) is a forum for the public to raise issues of public safety with the agencies responsible.

The CSG is overseen by the Community Safety Partnership and is run by volunteers. It brings local citizens together with the Police, Fire and Rescue and other social services, as well as voluntary organisations.

The CSG recognises that public safety and wellbeing are a collective responsibility and cannot necessarily be ensured by one agency alone and without citizens' support and involvement.

The Group's priority themes are:

- Addressing antisocial behaviour such as drunkenness, disorder, antisocial driving, etc.
- Reducing community safety problems arising from substance/alcohol misuse.
- Reducing vandalism.
- Increasing road safety, in particular for the 17-25 year age group.

Funding is available to support local groups and organisations to tackle both underlying causes and immediate problems. Projects supported include Brighter Horizons, Board 2Xtremes; Pass Plus driving instruction (with £100 contribution to each candidate completing the



course) and high visibility vests for primary schools.

The CGS meets six-weekly, alternatively in Banff Castle and Macduff Arts Centre. All are welcome to attend the meetings and raise issues of concern. Contact can be made through the community safety website: www.aberdeenshirecommunitysafety.org.uk and click on 'individual CSG pages'.

Macduff Primary School children with their hi-visibility vests.



Banffshire Coast Tourism Partnership

2010 will see a major step-change in the activities of the Partnership in promoting tourism along the Banffshire Coast - from Pennan to Cullen. The awarding of £200,000 funding over a 3-year period from Scottish Enterprise, LEADER and Aberdeenshire Council will enable the delivery of a newly-developed action plan aimed at developing the Banffshire Coast as an attractive, high quality destination - delivering immediate, medium and long term benefits to the area. Our essential aim is to make every visit to the area truly memorable and deliver real increases in tourism and visitor spend.

Against the current backdrop of financial pressures, it is extremely gratifying that these organisations have not only recognised the importance of tourism to the Banffshire Coast, but also that the Partnership is the vehicle

by which this ambitious plan can be delivered - and this is testimony to the work of all those involved in the Partnership since its inception three years ago.

The Plan (Making Effective Tourism the Reality 2009-2012) has six key themes: the visitor experience and customer service; business collaboration and cross-promotion; development of new products; effective promotion and communications; provision of support to members (including a series of workshops and seminars on diverse topics); efficient operations and evaluation. The funding has allowed for the employment of a Tourism Development Manager and Project Support Officer who will be key in the development and delivery of our activities.



Over the year past, the Partnership has maintained its core activities. The now annual Photographic Competition continues to draw many entrants from far and wide, with the extra bonus of the very popular exhibition of entries in the Duff House Tearoom last year and at Macduff Marine Aquarium in 2010. The leaflet stands throughout the area help to promote local attractions and activities. Our website (www.banffshirecoast.com) will be re-developed early in 2010 to reflect the integral part the internet now plays in holiday planning. In addition, a new Information Guide will contain all the information a visitor needs once they are here.

If you would like to find out more about the Banffshire Coast Tourism Partnership or get involved in any of our activities, please contact the Partnership on 01261 815641 or e-mail info@banffshirecoast.com

Boyndie Trust Limited

It is hard to think of a new way to start a report about Boyndie Trust's year, so I will say what I always do; it has been very busy indeed. Any of you who come to our Visitor Centre will know that, possibly just by having done battle for a space in the car park!

This is a great opportunity to thank everyone who works at Boyndie, whether as a paid staff member, or a volunteer. The whole team has worked hard, and done so with the characteristic good spirit and friendliness that is so often remarked upon by our customers and other visitors. So thanks to the Garden Team, Woodwork, Aabiddee Prints, Catering, and of course, my admin. staff and the Trust's directors.

Operationally, we fully expect to continue our vital working partnership with Aberdeenshire Council during 2010, and are always keen to stress how central

that is to Boyndie's success. We developed smaller-scale, but valued, relationships with other groups in 2009, and welcome the chance to build on them.

Perhaps the single biggest physical change at Boyndie in 2009 was our new kitchen. The extra space allowed not just better working conditions, but better and more efficient methods too. We are fully implementing 'Cooksafe' as our working practice, and commend it to other catering businesses. We will happily show any interested parties how it works.

In 2010 we have set goals in various areas. Our core purpose as a charity is to help unemployed adults develop their skills and personalities. We are keen to see if there are any additional services we can provide, maybe training courses for example, that will help that aim.

We had a big drive in 2009 to update and expand the range of merchandise in our gift shop. It generates a healthy chunk of our annual income. I suppose the single biggest success was our range of silk flowers, which sell in staggering numbers, and we are told by our customers our selection is the best they have seen. We could grow it further if only we had the space.

And we haven't forgotten that dreaded carpark. We have expanded the spaces available three times since the building opened, but it is still insufficient. It is a conundrum, as we don't want to lose more community garden area, but something has to be done.

I guess almost all our problems at Boyndie are those associated with squeezing an ever-expanding organisation into a fixed space... it is a nice problem to have.



Photo: Kathy Mansfield

Portsoy Thrift Shop

Another year goes past and thanks to the ongoing generosity of both donors and customers, the Portsoy Thrift Shop goes from strength to strength.

had to stop taking in either television sets or videos. That apart we really do offer something for everyone and it's always worth taking a few minutes to pop in and see what's new thanks to

are always open to requests for support for projects or activities that will benefit Portsoy and the surrounding area. Wherever possible we are delighted to work jointly with Portsoy 75 Club and will be supporting the great display they achieve each year with the Christmas lights.

Sadly last year we lost Sybil Bowie, one of the original members of our team. She is greatly missed and warmly remembered for her unstinting support for the Shop.

Open every Monday, Tuesday, Thursday and Friday, from 10.00 am to 12.00 noon and from 2.00 to 4.00 pm (also contactable at the same times on 07870 536776), please call by and be assured of the warmest of welcomes from the Thrift Shop ladies!



The Scottish Traditional Boat Festival

Blessed with perfect weather and honoured by visits by Her Royal Highness The Princess Royal and First Minister, Alex Salmond, the 16th Scottish Traditional Boat Festival enjoyed its participation in Scotland's national Year of Homecoming celebrations.



With its great gathering of traditional vessels, craft demonstrators, music, song and dance, fine food and a host of activities to take part in, the festival is now increasingly recognised as a unique celebration of the maritime and rural cultural heritage of the the North East. Extended to four days, well over 20,000 visitors came to Portsoy and enjoyed the sights and sounds all around the harbour and town.

Special features in 2009 included an international symposium on traditional boat building and restoration with speakers from the US, Sweden, England and Scotland. Craft demonstrators also included

participants from Norway and the US. Indeed the craft content of this year's Festival, including the major contribution with knitting and weaving by the Moray Firth Partnership, proved hugely popular.

In addition to the fine display of small craft, the harbour was graced with the historic vessels Reaper, Swan and Isabella Fortuna and an excellent range of food and drink was available for visitors to enjoy as they listened to the non-stop programme of live music.

An important element of the Festival's strategy is to develop youth activities and all of these were on show including the boat building "Faering Project", the Ballads and Bairns singing and instrumental music initiative and the visual art activity, the latter providing the super

backdrop to the harbour side stage.

The 2010 Festival on June 26th and 27th, is setting its sights on helping bring the great traditional skills of the past into the future for folk of all ages, the young in particular. With special emphasis on boat building, restoration and sailing, but including associated crafts, music and art, the programme will include a feast of opportunities for all to see, take part in and enjoy.

As ever the Festival would not happen without the support of so many national, regional and local organisations and authorities, but perhaps most of all, thanks go to the people of Portsoy whose hard work (and tolerance) make the event the great success that it is.



Members of the team present recent donations.

The goods on offer include high quality ladies and gents clothing, an excellent range of children's clothing, toys (including a super collection of jigsaws), a wide range of bric a brac, household goods and books. From time to time we are able to offer some smaller items of furniture, but we have

the very high turnover of stock that we enjoy.

Of course all the profit that we make goes to good causes, all directly or indirectly of local benefit. We are hugely proud of the fact that that we have now made donations totalling well over £70,000 and we



The Portsoy Salmon Bothy

Less than two years since the restoration work was started, just over a year since the official opening at the 2008 Boat Festival, under a year since the Public Entertainment licence was gained and just a few months since the doors were opened on a regular basis . . . yet the Salmon Bothy is already remarkably well established on the local scene!

The museum in the three ice chambers on the ground floor features the history of Portsoy harbour, information on the early (and more recent) industry of the town and the story of the salmon fishing industry and Portsoy in particular. Fascinating artefacts continue to arrive including most recently, superb models of a salmon bag net and a fly net kindly loaned by the family of the late Noel Smart of Joseph Johnston & Son Ltd., Montrose. These demonstrate clearly the great skill and hard work that went into fishing for salmon. We're



Visit of Mike Russell, Minister for Culture, External Affairs and Constitution with John Sellar and candidate Banff & Buchan MP Eilidh Whiteford

also very encouraged by the very positive comments in the visitors' book!

Our genealogy facility is quickly becoming an established centre for advice and resources to assist people to explore their roots. Our two PC's fully equipped with software and searchable databases allow people to access one-to-one assistance. Another project underway is the recording of the monumental inscriptions of a section at Portsoy cemetery with the final goal of producing a booklet detailing the inscriptions for use by researchers all over the world.

Upstairs at the Bothy is proving to be a great success with weekly meetings of knitters and artists, the Portsoy Players and the Faering Project amongst others. The introduction of regular talks has proved very popular and it is planned to continue and develop this programme to include as wide a range of subjects and interests as possible. Last but not least is the excellence of the acoustics and the friendly ambiance which has attracted a number of musical events, not least is the hugely popular, monthly "Folk at the Bothy".

In fact, Upstairs at the Bothy is a unique, multi purpose area that is available to hire for all sorts of activities and events at a very reasonable rate. If you would like to know more, or about joining the team of volunteers who act as guides and hosts, please contact Leanne Wilson on 01261 842951 or take a look at www.salmonbothy.co.uk

Portsoy 75 Club Will Celebrate 35 Years In 2010



Founded in 1975 The Portsoy 75 Club was formed to participate in activities for the benefit of the local community; to provide facilities for members to meet informally and to encourage friendship and the exchange of views and ideas among members.

From the early days of dances at the Commercial Hotel, the 75 Club has expanded to provide a wide range of social activities as well as supporting those run by other organisations. In fact a strong social network between community groups has evolved with many organisations helping and supporting each other throughout the year.

Meetings are mostly held at the Station Hotel which supports the 75 Club by allowing use of its facilities for fund raising events. The 75 Club are best known for the Tattie Shed Dances; Gala; Choir and organising the Christmas Lights for the town, but there is plenty of work done behind the scenes helping those in need.

Many other organisations and individuals send

get any younger to the point that many people believe that 75 refers to the average age, so the Club feel it is time for a recruitment drive.

2010 will be the 35th year of the club and one of the founder members, Ronnie Runcie, is still a very active member. The Club has over 50 members and most of them actively participate in club events, but we still need new members from the Portsoy area.

Anyone over 18 wishing to support their local community, and have a lot of fun doing so, are welcome to contact 75 Club Chairman Brian Sutherland on 01261 843070 or Secretary Paul Scrivin on 01261 843171.

donations to the 75 Club. In particular the Portsoy Thrift Shop regularly help towards the cost of the Christmas lights and New Year Firework Display. It was also equally involved with the cost of providing the new granite welcome signs at each end of the town.

The members also benefit from a variety of social activities and talks by guest speakers which non members are welcome to attend. Inevitably, as with all clubs the members do not



Founder members L to R: R Drummond, J Adams, I Craig, J Stewart, B Milne, A Masson, R Runcie enjoying a celebration along with their tolerant and supportive wives in 1975.



Photo: Stanley Bruce



Whitehills & District Community Council

Once again our local community councillors have had a busy year attending to the various requests from local residents and taking forward numerous exercises to continue to improve our local environment.

New wooden clothes poles were erected on Low Shore to replace the aging and rusted metal ones which had seen better days. Similarly a number of new bench seats created from recycled materials are to be seen all around the village. The old seats at Whitehills Cemetery are also to be replaced by the end of the year as are the old and rusty gates.

The two sets of wooden steps rising up to the Compass Rose east of the harbour have also been totally refurbished for the safety of walkers.

We have unfortunately had a couple of ideas for creating new rural pathways knocked back due to badger activity, but we are working on the

possibility of creating a "Banffshire Way" making use of the old railway lines in the area. The pathway up to the wind turbines from the Boyndie Centre has regrettably been temporarily out of commission due to the erection of turbine number eight, but we hope to have a slightly amended route completed and open by the end of this year for the benefit and enjoyment of the many interested locals and visitors alike.

Various discussions have taken place throughout the year with a view to having something done with Boyne Castle and this is presently in the hands of Historic Scotland.

A hugely successful project was arranged in July this year involving around eighty young people of Whitehills and District. Directed by the drama group "Theatre Modo", a wonderful piece of theatre was created, culminating in a highly colourful and musical

parade through the streets of the village. The weather was dreadful, but was nevertheless supported by a huge following of parents and villagers, and while an expensive exercise it would be worth considering a repeat at a future date.

We have purchased new Festive Lights to brighten up the village through the dark December nights and these will replace the old ones which have served their purpose admirably, but regrettably are now past redemption.

Finally we have been able to provide financial support through the Boyndie Windfarm Community Fund, which we administer, to a number of local causes through the year. The various projects have benefited to the extent of £12,200 and we are open to applications from bodies within our community council area for funding that meets the prescribed criteria.

Project Snippets From Around The Area

The Banffshire Way
Walkers could be making tracks to and from Banff if ambitious plans to transform the disused railway line into a new path becomes a reality. Boyndie resident, Denis Askham, believes it is time the area benefited from investment into a regional walkway. He wants to establish a suitable and sustainable walkway between Banff and Moray. This trail could ultimately link up to the Speyside Way thus creating a haven for outdoor user groups and the local economy. Denis would welcome any feedback. Tel: 01261 861742 or e-mail: dnsaskhm@aol.com

Deveron Music
After the sad loss of the Deveron Festival, some of its organisers still hope to bring great performers to the North East, and to encourage talented youngsters, at school and at muic college.

To find out more contact

the Secretary: alistair.mason@btinternet.com

The Deveron Singers
The Deveron Singers draws its membership from a wide geographical area extending from Fyvie to Huntly and Keith. It is a "community" choir, which now has a membership of over 60. Jane Duffield, the Musical Director is keen to promote the philosophy that singing is for everyone whether an experienced singer or a complete novice.

The choir rehearses on Wednesdays and Saturdays at Macduff Arts Centre. The choir performs concerts in Banff at Christmas and in the spring and is often asked to perform elsewhere. The choir has a website at www.deveronsingers.co.uk The secretary can be contacted on 01261 821282

RAF Banff Association
It has been a successful year again for the Association, with considerable public interest shown for the historical display housed at

Boyndie Visitor Centre, and some new material found, that will be added to this display early in 2010.

The DVD 'RAF Banff Strike Wing' has continued to sell well, and if you have not bought a copy yet, you can obtain one from the Visitor Centre, or various other local retailers. It is priced at £10, and is of the universal format, so it will play on both European and American DVD machines. It makes an ideal gift for ex-Banff relatives abroad!

The Association has agreed to be part of the new *Banff Airfield Trust*, along with a number of other local groups, Aberdeenshire Council and Seafeld Estates, and to look at the long-term possibility to develop an interpretive tourism facility based in one of the former RAF buildings.

Contact for RAF Banff Association: Colin Jeffrey 01261 818417.

Community Action Plans

Banffshire Partnership Limited offers to assist Community Councils, or other such organisations, to formulate a Community Action Plan, from the views, ideas and priorities of local people.

Our methods avoid hostilities or arguments that can arise in traditional public meetings, and allows everyone's view to be heard . . . not just those with the loudest voice.

BPL has secured grant funding under an Aberdeenshire-wide project called 'Making it Real', and this pays for most of the key costs.

You will need to:

- Be prepared to distribute publicity material, and twist a few arms, so that a public meeting is attended by a good number, and cross section of local residents.

- Hire a suitable hall for the evening, and muster some volunteers to serve teas and coffees, and a couple more to assist the BPL staff manage the crowds!

- Be prepared to spend a little time after the event helping BPL word the final report and supply a few photos to illustrate it.

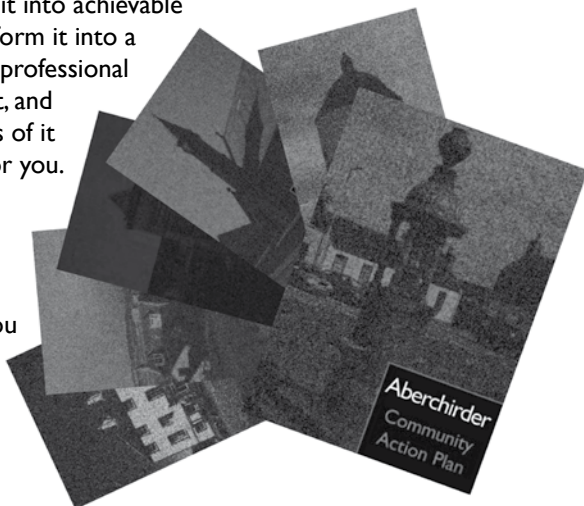
BPL will run the event, collate the ideas and data generated, help you to prioritise it into achievable projects, form it into a clear and professional document, and get copies of it printed for you.

You will find it useful in helping you chose projects to do, that meet the needs

of your community and can demonstrate that they have the backing of local residents.

We recommend that your Community Action Plan be given a life of about three years, as by that time, projects may have been achieved, and priorities or opportunities may have changed. Time to do it again!

For more information, contact BPL on 01261 843286 or e-mail bpl.contact@tiscali.co.uk



Developing Communities

Banffshire Partnership Limited (BPL) is a network of community groups formed in 1999. Although entirely independent, it is supported financially by Aberdeenshire Council, and maintains good relationships and links with various departments of that organisation.

We exist to help community groups, or whole communities, plan and develop projects, large or small. These projects may be things that create jobs, boost the local economy, or perhaps just improve the quality of life for local people and visitors to our area.

Practical examples of what we do include:

- Helping and advising you how to draw up a business or project plan.
- Assisting you to market or publicise your idea.
- Working with you when writing funding bids and filling in forms.
- Putting you in touch with others who have done similar projects before.

- Liaising with local Council Officers, so that they know about your plans, and you know what services they may be able to offer.

What we will not do is take your project over and run it for you. Our help is all aimed at advising, supporting and mentoring, and equipping you with the knowledge and skills to make your own idea work.

Of course, what we hope is that, when you have been successful and completed a project, you will be willing to share that experience with future newcomers. BPL's paid staff and volunteer Directors, have all been involved in community projects, and

made that commitment to hand their knowledge on to others.

More and more, potential funders of your project will look for your organisation or community, to develop partnerships with other relevant groups. They will want proof that your project really does have the support of your community too. BPL is well placed to help in both cases.

Best of all, the help you get from us is nearly always free of charge, thanks to the continued valued support from Aberdeenshire Council. For more information, contact BPL on 01261 843286 or e-mail bpl.contact@tiscali.co.uk



Support for Aberdeenshire Business Scheme

To find out more about whether Aberdeenshire Council can help your business grow contact:
 Christine Webster (Banff and Buchan Area)
 10 Commerce Street, Fraserburgh, AB43 9QA
 T: 01346 519881 E: christine.webster@aberdeenshire.gov.uk
www.aberdeenshire.gov.uk/support/finance/sab.asp

Community Planning In Aberdeenshire

Community Planning (CP) is a way of working, in which major providers of public and voluntary services in an area, work together with their communities to deliver better services. The Aberdeenshire Community Planning Partnership was formed in 1999 and published its first community plan in 2000.

CP became a statutory process in Scotland when the Local Government in Scotland Act 2003 came into force. The Act requires local authorities to lead the community planning process and other major public service agencies to participate in it. The partnership is required to work with its communities in order to improve the quality of life in the area. At present the agencies and organisations signed up as Community Planning Partners across Aberdeenshire are as follows: -

- Aberdeenshire Council

- Aberdeenshire Councils for Voluntary Service Network
- Community Councils
- Grampian Fire & Rescue Service
- Grampian Police
- Local Rural Partnerships
- NHS Grampian
- Scottish Enterprise Grampian

At a more local level, each of the six areas within Aberdeenshire are represented within the CP process by a Local Community Planning Group and a Community Planning Officer.

Partnership working brings many benefits - organisations gain shared understanding of local issues and concerns and they can work together to deliver solutions without wasting money by duplicating each other's efforts or competing against each other. Also, by working in partnership, organisations can pool resources to enable them

to tackle bigger problems and attract external funding. The inclusion of community partners means that the better solutions can be reached and delivered in the way that best suits communities. The partnership also considers the *community* as a partner and the views of the community are fundamental to the process of CP.

The partnership's vision is: ***"Working together for the best quality of life for everyone in Aberdeenshire."***

For further information on Community Planning within the Banff & Buchan area please contact: -

*Fiona Alderson
Community Planning Officer,
Banff & Buchan
St Leonards, Sandyhill Road
Banff AB45
Tel: 01261 813305
E-mail: fiona.alderson@aberdeenshire.gov.uk*

LEADER - Rural Development Fund

LEADER is an innovative programme which aims to improve the quality of life and economic prosperity in Aberdeenshire.

The programme is an integral element within the Scotland Rural Development Programme 2007-2013. It is funded by the Scottish Government and the European Commission, and is delivered by the Rural Aberdeenshire Local Action Group (LAG) to rural areas and communities with populations of less than 5,000.

The two overarching LEADER themes chosen by the Rural Aberdeenshire LAG are 'Revitalising Communities' and 'Progressive Rural Economy'.

Participants in the programme require to identify match funding which may come from a variety of sources, for example, public agencies and private contributions.

Scheme Guidance, Application Forms, Timetable and details of the LAG Partnership are available

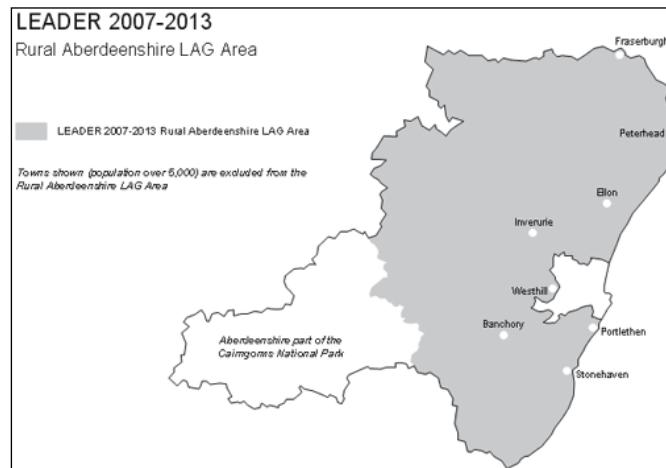
on the LEADER website at www.aberdeenshireleader.org

Interested parties should contact the LEADER Co-ordinator to discuss their proposal before applying for funding:



Vicky Thomson
LEADER Co-ordinator
Aberdeenshire Council
Gordon House
Blackhall Road
INVERURIE
Aberdeenshire
AB51 3WA

Tel: 01467 628383
E-mail: vicky.thomson@aberdeenshire.gov.uk





A Transport Service For The Community

Many people think that our buses are only for older or disabled people. Well, that's just not true! For many people who live in our area getting to and from the shops is a real problem. This is because they live too far from a service bus route, the only family car is used to get to work, or they have no car at their disposal. One of Banffshire Partnership's main aims is to help people who find themselves in these situations. We're not here to duplicate anything already provided by regular bus services, but to "fill the gaps".

We provide a service in our community in many ways:

Dial-a-Bus

BPL's Dial-a-Bus has been around for several years now under various organisational banners. You will see the buses going around the community with the distinctive blue, green and grey livery.

We serve the communities of:

- **Aberchirder**
- **Alvah**
- **Banff**
- **Boyndie**
- **Cornhill**
- **Crudie**
- **Fordyce**
- **Forglen**
- **Gamrie**
- **Gardenstown**
- **Hilton**
- **King Edward**
- **Macduff**
- **New Byth**
- **Ordiquhill**
- **Portsoy**
- **Sandend**
- **Whitehills**

We cater for people who may have difficulty getting on a normal service bus or who have problems carrying their shopping. We provide our clients with door-to-door service, which gives them access to shops and services perhaps not available in their communities. And, just as importantly, a valuable social outing. The driver is accompanied by a trained passenger assistant, who helps passengers in many ways during their journey. *Our fares are based on those for service buses, but we do accept concession cards*



The buses run at least once every week or more often from some areas and must be booked in advance. Please ring the office for more information or to register with us. We will then ask one of our staff to visit you at home. They will explain the service more fully and make sure it suits your needs.

Community Minibuses

We have a fleet of three minibuses. All our buses are fairly new and are available for hire by registered community groups. We have two 13/14 passenger fully-accessible buses fitted with a side-step and tail lift access. Our third bus is a 16 passenger vehicle with a side-step.



We encourage the community groups to have their own drivers as this cuts down the cost of hiring the buses. However, we have a pool of volunteer drivers and paid drivers who we can use.

As members of the Community Transport Association, we provide the



nationally accredited Minibus Driver Awareness Scheme (MiDAS) training to everyone who drives our buses. So you can feel safe when you are out and about.

We charge per mile; please call us to find out the current charge. (Minimum charge of £20 per day applies)

If you would like to register your group or to find out more about driving a minibus, please call us on 01261 843598. We'd be delighted to give you more information.

Volunteers

As well as our regular staff, we have a band of committed and enthusiastic volunteers who drive the minibuses and assist the passengers. They all say that they find the work fun, sociable and rewarding. If you have a sociable disposition and a sense of humour, perhaps you could spare the odd half day to help out. We will give you training and support and you don't have to commit to any more time than you can manage.

Just one or two half days each month would benefit a huge number of people. In this way, we can expand the service on offer. (All out of pocket expenses are reimbursed).

Training

We can provide Minibus Driver Assessment Scheme, Passenger Assistant Training, Minibus Emergency Evacuation Procedures and Car Driver Training Scheme training. These are provided free to all our volunteers and for a charge to persons who are part of a community group or commercial organisation.

If you live in the Banffshire Partnership area and feel that your community could benefit from a Dial-a-Bus service or Community hire, please give us a call. We will be happy to discuss the possibilities more fully with you.

For further information contact:

**Banffshire Partnership -
Community Transport**
Tel: 01261 843598



focus on
Community Contacts

Useful Community Contact Numbers

Community Groups & Associations

Aberchirder & District Community Association	01466 780512
Banff and Macduff Community Trust	01261 815185
Banff, Macduff & District Business Association	01261 832491
Cornhill Village Association	01466 751325
Crovie Preservation Society	01261 851176
Fordyce Community Association	01261 842951
Gardenstown Harbour Trustees	01261 851475
New Byth Community & Playing Fields Association	01888 544836
Portsoy & District Community Association	01261 842695

Local Rural Partnership

Banffshire Partnership - Community Transport	01261 843598
Banffshire Partnership - Developing Communities	01261 843286

Community Councils

Alvah & Forglen Community Council	01466 780275
Banff & Macduff Community Council	01261 815025
Cornhill & Ordiquill Community Council	01466 751326
Fordyce, Sandend & District Community Council	01261 843890
King Edward & Gamrie Community Council	01261 851616
Portsoy & District Community Council	01261 843354
Whitehills & District Community Council	01261 861742

Community Planning

Aberdeenshire Community Planning Partnership	01261 813305
--	--------------

Miscellaneous

Aberdeen Council of Voluntary Organisations	01224 358565
BRIDGE CVS	01771 624787
Development Trusts Association Scotland	0131 220 2456
Enterprise North East Trust	01467 672500
Rotary Club of Banff	01261 819831
Volunteer Centre Aberdeenshire	01346 585328

developing communities



“support for an active community”

community development

marketing support

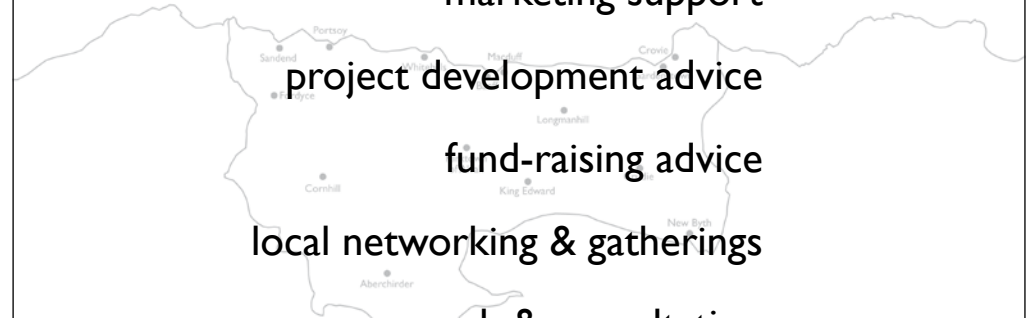
project development advice

fund-raising advice

local networking & gatherings

research & consultation

... a voice for the area



B P L

BANFFSHIRE PARTNERSHIP
DEVELOPING COMMUNITIES

The Old School Boyndie Banff AB452JT

T: 01261 843286 F: 01261 843598 E: bpl.contact@tiscali.co.uk

Discover and enjoy

THE SALMON BOTHY

at Portsoy

*... a superb example of a combined
icehouse with working and living accommodation*



A fascinating, charming and enjoyable place to visit with its museum, meetings room and genealogical research facility.

For opening times, call 01261 842951 or check www.salmonbothy.co.uk



PORTSOY SALMON BOTHY

Links Road, Portsoy, Banff. AB45 2SS



All proceeds from the Festival and related events go toward the
Scottish Traditional Boat Festival - Registered Charity No. SC037542