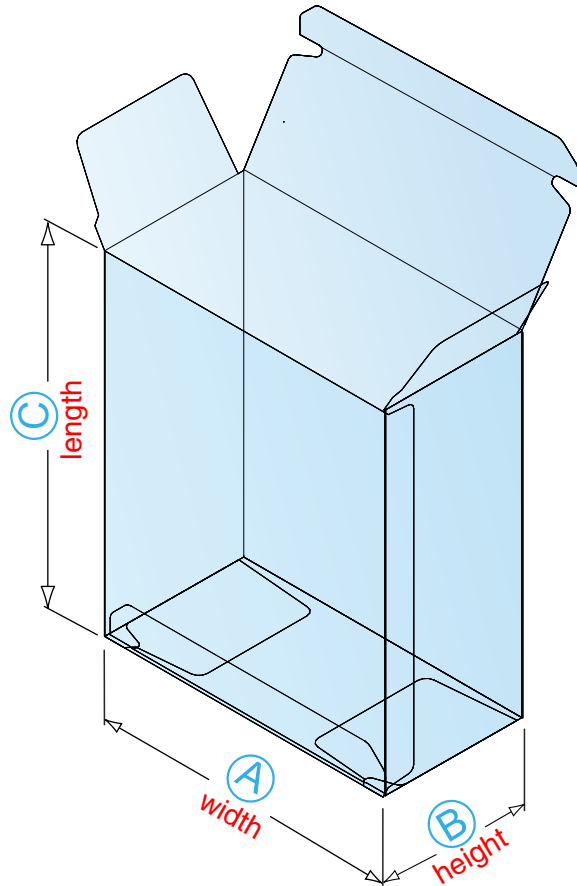
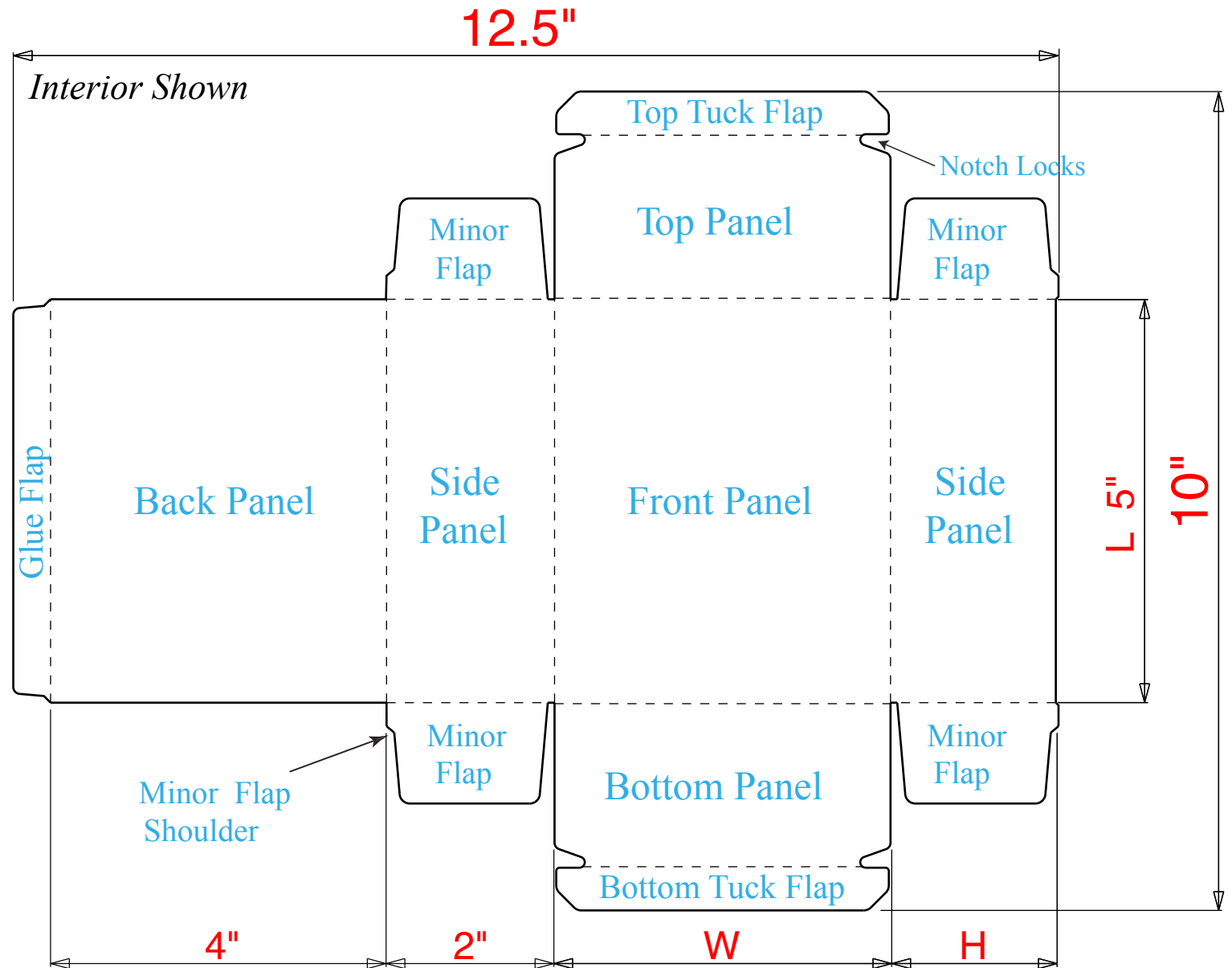


## Straight Tuck

Inside Dimensions  
4" X 2" X 5"

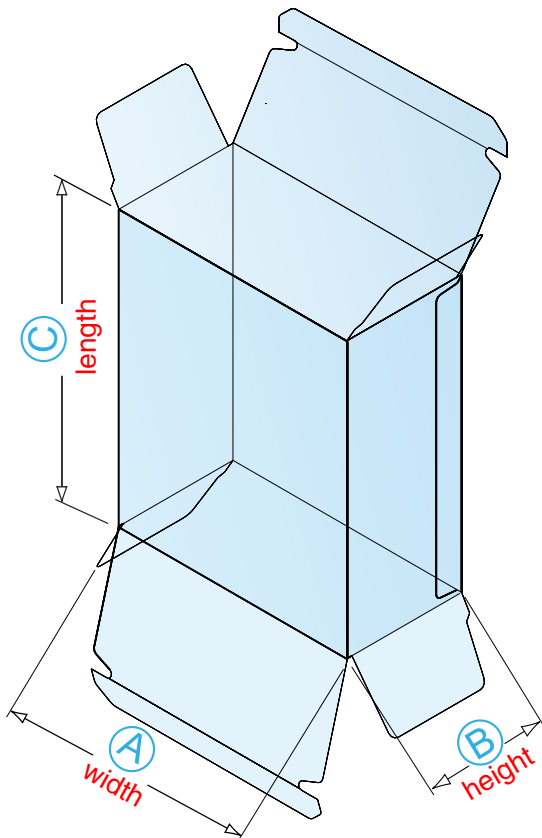


Straight Tuck cartons have both top and bottom panels that hinge off the carton's front panel. The top and bottom panels fold from the front and tuck to the rear, providing a clean front panel appearance. This style carton is appropriate for both hand and machine forming and filling applications.

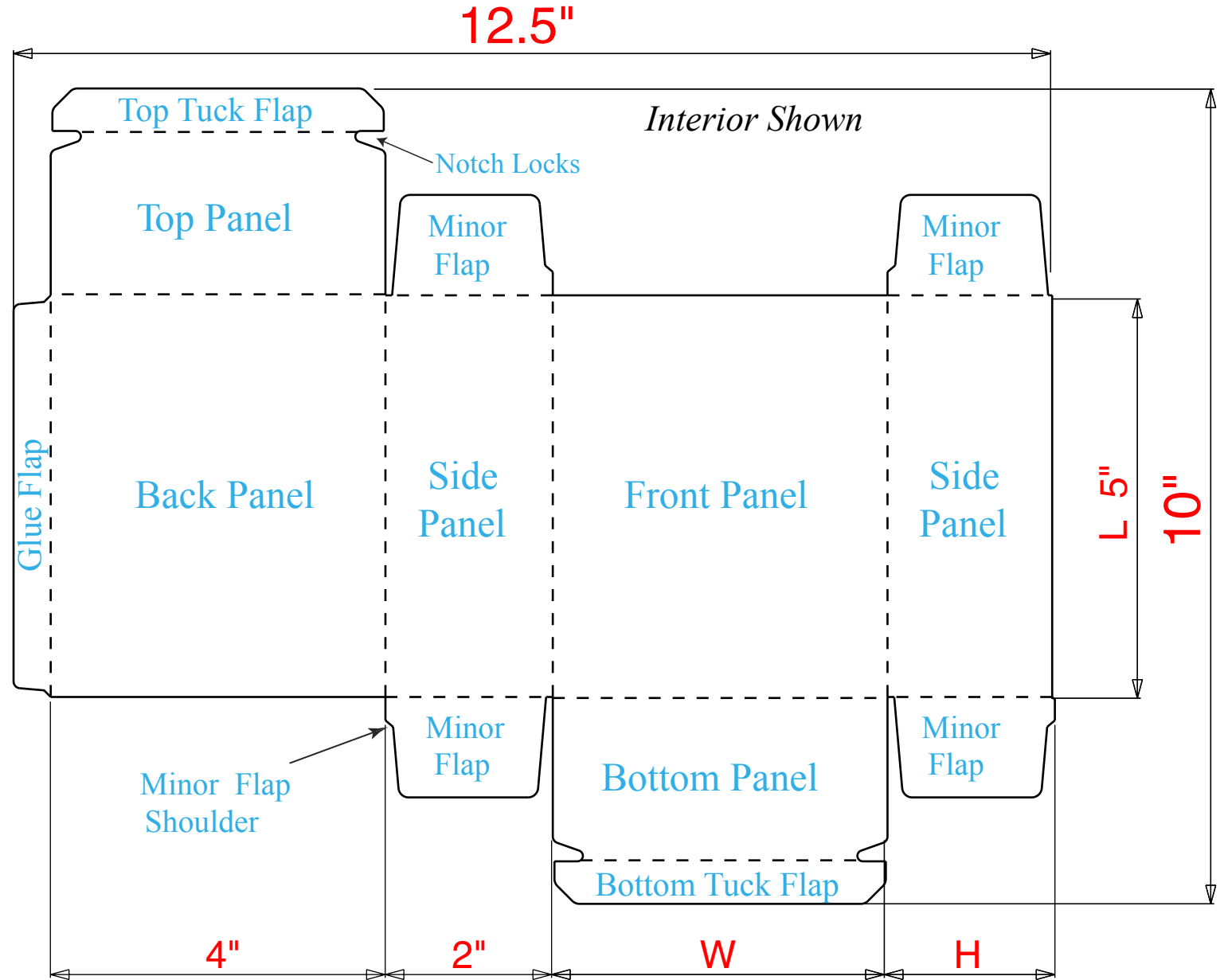


# Reverse Tuck

Inside Dimensions  
4" X 2" X 5"

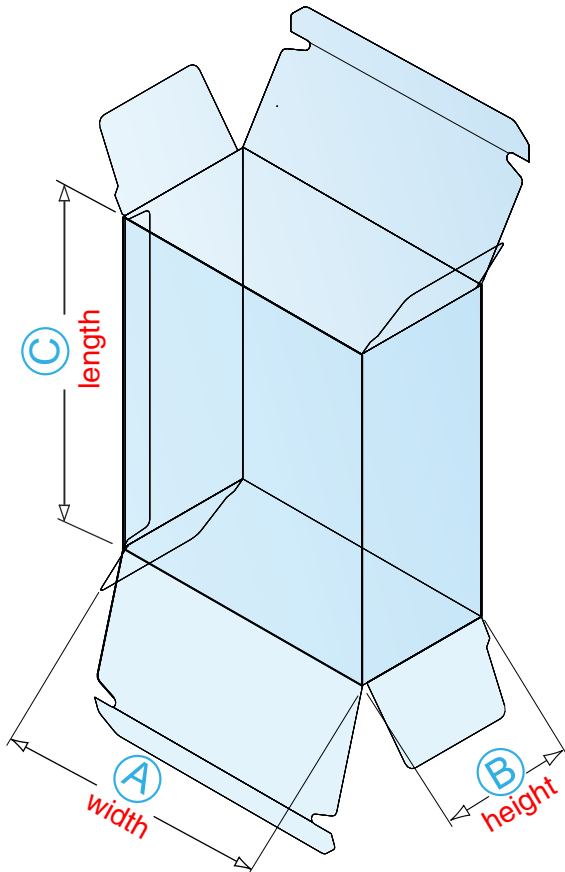


With a standard Reverse Tuck carton, the top panel hinges off the carton's back panel and folds and tucks to the front, while the bottom panel hinges off the front panel and folds and tucks to the rear. This style carton is appropriate for both hand and machine forming and filling applications.

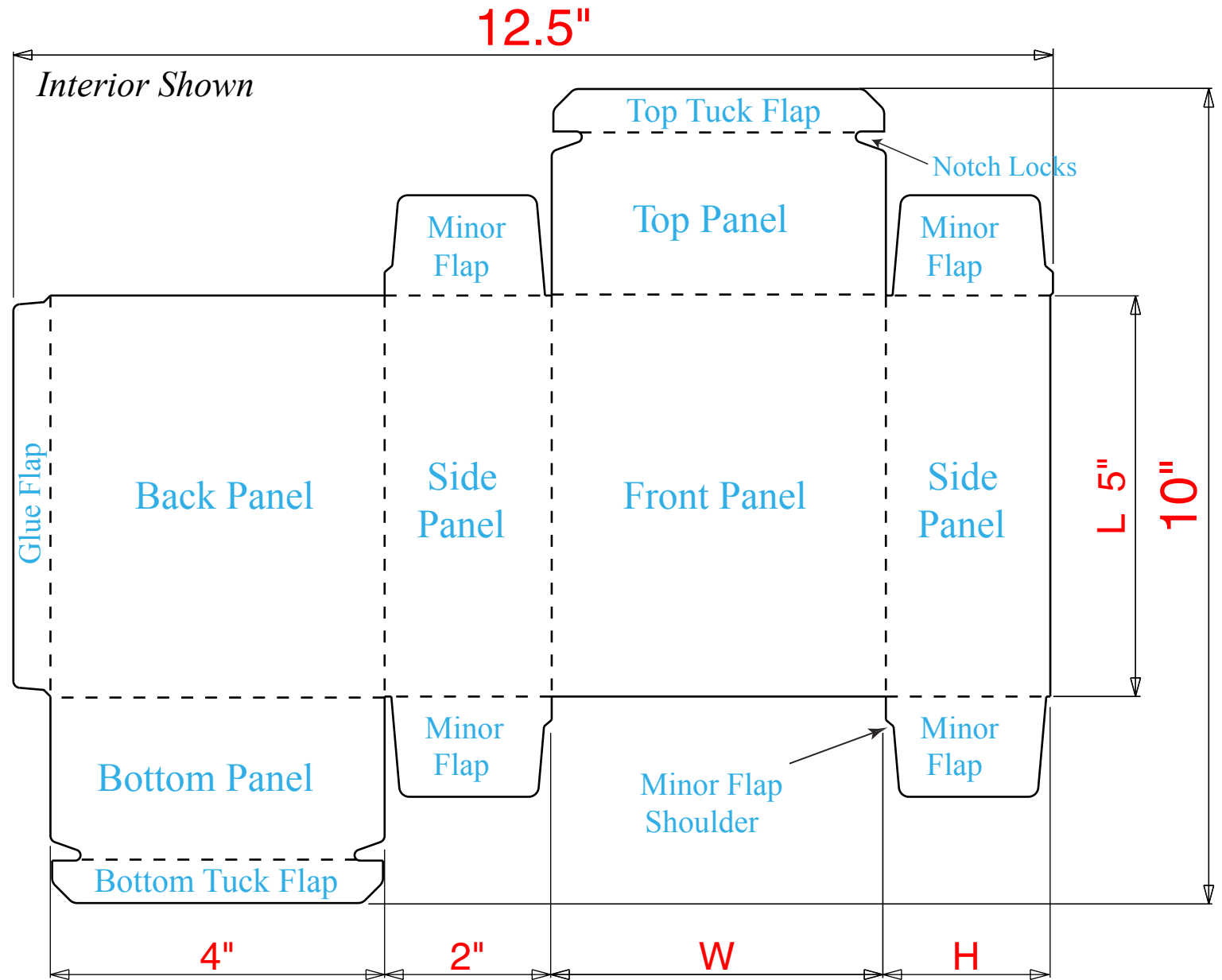


# French Reverse Tuck

Inside Dimensions  
4" X 2" X 5"

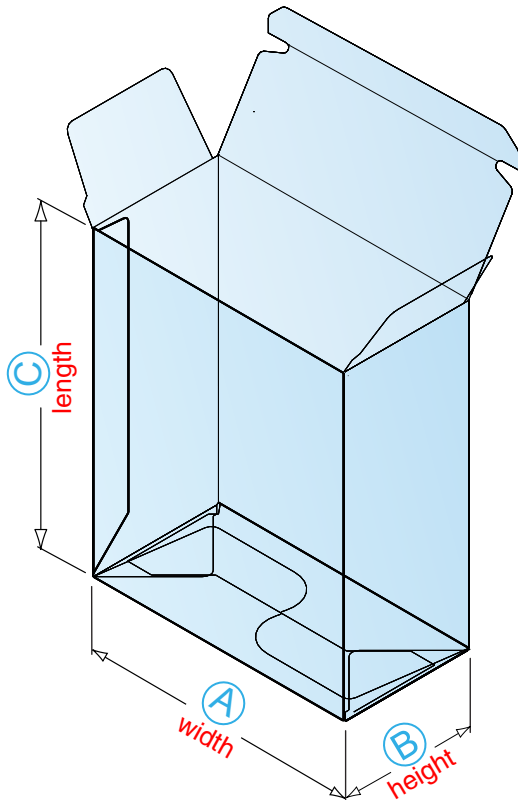


A French Reverse Tuck carton differs from a standard Reverse Tuck in that the top panel hinges off the carton's front panel and folds and tucks to the rear, while the bottom panel hinges off the back panel and folds and tucks to the front.

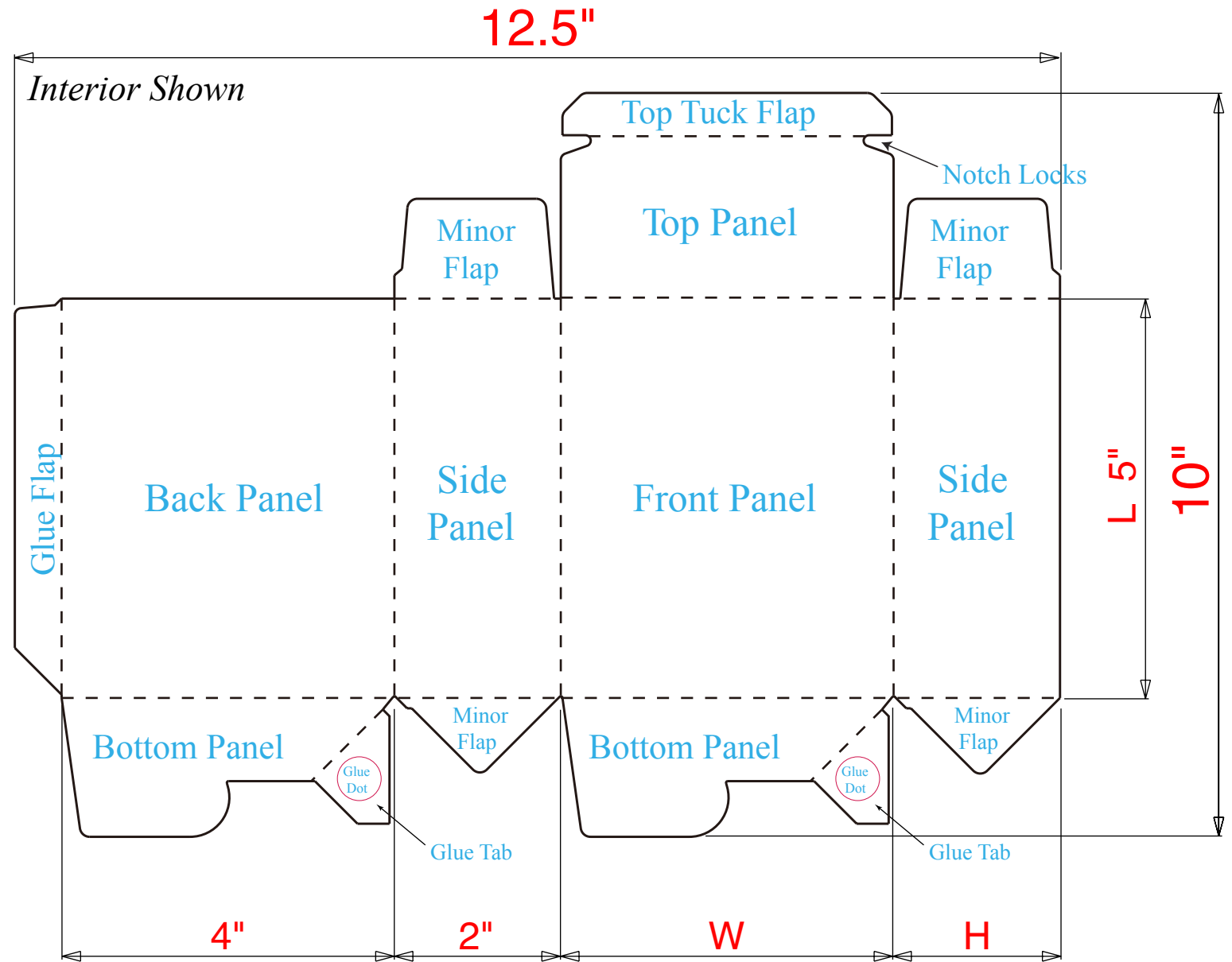


# Tuck Top, Auto-Bottom

Inside Dimensions  
4" X 2" X 5"

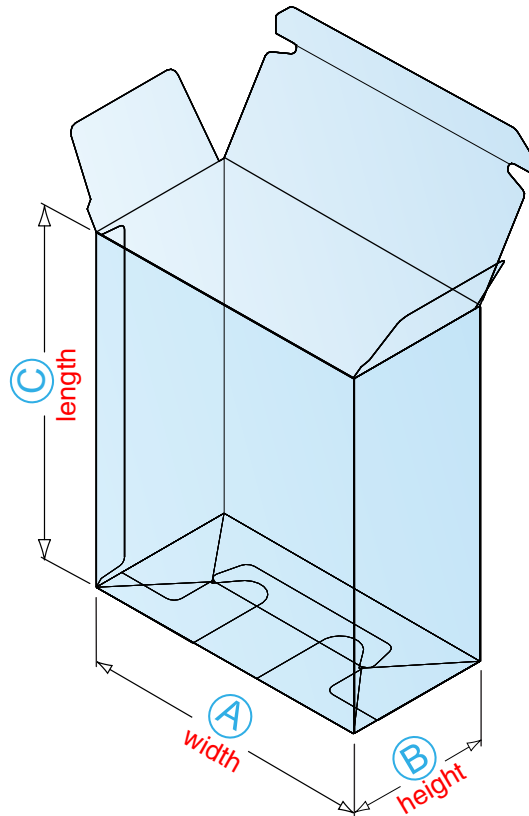


Auto-Bottom cartons are designed for efficient hand set-up and loading, and are generally used when faster set up is desired but production volume or the package's contents are not suitable for automated filling equipment. Bottom panels are pre-glued during the carton's manufacturing process.

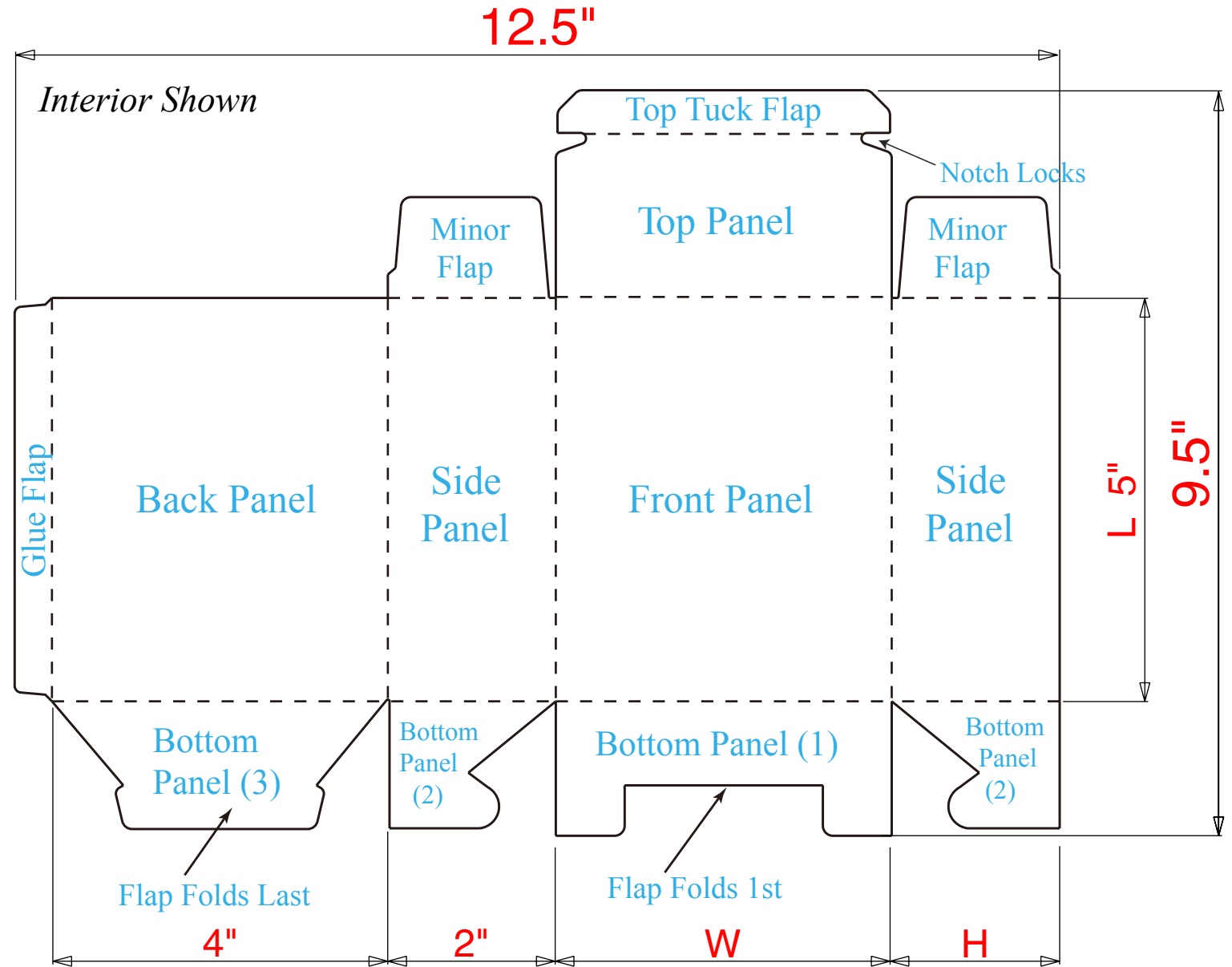


# Tuck Top, 123-Bottom

Inside Dimensions  
4" X 2" X 5"

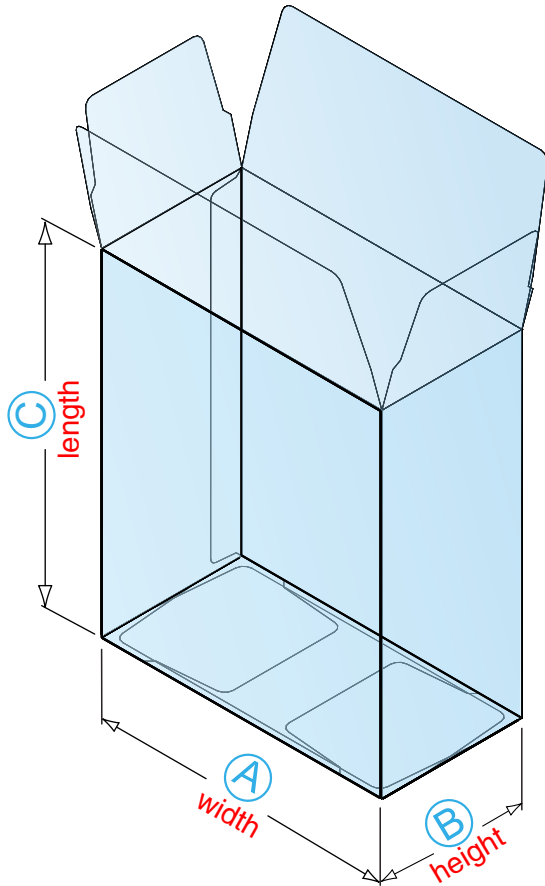


123-Bottom cartons are designed for efficient hand set-up and loading. Although not as efficient as Auto-Bottom cartons, this carton style is also used when faster set-up is desired but production volume or the package's contents are not suitable for automatic packaging equipment.

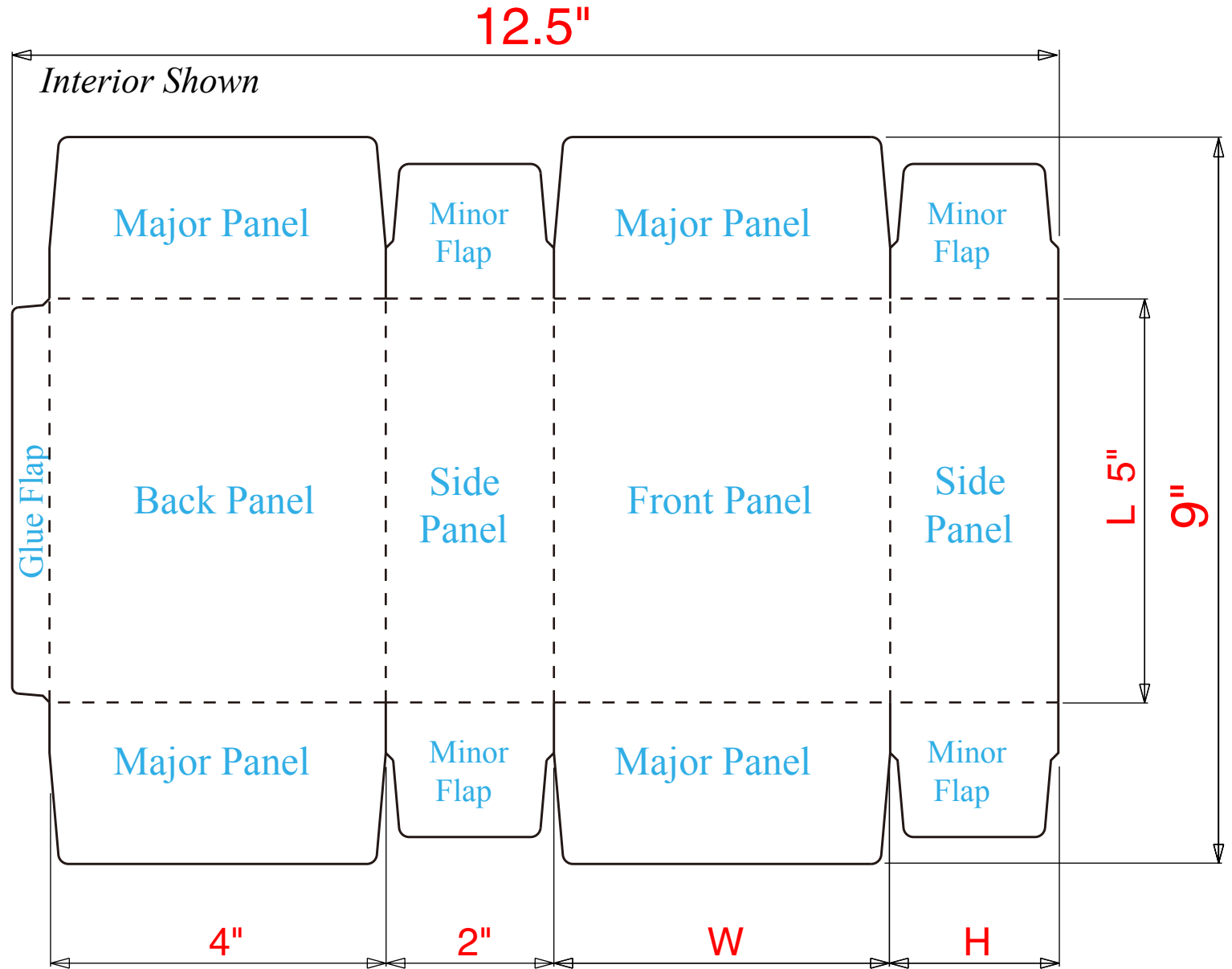


# Seal End

Inside Dimensions  
4" X 2" X 5"

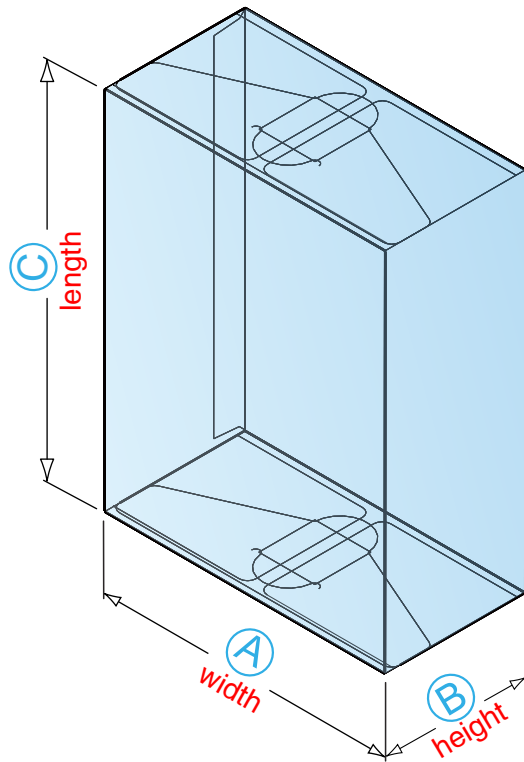


The Seal End carton is typically erected, filled and sealed on automated packaging equipment. Since the top and bottoms are glued closed, it offers tamper evidence as compared to tuck style cartons.

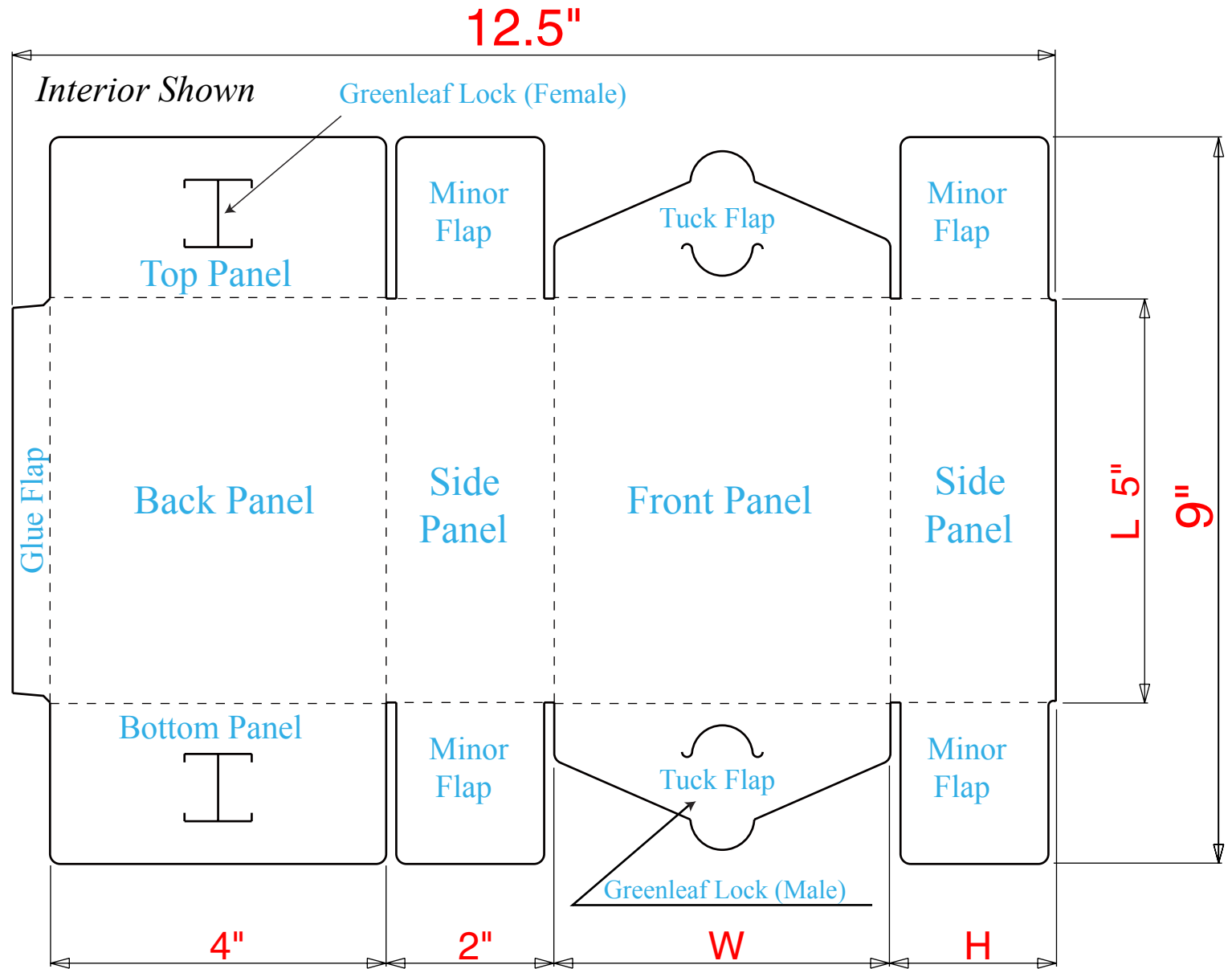


# Greenleaf Top & Bottom

Inside Dimensions  
4" X 2" X 5"

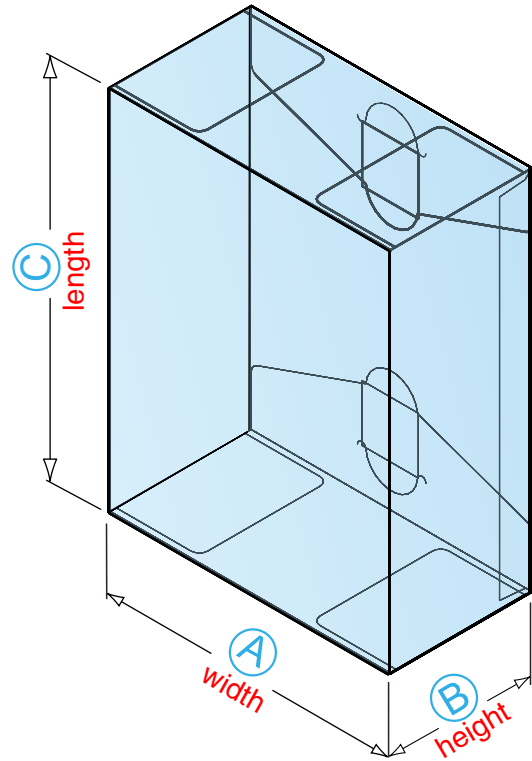


Greenleaf closures are used almost exclusively in plastic carton structures and will stand up to substantial abuse without disengaging. A Greenleaf Top & Bottom carton must be hand erected, filled and closed.

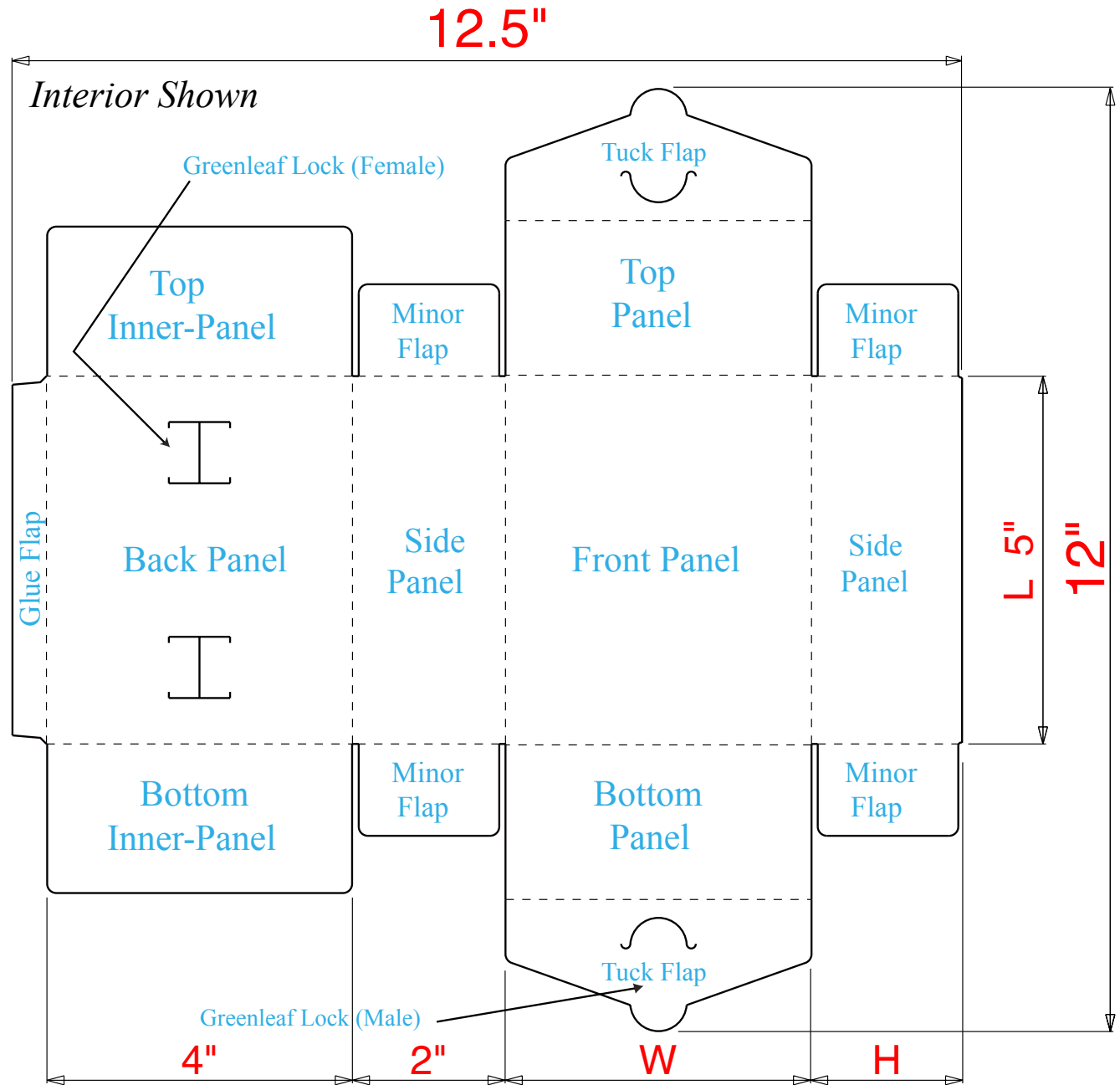


# Greenleaf Back

Inside Dimensions  
4" X 2" X 5"



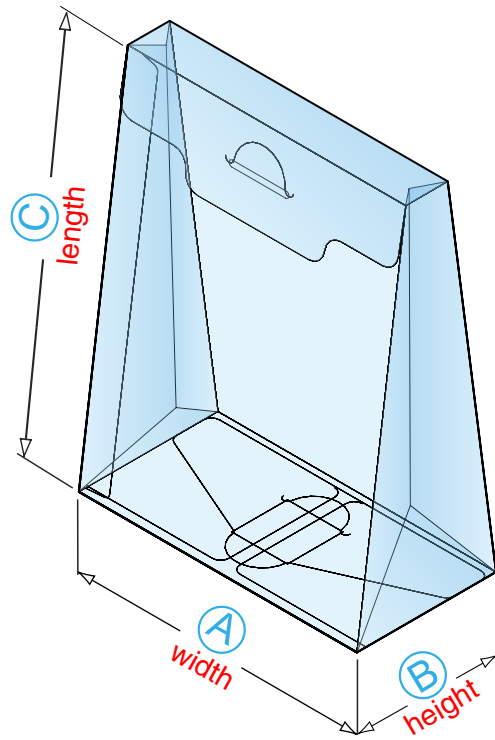
Greenleaf closures are used almost exclusively in plastic carton structures and will stand up to substantial abuse without disengaging. Greenleaf Back cartons must be hand erected, filled and closed. The locks on the back of the carton keep the front, top and bottom panels clear for graphic treatment.



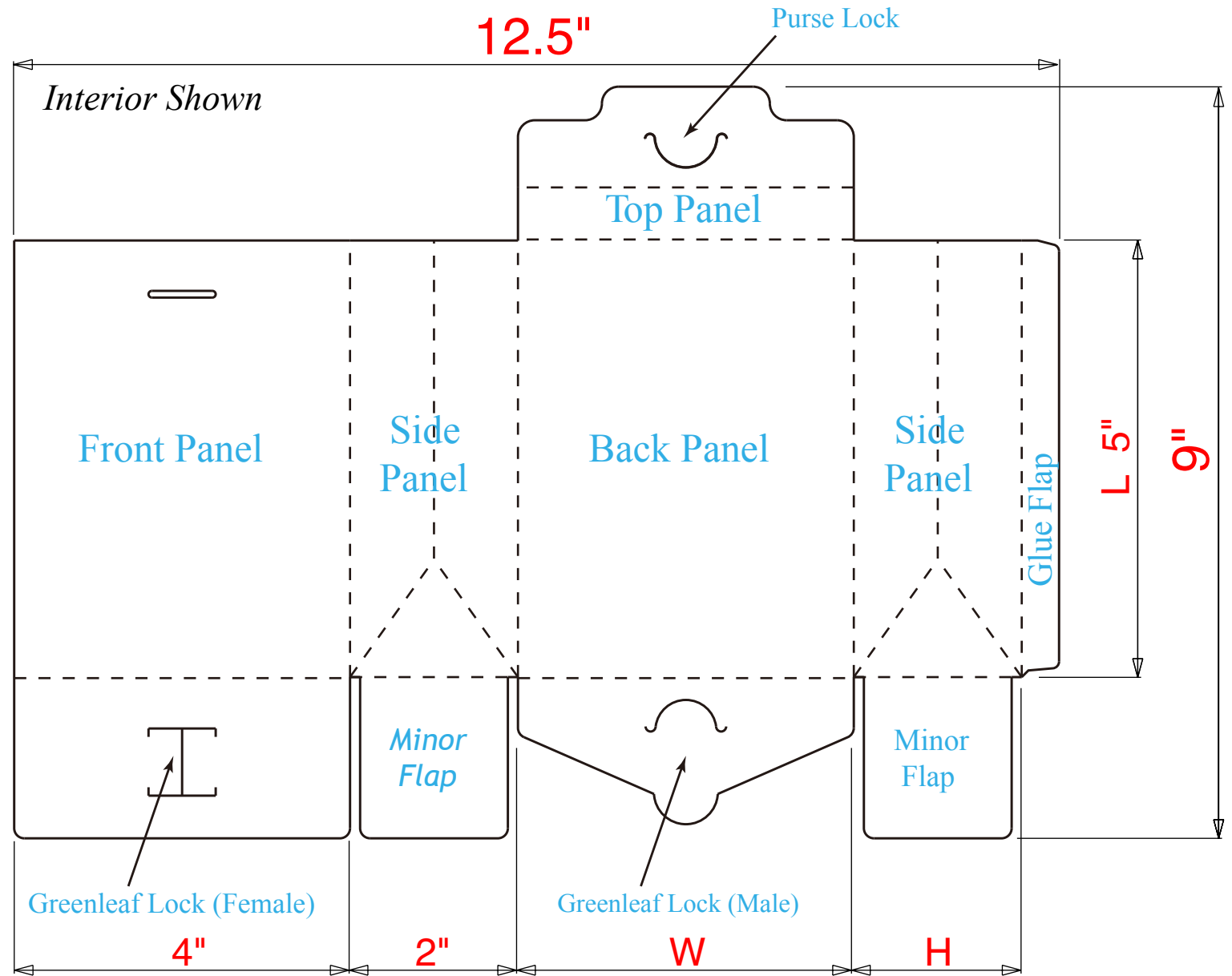


# Gusset-Side Tote

Inside Dimensions  
4" X 2" X 5"

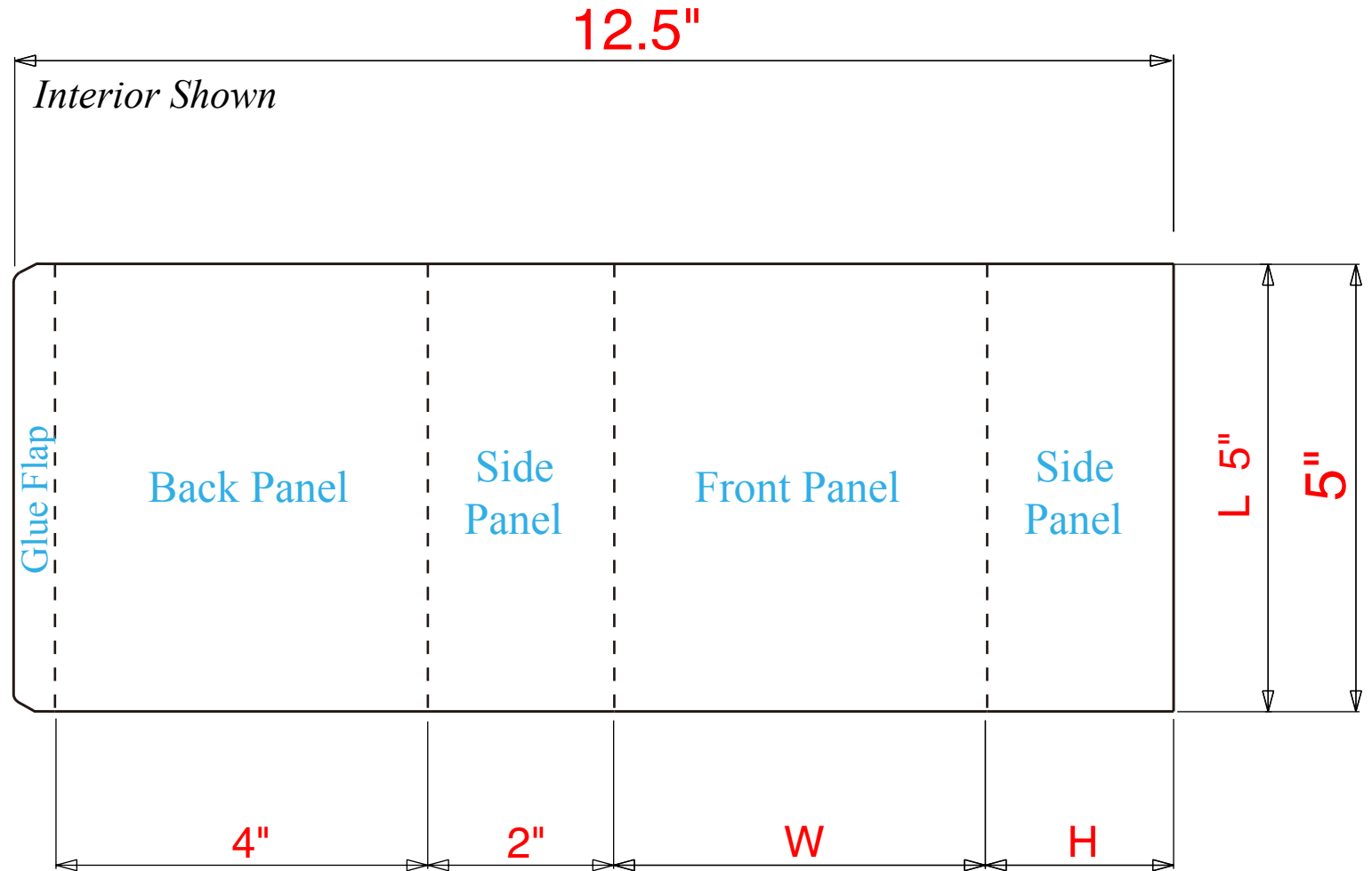
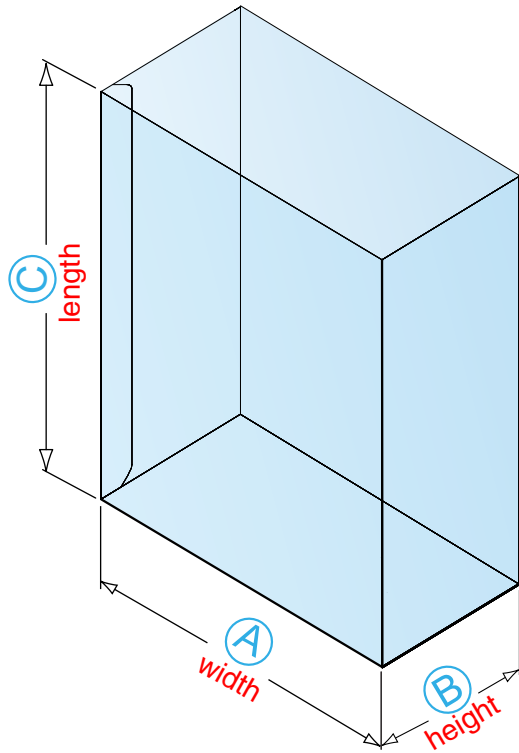


A Gusset-Side Tote has a Purse lock at the top and a Greenleaf lock at the bottom. The gusseted side panels help produce the appearance of a tote or purse, making this style carton especially popular for women's personal care products, cosmetics, fragrances and gift sets.



# Sleeve

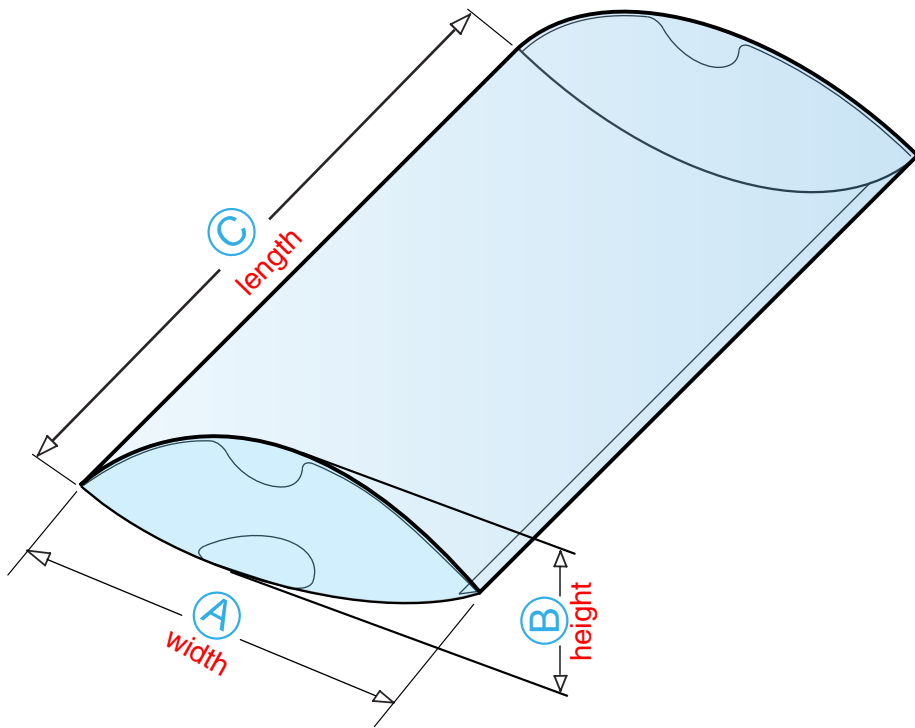
Inside Dimensions  
4" X 2" X 5"



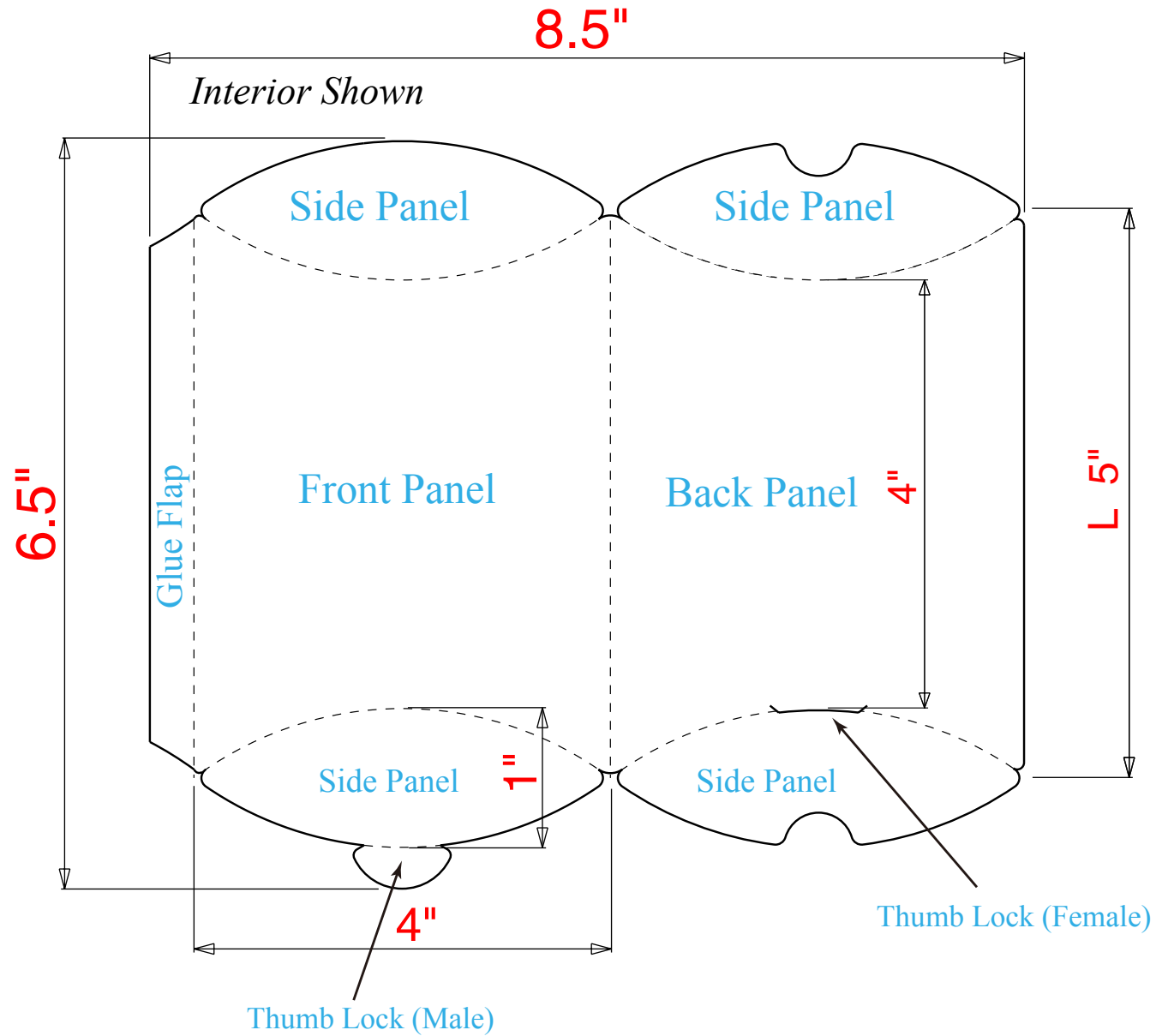
A Sleeve is used in combination with another packaging component. It's frequently used as a slip-on cover for a paperboard carton or tray, or an open set box structure. Sleeves can also be used in combination with injection molded or vacuum-formed plastic end caps or inserts.

# Pillow Pack

Inside Dimensions  
4" X 1" X 5"

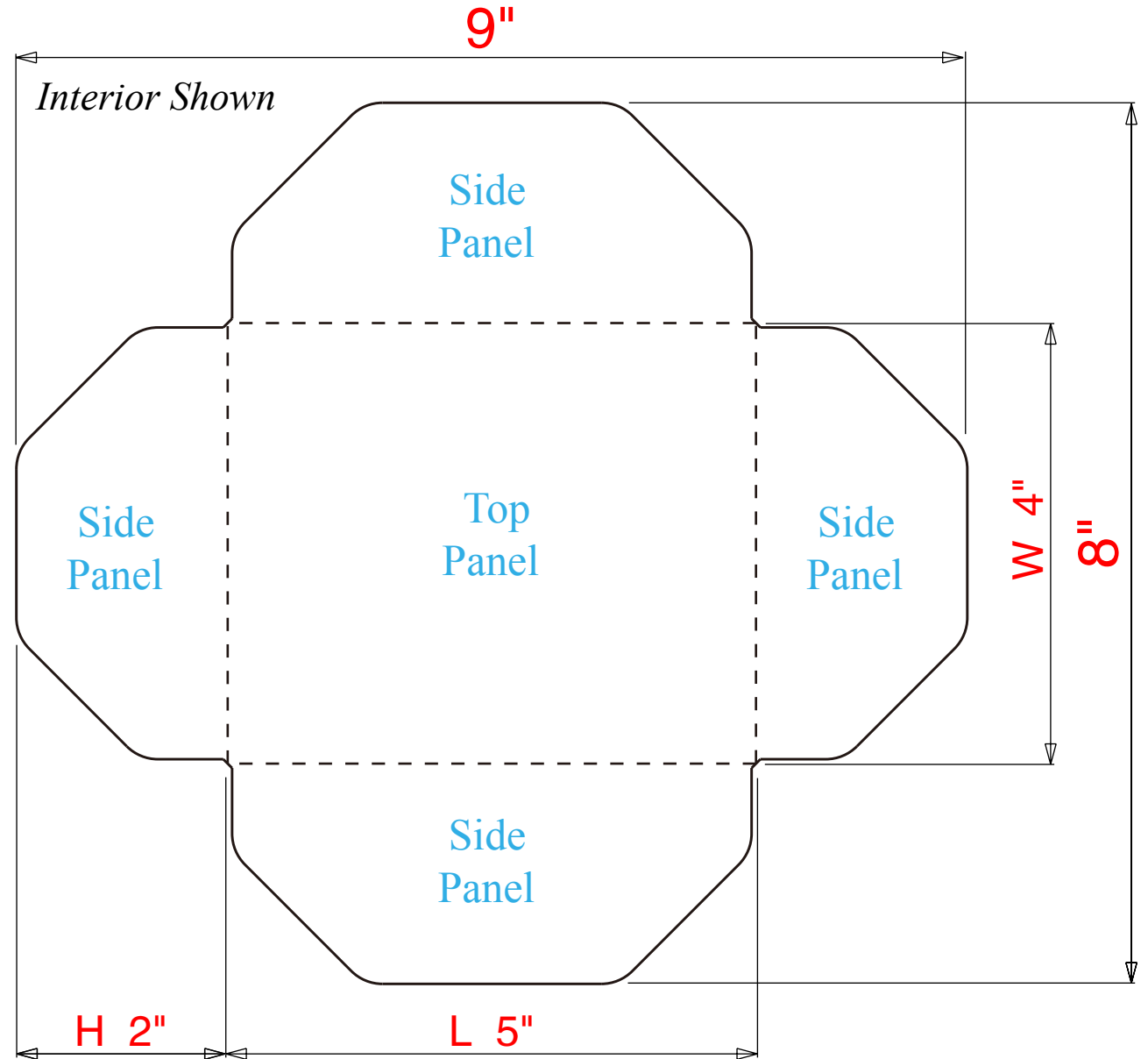
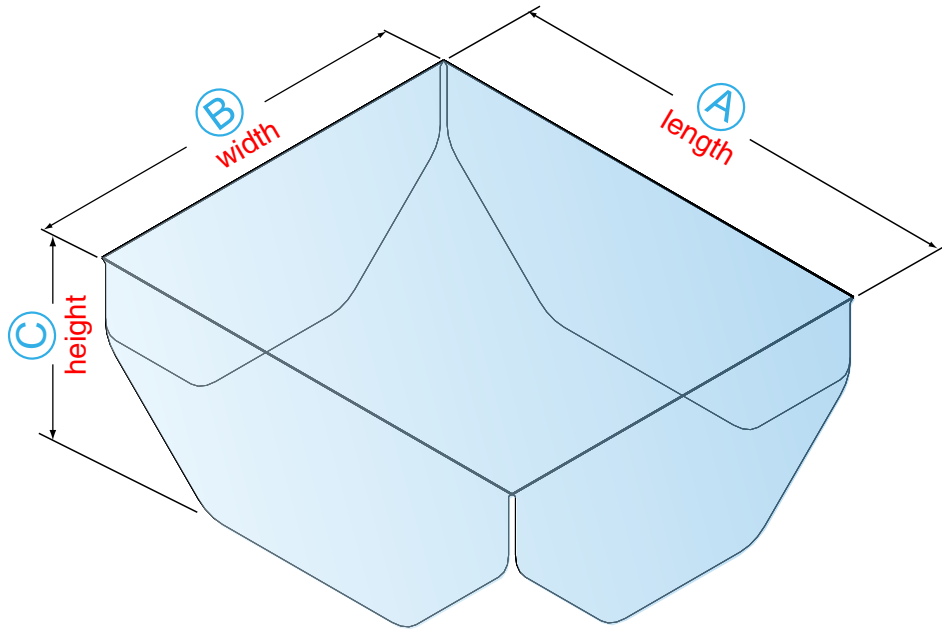


Pillow Packs are a cost-effective style of packaging, typically used for products of shallow depth or for bulk packs of small items. A wide variety of features can be included to provide added utility, i.e.: thumb locks, standing bottoms, or hang tabs.



# Dust Cover

Inside Dimensions  
4" X 2" X 5"



A Dust Cover is used in combination with another packaging component, typically a paperboard simplex tray or an open set box structure. It is a simple die-cut and scored blank that, as the name suggests, acts as a barrier to dust or debris. If glued in place, a dust cover also prevents product tampering.