

W&H PEACOCK

AUCTIONEERS & VALUERS

OCTOBER SALE OF
*Antique Furniture & Collectors' items
and Vintage & Collectable Toys*

VIEWING

Antique Furniture & Collectors' Items Vintage & Collectable Toys

Friday 28th September – 9am to 8pm,
Saturday 29th September – 9am to 4pm,
Thursday 4th October – 9am to 6pm,
Morning of sale from 9am

AUCTION

Antique Furniture & Collectors' Items Vintage & Collectable Toys

Friday 5th October 2018
Commencing at 11.00 am

LIVE INTERNET BIDDING



CATALOGUES

£5 by post, online at

www.peacockauction.co.uk

W&H PEACOCK
AUCTIONEERS & VALUERS

Do you have bottles of wine and spirits to sell at auction?

We invite entries of vintage and classic wines and spirits as well as more everyday drinks and we are happy to give free sales value advice. Contact the auctioneer Chris Armstrong wine@peacockauction.co.uk. We can accept entries at any of our Auction Centres or valuation days.

Bedford Auction Centre

Eastcotts Park, Wallis Way, Bedford, Bedfordshire MK42 0PE
01234 266 366 or wine@peacockauction.co.uk

www.peacockauction.co.uk

*Furniture, Rugs, Clocks,
Orientalware and Works of Art*



Furniture, Rugs, Clocks, Orientalware and Works of Art



Lot 8

1

A Georgian tilt-top table, the circular mahogany top on a birdcage mechanism, turned support and three splayed legs with pad feet, d. 87 cm
£100 - £150

2

A Victorian and later four-panel screen decorated with birds amidst foliage, h. 133 cm
£80 - £120

3

An American reproduction mahogany and marquetry games table with a serpentine front on square tapering legs, w. 92 cm *£100 - £150*

4

An early 18th century and later mahogany coffer with copper banding, on later carved feet, l. 124 cm *£200 - £300*

5

A late 19th/early 20th century oak child's rocking chair with bentwood arms and a bergere seat *£20 - £30*

6

A 19th century walnut coffer, the lid overhanging a dental-type cornice and seven carved panels, on claw feet, l. 132 cm
£150 - £200

Lot 2



7

A pair of mahogany D-end tables, forming a circular table, on tapering legs with block feet, d. 160 cm *£200 - £300*



Lot 6

8

A set of six Regency mahogany dining chairs, the bar backs over swags and drop-in seats on turned front legs *£300 - £400*

9

A nest of 19th century mahogany quartetto occasional tables, max. w. 56 cm *£50 - £80*

10

An early 20th century woolen runner, the red ground with a Tekke Turkoman-type pattern within five matching bands, 86 x 287 cm *£100 - £150*



Lot 11

11

An elm seated captain's chair with turned supports *£80 - £120*



Lot 4



Lot 12

12
A Charles II and later oak chest of four drawers on block feet, w. 108 cm *£200 - £300*

13
A Georgian mahogany card table, the fold-out surface over a curved frieze on turned legs with castors, w. 89 cm *£50 - £80*

14
A set of six 17th century and later Dutch oak dining chairs with shaped aprons, cabriole legs and shaped cross stretchers *£80 - £120*

16
A Caucasian Kazak rug decorated with rows of red, blue, green and gold geometric medallions within matching bands, signed 'Maja' to the reverse, 285 x 135 cm *£150 - £200*

Lot 16



17
A set of eight Victorian rosewood balloon back dining chairs with drop-in seats, together with a mahogany and strung twin-pedestal dining table with one fitted leaf, max. l. 226 cm *£200 - £300*

15
A 20th century woollen rug, the red ground with blue floral borders, 470 x 370 cm *£200 - £300*

Lot 15 (detail)



18

A Georgian mahogany and strung demi-lune card table on square tapering legs, w. 85 cm
£80 - £120

19

An 18th century oak tilt-top table, the circular top on a turned column, three splayed legs and pad feet, d. 67 cm
£50 - £80

20

A pair of Charles II and later oak and bergere hall chairs with crown finials, carved backs and scrolled feet joined by matching carved stretchers
£100 - £150

21

An 18th century-type wall mirror, the rectangular plate within a giltwood framed flanked by a pair of pilasters, h. 77 cm
£40 - £60

22

A wall mirror, the rectangular plate within a giltwood and velour frame of castellated form, h. 85 cm
£100 - £150



Lot 22



Lot 17

All estimates exclude buyer's premium of 21% including VAT which is payable in addition

 @WHPeacock  /WHPeacockAuctioneers



Lot 23

23

A 19th century oak chest of two short over three long drawers on splayed bracket feet, w. 103 cm
£100 - £150

24

A 19th century rosewood canterbury with a single drawer on turned feet with castors, w. 60 cm
£150 - £200

25

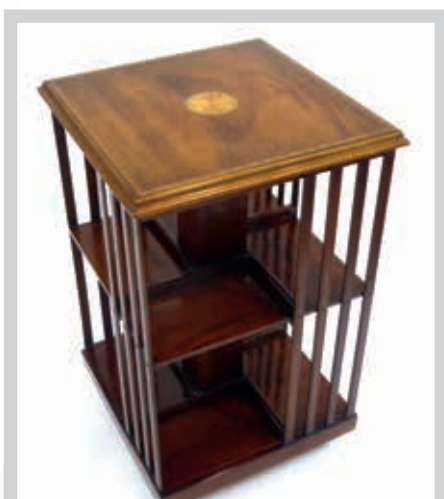
A late 19th/early 20th century rug, the red ground decorated with a Tekke-type pattern, 152 x 134 cm
£50 - £80

26

A George III elbow chair, the mahogany frame with a shaped apron and cross stretchers on straight legs
£60 - £80



Lot 24



27

A 20th century mahogany, satinwood and ebony strung revolving bookcase, h. 80 cm
£60 - £100

28

An Edwardian walnut and tapestry upholstered armchair on cabriole front legs
£120 - £150

29

A Georgian mahogany pot cupboard with two-tiers and a single drawer on square straight legs, w. 35 cm
£40 - £60

30

A Commercial Arts & Crafts oak sideboard, the gallery with six convex glass panels over a mirrored back, bow-front, two drawers and two doors, w. 152 cm
£200 - £300



Lot 31



Lot 30

31

A 19th century rosewood four-tier what-not with a single drawer, turned support and castors, w. 52 cm *£150 - £200*

32

A Victorian mahogany breakfast table, the circular tilt-top on a column, platform base and three feet, d. 100 cm *£50 - £80*

33

A late 18th century/early 19th century and later longcase clock, the painted face with seconds and date dials, Wd. Eckford, Northampton, within an oak case *£200 - £300*

34

An 18th century and later 'cottage' longcase clock, the painted face with a dated aperture, W.M. Wenham, Watton, in an oak case *£80 - £120*

35

A Georgian oak bureau, the fall-front enclosing a fitted interior over an arrangement of two short and two long drawers on bracket feet, w. 99 cm *£60 - £100*



Lot 35

Lot 33





Lot 36

36
A William & Mary oak lowboy/side table, the frieze with a single drawer on bobbin turned legs joined by stretchers on turned feet, w. 82 cm
£500 - £800

37
A 19th century gilt plant stand with bergere side panels and swag decoration on splayed legs
£40 - £60

38
A mid-20th century woolen rug, the salmon ground with medallions and motifs within blue bands, 193 x 93 cm
£50 - £80

39
A mid-20th century woolen rug, presumably Afghan, the red and blue ground with a diamond medallion within six matching bands, 180 x 113 cm
£50 - £80

40
A late 19th/early 20th century Indian rug, the red ground with six medallions within red, gold and blue bands, 134 x 117 cm
£80 - £120

Lot 40



41
A late 19th century mahogany rolltop desk with a brass gallery over an arrangement of nine drawers and two slides, on plinth bases, w. 122 cm
£100 - £150

42
A Victorian mahogany linen press, the two doors over a single drawer on a plinth base, w. 133 cm
£80 - £120

41-51
Spare Lots



Lot 37



Lot 52

52

A late 19th/early 20th century Chinese stained and carved pine altar table, w. 75 cm

£100 - £150

53

A late 19th/early 20th century Chinese hardwood wall mirror of rectangular form, typically carved, 121 x 56.5 cm

£150 - £200



Lot 54

54

A mid-20th century Korean bamboo work altar table of typical form having two frieze drawers, w. 89 cm

£50 - £80

55

A late 19th/early 20th century Japanese carved and lacquer work two section screen relief decorated in mother of pearl and bone with birds seated on blossoming branches, each panel measures 179 x 79 cm

£60 - £100

56

A Chinese silk scroll painted with prawns, signed and inscribed, image measures 81 x 35.5 cm, boxed

£150 - £200

57

A collection of mid-20th century and later silk dresses and other clothing in the Oriental manner (qty)

£50 - £80



58

An early 20th century Japanese silk kimono decorated with sprays of blossoming chrysanthemum on a shaded blue ground, together with a Japanese handbag impressed with traditional scenes (2)

£100 - £150

Lot 55



59

A Chinese hardwood carving modelled as figure riding a qilin, h. 38 cm (af) £80 - £120

60

A pair of Chinese hardwood figures each modelled as a gentleman taking tea from a teapot, a chicken at his feet, h. 31 cm £40 - £60

61

A Chinese stoneware bottle vase decorated in a plain kingfisher blue glaze, h. 24 cm, together with a blue and white ginger jar and cover and a blue and white teapot (3) £60 - £80



Lot 62

62

A Cantonese tray of trefoil form typically decorated with traditional scenes, birds and insects, w. 26 cm (af) £40 - £60

63

A near pair of Cantonese side plates of circular form typically decorated with traditional scenes, birds and insects, d. 20.5 cm £30 - £40

64

A group of nine Cantonese saucers and saucer dishes typically decorated with traditional scenes, birds and insects, max d. 13 cm £30 - £40

Lot 63



65

A late 18th century water jug of pear shaped form decorated in the Imari palette with bamboo and flowering shrubs and having a beak spout, h. 15 cm (af) £120 - £150



Lot 65

66

A late 19th century Chinese blue and white teapot and cover of globular form decorated with flowering shrubs, h. 13.5 cm (af) £20 - £30

67

A pair of mid-20th century Chinese plaques, each decorated in coloured enamels with birds and insects amongst rocky landscapes, 40 x 16 cm £30 - £50

68

A Satsuma miniature vase of tapered cylindrical form typically decorated with figures at leisure, signed to base, h. 9 cm £40 - £60

69

A Chinese celadon vase of squat ovoid form shallow relief decorated with cherry blossom, character mark to base, h. 21.5 cm £40 - £60

70

A Chinese slab vase relief decorated with script and traditional figures in a plain cream glaze, impressed mark to base, h 12 cm £60 - £100

71

A Chinese cylindrical vase/pot painted in coloured enamels with a traditional landscape and script on a white ground, painted mark to base, h. 15.5 cm £100 - £150



Lot 71

72

A Chinese hardstone carving modelled as an emaciated man, possibly Shakyamuni, h. 8.5 cm
 £40 - £60

73

A terracotta studio pottery vase of mallet form decorated in a plain blue glaze, h. 17.5 cm
 £40 - £60

74

A late 19th/early 20th century Chinese blue and white ginger jar decorated with figures at leisure, h. 22.5 cm
 £30 - £40

75

A pair of 19th century Chinese dolls modelled as an empress, h. 16.5 cm and her male assistant, together with three painted boxwood carvings depicting yawning gentlemen and a further carving (6)
 £60 - £100

76

A Japanese carving modelled as Daikoku seated on a plinth and contained within a gilt lacquered case, h. 14 cm, together with a five stage lacquer work inro, a canework pouch and a comb (4)
 £100 - £150

77

A Japanese brown patinated bronze hand mirror relief decorated with cranes and a tortoise beneath a pine tree, l. 27.5 cm, together with a Japanese cast metal koro, a bronze implement, three Chinese oval tokens and an unrelated replica coin (7)
 £100 - £150

78

A Chinese lacquered metal five stage tiered bell
 £30 - £50

79

A Japanese export coloured metal desk stand with lighter, ashtray and cigarette sections modelled as Mount Fuji, w. 25 cm, cased
 £20 - £30



Lot 80

80

A mid-20th century Chinese brass metal mounted casket centrally inset with a carved jade roundel depicting stylised birds, w. 16.5 cm, with lock
 £80 - £120

81

A collection of fourteen mid 20th century bone and other snuff bottles, each decorated with an erotic scene, together with a similar box (15)
 £30 - £50



Lot 77 (part)



82

A large collection of early 20th century and later lacquer work boxes, trays and other items, together with Japanese export fans, calligraphy brushes and other items (qty) £200 - £300

83

A Chinese blue and white ginger jar of typical form decorated with prunus, four character mark to base, h. 12 cm £60 - £80

84

An early/mid 20th century Japanese eggshell porcelain tea service typically decorated with birds amongst traditional landscapes (28) £40 - £60

85

A cast metal figure modelled as a Siamese dancer, h. 20.5 cm £30 - £40



Lot 88

88

A late 19th century Chinese woodblock print depicting two figures calling to the moon, signed, 19.5 x 14.5 cm £30 - £50

89

A pair of early 20th century Japanese longstitch embroideries depicting cranes amongst irises on a green silk ground, each 100 x 49 cm £80 - £120

90 - 100

Spare lot



Lot 86

86

An early 20th century silk panel worked in gold and silver coloured threads and depicting a bird in flight, 26 x 28.5 cm £20 - £30

87

A late 19th/early 20th century hand painted Tibetan thanka of typical composition, 42 x 31.5 cm £50 - £80



Lot 82 (part)



Lot 101

101

A 19th century mantle timepiece, the French movement stamped A&N 56980, the enamelled convex dial with floral swags and Arabic numerals, within a faux tortoise-shell and gilt metal boule-type case, h. 20 cm £200 - £300

102

An 'Improved Magneto-Electric Machine arranged for medical application' in a mahogany case £40 - £60

103

A Victorian copper samovar with brass tap and scrolled handles, h. 46 cm £40 - £60

104

A Victorian oak and brass mounted desk tidy with a pair of glass inkwells (af) and a two-way drawer, w. 26 cm £30 - £40

105

A pair of French table centres, the cut glass bowls raised on metalwares bases, stamped Depose 250, h. 25 cm £50 - £80



Lot 108



106

A 19th century French mantle clock, the Japy Freres movement striking on a bell (deficient), the enamelled dial with Roman and Arabic numerals, within a gilt metal scrolled and foliate case decorated with a pair of crossed instruments, h. 66 cm £200 - £300

107

A pair of late 19th century gilt metal foliate three-sconce wall brackets £150 - £200

108

A late 19th century gilt metal and bronze two-sconce wall bracket of figural form £80 - £120

109

Spare Lot

Lot 117

110

A brass table centre, the glass bowl resting over a swag-decorated frieze, with a pair of handles over the tapering base, h. 20 cm *£30 - £40*

111

Spare Lot

112

A late 19th/early 20th century bamboo and horn handled riding crop *£30 - £40*

113

A walking cane, the silver pommel modelled as a whippet, London 1911 *£40 - £60*

114

A Victorian riding crop with a silver mount and horn handle, London 1894 *£60 - £80*

115

A Second World War American 1917-Pattern Remington bayonet and scabbard *£60 - £100*

116

A Railway Supplies Co. Ltd. 'The Adlake Non-Sweating Lamp' *£30 - £40*

117

A boxed French brass Mark VI saxophone by Henri Selmer, M. 209947 *£1800 - £2200*



119

An early 20th century bakelite and brass mounted No. 2 candlestick telephone *£30 - £40*

120

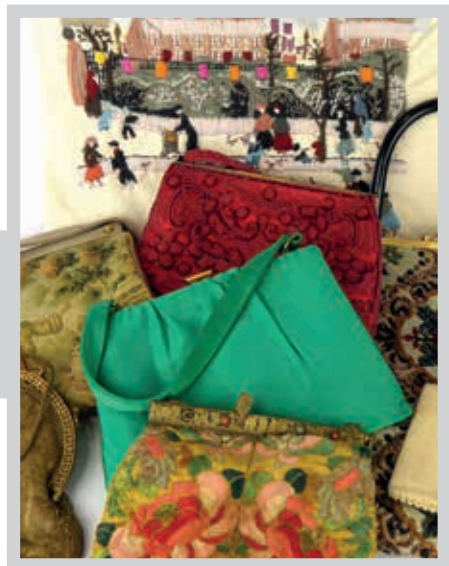
A silk top hat by Pro Patria, together with a Best of London bowler hat and a tan leather hat box *£40 - £60*

121

A pair of fabric, ceramic and gilt painted ladies legs *£30 - £40*

118

A group of 19th century and later needlework bags, including one with a gilt metal filigree work clasp, together with a Lowry-style needlework picture *£50 - £80*



Lot 113

122

A 19th century double timepiece and aneroid barometer by Alibert, within a gilt metal and enamelled case modelled as the Prince of Wales' feathers with the shaped coronet and motto 'Ich Dien', on an marble and gilt metal base, the clock numbered 1617, h. 25 cm

£200 - £300



123

A Victorian brass oil lamp by Hinks with a cranberry glass reservoir and a matching moulded shade, h. 60 cm

£80 - £120

124

A cast metal novelty desk piece modelled as a bucking mule, inscribed 'Always did 'sprise a mule', w. 24 cm

£100 - £150

125

After Charles Marion Russell (1864-1926), a bronze figure modelled as a cowboy riding a bucking bronco on a naturalistic base and marble plinth, h. 54 cm

£250 - £300



Lot 125

126

A late 19th century Venetian wall bracket, w. 29 cm

£30 - £50

127

A glass dome covering an artificial floral display, h. 34 cm

£40 - £60

128

A Duplex brass and ceramic oil lamp, transfer printed with a toy advert 'Hobby-horses, tops, shuttlecocks...', with an etched glass shade and a funnel

£50 - £80

129

J Lyons & Co., a music stand with an adjustable Elkington plate bracket on an oak column, h. 55 cm

£40 - £60



Lot 129

130

A 20th century brass four-branch electric table lamp with foliate formed branches on a mahogany base, h. 67 cm *£40 - £60*

131

Taxidermy: a reptile skin, believed to be an iguana, together with a woodpecker *£50 - £80*

132

A wickerwork sewing basket containing bone fittings, together with a group of purses, tortoise-shell spectacles, whiteware, needlework etc. *£40 - £60*

133

A 19th century octagonal wall-clock, the face with Roman numerals, Fehrenback Bishops Stortford, within a rosewood and brass inlaid case, d. 33 cm *£120 - £150*

134

A Victorian mahogany stationary cabinet, w. 31 cm, containing a pack of 'De La Rue & Co's Thin City Ivory Visiting Cards' with the copper plate *£30 - £50*

135

A 19th century brass table mirror, the circular plate on an adjustable column with four collapsible legs, d. 17 cm (mirror only) *£40 - £60*



Lot 136

136

A Negretti & Zambra No. R/7806 barograph with a Regent 'Jewelled Movement', w. 42 cm *£300 - £500*

137

A pair of Neo-Classical copper oval wall plaques relief decorated with mythical scenes, together with a brass mounted blotter *£50 - £80*

138

A 19th century brass desk tidy with two inkwells, later mounted with a desk lamp, the green glass shade on an adjustable flexi-shaft *£80 - £120*

139

An early 20th century brass desk lamp with an adjustable flexi-shaft *£30 - £50*



Lot 135



Lot 138

Lot 140



140

An early 20th century banker's/desk lamp, the copper shade on a brass column support and matching base, h. 48 cm

£100 - £150

141

A French mantle timepiece, the dial with Arabic numerals, within a chinoissire case, h. 12 cm

£40 - £60

142

An advertising sign for 'Blue Bell Binder Twine' together with a Dr Scholl's Foot Powder container

£40 - £60

143

Trench Art: a brass model of a saloon car, a shell on stand and a copper cigarette holder with a Sandown Park Club Visitor label hanging from the finial

£60 - £100



Lot 143

144

A Mont Blanc Meisterstück ball point pen together with a matching ink pen, each in dark red with gilt mounts surmounted by white stars, in a pouch

£150 - £200



145

A collection of fifteen Parker, Sheaffer and Paper Mate pens and refills contained in a fitted two-drawer walnut finished collectors case including a Parker '51' demi-fountain pen with a gold coloured lid, a Sheaffer Imperial Brass fountain pen etc.

£150 - £200



Lot 147

146

An Edwardian tortoise-shell stamp holder with a silver label, Birmingham 1901, w. 9 cm

£30 - £50

147

A novelty glass slide depicting Mr Punch, the glass front sliding to change the length of his nose, Evers Leeds, together with a brass figure modelled as Mr Punch on a column and tiered base, h. 21 cm

£100 - £150

148

A Second World War Clinometer sight, Mark IV, No. 10811, dated 1941

£30 - £40

149

A 19th century brass snuff box, inscribed TMP, the push-button concealing a hidden trap pin, w. 7.5 cm

£60 - £80

All estimates exclude buyer's premium of 21% including VAT which is payable in addition

@WHPeacock /WHPeacockAuctioneers



Lot 150

150

A group of five 19th and early 20th century brass and copper snuff boxes including 'Rider Maritime Pit', 'Labor Ipse Voluptas', 'John Shellard Ball Cottage 1900', together with a 19th century 'The Clifton' cigar cutter *£80 - £120*

151

A 1914 brass snuff box inscribed 'F.A. Broughton Mariner's Inn Merthyp' together with a horn snuff box *£30 - £50*

152

A box constructed from material taken from the Airship Mooring Mast passenger lift, Cardington, containing a group of medals awarded to 10456 Pte. J. Dewar Bedford Regt. including a First World War trio, a Territorial Medal and an uninscribed 1939-1945 Medal, together with a 1939-1945 Star and an Italy Medal *£40 - £60*

153

A O.H.M.S. box containing three Second World War medals awarded to Pilot Officer E.T. Watkin including a 1939-1945 Star, a 1939-1945 War Medal and an Air Crew Europe Star, together with a brass oak leaf, not listed *£40 - £60*

154

A group of 1950's Butlin's enamelled badges together with a 'Hello Beaver' Happy Birthday pamphlet from Billy Butlin *£50 - £80*

155

A late 19th/early 20th century spirits flask, the glass phial with a metalwares mount in a tan leather case *£40 - £60*

156

A cigar box of collectables including two Bravington's Every Woman medallions, cigarette lighters, a clicker counter, a metalwares advertising pencil for Andrew's Liver Salt etc. *£40 - £60*

157

A late 18th/early 19th century brass adjustable dog collar, inscribed 'B.Lovett Esq.re Soulbury' *£80 - £120*

158

A collection of pens, nibs and related items including an 18ct gold nib, a pencil holder, inkwells, blotter etc. *£40 - £60*



159

A group of collectables including a Watston & Son brass lens, a French brass ashtray, binoculars, a set of Hughes scales, a money box in the form of a car, a Garnock Bibby & Co Ltd rabone rope gauge etc. *£100 - £150*

160

A group of collectable's including a silver plated RAF boxing plaque, a miniature of a girl in a red dress, a 19th century miniature watercolour, a copper engravers plate for the Townsend family crest etc. £30 - £40

161

Of Smoking Interest: a 1920's French Aquilon lighter, a group of Trench Art lighters, three pipes, a pair of ceramic ashtrays etc. £80 - £120

162

Of Smoking Interest: a beech pipe rack and a silver plated inkwell, together with a collection of fifty-five various pipes including five cased examples, one entitled 'A present from Yarmouth', a Meerschaum pipe modelled as a hand, a similar silver mounted pipe, a Meerschaum pipe modelled as a gentleman wearing a headdress, clay pipes etc. £200 - £300

Lot 162





Lot 163

163

Of Bridge/Gaming Interest: a cased set of four 1920/30's silver plated dishes, each set with an enamelled suit, together with a similar plated card holder, a set of four 1950's ashtrays, a cloisonne card box, a Trench Art ashtray with suit markers, a brass and copper globe etc.
£100 - £150

165

A group of five late 20th/early 21st century Greek reproduction Byzantine icons including two .950 silver, two silver plated and a hand-painted example
£80 - £120

166

An Inuit water dipper
£20 - £30

167

A group of moulded glass scent bottles modelled as a racing car, a pistol, a frog etc. together with a blue and red slipper and a ceramic box and cover decorated with an erotic scene
£30 - £50

164

A 19th century German vesta holder, stamped Zimmermann in Hanau, a cased 19th century Austrian Meerschaum pipe end by Albin Klitsch and a cased figural Meerschaum pipe
£50 - £80



Lot xx



168

A cased French Patheorama viewer together with a group of ephemera and miniature flags relating to the 1931 and 1937 Paris Exposition Internationale
£50 - £80

Lot 165



169

A 19th century German symphonium disc music box by Schutz-Marke in an oak case, No. 270795, h. 46 cm, together with a group of thirty-three discs *£150 - £200*

170

A group of five 1950's crocodile skin bags in tan, black and burgandy *£60 - £100*

171

A 19th century German Globe 'Vulcan' oil lamp with a brass reservoir and a cranberry glass shade, h. 50 cm *£60 - £100*

172

A pair of Victorian copper lanterns, each with two glazed curved panels and the wrought iron wall brackets, h. 103 cm each *£150 - £200*

173

A 19th century wall clock, the dial with Roman numerals, within a mahogany circular case, d. 26 cm *£30 - £50*



Lot 169

174

Two Bank of England white £5 notes, Peppiatt, 07213, 66370 *£100 - £150*

175

Two Bank of England £10 notes, John Page, together with two ten shilling notes and a £1 note, Peppiatt *£30 - £50*

176

A cased pair of Parker fountain pens with 14k gold nibs together with a Christian Dior pen and two pots of ink *£30 - £50*

177

A Victorian brass oil lamp with a cut glass reservoir and an etched glass shade, h. 66 cm *£60 - £100*

178

A 19th century pictorial and poetical needlework sampler by Martha Ashworth, aged 12 years 1845, 62 x 50 cm *£150 - £200*

179

A late 19th century Vienna Regulator-type wall clock in a walnut case, h. 113 cm *£60 - £80*



180

A 19th century pictorial sampler depicting Solomon's Temple by Isabella Graham, 40 x 49 cm *£60 - £80*



Lot 181

181

Kleyser & Co., Southwark: a Regency rosewood bracket clock, the double fusee movement striking on a bell, the enamelled face with Roman numerals and a convex glass cover, within a rosewood foliate case on bun feet, h. 50 cm *£500 - £800*



Lot 182

182

A Regency tortoise-shell tea caddy of serpentine form surmounted by a metalwares goat, on bun feet, h. 17 cm *£450 - £550*

183

A Victorian plaster plaque relief decorated with the incarnation stable interior, behind an oval convex glass cover within an ebonised frame, 40 x 32 cm *£50 - £80*



Lot 184

184

A 19th century French casket with a gilt oval body on bun feet, w. 16 cm *£50 - £80*



Lot 185

185

A 19th century French jewellery casket with a padded interior on scrolled legs, stamped Depose N. 46, w. 11 cm *£50 - £80*



Lot 186

186

A 19th century French mantle clock, the movement stamped 30289, the face with Roman numerals, within a gilt metal figural case surmounted by a seated Spanish lady, h. 46 cm
£300 - £400

187

A French gilt metal five glass cased barograph, w. 30.5 cm
£80 - £120

188

A novelty cast metal money box in the form of a safe, h. 11 cm
£20 - £30

189 - 200

Spare lots



Lot 188

the
café

AT

W&H PEACOCK

AUCTIONEERS & VALUERS

Eastcotts Park, Wallis Way,
Bedford, Bedfordshire
MK42 0PE

Visit
www.peacocksafe.co.uk
for more details and to view
our current menu.

01234 266 366




View the salerooms for our upcoming auctions and then relax with a coffee and a slice of cake.

Our unique café in Bedford Auction Centre with free wi-fi and views of the salerooms, comfortably seats over 100 customers.

We serve cooked breakfasts, paninis and sandwiches, light lunches and snacks plus a range of hot and cold drinks.

Open Monday to Thursday from 8.30am - 3.30pm
 Extended opening on Friday to 7pm. Saturday 8.30am - 4pm
 (Last orders 1 hour before closing)

W&H PEACOCK

AUCTIONEERS & VALUERS

Established 1901

Auction Centre & Café

OPEN TO THE PUBLIC SIX DAYS A WEEK



The Auction Centre provides five spacious auction rooms, reception area, offices, meeting rooms, gallery display areas and a fully serviced restaurant, open six days a week. To further enhance the customer experience the Auction Centre has wifi and modern audio visual systems, over 200 parking spaces, excellent loading facilities and is set in landscaped surroundings.

Bedford Auction Centre Eastcotts Park, Wallis Way, Bedford, MK42 0PE
01234 266 366 or info@peacockauction.co.uk

peacockauction.co.uk

Painting & Prints



Paintings & Prints

201

Stanley Orchard
(1920-2005), 'A Scottish Hamlet', signed with a monogram, sanguine pencil, 20.5 x 32 cm £40 - £60



202

P. B.. (20th century), 'Jane', signed with initials and dated 20.7.74, coloured pastels, 6 x 42 cm £30 - £40

203

English School, 18th century, An interior study of a temple, inscribed in pencil and dated 1785, monochrome watercolour, 31 x 48.5 cm

£50 - £80

204

H.L. (Irish School), 'Och thin, may the divil [sic] take ye, for a dirty Protestant', signed with initials, ink drawing, 17 x 11 cm, together with either others in the same series (9)

£60 - £80

205

Attributed to Constance Hugh Smith (1845-1918), A view of Monaco, unsigned, monochrome watercolour, 13 x 21.5 cm, together with four other works by the same hand (5)

£80 - £120

206

George Lane (c. 1900-1970), 'Too Drastic', signed with initials, pen and ink illustration, 9.5 x 10 cm, together with eleven others by the same hand, various sizes (12)

£80 - £120

Lot 201

207

Attributed to H.. G.. Moore, A group of eighteen pen and ink and pencil drawing of maritime subject matters, largest 22.5 x 34.5 cm (18)

£40 - £60

208

Robert Lyon (exh. from 1935), A collection nine 1940's pencil portrait sketches depicting military figures, signed, various sizes, together with eleven further works possibly by the same hand (20)

£80 - £120





Lot 207 (part)

209

A mixed group of 19th century and later watercolours, pencil drawings, engravings, book plates and other loose pictures, various subject matters and sizes (qty) £50 - £80

210

English School, 19th century, A grand military procession, unsigned, pencil, 17.5 x 29 cm

£40 - £60

211

Attributed to Alfred Edward Chalon RA (1780-1860), 'Lady Charlotte Watson', unsigned but inscribed below, watercolour, oval 32.5 x 25 cm

£80 - £120



Lot 211

212

A parcel of 19th century and later drawings and engravings, various subject matters and sizes (qty) £40 - £60

213

Attributed to Hugh McKenzie, A group of ten life studies, unsigned, various medium and sizes (10)

£20 - £30

214

J.. M.. Austin,
Norwich Castle,
signed,
watercolour,
5 x 7.5 cm, together with another work by
the same hand and a watercolour sketch of
a female beauty examining the contents of a
jewellery casket (3) *£30 - £40*

215

Louis Chappell (American 19th/20th century),
A landscape with cattle by a rustic bridge,
signed and dated '82,
watercolour,
44 x 64 cm, and another by the same hand, a
pair (2) *£100 - £150*



Lot 216

216

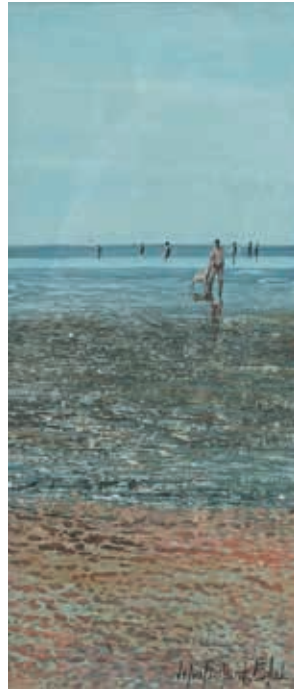
Ethelene Eva Dell (fl. 1885-1925),
'The New Arrival',
signed,
watercolour,
14 x 17 cm *£60 - £80*

217

Sir Hugh Casson (1910-1999),
'Gov Building, Singapore'
signed with initials and inscribed,
watercolour,
11.5 x 9.5 cm *£80 - £120*

218

English School (Contemporary),
'Heacham, Norfolk',
indistinctly signed,
gouache,
34.5 x 14.5 cm *£20 - £30*



Lot 218



Lot 219

219

John William Bramham RA (1937-1962),
'Storrington, West Sussex',
signed,
watercolour,
27 x 37 cm *£20 - £30*

220

Stephen John Batchelder
(1849-1932), Ranworth
Church,
signed,
watercolour,
19 x 32.5 cm £150 - £200



Lot 220

221

English School, late 19th/
early 20th century,
A study of a church on an
autumnal day, unsigned,
watercolour,
22 x 29 cm £30 - £50



Lot 222

222

Arthur Gerald Ackerman (1876-1960),
'Malden Creck',
signed,
watercolour,
24 x 36.5 cm



Lot 224

£80 - £120

223

Philip Gibson (Moorcroft artist),
A study for the 'Trout' pattern,
watercolour,
signed, 20 x 40 cm £80 - £120



Lot 223

224

Maureen Ratel (20th century),
'Motherhood',
signed,
pencil sketch,
43 x 33 cm £20 - £30

225

Henry Bird (1909-2000),
a life study of a nude,
signed,
pencil drawing,
17 x 53 cm

£50 - £80

230

..Howard (19th century),
Wild horses startled by a collie,
signed and dated 1883,
watercolour,
33 x 70 cm

£150 - £200

226

Spare Lot



Lot 227

227

Stanley Orchart (1920-2005),
Burnsall, Yorkshire,
signed,
watercolour,
35 x 46.5 cm

£60 - £100

228

Stanley Orchart (1920-2005),
'The Porch, St Neots Church'
signed,
watercolour,
25 x 35.5 cm

£60 - £100

229

Simon Jones (20th Century),
'Albert Memorial',
signed and dated '87,
watercolour,
56 x 36 cm

£20 - £30

231

Penelope M.. Goodman (nee
Everett),
A sketchbook containing a
collection of early 20th century
pencil sketches, album measures
23 x 17 cm

£30 - £40

232

Tom Rowden (1842-1926),
Resting cows on a coastline,
signed and dated '93,
watercolour,
36.5 x 65 cm

£200 - £250

233

G.. H.. Hutchinson (20th Century),
Bamburgh Castle,
signed,
watercolour,
17 x 25 cm, together with two
other loose watercolours of
castles (3)

£50 - £80



Lot 228



Lot 230



Lot 232

234

John T.. Fouracre (exh. 1896-1905),
A study of a lady walking down a country
lane, signed,
watercolour,
25 x 18 cm

£50 - £80

236

Joseph Pighills (1902-1984),
A view on the Pennine Way,
signed,
watercolour,
29 x 44 cm

£80 - £120

235

Late 19th/early 20th Century School,
A study of a country house and park,
unsigned,
watercolour,
17 x 26.5 cm

£60 - £100

237 - 240

Spare lots



Lot 241



Lot 242

241

Attributed to
Carolus Ludovicus Weyts (Belgian, 1828-1876),
'Spray of Maldon, Capt. Wm. Carter Passing
Flushing 1860',
unsigned but attribution to the mount,
reverse painted on glass,
71 x 55 cm

£600 - £800

242

Manner of Jan Steen,
A musical party,
unsigned,
oil on panel,
39 x 28.5 cm *see Lot 289 Sotheby's 13th
September 1995

£250 - £300

243

19th Century School,
A woman at prayer,
unsigned,
oil on panel,
37 x 29 cm

£120 - £150



Lot 244

244

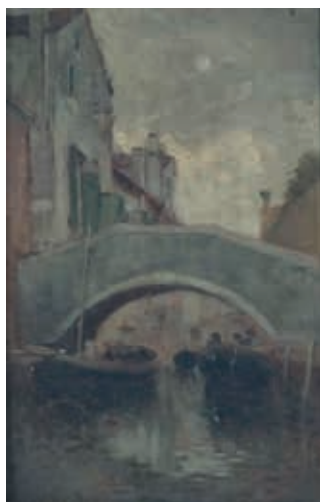
William George Meadows (1825-1901),
Cattle in a shed,
signed W.G. Meadows,
oil on canvas,
35 x 44 cm,
together with another by the same hand
depicting sheep, a pair (2) *£400 - £600*

245

E.. Matthews (20th century),
St Albans Cathedral,
signed,
oil on board,
25 x 34 cm *£40 - £60*

246

Claire Spencer R.B.S.A. (b. 1937),
A landscape,
signed,
pastels,
22 x 24 cm *£50 - £80*



Lot 247

247

Attributed to William Heath Wilson (1849-1927),
'Venice October 1887',
unsigned,
attributed,
titled and dated verso,
oil on board, 19 x 11 cm *£100 - £150*

248 - 250

Spare lots

251

'Madam Butterfly Puccini': operatic poster,
English National Opera, together with another
poster 'The 27th Edition of It's Magic', a Royal
Academy exhibition poster and a Chinese poster
£50 - £80

252

Early 20th Century,
A couple standing in wedding attire,
black and white photograph,
within a gilt metal frame of castellated form, in a
mahogany and glazed presentation case, 56 x
51 cm overall *£60 - £80*

253

Francesco Bartolozzi R.A.
after Annibale Carracci,
'Clytie',
engraving, 53 x 47 cm *£40 - £60*

254

After Jean Honore Fragonard (1732-1806),
'Roman D'Amour De La Jeunesse',
engraving,
70 x 48 cm, together with another after the
same hand, a pair (2) *£100 - £150*

255

Spare lot

256

Charles Bird (b. 1856),
'St Mary Redcliffe, Bristol',
engraving,
70 x 45 cm, together with twelve loose coloured
engravings including six depicting gentleman's
seats by Kip and others, Staunton Harold,
Boughton, Tankersley Park, Maugersbury,
Hamstead Marshall and Maddingley *£80 - £120*

257

..Christie (20th Century),
'Low Tide',
signed,
aquatint,
15 x 22 cm, together with an etching depicting
hay bales at a farmyard (2) *£50 - £80*

258

19th Century School,
A Continental townscape with cathedral,
monogrammed and dated 1883,
etching,
28 x 18 cm *£30 - £40*

259

Baron Philippe de Rothschild,
'Chateau Mouton Rothschild 1983 Pauillac',
a lithographic wine label poster printed in
colours, 33 x 24 cm, together with another work
in the same manner (2) *£60 - £100*

260

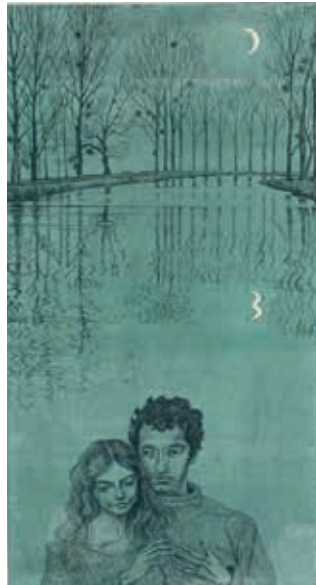
Brigid Marlin (American, contemporary),
'The Lovers',
signed in pencil and dated '74,
artists' proof etching,
40 x 25 cm *£40 - £60*

261

Late 19th Century,
The Defence of the Mission Station at Rorke's
Drift, Natal, January 1879, lithographic print in
colour, 54 x 44 cm *£40 - £60*

262 - 300

Spare lots



Lot 260



Lot 261

*Glass, Ceramics,
Silver and Coins*



Glass, Ceramics, Silver and Coins

301

A near pair of Continental porcelain oil lamps both modelled as three putti supporting a canework basket (2) £60 - £100

302

A 19th century majolica serving plate relief decorated with stylised asparagus, d. 25 cm £30 - £40

303

A Doulton Lambeth stoneware water jug decorated with the motto 'Straight is the Line of Duty...', h. 20 cm, together with a similar Royal Doulton jug 'For every ill...' (2) £60 - £100

304

A pair of Doulton Lambeth vases of baluster form relief decorated with stylised flowerheads on a mottled green ground, h. 15.5 cm £40 - £60



Lot 303

306

A studio pottery figure modelled as standing cow, h. 12.5 cm (af) £20 - £30

307

A Moorcroft miniature vase of slender baluster form, decorated with stylised flowerheads on a shaded green ground, Queen Mary label to base, h. 10 cm £50 - £80



Lot 307

308

A Sunderland lustre two handled novelty chamber pot internally decorated with a frog and reading 'Use me well, keep me clean, I will not tell, what I have seen' and two further verses to the exterior, w. 29 cm £100 - £150



305

A Martin Brothers terracotta bellarmine jug decorated in a plain treacle glaze, inscribed to base, h. 20 cm £300 - £400



Lot 308



Lot 309

309

A Lalique 'Coquilles' pattern clear and opalescent glass side plate, etched signature 'R LALIQUE', d. 16.5 cm *£60 - £100*



310

A Wade figure modelled as a female beauty wearing a black, red and gold dress and holding a bouquet of flowers, h. 22 cm *£30 - £50*

311

A Moorcroft shallow dish of circular form, decorated with orchids on a mottled blue ground, Queen Mary label to base, d. 21.5 cm *£60 - £100*

312

Three Royal Crown Derby paperweights each modelled as an owl, max h. 7.5 cm *£60 - £100*

313

Four Royal Crown Derby paperweights each modelled as bird including a firecrest, a garden blue tit, a robin and one other, max h. 7 cm *£60 - £100*

314

Four Royal Crown Derby paperweights each modelled as a bird including a Jenny wren, a crested tit and two others, max h. 6.5 cm *£60 - £100*

315

Two Royal Crown Derby paperweights modelled as a meerkat and a bunny, max h. 13 cm *£60 - £100*

316

Five Royal Crown Derby paperweights each modelled as a duck including a Baikal teal, an teal duckling, a duckling and two others, max h. 7 cm *£80 - £120*

317

A majolica tray of trefoil form decorated in a canework pattern, w. 30.5 cm, together with a matching water jug, a 19th century two handled motto cup, a chinoiserie tea cup and saucer and an olivewood barrel shaped container (qty) *£40 - £60*

318

An early/mid 20th century moulded frosted glass lamp base modelled as a female beauty, h. 18 cm *£20 - £30*



319

A Cantagalli miniature vase of globular form, the body typically decorated with the Medici crest above three claw feet, h. 13.5 cm (af) *£30 - £40*

Lot 319

320

Doulton Burslem for J. J. Royle, a 'Self Pouring' teapot, h. 21.5 cm, together with a stoneware vase decorated with stylised flowers in a plain mustard glaze (2) £40 - £60

321

Clarice Cliff for Wilkinson, a 'Bizarre' range vase of fluted form decorated in the 'My Garden' pattern, h. 18 cm £40 - £60

322

A Royal majolica jardiniere and stand decorated in the rococo manner in shades of blue, pink and green, h. 122 cm (af) £40 - £60

323

A Burmantofts jardiniere stand relief decorated with symbols from the British Isles on a treacle ground, h. 78.5 cm £30 - £50



324

A pair of Minton Hollins & Co. tiles relief decorated with hunting scenes in a kingfisher blue glaze, 20.5 x 20.5 cm, together with a single tile decorated with a gentleman reading in a mustard glaze and four Italian tiles (7) £60 - £80

325

A pair of Royal Doulton vases of baluster form decorated in the 'lace' pattern with stylised flowerheads on a shaded blue ground, h. 38.5 cm £80 - £120

326

A majolica three section basket of shell form, w. 28.5 cm £30 - £40

327

A Royal Doulton bowl of circular form transfer printed in the Egyptian manner, d. 26 cm £30 - £50

Lot 323



Lot 328

328

A 19th century charger of circular form decorated by Charlotte Horne Spiers with flowering chrysanthemum in autumnal hues, signed, d. 38 cm, also signed and dated 1881 verso £200 - £300

329

A pair of Aesthetic Movement moon flasks decorated with butterflies and foxgloves on a kingfisher blue ground, h. 30 cm £80 - £120

330

A Royal Doulton figure 'Cobbler', Model No. HN1706, h. 20 cm £40 - £60



Lot 329

331

Spare lot

332

A Sevres charger decorated with portraits of Louis XIV and his court women within a gilded Sevres blue ground, verso detailing each of the sitters and housed within a later hexagonal stand on casters, overall w. 70 cm £400 - £600



Lot 332

333

A French metal mounted ceramic casket of shell form decorated in shades of green, w. 11 cm £20 - £30

334

A pair of early 20th century two handled vases of ovoid form decorated with floral sprays, h. 33 cm £30 - £40

335 - 350

Spare lots

351

An early 20th century silver cream jug of typical form with c-scroll handle on three paw feet, Birmingham 1922, h. 9 cm, 1.5 ozs £20 - £30

352

An early 20th century silver sugar sifter of urn shaped form, William Neale & Sons Ltd, Birmingham 1926, h. 16.5 cm, 2.5 ozs £30 - £40



Lot 352



Lot 355

353

An Anglo Indian metalware covered dish repousse decorated with foliate motifs, h. 10.5 cm £80 - £120

354

A pair of late Victorian silver spill vases of fluted form repousse decorated with c-scrolls and flowerheads, maker HA, Sheffield 1899, h. 19 cm, 8 ozs £50 - £80

355

A pair of late Victorian silver mounted cut glass dressing table bottles of spherical form, the hinged covers repousse decorated with c-scrolls and flowerheads, London 1897, h. 13.5 cm £80 - £120



Lot 353



Lot 356

356

A silver teapot, the eagle finial above a rococo decorated body with leaf capped c-scroll handle and masqued beak spout on an openwork base, Martin, Hall & Co., Sheffield 1902, 24 ozs
£300 - £400

359

A Victorian silver three piece bachelors tea service of barrel shaped form engraved in the Neo-Classical manner, Rupert Favell, London 1884, 15 ozs
£200 - £300



Lot 360

360

An early 20th century silver, parcel gilt and engine turned cigarette box of rectangular form, William Osborn, Birmingham 1926, w. 16.5 cm
£50 - £80

361

A silver engine turned cigarette box of rectangular form, maker JP, Birmingham 1955, w. 14 cm, together with a further silver cigarette case and a miniature silver bottle (3) £60 - £100



Lot 357

357

A silver ring box of circular form, the cover repousse decorated with c-scrolls and birds, maker B&Co., Birmingham 1973, d. 8.5 cm £30 - £40

362

A Victorian silver and parcel gilt four piece tea service of globular form, the tea and coffee pots each with a figural finial above bodies engraved in the foliate manner, Elkington Co., Birmingham 1880, 80 ozs
£700 - £800

358

A silver mounted cut glass sugar sifter, maker L Ltd., Birmingham 1934, h. 18.5 cm
£20 - £30



Lot 359

363

A pair of Edwardian pierced silver spill vases of flared form, Sheffield 1910, h. 16 cm, loaded

£20 - £30



Lot 362

364

An early 20th century silver mesh link purse, maker HS, import mark for Chester 1916, w. 15.5 cm, 7.5 ozs

£60 - £100

365

A pair of early 20th century silver butter dishes of shell form, maker JD WD, Sheffield 1915, w. 12 cm, 3 ozs

£30 - £50

366

A mixed parcel of silver comprising a cushioned card case of rectangular form, a pair of sugar nips, a fiddle pattern salt spoon, a silver handled button hook and two pairs of silver handled glove stretchers, various dates and makers (6)

£60 - £100



Lot 363

367

A silver and enamelled brooch modelled as a pair of prancing antelope, w. 3.8 cm, a cased set of six dress buttons and a rolled gold ladies wristwatch

£20 - £30

368

A silver 'mother and child' bobbin, London 1978, l. 9 cm and two further silver lace bobbins (3)

£50 - £80

369

A set of four late Victorian silver salts of squat bun shaped form, maker WG JL, Sheffield 1897, 2.5 ozs

£40 - £60

370

A silver child's teething rattle, Crisford & Norris Ltd., Birmingham 1949, l. 15.5 cm, together with a silver pin dish of circular form (2) £30 - £40



Lot 369

All estimates exclude buyer's premium of 21% including VAT which is payable in addition

 @WHPeacock  /WHPeacockAuctioneers



Lot 372

374

A silver, parcel gilt and engine turned cigarette case of rectangular form, maker WHM, Birmingham 1953, l. 12.5 cm, together with a similar silver case, overall 11 ozs (2) £100 - £150

375

A silver and engine turned cigarette case of cushioned rectangular form, maker RN, Birmingham 1945, w. 10 cm, together with a similar silver cigarette case, overall 8 ozs (2) £60 - £80

376

A mixed parcel of Georgian and later fiddle and other pattern spoons, 15.5 ozs, together with a silver and parcel gilt cheroot holder, a silver vesta case and chain and two silver mounted dressing table containers, various dates and makers (qty) £150 - £200

377

A silver cased full hunter pocket watch, a silver cased open face pocket watch and two silver cased fob watches (4) £60 - £100

378

An Edwardian silver card case repousse decorated with a courting couple seated on a swing, maker HM, Birmingham 1900, l. 8 cm, currently housing a set of card dominoes, together with a cased silver mounted cheroot (2) £40 - £60



371

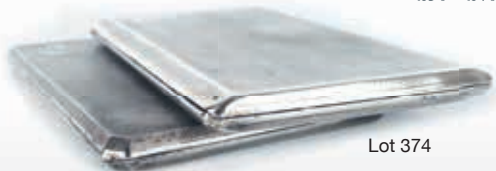
An early 20th century Tiffany & Co. silver hand mirror of circular form with ropetwist border and finger loop, with green pouch £30 - £40

372

A set of twelve Norwegian silver and guilloché enamelled teaspoons, each decorated in a different colour and contained in a fitted case £120 - £150

373

Two pairs of early 20th century silver backed oval brushes, various dates and makers (4) £30 - £40



Lot 374



Lot 378

379

A 9ct yellow gold bracelet, 7.1 gms, together with a metalware bracelet, three brooches, a locket and a button (7) *£60 - £100*

380

An Edwardian silver photograph frame repousse decorated in the rococo manner, Birmingham 1903, h. 22.5 cm, together with a further photograph frame of similar design (2) *£40 - £60*



Lot 381



Lot 380

381

A late Victorian pierced silver basket of oval form decorated in the rococo manner, maker TL, Sheffield 1897, w. 30.5 cm, 15 ozs *£150 - £200*

382

A presentation stand displaying a suite of George IV silver gilt Kings pattern flatware comprising: 3 x cream ladles, 2 x sifting spoons, 2 x serving spoons, Williams Eley I and William Fearn, London 1822, 23 ozs *£180 - £220*

383

A 19th century Continental metalware straining spoon with c-scroll and putti decoration, l. 15.5 cm *a handwritten note by the original owner (included) states that the item was given to a family member by Princess Mathilde niece of Napoleon I *£50 - £80*

384

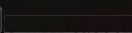
A group of Victorian silver Hanoverian pattern flatware comprising: 1 x gravy spoon, 6 x table spoons, 6 x table forks, 6 x dessert spoons and 6 x dessert forks, Benjamin Smith, London 1847, 54 ozs *£500 - £600*

385

United States Presidential Dollars: a collection of 24ct gold plated coins in a fitted mahogany case including thirty-nine unopened rolls of twelve, forty other coins and five commemorative coins relating to living presidents, with associated c.o.a. *£600 - £800*



Lot 385





Lot 386

386

A complete cased set of fifty-one Danbury Mint Sacagawea Dollars
£500 - £700

389

A late 19th/early 20th century silver plated butter dish of shell shaped form on a stylised dolphin stand, h. 11 cm, together with a plated goblet of flowerhead design, a Mappin & Webb coffee pot, a vase mounted with a pair of cherubs and a part communion glass stand
£60 - £100



387

An early 20th century silver plated galleried tray of circular form on six claw feet, Viners, d. 57 cm
£60 - £100

390

A silver mounted cut glass fruit bowl, maker H&H, Birmingham 1911, d. 23 cm, together with a pair of cut glass decanters (3)
£40 - £60

391

An early 20th century silver mounted mantel timepiece of Neo-classical design, Birmingham 1911, h. 13 cm
£40 - £60

392

A modern silver mounted bedside timepiece in a faux malachite case of architectural form, Carrs, Sheffield 1997, h. 9 cm
£30 - £40



Lot 391

388

A small group of silver plated items including a two handled tray, a pair of serving tongs, a three branch candelabrum and other items (qty)
£60 - £80

393 - 400

Spare lots

401

A Victorian sovereign, dated 1878 *£180 - £220*



Lot 401

411

A Magnificent Seven Coin Collection gold 1/4 oz Chinese Panda coin, dated 2006

£180 - £220



Lot 411



Lot 402

402

A Victorian sovereign, dated 1899

£180 - £220



Lot 412

412

An Elizabeth II Australian gold 1/4 oz 25 dollars coin, dated 2005

£180 - £220

403

An Edwardian sovereign, dated 1903 *£180 - £220*



Lot 405

413

An Elizabeth II Canadian gold 1/4 oz ten dollars coin, dated 2003 *£180 - £220*

404

A sovereign, dated 1912 *£180 - £220*

405

A sovereign, dated 1926, Pretoria Mint *£180 - £220*



Lot 407

414

A 1/4 krugerrand, dated 2005 *£180 - £220*

406

A sovereign, dated 1968 *£180 - £220*

407

A sovereign, dated 2006 *£180 - £220*



Lot 415



Lot 409

408

An Edwardian half sovereign, dated 1906 *£80 - £120*

409

A Magnificent Seven Coin Collection gold Mexican 1/4 oz coin, dated 2004 *£180 - £220*

410

A Magnificent Seven Coin Collection gold American 1/4 oz ten dollar coin, dated 2003 *£180 - £220*

415

The World's Finest Miniature Collection, a group of six gold coins comprising: 2004 Nelson Mandela, 2003 Queen Mary I, 2003 Richard II, 2007 George Washington, 2003 Elizabeth I, 2008 Giant Panda *£120 - £150*

416

A group of seven gold coins comprising: 2007 Centenary of Scouting, 2005 Bounty Bible five dollars, 2005 Taj Mahal, 2005 Australian nugget 1/25 oz, 2006 Lost Dutchmen Mine, 2006 Sidney Opera House, 2006 Henry VIII

£120 - £150

417

A group of seven gold coins comprising: 2006 50th Birthday QEII, 2005 M.Theresa 50 shillings, 2006 Mongolian National Opera, 2006 Russian ballerina, 2003 Richard II, 2006 Isanbard Kingdom Brunel, 2006 Christopher Columbus

£140 - £160

418

A cased replica oversized 1933 twenty dollar Double Eagle coin

£20 - £30

419

A cased pair of one rupee coins, dated 1901 and 1913

£20 - £30



Lot 416

420

A group of fourteen silver proof commemorative coins relating to the British Monarchy

£100 - £150

421

A group of seven silver proof coins from the Monarch's Silver Coin Collection

£60 - £80

422

A group of six Millionaires Collection silver and silver gilt proof coins

£40 - £60

423

A group of eight silver proof collectable coins including a DNA Double Helix two pound coin and others

£40 - £60

424 - 600

Spare lots



Lot 421

Next Antique Furniture & Collectors' Items Auction

Friday 2nd November 2018 - Bedford Auction Centre

W&H PEACOCK
AUCTIONEERS & VALUERS

TO BE SOLD BY AUCTION

Saturday 17th November
Mid Century Design

Commencing at 10.30am



This is a specialist sale of Mid Century classic designed furniture and collectables. These auctions have proved to be very popular with specialist buyers and private individuals looking for something out of the ordinary to furnish their home.

Viewing: Friday 16th November 9am to 8pm and morning of sale from 9am

AUCTION ENTRIES INVITED

Bedford Auction Centre

Eastcotts Park, Wallis Way, Bedford, Bedfordshire MK42 0PE
01234 266 366 or design@peacockauction.co.uk

peacockauction.co.uk

W&H PEACOCK
AUCTIONEERS & VALUERS

TO BE SOLD BY AUCTION

Friday 7th December
Jewellery & Watches

Commencing at 4pm



To include a range of antique & modern watches, rings, sovereigns, bracelets, brooches, pendants and necklaces, etc.

Friday 30th November – 9am to 8pm,
Saturday 1st December – 9am to 4pm,
Thursday 6th December – 9am to 6pm,
Morning of sale from 9am

AUCTION ENTRIES INVITED

Bedford Auction Centre
Eastcotts Park, Wallis Way, Bedford, Bedfordshire MK42 0PE
01234 266 366 or jewellery@peacockauction.co.uk

peacockauction.co.uk

W&H PEACOCK
AUCTIONEERS & VALUERS

TO BE SOLD BY AUCTION

Thursday 13th December
Sporting Guns, & Antique Arms

Commencing at 10.30am



Lot 729: .303 Vickers heavy machine gun, on tripod stand with belt, belt box, green wooden case with rope handles and webbing covers, no. 6334 - Deactivated with EU certificate
Estimate £1500 - £2000

Sold in our September Sale
Hammer Price £4,400 *excluding BP

Bedford Auction Centre
Eastcotts Park, Wallis Way, Bedford, Bedfordshire MK42 0PE
01234 266 366 or guns@peacockauction.co.uk

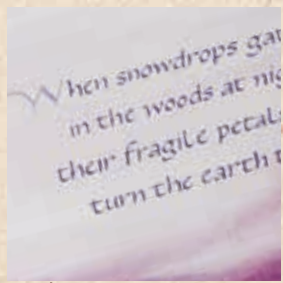
peacockauction.co.uk

LIMITED PLACES
BOOK NOW!

Craft

WORKSHOPS

AT **W&H PEACOCK**
AUCTIONEERS & VALUERS



Calligraphy

Wednesday 10th October

9.30am-12.30pm £20 per person Tutor: Julie Kent

Eastcotts Park, Wallis Way, Bedford MK42 0PE

01234 266 366 www.peacockauction.co.uk

*Cost includes all materials needed, tea/coffee and cake

To book your place on this half-day workshop, please contact
Julie on jewelsart@sky.com or call 07745 168107

Vintage & Collectable Toys



Vintage & Collectable Toys

PLEASE NOTE: The toys will be sold immediately after Lot No. 423

601

A limited edition fully jointed Steiff 'British Collector's 1908' bear, No. 01752/3000, with box and certificate *£50 - £80*

602

A limited edition fully jointed Steiff 'British Collector's 1997' bear, No. 02267/3000, with box and certificate *£50 - £80*



Lot 603

603

A limited edition fully jointed Steiff 'British Collector's 1998' bear, No. 01879/3000, with box and certificate *£50 - £80*

604

A limited edition fully jointed Steiff 'British Collector's 2003' bear, No. 00764/4000, with box and certificate *£30 - £40*



Lot 605

605

A limited edition fully jointed Steiff 'British Collector's 2007' bear, No. 02989/3000, with box and certificate *£30 - £40*

606

A limited edition fully jointed Steiff 'Krystina The Swarovski' bear, No. 00369, with box and certificate *£50 - £80*

607

A limited edition fully jointed Steiff 'Juliet' bear, No. 00024, with box and certificate *£30 - £40*

608

A limited edition fully jointed Steiff 'Joshua' bear, No. 00331/5000, with box and certificate *£40 - £60*



Lot 608

609

A limited edition fully jointed Steiff 'George-The Royal Baby' bear, No. 01252, with box and certificate *£30 - £40*

610

A limited edition fully jointed Steiff 'The Cub Scout Centenary' bear, No. 00611, with box and certificate *£30 - £40*

611

A limited edition fully jointed Steiff 'The Growler' bear, No. 00014, with box and certificate *£30 - £40*

612

A limited edition fully jointed Steiff 'The House of Windsor Centenary' bear, No. 00156/1917, with box and certificate *£30 - £40*

613

A limited edition fully jointed Steiff 'Diamond Jubilee' bear, No. 00582, with box and certificate *£30 - £40*

614

A limited edition fully jointed Steiff 'Memories' bear, No. 00608/5000, with box and certificate
£30 - £40



Lot 615

615

A limited edition fully jointed Steiff 'William' bear, No. 00354, with box and certificate
£30 - £40

616

A limited edition fully jointed Steiff 'Bertie' silk bear, No. 00314, with bag and certificate
£30 - £40

617

A limited edition fully jointed Steiff 'Catherine' bear, No. 00368
£30 - £40

618

A fully jointed Steiff 'Always in my Heart' bear, with certificate
£30 - £40

619

A limited edition fully jointed Steiff 'Angus The Scottish' bear, No. 00241, with certificate
£30 - £40

620

A fully jointed Steiff bear commemorating Queen Elizabeth II's 80th birthday
£30 - £40

621

A miniature Steiff bear modelled as a baby bear, h. 12 cm, together with a Steiff stuffed deer (2)
£30 - £40

622

Four Barbie, Sindy and other dolls and a small group of clothing
£30 - £40



Lot 623

623

An early 20th century fully jointed Steiff bear having black boot button eyes and button to ear, l. 31 cm
£100 - £150

624

A Molly Brett nursery print depicting animals in a mystical woodland, 44 x 53 cm, together with a Wedgwood Peter Rabbit nursery set, boxed (2)
£20 - £30

625

A Japanese bisque headed doll with sleeping blue glass eyes and open mouth showing two upper teeth, head stamped 'M&B Japan', l. 45 cm
£40 - £60

626

A Rosebud fully jointed hard plastic doll, l. 37 cm, together with an early 20th century composition doll, larger (2)
£20 - £30

627

A Heubach Koppelsdorf bisque headed doll with sleeping blue glass eyes and open mouth showing two upper teeth, l. 27.5 cm
£20 - £30

628

An Armand Marseille bisque headed doll with fixed brown glass eyes and open mouth, head stamped '390', l. 42 cm
£20 - £30

629

An International Model Aircraft (Lines Bros) stuffed push along terrier, h. 52 cm
£30 - £40

630

A Pelham Puppet 'Noddy', plain card box
£20 - £30

631

A pair of carved and painted wooden figures, each modelled as a mounted huntsman, max h. 17 cm
£20 - £30



Lot 635

632

Two moulded plastic clockwork figures modelled as Mickey Mouse and Popeye, together with a rubber figure modelled as Sylvester, max h. 21 cm (3)
£40 - £60

633

A Schutzmeister & Quendt bisque headed doll with sleeping brown glass eyes and open mouth showing two upper teeth, head stamped '201, h. 51.5 cm
£40 - £60



Lot 636

634

A mixed group of dolls including Sindy, Patch, Dawn and Tressy, together with a group of clothing and accessories *£60 - £100*

635

An Aberdale Cycle Co. 'Gresham Flyer' Super De Luxe child's tricycle *£100 - £150*

636

A plastic scale model ship modelled as the 'Gry Maritha' in a fitted case, case measures w. 114 cm *£60 - £100*

637 - 650

Spare Lots



Lot 656

656

A Britains Soldiers 'Regiments of All Nations' set - No. 142 Zouaves (Charging) *£30 - £50*

657

A Britains Soldiers 'Regiments of All Nations' set - No. 1619 Royal Marines *£30 - £50*

658

A Britains Soldiers 'Regiments of All Nations' set - No. 2017 Ski Troops *£60 - £100*



Lot 651

651

A Britains Soldiers 'Regiments of All Nations' set - No. 2 Royal Horse Guards *£30 - £50*

652

A Britains Soldiers 'Regiments of All Nations' set - No. 47 Skinner's Horse *£30 - £50*

653

A Britains Soldiers 'Regiments of All Nations' set - No. 201 General Staff Officers *£30 - £50*

654

A Britains Soldiers 'Regiments of All Nations' set - No. 1633 Princess Patricia's Canadian Light Infantry *£50 - £80*

655

A Britains Soldiers 'Regiments of All Nations' set - No. 228 US Marines at Slope *£40 - £60*

659

A Britains Soldiers 'Regiments of All Nations' set - No. 1901 The Cape Town Highlanders *£30 - £50*

660

A Britains 'British Soldiers' set - British Infantry *£30 - £50*

661

A Britains 'British Soldiers' set - No. 120 The Coldstream Guards (Firing/Kneeling) *£30 - £50*



Lot 658

All estimates exclude buyer's premium of 21% including VAT which is payable in addition

 @WHPeacock  /WHPeacockAuctioneers

662

A Britains 'British Soldiers' set - No. 157
The Gordon Highlanders £40 - £60

663

A Britains 'British Soldiers' set - No. 75
Scots Guards £30 - £50

664

A Britains 'British Soldiers' set - No. 194
Machine Gun Section £30 - £50

665

A Britains 'British Soldiers' set - No. 16 The
Bufs East Kent Regiment £30 - £50

666

A Britains 'Armies of the World' set - No. 1900
Regiment Louw Wepener £60 - £100

667

A Britains 'Soldiers in Action' set - Gas Mask
Men (Crawling) £30 - £50

668

A Britains 'Soldiers in Action' set - No. 1613
Gas Mask Men (Charging) £30 - £50

669

A Britains 'Foreign Legion' set - No. 1711
French Army £50 - £80

670

A Britains British Sailors 'Types of the Royal
Navy' set - No. 78 Bluejackets £30 - £50

671

A Britains 'British Soldiers' set - No. 8 4th
(Queen's Own) Hussars £30 - £50



Lot 672

672

A Britains 'Types of the Indian Army' set - No.
123 The Bikanir Camel Corps £50 - £80

673

A Britains 'Royal Engineers' set - No. 203
Pontoon Section £80 - £120

674

A Crescent Toys No. 1521 Cowboy set £30 - £50

675

A Britains Farm No. 5F farm wagon, boxed
£30 - £50

676

A Crescent Toys farm animals set, boxed
£30 - £50

677

A Taylor & Barrett part 'Chimpanzee Tea Party'
set £30 - £50



Lot 662



Lot 678

678

A Britains 'Snow White and the Seven Dwarfs' set No. 578B £30 - £50

679

A Johilco 'Wedding Party' set including a bridesmaid wearing a blue dress £30 - £50

680

A small group of Britains 'Lilliput' items including vehicles, tractor, figures etc £30 - £50

681

A small group of Britains 'Boy Scouts', No. 180 figures £30 - £50

682

A group of twelve painted and cast figures modelled as a football team including referee £50 - £80

683

A group of eight Crescent Toys and other cast petrol pumps £30 - £50

684

A Taylor & Barrett 'donkey ride' set £30 - £50

685

A Johilco 'The Millers' set £30 - £50

686

A group of Timpo 'Arctic' figures and models including sledge and dogs, polar bear etc. £50 - £80

687

A mixed group of cast and painted models including Tower Bridge, a telephone, motorcycles and other items £30 - £50

688

A small group of Crescent cowboys and Indians £20 - £30



689

A mixed group of Britains and other cast and painted figures, mostly military including Egyptian Camel Corps, 'The Buffs' - East Kent Regiment and others (qty) £50 - £80

690

A mixed group of Britains cast and painted figures and models, mostly farmyard including animals and implements, together with a small group of hunting and station figures and a part set of Dinky road signs (qty) £60 - £100

Lot 683



Lot 692

691

A mixed group of cast and painted figures, mostly military including sailors, mounted figures and others, together with a Britains No. 1263 Royal Artillery gun, boxed (qty) £60 - £100

692

A Britains plastic stagecoach and crew, together with various other cast and plastic figures and models, mostly military including sentry boxes and many other items, various scales (qty) £60 - £100

693

A mixed group of Britains and other cast and painted figures, mostly farmyard and zoo animals and accessories (qty) £60 - £100

694

A Wells Brimtoy tinplate clockwork ambulance, a German Kibri station trolley with milk churns and a tinplate cattle shed (3) £50 - £80

695

A boxed pair of 1950's Crescent Matching Texan Pistols £70 - £90

696

Four Japanese tinplate and plastic battery operated toys comprising: Cragston overland stagecoach, Asahi lift dumptruck, Hi-Speed racer and TN hi-power dozer, together with a Marx 'Sparking Climbing bulldozer tractor, all boxed (5) £60 - £100

Lot 693



697

Five tinplate battery/clockwork model bears comprising: Marx 'Sneezing' bear, S&E Japan Dentist bear, Alps Japan Rhythmical drummer, all boxed and two others (5) £50 - £80

698

A mixed group of tinplate clockwork models including a TN Japan Circus Monkey, a battery operated circus lion, both boxed and many other loose models £60 - £100

699

Five tinplate and plastic battery operated toys comprising: McGregor, Good Time Charlie, The Juggling clown, Happy 'n sad magic face clown and Chef/cook, all boxed £60 - £100

700

An Alps Japan battery operated Indian chief drummer, a Tri-and Minic clockwork sailor and two further toys (4) £40 - £60

701

A mixed group of tinplate clockwork and battery operated vehicles including tanks, school bus, tipper trucks etc., together with three toy pistols (qty) £30 - £50



Lot 697

703

A mixed parcel of toys comprising a Coronation Scot railway game, a Gescha Mercedes-Compressor, a balancing gymnast and two further items (5) £30 - £50

704

A French Dinky Toys 893 Unic Sahara Pipe Transporter, boxed £40 - £60

705

Two Dinky Supertoys 521 Bedford articulated lorries, one mustard, one red, both boxed £40 - £60



Lot 702



Lot 706

706

A Dinky 165 Humber Hawk green/black, boxed £30 - £50

702

A Lehmann tin plate clockwork model of a Zeppelin air ship, Model No. EPL-1 651 £40 - £60

Lot 705



All estimates exclude buyer's premium of 21% including VAT which is payable in addition

@WHPeacock /WHPeacockAuctioneers



Lot 707

707

A Dinky trade box containing four 222/23s Streamlined Racing Cars, boxed £80 - £120



Lot 711

711

A Dinky 968 BBC TV roving eye vehicle, boxed £40 - £60



Lot 708

708

A Dinky trade box containing three 3/27C manure spreaders, together with a further trade box containing two 3/27B harvest trailers, both boxed £30 - £50

709

Three Dinky Toys models comprising: 404 Conveyancer fork lift truck, 963 Road Grader and 970 Jones Fleetmaster Cantilever Crane, all boxed (3) £50 - £80

712

Three Dinky Supertoys models comprising: 564 elevator loader, 965 Euclid rear dump truck and 986 Mighty Antar low loader with propeller, all boxed (3) £50 - £80

713

A mixed group of playworn diecast including a Dinky Foden flatbed, a Dinky/Meccano delivery van, a pre-war Dinky ambulance, various delivery vehicles and others (qty) £80 - £120

714

A 1930's Hornby O gauge electric 'Princess Elizabeth' 4-6-2 loco and 6-wheeled tender in maroon LMS livery, engine No. 6201, contained within a fitted red card case £1000 - £1500

Lot 714





Lot 715

715

A Bassett-Lowke O gauge clockwork 'Prince Charles' 4-4-0 loco and 6-wheeled tender, engine No. 62453, boxed *£200 - £300*

716

A Hornby O gauge No. 51 clockwork loco and tender, engine No. 50153, green BR livery, both with red card boxes *£50 - £80*

717

A Hornby O gauge electric SNCF loco, engine No. 8051, two tone green livery, green card box *£50 - £80*



Lot 718

718

A Hornby O gauge electric SNCF loco, engine No. 8051, green livery *£30 - £40*

719

A Hornby O gauge clockwork 'Yorkshire' 4-4-0 loco and 6-wheeled tender in green LNER livery, engine No. 234 *£150 - £200*



Lot 719

720

A Hornby O gauge clockwork 'Flying Scotsman' 4-4-2 loco and 6-wheeled tender in green LNER livery, engine No. 4472 *£100 - £150*



Lot 721 (part)

721

A Hornby O gauge clockwork 'Eton' 4-4-0 loco and 6-wheeled tender in green Southern livery, tender No. 900 *£60 - £100*

722

A Hornby O gauge clockwork 0-4-0 loco and 4-wheeled tender in maroon livery, engine No. 2710, kit construction *£30 - £40*



Lot 720

All estimates exclude buyer's premium of 21% including VAT which is payable in addition

[@WHPeacock](#) [/WHPeacockAuctioneers](#)

723

An O gauge clockwork 4-4-0 loco and 6-wheeled tender in green LNER livery, a further loco and tender in green Great Western livery and a further loco (5) £60 - £100



Lot 724 (part)

724

A Bassett-Lowke O gauge clockwork 4-4-0 loco and 6-wheeled tender, maroon LMS livery, engine No. 1108, together with a Hornby O gauge clockwork loco (3) £80 - £120

725

Three Hornby O gauge clockwork 0-4-0 loco's, various liveries £50 - £80

726

A Japanese tinplate battery operated loco and tender, boxed and two O gauge clockwork loco's (3) £20 - £30

727

A Mettoy O gauge tinplate clockwork No. 5561/1 freight train set, boxed £40 - £60

728

A Hornby O gauge tinplate clockwork No. 21 train set, boxed £30 - £50

729

A Hornby O gauge tinplate clockwork No. 21 passenger train set including two Pullman coaches, boxed £30 - £50

730

A Brimtoy O gauge tinplate clockwork goods train set, boxed £30 - £40

731

A set of three modern Ace Trains O gauge 'vintage' coaches, boxed £20 - £30



732

Six Hornby O gauge tinplate tankers advertising: Pratts, Colas, Wakefield Castrol, Royal Daylight, National Benzole Mixture and Esso (6) £80 - £120

733

Three Hornby O gauge tinplate wagons advertising: Crawford's Biscuits, Jacob & Co. Biscuits and Fyfees Bananas (3) £40 - £60

734

A collection of Hornby O gauge rolling stock including various wagons, carts and other items, together with a quantity of empty boxes (qty)



Lot 733

£60 - £100



Lot 735 (part)

735

Seven Hornby O gauge tinplate wagons comprising: No. 50 rotary tipping wagon, No. 50 wagon, No. 50 side tipping wagon, No. 50 salt wagon 'Saxa', No. 50 crane truck, No. 50 refrigerator van and gas cylinder wagon, all boxed (6) £60 - £100

736

Seven Hornby O gauge tinplate wagons comprising: Breakdown van and crane, Wine wagon double barrel, No. 1 tank wagon 'Manchester Oil Refinery', RS679 side tipping wagon, barrel wagon, flat truck and French flat wagon, together with a Bassett-Lowke goods brake van, all boxed (8) £60 - £100

737

Two Hornby O gauge tinplate Pullman coaches and a Guard's van, all boxed (3) £30 - £40

738

Three Hornby O gauge sets comprising: No. 1 station staff, No. 2 milk cans and truck and No. 5 train and hotel staff, all boxed £50 - £80



Lot 738

739

Six Hornby O gauge tinplate trackside items comprising: 2 x No. 1 buffer stops, No. 1 hot water tank, No. 1 level crossing, No. 2 junction signal and No 1. goods platform, together with a French JEP 47-4 station, all boxed £60 - £100

740

A group of O gauge tinplate trackside items including a station, bridge, signals and other items, together with an Astra signal, boxed (qty) £30 - £50

741

A Marklin Mini-Club Z gauge No. 81862 train set, together with an 81950 wagon set, both boxed (2) £60 - £100

742

A Marklin OO gauge 7051 slewing crane, boxed £40 - £60

743

A Hornby Dublo OO gauge EDP-12 'Duchess of Montrose' passenger set, boxed £40 - £60

744

A Hornby OO gauge R1032 'Mainline Steam' set £20 - £30

745

A mixed group of Hornby Dublo and Hornby OO gauge items including a Silver King loco, further loco's coaches and rolling stock, together with a Marklin tank loco, some boxed (qty) £60 - £100

746

Two NZG Modelle construction vehicles comprising: Grove RT760 mobile crane and Grove TM1500 hydraulic truck crane, both boxed £60 - £80

747

Two Conrad construction vehicles comprising: Krupp KMK 8350 telescopic crane and Krupp KMK 4070 telescopic all-terrain crane, both boxed £80 - £120

748

Two Conrad Demag AC335 all-terrain cranes, both boxed *£80 - £120*

749

Four Conrad and other construction vehicles comprising: Liebherr A912 hydraulic excavator, Liebherr LTM1025 mobile crane, Liebherr LTM1060 mobile crane and Liebherr LTM1160 mobile crane, both boxed *£120 - £150*

750

Six Siku construction vehicles comprising: 2934 heavy-duty tipper truck, 3517 hinged bus, 4010 hydraulic crane truck, 4310 latticed mast crane, 4311 mega lifter and 4810 heavy mobile crane, all boxed *£60 - £100*

751

Four Conrad construction vehicles comprising: Hanomag crawler excavator, Man crane, Mercedes articulated trailer and Volvo Oldtimer truck, both boxed *£60 - £100*

752

Five Joal construction vehicles comprising: Komatsu PC1100LC-6, Komatsu WA900-3 and three Compact models, all boxed *£60 - £100*

753

Three construction vehicles comprising: Dinky 924 Aveling-Barford 'Centaur' dump truck, Komatsu PC650 hydraulic excavator and Kato NK-800 truck crane, all boxed *£40 - £60*

754

A NZG Demag excavator and four further loose construction vehicles (5) *£30 - £50*

755

Six Corgi Eddie Stobart models comprising: CC12203 Scania low loader, CC12803 Scania T-cab, 29103 Guy Invincible, 26404 AEC MkV 8 wheel platform lorry, 97327 Atkinson 8 wheel and 11001 ERF KV8 wheel dropside lorry, together with a Days Gone DG100003 Fordson 7V truck, all boxed (7) *£50 - £80*

756

A mixed group of commercial models including a Corgi Classic 16501 Scammell Highwayman 'Carters', Tekno 57 'Road Sea Express' and nine others, all boxed (11) *£80 - £120*

757

Thirteen Corgi 1:50 scale commercial models comprising: 75603 Renault curtainside, 75406 Leyland DAF, 75408 Leyland DAF, 75806 MAN curtainside, CC12211 Scania curtainside, CC12411 Volvo curtainside, 75701 MAN box trailer, CC12702 ERF ECS curtainside, CC12209 Scania curtainside, 75205 ERF EC series curtainside, CC12205 Scania curtainside, 75405 Leyland DAF curtainside and 76601 Scania refrigerated, all boxed *£100 - £150*

758

A mixed group of diecast models including Corgi Classic Fire Vehicles 'The Cardiff', various Matchbox Models of Yesteryear and many others, all boxed, together with a small group of loose diecast including articulated vehicles and others (qty) *£40 - £60*



Lot 759

759

A West German battery operated tinplate Mercedes racing car, l. 33 cm *£40 - £60*



Lot 760

760

A Shackleton clockwork Foden flatbed lorry, blue cab, red hubs, grey trailer *£80 - £120*



761

Four Corgi comic book models comprising: 3 Batmobile and Batboat, 264 The Incredible Hulk, 436 Spidervan and 925 Batcopter, all boxed *£100 - £150*

762

Three Corgi TV models comprising: 290 Kojak's Buick, 292 Starsky & Hutch Ford Torino and 434 Charlie's Angels Custom Van, all boxed *£80 - £120*

763

A mixed group of diecast comprising: Three Matchbox 'Popeye' models, Corgi 2508 Popeye & Olive Oyl, Corgi Comics 809 Dick Dastardly Racing Car, Corgi 426 Jean Richard booking office and four Corgi 'Muppet Show' models, all boxed, together with a loose Popeye paddle wagon and a Chitty-Chitty Bang-Bang model *£50 - £80*

764

Five Britains models comprising: 2075 show jumper and rider, 2078 male rider and horse, 2079 female rider and horse, 2080 young rider and pony and 8830 The 1st Royal Dragoons, all boxed *£40 - £60*

765

Six diecast models comprising: ERTL Batmobile, Matchbox Y-2 1914 Prince Henry Vauxhall, Matchbox Y-4 1909 Opel coupe, Matchbox Superfast 8 De Tomaso Pantera, Matchbox Superfast 36 Formula 5000, Matchbox Superfast 62 Chevrolet Corvette, together with a Schuco car (7) *£40 - £60*

766

Four Corgi 'Modern Trucks' models, each contained in a plastic case *£30 - £40*

767

A large collection of Oxford Diecast limited edition models, mostly delivery vehicles, buses etc., approx. 169 models, all boxed, together with two collectors catalogue files *£150 - £200*

768

Thirty-two Matchbox Models of Yesteryear 'Fire Engine Series' models, each boxed *£80 - £120*

769

Eleven Matchbox Models of Yesteryear 'Special Edition' models including YS-16 1929 Scammell 100 ton truck-trailer and loco, YS-9 1936 Leyland 'Cub' fire engine and others, all boxed *£50 - £80*

770

Ten Corgi 'Nine Double Nine' series limited edition fire service models, all boxed *£50 - £80*

771

Fourteen Corgi Classics and other diecast vehicles each modelled as a fire engine, all boxed *£60 - £100*

772

Twenty-five Matchbox Collectibles diecast models, each boxed, together with eight further similar models *£40 - £60*

773

A mixed group of diecast models including a Corgi 'Cafe Connection' CC11501 set, ten Lledo 'Whisky Trail' models, Coca Cola models and others, all boxed (qty) *£40 - £60*

774

Thirty-one Lledo Gays Gone models, each boxed *£30 - £40*

775

A Lledo Days Gone 'Brewing in Britain' BB1002 Scammell 6 wheel box van, together with four further models from the same series and four Corgi Classics 'Brewery' models, each boxed (9) *£60 - £100*

776

Twelve Atlas Editions 'Eddie Stobart' models, each boxed, together with a matching notepad and a cased set of six coasters *£80 - £120*

777

Four Corgi Classics models comprising: Whisky Collection 21001 White Horse Albion Clydesdale platform lorry, Commercials 97892 S. Houseman AEC Mercury truck & trailer, Commercials 97893 J. Ayres AEC Mercury truck & trailer and Showmans Range 24801 Silcocks Leyland dodgem truck & caravan set, each boxed *£80 - £120*

778

Six Corgi Classics models comprising: 3 x Bedford type OB coaches, 1 x Bedford O series Van and 2 x Bedford O series Pantechnicon, together with a Corgi Public Transport 97230 Leyland Atlantean Ribble 'Gay' Hostess and an AEC Regal coach (8) *£60 - £80*

779

Five Corgi Classic models comprising: 21401 Wall's AEC refrigerated box trailer set, 19401 Ken Thomas Ltd Bedford S sack truck set, 97930 ERF tanker - Blue Circle, 13501 GC Munton Foden 521 'Mickey Mouse' articulated and low loader and 16701 Wrekin Scammell articulated and low loader, all boxed *£60 - £80*

780

Six Corgi 'Her Majesty The Queen's 40th Anniversary' models, eight Corgi Collectors' Classics models, three Corgi Classic Commercials models and four further Corgi limited edition and other models, all boxed (21) *£80 - £120*

781

Nineteen Vanguards 1:43 scale models, mostly service and delivery vehicles, each boxed *£40 - £60*

782

Twenty Exclusive First Editions items, each modelled as a coach or bus, together with two Gilbow Railway Collection models, each boxed (22) *£40 - £60*

783

Nine Corgi The Original Omnibus limited edition models, each modelled as a bus, all boxed *£30 - £40*

784

Twenty Corgi 'GB' models, mostly buses and vans, each boxed *£40 - £60*

785

Twelve Corgi Classic models comprising: 1 x Bedford O series Pantechnicon and 11 x Bedford type OB coaches, all boxed *£20 - £30*

786

Eight Corgi Classics The Beatles 'Album Cover' models comprising: BT78213 Sgt. Peppers, BT78214 Revolver, BT78215 Help!, BT78216 Abbey Road, BT78218 Sgt. Peppers, BT78219 Revolver, BT78220 Help! and BR78221 Abbey Road, each contained in a tin *£60 - £100*

787

Fifteen Oxford diecast commercial and other vehicles, six Corgi models, a Corgi 'Road Traders' limited edition model and two H. Samuel models, each boxed (24) *£40 - £60*



Lot 777



788

Six Hornby Railways OO gauge loco's and tenders including R082 'King James II' R373 'Evening Star' and four others, each boxed

£80 - £120

789

Six Hornby OO gauge loco's and tenders including R2105D BR 2-10-0, R2321 BR 4-6-0 and four others, each boxed

£80 - £120

790

Four Hornby OO gauge diesel loco's including 'Western Ranger' and three others, all boxed

£40 - £60

791

A group of nine Hornby OO gauge loco's including 'Royal Scot', 'Royal Lancer' and others, together with various tenders (qty) (af)

£80 - £120

792

A mixed group of Dapol, Bachmann, Hornby and other OO gauge coaches and rolling stock, some boxed (qty)

£40 - £60

793

A mixed group of OO gauge items consisting: Hornby Railways R842 LMS class 5 loco, Hornby Railways Inter-City 125 loco, both boxed, together with an 'Evening Star' loco, a shunter, rolling stock, trackside building, Zero 1 control units and other items (qty)

£80 - £120

794

A mixed group of pre-war and later diecast commercial models, mostly Dinky including observation coaches, milk floats and others (14)

£30 - £50

Lot 791 (part)

795

A mixed group of pre-war and later diecast commercial models, mostly Dinky including petrol tankers, ambulances, 'Slumberland' Guy van and others (18)

£60 - £100

796

Spare lot

797

A mixed group of pre-war and later diecast commercial models, mostly Dinky including Foden flatbed, Austin covered wagon van and others (8)

£50 - £80

798

A mixed group of diecast commercial and construction models, mostly Dinky including crane, refuse wagon and others (13)

£40 - £60

799

A mixed group of diecast commercial, construction and farm models, mostly Dinky including Massey-Harris tractor, Timpo 'Pickfords' delivery van and others (18)

£30 - £40

800

A mixed group of pre-war and later diecast commercial models, mostly Dinky including flatbed wagons and others (12)

£50 - £80

801

A mixed group of pre-war and later diecast models, mostly Dinky including sports cars, saloon cars, racing cars and others (28)

£100 - £150

802

A Corgi 261 James Bond Aston Martin DB5, boxed, together with five further Corgi models comprising: 2 x 268 The Green Hornet, 261 James Bond, 497 Man from Uncle 'Thrush Buster' and 267 Batmobile (mostly with reproduction boxes) (6) £100 - £150



Lot 805



803

Three Corgi models comprising: 104 Dolphin 20 cruiser, 233 Heinkel economy car and 482 Chevrolet 'Fire Chief', all boxed (Heinkel box reproduction) £50 - £80

804

Five Corgi and Corgi Major toys comprising: 458 ERF earth dumper, 1116 launcher, 1128 Prestman luffing shovel, 1137 Ford tilt cab and 1142 'Holmes Wrecker' recovery vehicle, all boxed £60 - £100

805

Two Dinky Toys models comprising: 100 Lady Penelope's FAB 1 and 103 Spectrum patrol car, both boxed (FAB car with reproduction box) £50 - £80

Lot 802



806

Five Dinky Toys models comprising: 40J Austin Somerset saloon, 107 Sunbeam Alpine sports, 157 Jaguar XK120 coupe, 178 Plymouth Plaza and 189 Triumph Herald, all boxed £60 - £100

807

Three Dinky Toys models comprising: 138 Hillman Imp saloon, 150 Rolls Royce Silver Wraith and 215 Ford GT racing car, all boxed (Rolls with reproduction box), together with two Atlas Editions reproduction models (5) £40 - £60



Lot 817 (part)

808

Four Dinky Toys aviation models comprising: 702 DH Comet, 734 Supermarine jet fighter, 735 Gloster Javelin fighter and 736 Hawker Hunter fighter, all with reproduction boxes £30 - £40

809

Four Dinky Toys models comprising: 295 Atlas bus, 470 Austin van 'Shell', 492 loud speaker van and 626 military ambulance, all boxed £100 - £150

810

Four Atlas Editions Dinky Supertoys models comprising: 36B Willeme tractor, 905 Foden flat truck, 934 Leyland Octopus wagon and 942 Foden 14-ton tanker, all boxed £40 - £60

811

A Dinky Supertoys 521 Bedford articulated lorry, mustard cab and body, black hubs, boxed £30 - £40

812

A Dinky Supertoys 522 Big Bedford lorry, maroon cab, tan body, boxed £30 - £40

813

A Dinky Supertoys 504 Foden 14-ton tanker red cab, stone tanker, boxed £30 - £40

814

A Dinky Supertoys 504 Foden 14-ton tanker, two tone blue, boxed £30 - £40

815

A Dinky Supertoys 531 Leyland Comet lorry, red cab, yellow body, boxed £30 - £40

816

Six Dinky Toys and Dinky Supertoys models comprising: 562 dumper truck, 563 heavy tractor, 571 Cole mobile crane, 582 Pullmore car transporter, 958 snow plough and 965 Euclid rear dump truck, all boxed £60 - £100

817

A collection of Matchbox models comprising: Superfast 6 Mercedes 350SL, Superfast 14 Iso Grifo, Superfast 17 The Londoner, Superfast 34 Formula 1 racing car, 9 boat and trailer, 14 ambulance, 19 saloon car, 19 Lotus racing car, 23 caravan trailer, 26 cement mixer, 25 flat cab/container, 31 American Ford station wagon, 51 tipping trailer, 2 x 52 BRM racing cars, M-6 racing car transporter, No. 1 Major pack, 2 x No. 2 accessory packs, No. 1 accessory pack, 2 x service stations and a modern model, all boxed £250 - £300

818

Seven Corgi and Corgi Major models comprising: 102 Rice's pony trailer, 112 Rice's Beaufort double horse box, 503 circus giraffe transporter, 3 x 1121 Chipperfield's circus crane trucks and 1130 circus horse transporter, all boxed (most with reproduction boxes) £60 - £100

819

Six Corgi racing cars comprising: 2 x 155 Lotus Climax, 158 Lotus Climax, 2 x 159 Cooper-Maserati and 330 Porsche Carrera 6, all boxed, together with a 1501 figure set and five loose racing cars (qty) £80 - £120

820

A Schuco micro-racer 1043/1 model, a Scalecraft Jaguar 'E' type plastic kit and Tri-ang 1/20 scale MGA, all boxed (3)

£40 - £60

821

A quantity of empty diecast boxes, mostly Matchbox Superfast (qty)

£80 - £120

822

Six Hot Wheels Ferrari gift sets, each in a tin case and red card box

£40 - £60

823

A large quantity of Britains and other farmyard figures, accessories and buildings (qty)

£100 - £150

824

A Hornby Railways OO gauge GWR freight set, boxed, together with a tank loco, a coach and various other accessories (qty)

£40 - £60

825

A group of Lone Star cast metal N gauge trains, track and accessories (qty)

£30 - £40

826

Three Scalextric cars comprising: C.025 Ferrari 312, C.052 Ford Escort and C.119 Porsche, all boxed, together with a 19th edition catalogue

£40 - £60

827

Three early 20th century German tinplate magic lanterns, together with a selection of glass slides, each in its original pine case

£60 - £100



833

Six pre-war and later Dinky models including a red petrol tanker, a sports car and four others

£30 - £40

Lot 832



Lot 830 (part)

828

A Hornby O gauge electric 4-4-2 loco in green LNER livery, engine No. 1784, together with various accessories including station, buffers, coaches, level crossing etc. (qty)

£60 - £100

829

A Hornby O gauge electric 4-4-2 'Royal Scot' loco, engine No. 6100, together with three further clockwork loco's, a water tower, signal and French station sign (qty)

£60 - £100

830

A Hornby O gauge electric M3 tank loco, green LNER livery, engine No. 460, together with six items of rolling stock including a 'Shell' petrol tank wagon, all boxed (7)

£60 - £100

831

A mixed group of wooden toys comprising a Tri-ang barrow, a pull along horse, two tanks and a cart, together with a tinplate bus (6)

£40 - £60

832

An early 20th century tinplate clockwork limousine with Dunlop Cord tyres, l. 32 cm (af)

£60 - £100

834

Two Dinky Toys military models comprising: 651 centurion tank and 660 tank transporter, both boxed £20 - £30

835

A Britains 1718 searchlight, boxed £20 - £30

836

Four Dinky and Dinky Supertoys models comprising: 319 Weeks farm trailer, 320 harvest trailer, 561 Blaw Know bulldozer and 971 Cole mobile crane, all boxed £40 - £60

837

Three Dinky Toys models comprising: 211 Triumph TR7, 503 Alfetta GTV and DY-S 17 1939 Triumph Dolomite, all boxed £30 - £40

838

Two Corgi Formula 1 models comprising: 190 JPS Lotus and 191 Texaco Marlboro McLaren, together with two Bburago models, Ferrari Testa Rossa and Mercedes SSK, all boxed (4) £30 - £40

839

Five Tri-ang Minic tinplate clockwork items including a pond yacht, Royal Mail van and others £40 - £60

840

Twenty-four Matchbox Models of Yesteryear diecast models, mostly delivery vehicles, all boxed £20 - £30

841

A Hornby Dublo EDL18 2-6-4 tank loco, black BR livery, engine No. 80054, boxed £20 - £30

842

A Hornby Dublo 0-6-2 tank loco, black BR livery, engine No. 69567, plain card box £20 - £30

843

A Hornby Dublo EDL17 0-6-2 tank loco, black LNER livery, engine No. 6917, boxed £20 - £30

844

A Hornby Dublo 3232 co-co diesel-electric loco, green BR livery, boxed £40 - £60

845

A Hornby Dublo LT25 2-8-0 freight loco and tender, black BR livery, engine No. 48158, boxed £40 - £60

846

A Hornby Dublo EDL1 'Silver King' 4-6-2 loco and tender, black BR livery, engine No. 60016, boxed £30 - £40

847

A Hornby Dublo OO gauge tank loco, a Hornby 'Duchess of Atholl' loco and tender and four coaches (qty) £40 - £60

848

A large quantity of Hornby Dublo track, points, trackside buildings and accessories (qty) £60 - £100

849

A quantity of OO gauge accessories including trackside buildings, controllers, modelling equipment etc. (qty) £30 - £40

850

A quantity of Hornby Dublo rolling stock including TPO mail van set, a 4620 breakdown crane, coaches, wagons and other items, mostly boxed (qty) £60 - £100

851

A Hornby OO gauge R1038 'Orient Express' set, boxed £80 - £120



Lot 846

All estimates exclude buyer's premium of 21% including VAT which is payable in addition

 @WHPeacock  /WHPeacockAuctioneers

852

A Hornby OO gauge R1039 'Flying Scotsman' set, boxed *£40 - £60*

853

A Hornby OO gauge R2417 0-6-0 loco, engine No. 3256, together with six wagons and two track pack sets, all boxed (9) *£40 - £60*

854

A group of Hornby O gauge tinplate items including a 0-4-0 loco, Pullman coaches, trackside buildings, tunnels etc. (qty) *£80 - £120*

855

A Hornby Dublo EDP12 passenger train set including 'Duchess of Montrose' loco and A3 power control unit, both boxed *£40 - £60*

856

An Ever Ready OO gauge TG10 battery operated electric train set, boxed *£40 - £60*

857

An early Scalextric racing set including two tinplate cars, boxed *£40 - £60*

858

A brass model of a steam powered traction engine, h. 19 cm *£40 - £60*

859

A large collection of 1990's Matchbox 'Racing' models and sets, further Matchbox models, Majorette and others, all boxed (qty) *£120 - £150*

860

A quantity of cast, plastic and other figures including zoo animals, Herald 'Swoppets' models, dinosaurs, Robin Hood and others (qty) *£60 - £100*

861

A large quantity of playworn diecast including Dinky Supertoys Foden flatbed, sports cars, racing cars, military models and many others (qty) *£100 - £150*

862

A MB Transformers 'Megatron' set, boxed *£30 - £40*

863

A Steel-Tec Harley-Davidson construction set, boxed and with instructions *£20 - £30*

864

A 1990's Mattel Space Patrol Station, with instructions *£20 - £30*

865

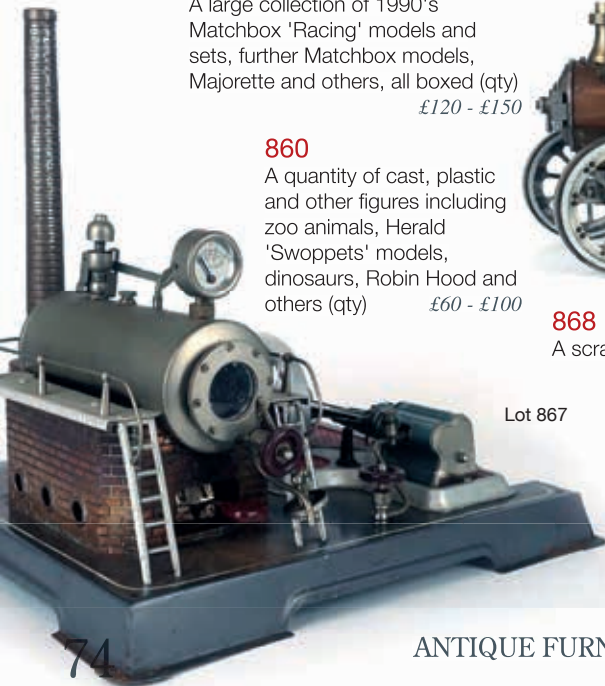
A mixed group of playworn diecast and a small group of cast metal and plastic figures *£20 - £30*

866

A group of modern diecast models, mostly Oxford Diecast including delivery vehicles and others, all boxed (qty) *£40 - £60*

867

A tinplate stationary steam engine, possibly Wilesco, h. 31.5 cm *£40 - £60*



Lot 867



Lot 868

868

A scratch built model traction engine, h. 19 cm *£40 - £60*

869

A Hornby No. 50 O gauge tinplate clockwork 0-4-0 loco in black livery, engine No. 60199, together with its matching tender, both boxed (2) *£40 - £60*

Hammer Prices - September 2018

1	£50	94	£340	152	£120	211	£45	292	£60	415	£40	474	£900
2	£700	95	£75	155	£160	214	£38	293	£60	416	£120	475	£750
3	£130	97	£45	156	£100	217	£200	321	£1,700	417	£70	476	£65
4	£55	100	£1,200	157	£70	218	£32	322	£50	418	£65	477	£120
7	£100	101	£65	158	£60	219	£26	323	£45	419	£45	478	£80
8	£120	103	£38	159	£80	220	£16	324	£85	420	£45	479	£45
9	£180	104	£26	160	£170	221	£50	325	£50	423	£60	480	£90
10	£120	105	£36	162	£110	226	£50	326	£85	424	£50	481	£80
11	£650	106	£70	164	£340	227	£65	327	£60	425	£950	482	£80
12	£120	107	£60	165	£650	228	£90	328	£85	427	£65	483	£210
15	£180	108	£28	167	£24	229	£80	329	£80	429	£60	484	£70
16	£32	109	£65	168	£130	230	£40	330	£50	430	£70	485	£65
17	£55	110	£300	169	£190	231	£160	331	£50	431	£120	486	£110
18	£20	111	£170	171	£75	232	£100	332	£30	434	£45	487	£55
19	£65	112	£110	172	£60	234	£50	335	£180	435	£35	489	£22
21	£900	113	£420	173	£30	235	£1,200	336	£85	436	£80	490	£50
22	£65	114	£340	174	£140	238	£100	337	£80	438	£100	491	£320
23	£550	115	£40	175	£45	239	£100	338	£70	439	£60	492	£55
24	£40	116	£150	176	£36	240	£45	339	£100	440	£65	601	£700
25	£300	117	£38	177	£190	241	£65	340	£30	441	£130	602	£85
27	£150	118	£60	178	£45	244	£280	341	£35	442	£70	603	£140
30	£95	119	£30	179	£150	246	£90	342	£160	443	£100	604	£200
31	£95	120	£40	180	£38	262	£85	344	£120	444	£210	605	£200
32	£120	121	£120	181	£140	263	£280	345	£20	445	£30	606	£160
33	£80	122	£70	182	£65	264	£60	346	£30	446	£200	607	£200
34	£220	123	£40	183	£240	265	£20	347	£200	449	£40	609	£110
35	£280	124	£60	184	£120	266	£180	348	£80	450	£40	610	£200
36	£200	125	£95	185	£70	267	£750	349	£55	451	£40	611	£110
37	£65	126	£60	186	£55	268	£95	350	£550	452	£26	612	£90
38	£80	128	£130	187	£280	269	£190	352	£70	453	£90	613	£210
39	£85	129	£90	188	£75	270	£95	353	£200	455	£110	616	£34
42	£90	132	£1,200	189	£75	271	£160	354	£75	456	£150	617	£80
45	£100	133	£2,300	190	£90	272	£60	355	£70	457	£75	618	£45
47	£40	134	£50	191	£120	273	£280	356	£130	458	£120	620	£36
48	£70	135	£50	193	£55	274	£150	358	£70	459	£75	621	£36
50	£50	136	£130	194	£55	275	£50	360	£30	460	£50	623	£65
53	£150	137	£45	196	£85	276	£22	361	£60	461	£70	624	£420
54	£550	140	£120	197	£110	277	£34	362	£20	462	£55	625	£800
55	£140	141	£200	198	£70	279	£36	364	£30	463	£75	626	£95
56	£95	142	£70	199	£90	280	£45	365	£30	464	£260	627	£200
84	£550	143	£30	201	£60	281	£22	403	£60	465	£360	630	£45
85	£120	144	£220	203	£150	282	£160	405	£80	466	£95	631	£36
86	£130	145	£100	204	£320	283	£22	406	£1,500	467	£270	634	£60
87	£20	146	£400	205	£30	284	£100	407	£95	468	£160	638	£40
88	£120	147	£95	206	£1,200	285	£70	408	£45	469	£560	639	£190
89	£20	148	£60	207	£380	286	£75	409	£40	470	£140	642	£220
90	£50	149	£150	208	£600	287	£55	411	£50	471	£75	643	£80
91	£50	150	£32	209	£440	288	£100	412	£160	472	£60	644	£36
92	£150	151	£60	210	£20	291	£60	413	£50	473	£150	645	£50

All estimates exclude buyer's premium of 21% including VAT which is payable in addition

 @WHPeacock  /WHPeacockAuctioneers

646	£360	702	£190	758	£200	810	£200	864	£110	926	£65	1004	£115
647	£130	703	£180	759	£190	811	£250	865	£200	928	£170	1005	£120
648	£1,500	704	£350	760	£190	812	£110	866	£380	929	£420	1007	£70
649	£260	705	£45	761	£200	813	£65	867	£380	930	£26	1008	£100
650	£210	706	£85	762	£180	814	£220	868	£150	931	£600	1009	£720
651	£270	707	£60	763	£190	815	£340	869	£95	932	£80	1010	£110
653	£75	708	£60	764	£190	816	£110	871	£300	933	£35	1011	£125
654	£200	709	£55	765	£190	817	£50	872	£420	934	£30	1012	£80
655	£130	710	£240	766	£200	818	£490	873	£100	935	£34	1013	£450
656	£110	711	£80	767	£1,800	819	£140	874	£140	936	£55	1014	£145
657	£260	712	£400	768	£320	820	£100	875	£280	937	£40	1015	£210
659	£50	713	£420	769	£3,900	821	£800	877	£130	939	£55	1016	£250
660	£90	714	£110	772	£110	822	£100	878	£460	940	£12	1017	£95
661	£240	715	£280	773	£80	823	£150	879	£200	944	£250	1018	£205
662	£95	716	£280	774	£110	824	£230	880	£3,200	945	£55	1019	£130
663	£180	717	£75	775	£38	825	£150	881	£90	946	£140	1020	£140
664	£65	718	£120	776	£155	826	£260	882	£290	947	£120	1021	£30
665	£150	719	£760	777	£200	827	£130	884	£70	948	£50	1022	£150
666	£32	723	£110	778	£200	828	£90	885	£160	949	£200	1023	£580
667	£320	724	£140	779	£95	829	£85	886	£1,100	950	£200	1024	£180
668	£620	725	£28	780	£90	830	£75	887	£100	951	£80	1025	£115
669	£260	726	£180	781	£95	831	£70	888	£110	952	£70	1026	£360
670	£180	727	£30	782	£90	832	£55	889	£240	953	£230	1027	£120
671	£130	728	£85	783	£140	833	£65	890	£280	955	£60	1028	£50
672	£130	729	£150	784	£150	834	£50	891	£80	958	£100	1030	£280
673	£160	732	£45	785	£100	835	£70	892	£100	959	£20	1031	£80
674	£100	733	£100	786	£80	839	£125	893	£65	960	£150	1032	£200
675	£130	734	£70	787	£28	840	£180	894	£55	961	£70	1033	£140
676	£55	736	£30	788	£420	841	£110	895	£75	962	£100	1034	£200
677	£65	737	£75	789	£500	842	£85	896	£100	965	£350	1035	£1,700
678	£480	738	£20	790	£280	843	£90	897	£140	966	£50	1036	£140
679	£160	739	£160	791	£340	844	£3,500	898	£110	967	£100	1039	£280
680	£210	740	£90	792	£55	845	£110	900	£75	968	£100	1040	£220
681	£580	741	£65	793	£200	846	£210	901	£45	969	£50	1041	£75
682	£360	742	£55	795	£170	847	£360	902	£45	971	£20	1043	£110
683	£130	743	£65	796	£95	848	£240	903	£70	972	£60	1044	£375
684	£90	744	£105	797	£75	849	£160	906	£2,200	973	£200	1045	£150
685	£120	746	£80	798	£100	851	£420	907	£290	991	£4,050	1046	£100
686	£90	747	£80	799	£95	852	£210	910	£100	992	£1,100	1047	£60
687	£45	748	£80	800	£30	853	£2,750	912	£80	993	£2,700	1048	£25
689	£1,400	749	£80	801	£260	854	£280	913	£90	994	£1,100	1049	£65
690	£320	750	£150	802	£160	855	£750	914	£450	995	£700	1050	£2,000
691	£190	751	£80	803	£140	856	£75	917	£35	996	£880	1051	£40
692	£300	752	£120	804	£135	857	£300	919	£500	997	£220	1052	£100
693	£900	753	£85	805	£390	858	£380	920	£2,300	998	£1,100	1053	£120
695	£200	754	£34	806	£110	860	£100	921	£1,800	999	£420	1054	£110
696	£300	755	£200	807	£90	861	£240	923	£70	1001	£710	1055	£200
700	£60	756	£250	808	£190	862	£110	924	£110	1002	£155	1056	£320
701	£180	757	£200	809	£140	863	£240	925	£340	1003	£100		

watch us...

visit our website and take a look at our Youtube video to get an understanding of our busy and exciting auction sales and other services we offer.

follow us...

join us on facebook and twitter to keep upto date with forthcoming auctions, events and sale highlights. Our website is packed up to date with current auction details and important information
www.peacockauction.co.uk

visit us...

Our saleroom is open for entries Monday to Wednesday, viewing every Friday with our four sales commencing at 10am each Saturday

Auction Highlight



A white metal two section clip of openwork design set brilliant and baguette cut diamonds throughout in the Belle-Epoque manner, overall l. 6.5 cm, 43.3 gms

Hammer Price £3,200

Terms used in this catalogue have the following meanings.

Please note that all statements in this catalogue, regarding authorship, attribution, origin, date, age, provenance and condition are statements of opinion and are not treated as a statement of fact.

1. A N ARTIST

In our opinion, the work is by the artist.

2. ATTRIBUTED TO A N ARTIST

In our opinion, the work is of the period of the artist which may be whole or in part the work of the artist.

3. STUDIO, (CIRCLE OR WORKSHOP) OF A N ARTIST

In our opinion, the work is of the period and closely relates to his style.

4. SCHOOL OF A N ARTIST

In our opinion, the work is by a pupil or a follower of the artist.

5. MANNER OF A N ARTIST

In our opinion, the work is in the style of the artist and is of a later period.

6. AFTER A N ARTIST

In our opinion, this work is a copy of the artist.

7. ASCRIBED TO A N ARTIST

In our opinion, this work is not by the artist, however, previous scholarship has noted this to be a work by the artist.

8. SIGNED (OR DATED)

The work has a signature (or date) which is in our opinion is genuine.

9. BEARS SIGNATURE (OR DATE)

The work has a signature (or date) which in our opinion is not authentic.

W&H PEACOCK

AUCTIONEERS & VALUERS

Valuation Days

Friday 12th, 26th October

10.00am - 3.00pm

If you have an individual item or a collection that you are thinking of selling we would be delighted to provide complimentary valuation advice at one of our scheduled events. Alternatively, you may prefer to email us an image of your collection or treasures, or ring us to arrange a house visit by one of our specialists.



Auction Entries Invited

Bedford Auction Centre, Eastcotts Park, Wallis Way, Bedford, MK42 0PE
01234 266 366 or info@peacockauction.co.uk

peacockauction.co.uk

W&H PEACOCK
AUCTIONEERS & VALUERS

TO BE SOLD BY AUCTION

Thursday 11th October
**Christmas Stock,
Decorations & Trees**

Commencing at 11.00am



A large consignment of retail Christmas stock including; Holly garlands, Nativity figures, Ornaments, Tree decorations, Gift sacks, Candles and Tea light holders, Cookie jars, Novelty figures, Garden display items, Musical carousels, Gift Sets, Artificial Trees, Soft Toys, Illuminated display items, LED and Icicle string lights, Wrapping paper and cards, etc

Viewing: Wednesday 10th October 9am to 8pm and morning of sale from 9am

St Neots Auction Centre

75 New Street, St Neots, Cambridgeshire PE19 1AJ

01480 474 550 or sn@peacockauction.co.uk

www.peacockauction.co.uk

Notes
