



LIGHTING





FoxFury Scene Lights.....2
FoxFury Right Angle Lights.....3
FoxFury Head Torches.....4
FoxFury Lights.....5



BrightStar Hand Search Lights.....7
BrightStar Right Angle Lights & Head Torches.....8
BrightStar Torches.....9



LedLenser Hand Torches.....11
LedLenser Head Torches.....12
LedLenser Area Lights.....13



eFlare Beacons.....15
eFlare Accessories.....16



TradeTuff / SCANGRIP Area Lights.....18
TradeTuff / SCANGRIP Accessories.....19
TradeTuff / SCANGRIP ATEX Lights.....20



Specialist Demarcation Lights & Signs.....21



FOX FURY[®]
LIGHTING SOLUTIONS



FoxFury Scene Lights

These portable LED area/scene lights are waterproof, rechargeable and cordless, making them suitable for use in a variety of circumstances/industries. They are fire and impact resistant which is ideal for use within the emergency services & electrical utilities. The lights are rugged, portable, compact and self-contained allowing for easy and safe transportation.



Nomad Now Utility Mount
FF-85-048



Nomad Now Magnetic Mount
FF-85-040



Nomad Now Horizontal Right-Angle Mount
FF-85-046



Nomad Prime Diffuser Lens, Amber
FF-85-052



Nomad Prime Diffuser Lens, Red
FF-85-050



LIGHT OUTPUT

MODE	LUMENS	RUN TIME
High	3,000	3 hours
Medium	1,200	9 hours
Low	500	24 hours

LIGHT OUTPUT

MODE	LUMENS	RUN TIME
High	5,000	3 hours
Medium	2,000	9 hours
Low	600	24 hours
Blink	5,000	9 hours

LIGHT OUTPUT

MODE	LUMENS	RUN TIME
High	8,000	3 hours
Medium	2,400	9 hours
Low	900	24 hours
Blink	8,000	10 hours

LIGHT OUTPUT

MODE	LUMENS	RUN TIME
High	16,000	3 hours
Medium	7,000	9 hours
Low	3,000	24 hours

CAT NO	FF-200-400-100	FF-200-800	FF-200-900	FF-200-1200
MODEL	NOW	PRIME	360	TRANSFORMER
BATTERY	Li-ion Rechargeable	Li-ion Rechargeable	Li-ion Rechargeable	NiMH Rechargeable
CHARGE TIME	4 hours	5 hours	7 hours	8 hours
EXTENSION HEIGHT	8.7 in (221mm)	8ft (2.4m)	8.5ft (2.6m)	12.9ft (3.9m)
TILT ANGLE	45° (either direction)	115°	120°	90°
WEIGHT	2 kg	8.3 kg	11.1 kg	24.25 kg



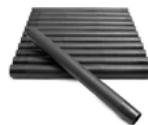
Nomad Prime Diffuser Cap & Colour Bands
FF-850-080



Nomad 360 Colour Bands
FF-85-070



Nomad Prime Replacement Batteries
FF-600-200-800



Nomad 360 Replacement Batteries
FF-600-200-900



Nomad Now & Prime Replacement Charger
FF-600-120



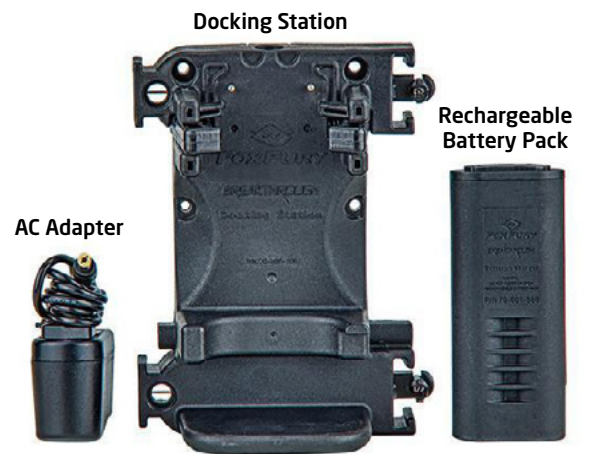
Nomad 360 Replacement Charger
FF-600-120

FoxFury Right Angle Lights

FoxFury's versatile hybrid right-angle lights feature a clip for pocket, belt or chest wear. These search tools are durable, fire resistant and completely waterproof.



CAT NO	FF-380-BTS-BL	FF-380-BT2P-BLR	FF-380-FF01-BT2-BL
MODEL	BTS	BT2+ HYBRID	BT2-IS INTRINSIC HYBRID
BATTERY	(4) AA batteries	Rechargeable battery or (4) AA batteries	(4) AA batteries
BATTERY LIFE	3 - 12 hours	2 - 8 hours	3 - 12 hours
LUMENS	80 - 400 Lumens	100 - 700 Lumens	40 - 200 Lumens
BEAM DISTANCE	2,123 ft (647 m)	5,600 ft (1,707 m)	3,000 ft (914 m)
WEIGHT	590 g (with battery)	680 g (with rechargeable battery)	680 g (with battery)



CAT NO	FF-600-380BT
MODEL	BT RECHARGEABLE KIT
WEIGHT	298 g

FoxFury Head Torches

FoxFury's wide-angle LED headlamps and helmet lights provide panoramic lighting for immediate situation assessment. Powerful side-mounted LED helmet lights with custom adaptors also available. Rear safety LED (available on most models) helps user be seen at night.



COMMAND+ TILT WHITE & AMBER LED HEADLAMP / HELMET LIGHT

CAT NO	FF-420-T15
BATTERY	(4) AA batteries
BATTERY LIFE	Up to 14 hours
LUMENS	100 Lumens
BEAM DISTANCE	114 ft (35 m)
WEIGHT	272 g



PERFORMANCE INTRINSIC TASKER LED HELMET LIGHT

CAT NO	FF-400-FF417-2
BATTERY	(4) AA batteries
BATTERY LIFE	Up to 8 hours
LUMENS	54 Lumens
BEAM DISTANCE	71 ft (22 m)
WEIGHT	318 g



COMMAND+ TILT WHITE LED HEADLAMP / HELMET LIGHT

CAT NO	FF-420-T09
BATTERY	Rechargeable NiMH Battery or (4) AA batteries
BATTERY LIFE	Up to 14 hours
LUMENS	100 Lumens
BEAM DISTANCE	114 ft (35 m)
WEIGHT	272 g



COMMAND+ TILT WHITE & GREEN LED HEADLAMP / HELMET LIGHT

CAT NO	FF-420-T06
BATTERY	(4) AA batteries
BATTERY LIFE	Up to 14 hours
LUMENS	100 Lumens
BEAM DISTANCE	114 ft (35 m)
WEIGHT	272 g

The Scout Clip Light with White LEDs is a versatile product that serves as a utility light, task light, search light, and more. It's rugged, works in all weather, and is fully submersible. The Scout models have a secure J-Clip that enables multi-wear use options. The light runs on 3 AA batteries. Scout lights are available in black or orange.



CAT NO	FF-301-010	FF-301-004	FF-301-312
MODEL	SCOUT CLIP LIGHT WITH WHITE LEDS	SCOUT CLIP LIGHT WITH WHITE & RED LEDS	SCOUT CLIP LIGHT - FORENSIC BLUE
BATTERY	(3) AA batteries (included)	(3) AA batteries (included)	(3) AA batteries (included)
BATTERY LIFE	12 - 50 hours	12 - 60 hours	12 hours
LUMENS	17 - 65 Lumens	10 - 49 Lumens	470nm Wavelength
WEIGHT	153 g	153 g	153 g



RUGO™ Drone Mounts For YUNEEC H520 and TYPHOON H
FF-85-023



T.E.D. TACTICAL ELECTRONIC DISTRACTION DEVICE

RUGO™ R1 DRONE AND CAMERA LIGHT

CAT NO	FF-700-301
BATTERY	Rechargeable Lithium-Ion Battery
BATTERY LIFE	1 - 6.75 hours
LUMENS	70 - 620 Lumens
BEAM DISTANCE	76 ft (23 m)
WEIGHT	158 g



RUGO™ Quick Swap® Power Pack
FF-N50-200

The Tactical Electronic Distraction Device - T.E.D.D. is for use in training, riots, SWAT, Corrections and should be used only by trained professionals. The T.E.D.D. has a solid steel base, high temperature poly-carbonate side, and nylon top cover. The heavy base is designed to right itself when overturned. It is submersible to 10 ft (3.3 m) and is impact resistant. It is programmable with 8 Light & Sound Modes and 4 activation delays.



RUGO™ Drone Mounts For DJI PHANTOM 4
FF-85-027



RUGO™ Handlebar/ Drone Mount
FF-85-026



RUGO™ Quick Swap® Power Pack with Strobe
FF-N50-220

CAT NO	FF-750-500
SOUND	120dB (at 1m) 3kHz
BATTERY	Rechargeable Lithium-Ion Battery
BATTERY LIFE	60 minutes
LUMENS	2600 Lumens
WEIGHT	500 g



***Koehler* BrightStar™**



The Lighthawk LED lanterns are fully waterproof to 1m for 24hrs, have articulating heads along with multiple functions such as low battery indicator, LED charge status indicator & flashing LED tail lights. They also have the advantage of being wall and vehicle mountable.

BrightStar Hand Search Lights

Used in UK NHS Ambulance Trusts, Fire and Rescue Services and the RNLI.



LED LIGHTHAWK GEN II (INTRINSICALLY SAFE)

CAT NO	BS-07632-YELLOW
BATTERY	Rechargeable Lithium-Ion Battery
BATTERY LIFE	Up to 14 hours
LUMENS	300 Lumens
BEAM DISTANCE	447 m
WEIGHT	860 g



LIGHTHAWK VISION 600

CAT NO	BS-07732-VISION
BATTERY	Rechargeable Lithium-Ion Battery
BATTERY LIFE	Up to 6.25 hours
LUMENS	600 Lumens
BEAM DISTANCE	250 m
WEIGHT	860 g

BS-9B-1962-1

Lighthawk Battery, 4-Cell for Lighthawk GEN II & Vision

BS-9B-1963-2

Lighthawk Battery, 6-Cell for Lighthawk GEN II & Vision

BS-07690

Lighthawk Charger Base for Lighthawk GEN II

BS-20627

Lighthawk 240v Charger Lead with UK Plug

BS-07870

Lighthawk 12v Charger Lead

BS-21132

Shoulder Strap for Lighthawk

The Razor torches are lightweight, fully waterproof and durable to withstand most abusive environments. They come with ATEX approvals and are intrinsically safe.



RAZOR

CAT NO	BS-60102
BATTERY	(3) AA batteries
BATTERY LIFE	Up to 6.75 hours
LUMENS	125 Lumens
BEAM DISTANCE	170 m
WEIGHT	190 g



RAZOR 2

CAT NO	BS-60108
BATTERY	(3) AA batteries
BATTERY LIFE	Up to 7 hours
LUMENS	325 Lumens
BEAM DISTANCE	237 m
WEIGHT	198 g

BrightStar Right Angle Lights & Head Torches



VISION LED HEADLAMP
(INTRINSICALLY SAFE)



VISION LED HEADLAMP RECHARGEABLE
(INTRINSICALLY SAFE)

CAT NO	BS-200501
BATTERY	(3) AAA batteries
BATTERY LIFE	Up to 20 hours
LUMENS	185 Lumens
BEAM DISTANCE	65 m
WEIGHT	90 g

CAT NO	BS-200521
BATTERY	Rechargeable Lithium-Ion Battery
BATTERY LIFE	Up to 100 hours
LUMENS	185 Lumens
BEAM DISTANCE	63 m
WEIGHT	99 g



Intrinsically Safe
Waterproof
Oversized On/Off
Switch for gloved
hands



CAT NO	BS-510221	BS-510304
MODEL	RIGHT ANGLE LED RECHARGEABLE	RIGHT ANGLE LED NON-RECHARGEABLE
BATTERY	Rechargeable Lithium-Ion Battery	(6) AA batteries
BATTERY LIFE	Up to 4 hours	Up to 17 hours
LUMENS	205 Lumens	220 Lumens
BEAM DISTANCE	477 m	490 m
WEIGHT	450 g	454 g

INTRINSICALLY SAFE:

The intrinsically safe certification on these lights gives you the absolute confidence to use the lights in the most hazardous environments without concern of any safety issues.



BS-16460



BS-09050

WORKSAFE LED ATEX, ZONE 0

CAT NO	LIGHT OUTPUT	DISTANCE	BATTERY TYPE	RUN TIME	WATERPROOF	WEIGHT
BS-16460	80 lumens	100 m	(2) D cell batteries	Up to 200 hours	Yes	130 g
BS-09050	90 lumens	165 m	(4) D cell batteries	Up to 150 hours	Yes	2.6 kg



BS-15460



BS-08050

WORKSAFE LED (INTRINSICALLY SAFE)

CAT NO	LIGHT OUTPUT	DISTANCE	BATTERY TYPE	RUN TIME	WATERPROOF	WEIGHT
BS-15460	80 lumens	100 m	(2) D cell batteries	Up to 200 hours	Yes	130 g
BS-08050	90 lumens	165 m	(4) D cell batteries	Up to 150 hours	Yes	2.6 kg



INDUSTRIAL LED

CAT NO	BS-11500
BATTERY	(2) D cell batteries
BATTERY LIFE	Up to 200 hours
LUMENS	60 Lumens
BEAM DISTANCE	75 m
WEIGHT	280 g

This flashlight is built to withstand grease and chemicals, along with being crush resistant and having an 'unbreakable' lens



LEDLENSER



LedLenser Hand Torches



MT18R

CAT NO	LENS-MT18
BATTERY	Rechargeable Lithium-Ion Battery
BATTERY LIFE	Min: 5h / Max: 96h
LUMENS	3000 Lumens
BEAM DISTANCE	540 m
WEIGHT	620 g



MT14

CAT NO	LENS-MT14
BATTERY	Rechargeable Lithium-Ion Battery
BATTERY LIFE	Min: 9h / Max: 192h
LUMENS	1000 Lumens
BEAM DISTANCE	320 m
WEIGHT	153 g

X21R

CAT NO	LENS-X21R
BATTERY	9.6V Rechargeable Ytrion Cell
BATTERY LIFE	Min: 2h / Max: 40h
LUMENS	5000 Lumens
BEAM DISTANCE	800 m
WEIGHT	1.315 kg



CAT NO	LENS-EX7R	LENS-EX7	LENS-IL7R	LENS-IL7
MODEL	EX7R	EX7	IL7R	IL7
BATTERY	Rechargeable Battery pack 3.7V	(3) AA batteries	Rechargeable Battery pack 3.7V	(3) AA batteries
BATTERY LIFE	Min: 10h / Max: 45h	Min: 16h / Max: 45h	Min: 6h / Max: 40h	Min: 7h / Max: 37h
LUMENS	220 Lumens	200 Lumens	360 Lumens	340 Lumens
SAFETY RATING	ATEX (Zone 0/20)	ATEX (Zone 0/20)	ATEX (Zone 2/22)	ATEX (Zone 2/22)
WEIGHT	228 g	232 g	228 g	232 g

LedLenser Head Torches



LENS-H14R.2



LENS-MH10



LENS-H7R.2



LENS-IH9R



LENS-IH11R



LENS-IH5R



LENS-ILH8 / LENS-EXH8

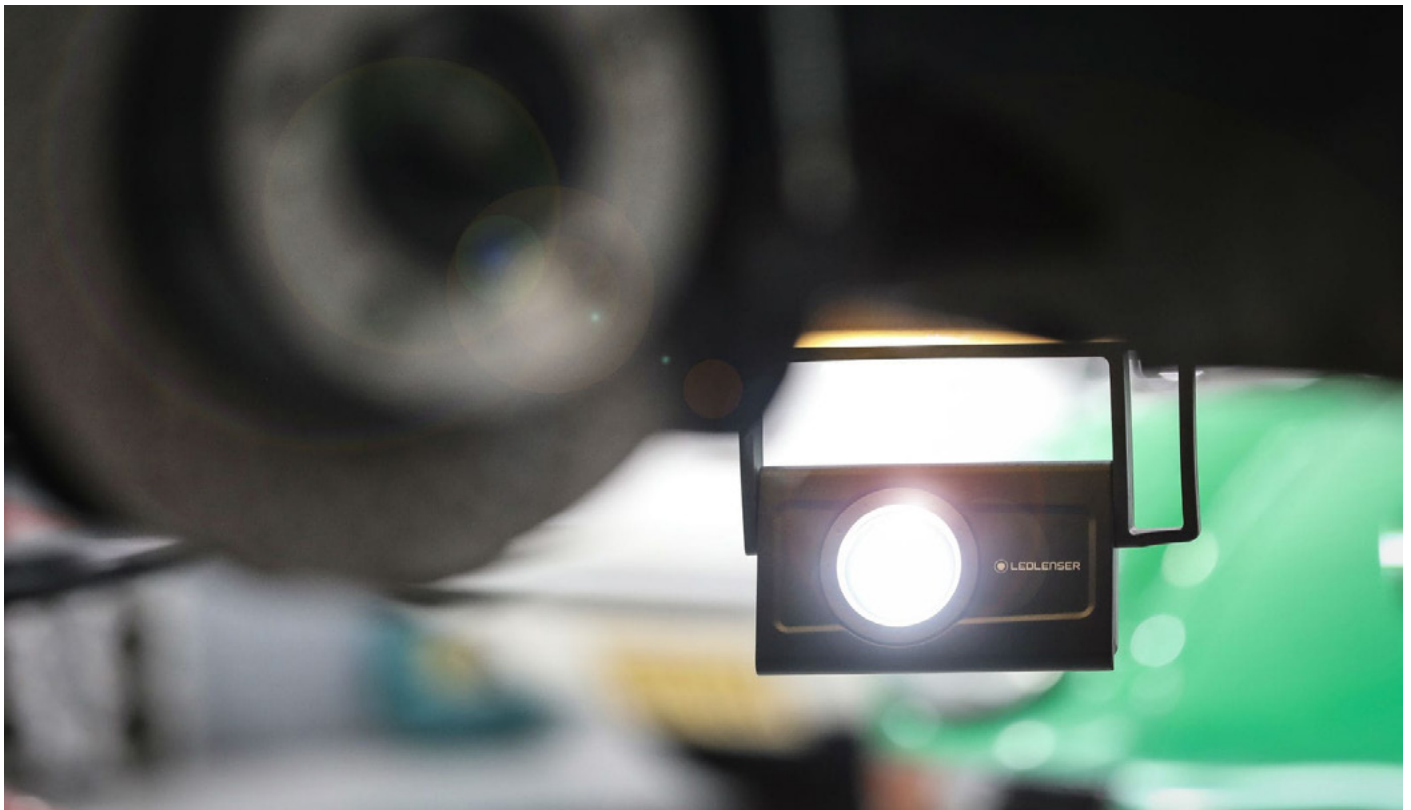


LENS-ILH8R / LENS-EXH8R

CAT NO	LIGHT OUTPUT	DISTANCE	SAFETY RATING	BATTERY TYPE	RUN TIME	WEIGHT
LENS-H14R.2	1000 lumens	300 m	-	Rechargeable Lithium-Ion Battery	Min: 6h / Max: 35h	340 g
LENS-H7R.2	300 lumens	160 m	-	Rechargeable Lithium-Ion Battery	Min: 4h / Max: 30h	164 g
LENS-MH10	600 lumens	150 m	-	Rechargeable Lithium-Ion Battery	Min: 10h / Max: 120h	158 g
LENS-IH5R	400 lumens	180 m	-	Rechargeable Lithium-Ion or (2) AA Batteries	Min: 40h / Max: 180h	98 g
LENS-IH9R	600 lumens	200 m	-	Rechargeable Lithium-Ion Battery	Min: 3.5h / Max: 40h	139 g
LENS-IH11R	1000 lumens	320 m	-	Rechargeable Lithium-Ion Battery	Min: 4h / Max: 100h	179 g
LENS-ILH8	280 lumens	80 m	ATEX	(3) AA Batteries	Min: 9h / Max: 38h	345 g
LENS-ILH8R	300 lumens	160 m	ATEX	Rechargeable Lithium-Ion Battery	Min: 7h / Max: 40h	342 g
LENS-EXH8	180 lumens	120 m	ATEX	(3) AA Alkaline 1.5V Batteries	Min: 15h / Max: 40h	345 g
LENS-EXH8R	200 lumens	130 m	ATEX	1 x 18650 Rechargeable Battery Pack 3.7v	Min: 10h / Max: 45h	342 g



CAT NO	LENS-IF4R	LENS-IF8R
MODEL	IF4R	IF8R
BATTERY	Rechargeable Lithium-Ion Battery	Rechargeable Lithium-Ion Battery
BATTERY LIFE	Min: 1.5h / Max: 15h	Min: 1.25h / Max: 12h
LUMENS	2500 Lumens	4500 Lumens
WEIGHT	1.06 kg	1.74 kg



flareTM

BE SEEN – BE SAFE



Safety beacons for the 21st century - Versatile, compact and practically indestructible Eflare LED flares and warning lights will see your workers through the darkest of nights. **Be seen, be safe** – Eflare safety beacons are visible from over 1 kilometre at night, so you can feel confident working in even the most challenging, low-visibility conditions. The Eflare beacons are available for a range of industries, Emergency Services, Rail, Utilities, Industrial, Aviation and Military.



CAT NO	AT290	AT700	AT800	AT280	TB10
MODEL	AT290	AT700	AT800	AT280	TB10R
LIGHT COLOUR	Blue	Blue	Blue	Blue	Red
CANDELA	Flash: 18 / Steady: 10	Flash: 18 / Steady: 10	Flash: 38 / Steady: 15	Flash: 18 / Steady: 10	Flash: 25
HEIGHT	200 mm	200 mm	220 mm	150 mm	130 mm
FLASH RATE	165-185 fpm	165-185 fpm	165-185 fpm	165-185 fpm	165-185 fpm
BATTERY	(4) AA Batteries	(2) D Cell Batteries	(2) D Cell Batteries	(4) AA Batteries	(1) AA Battery
BATTERY LIFE	20+ hours	40+ hours	25+ hours	20+ hours	25+ hours
WEIGHT	260 g	440 g	460 g	20 g	100 g

Eflares are available in range of colors and as kits, contact us for more information.





eFlare Rubber Base Mount
500-017



eFlare Aviation Base Mount
500-065



eFlare Cone Clip
500-037



eFlare Magnetic Base Cap
500-067



eFlare Floatation Collar & Lanyard
500-069 & 500-070



eFlare Magnetic Clip
500-059



eFlare Compact Magnetic Base Cap
500-161



eFlare Small Eflare Bag
500-048



eFlare Rail Base Mount
500-166



Collapsible Cone
LTC-4 (4 cones)
LTC-6 (6 cones)



Cone Light
QLED-A

SCANGRIP®

INNOVATION FROM DENMARK



TradeTuff / SCANGRIP Area Lights

SCANGRIP work lights are extremely durable and made to last. The entire product line is sturdy and endures the really demanding working environment which expose both the professional worker and their tools to rough, wet, and dirty conditions. The lights are covered by a high IP protection level to resist even outdoor use in all kinds of weather. Unique exchangeable rechargeable batteries are available for SPS range lights and offer a highly versatile and expandable run time.



Replaceable Battery



CAT NO	03.6000	03.6001	03.6002
MODEL	NOVA 4 SPS	NOVA 6 SPS	NOVA 10 SPS
BATTERY	Rechargeable Lithium-Ion Battery	Rechargeable Lithium-Ion Battery	Rechargeable Lithium-Ion Battery
BATTERY LIFE	Up to 15 hours	Up to 20 hours	Up to 10 hours
LUMENS	4000 Lumens	6000 Lumens	10000 Lumens
WEIGHT	1.97 kg	2.69 kg	3.6 kg



TUFF-T4000

CAT NO	T4000
BATTERY	4-in-1 Adapter accepts a variety of 18V battery platforms
BATTERY LIFE	Up to 16 hours
LUMENS	4000 Lumens
WEIGHT	3.11 kg



NOVA R

CAT NO	03.5439
BATTERY	Rechargeable Lithium-Ion Battery
BATTERY LIFE	Up to 10 hours
LUMENS	1500 Lumens
WEIGHT	705 g



Large Magnetic Bracket
03.5391



Scangrip Tripod
03.5431



Scaffolding Bracket
03.5341



90° Rotating Head Hand Torch
Lumens: 400, Batteries: AAA
ROTEO



Dual Bracket for Tripod
03.5308



GP PowerBank 5000mAh Red
MP05MA



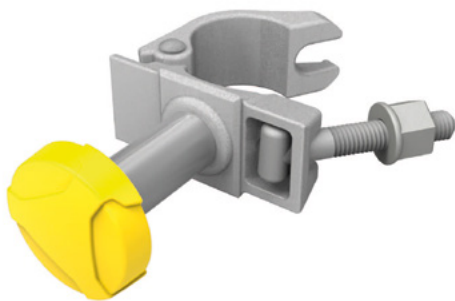
GP PowerBank 1000mAh Blue
MP10MA



GP PowerBank 15000mAh Grey
MP15MA



CAT NO	EX-VIEW	UNI-EX	MIDI-EX	NOVA-EX R
MODEL	NOVA 10 SPS	NOVA 4 SPS	NOVA 6 SPS	NOVA 10 SPS
BATTERY	Rechargeable Li-Ion Battery	Rechargeable Li-Ion Battery	Rechargeable Li-Ion Battery	Rechargeable Li-Ion Battery
BATTERY LIFE	Up to 3.5 hours	Up to 6 hours	Up to 5 hours	Up to 5 hours
LUMENS	200 Lumens	290 Lumens	280 Lumens	1500 Lumens



SCAFFOLDING BRACKET EX
03.5609



EX MAGNET BRACKET
03.5616



Designed for use on electrified railways for the purpose of demarcating residual electrical hazards and/or limits of isolation. This range of products carries full Network Rail Product Acceptance (PA05/06991) and can be used in multiple locations.

Each product has reflective signage carrying words "Danger Above" or "Danger Beyond". Other wording available with agreement from Professional Head of Contact Systems. An E-flare Beacon with Blue LEDs is attached to each sign which can be set to either flash or be continuously on.



OVERHEAD
DEMARICATION SIGN

Designed to be attached directly on to an overhead line using a snap on style earthing clamp (Catu) using approved operating rod. The sign and light has a swivel connection to allow free movement.

CAT NO	DESCRIPTION
NWR-DEM-OH-SIGN-EF-DA	Overhead Demarcation Sign (Danger Above)
NWR-DEM-OH-SIGN-EF-DB	Overhead Demarcation Sign (Danger Beyond)
NWR-DEM-VM-SIGN-EF-DA	Vertical Mount Demarcation Sign (Danger Above)
NWR-DEM-VM-SIGN-EF-DB	Vertical Mount Demarcation Sign (Danger Beyond)
NWR-DEM-CONE-SIGN-EF-DA	Cone Mounted Demarcation Sign (Danger Above)*
NWR-DEM-CONE-SIGN-EF-DB	Cone Mounted Demarcation Sign (Danger Beyond)*
PSC750BLUE	Blue/White Cone 750mm High, Weighted

AT700B

Eflare Blue Flash/Solid

*Cone purchased separately.



VERTICAL MOUNT
DEMARICATION SIGN

Can easily be mounted on to any metallic structure with magnets attached to the back of the sign.



CONE MOUNTED
DEMARICATION SIGN

Comes with a specially designed flexible skirt on the back of the sign which slips easily over the cone. Blue/White cone purchased separately.



EFLARE AT700B SAFETY BEACON

The AT700B Beacon is lightweight and easy to deploy. Visible at a distance of over 1km. The standard unit will last 63 hours at full strength, using standard D cell batteries, IP65 rated and is not affected by electromagnetic fields. The standard units have a flash rate of 0.9 flashes per second. They are intrinsically safe. The beacons are easily operated by rotating the lens in a clockwise direction to activate the switch and anti-clockwise to turn off. The units are designed to maintain constant peak brightness of its LEDs over the life of the batteries. A Low Battery Indicator will start to flash when it is time to change the batteries. The LBI will continue to flash with the other LEDs.



Horizon Utility Supplies Ltd
Unit 1, Windmill Business Park
Windmill Road
Clevedon
Somerset
BS21 6SR
United Kingdom

Tel: +44 (0)1275 342700
Email: enquiries@hor-i-zon.com

www.HorizonUtilitySupplies.com