



RAPID-eps®

TOTAL EDGE PROTECTION WITH EASE

LONDON UK



DOHA QATAR



MIAMI USA



A revolutionary edge protection system that's **quick & easy** to assemble

BS EN 13374:

2013

CLASS A & B

www.rapideps.com

Considerate Engineering

ZERO WASTE TO LANDFILL

A completely sustainable product which has been designed to meet the challenges and expectations of the construction today.

CONTENTS

Rapid EPS Ltd are constantly reviewing the aspects and impacts which could be placed on the environment by the activities associated with the manufacture of our construction safety products.

we employ the services of the United Register of Systems to conduct regular and stringent audits on the processes surrounding the manufacture of Rapid EPS products.

Environmental awareness is key to our success in delivering a sustainable product so

The annual audits ensure our manufacturing processes have minimum impact on the environment and the scope of our activities meet the requirements set down to achieve registration to ISO 14001:2004.

RECYCLE

The system will be constantly exposed to the harsh construction challenges of today so it is inevitable that eventually, after many uses, the components may become damaged and visually unacceptable.

This doesn't mean that the product is at the end of its life and that landfill is in sight!

The robust design of Rapid Fall Prevention Systems will ensure that extended product life is achieved with minimum impact on the environment.

The process of repairing and re-coating the components has minimum impact on the environment and ensures that the product has extended life, is visually acceptable and fully compliant for placing back into service for many years to come.

QUALITY

Along with our environmental targets, the overall quality of our product is at the forefront of our management processes.

The on-site performance and life expectancy of our products relies heavily on the design and manufacture of a robust and quality assured system and compromises are not made at Rapid EPS when striving to meet these expectations.

As such, the United Register of Systems undertake regular and stringent audits on the scope of our activities to ensure we meet the requirements set down to achieve registration to **ISO 9001: 2008**.

RE-USE

Rapid EPS products are all designed and manufactured with multiple re-use in mind.

The robust design and substantial coating ensures that the system can be constantly placed back into service.

On return from site, a full inspection of the product would take place which could possibly identify certain defects.

If defects are found, the design of the product ensures that with minimum repair and general refurbishment, the system would soon be serviced and placed back into stock for future use.

A fully compliant system offering many years of service.

Introduction	4
Distributors	6
Rapid Panel	8
Concrete Frame Solutions	10
Steel Frame Solutions	12
Timber Frame Solutions.....	14
Staircase Solutions	16
Elevator Protection	18
Free Standing & Demarcation	19
Trench Guard	20
Rapid-NET	22
Rapid Cast-In Wall Anchor	24
Formwork.....	25
Training.....	26
Technical Service & Support	27
Bespoke Fabrication.....	28
Client Testimonial.....	29
AnchorFast	30
Clients.....	31



A global success story

Providing technical support and system advice to leading contractors around the world.

All projects are supported by our Technical Team who offer a full detailing service to ensure potential issues are sorted out on the drawing board and not on site.

Founding Membership of the Industry recognised Edge Protection Federation provides the opportunity for **Rapid EPS** to keep in touch with the construction requirements and the challenges of tomorrow.

Fully tested solutions that meet and exceed all leading global safety standards.

Rapid EPS has a wealth of expertise in providing fall protection for the **concrete frame, steel frame and structural timber frame** industries and offers the most efficient edge protection system available to the construction Industry today.

Rapid EPS employs over forty people at our 32,000 sq ft manufacturing and training facility in Leeds, which is easily accessible from the M62 motorway.

Rapid EPS has many years of engineering experience dating back to 1968. In 2004 the company became involved in the manufacture of engineered solutions for the protection against falls from height.

Company founders David Brine and Peter Hewson combined their expertise to explore the possibility of designing a telescopic edge protection system known as **Rapid Post**.

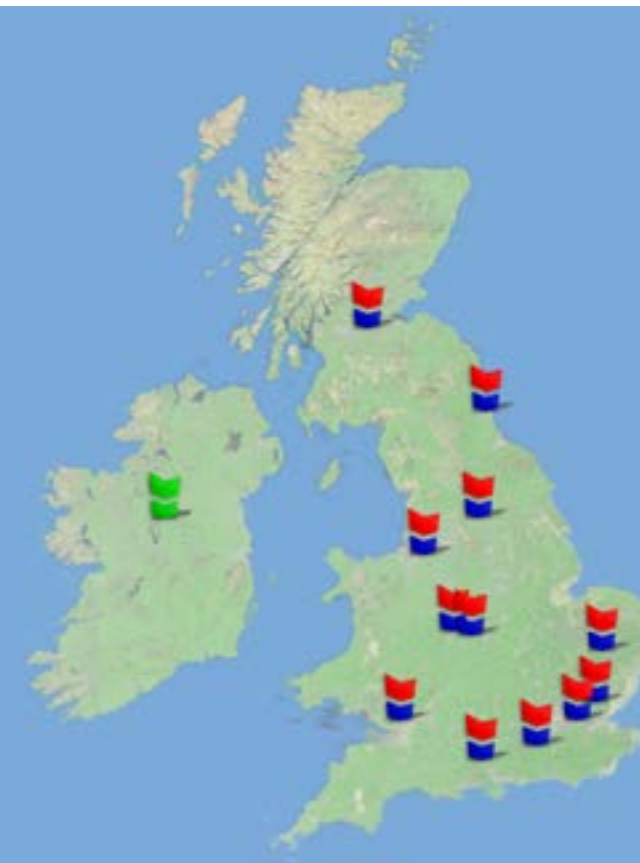
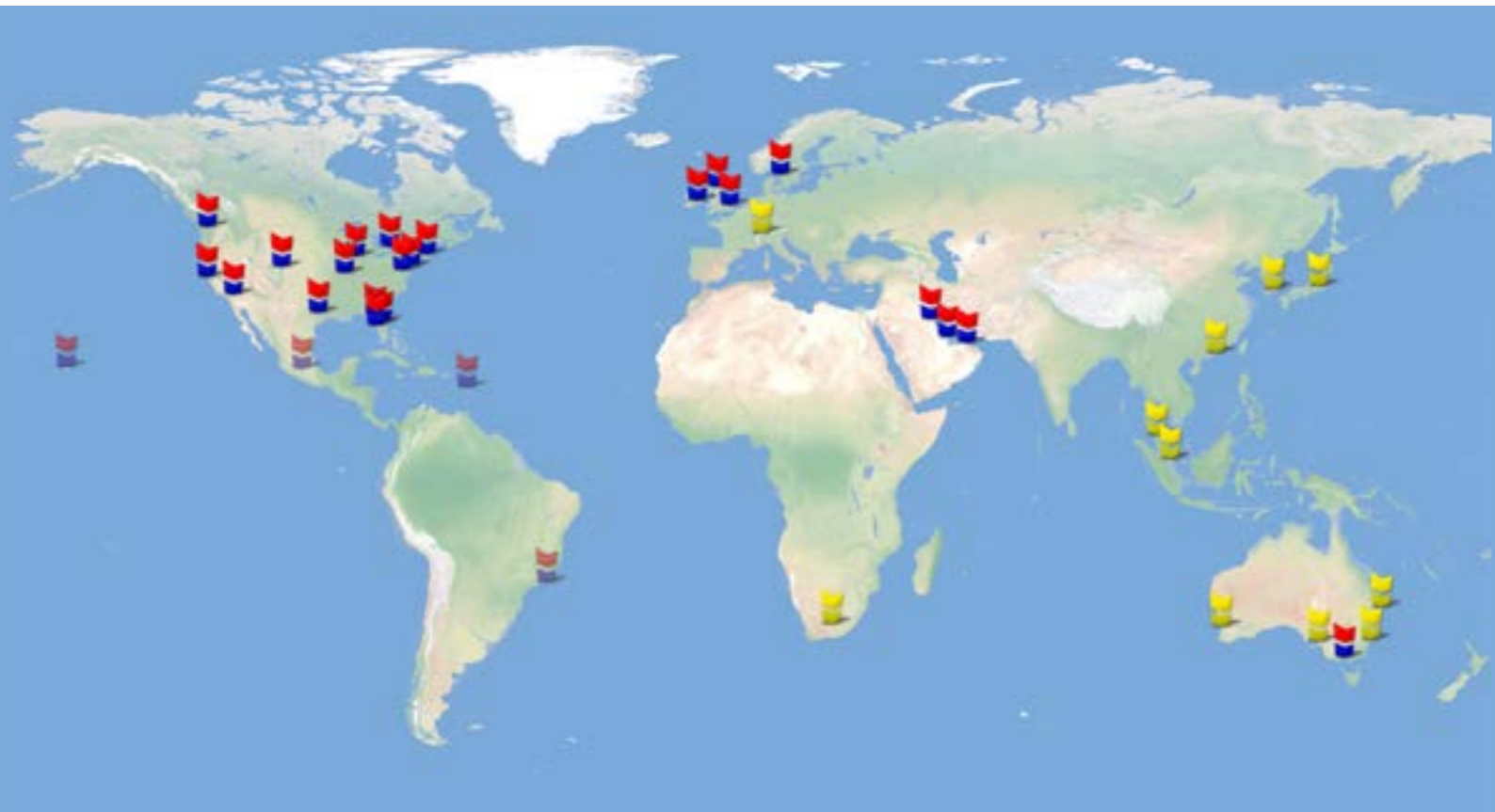
- 10 x faster than existing drill and fix systems
- No tools or drilling
- Minimal training required

The innovative **Rapid Post**, with its ease of installation and overall performance, has become the default solution for many companies around the world.

Expansion

Early in 2017, **Rapid EPS** started a factory expansion program due for completion by the end of the year, giving us a total of **52,000 sq ft** of production facilities including a new robotic panel production line.





BIRMINGHAM GROUND WORKS

Wartell Bank Ind Estate
West Midlands, DY6 7QQ
TEL: 01384 400 444

SHOTTS (Scotland)

Duntilland Road
North Lanarks, ML7 4NZ
TEL: 01698 870 200

WIDNES

Pitt Street
Cheshire, WA8 0TG
TEL: 0151 420 3331

GATESHEAD

Stoneygate Lane
Gateshead, NE10 0EX
TEL: 0191 469 7504

BIRMINGHAM

87-93 Amington Road
Birmingham, B25 8ET
TEL: 0121 706 0000

CARDIFF

Unit 7, Llandough Trad. Est.
Cardiff, CF11 8RR
TEL: 02920 709 046

BURY ST EDMUNDS

Thingoe Hill
Suffolk, IP32 6BE
TEL: 01284 724 824

BASILDON

Paragon Centre, Cranes Hill Rd.
Essex, SS14 3RY
TEL: 01268 727 112

GRAYS

Europa Business Park
Grays, Essex, RM20 4DB
TEL: 01708 861 821

BORDON

Prince Phillip Barracks, Budds Lane
Bordon, Hampshire, GU35 0HJ
TEL: 01794 884 876

WICKFORD (Head Office)

Churchill House
Essex, SS11 8YU
TEL: 01268 727 112



WORLDWIDE DISTRIBUTORS

The **Rapid-EPS** range of products has proven to be a success on an international level. Our products are available from:

Rapid-EPS America

- Seattle, WA
- San Francisco, CA
- Los Angeles, CA
- Denver, CO
- Austin, TX
- St. Louis, MO
- Chicago, IL
- Charlotte, NC
- Tampa, FL
- Jacksonville, FL
- Orlando, FL
- Baltimore, MD
- Philadelphia, PA
- Boston, MA

Impact Fence Rentals inc.

- Toronto, Canada
- RAPID-EPS (ME) DWC-LLC**
- Dubai, UAE
- Doha, Qatar
- Kuwait City, Kuwait
- Muscat, Oman
- RAPID-EPS Pty LTD**
- Melbourne, Australia



- Green Rock Ltd**
- County Longford, Ireland
- OSN Anleggsikring AS**
- Oslo, Norway
- Altrad Beaver 84**
- Essex, United Kingdom



COMING SOON

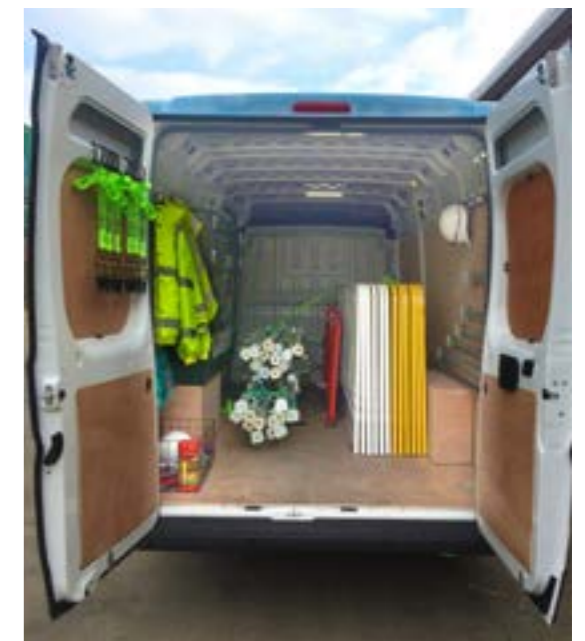
- Hawaii
- Caribbean
- Mexico
- Brazil



TARGET MARKETS FOR FUTURE EXPANSION

We are currently looking to introduce the **Rapid-EPS** range of products into more markets and would welcome interest from potential distributors from:

- Europe
- South Africa
- Malaysia
- Singapore
- South Korea
- Hong Kong
- Japan
- Sydney, Australia
- Brisbane, Australia
- Perth, Australia
- Adelaide, Australia



PRODUCT SUPPORT / DEMONSTRATION UNIT

We have recently put into service, our demonstration unit, a purpose built vehicle for site visits and equipment demonstrations.

RAPID PANEL

More than just a barrier

All Rapid EPS products are fully tested by Lloyds British test house and have been proven to meet and exceed the test requirements set out in **BS EN 13374:2013 for Class A and Class B**

With its robust design ensures that the system not only meets but exceeds all global safety standards with unrivalled fixing centres of 2.7m.

The Rapid Panel has been engineered with longevity in mind.



PRODUCT CODE **EU003**
 WEIGHT 21.5kg
 HEIGHT 1068mm
 LENGTH 2.9m
 INSTALLATION @2.7m ctr



PRODUCT CODE **EU005**
 WEIGHT 14.5kg
 HEIGHT 1068mm
 LENGTH 1.4m
 INSTALLATION @1.1m ctr



PRODUCT CODE **EU085**
 WEIGHT 9.5kg
 HEIGHT 1068mm
 LENGTH 655mm
 INSTALLATION @400mm ctr

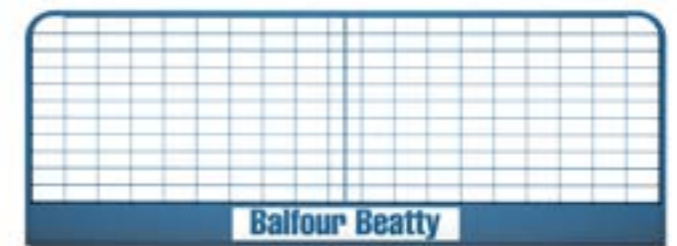


SYSTEM LOADING AVAILABLE ON REQUEST.



With the **RAPID Panel's** integrated toe-board, we can offer new branding opportunities at no extra cost.

- Any RAL colour
- Company logos

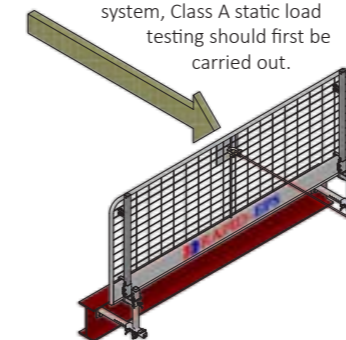


For added protection all new panels are shipped in purpose built stackable transportation aids and are shrink wrapped to ensure the product is in pristine condition on arrival.

Rapid E P S Ltd System Testing Class A & Class B

The standard for temporary edge protection systems is known as BS EN 13374: 2013 and clearly states how the tests should be carried out.

In order to meet the requirements for a Class B edge protection system, Class A static load testing should first be carried out.



Class A

The edge protection must resist a horizontal force of 0.3kN whilst maintaining elastic deflection within 55mm.

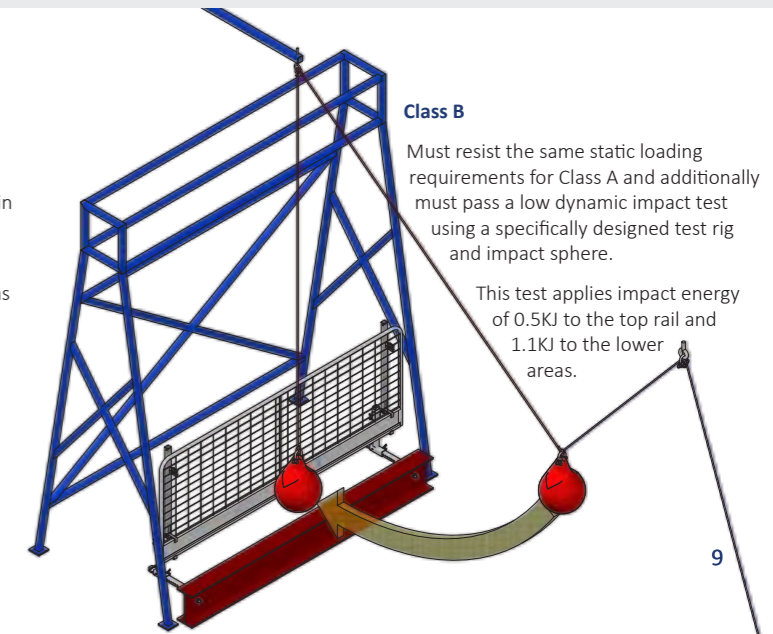
The top guardrail must also accept a vertical force of 1.25kN applied as an accidental loading.

The Rapid Edge Protection System has had numerous static loads applied up to four times this requirement.

Class B

Must resist the same static loading requirements for Class A and additionally must pass a low dynamic impact test using a specifically designed test rig and impact sphere.

This test applies impact energy of 0.5KJ to the top rail and 1.1KJ to the lower areas.



CONCRETE FRAME SOLUTIONS

Offering a whole new approach to working safely at height

The innovative **Rapid Post**, with its ease of installation and overall performance, has become a default safety solution for many companies around the world.

Rapid Post offers significant savings in time and labour.

RAPID POST

- Ten times faster than traditional drill and fix systems
- No tools required! No drill or fixings
- Minimal training required
- Fully compliant with BSEN 13374:2013 for Class A and B Protection
- No penetration of the concrete
- Compression mechanism guaranteed for two million cycles
- Safety device on post clearly indicates correct assembly
- Single, double or full height edge protection for total enclosure
- **Rapid Post** extends up to 3.4 metres
- Extend height by attaching **Rapid Clamps**

RAPID POST EXTRA

- Longer post extends up to 4.3 metres
- Exactly the same benefits as **Rapid Post**



EU020 – 1kg

RAPID CLAMP & RAPID LATCH

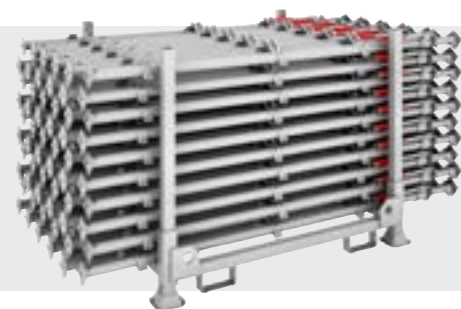
Add Rapid Clamps to **Rapid Post** for extended height or add Rapid Latches for full height edge protection.



EU021 – 1kg



EU001 – 12kg EU002 – 16kg



For added protection, all new **Rapid Posts** and ancillaries are shipped in purpose built stackable transportation aids and are shrink wrapped to ensure the product is in pristine condition on arrival.



ALTERNATIVES TO RAPID POST

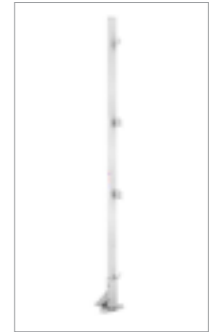
DUAL PURPOSE STAND

The **Dual Purpose Stand** has been fully tested and proven to exceed global safety standards for edge protection/Fall Prevention.

- Installed in just minutes with two anchor bolts
- Available in standard and dual height options
- 2.7m fixing centres
- Galvanised finish



EU007 – 6kg



NA007-EH – 12kg

CONCRETE SOCKET BASE

The concrete socket base can be installed on any concrete surface either at a pre-cast stage using inserts, or by drilling and installing at a later date.



EU010 – 1kg



EU106 – 1kg

SLAB GRAB

A fully tested solution where **Rapid Post** or drill and fix solutions are precluded.

- Adjustable height on floor slabs: 150mm- 760mm thickness
- Robust tensioning facility
- Install a safe working area in minutes



EU008 – 9kg

PARAPET BRACKET

A versatile solution for face mounting to most parapets.

Like all other **Rapid EPS** installations, the system can be installed at the unrivalled centres of 2.7m. With both vertical and horizontal adjustment, the solution lends itself to most challenges.



EU038 – 7kg

CURB GRAB

This simple but very robust solution uses the standard support post and has been tested to exceed global safety standards.

- Robust tensioning facility
- Adjustment range 150mm- 560mm
- Allows fixing to problematic areas including bridge work and parapets with upstands of up to 560mm



EU009 – 9kg

SYSTEM LOADING AVAILABLE ON REQUEST.

STEEL FRAME SOLUTIONS

We are a leading supplier of solutions for fixing to steel structures

STEEL STRUCTURES

Where conditions allow, the rapid edge protection system can be installed at ground level which significantly reduces exposure to the dangers of working at height.

Pre-indexing of the system ensures the barriers is suitable for all following works.

- The most efficient edge protection system available today with fixing centers tested to 2.7m
- Single or extended height edge protection for total enclosure
- Edge protection barriers in three sizes: full (2900mm), half (1400mm) and quarter (655mm)
- Barriers are incredibly light but robust, allowing edge protection for leading edge, internal voids and lift shafts
- Flexible components allowing simple indexing to suit variable slab detail

Rapid EPS's Steel Frame Solutions consist of 3 main components.

Webfix bracket: incremental indexing facility to cater for overhangs in excess of 900mm.

I-Beam clamp: Single fixing and able to be fitted to any hot rolled beam or column with horizontal clearance to cope with virtually all slab overhangs on un-drilled fabricated steel work.

Sacrificial sockets: Supplied by others, to work in conjunction with standard Steel Frame System.

WEB FIX

The most popular method of fixing to the steel frame is by utilising the versatile web fix bracket. The bracket offers a vertical and horizontal indexing facility and positioning of the fixing holes for the bracket would be modelled by our technical team by using the most up to date software packages.



EU042 – 10kg

Web Fix Extension Brackets increase the capabilities of the standard range of bracketary from 560mm, out to 1300mm.



EU092 – 3kg



EU093 – 2kg

SACRIFICIAL SOCKET

The **Sacrificial Socket** system is commonly used on steel frames and requires the steelwork contractor to weld the socket to the perimeter beam at centres specified by our technical team.

Utilising the steel frame support post and **Rapid Panel**, the installation can be carried out swiftly and safely at ground level.



I BEAM CLAMP

The solution is generally used for areas where web fix or sockets are not suitable or where edge protection requirements have not been considered at an earlier stage.

Again, utilising standard **Rapid Barrier Panels** and support posts, the system is fully compliant with global safety standards.



EU024 – 9kg

BOLT ON SOCKET

The **Bolt On Socket** system is commonly used on steel frames and requires the steelwork contractor to bolt the socket to the top of the perimeter beam at centres specified by our technical team.

Utilising the steel frame support post and **Rapid Panel**, the installation can be carried out swiftly and safely at ground level.



EU103 – 1kg

SYSTEM LOADING AVAILABLE ON REQUEST.



TIMBER FRAME SOLUTIONS

A revolution in CLT edge protection

TIMBER FRAME STRUCTURES

As with our Steel Frame solutions, where conditions allow, our timber frame solutions can be installed at ground level.

The system requires no secondary fix, the barrier is installed on the section using the standard structural timber equipment.

- The most efficient edge protection system on the market, offering the widest fixing centres at 2700mm, leading to fewer components and vastly reducing installation time
- Single or increased height edge protection for total enclosure
- Edge protection barriers in three sizes: full (2900mm), half (1400mm) and quarter (655mm)
- Barriers are incredibly light but robust, allowing edge protection for leading edge, internal voids and lift shafts



TIMBER SOCKET BASES

Surface fix only needs three or four fixings depending on which option you require.



EU010 – 1kg



ADAPTER FACE PLATE

Web fix bracket (with four fixings using face mounting plate) incremental indexing facility to cater for overhangs in excess of 900mm.



EU041 – 1kg

ADJUSTABLE FACE MOUNT BRACKETS

Face fix only requires five hecotopix screws (supplied by others)



EU043 – 1kg

DUAL PURPOSE STAND

Another proven solution which has been used by contractors around the world.

As with all **Rapid EPS** products, the **Dual Purpose Stand** has been fully tested and proven to exceed global safety standards for edge protection/Fall Prevention.

A highly visible and efficient solution with a galvanised finish, the **Dual Purpose Stand** requires installation by means of four heco-topix screws (supplied by others).

With 2.7m fixing centres, the versatile solution can be installed in minutes.



EU007 – 6kg

WIND LOADING & ENGINEERING CALCULATIONS AVAILABLE ON REQUEST

STAIRCASE SOLUTIONS

Offering protection to all configurations of stairs & stairwells

The innovative telescopic stair rail system with debris guard can provide fall protection to the most challenging areas.

With fail safe fittings, the solution can be installed quickly by means of drill and fix, threaded inserts, pre-cast sockets or clamping.



STAIR RAIL CONNECTOR BRACKET

The **Stair Rail Connector Bracket** can be quickly installed on any rapid post installed on a landing to provide handrails when speed is a necessity.

STAIR RAIL HANDRAILS

Handrails are available in eight different lengths from 280mm- 3000mm.



EU031 – 7kg

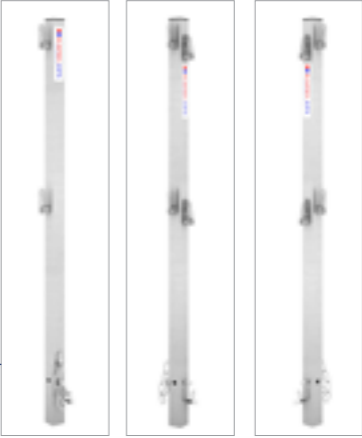


EU034 – 5kg

NEWEL POSTS

There are 3 stairwell posts to suit every eventuality.

The regular stairwell post has antiluce fitting on a single side and the right and left posts have fittings facing out at 90 degrees.



EU028
4kg

EU029
4kg

EU030
4kg

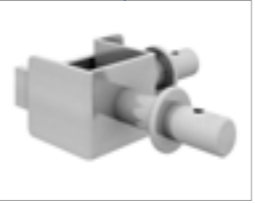
HANDRAILS

We have a selection of **Handrails** spanning from 280mm to 3 metres to cope with any configuration.

- SR0 EU034 – 1kg
- SR1 EU060 – 1kg
- SR2 EU072 – 1.5kg
- SR3 EU073 – 2kg
- SR4 EU074 – 2.5kg
- SR5 EU033 – 3kg
- SR6 EU061 – 5kg
- SR7 EU032 – 7kg
- SR8 EU062 – 11kg



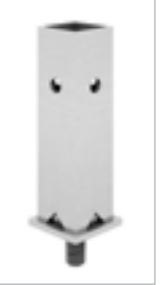
EU071 – 0.5kg



EU070 – 0.5kg

As an added feature, most of the **Rapid EPS** stair system can be upgraded with **Debris Guards**, which come with a range of supporting bracktery.

- DGL1 EU047 – 2.5kg
- DGL2 EU075 – 3kg
- DGL3 EU076 – 8kg
- DGL4 EU077 – 15kg
- DGS1 EU064 – 6kg
- DGS2 EU045 – 9kg



EU010 – 1kg

The **Concrete Socket Base** can be installed on any concrete stair, either at a precast stage using inserts, or by drilling and installing at a later date.

ELEVATOR PROTECTION

Offering a whole new approach to lift shaft safety

Unlike any other system available to the construction Industry, the unique **Rapid Lift Shaft Access Gate** offers protection to multiple core openings with just one **Rapid Lift Shaft Gate**.

The solution utilises light but extremely robust and user friendly components and features a secure key activated locking gate. Standard **Rapid EPS** components such as the innovative **Rapid Post and Panel** are utilised when completely securing the protected areas and with no need for any penetration of the working surface, multiple lift shaft protection is completed in just minutes.

As with all **Rapid EPS** components, the **Rapid Lift Shaft Gate** has been certificated by Lloyds British in line with BS EN 13374:2013.



EU040 – 33kg



Using standard **Rapid EPS** components, in conjunction with a **Rapid Elevator Gate**, a secure compound can be built to protect valuables and control access.



FREE STANDING & DEMARCATION

Standard **Rapid EPS** components can be deployed to assist with a number of site demands.

PEDESTRIAN SEGREGATION & DIRECTIONAL BARRIERS

Ensure your site visitors and operatives are safely directed away from potential hazard areas by utilising the simplistic pedestrian directional barrier solution.

Quick and easy to use, the solution can be installed in minutes by assembling just three standard components.



Example of a pedestrian route

DEMARCATIION

Utilising the same three free standing components, safe compounds for use as waste disposal or storage areas can be created in just minutes.



Example of a demarcation

CLASS "A" EDGE PROTECTION

Free standing countered weighted Rapid Edge Protection can be installed quickly and easily by attaching the purpose designed ballast bracket to the flexible **Hi-Vis Footplate**.

Free standing edge protection systems derive their support from weighted components fixed to additional supporting systems which can be positioned on flat surfaces within 2 metres of the edge of a fall area.



Example of a free standing edge protection

Like all **Rapid EPS** systems, the free standing solution has been tested at the unique 2.7m centres and has been proven to meet the requirements for a Class A system as laid down in the standard BS EN 13374: 2013.

FREE STANDING SOLUTIONS – FOOTPLATE

Utilising the **Hi-Vis Footplate** and **Standard Support Post**, free standing edge protection/Fall Prevention or demarcation can be swiftly installed.

For use as a compliant edge protection/Fall Prevention system, suitable ballast blocks would need to be secured to the HI-Vis Footplate.



EU035 – 3kg

FREE STANDING SOLUTIONS – BALLAST BRACKET

with the addition of the **Ballast Bracket** and some "off the shelf" ballast blocks, you can convert **Rapid EPS** freestanding demarcation into Class A Edge protection.



EU093 – 1kg

TRENCH GUARD

Protect work personnel from open excavations and falling debris

- Trenchguard conforms to the latest temporary edge protection Legislation OSHA 1926.502 and BS EN 13374
- Trenchguard has a built in toe board to prevent debris from falling onto operatives working below
- Fits all types of trench sheets and piles
- Lightweight for ease of use by site operatives and quick installation when used in conjunction with post and clamps



PRODUCT CODE **TG001**
WEIGHT 18kg
HEIGHT 1160mm
LENGTH 2705mm



PRODUCT CODE **TG001**
WEIGHT 16kg
HEIGHT 1160mm
LENGTH 2245mm



PRODUCT CODE **TG001**
WEIGHT 11.5kg
HEIGHT 1160mm
LENGTH 1780mm



PRODUCT CODE **TG001**
WEIGHT 12kg
HEIGHT 1160mm
LENGTH & WIDTH 775mm

TRENCHSHEET CLAMP

An adjustable clamp with a speed thread that is compatible with sheets up to 30mm.



TG002 – 4kg

TRENCHBOX CLAMP

An adjustable clamp with a speed thread that is compatible with box thickness up to 250mm.



TG003 – 5kg

TELESCOPIC BOX CLAMP

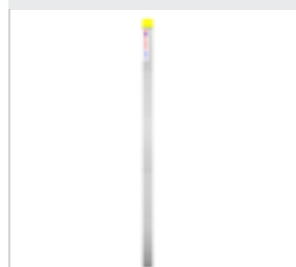
Adjustable with the aid of a telescopic section held with a rapid pin. It is compatible with boxes from 0mm to 200mm.



TG003 – 6kg

TRENCHGUARD POST

Galvanised steel tube 1220mm long with plastic end cap.



TG004 – 5kg



COLLAPSIBLE LADDER PLATFORM

- Manufactured from mild steel with powder coated finish
- Specially designed for backhoe type boxes and sheeted trenches
- Cantilevered platform enables safe side entry on to ladder
- Standard pole ladder fits directly onto the unit and locked in place by 2 ladder clamps
- Adjustable clamps fit directly onto a trench box or sheets (2 sheet clamps and 2 box clamps supplied with platform)
- Adjustable front legs for ease of levelling
- Collapsible sides and gate for ease of storage
- Weight 110kg



TG007 – 110kg

The extendable arm which supports the trench ladder can be moved from side to side to suit left or right handed installation.



RAPID-NET

The most robust and user friendly net system available today

Tested and proven to perform beyond double the requirements laid down in both British and EU standards.

The **Rapid-NET** utilises the Class B1 net and comes with 70 x 70mm mesh and 20mm x 20mm debris net overlay as standard, which has been proven to arrest 3 x falls of 100kg from a height of 7m, surpassing BSEN1263-1&2 (Safety Nets).

The elasticity of the net, together with a slight deformation of the frame, ensures that the impact of a fall is absorbed, considerably decreasing the risk of injury to the person falling. Items do not bounce out of the net as it is designed to catch.

The combined debris net overlay net which fully covers the fall arrest net, is able to catch considerably smaller particles of debris therefore protecting property and people at ground level.

We offer a full design service from quotation to detailing including full support throughout.

BENEFITS

- Tested with 3 x 100kg weight drops from 7m (Exceeding British Standard)
- Lloyd's certificate tested to 13524 joules
- Most robust system on the market
- No tower crane after 1st lift
- Electric hoist required for use by installer after first lift
- Fewer lifts up building
- Max. 14m from wet deck (See engineers below)
- Lifespan of **Rapid-Net** is 5 years
- Net Rated to 5.1kJ

SAVINGS

- Fewer lifts up the building
- Saving on labour/installation costs
- No use of site crane after first lift
- Extended life expectancy



The **Rapid-Net** holding 2 100kg weights, about to catch a 3rd.



Rapid-Net under loading – equivalent to 1 ton.



Copies of our full test report are available on request.



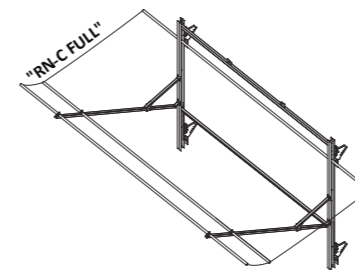
Rapid-Net holding a working 1100kg car

FALL ARREST & DEBRIS NET

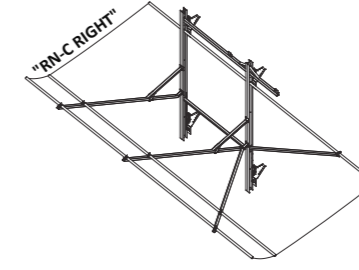
Rapid-NET is designed to fulfil all your debris net and fall arrest needs in one product.

The system has four variables which between them fully protect all your projects.

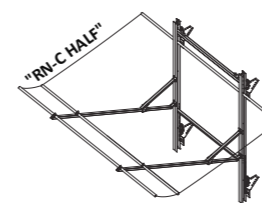
The **FULL** net
6.4m x 4.5m



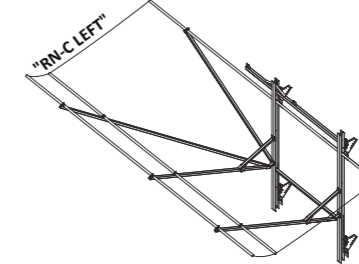
The **RIGHT CORNER** net
6.4m x 4.5m



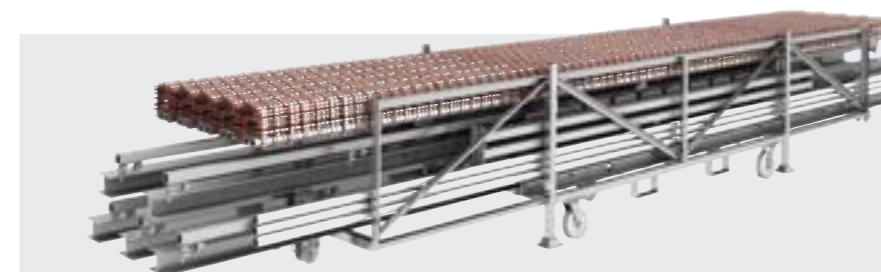
The **HALF** net
4m x 4.5m



The **LEFT CORNER** net
4m x 4.5m



Rapid-EPS offer the same full quoting and detailing service with our nets as we do with our edge protection products.



The specifically designed transportation aid for the **Rapid-Net** can hold up to 5 units and is stackable. With the wheels included fitted, it can be easily transported in containers or the wheels can be lifted to ensure a sturdy footing.

RAPID CAST-IN WALL ANCHOR PATENT PENDING

Ingenious solutions for on-site safety requirements

RAPID CAST-IN WALL ANCHOR

BENEFITS

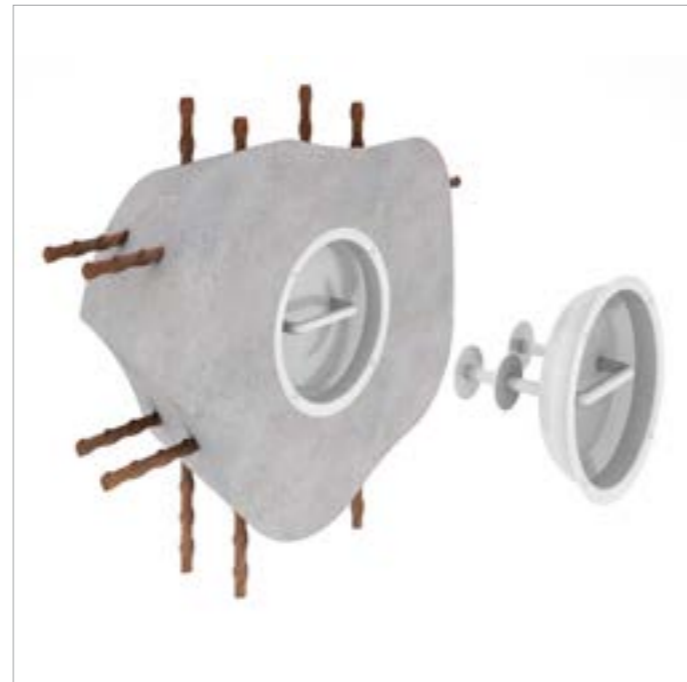
- Versatile – only one anchor required
- Higher load capacity of the **Rapid Cast-In Wall Anchor** means it can be used with horizontal cable for multiple anchorages, as well as for single worker hook-ups
- Eliminates the need to stock multiple types of products. Ensures the right product available when you need it
- Heavy duty
- All steel body is resistant to breakage
- Reduces the likelihood of injury due to unsafe practices

SAFER... PROVIDES MORE SECURITY

- **Rapid Cast-In Wall Anchor** can be positioned where you want it
- Reduces chance of unsafe installation.
- No slings, ladders or special requirements
- Workers can always be tethered without being put at risk
- Significantly stronger than tradition tether straps
- Designed to prevent abrasion, which increases the life expectancy of the operatives PFPE

FASTER... SAVES TIME

- Quick to install, no additional reinforcement or special placing requirements
- Simply nail or wire in-place at the desired location



PROVEN AND TESTED

Rapid Cast-In Wall Anchor conforms to ANSI and CSA Safety lanyard requirements for single person fall arrest as well as meeting local and national occupational health and safety codes for personal fall arrest.

HORIZONTAL CABLES

Caution must be exercised when the **Rapid Cast-In Wall Anchor** is used with horizontal cables due to the amplification of the horizontal load component at the point of attachment to the structure. Small angles of sag can impose large amplification of loads at the attachment points.

When the **Rapid Cast-In Wall Anchor** is used with horizontal cable applications, a professional engineer must approve the design and use prior to installation.



FORMWORK

Rapid EPS wetdeck equipment is for use on any type of formwork

The 1295mm High Fence Panel maintains safe height above concrete pour

Quick Connect System eliminates tie-wire

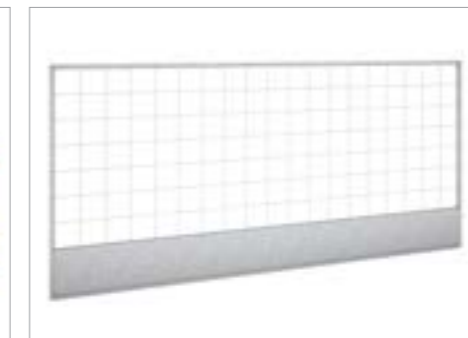
Our standard range includes brackets to fit onto most timber and aluminium formwork systems



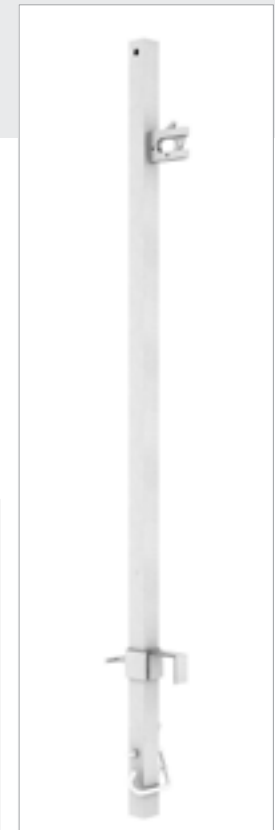
EU036 – 3kg



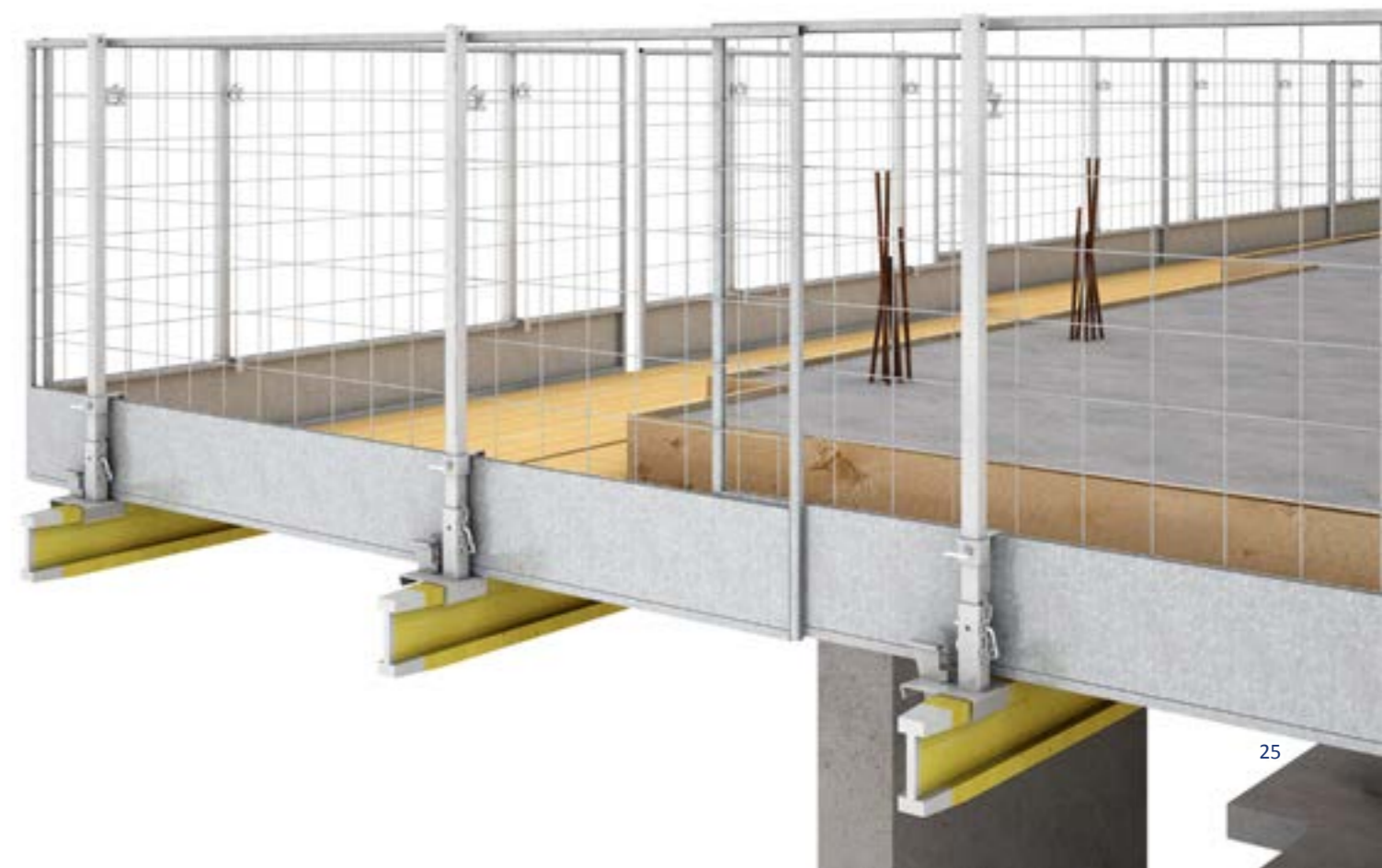
EU037 – 3kg



EU106 – 18kg



EU107 – 5kg



TRAINING

A 500 m² in-house industry approved training facility

With 500 square metres of demonstration, training area, and classroom, we believe we have all levels covered.

With **Concrete Frame**, **Steel Frame** and **Structural Timber Frame** models installed, we can ensure the industry standard for selection and use of temporary edge protection is fully understood by everyone.

At our recently up graded training centre in Leeds, Product training and training covering the standard for temporary edge protection systems, BS EN 13374 is available to all customers.

The level of training undertaken at the **Rapid Centre** will involve practical sessions including installation and hazard identification, and also a theory session.

All delegates will be required to complete the formal Edge Protection Federation test paper.

On completion of a successful test paper, the delegates will be issued with the **Edge Protection Federation Operative** card which will be valid for 5 years.



COURSE CONTENT

Tea and Coffee on Arrival
Introductions and Brief Overview of the Course

COMPANY OVERVIEW

Rapid EPS Company Overview and Memberships
Solutions Available
Project Management and Service Package

EDGE PROTECTION FEDERATION COURSE

Purpose of Course and Agenda
Regulations and Competence
Need for Fall Arrest/Restraint
The Standard for Temporary Edge Protection
All About BS EN 13374: 2013

APPLICATIONS

Equipment

Component Types
Hazards

DEMONSTRATION / PRACTICAL SESSION

Component Overview
Hazard Identification
Applications
Open Discussion and Q&A over Tea/Coffee
Written test paper



TECHNICAL SERVICE & SUPPORT

A Support Service to Equal the Quality of Our Products



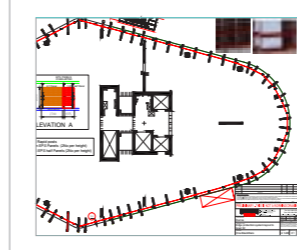
Using the most up to date detailing software available today, our dedicated Technical Advisors are on hand to ensure your project is in safe hands.

PROJECT MANAGEMENT

Offering expert advice from enquiry stage through to supplying the equipment, the Rapid Team are dedicated to sorting out potential fall prevention problems on the drawing board and not on site.

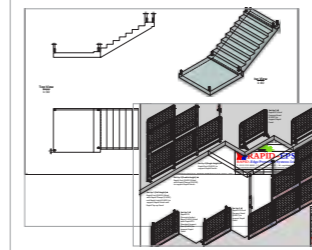
STEP 1 - ASSESSMENT

On receipt of drawings, the team will make assessments of the areas to be protected. This process acts as a working brief and ensures any potential problem areas are considered and discussed at the early stage of the enquiry. This assists in making sure the most suitable and efficient solution is supplied.



STEP 2 - QUOTATION

A quotation will be prepared with supporting outline drawings showing the assessment of the areas to be protected and the general quantity of perimeter edge protection required. This process offers the Client the opportunity to question the installation requirements and consider the overall project costs.



STEP 3 - DETAILING

On instruction to proceed, the Technical Team will produce the detailed requirements and final positioning of the fall prevention solutions. Supporting guidance and drawings can be supplied at this stage which will assist the installers with positioning the correct equipment in the correct area.



STEP 4 - SUPPLY

On instruction from the Client, the deliveries of equipment will be made to site in a phased manner and at a time to suit site activity. This ensures you are getting what you need and when you need it. Project management and site support is on hand from the start of your project until completion.

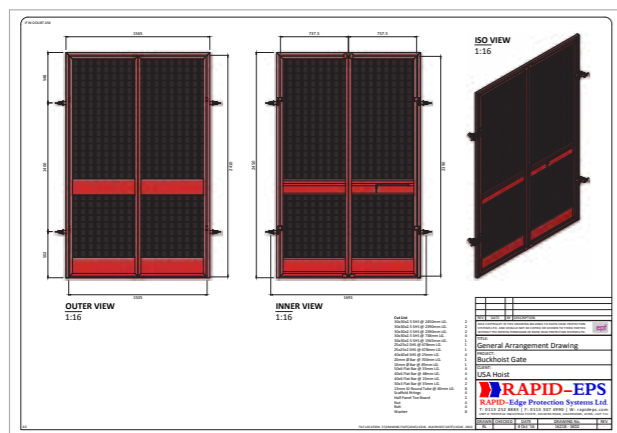


BESPOKE FABRICATION

In-house design, research, testing & development department

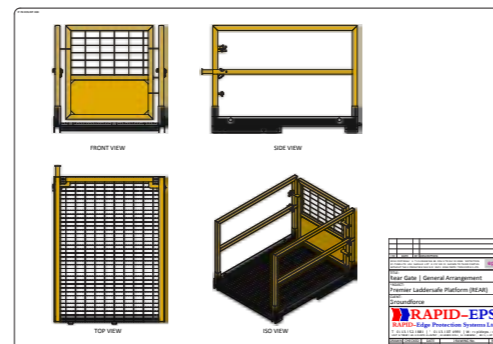
With an in-house R&D department and purpose built test facility, we are uniquely capable of designing all new products or working with your existing range of products to achieve quality solutions.

We are able to produce sketch concepts and fully operational prototypes, through to detailed fabrication drawings and product lines produced in large volume.



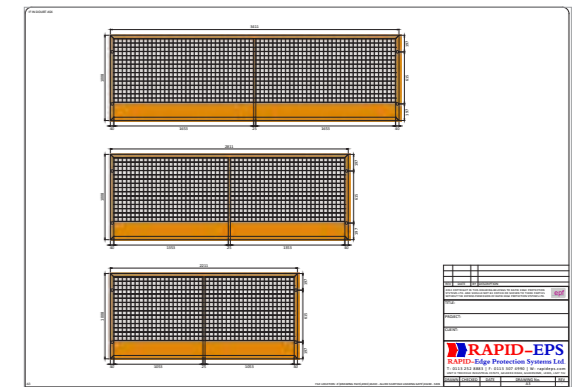
We can arrange site visits to establish specific and unique solutions to a variety of needs.

As we have the facility to fully test products to international standards at our headquarters, we can ensure your new product will perform as soon as it arrives on site.

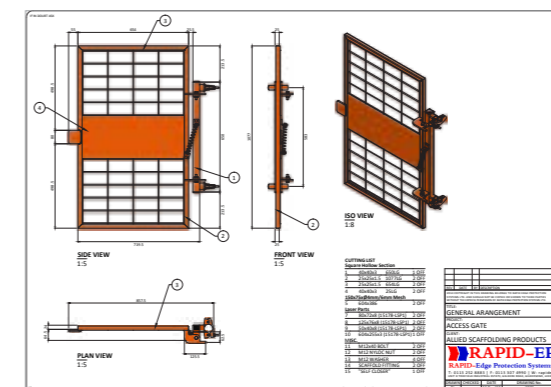


CLIENT TESTIMONIAL

“ Rapid EPS have made huge improvements to many of the products currently utilised in the scaffolding industry. I would recommend their ladder gates, trap doors and loading bay gates, and testify to the increased quality over what is currently available in the market. Their in-house design and engineering team are another benefit of using Rapid EPS when looking to fabricate a bespoke product.



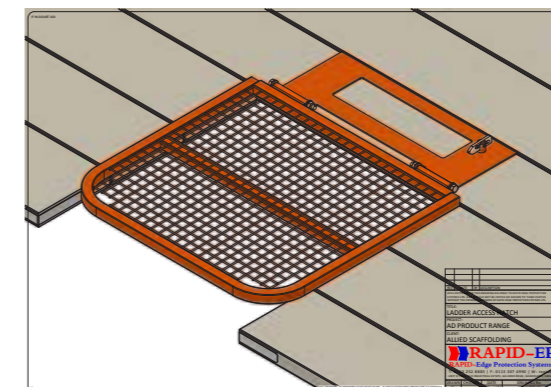
Loading Bay Gate Fabrication Drawings



Prototype Fabrication Drawings



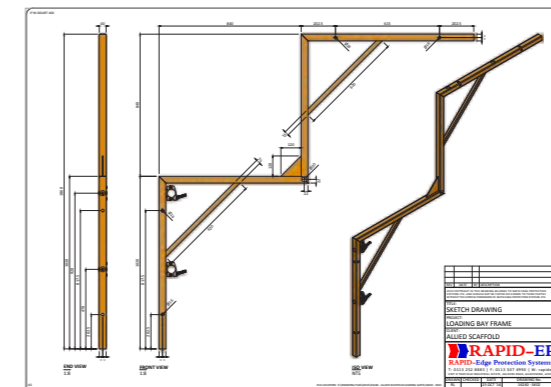
Complete Production Model



Initial Concept Sketch



Working Prototype



Loading Bay Gate Fabrication Drawings

Allied Scaffolding Limited would also recommend the Rapid Edge protection post and mesh panels as being the best such product that we have worked with. Many of our customers now insist on this product when specifying edge protection.

Pete Ferris

Director - Allied Developments

ANCHORFAST

A fall restraint solution for low frequency operations



ANCHORFAST

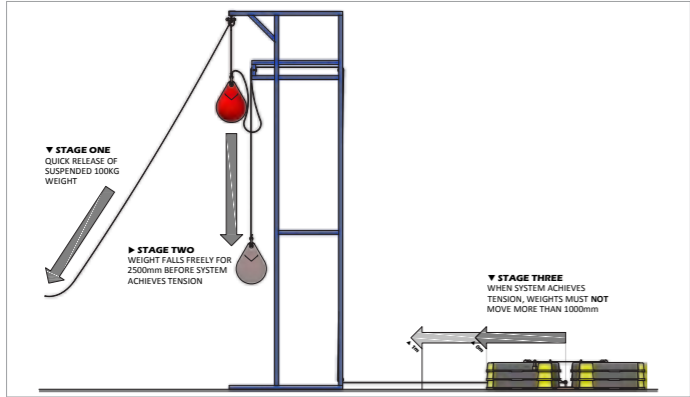
The mobile **AnchorFast** system has been specifically designed to provide short term safety measures for low frequency, work at height operations.

The **AnchorFast** system is ideal for short term operations where the use of collective perimeter edge protection cannot be used.

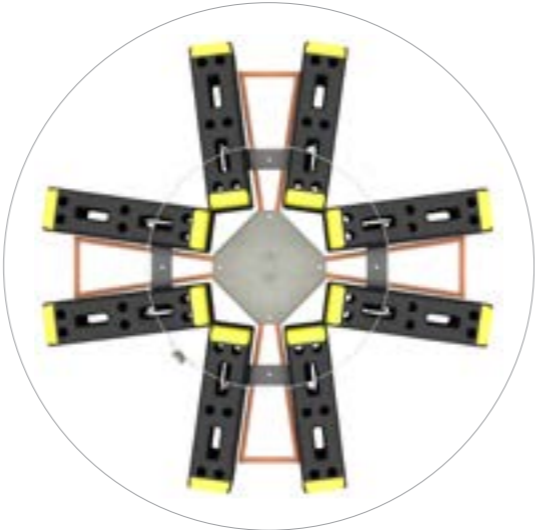
The modular **AnchorFast** system has been designed with ease of use in mind. The components are robust but easy to handle and simple to assemble which together offers rapid protection against the hazards associated with working at height.

RIGOROUS TESTING

The **AnchorFast** System has been extensively tested by LLOYDS British Testing Ltd to the guidelines set out in BS EN 795: 2012: Type E Protection against falls from a height – Anchor devices – Requirements and testing. The independent test documents are available upon request.



AnchorFast should be deployed in conjunction with site specific risk assessments and method statements.



Copies of our test certificates are available on request.

CLIENTS

Rapid EPS is proud to have worked with great clients around the world





TIMBER



STEEL



CONCRETE

Rapid EPS Limited
Unit D, Treefield Industrial Estate
Gelderd Road, Gildersome
Leeds LS27 7JU UK

Head Office: +44 (0)1132 528883