

TC 7054 Tower Crane

16 t

Load Capacity

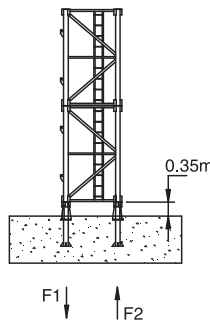
Jib Length	Radius (m)		3.75-18.0	23	25	30	35	40	45	50	55	60	65	70
	70m	Hoisting Load (t)	↕	16.00	12.30	11.20	8.90	7.34	6.16	5.26	4.55	3.95	3.48	3.07
↕			8.00						7.60	6.04	5.32	4.74	4.26	3.85
65m	Radius (m)		3.75-19.7	23	25	30	35	40	45	50	55	60	65	
	Hoisting Load (t)	↕	16.00	13.30	12.0	9.67	7.99	6.74	5.77	5.01	4.38	3.86	3.42	
		↕	8.00						7.52	6.55	5.78	5.16	4.64	4.20
60m	Radius (m)		3.75-20.5	23	25	30	35	40	45	50	55	60		
	Hoisting Load (t)	↕	16.00	14.0	12.7	10.2	8.44	7.14	6.13	5.32	4.67	4.12		
		↕	8.00						7.91	6.90	6.10	5.44	4.90	
55m	Radius (m)		3.75-21.3	23	25	30	35	40	45	50	55			
	Hoisting Load (t)	↕	16.00	14.6	13.3	10.7	8.85	7.49	6.44	5.60	4.92			
		↕	8.00						7.22	6.38	5.70			
50m	Radius (m)		3.75-22.2	25	30	35	40	45	50					
	Hoisting Load (t)	↕	16.00	13.9	12.0	9.41	7.89	6.80	5.92					
		↕	8.00						7.57	6.70				
45m	Radius (m)		3.75-23.7	25	30	35	40	45						
	Hoisting Load (t)	↕	16.00	15.10	12.2	10.10	8.60	7.42						
		↕	8.00											
40m	Radius (m)		3.75-24	25	30	35	40							
	Hoisting Load (t)	↕	16.00	15.3	12.3	10.3	8.72							
		↕	8.00											

Note : TC 7054 is also available with 60 FSH with 2.1T x 2.17 x 3 mtr MAST

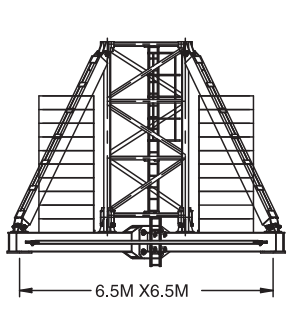
Specifications

Hoisting	No of Falls	↕	↕
	Speed (m/min)	0 ~ 37.5	0 ~ 75
	Hoisting Load (t)	8.0	3.0
	Power (kw)	55	55
Slewing	Speed(rpm)	0 ~ 0.8	
	Power(kw)	2 x 9	
Trolley	Speed(m/min)	0 ~ 58	
	Power(kw)	7.5	
Climbing	Speed(m/min)	0.5	
	Power(kw)	15	
Main Supply	415V / 50Hz		
Electric Power	80.5 kw (100.6kVA)		

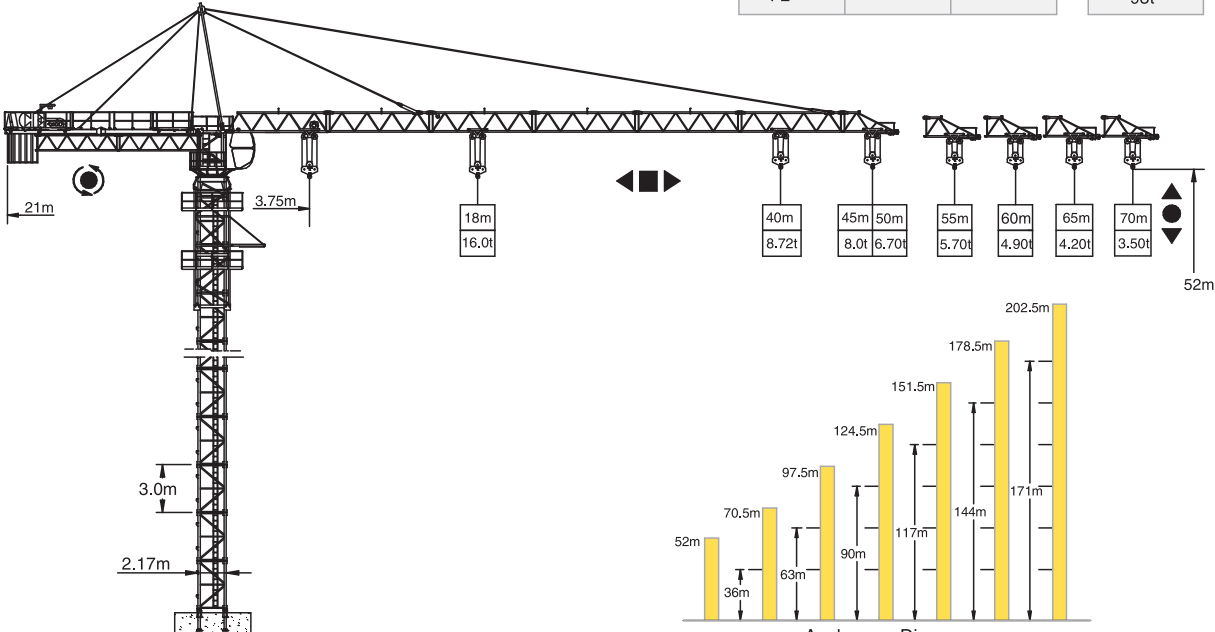
Outrigger Stationary



Chassis Stationary/Rail Mounted



F1	◇ 180t	△ 181t	⊕
F2	◇ 233t	△ 237t	93t



F Reaction ◇ In Service △ Out of Service ⊕ Dead weight without load and counter weights but with longest jib and free standing height.
P Vertical Load