

The Key

大宅

SELECT DELUXE HOMES

Spotlight:
One-of-a-sumptuous-kind
至尊之選

Feature:
Kitchens



LANDSCOPE

CHRISTIE'S
INTERNATIONAL REAL ESTATE

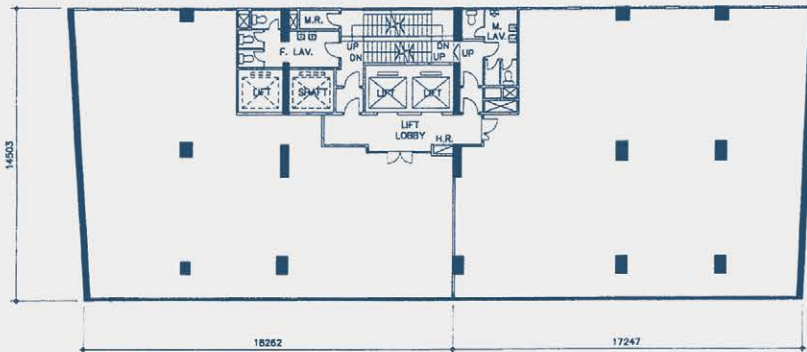
領域佳士得國際地產

Rare Office Floor For Sale in Core Central

中環核心罕有全層辦公樓出售



- **戰略據點**
中環恆生銀行總行側，跨中環港鐵數步之遙
- **地標名廈**
傲據CBD中區核心，交通便捷設施一應俱全
- **極罕全層**
實用率約7成，玻璃幕牆，中高層享城市景致



建築面積約7,303平方呎

Available For Sale by
Company Shares Transfer
可以公司轉讓股份形式買賣

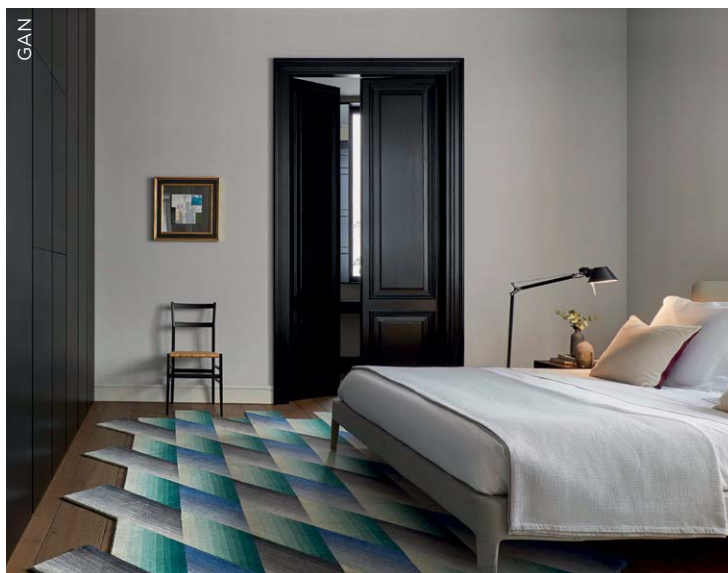
售價：
每呎HK\$2.3萬餘/P.S.F.

交吉及連部份現有
租約出售

Inquiries:
Mr. Lai

+852 9484 5501





MAKE A DIFFERENCE 與別不同

The floor is not something we update regularly in our home. Rather, a carefully chosen rug can do the trick to refresh the floor, lending the interior, whether it being the living room or bedroom, an extra character and comfort.

Just how can rugs make all the difference to a room's ambiance? Minimalist décor can be paired with a note of neutral colour and simple texture or graphic and geometric design that enlivens a space and creates a modern and layering effect. To add a sense of liveliness to the living room, you can opt for a colourful and patterned rug to create a statement piece for the interior.

Take an inspiration from the Mother Nature - bringing the outdoor inside with carpets that echo the beauty of nature in the form of ocean, mountain, waterfall, river, sand dunes, flowers and flora for a warm and elegant touch.

地板並不是我們會經常更換的家居產品，但假如細心地挑選一塊適合的地毯，便為地板帶來新點子，令室內家居，不論是客廳還是睡房，添上額外的特色和舒適感。

不同的地毯如何為家居締造不同的氛圍呢？簡約的家居設計配搭一張素色調和質感簡潔，以及圖案簡單和幾何圖形的地毯，讓室內空間添上現代氣息，卻又不失層次感。想為客廳增添活潑生氣，不妨考慮加添一張色彩絢麗和圖案豐富的地毯，成為全屋焦點。

想為室內注入有機色彩，可以選取靈感源自大自然的地毯，例如海洋、山巒、瀑布、河川、沙丘、花卉和植物等，將戶外元素帶進室內，營造溫暖和典雅的感覺。

04 SPECIAL FEATURE To greater heights

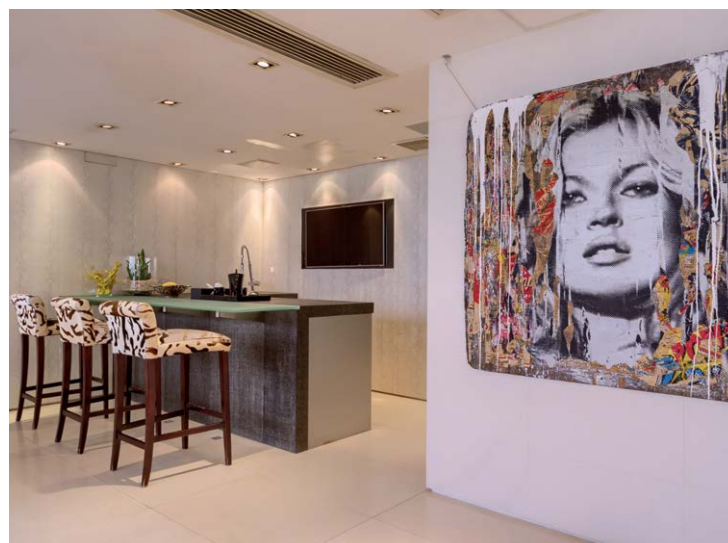
06 MONTHLY HIGHLIGHT Convention Plaza Apartments, Wan Chai 灣仔 會景閣

08 SPOTLIGHT One-of-a-sumptuous-kind 至尊之選

10 Southside & The Peak sale 南區及山頂 出售

14 HIGHLIGHT Eredine, The Peak 山頂 Eredine

16 Midlevels Central & West sale 中半山及西半山 出售



5 Easy ways to list your property with The Key :

5個簡單方法在《大宅》刊登您的出售 / 出租物業：

 2152 4818
  2866 0015 Fax
  6891 3639 Whatsapp
  info@landscape-christies.com
  www.landscape-christies.com/sell-to-let

The information, text, photos, analyses and projections contained herein are provided solely for the convenience of prospective clients and no warranty or representation as to their accuracy, correctness or completeness is made by Landscape Christie's International Real Estate, Landscape Surveyors Limited, Landscape Realty Limited or the owners, none of whom shall have any liability or obligation with respect thereto. Interested parties should rely on their own investigations, interpretations and analyses in connection with the purchase or letting thereof.

Information has been provided to us by sources deemed reliable, but no warranty or representation is made as to its accuracy, correctness or completeness. These offerings are made subject to contract, correction of errors, omissions, prior sale or lease, change of price or terms or withdrawal from the market without notice. The contents of The Key are for reference only and do not constitute all or any part of a contract. Copyright 2018 Each Office is Independently Owned and Operated

- 19 HIGHLIGHT**
Fontana Gardens,
Midlevels East
東半山 豪園

- 20** Midlevels East &
Happy Valley sale
東半山及跑馬地
出售

- 26 FEATURE**
Kitchens



- 30** Southside &
The Peak lease
南區及山頂 出租

- 34** Midlevels Central &
East lease
中半山及東半山 出租

- 36** U.K. Properties
英國物業

- 40** Japanese Properties
日本物業

Did you know



We list your homes as
videos online for **FREE**
on our page?

See it on Facebook at

[Landscape Christie's International Real Estate](#)



PUBLISHED AND DISTRIBUTED BY



Landscape Christie's International Real Estate C-018733
Tel: +852 2866 0022 Fax: +852 2866 0015
Email: info@landscape-christies.com
Website: www.landscape-christies.com
Address: Units 601-4, 6/F, Sino Plaza,
255-257 Gloucester Road, Causeway Bay, Hong Kong

DESIGNED BY

ARCHITECTURE | DESIGN | PEOPLE
PERSPECTIVE

Tel: +852 2525 0287 Fax: +852 2526 3860
Email: info@perspectiveglobal.com
Website: www.perspectiveglobal.com
Address: Unit B, 1/F Cheung Wah Industrial Building,
10-12 Shipyard Lane, Quarry Bay, Hong Kong

**SCAN HERE
TO SUBSCRIBE
ONLINE**





Boss Design Ltd.
www.boss-interiors.com.hk

design + build



📍 Shop 44, G/F, Homewrold, Site 12, Whampoa Garden, Hunghom, KLN.
☎️ +852-2345 6773 📠 +852-2345 6938 ✉️ info@boss-interiors.com.hk



REA INTERIOR DESIGN AWARDS 2018
REAGroup



To greater heights

Mountaintop residence Le Cap, at the pinnacle of Kau To Shan, offers ultra-luxurious exclusive penthouses and duplex apartments designed by renowned architect Pierre-Yves Rochon



Top of the hill: the unobstructed green view from the penthouse sky garden

Le Cap 灑瀚

83 Lai Ping Road, Sha Tin 沙田 麗坪路83號

Houses (29 units)

Saleable Area 1,724 - 3,285 s.f.

Apartments (40 units)

Saleable Area 1,597 - 2,214 s.f.

Website www.lecap.com.hk

Inquiries 2752 2288

A joint development by Wing Tai Properties and Manhattan Group, Le Cap is a secluded, low-density residential development on the top of Kau To Shan, in Sha Tin, inspired by understated luxury and lifestyle of the South of France. Overlooking Tolo Harbour in a setting of lush greenery, the property boasts a magnificent panorama stretching from Pat Sin Leng mountain range to Tai Po Kau Nature Reserve.

In his first deluxe residential project in Hong Kong, award-winning French architect and interior designer Pierre-Yves Rochon, acknowledged



TOP The dining and living rooms look out to the terrace; ABOVE LEFT The penthouse features a two-storey sky garden connecting the living room with the spacious terrace; ABOVE RIGHT The 6m-long round-cornered balcony links to the living room through folding French windows

by the *Financial Times* as the “master of grand luxe”, oversaw the design including architecture, interiors and furnishings, imbuing the 29 houses and four apartment blocks with a sense of timelessness.

Atop the apartment blocks, collectively named *Le Cristal*, are four penthouses and eight duplex apartments, all with unparalleled views. With exclusive two-storey sky gardens, formed by a linked 680 s.f. rooftop and a 350 s.f. terrace, the three-bedroom penthouses each features folding French windows that connect the living room with a 6m-long round-cornered balcony.

The two-storey duplexes have four bedrooms, a 4m-long balcony and, on the upper floor, a spacious master loft with private walk-in closet. Embraced by apparently limitless greenery, these apartments also feature stunning private sky gardens with panoramic views of Tai Po Kau Nature Reserve from their terraces and rooftops.

Rochon’s aesthetics are apparent throughout the apartments. Inspired by the art deco gardens of the South of France are details such as THG faucets, designed by Rochon, and handmade French crystal door handles.



Convention Plaza Apartments

會景閣

1 Harbour Road, Wan Chai

灣仔 港灣道一號

3 bed, 3 bath

Saleable 實用 2,235 s.f.

Sale 售 \$89,000,000

Inquiries 查詢

6188 1398 Josephine Yuen 阮小姐

Webpage No. 網頁編號 51273

Can be sold via company
shares transfer
可以公司轉讓股份形式買賣

Grandeur of class

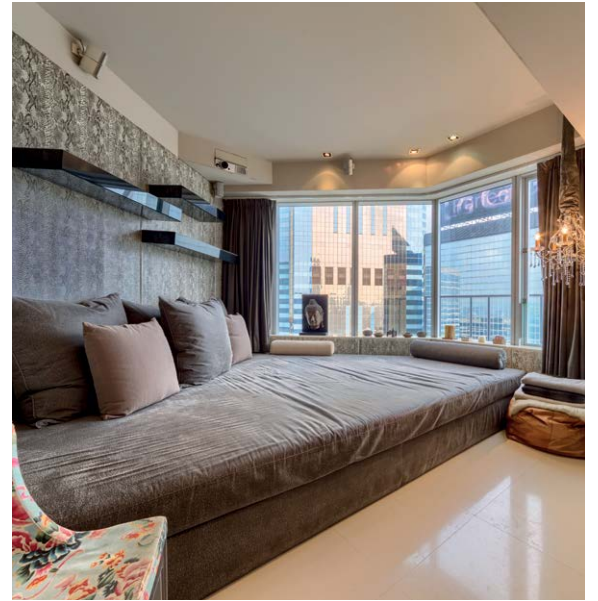
都會氣派

A harbour-front residential tower in the heart of the business area of Wan Chai, The Convention Plaza Apartments enjoys the convenience with excellent location - adjacent to the Hong Kong Convention and Exhibition Centre and Grand Hyatt Hotel. The MTR Shatin to Central Link is expected to open by 2021, which greatly enhance the accessibility of Convention Plaza Apartments.

This spacious apartment is tastefully designed with contemporary furniture and finishing with an inviting warm neutral tones of marble floors and walls. Spanning a saleable area of 2,235 s.f., the

apartment comprises three bedrooms (two ensembles), a combined living and dining room, three bathrooms and a mosaic-decorated powder room. With large windows spanning across the whole living and dining area, the flat lets in plenty of sunlight and offers stunning mountain view afar.

Vast space is evident in the master bedroom in particular. It boasts a large shower area with two shower heads and twin washbasins in addition to a sizable tub. The open plan kitchen also doubles as a bar area with a few bar stools, offering the perfect social area for the owner to mingle with guests. The apartment is on sale for HK\$89,000,000.



會景閣位於灣仔核心商業區，佔盡交通便利的優勢，毗鄰香港會議展覽中心及君悅酒店，是區內罕見的海傍豪華住宅。港鐵沙中綫連接中環的支綫預計於2021年通車，屆時來往會景閣的交通網絡更完善。

這個設計時尚的寬敞單位充滿當代氣息，配置富現代感的家具及裝飾，與暖色調的雲石地磚和牆身，打造出柔和的背景調子，別具一格。單位的實用面積達2,235平方呎，設有三間睡房，包括兩間套房、相連的客飯廳、三間浴室及一間鋪滿馬賽克的化妝間。偌大的窗戶由客廳伸延至飯廳，引入無盡天然採光外，亦可眺望延綿的山景。

主人睡房體現出單位的廣闊空間，浴室除有一個大浴缸和配備兩個獨立洗手盆，寬闊的淋浴間還安裝了兩個花灑頭。開放式廚房配備酒吧椅子，可充當酒吧區，是戶主與賓客把酒言歡的理想地方。單位現以8,900萬港元出售。



Greenland Court

中半山 恒翠園

56-58 Macdonnell Road

3 bed, 3.5 bath, 855 s.f. roof, 2 car parks

Tastefully decorated 3-bedroom apartment with private roof and open kitchen enjoying harbour view

品味裝修三房住宅，連私家天台及開放式廚房，飽覽維港美景

Saleable 實用 1,083 s.f.

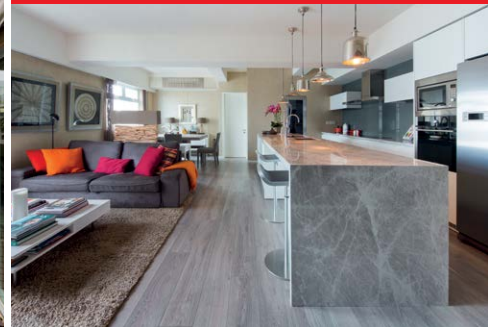
Sale 售 60,000,000

Inquiries 查詢 9319 0605 May Lee 李小姐

Webpage No. 網頁編號 135568



Can be sold via company shares transfer
可以公司轉讓股份形式買賣



Monticello

中半山 滿峰台

48 Kennedy Road

4 bed, 2.5 bath, 2 car parks

Unique combined unit in convenient location with open city view and lush green view

中半山相連住宅，設計別具匠心，坐擁開揚城市景及翠綠景

Saleable 實用 2,196 s.f.

Sale 售 \$60,000,000

Inquiries 查詢 9093 3381 Stephen Chan 陳先生

Webpage No. 網頁編號 113969



Villa Veneto

西半山 威都閣

3 Kotewall Road

4 bed, 3 bath, 2 car parks

Newly renovated 4-bedroom harbour view flat at quiet yet easy access location

全新裝修四房海景單位，地段恬靜，交通便利

Saleable 實用 2,320 s.f.

Sale 售 \$81,000,000

Inquiries 查詢 6188 1398 Josephine Yuen 阮小姐

Webpage No. 網頁編號 189086



Can be sold via company shares transfer
可以公司轉讓股份形式買賣



Springfield Gardens

壽臣山 春暉園

5-9 Shouson Hill Road West

4 bed, 3.5 bath, 2 car parks

Exclusive 4-bedroom townhouse with private pool in tranquil location

獨特四房洋房，連私家游泳池，地段寧靜

Saleable 實用 2,433 s.f.

Sale 售 \$168,000,000

Inquiries 查詢 9093 3381 Stephen Chan 陳先生

Webpage No. 網頁編號 99913



Convention Plaza Duplex

灣仔 會景閣複式

1 Harbour Road

4 bed, 3 bath

One of a kind duplex with tasteful decorations and stunning city view, close to future MTR Shatin to Central Link

品味裝修獨特複式住宅，飽覽城市美景，毗鄰未來港鐵沙中線

Saleable 實用 2,794 s.f.

Sale 售 \$138,000,000

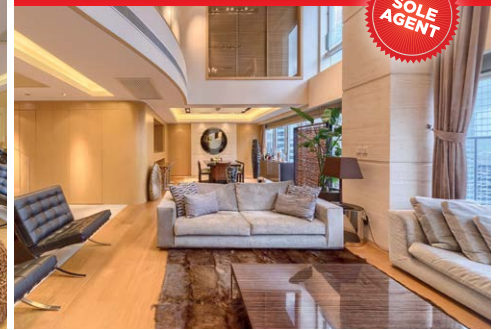
Inquiries 查詢 6188 1398 Josephine Yuen 阮小姐

Webpage No. 網頁編號 49762



Can be sold via company shares transfer
可以公司轉讓股份形式買賣

SOLE AGENT



Can be sold via company shares transfer
可以公司轉讓股份形式買賣



Detached House in Stanley

赤柱獨立屋

500 s.f. garden, 2 garages

Contemporary single garden house with private pool at secluded location

當代時尚獨立屋，連私家游泳池，地段隱逸寧靜

Saleable 實用 2,060 s.f.

Sale 售 ~~\$195,000,000~~ \$175,000,000

Inquiries 查詢 9871 6828 Louis Wong 黃先生

Webpage No. 網頁編號 180485



Villa Veneto

西半山 威都閣

3 Kotewall Road

6 bed, 3.5 bath, 2 car parks

Huge 6-bedroom penthouse duplex with harbour view and ample open space

偌大六房頂層複式單位，享海景，戶外空間充裕

Saleable 實用 4,057 s.f.

Sale 售 \$200,000,000

Inquiries 查詢 9871 6828 Louis Wong 黃先生

Webpage No. 網頁編號 39145



Can be sold via company shares transfer
可以公司轉讓股份形式買賣



Clear Water Bay Panoramic Sea View Detached House

清水灣無敵海景洋房

9 bed, garage (8 -10 car parks)

Two become one contemporary luxury house with huge garden and two private swimming pools

二合一當代奢華臨海居停，連偌大花園及兩個原則私家游泳池

Saleable 實用 7,416 s.f.

Sale 售 \$238,000,000

Inquiries 查詢 9484 5501 Mr. Lai 黎先生

Webpage No. 網頁編號 189569





Greenery Garden

薄扶林 怡林閣

2A Mount Davis Road

3 bed, 2 bath, 1 car park

Practical 3-bedroom apartment overlooking lush green and sea views with full facilities
實用三房單位，俯瞰翠綠景色及海景，設施完善

Saleable 實用 1,024 s.f.

Sale 售 \$18,500,000

Inquiries 查詢 9319 0605 May Lee 李小姐

Webpage No. 網頁編號 103323



Pacific View

大潭 浪琴園

38 Tai Tam Road

3 bed, 2 bath, 1 car park

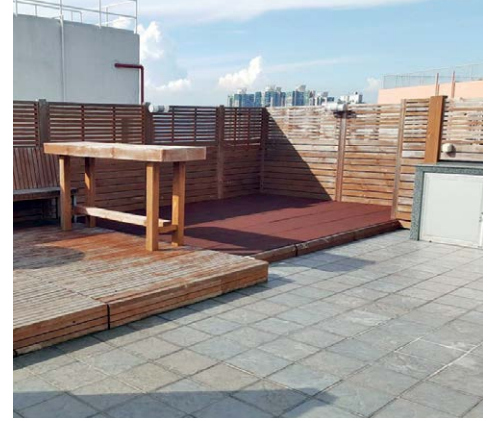
Bright and airy 3-bedroom apartment with balcony and facilities at Southside
光猛通風三房單位，連露台及設施，可租可售

Saleable 實用 1,397 s.f.

Sale 售 \$33,000,000 / Lease 租 \$68,000

Inquiries 查詢 9093 3381 Stephen Chan 陳先生

Webpage No. 網頁編號 31396



Y Y Mansion

薄扶林 裕仁大廈

96 Pok Fu Lam Road

5 bed, 3 bath,
1,754 s.f. roof, 2 car parks

Nicely decorated 5-bedroom penthouse with private roof terrace
雅致裝修五房頂層單位，連私家天台

Saleable 實用 2,046 s.f.

Sale 售 \$45,000,000

Inquiries 查詢 9648 6082 Christine Chong 莊小姐

Webpage No. 網頁編號 95525



Repulse Bay Garden

淺水灣 麗景園

18-40 Belleview Drive

3 bed, 2 bath, 1 car park

Bright and airy 3-bedroom flat sea view flat close to Repulse Bay Beach
光猛通風三房海景單位，毗鄰淺水灣泳灘

Saleable 實用 2,110 s.f.

Sale 售 \$61,800,000

Inquiries 查詢 9028 0147 Jenson Au 區先生



Can be sold via company shares transfer
可以公司轉讓股份形式買賣

Hong Kong Parkview

淺水灣 陽明山莊

88 Tai Tam Reservoir Road

3 bed, 3.5 bath, 1 car park

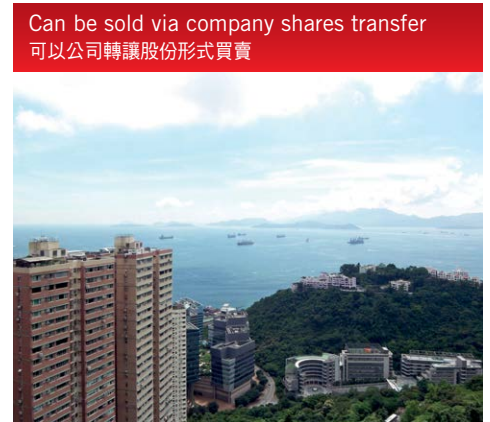
Spacious 3-ensuite apartment with comprehensive facilities in tranquil location
寬敞三套房單位，連完善會所設施，地段寧靜

Saleable 實用 2,069 s.f.

Sale 售 \$75,000,000

Inquiries 查詢 9028 0147 Jenson Au 區先生

Webpage No. 網頁編號 96736



Woodbury Court

薄扶林 嘉林閣

137 Pok Fu Lam Road

3 bed, 2 bath, 3 car parks

One of a kind 3-bedroom duplex apartment in tranquil location
三房複式住宅，別樹一幟，地段寧靜

Saleable 實用 2,549 s.f.

Sale 售 \$80,000,000

Inquiries 查詢 9803 2216 Annie Lee 李小姐

Grand Garden

淺水灣 華景園

61 South Bay Road

Unique combined unit with generous living area in serene and verdant location

獨特相連單位，空間寬敞倍大，位處翠綠寧靜地段

Saleable 實用 2,489 s.f.

Sale 售 \$86,000,000

Inquiries 查詢 9662 2199 David Lau 劉先生



Can be sold via company shares transfer
可以公司轉讓股份形式買賣



Grosvenor Place

淺水灣 淺水灣道117號

117 Repulse Bay Road

4 bed, 4 bath, 1 car park

Luxurious apartment at exclusive building enjoys full view of Repulse Bay Beach

淺水灣豪華住宅，飽覽淺水灣泳灘美景，可租可售

Saleable 實用 2,045 s.f.

Sale 售 \$100,000,000 / Lease 租 \$145,000

Inquiries 查詢 9319 0605 May Lee 李小姐

Webpage No. 網頁編號 104487



The Redhill Peninsula

大潭 紅山半島

18 Pak Pat Shan Road

4 bed, 4 bath, 1,610 s.f. garden, 2 car parks

Well maintained sea view townhouse with large garden and private carport

裝修簇新臨海洋房，連偌大花園及私家車庫，可租可售

Saleable 實用 2,765 s.f.

Sale 售 \$110,000,000 / Lease 租 \$140,000 (有匙引看)

Inquiries 查詢 6188 1398 Josephine Yuen 阮小姐

Webpage No. 網頁編號 172835



Acacia Villa

大嶼山 長沙上村60號

60 Cheung Sha Sheung Tsuen, Lantau Island

3 bed, 2 bath, 1 car park

Nicely decorated garden townhouse close to international school
雅致裝修花園洋房，鄰近國際學校

Saleable 實用 1,051 s.f.

Sale 售 \$18,500,000

Inquiries 查詢 9319 0605 May Lee 李小姐

Webpage No. 網頁編號 186782



Villa Rosa

大潭 玫瑰園

88 Red Hill Road

4 bed, 4.5 bath, 481 s.f. roof, 2 car parks

Excellent value hilltop garden house with breathtaking sea views

優質花園洋房，眺望壯麗海景

Saleable 實用 3,314 s.f.

Sale 售 \$120,000,000

Inquiries 查詢 9026 2912 Michelle Chung 鍾小姐

Webpage No. 網頁編號 107188



Can be sold via company shares transfer
可以公司轉讓股份形式買賣



Carolina Garden

山頂 嘉樂園

20-34 Coombe Road

4 bed, 2 bath, 1 car park

Sought after colonial style large apartment at lower Peak enjoys

Southside sea view

受歡迎英式偌大住宅，坐擁南區海景

Saleable 實用 2,448 s.f.

Sale 售 \$139,800,000

Inquiries 查詢 9648 6082 Christine Chong 莊小姐

Webpage No. 網頁編號 15672



Rosecliff

大潭 大潭道20號

20 Tai Tam Road

3 bed, 3.5 bath, 1,050 s.f. roof, 1 garage

Luxurious 4-bedroom townhouse with private garden and splendid

sea view

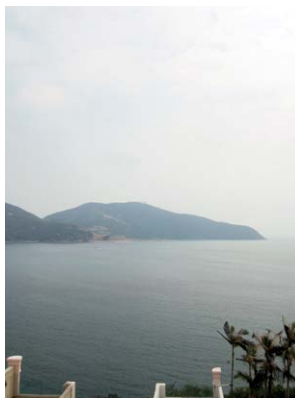
豪華四房洋房，連私家花園，享優美海景

Saleable 實用 3,209 s.f.

Sale 售 \$180,000,000

Inquiries 查詢 9026 2912 Michelle Chung 鍾小姐

Webpage No. 網頁編號 50071



Can be sold via company shares transfer
可以公司轉讓股份形式買賣



Can be sold via company shares transfer
可以公司轉讓股份形式買賣



Strawberry Hill

山頂 紅莓閣

8 Plunkett's Road

3 bed, 2.5 bath, 400 s.f. garden, 2 car parks

Colonial 3-bedroom townhouse in well managed estate at the Peak

英式三房洋房，位處山頂尊貴項目

Saleable 實用 2,945 s.f.

Sale 售 \$195,000,000

Inquiries 查詢 9093 3381 Stephen Chan 陳先生

Webpage No. 網頁編號 5733



The Redhill Peninsula

大潭 紅山半島

18 Pak Pat Shan Road

4 bed, 3.5 bath, 756 s.f. garden, 2 car parks

Bright and airy 4-bedroom townhouse with spacious layout and ample open space

光猛通風四房洋房，間隔寬敞，戶外空間充裕，可租可售

Saleable 實用 2,836 s.f.

Sale 售 \$75,000,000 / Lease 租 \$120,000

Inquiries 查詢 9648 6082 Christine Chong 莊小姐

Webpage No. 網頁編號 33832

**Manderly Garden**

深水灣 文禮苑

48 Deep Water Bay Road

4 bed, 3 bath, 1,000 s.f. roof, 2 car parks

Tastefully decorated 4-bedroom house with ample outdoor space at tranquil location

品味裝修四房洋房，戶外空間充裕，地段恬靜怡人

Saleable 實用 3,160 s.f.

Sale 售 \$218,000,000

Inquiries 查詢 6188 1398 Josephine Yuen 阮小姐

Panarama Terrace

淺水灣 蕙園

12 South Bay Road

4 bed, 3.5 bath, 1,000 s.f. garden, 2 car parks

Extravagant 4-bedroom townhouse with large garden in quiet enclave of Repulse Bay

奢華四房洋房，連偌大花園，位處寧靜地段，可租可售

Saleable 實用 3,229 s.f.

Sale 售 \$250,000,000 / Lease 租 \$200,000

Inquiries 查詢 9648 6082 Christine Chong 莊小姐

Webpage No. 網頁編號 4868

Can be sold via company shares transfer
可以公司轉讓股份形式買賣Can be sold via company shares transfer
可以公司轉讓股份形式買賣**Residence Bel-Air**

薄扶林 貝沙灣

1-18 Cyberport Road

4 bed, 4.5 bath, 3,023 s.f. garden, 1 garage (3 car parks)

Deluxe sea view garden townhouse in peaceful neighbourhood
豪華海景花園洋房，位處怡人寧靜社區，可租可售

Saleable 實用 3,953 s.f.

Sale 售 \$370,000,000 / Lease 租 \$400,000

Inquiries 查詢 9093 3381 Stephen Chan 陳先生

Webpage No. 網頁編號 189089



Repulse Bay Road

淺水灣道

4 bed, 5.5 bath, 280 s.f. garden, 2 car parks

Fantastic townhouse in luxury new decor and furnishing overlooking stunning sea view

淺水灣尊貴洋房，裝修奢華簇新，俯瞰優美海景，可租可售

Saleable 實用 2,821 s.f.

Sale 售 \$380,000,000 / **Lease** 租 \$400,000

Inquiries 查詢 6188 1398 Josephine Yuen 阮小姐



Barker Road

山頂 白加道

4 bed, 4.5 bath, 1,214 s.f. terrace, 2 car parks

Designer decorated extravagant house enjoys fantastic Victoria Harbour view

設計師裝修豪華洋房，坐擁迷人維港美景

Saleable 實用 5,706 s.f.

Sale 售 \$868,000,000

Inquiries 查詢 6188 1398 Josephine Yuen 阮小姐

Can be sold via company shares transfer
可以公司轉讓股份形式買賣



View from the top 居高臨下

Situated in Mount Kellett in the Southside of Hong Kong with a birds-eye view overlooking the Lamma Island, this mountaintop apartment at the Eredine is a rare find with four ensuites, complete with modern decoration. With a saleable area of 2,893 s.f., the flat comprises a combined living and dining room, a balcony, four-and-a-half bathrooms, two maid's rooms, a utility room and a covered car park. The internal upkeep of the abode is in excellent condition, plus stylishly furnished bathrooms and a fully fitted and equipped kitchen.

位於山頂加列山的豪宅項目Eredine，盡享港島南區一望無際的海景。這個山頂住宅可鳥瞰南丫島全景，矜罕珍貴，單位設有四間套房，並採當代風格裝潢。單位實用面積為2,893平方呎，實用率高，設有相連的客飯廳、露台、四間半睡房、兩間家傭房、一間多用途房及一個有蓋車位。單位內部裝修及保養良好，浴室裝潢時尚，廚房設備齊全。

Eredine

38 Mount Kellett Road, The Peak

山頂 加列山道38號

4 bed, 4.5 bath, 1 car park

Saleable 實用 2,893 s.f.

Sale 售 \$125,000,000

Inquiries 查詢 9093 3381 Stephen Chan 陳先生

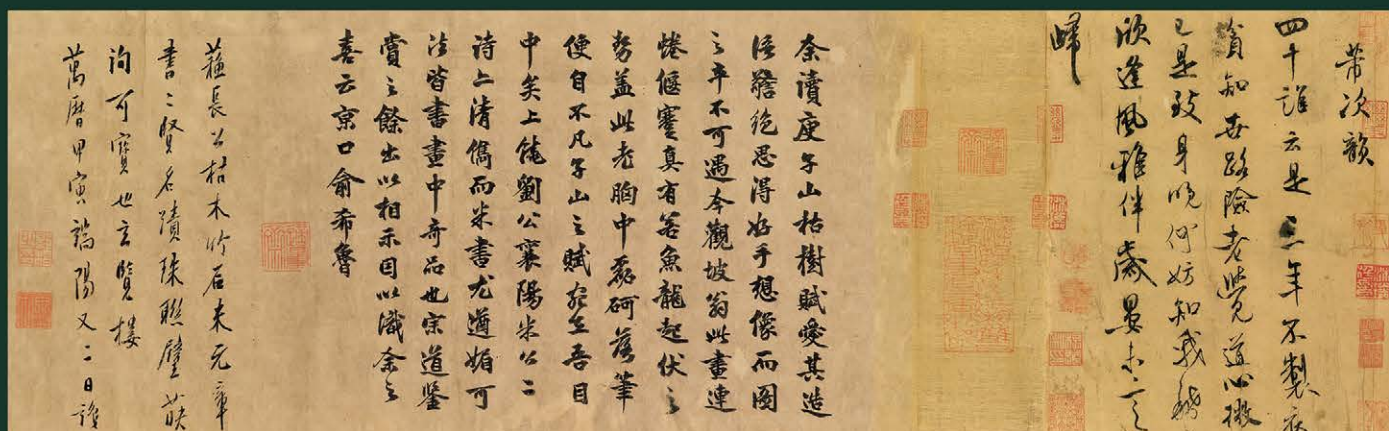
Webpage No. 網頁編號 23687



One of the rarest discoveries in Chinese art history

Wood and Rock

A work by Su Shi, the great literati master,
will lead Christie's Hong Kong Autumn Auctions 2018



Preview • 23–26 November 2018

Auction • 26 November • Hong Kong Convention and Exhibition Centre

Contact • infoasia@christies.com • +852 2760 1766

christies.com/SuShi

SU SHI (1037–1101)

Wood and Rock

Handscroll, ink on paper

Painting measures: 26.3 x 50 cm. (10 3/8 x 19 3/4 in.)

Colophons by Liu Liangzuo (11th century), Mi Fu (1051–1107),

Yu Xilu (1278–1368) and Guo Chang (1563–1622)

Estimate on Request



Hilltop

北角半山 峰景大廈
 60 Cloud View Road

3 bed, 2 bath, 1 car park

Bright and airy 3-bedroom spacious apartment in tranquil location

光猛通風三房單位，間隔寬敞，地段清幽恬靜

Saleable 實用 1,690 s.f.

Sale 售 \$37,000,000

Inquiries 查詢 9803 2216 Annie Lee 李小姐

Webpage No. 網頁編號 108385



Can be sold via company shares transfer
 可以公司轉讓股份形式買賣



Tregunter Tower 1

中半山 地利根德閣 1座
 14 Tregunter Path

4 bed, 2.5 bath, 1 car park

Large 4-bedroom apartment with balcony and full clubhouse facilities at Midlevels Central

偌大四房單位，連露台，會所設施完善

Saleable 實用 2,330 s.f.

Sale 售 \$53,000,000

Inquiries 查詢 9803 2216 Annie Lee 李小姐

Webpage No. 網頁編號 49065



Can be sold via company shares transfer
 可以公司轉讓股份形式買賣



Hong Kong Garden

西半山 香港花園
 8 Seymour Road

3 bed, 3 bath, 2 car parks

Spacious and practical 3-bedroom flat with open city view in great condition

寬敞實用三房單位，享開揚城市景，裝修簇新

Saleable 實用 1,991 s.f.

Sale 售 \$56,800,000

Inquiries 查詢 9803 2216 Annie Lee 李小姐

Webpage No. 網頁編號 180665



Hong Villa

中半山 峰景花園
 12 Bowen Road

3 bed, 2 bath, 1 car park

Nicely fitted and equipped apartment in tree-lined neighbourhood

雅致裝修住宅，位處綠樹成蔭地段

Saleable 實用 1,579 s.f.

Sale 售 \$66,000,000

Inquiries 查詢 9028 0147 Jenson Au 區先生

Webpage No. 網頁編號 6942



Can be sold via company shares transfer
 可以公司轉讓股份形式買賣



Tregunter Tower 1

中半山 地利根德閣 1座
 14 Tregunter Path

4 bed, 2.5 bath, 1 car park

Luxurious apartment with balcony and top notch facilities

中半山豪華住宅連露台，享頂級會所設施，

可租可售

Saleable 實用 2,330 s.f.

Sale 售 \$69,000,000 / Lease 租 \$90,000

Inquiries 查詢 9319 0605 May Lee 李小姐

Webpage No. 網頁編號 169253



Can be sold via company shares transfer
 可以公司轉讓股份形式買賣



Tregunter Tower 3

中半山 地利根德閣3座
 14 Tregunter Path

4 bed, 2 bath, 1 car park

Sought after 4-bedroom apartment with glittering views of the city skyline

受歡迎四房住宅，眺望城市醉人景色

Saleable 實用 2,362 s.f.

Sale 售 \$69,880,000

Inquiries 查詢 9662 2199 David Lau 劉先生

Webpage No. 網頁編號 128986





Kenne Mansion

中半山 堅尼地台

20 Kennedy Road

3 bed, 3 bath, 1 car park

Rare colonial style mid-rise with balcony overlooking Hong Kong Park
罕有英式中密度單位，連露台，俯瞰香港公園

Saleable 實用 2,240 s.f.

Sale 售 \$70,000,000

Inquiries 查詢 9662 2199 David Lau 劉先生

Webpage No. 網頁編號 150605



1 Robinson Road

西半山 羅便臣道1號

4 bed, 3.5 bath, 1 car park

Unique 4-bedroom duplex with sweeping city view in prime location
獨特四房複式住宅，享遼闊城市景，地段優越

Saleable 實用 2,626 s.f.

Sale 售 \$76,000,000

Inquiries 查詢 9028 0147 Jenson Au 區先生

Webpage No. 網頁編號 17906



Cliffview Mansions

西半山 康苑

21-25 Conduit Road

4 bed, 3 bath, 2 car parks

Renovated spacious 4-bedroom apartment in convenient location
新裝修寬敞四房單位，交通便利

Saleable 實用 2,872 s.f.

Sale 售 \$78,600,000

Inquiries 查詢 9028 0147 Jenson Au 區先生

Webpage No. 網頁編號 31456



Borrett Mansions

中半山 寶德臺

8A-9B Borrett Road

4 bed, 3 bath, 1 car park

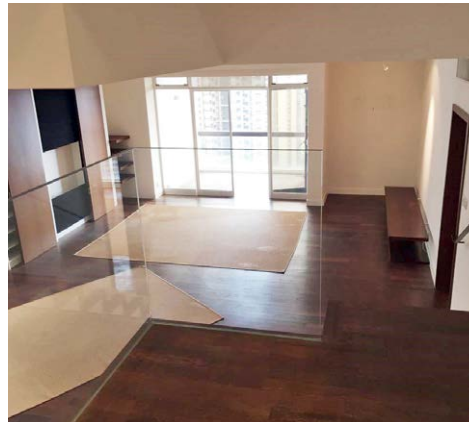
Large and spacious 4-bedroom (2-ensuite) apartment on high floor zone
高層四房單位(連兩套房)，空間偌大寬敞

Saleable 實用 2,448 s.f.

Sale 售 \$90,000,000

Inquiries 查詢 9011 5499 Yuky Chung 鍾小姐

Webpage No. 網頁編號 109405



May Tower 1

中半山 梅苑一座

7 May Road

3 bed, 2.5 bath, 1 car park

Nicely renovated and fitted triplex flat in prime location
雅致裝修三層複式單位，地段優越

Saleable 實用 2,252 s.f.

Sale 售 \$92,000,000

Inquiries 查詢 9662 2199 David Lau 劉先生

Webpage No. 網頁編號 45463



Kennedy Heights

中半山 堅麗閣

10-18 Kennedy Road

5 bed, 3 bath, 2 car parks

5-bedroom apartment with city view at convenient location
五房城市景住宅，交通便利，可租可售

Saleable 實用 2,929 s.f.

Sale 售 \$150,000,000 / Lease 租 \$145,000

Inquiries 查詢 9011 5499 Yuky Chung 鍾小姐

Webpage No. 網頁編號 130562



Garden Terrace 2 & 3

中半山 花園臺2 & 3座

8A Old Peak Road

4 bed, 4 bath, 2 car parks

Spacious 4-bedroom flat in sought after Midlevels area on fringe of CBD

寬敞四房住宅，位處半山尊貴地段，毗鄰市中心

Saleable 實用 2,580 s.f.

Sale 售 \$91,900,000

Inquiries 查詢 9803 2216 Annie Lee 李小姐

Webpage No. 網頁編號 24351



Dynasty Court

中半山 帝景園

23 Old Peak Road

4 bed, 2.5 bath, 2 car parks

Prestigious apartment with partial harbour view and comprehensive clubhouse facilities

中半山尊貴住宅，享部分海景，會所設施完善

Saleable 實用 2,141 s.f.

Sale 售 \$118,000,000

Inquiries 查詢 9011 5499 Yuky Chung 鍾小姐

Webpage No. 網頁編號 32928



Clovelly Court

中半山 嘉富麗苑

12 May Road

4 bed, 2.5 bath, 1 car park

Newly renovated 4-bedroom large flat in sought after family estate

全新裝修四房偌大單位，位處受歡迎家庭式住宅項目，可租可售

Saleable 實用 2,348 s.f.

Sale 售 \$128,000,000 / Lease 租 \$155,000

Inquiries 查詢 9011 5499 Yuky Chung 鍾小姐

Webpage No. 網頁編號 864



Grenville House

中半山 嘉慧園

1 & 3 Magazine Gap Road

4 bed, 3 bath, 1 car park

Generous 4-bedroom apartment with large balcony in prestigious development

偌大寬敞四房單位，連大露台，位處尊貴住宅項目

Saleable 實用 3,349 s.f.

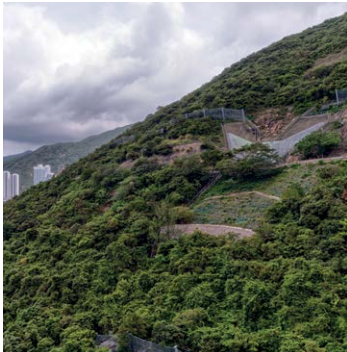
Sale 售 \$155,000,000

Inquiries 查詢 9803 2216 Annie Lee 李小姐

Webpage No. 網頁編號 36393



Can be sold via company shares transfer
可以公司轉讓股份形式買賣



Seclusion in the city 城市雅居

Beyond a long driveway and surrounded by graceful trees, this tastefully decorated 1,112 s.f. (saleable) apartment in Repulse Bay is tucked away midway along South Bay Road, in an upmarket residential area known for being a verdant, serene neighbourhood. Featuring pale hardwood floors and white walls, the designer-decorated interiors are stylish and modern. The apartment can enjoy perfect green and sea views and consists of two bedrooms (one ensuite), two bathrooms, a combined living and dining room, a balcony, a fully-equipped kitchen, a maid's room and one covered car park.

越過僻靜的馬路，被四周優美綠樹環抱，這裝修高雅的1,112平方呎單位，坐落於淺水灣南灣道中段，寧靜清幽的高尚住宅區內。經過設計師的精心佈置，全屋雅潔的白牆配上硬木地板，營造出時尚及現代的格調。住宅設有兩間寬敞的睡房，其中一間為套房、兩間浴室、相連客廳、一個露台、設備齊全的廚房、家傭房及一個有蓋車位。

South Bay Towers 南灣大廈
59 South Bay Road, Repulse Bay
淺水灣 南灣道59號

2 bed, 2 bath, 1 car park

Saleable 實用 1,112 s.f.

Sale 售 \$30,000,000

Inquiries 查詢 9871 6828 Louis Wong 黃先生

Webpage No. 網頁編號 126754



Classic beauty 古典奢華

Nestled in a quiet enclave off Tai Hang Road and in close proximity to Causeway Bay, Fontana Gardens is known for its spaciousness with a high efficiency ratio. Offering expansive city view, this colonial-style apartment is meticulously decorated with crown moldings across all rooms each highlighted with a lavish chandelier. With a saleable area of 2,690 s.f., it consists of four bedrooms with one ensuite, three bathrooms, separated living and dining room, a balcony, two maid's rooms and a covered car park. The kitchen and bathrooms are furnished with granite tops and the bathroom are equipped newly installed shower and shower doors.

豪園隱密於大坑道的幽靜地段，毗鄰銅鑼灣，往來市區交通便捷。物業以單位闊落及實用率高見稱，這個偌大單位眺望廣闊都市景色，並以殖民地色彩裝潢，每個房間和大廳均飾以皇宮式的風格及不同的水晶吊燈，散發華麗雅致的格調。單位設有四間睡房，其中一間為套房、三間浴室、獨立客廳、露台、兩間家傭房及一個有蓋車位。廚房及浴室均鋪設花崗石枱面，浴室更更換了全新的淋浴設備及趟門。

Fontana Garden 豪園
1-25 Ka Ning Path, Midlevels East 東半山 嘉寧徑1-25號

4 bed, 3 bath, 1 car park

Saleable 實用 2,690 s.f.

Sale 售 \$88,880,000

Inquiries 查詢 9648 6082 Christine Chong 莊小姐

Webpage No. 網頁編號 83498





Cavendish Heights

渣甸山 嘉雲臺

27-37 Perkins Road

3 bed, 2 bath, 1 car park

Practical 3-bedroom flat with balcony in popular family estate
實用三房單位，連露台，位處受歡迎家庭式住宅屋苑

Saleable 實用 1,337 s.f.

Sale 售 \$36,800,000

Inquiries 查詢 9028 0147 Jenson Au 區先生

Webpage No. 網頁編號 32696



Villa Monte Rosa

東半山 玫瑰新村

41A Stubbs Road

3 bed, 2 bath, 1 car park

Large and spacious flat with practical layout on high floor zone
偌大寬敞高層住宅，間隔實用

Saleable 實用 2,150 s.f.

Sale 售 \$53,500,000

Inquiries 查詢 9662 2199 David Lau 劉先生

Webpage No. 網頁編號 38444



Can be sold via company shares transfer
可以公司轉讓股份形式買賣



Valley View

東半山 欣景台

4A-4D Wong Nai Chung Gap Road

4 bed, 2 bath, 1 car park

Spacious 4-bedroom mid-rise apartment with large balcony in prime location
寬敞四房中密度單位，連偌大露台，地段優越

Saleable 實用 1,912 s.f.

Sale 售 \$56,000,000

Inquiries 查詢 9648 6082 Christine Chong 莊小姐

Webpage No. 網頁編號 98823



Bellevue Court

東半山 碧蕙園

41 Stubbs Road

3 bed, 3 bath, 1 car park

Rare on market apartment with practical layout in peaceful neighbourhood
東半山矜罕住宅，間隔實用，環境和諧恬靜

Saleable 實用 2,257 s.f.

Sale 售 \$60,000,000

Inquiries 查詢 9011 5499 Yuky Chung 鍾小姐

Webpage No. 網頁編號 20303



Fontana Gardens

東半山 豪園

1-25 Ka Ning Path

4 bed, 4 bath, 1 car park

Nicely decorated 4-bedroom large flat on fringe of Causeway Bay
雅致裝修四房單位，間隔偌大，毗鄰銅鑼灣

Saleable 實用 2,560 s.f.

Sale 售 \$79,000,000

Inquiries 查詢 9648 6082 Christine Chong 莊小姐

Webpage No. 網頁編號 122457



Can be sold via company shares transfer
可以公司轉讓股份形式買賣



Broadwood Park

東半山 柏樂苑

38 Broadwood Road

3 bed, 3 bath, 2 car parks

Tastefully decorated apartment in tranquil location with harbour view
品味裝修住宅，地段寧靜，坐擁優美海景

Saleable 實用 2,414 s.f.

Sale 售 \$95,000,000

Inquiries 查詢 9871 6828 Louis Wong 黃先生

Webpage No. 網頁編號 34728





Picturesque Scenery 美景如畫

Situated in a green and quiet corner of South Bay Road, Ruby Court enjoys unobstructed South Bay seaview and greenery mountain view. Spanning a saleable area of 1,390 s.f., these two premium apartments own efficient layout of dining area with fitted kitchen, three bedrooms including one ensuite, two bathrooms, powder room, maid's room and utility area respectively. Amid the well-appointed facilities, it only takes a few steps walking to the beach to enjoy sunbathing and barbecue. Enjoying such a convenient location, short driving distance can easily bring you to shops and entertainments in Repulse Bay, Stanley and Tai Tam. Residents' shuttle bus services to Central and Repulse Bay are available.

淺水灣嘉麟閣座落於茂綠寧靜的南灣道，享有清靜雅致的南灣海景及開揚山景。兩個優質單位的實用面積均為1,390平方呎，室內空間寬闊，由客廳的大玻璃窗可飽覽南灣怡人海景，飯廳及廚房間格實用，三間客房其中一間為套房、兩間浴室、客用化妝間、家傭房及工作間。不僅備有完善會所設施，數步之遙便可到泳灘享受日光浴及戶外燒烤樂，極之方便。駕車瞬間可達淺水灣，赤柱及大潭的商店及娛樂設施，住客更可享穿梭巴士服務往中環及淺水灣。



Ruby Court
淺水灣 嘉麟閣
55 South Bay Road

3 bed, 2.5 bath, 1 car park

Saleable 實用 1,390 s.f.

Sale 售 Open Offer

Inquiries 查詢

Louis Wong 黃先生 9871 6828

Yuky Chung 鍾小姐 9011 5499



Top-notch lifestyle

出類拔萃

Amidst the hustle and bustle cosmopolitan in Hong Kong, you will live rejoicing every day if you explore a quiet and subtle home sweet home.

Perched on Black's Link at Deep Water Bay, sitting on the living room and overlooking the stunning views of Deep Water Bay golf club, the secluded beach and rolling hills are the most relaxed activities in this newly renovated house which offers exclusive privacy. What's more? Do planting and growing your own art garden that gives you pleasure and satisfaction!

Spanning a spacious saleable area of 4,780 s.f., this luxurious house is highly accessible to connect every living space with a private lift. You only take a few steps walking to swimming pool and tennis court to enjoy your leisure time, not to forget the picturesque views!

The sumptuous house boasts five massive bedrooms including three ensuite bedrooms, four bathrooms and a powder room, two family rooms, separate living and dining rooms and two covered car parks. Kitchen is also fully fitted with tall wall cabinets and a unique kitchen island.

倘若你想在這繁華都市裡找個世外桃園，這寧靜隱逸的安樂窩足以令你整天賞心樂事。

這聳立於深水灣布力徑的全新裝修海景洋房，坐擁高私隱度，安坐家中便可遠眺深水灣高爾夫俱樂部、恬靜怡人的海灘和群山起伏的山巒美景，閒時更可陶冶性情培養對園藝的興趣，為自己的家居打造賞心悅目的園藝花園。

這罕有地段的洋房實用面積廣達4,780平方呎，設有私家升降機通往各樓層，舉步可達游泳池及網球場，絕對是舒展身心的好地方，同時亦不忘飽覽風光明媚的優美景色!

洋房間隔設計實用，設五間偌大睡房，包括三間套房、四間浴室及化妝間、兩個家庭廳、客飯廳及兩個有蓋車位。廚房設備齊全，連落地廚櫃及別具一格的中島型廚房櫃台。



38 Black's Link, Deep Water Bay

深水灣 布力徑38號

5 bed, 4.5 bath, 2 car parks

Saleable 實用 4,780 s.f.

Lease 租 \$398,000 incl.

Inquiries 查詢 9011 5499 Yuky Chung 鍾小姐

Webpage No. 網頁編號 103456



Glenfarclas[®]

FROM **CASK** TO
Glass

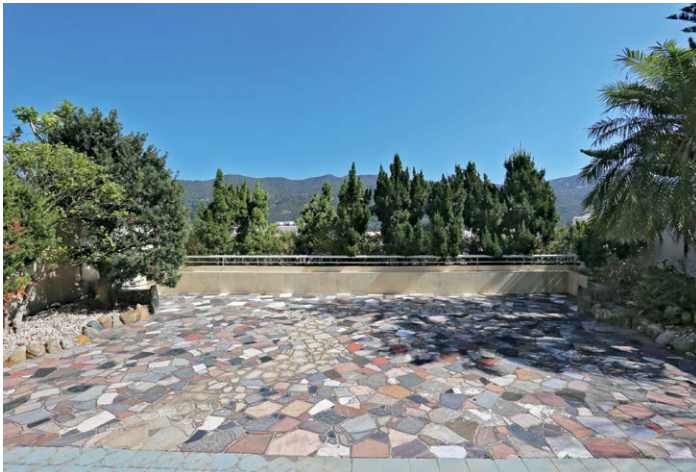


VERY RARE SINGLE MALT WHISKY

**EDINBURGH
WHISKY
CLUB**

24/F Euro Trade Centre,
Central, Hong Kong
+852 6386 2634





Seafront delight 蔚藍海岸

Situated in the tranquil setting of Redhill Peninsula, this lavish 2,876 s.f. (saleable area) townhouse offers glorious sea and mountain views, as well as four bedrooms (two ensuite), three-and-a-half bathrooms, a separate living and dining room, a family room, a balcony, a maid's room, a utility room and a garage with three car parks.

One of the greatest attractions is the lush private garden, where residents can host outdoor parties and gatherings. Kitchen is also fully-fitted and equipped. The townhouse is in move-in condition.

位於寧靜的紅山半島，這座寬敞洋房實用面積廣達2,876平方呎，坐享優美海景及山巒景。洋房設四間睡房(兩間套房)、三間半浴室、分層客廳、家庭廳、露台、家傭房、多用途房及可容納三輛車的車庫。

其中最引人入勝的賣點是鬱鬱蔥蔥的私家花園，住戶可舉辦戶外派對及聚會，盡享奢閒之樂。廚房設備亦相當齊全。洋房裝修簇新，可即時入住。

The Redhill Peninsula

紅山半島

18 Pak Pat Shan Road, Tai Tam

大潭 白筆山道18號

4 bed, 3.5 bath, 2,002 s.f. garden, 1 garage (3 car parks)

Saleable 實用 2,876 s.f.

Lease 租 \$138,000 incl. (有匙引看)

Inquiries 查詢 6188 1398 Josephine Yuen 阮小姐

Webpage No. 網頁編號 187638



Can be sold via company shares transfer
可以公司轉讓股份形式買賣



Classic abode 古雅風尚

Nestled in a quiet enclave off Tai Hang Road in Mid-Levels East, this spacious apartment in Fontana Gardens lies within walking distance to Causeway Bay. Surrounded by lush greenery, the flat spans a saleable area of 2,560 s.f. with a high efficiency rate of 85% and consists of four bedrooms with one being ensuite, a combined living and dining room, a large balcony, two bathrooms, an utility room and a maid's room. The apartment is fitted with basic classical style furnishing with a sizable kitchen.

豪園位於東半山坑道的清幽地段，徒步往銅鑼灣僅咫尺之遙。這間偌大單位被綠樹環抱，實用面積達2,560平方呎，實用率高達85%，單位設有四間睡房，其中一間為套房、相連的客廳、寬闊露台、兩間浴室、一間多用途室及一間家傭房。單位採古典裝潢，散發古雅情懷，連實用廚房，空間十足。

Fontana Gardens 豪園

1-25 Ka Ning Path, Midlevels East 東半山 嘉寧徑1-25號

4 bed, 2 bath, 1 car park

Saleable 實用 2,560 s.f.

Sale 售 \$74,000,000

Inquiries 查詢 9803 2216 Annie Lee 李小姐

Webpage No. 網頁編號 46004



首推 - 特委代理

中環核心區矜罕全層商舖出售

繁華聚焦 彌足珍貴



中環罕有全新商舖 些利街2-4號

- **昂然進駐 中環核心 人流如鯽**
坐落中環至半山自動扶手電梯旁, 5分鐘步行直達中環港鐵站, 商舖門庭若市
- **坐落中環主要幹道**
得天獨厚三鐵交匯, 佔據大都會核心優勢
- **潛力無限**
多個大型綜合發展項目, 信步核心地標中環中心



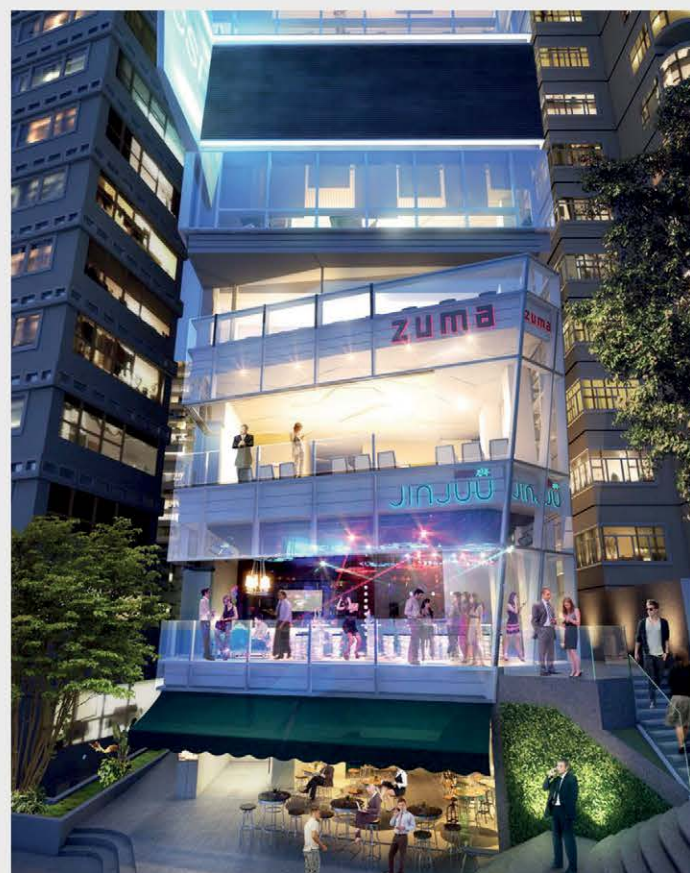
商舖全層

1,832-2,678 平方呎 (G)*

平均每呎只售
39,000 餘元起

落成年份:
預計2018年第四季

*未核實



Inquiries:
Mr. Lai

☎ +852 9484 5501

Living in the moment

Whether the goal is to harness smart technology in the kitchen or make a return to the classics, now's the time to shine



Miele Dialog oven

Can baking, roasting and cooking be reinvented? Though it looks like a standard oven, the Dialog is anything but. Using 915MHz electromagnetic waves to trace the food's texture, the Dialog can adjust for precise temperatures at the ingredient level, allowing foods to be cooked together that would normally require very different settings – and helping with the uniformity on that perfect steak. On top of that, a meal can be finished up to 70 per cent faster than when using conventional cooking methods. The oven will be available in Hong Kong in 2020.



KitchenAid Chef Touch

Transform the kitchen into a professional chef's lair with the revolutionary three-piece Chef Touch. The ultra-luxe sous-vide system by KitchenAid brings together a steam oven (with 10 sous-vide cooking functions and Assisted Chef functionality), a vacuum machine for sealing (with four automatic programmes) and a shock freezer to enjoy those delectable creations right away or freeze them for later consumption – you can even blast-chill cans and bottles.



Samsung 4-Door Flex with Family Hub refrigerator

Not just a sleek-looking smart fridge, Samsung's reasonably priced entry is energy-efficient and chock-full of fantastic features. With the unveiling of the Family Hub at the Consumer Electronics Show 2018, the Korean brand takes it to another level with Bixby voice controls and SmartThings IoT ecosystem integration. Using FlexZone technology, the bottom-right door can either be a refrigerator or a freezer with the touch of a button that customises temperature settings.



Gaggenau PI Flex induction cooktop

Want precise, fast and flexible cooking that's quiet and energy-efficient? It sounds like a dream, but high-end German brand Gaggenau has made it a reality with the PI Flex, which has a feature that can divide the surface into three pre-set heat areas for a quick transition from boiling to simmering; these heat areas can also be individually defined. Among numerous features, there's also a booster function that can raise the power from 2200W to 3700W.



De'Longhi PrimaDonna coffee machine

Incorporated with an integrated grinder and a professional brewing unit, the premium PrimaDonna Elite ECAM650.85 from De'Longhi allows coffee-lovers to create the freshest cup with a great degree of personalisation through its 4.3-inch touch LCD interface. Its LatteCrema Systems and Exclusive MixCarafe enable a dense and creamy froth and even make hot chocolate and cold milk foam possible. The machine is also app-connected to a smartphone via Bluetooth, which memorises the user's personal preferences for aroma, milk, coffee quality and temperature.

Boffi Combine kitchen

Acclaimed Italian architect-designer Piero Lissoni teams up with Boffi to deliver this elegant modular kitchen in wood and stainless steel. Want worktops and extractable tables for fixed or extendable snack areas? Like a game of Tetris, all the linear, angular and zig-zag permutations of Combine's functional mono-blocks for cooking, washing and prep are simply mesmerising.



Abimis outdoor kitchens

Cooking indoors is great, sure, but why not go al fresco with Italian brand Abimis? Whether for sophisticated entertaining on the terrace, in the garden or by the poolside, these weather-resistant marvels (in AISI 304 or 316 stainless steel) are a natural extension of the interior space – and a perfect fit.



Gorenje Ora-ito collection

The stunning series of black-and-white appliances by the innovative French industrial designer Ora İto includes a fridge-freezer with MultiFlow 360° ventilation and AdapTech temperature control; a curved oven with steam features; an auto-programmable dishwasher; an induction hob with Bridge Zone technology; a classic microwave oven; and a sleek extractor hood that's so quiet you won't even know it's there.

ARCHITECTURE | DESIGN | PEOPLE

PERSPECTIVE

For more information about interior and design inspiration, don't miss the October issue of *Perspective* magazine and check out our website at www.perspectiveglobal.com



西營盤、灣仔及赤柱三幢矜罕服務式住宅大廈

Rare 3 blocks serviced apartments in
Sai Ying Pun, Wanchai and Stanley

優越西營盤 服務式住宅

Prominent Serviced apartments in **Sai Ying Pun**

- 7-story composite building features six serviced apartments, four lofts and two retail shops including cockloft
- The building sits opposite side of the extensive redevelopment project from Hong Kong's large developers
- Huge redevelopment potentials with high existing and future rental yields
- Excellent transport connections, a few minutes' walking distances to Sai Ying Pun MTR station
- Close to Central business area, Lan Kwai Fong and SoHo districts
- 整幢樓高七層服務式住宅大廈罕有出售，提供六個服務式住宅單位、四個閣樓及兩間零售旺舖連閣樓
- 大廈對面是香港大發展商的全新大型重建項目，區內發展潛力龐大
- 極具再重建發展潛力，現時租金回報尚未反映未來租金增長
- 舉步可達西營盤港鐵站，交通便利
- 毗鄰中環商業區、蘭桂坊及蘇豪區



Net Site Area 地盤面積 1,679 s.f.

Gross Floor Area 建築面積

G/F 首層 1,604 s.f.

Cockloft 閣樓 1,420 s.f.

1/F to 2/F 一樓至二樓 3,206 s.f.

3/F to 5/F 三樓至五樓 2,821 s.f.

Sale 售 HK\$250,000,000

Sold via company
shares transfer
可以公司轉讓股份
形式買賣



灣仔 服務式住宅

Serviced apartments in **Wanchai**

- Conveniently situated in the serene area of Wanchai
- 6-storey serviced apartment block providing a total of 9 units
- Huge redevelopment potentials with high existing rental yields
- Close to local amenities including restaurants, café, bars and shops
- A few minutes' walking distances to Wanchai MTR station

- 大廈位處灣仔旺中帶靜地段
- 樓高六層服務式住宅大廈，提供九個單位
- 極具再重建發展潛力，租金回報優厚
- 鄰近本地商店，包括餐廳、咖啡廳、酒吧及商舖
- 舉步可達灣仔港鐵站

Net Site Area 地盤面積 1,300 s.f.

Sale 售 HK\$150,000,000

Gross Floor Area 建築面積

G/F 首層 516 s.f.

1/F to 4/F 一樓至四樓 3,656 s.f.

5/F 五樓 428 s.f.

Sold via company shares transfer

可以公司轉讓股份形式買賣



赤柱 服務式住宅

Serviced apartments in **Stanley**

- Ideally situated at Stanley Main Street, surrounded by tranquil environment
- 6-storey composite residential building
- Huge redevelopment potentials with high existing rental yields
- Close to Stanley Plaza, restaurants, bars and shops
- Within short walking distance to Stanley Market bus station and Stanley Main Beach

- 位處赤柱大街理想地段，環境清幽怡人
- 樓高六層服務式住宅大廈
- 極具再重建發展潛力，租金回報優厚
- 毗鄰赤柱廣場、附近餐廳、酒吧及商舖林立
- 距離赤柱市場巴士站及赤柱正灘僅咫尺之遙

Net Site Area 地盤面積 625 s.f.

Sale 售 HK\$50,000,000

Gross Floor Area 建築面積

G/F 首層 582 s.f.

1/F 一樓 402 s.f.

2/F - 5/F 二樓至五樓 1,609 s.f.

Sold via company shares transfer

可以公司轉讓股份形式買賣

Inquiries 查詢:

9662 2199 David Lau 劉先生

Repulse Bay Road

淺水灣 淺水灣道

3 bed, 3.5 bath, 1 car park

Rare waterfront sea view duplex in tranquil location
罕有海濱複式住宅，海景如畫，地段清幽恬靜

Saleable 實用 3,463 s.f.

Lease 租 \$210,000 incl.

Inquiries 查詢 9026 2912 Michelle Chung 鍾小姐

Webpage No. 網頁編號 44023



Deep Water Bay Road

深水灣 深水灣道

4 bed, 3 bath, 1,012 s.f. garden, 1 car park

Luxurious garden townhouse with private garden in
prestigious location

豪華花園洋房，連私家花園，地段顯赫尊貴

Saleable 實用 2,838 s.f.

Lease 租 \$230,000 excl.

Inquiries 查詢 9026 2912 Michelle Chung 鍾小姐

Webpage No. 網頁編號 14973



Coombe Road Detached House

山頂甘道洋房

Private pool, lift & huge garage (6 car parks)

Prestigious Peak townhouse with private pool at exclusive location
尊貴山頂洋房，連私家游泳池，地段顯赫

Saleable 實用 4,012 s.f.

Lease 租 \$418,000 incl.

Inquiries 查詢 9011 5499 Yuky Chung 鍾小姐

Webpage No. 網頁編號 19074



Park Avenue

大角咀 柏景灣

18 Hoi Ting Road

Nicely decorated duplex apartment with open kitchen in
prime location

雅致裝修複式住宅，連開放式廚房，地段優越

Saleable 實用 1,777 s.f.

Sale 售 \$45,000,000

Inquiries 查詢 9011 5499 Yuky Chung 鍾小姐

9803 2216 Annie Lee 李小姐

Peel Rise

山頂 貝璐道

4 bed, 4.5 bath, 1,147 s.f. garden, 1 garage

Prestigious 4-bedroom Peak house with ample open space enjoys spectacular views

尊貴四房山頂洋房，戶外空間充裕，享優美景色，可租可售

Saleable 實用 3,436 s.f.

Lease 租 \$250,000 / **Sale** 售 \$280,000,000

Inquiries 查詢 9648 6082 Christine Chong 莊小姐

Webpage No. 網頁編號 155745



Can be sold via company shares transfer
可以公司轉讓股份形式買賣



Magnolia Villas

薄扶林 百合苑

46 Sassoon Road

4 bed, 3.5 bath, 1 garage

Sea view 4-bedroom townhouse with private terrace and private pool in tranquil location

海景四房洋房，連私家平台及私家游泳池，地段清幽

Saleable 實用 4,440 s.f.

Lease 租 \$250,000 excl.

Inquiries 查詢 9026 2912 Michelle Chung 鍾小姐

Webpage No. 網頁編號 14761



Deep Water Bay Road

深水灣 深水灣道

4 bed, 4.5 bath, 569 s.f. roof, 2 car parks

Contemporary townhouse with spectacular view over Deep Water Bay

當代時尚洋房，飽覽深水灣攝人景致

Saleable 實用 2,742 s.f.

Lease 租 \$273,000 excl.

Inquiries 查詢 9026 2912 Michelle Chung 鍾小姐

Webpage No. 網頁編號 10204



Altadena

山頂 白加道27號

27 Barker Road

4 bed, 4.5 bath, 2 car parks

Prestigious 4-bedroom duplex with balcony enjoying fantastic Victoria Harbour view

尊貴四套房複式單位，連露台，享醉人維港美景

Saleable 實用 4,073 s.f.

Lease 租 \$330,000 incl.

Inquiries 查詢 9662 2199 David Lau 劉先生

Webpage No. 網頁編號 12838



Repulse Bay Road

淺水灣 淺水灣道

4 bed, 3.5 bath, 1,688 s.f. terrace, 2 car parks

Unique waterfront duplex with private terrace enjoying picturesque view of Repulse Bay

獨特複式臨海住宅，連私家平台，眺望淺水灣如畫美景

Saleable 實用 3,396 s.f.

Lease 租 \$300,000 incl.

Inquiries 查詢 9871 6828 Louis Wong 黃先生

Webpage No. 網頁編號 148322



Island Road

深水灣 香島道

4 bed, 4 bath, 2 car parks

Deluxe waterfront house with large terrace in Deep Water Bay

深水灣豪華海濱洋房，連偌大露台

Saleable 實用 3,449 s.f.

Lease 租 \$400,000 incl.

Inquiries 查詢 9026 2912 Michelle Chung 鍾小姐

Webpage No. 網頁編號 13666



Gough Hill Road

山頂 歌賦山道

4 bed, 4.5 bath, 1,530 s.f. garden, 2 car parks

Immaculate 4-ensuite townhouse with private garden and swimming pool

四套房尊貴洋房，氣派懾人，享私家花園及游泳池

Saleable 實用 4,652 s.f.

Lease 租 \$420,000 incl.

Inquiries 查詢 9662 2199 David Lau 劉先生

Webpage No. 網頁編號 110365



Deep Water Bay Road

深水灣 深水灣道

4 bed, 3.5 bath, 2 car parks

Newly renovated garden house in prestigious address

全新裝修花園，地段顯赫尊貴

Saleable 實用 2,838 s.f.

Lease 租 Open Offer

Inquiries 查詢 9871 6828 Louis Wong 黃先生

Webpage No. 網頁編號 14722



HOME "MAKER"

he knew exactly my expectations for my home
 he understood exactly what I was looking for i
 Joseph is clearly an expert in what he does
 the after services are absolutely impressiv
 His passion clearly reflected from how he
 very easy to work with & a pragmatic pe

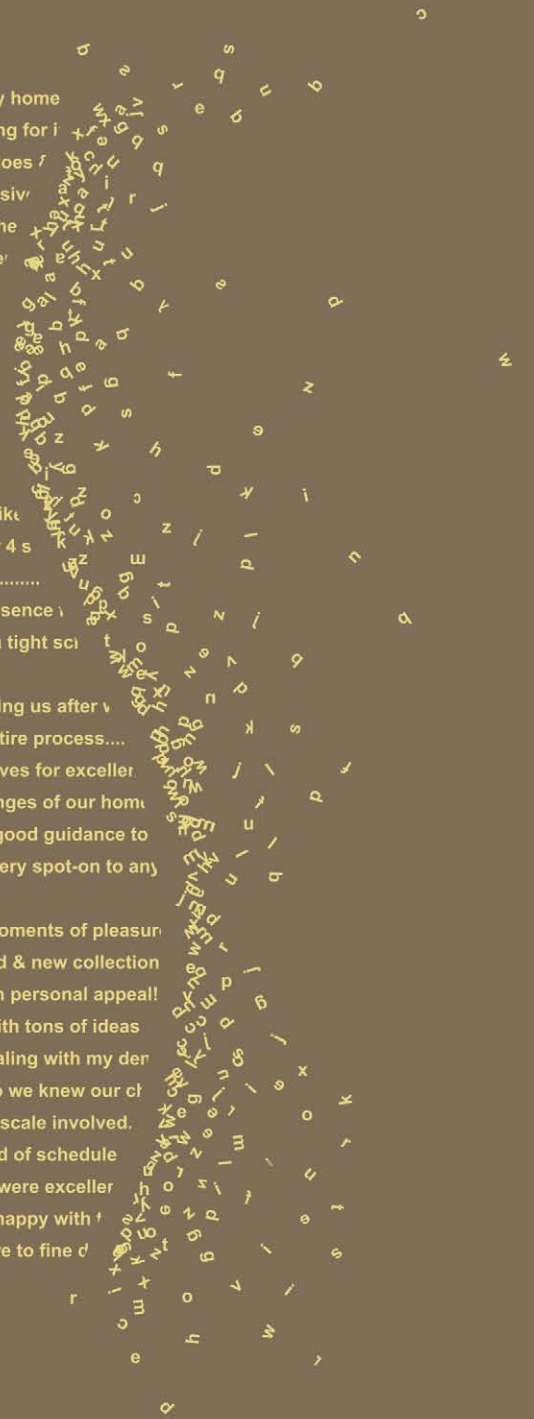
never overpromised but surpassing my
 he has been most patient with me and
 I would highly recommend Joseph to a
 JC is totally patient & responsive to all
 we are totally happy with the end-result

Our friends wished they had someone lik
 We all amazed at his ability to make our 4 s
no hidden costs or surprise add-ons.....
 Works continued steadily during our absence
 job done in advance even we required a tight sci

Joe has been most forthcoming in helping us after v
 an admirable partner throughout the entire process....
 a great communicator & a man who strives for exceller
 Friends who visited all amazed the changes of our hom
 he had a very refined taste & provided good guidance to
 responses were absolutely efficient & very spot-on to any

we now have a home giving us many moments of pleasur
 My dream art corner is alive with our old & new collection
 ..this is no show flat, this is a home with personal appeal!
 ...always ready to listen & responded with tons of ideas
 a wonderful team...super efficient in dealing with my der
 gave detailed emails of 'all' meetings so we knew our cl
 described clearly the stages & the time scale involved.
in fact, we were able to move in ahead of schedule
 I must say that the after-sales services were exceller
 Joe wants his clients to be completely happy with
 ..very easy to work with, from big picture to fine d

- Interior design
- constructions
- space planning
- project management
- tendering
- landscaping
- quantity survey



2524 9988 e/ jvision@biznetvigator.com at 11/f, leeloong building, 4 queen victoria st., central, hong kong



 Lucy SY Teo

"Joseph has great aesthetic taste and so very detailed oriented, his super swift responses give me a great sense of security that he will always be ready to help."

Peak road -contemporary classic



 Behnaz & Idris

"We have worked with Joe on several projects and would happily work with him again. Every room is sophisticated yet cozy....he is a perfectionist but very easy to work with..."

Modern, vintage & mid-century.....



 Behnaz & Idris

"Joseph was able to quickly home in on what was important to us, from functional to aesthetic. Weare thrilled with the result as always!"

Crown moldings, paneled walls & parquet floor = Timeless grace



 Jennifer & Mandan Fong

"We love your passion towards your work, your ideas are just awesome and I could never imagine my home will look like what it is now."

Magazine Gap road -pure elegance

18-19A Fung Fai Terrace

跑馬地 鳳輝台18-19A號

2 bed, 2 bath

Nicely fitted and equipped low-rise apartment at quiet yet convenient location

雅致裝修低密度單位，地段清幽，交通便利，可租可售

Saleable 實用 989 s.f.

Lease 租 \$46,000 / Sale 售 \$16,500,000

Inquiries 查詢 9028 0147 Jenson Au 區先生

Webpage No. 網頁編號 113655



Evergreen Villa

東半山 松柏新村

43 Stubbs Road

4 bed, 2 bath, 1 car park

Nicely renovated 4-bedroom apartment with spacious practical layout

雅致裝修四房單位，間隔寬敞實用

Saleable 實用 2,363 s.f.

Lease 租 \$110,000 incl.

Inquiries 查詢 9093 3381 Stephen Chan 陳先生

Webpage No. 網頁編號 49361



Dragon View

中半山 龍景樓

39 Macdonnell Road

3 bed, 2 bath

Newly renovated apartment with good sized balcony on MacDonnell Road

全新裝修住宅，連實用露台

Saleable 實用 2,309 s.f.

Lease 租 \$120,000 incl.

Inquiries 查詢 9319 0605 May Lee 李小姐

Webpage No. 網頁編號 37941



3 Macdonnell Road

中半山 麥當勞道3號

4 bed, 4.5 bath, 1 car park

Modern 4-ensuite apartment with balcony and city view at Midlevels Central

時尚四套房住宅，連露台，眺望城市景

Saleable 實用 2,547 s.f.

Lease 租 \$139,000 excl.

Inquiries 查詢 9093 3381 Stephen Chan 陳先生

Webpage No. 網頁編號 186198



香港首推



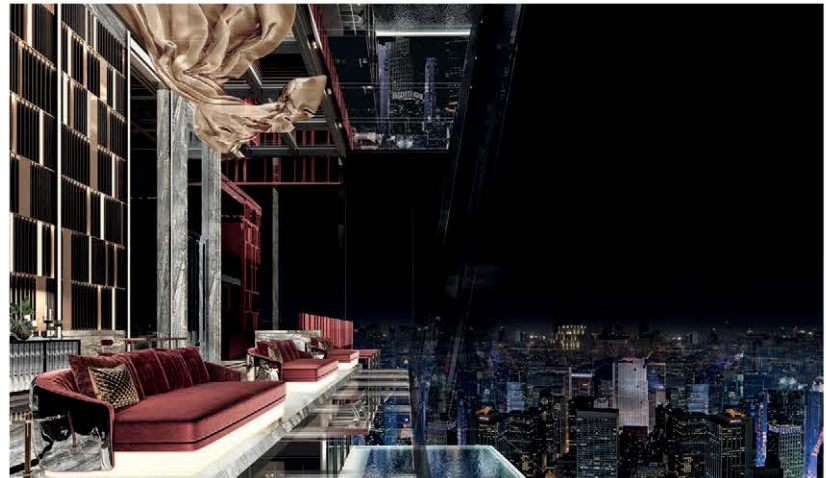
LIFE ASOKE HYPE 嶄新住宅項目

傲居曼谷焦點地段Rama9



樓價由港幣75萬幾起*

- Rama9金融商貿中心匯聚大量甲級商廈、鄰近股票交易所、中國領事館及 Makkasan機鐵站
- 真正市中心樞紐，MRT Phra Rama 9 地鐵站僅300米步程，2站直達港人熱點 Asoke
- 開放式至2房單位 (274 - 689呎)供選擇
- 三層住客會所提供多元化休閒設施，頂層無邊際泳池俯覽曼谷市



歡迎查詢

9010 7621

在此廣告的所有資料只供參考，並不構成亦不能被視為任何合約的全部或部份。購買境外未建成物業是複雜及有風險的。在作出購買決定前，買方應仔細閱讀所有相關的資料及文件，如有疑問，請在作出購買前尋求獨立專業意見。銷售代理：領域國際地產有限公司(C-062104)持有地產代理監督局發出之牌照及受「地產代理條例」規管。我們的個別海外銷售人員祇代理香港以外之物業(除非另有明文註明)，故不受「地產代理條例」規管。

LIFE ASOKE HYPE預計2022年5月落成；項目為永久業權。買方的土地權益/佔用樓宇內的物業權益為於項目之一個單位；發展許可證及相關批文處於批核階段。

*售價為付印日資料

發展商:

銷售代理:



領域國際地產有限公司

New Grade A Office Investment near the Monument

- Proximity to Bank of England, Lloyds of London and 20 Fenchurch Street ("Walkie Talkie" Building)
- Low passing rent of £52.99 psf with rent review in all office portion in 2019 & 2020
- Recent leasing transactions at similar nearby buildings have been achieving well in excess of £75.00 psf, reflecting high reversionary potential
- 鄰近英倫銀行，Lloyds of London保險交易場，以及“對講機大廈”
- 現時呎租只有每年52.99英鎊，全部寫字樓租約均在2019年及2010年調整租金
- 附近同類的寫字樓每年呎租已超過75英鎊，反映本物業具極高的加租潛力



Freehold Title
Reversionary Yield
5.20% - 5.70%
Guide Price £97.5M
£1,170 psf
6215 1618
Kelvin Wong 黃先生

Highly reversionary mixed use building in prime Soho area

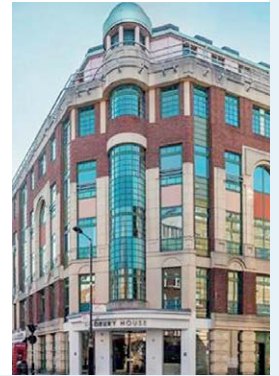
- Subject building is situated in Soho most iconic street, occupying visible corner location
- World famous retail locations of Carnaby street, Oxford street, and Regent Street are all within short walking distance
- Total passing rent at £606,297, excellent opportunity for future rental growth
- 位處Soho最著名街道的優越轉角位大廈
- 信步可達世界知名Carnaby street、Oxford street及Regent Street的優越零售地段
- 年租金收入606,297英鎊，未來租金回報增長優厚



Freehold Title
NIY 3%
Guide Price £19M
5326 3344
Timothy Chan 陳先生

Freehold En Bloc Investment opportunity

- Prominent location in Covent Garden
- Five offices and retail accommodation arranged over LG, G and five upper floors
- Potential to vacant the office block for refurbishment /extension (subject to consents)
- Long stable rental income with 6.8 years unexpired
- Rare high yield building in West-End with high upward potential
- 位處Covent Garden的優越地段
- 地下一層、首層及五層上層設辦公室及零售單位
- 辦公室可交吉作翻新或擴建（須經城規批准）
- 尚餘6.8年租約，長期租金回報優厚
- 罕有West-End高回報物業



Freehold Title
NIA of 36,322 s.f.
NIY of 4.52%
Guide Price
£42.25M
5662 8660
Sabella Poon 潘小姐

High Yield Undervalued En-Bloc Investment with Secure Income

- Strong and very secure tenants, mostly rated 5A 1 by D&B
- Office portion single-let to government
- Regional prime high-street location
- 優質和具保證的租戶組合，大部分被鄧白氏評級為5A 1
- 寫字樓部分由英國政府單一承租
- 區內一線零售街道



Net Initial Yield 7.83%
Guide Price £9.8M
£88 psf
6215 1618
Kelvin Wong 黃先生

Rare single letted office located in the heart of London Tech hub

- Securely-let to renowned technological company on a new lease term of 10 years
- Located in the heart of Clerkenwell and Old street – the emerging tech hub of UK
- Only Seven minutes' walk to East Farrington Crossrail Station
- 由著名科技公司承租，擁10年長約
- 位處Clerkenwell及Old street市中心 — 英國新興的科技中心
- 7分鐘路程可抵達East Farrington火車站



NIY of 4.25%
Guide Price £9.75M
5326 3344
Timothy Chan 陳先生

Freehold En Bloc investment opportunity in Earls Court

- The property comprises 12 self-contained apartments in an imposing freehold building
- The accommodation is split over LG, G and four upper floors, with a lift serving all floors
- The property would benefit from refurbishment or a more substantial renovation, subject to consents, to create a high quality residential offering
- 永久業權物業，設12個住宅單位
- 住宅單位位於地下一層、首層及四層上層，設升降機
- 若取得城規批准，可翻新復修，提升住宅質素



Freehold Title
Net saleable area of 5,325 s.f.
Projected reversionary yield of 3%
Guide Price £6.5M
5662 8660
Sabella Poon 潘小姐

THE
ESSE
SUKHUMVIT 36

A HARMONY OF CONTRAST

LUXURY CONDOMINIUM IN BANGKOK
THE FIRST PREMIUM RESIDENTIAL PROJECT BY
HONGKONG LAND AND SINGHA ESTATE

GET SPECIAL OFFER*
Exclusive Furniture Package

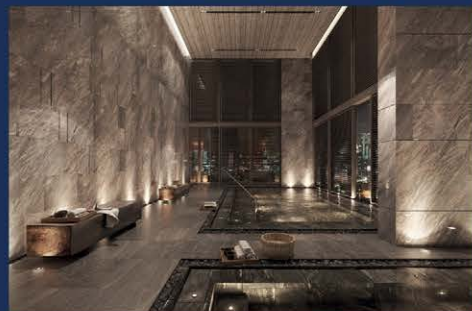
Exhibition
20th - 21st OCTOBER 2018

11 AM - 7 PM

**Mandarin Oriental Hotel
Gloucester Room 2/F
5 Connaught Road, Central**

Seminar for Property Investment in Bangkok
at 1 PM & 4 PM daily

RSVP & Enquiry
9010 7621



- **CITY AND SERENITY** - Blending the vibrant Thong Lo city life with a serene atmosphere of the residential project.
- **AUTHENTIC AND CONTEMPORARY** - Merging traditional Thai architectural elements with modern contemporary design.
- **SOCIETY AND EXCLUSIVITY** - Enjoy a variety of recreation facilities designed to match the needs of the residents, whether for communal or individual use.
- **PASSION AND FUNCTION** - Spacious unit functions designed to serve the resident's passion with unit size ranging from 414 - 2,712 sq.ft.

Developer



Marketing Agent



LANDSCAPE

CHRISTIE'S
INTERNATIONAL REAL ESTATE

THE ESSE SUKHUMVIT36 Condominium, the permit for construction of the building is under process. Expected completion: October 2020. All pictures are computer graphic generated. Pictures are solely used for THE ESSE SUKHUMVIT36 Condominium and subject to change without prior notice. *Promotion is for reservation fee made on 1 September - 31 December 2018, terms and conditions apply.

Purchasers will be acquiring a freehold interest in their respective condominiums but not freehold title in the land. They shall be entitled to exclusive use of their condominium units plus the right to use all communal facilities in the clubhouse, car park floors and/or the communal areas (where applicable). Purchasing uncompleted properties situated outside Hong Kong is complicated and contains risk. You should review all relevant information and documents carefully before making a purchase decision. If in doubt, please seek independent professional advice before making a purchase decision.

Marketing Agent: Landscape Christie's International Real Estate (C-018733) is licensed and regulated by EAA. Our sales representatives for overseas property work exclusively in relation to properties outside Hong Kong and unless expressly stated otherwise, are not licensed under the EAA to deal with Hong Kong properties. The information, text and photos contained herein are provided solely for the convenience of interested parties and no warranty or representation as to their accuracy, correctness or completeness is made by Landscape Christie's International Real Estate.

Fully Refurbished Office Investment in the City of London

- Proximity to Fenchurch Street, Tower Hill and Aldgate Stations, and the future Chinese Embassy
- Fully Refurbished
- Low passing rent of £40 psf with high reversionary potential
- Significant landlord control with all office leases outside 1954 LTA
- 鄰近Fenchurch Street, Tower Hill和Aldgate地鐵站, 以及未來中國大使館園區
- 全新翻新
- 現時呎租只有每年40英鎊, 具高加租潛力
- 全部寫字樓租約不在1954 LTA的範圍內, 業主可控制終止租約的主動權



Net Initial Yield
6.00%
Guide Price
£30M
£615 psf
6215 1618
Kelvin Wong
黃先生

Prime en bloc retail/residential mixed use investment in Chelsea

- Subject en bloc mixed use retail/residential investment is within close proximity to Natural History Museum and Fulham Road close to South Kensington underground station
- Ground and basement let to Michelin starred restaurant with 10 years to expiry, 3 bed self contained residential unit on 1/F to 3/F
- Current passing rent is £255,500 p.a.
- 毗鄰Natural History Museum及Fulham Road的零售商舖及住宅大廈
- 首層及地庫由米芝蓮星級餐廳承租, 更擁10年的租約, 一樓至三樓則是三房住宅單位
- 年租金收入255,500英鎊



GIA of 5,281 s.f.
Net Initial Yield
2.99% (overall)
Guide Price £8M
5326 3344
Timothy Chan 陳先生

En Bloc Office building in Prime Southwark

- Newly constructed iconic contemporary office building, designed by Stirling Prize winner
- 5 mins and 6 mins walk to BOROUGH and SOUTHWARK Tube station respectively comprises ground and three upper floors
- Total current rent of £1,173,367.50 p.a., providing an excellent opportunity for future rental growth
- 全新地標式當代時尚辦公大廈, 由奪史特靈獎的建築師所設計
- 大廈設首層及三層上層, 距離BOROUGH及SOUTHWARK站分別5分鐘及6分鐘
- 年租金總收入1,173,367.50英鎊, 租金回報優厚



Freehold Title
NIA of 19,437 s.f.
NIY of 4.75%
Guide Price £23.1M
5662 8660
Sabella Poon 潘小姐

High Yield Freehold London Investment with Long Unexpired Lease

- Excellent location, proximity to London Tower Bridge
- Weighted averaged 11.2 years to lease expiry and 10.9 years to break
- Office single-let to the strong FTSE 250 listed covenant of ZPG
- 鄰近倫敦塔橋, 位置優越
- 帶穩固長租約, 平均還有11.2年到期, 10.9年到終止租約權
- 寫字樓部分由富時250成分上市公司ZPG單一承租



Freehold Title
Net Initial Yield 5.00%
Guide Price £89M
£1,036 psf
6215 1618
Kelvin Wong 黃先生

Unique listed building in prime location

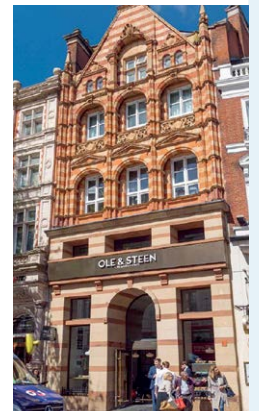
- Rare opportunity to acquire a trophy asset in the heart of Mayfair
- Within easy walking distance to Bond Street and Oxford Circus
- Opportunity to extend office to 5th floor
- 位處Mayfair市中心的矜罕物業
- 舉步可達Bond Street及Oxford Circus
- 辦公室可擴建至五樓



Reversionary yield of
3.81%
Guide Price £17M
5326 3344
Timothy Chan 陳先生

En Bloc mix use investment in the Royal Borough of Kensington and Chelsea

- Adjacent to HSBC Bank and opposite High Street Kensington Underground Station
- Retail element basement and ground floor is single let with 20 year lease from Jan 2018
- Upper floors with four residential flats were fully let
- Total Passing rent is £380,186 p.a.
- 物業毗鄰匯豐銀行及面對High Street Kensington站
- 地庫及首層是零售商舖, 由2018年1月起擁20年長約
- 上層是四個住宅單位, 現已租出
- 年租金收入380,186英鎊



Freehold Title
NIA of 6,560 s.f.
NIY of 3.75%
Guide Price £12.5M
5662 8660
Sabella Poon 潘小姐

JAPANESE "ONSEN" RESORT,
OFFERING IN-HOUSE NATURAL
HOT SPRING OF YUGAWARA

日式溫泉大宅 呈獻大自然湯河原溫泉



YUGAWARA HOT SPRING ESTATE

KANAGAWA, JAPAN 日本 神奈川

The Manyoshu (the oldest existing collection of Japanese poetry) describes Yugawara as a hot spring district since the early times of Japan history. Many of the literature giants have penned their masterpieces from here. Classic traditional Japanese Ryokans still exist along the Chitose River. The Yugawara Hot Spring Estate, sitting on the upper hill of Risoukyo in Oku Yugawara, atop a 21,000 square feet lot. This modern and beautifully designed 2 story single family home has 2 master bedrooms, 4 bedrooms, 2 guest rooms, 1 washitsu (Tatami-room), 11 baths, home theater, elevator, with a private drive way. Walking into the main foyer entrance hall, you are invited by the sunlight pouring through the high ceiling window and splendid spiral staircase. Floor-ceiling window from the open dining and living room leads you to a green lawn garden with a water fountain. The Estate pampers you with an indoor and outdoor onsen bath. Perfect for discrete few who deserves the best, as well as to entertain VIP guests, or simply for the whole family to enjoy.

現今日本最古老的詩歌集 -- 萬葉集, 將日本原始時代以來的湯河原稱為溫泉區。許多文學巨頭都從這裡找到靈感創作偉大的傑作。千歲川沿岸仍然保留傳統經典的日本旅館。湯河原溫泉村坐落在奧湯河原的理想鄉山上, 占地21,000平方呎。這個當代時尚的樓高兩層家庭式住宅盡顯瑰麗經典的設計, 住宅提供兩間主人睡房、四間睡房、兩間客房、一間和室(榻榻米房)、十一間浴室、家庭影院、電梯及私家車道。甫踏進大廳, 通過偌大的落地窗戶和華麗的螺旋樓梯, 將感受到溫暖怡人的陽光。開放式客飯廳設有落地門窗, 可通往青蔥茂綠連噴泉的美麗花園。溫泉村設有室內和戶外溫泉浴, 最適合招待貴賓或全家人享受奢閒之樂。



About Yugawara

Yugawara is one of the leading Hot Spring resorts in Japan and famous for being an *onsen* (hot spring) town. It is an area where you can enjoy great nature as well as fresh seafood, as it is surrounded by mountains and ocean. Around Yugawara, there are many famous sightseeing areas, such as Atami, Izu, Hakone, Odawara as well as Mt. Fuji, all located close to Yugawara.

Visit yugawara-resort.com for more info about Yugawara

Inquiries 查詢:

Simon Ng 吳先生 TEL: 6011 1706
simon.ng@landscape-christies.com

Michael Yeung 楊先生 TEL: 9126 5848
michael.yeung@landscape-christies.com

PRICE UPON REQUEST 售價待詢

Presented by

JCR CHRISTIE'S
INTERNATIONAL REAL ESTATE

LANDSCAPE CHRISTIE'S
INTERNATIONAL REAL ESTATE





Super Prime high rise condo in Roppongi close to Roppongi Station Roppongi, Minato-Ku, Tokyo 東京 港區 六本木

- Subject property is a three bedroom condo on the 23/F in a 27 storey high rise condominium bldg. comprising a total of 270 self contained luxury residential units within close proximity to Roppongi Station
- Completion date was August 2012, currently vacant, 24 hour manned security post and pet friendly
- 2 min walking distance to Roppongi station, 8 min walking distance to Kamiyacho Station, 9 min walking distance to Tameikesanno Station
- 這個23樓的三房單位位於樓高27層的住宅大廈，整幢大廈提供270個豪華住宅單位，毗鄰六本木站
- 建於2012年8月，現正交吉，24小時保安及可飼養寵物
- 距離六本木站2分鐘步程，神谷町站8分鐘步程，溜池山王站9分鐘步程

Freehold title
(3,944 shares out of a total of 1 M shares)
GIA of 81.46 sq.m.
Guide price JPY 198M (approx. HK\$13.65M)

Super Prime high rise condo developed by Grosvenor Estate close to Roppongi Hills Roppongi, Minato-Ku, Tokyo 東京 港區 六本木

- Subject property is a 3 bedroom unit with 2 bathrooms on the 5/F in a 14 storey high rise condominium tower comprising a total of 99 self contained luxury residential units adjacent to the well-known Roppongi Hills development by the well-known Mori Bldg. Corp, Completion date was June 2003
- 8 min walking distance to Roppongi station; 7 min walking distance to Azabu Jyuban station
- 這個5樓的三房及兩浴室單位位於樓高14層的住宅大廈，整幢大廈提供99個豪華住宅單位，毗鄰由著名地產開發商森大廈株式會社開發的六本木新城，建於2003年6月
- 距離六本木站8分鐘步程，麻布十番站7分鐘步程

Freehold title
(15,584 out of 1,321,945 shares)
GIA of approx. 155.84 sq.m.
Guide Price JPY 388M (approx. HK\$26.76 M)



Super Prime high rise condo in Akasaka close to Roppongi station Akasaka, Minato-Ku, Tokyo 東京 港區 赤坂

- Subject property is a 2 bedroom unit on the 14/F in a 44 storey high rise condominium tower comprising a total of 319 self contained luxury residential units within close proximity to Roppongi train station
- Completion date was February 2018, currently vacant
- 7 min walking distance to Roppongi train station; 3 min walking distance to Nogizaka station
- 這個14樓的兩房單位位於樓高44層的住宅大廈，整幢大廈提供319個豪華住宅單位，鄰近六本木站
- 建於2018年2月，現正交吉
- 7分鐘步程可抵達六本木站，3分鐘步程可抵達乃木坂站

Freehold title
(277,183 out of 100 M shares)
GIA of approx. 83.32 sq.m.
Guide Price JPY 278M (approx. HK\$19.17M)

Prime en bloc low rise residential bldg. with storage facilities in Shibuya-Ku Shibuya-Ku, Tokyo 東京 涉谷區

- Subject Property is an en bloc residential bldg housed in a 4 storey reinforced concrete structure with 1 basement level. The bldg. has a total of 5 self contained residential units and 3 storage units
- Completion time was October, 1985
- Projected reversionary gross rental will be JPY14,290,296 p.a.
- 7 min walking distance to Hiroo Station
- 樓高4層的鋼筋混凝土住宅大廈，連一層地庫，大廈提供5個住宅單位及3個儲物室
- 建於1985年10月
- 年租金收入14,290,296日元
- 距離廣尾站7分鐘步程

Freehold title
GIA of approx. 333 sq.m.
Projected reversionary gross yield upon
full occupancy will be 4.39%
Guide price JPY 325M (approx. HK\$22.4M)





GRAFF

THE MOST FABULOUS JEWELS IN THE WORLD

GRAFFDIAMONDS.COM

© 2018 GRAFF



GRAFF

THE MOST FABULOUS JEWELS IN THE WORLD

ST. GEORGE'S BUILDING, CENTRAL +852 3125 1580 THE PENINSULA HONG KONG +852 2735 7666 THE RITZ-CARLTON HONG KONG +852 3125 1570
WYNN MACAU +853 2878 3077 WYNN PALACE +853 2877 6098 MACAU STUDIO CITY +853 2885 2238

GRAFFDIAMONDS.COM