



# MANIFOLDS

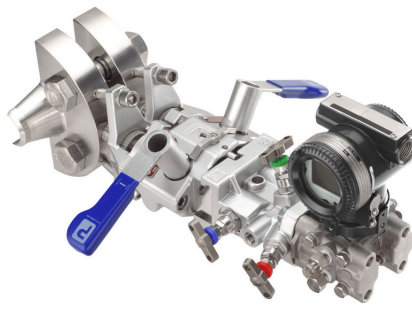
---

## ABOUT

Parker's manifold valves provide a more compact, reliable and cost-effective solution than employing externally mounted valves.

Additionally, these manifold valves employ fewer connections, resulting in a reduced number of leak points. We also offer custom designed and manufactured manifold systems.

---



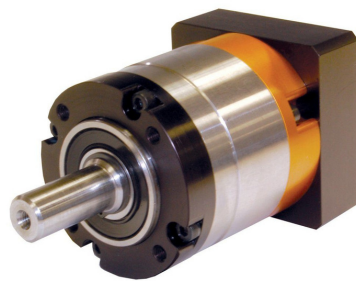
## CCIMS

- Close coupled solution for low measurement applications
  - Reductions in installation time of up to 75%
  - Reductions in connections and leak paths of up to 85%
  - Features phastfit for rapid transmitter removal and connection
- 



## HI-PRO SERIES

- A complete range of ball valves 10mm ball and needle valve manifolds
  - Including block and bleed, and double block and bleed manifold options
  - Working pressures to up to 10,000 psi (690 bar)
  - Available with integral A-LOK or CPI connections, reducing leak paths and installation costs
- 



## PV SERIES

- Roddable, straight through flow path
- Gauge port option
- Bonnet lock plate resists accidental bonnet disengagement
- PEEK, Acetal, PFA seat materials available