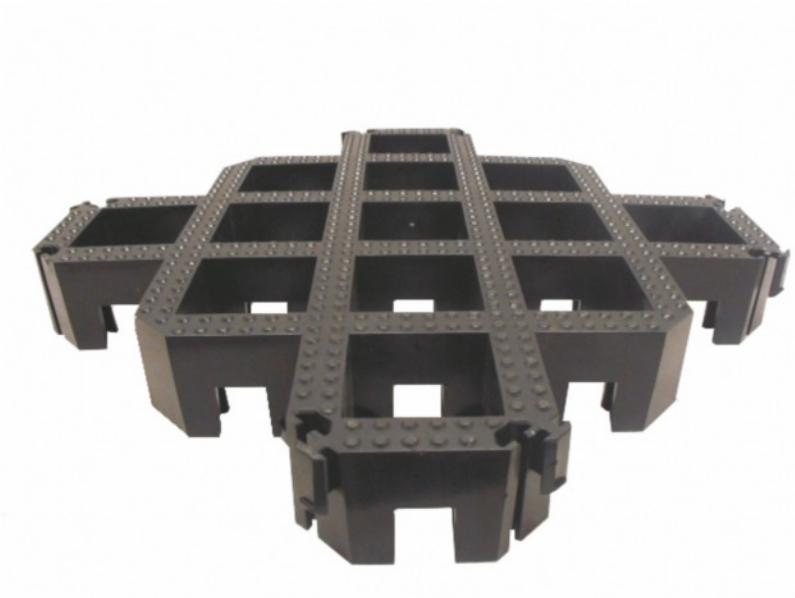
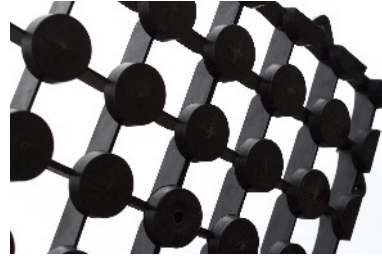




FIRMGROUND POROUS PAVING





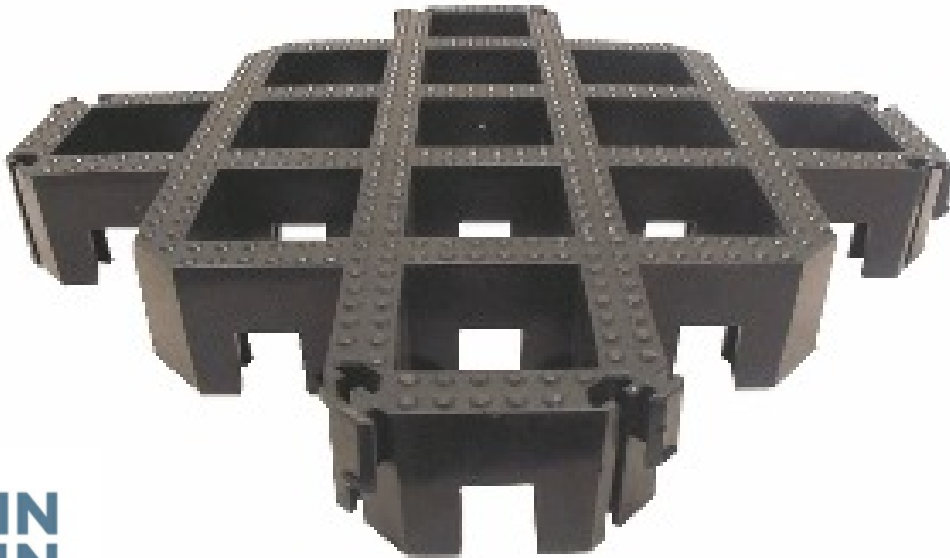
WHAT IS FIRMGROUND?

FirmGround is a UK manufactured strong, versatile and interlocking porous paving system with products available for a wide range of applications.

FirmGround has been specially designed in the **UK** to allow rain water to drain away whilst still retaining a small amount, this prevents the grass from getting waterlogged and also ensures that it doesn't dry out through lack of water. **FirmGround** can also be filled with your desired type of gravel reinforcing areas whilst still keeping them naturally attractive



BENEFITS OF THE FIRMGROUND SYSTEM



**MADE IN
BRITAIN**



Benefits of the FirmGround System

- Made from recycled material & 100% recyclable
- Rapid installation with our unique interlocking system
- UV resistant
- SUDS source control compliant
- Durable and Maintenance free

Applications

- Carparks & hardstandings
- Footpaths & verges
- Pedestrian areas
- Bridge abutments
- Access Roads, HGV service access and overflow grass car parking

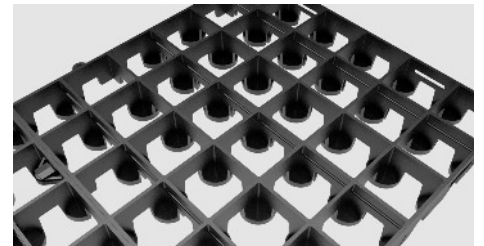
FIRMGROUND RANGE

FirmGround has three products in its range meaning there is a product available for almost every application please call or email our sales team for further information and a speedy competitive quote.

FIRMGROUND 48

PRODUCT DATA

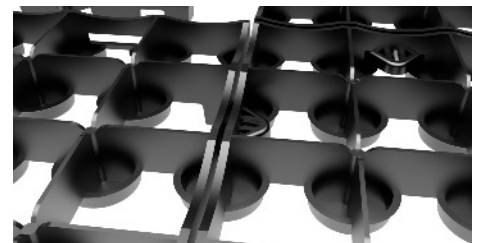
NOMINAL SIZE - 500 x 500 x 48 mm (+0/-3%)
COVERAGE RATE - 4 blocks / m²
UNIT WEIGHT - 1.2 kg
INFILTRATION RATE > 500cm/hour
RUN OFF COEFFICIENT RANGE - 0.05 - 0.25
INFILL SURFACE AREA > 90%
COMPRESSIVE STRENGTH (filled) 2000 KN / m²



FIRMGROUND 70

PRODUCT DATA

NOMINAL SIZE 500 x 500 x 68 mm (+0/-3%)
COVERAGE RATE 4 blocks / m²
UNIT WEIGHT 1.8 kg
INFILTRATION RATE > 500cm/hour
RUN OFF COEFFICIENT RANGE 0.05 - 0.25
INFILL SURFACE AREA > 90%
COMPRESSIVE STRENGTH (filled) 2400 KN / m²



FIRMGROUND HEAVY

PRODUCT DATA

NOMINAL SIZE 500 x 500 x 80mm (+0/-3%)
COVERAGE RATE 4 blocks / sq.m.
UNIT WEIGHT 3.2 kg (12.8kg/sq.m.)
INFILTRATION RATE(Gravel-filled) > 250cm/hour
RUN OFF COEFFICIENT RANGE 0.05 - 0.4
INFILL SURFACE AREA > 55%
COMPRESSIVE STRENGTH(unfilled) >2500 KN / m²

