

# FAIRWAY HYDRAULICS



## Screw-In Cartridge Valves



**RELIEF**

- Single - Dual
- Pilot Operated
- Direct Acting
- Ventable / Solenoid Vented
- Adjustable Range
- Max Working Pressure 350 Bar
- Flow Rates up to 300 Ltrs/Min
- Aluminium & Steel Bodies

**SEQUENCE**

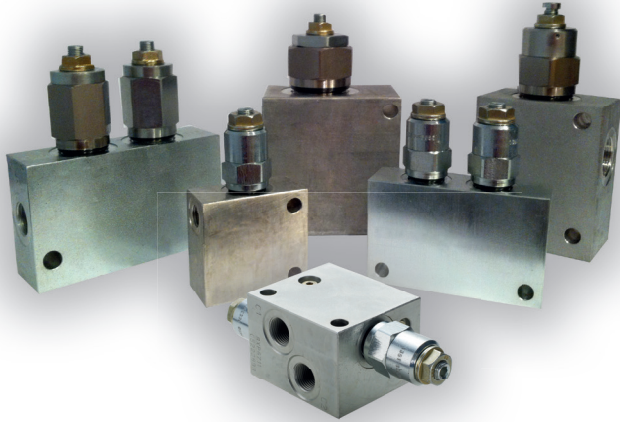
- Direct Acting
- Pilot Operated
- Check & Reverse Options
- Unloading
- Adjustable Pressure Range
- Max Working Pressure 350 Bar
- Flow Rates up to 150 Ltrs/Min
- Aluminium & Steel Bodies



**SHUTTLE**

- Ball Type Cartridge
- Brake Sequence- Sliding Spool
- Pilot Operated Options
- Logic Element Options

# COUNTER BALANCE ( OVERCENTRE ) / PRESSURE REDUCING / MOTION CONTROL



## COUNTER BALANCE (OVERCENTRE)

- Adjustable Range
- Pilot Relief With Check
- Part Balanced
- Fully Balanced
- Check & Counter Balance
- Max Working Pressure 350 Bar
- Flow Rate up to 300 Ltrs/Min
- Aluminium & Steel Bodies
- Alternative Body Options
- Cavity Equivalents

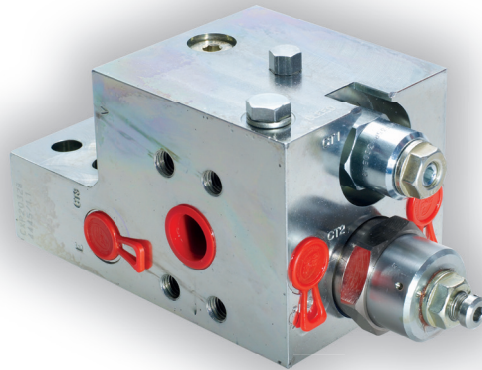
## PRESSURE REDUCING

- Direct Acting With Reverse Relief
- Pilot Operated
- Reverse Flow Relief Options
- Flow up to 200 Ltrs/Min
- Max Working Pressure 350 Bar
- Adjustable Pressure Range



## MOTION CONTROL

- Brake Shuttle - Pilot Assisted
- Pilot Assisted
- Motor Applications
- Flow Rate 30 Ltr - 350 Ltrs/Min
- Max Working Pressure 350 Bar
- Steel Bodies



**LOAD CONTROL/HOLDING**

SAE Ported 3000 & 6000  
Flange Mounted  
Adjustable Range  
Flow Rate 550 Ltrs/Min  
Max Working Pressure 400 Bar

**NEEDLE/RESTRICTOR**

Fine Adjustment  
Positive Shut Off  
Flow 30 Ltrs/Min &  
80 Ltrs/Min  
Working Pressure  
up to 350 Bar



**CHECK**

Line Mounted Poppet  
Ball & Poppet Type  
Pilot To Open/Pilot To Close  
Decompression Poppet  
Flow Rate up to 120 Ltrs/Min  
Max Working Pressure  
up to 350 Bar  
Single & Dual Bodies  
Aluminium & Steel  
Cavity Equivalents

## FLOW DIVIDER / FLOW REGULATORS / UNLOADING

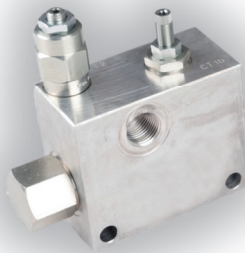


### FLOW DIVIDER

50/50 Ratio  
Flow Rate up to 220 Ltrs/Min  
Working Pressure up to 350 Bar  
BSP Ports - Aluminium & Steel

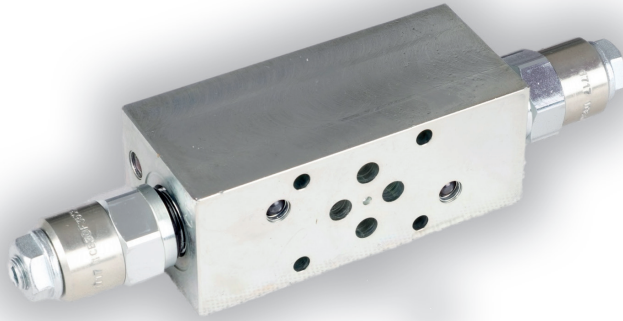
### FLOW REGULATORS

Priority-Bypass-Restrictive  
Relief Options  
Regulator / Diverter  
Priority- Electric Override  
BSP Ports- Aluminium & Steel  
Working Pressure up to 350 Bar  
Inlet Flow up to 380 Ltrs/Min  
Regulated 160 Ltrs/Min



### UNLOADING

Pilot Operated Sliding Spool  
Priority Unloading  
Two Pump Unloading  
60 & 200 Ltrs/Min  
Working Pressure up to 350 Bar  
BSP Ports - Steel



**OVERCENTRE MODULES**

- Cetop 3 & 5 - Pilot To Open
- Pilot Assisted With Relief Check
- Single & Dual Check
- 30 & 90 Ltrs/Min
- Working Pressure up to 350 Bar
- Aluminium & Steel Options

**SOLENOID**

- Poppet & Spool Type
- Normally Open - Normally Closed
- 2, 3 & 4 Way - 2 & 3 Position Spool
- Proportional Options
- Flow Rate up to 300 Ltrs/Min
- Working Pressure up to 350 Bar
- Optional AC/DC Voltages

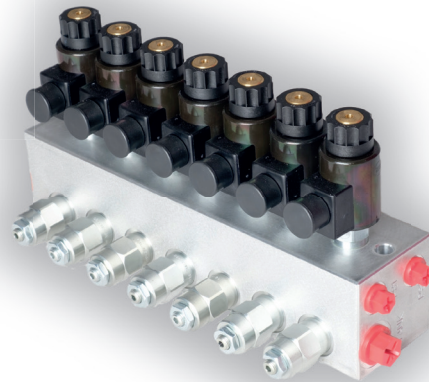


## SPECIALS

---



Motor Mounted Relief/Overcentre  
Hand Pump Cartridges  
Pressure Intensifier  
Cavity Tooling  
Manifold Development  
& Prototypes



---

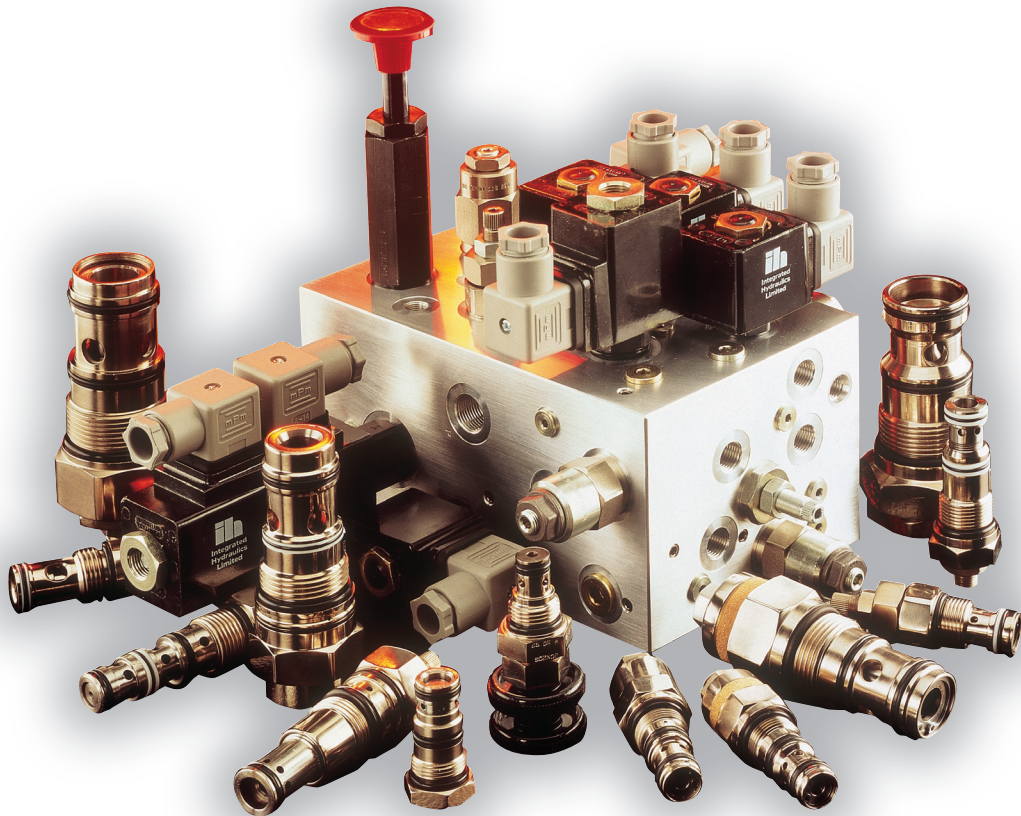
***Fairway Hydraulics is the UK distribution partner for one of the global market leaders in Hydraulic Screw-In-Cartridge Valves, suitable for both the Industrial and Mobile Industry sectors.***

***Diverse selections of valves are available from stock, offering customers prompt lead times, at competitive prices. From Counterbalance Valves to Directional Control, through to Proportional and Pressure Relief, Fairway Hydraulics can offer a product to suit individual customer requirements.***

***Our portfolio also extends to technical support, with new and existing applications, as well as circuit design, 3D CAD modelling, prototyping, and product selection, all part of the service.***

---

Call us now on 0845 231 0134



# FAIRWAY HYDRAULICS

Unit 96a Blackpole Trading Estate  
Worcester, WR3 8TJ. Tel: 01905 457519  
[www.fairwayhydraulics.com](http://www.fairwayhydraulics.com)