

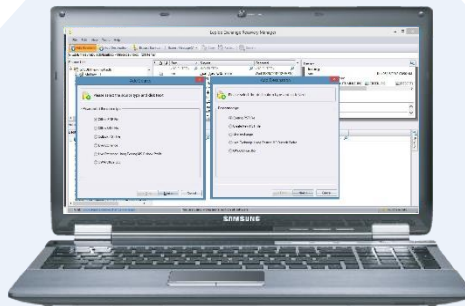
Lepide Exchange Recovery Manager



Lepide Exchange Recovery Manager provides you with all you need to repair broken EDB files, extract EDB files from backups, restore OST files and repair corrupt information stores. It also allows you to carry out granular mailbox level repair, recovery and exports and even helps you migrate the contents to an alternative Exchange or Office 365 server.



Exchange Recovery



- ✓ Instantly repair, restore and recover your Exchange servers
- ✓ Quickly convert EDB files to PST files while bypassing the 2GB file size limit
- ✓ Easily export EDB to a wide range of file types including EDB to PST, EML, MSG, RTF, TXT and HTML.
- ✓ Simple to install with no agent required
- ✓ Export from on-prem Exchange and Office 365 to PST
- ✓ Simple to extract attachments and EDB files from a variety of sources
- ✓ Perform in-depth searches even in attachments' body and previews prior to recovery
- ✓ Easily migrate mailboxes and Public Folders to a variety of destinations
- ✓ Simplify migration from on-prem Exchange to hybrid cloud environment or Office 365
- ✓ On-prem Exchange to on-prem Exchange migration

Awards



Lepide Exchange Recovery Manager



License Information	Standard Edition	Professional Edition
Lepide Exchange Recovery Manager	Recover/Migrate mailboxes and public folder from EDB to PST, Live Exchange Server or any other email service supported by outlook (GroupWise, Gmail etc.)	All the features of the standard edition PLUS <ul style="list-style-type: none"> • Item Level Search and Restore • Recovery from Exchange Backups • Migrate data from Office 365 • And much more...

Key Benefits	Standard Edition	Professional Edition
Recover Mailboxes and Public Folders from Corrupt EDB File	✓	✓
Support for PST and Outlook Profiles in Target	✓	✓
Support for other email clients supported by Outlook (GroupWise, Gmail, etc.)	✓	✓
Support for PST, Live Exchange Server, Office365 and Outlook Profiles in Source	✗	✓
Support for Live Exchange, Office365, .OST, .eml, .msg, .html, .rtf, .txt in Target	✗	✓
Item Level Restoration	✗	✓
Search in Emails and Attachments for recovery of selected items and forensic investigation purposes	✗	✓
OST to PST conversion	✗	✓
Migrate Data between two Live Exchange Servers	✗	✓
Migrate Data from Office365 to Various Targets	✗	✓
Recovery from backups created by NTBackup, Symantec, VERITAS, HP Backup (both incremental and differential backup) and CA ARCserve	✗	✓
Extract attachments for a specific period, from various sources to a selected folder on disk	✗	✓

Basic System Requirements

- Pentium Class Processor
- 2 GB RAM

Supported Windows and Servers

Windows OS Platforms:

- Windows 10 / Windows 8.1 / Windows 8 / Windows 7 / Windows Vista / Windows XP / Windows Server 2012 R2 / Windows Server 2012 / Windows Server 2008 R2 / Windows Server 2008 / Windows Server 2003 (Both 32-bit and 64-bit versions are applicable)

Exchange Server Versions:

- Exchange Server 2016 / Exchange Server 2013 / Exchange Server 2010 / Exchange Server 2007 / Exchange Server 2003 / Exchange Server 2000

Microsoft Outlook Versions:

- Microsoft Outlook 2016 / Microsoft Outlook 2013 / Microsoft Outlook 2010 / Microsoft Outlook 2007 / Microsoft Outlook 2003 / Microsoft Outlook 2000

Notes:

- Prior installing the software, ensure that .NET Framework 4 is installed in your system.
- Don't install the software on your Exchange Server. It should be installed on client machine where Outlook is pre-installed and configured.

Contact Details



Product Experts

USA/Canada: +1-800-814-0578
UK/Europe: +44 (0)-845-594-3766
Rest of the World: +91 (0)-991-004-9028



sales@lepide.com

Technical Gurus

USA/Canada: +1-800-814-0578
UK/Europe: +44 (0)-800-088-5478
Rest of the World: +91 (0)-991-085-4291

support@lepide.com