

## Governor Speed Dating

**Potential new school governors engaged with school leaders in an evening of match-making.**

NPW in partnership with School Governors One-Stop Shop (SGOSS) facilitated a recruitment event in a 'speed-dating' format on Tuesday, 21 March 2017 to find enthusiastic new governors.

Heads and Chairs of governors from schools across the phases set up individual stalls and each gave a short talk introducing their school and its community. Prospective governors were then invited to visit each stall to discuss their expectations in more detail. After 10 minutes of discussion the candidates moved on to the next

stall. By the end of the evening both schools and candidates had enough information to decide whether they would like to meet for further discussion.

At the next stage schools will invite prospective candidates to visit their school and meet with the Head and Chair of governors in a more formal setting.

Governor Services intends to hold a governor recruitment event each term when there are governor vacancies available to fill.

SGOSS is an independent charity dedicated to recruiting volunteers to serve on school governing bodies across England.



## New governors, don't forget...



**Head of Governance and NPW Operations, Paul Baglee, has given his top 10 pieces of advice for new governors.**

Read the full article at <http://www.sec-ed.co.uk/best-practice/supporting-new-governors-10-pieces-of-advice/>



Home | Best Practice | Article



### Supporting new governors: 10 pieces of advice

Written by: Paul Baglee | Published: 29 March 2017

The hunt is always on for prospective school governors and supporting those new to the role is crucial to ensuring they stay the course. Paul Baglee offers 10 tips for new governors



Be an expert on your school

Even before you have attended your first meeting as

**Also in this edition:**

- Sandringham is on Serbian TV - Page 2**
- Message from NPW - Page 2**
- Training - Page 4**
- Vacancies - Page 11**

# Sandringham speaks on computing for Serbian television

**Sandringham Primary School and NPW have appeared on Serbian television.**

In January, a crew from Radio Television Serbia visited Sandringham, along with several other settings, whilst filming a story about UK schools and new technology.

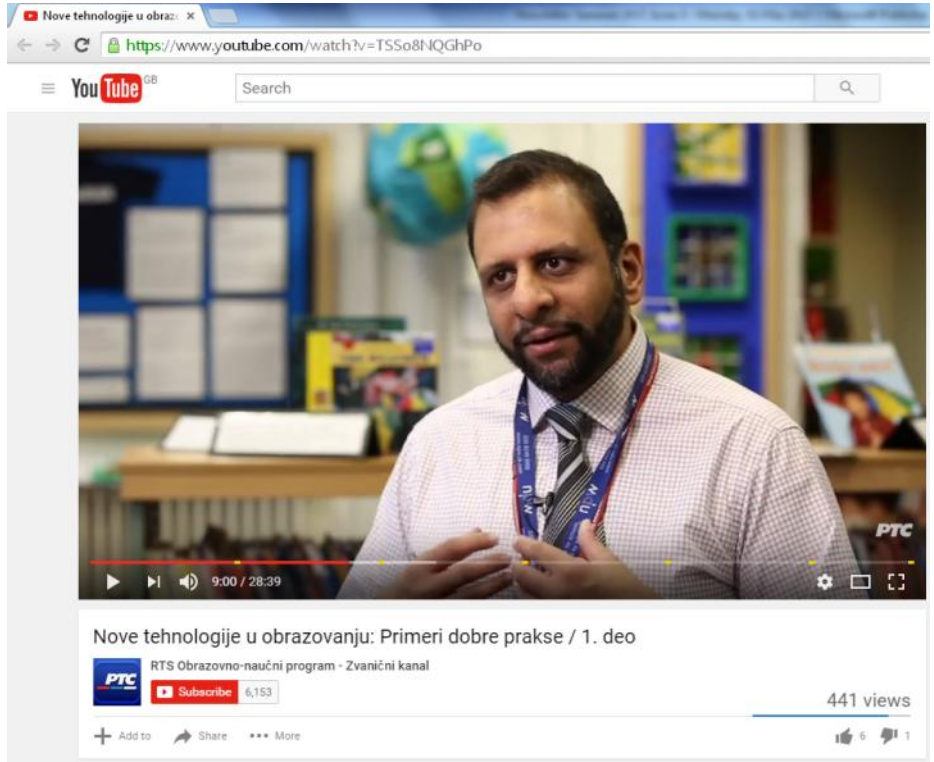
Sandringham Head Teacher, Robert Cleary, and NPW Head of Education ICT and Transformation, Asif Mangera can be seen in the clip on Youtube.

The Serbian crew also spoke with parents and staff at the school and observed pupils during computing lessons.

The clip has been translated and over-dubbed for broadcast but Asif spoke knowledgably of the benefits of harnessing technology in education and explained the importance of establishing successful groundwork through the 4C's of:

- Creativity and Innovation
- Critical Thinking and Problem Solving
- Communication
- Collaboration

The broadcast can be seen at: <https://www.youtube.com/watch?v=TSSo8NQGhPo>



## Spam emails

**We are aware that there are scam (Phishing) e-mails that are being sent from email addresses that have not originated from NPW purporting to be from NPW members of staff.**

NPW encourages you to be vigilant to these emails and please do not divulge any information or click on any links. If possible, please report them as SPAM to your computer

service provider.

Some good practice on protecting yourself from scam emails and where you think an email is suspicious:

- Check the Sender email Address first and not just the Sender's name (even this is not completely fool proof however, it's a starting point)
- Do not click on any links or open

attachments

- Do not divulge any information either by replying or via websites
- Do not send on the message to other people unless requested for security and support purposes
- Report as Spam where possible
- If in doubt, contact the sender by alternate means to provide assurance

# Advertising in the NPW Newsletter

## The NPW Newsletter

Publishes the latest teaching and support vacancies every week during term time, the NPW Newsletter provides education updates, news from schools and from NPW.

## Benefits of advertising

Distributed to schools, reaching over **7,000** staff, and available on the NPW website, [www.npw.uk.com](http://www.npw.uk.com), it reaches a potential readership of more than **8,000** each week. Placing your advert and vacancies in the Newsletter and online at [NPW Jobsgopublic](http://NPW_Jobsgopublic), you receive the benefit of effective target marketing at prices starting from **£11.50 per week** for event or product adverts.

## NPWho?

NPW is a respected provider of high quality, professional education support services and provides a one stop shop. Experienced staff work in collaboration with you to provide bespoke solutions that free up leadership time and allows schools, academies and other educational settings to focus on delivering excellent outcomes for young people.

## For schools, academies and other education settings

For schools that are not NPW members a quarter page event advert costs **£15** per edition or a write-up of an event is an additional **£25**.

## For companies and other organisations

Your advert will be seen by more than 8,000 readers, made up of our subscribers and over 100 schools in East London.

We welcome companies promoting products and services. If your proposal meets publication standards then an advertorial article or flyer in the NPW Newsletter can be arranged. Current prices are as follows:

Size	Cost	
	Edition (1)	Month (4)
<b>Full page</b> 240x180 mm	£190.00	£700.00
<b>Half page</b> 180x118mm	£95.00	£350.00
<b>Quarter Page</b> 90x118mm	£47.50	£175.00
<b>Eighth page</b> 90x59mm *for 12 weeks	£11.50	£126.00*

## Advert artwork

Advert artwork is preferred in JPEG format. However, if necessary, other formats can be accepted.

To advertise in the NPW Newsletter please send your proposal or any enquiries to [newsletter@npw.uk.com](mailto:newsletter@npw.uk.com) or call **020 8249 6963**

Subscribe to receive the NPW Newsletter to your inbox weekly [here](#)

Any queries? Stories or events for publication? Advertising a school vacancy or service?

**Contact us at:** [newsletter@npw.uk.com](mailto:newsletter@npw.uk.com)

Schools can also publicise vacancies online at [NPW Jobsgopublic](http://NPW_Jobsgopublic) and in the NPW Newsletter by contacting [adverts@npw.uk.com](mailto:adverts@npw.uk.com)

## First Aid Training

First Aid courses are delivered by Strong Roots Training. Unlike some training providers, their courses are regulated by Quasafe, an Ofqual recognised Awarding Organisation, established by experts in the First Aid training industry, strict limits apply on the number of trainees on courses at any one session.

**First Aid training dates are as follows:**

- **Visit Leader First Aid Session (1 Day)** Monday, 02 October 2017
- **Paediatric First Aid (2 day)** Monday, 5 - Tuesday, 6 June 2017 | Monday, 25 - Tuesday, 26 September 2017
- **First Aid at Work (3 day)** Monday, 8 - Wednesday, 10 May 2017 | Monday, 19 - Wednesday, 21 June

- **First Aid at Work Refresher (2 days)** Monday, 15 - Tuesday, 16 May 2017 | Monday, 26 - Tuesday, 27 June 2017
- **Combined First Aid at Work plus Paediatric Training (3 Days)** Monday, 13 - Wednesday, 15 November 2017
- **Emergency First Aid Training (1 day)** Please contact
- **QA Level 2 Award in Cardiopulmonary Resuscitation and Automated External Defibrillation (QCF)** Please contact



For costs and to book onto this session or to enquire about one-day Emergency First Aid Training and bespoke first aid training delivered at your school please contact [firstaidtraining@npw.uk.com](mailto:firstaidtraining@npw.uk.com).

## Procurement training

Everyone loves to save the school money, especially as budgets are now coming under more and more pressure. With this in mind, NPW is offering you a half day interactive information session on Thursday, 6 July 2017 at Francis House to analyse opportunities to save your school money so precious resources can be used elsewhere.

This will be a "Brunch Session" from 09:00 - 13:00 which will include 3 separate workshops from different procurement sectors as well as with brunch refreshments included.

Schools that have purchased NPW Procurement and Contracting Service, you are automatically entitled to a free place. Should you require an additional place, the cost is £99.00 (plus VAT).

If you wish to reserve a place on this course, please email [trainingsms@npw.uk.com](mailto:trainingsms@npw.uk.com) or telephone 020 8249 6971.

## Role of the Educational Visits Co-ordinator

**Now more than ever it is vital that Visit Leaders are able to react to emergencies when away from the school on educational visits.**

It is crucial that all schools have a designated member of staff to co-ordinate Educational Visits (of all types). This one-day session, delivered by Alan Merry, will cover all the legal responsibilities for schools around educational visits, and will give specific training to EVCs using a range of strategies including discussion, presentation and workshop activities.

**Date:** Wednesday, 27 September 2017

**Time:** 09:30 – 15:30

**Venue:** Francis House

**Cost:** free for Members (cancellation/non attendance fee applies)/£149.00 Non Members (lunch included)

To reserve a place on this training session above please email [Jenny Mwangura](mailto:Jenny.Mwangura)

NPW is pleased to supply Emergency Action Cards to member schools. Each card provides you with crucial information to follow, in quick reference step-by-step format, when the unexpected occurs, with space to enable you to record action taken.

Prices start at 50p/card (excl. pp), to order a batch of Emergency Action Cards or to discuss your requirements, contact NPW on 020 8249 6971 or at [trainingsms@npw.uk.com](mailto:trainingsms@npw.uk.com)

## Fire Warden Training

The Regulatory Reform (Fire Safety) Order 2005 requires employers to have a strategy to evacuate people (staff, visitors and children) within the building. This course will provide you with a Fire Legislation overview and teach you about the common causes of fire.

Topics covered include:

- Fire prevention and your role in the event of a fire
- What to do if a fire breaks out and how people react in fire situations
- Emergency evacuation procedures
- Safety features within buildings and Safe evacuation and fire assembly
- Basic principles of fire
- Legislation and fire risk assessment requirements
- Control measures to minimise the risk of fire
- Structural measures to prevent spread of fire and smoke
- Fire detection, fire warning and fire fighting equipment
- Requirements for fire plans & Emergency evacuation procedures.
- How to use fire extinguishers

**Date:** Thursday, 25 May 2017

**Time:** 09:00 - 12:00 (please arrive 08:45 for registration)

**Venue:** Francis House, 760 Barking Road, Plaistow, London E13 9PJ

**Cost:** £39.95

Please email [trainingsms@npw.uk.com](mailto:trainingsms@npw.uk.com) to book a place.

## Legionella and asbestos risk in schools

Following the success of the first session, NPW is running a briefing to help you manage the risks of Legionella and asbestos in your school.

Head teachers have a responsibility to maintain a clean, safe educational environment. The session will include information on what legionella is and how it spreads; what is expected of you and how to fulfil those requirements; you will be briefed on the latest asbestos issues and how to write an asbestos management plan.

**Date:** Friday, 6 October 2017

**Time:** 10:00 - 12:00

**Venue:** Francis House, 760 Barking Road, Plaistow, E13 9PJ

**Cost:** £45

To reserve a place on this session please email [trainingsms@npw.uk.com](mailto:trainingsms@npw.uk.com).

## Manual Handling

NPW and Strong Roots Training are pleased to announce the addition of the Manual Handling course to the current suite of training on offer.

The Manual Handling Operations Regulations define manual handling as "any transporting or supporting of a load (including the lifting, putting down, pushing, pulling, carrying or moving thereof) by hand or by bodily force". This half-day course will show staff the correct technique for manual handling that avoids accidents and injury.

**Date:** Friday, 24 November 2017

**Venue:** Francis House, 760 Barking Road, Plaistow, E13 9PJ

**Time:** 13:00 - 16:00

**Cost:** £70 members/£80 non-members

For further information and to book onto the session contact [trainingsms@npw.uk.com](mailto:trainingsms@npw.uk.com).



**Day Care for Key workers employed by the London Borough of Newham.**

**20% discount for parents employed by Newham Schools.**



**Day Care for children from birth to 5 years old.**

**We are open from 7:30am-6:30pm.**

**Salisbury Primary School**

**495 High Street North**

**Manor Park E12 6TH**

For enquiries or to book a visit, please email:  
[caroline.paxton@salisbury.newham.sch.uk](mailto:caroline.paxton@salisbury.newham.sch.uk)





Have you seen our new website?  
[www.lneastmathshub.org.uk](http://www.lneastmathshub.org.uk)

## London North East Maths Hub Conference: Mastery in Mathematics – The Journey

The London North East Maths Hub is very pleased to announce its first Conference of 2017 on the 25th May 2017. Debbie Morgan will return to explore the national picture with mastery in mathematics for primary and secondary schools and update us with the priorities and what we can expect given the DfE's announcement of £41 million for primary mastery.

Join us for Debbie's keynote as well as a closer look at the impact of mastery in the LNE region. You will also have the opportunity to take part in one of three workshops before closing with a summary on implementing change in schools.

**Choice of workshops – please select one at the time of booking:**

Workshop 1	Workshop 2	Workshop 3
<i>Primary Mastery in action – Katie Blaydes (LNE Maths Hub Teaching for Mastery Lead)</i>	<i>England China exchange – Louise Foulkes and Debra Nemhara – (LNE Mastery Specialists)</i>	<i>Mastery in the Early Years – Sue Gifford (Principal Lecturer – Roehampton University)</i>
Sharing of mastery lesson plans Pupils' work TRG material	Experiences of the exchange Y2 or Y6 lesson sequences, planning, pupil outcomes	What does Mastery in the EY look like?

National Teaching School  
 co-ordinated by:



National College for  
 Teaching & Leadership



**£ Event cost**  
**FREE**

**Event date**  
 Thursday 25th May 2017

**Time**  
 09:00 - 13:00

**Audience**  
 Primary and Secondary  
 Headteachers and Senior  
 Leaders

**Booking**  
 To book a place please  
 complete and return the  
 booking form to: Fahmida at  
[admin@lneastmathshub.org.uk](mailto:admin@lneastmathshub.org.uk)

**Additional info**  
 Lunch & refreshments will be  
 provided.

**Please Note:** Should you need  
 to cancel, please give 72 hours  
 notice or a £75 admin fee will  
 be charged.

Please use public transport  
 when possible as we cannot  
 accommodate you in the staff  
 car park.

Parking permits can be  
 purchased from the school if  
 required.

**Venue:** Elmhurst Primary School, Upton Park Road, London, E7 8JY.

## Bar Modelling across KS1 and KS2 - (Cohort 3)

The London North East Maths Hub is pleased to offer this very popular course on Bar Modelling once again. Delegates will learn how to develop a whole school approach to mathematical problem-solving using the bar model as the basis for enabling pupils to tackle problems.

One of the key learning principles behind the success of Singapore maths is the bar model. Bar modelling is used to support pupils with visualising mathematical concepts when solving problems. Using bar models, children can access some highly complex problems with relative ease.

Beginning with handling actual objects, children learn how to translate information into visual models which can then be manipulated to solve problems. Through the use of bar models, children can understand almost any concept in maths, including multiplication, division, ratio, proportion and even algebra.

### The Trainer:

Jack Corson is a primary maths Specialist Leader of Education and the maths leader at Nelson Primary school where he is leading the implementation of Singapore maths across the whole school. He is an NCETM Professional Development Accredited Lead and is currently coordinating an action research programme in collaboration with the UCL Institute of Education and several primary and secondary schools across East London.

### Delegates will:

- Understand the underpinning principles of bar modelling
- Understand the importance of part-whole relationships when solving mathematical problems
- Understand the different types of bar models
- Know how to introduce bar modelling to each year group
- Have a clear understanding of the progression in bar modelling strategies through years 1-6
- Leave with a bank of resources and strategies to use across KS1 and KS2

National Teaching School  
 co-ordinated by:



National College for  
 Teaching & Leadership

315	$315 - 185 =$
185    ?	$185 + ? = 315$

?	$185 + 315 =$
185    315	$? - 185 = 315$

### Course cost

**FREE**  
 (normally costs £350)

### Course dates

8th June 2017  
 29th June 2017

### Time

09:00 - 15:30

### Audience

KS1 and KS2 teachers

### Booking

To book a place please complete and return the booking form to: Fahmida at [admin@lneastmathshub.org.uk](mailto:admin@lneastmathshub.org.uk)

### Additional info

Lunch & refreshments will be provided.

**Please Note:** Should you need to cancel, please give 72 hours notice or a £75 admin fee will be charged.

Please use public transport when possible as we cannot accommodate you in the staff car park.

Parking permits can be purchased from the school if required.

**Venue:** Elmhurst Primary School, Upton Park Road, Forest Gate, London, E7 8JY.



## Everyday maths through everyday provision

Children are born naturally mathematical, so why is it sometimes so difficult to observe children being mathematical? Why do so many of us think we are 'bad' at maths and how does this subconsciously affect the provision, experiences and opportunities we provide for young children who are starting their mathematical learning journey?

Delegates will have opportunities to:

- Explore how maths can be promoted through continuous provision inside and outside in the enabling EYFS environment.
- Consider the vital role of the adult in supporting mathematical learning and talk.
- Think reflectively about the mathematical opportunities offered to children in their care and ways to enhance and improve it further.
- Consider and challenge the negative attitudes sometimes perceived about mathematics and consider how this affects young children and the provision offered.

### Target audience:

EYFS teachers.

### Trainer:

Elaine is the founding member of "Keeping Early Years Unique", a social media group, committed to promoting the very best, child centred, early years practice. She began her career over 20 years ago as a Nursery Nurse before moving into teaching. Elaine is currently teaching at Friars Primary School and Nursery in Shoeburyness, Essex as EYFS and Year One Leader. She has led significant changes in her role over the past three years, and the school is now becoming recognized locally and also nationally for its child centred, play based approach. Elaine has also worked as an EYFS adviser at Southend-On-Sea LA, where her particular focus was raising the profile of maths. She now works as a freelance Early Years consultant and specialises in delivering training, workshops and keynote speeches focusing on mathematical development. She is the co-author of the popular Everyday Maths Through Everyday Provision and The Building Blocks Of Maths (both published by Routledge). Elaine is passionate about the power of play to make maths real, exciting, inspiring and accessible for children and the adults that support them.

National Teaching School  
 co-ordinated by:



National College for  
 Teaching & Leadership



### Course cost

£195

### Course date

16th June 2017

### Time

09:00 - 15:30

### Booking

To book a place please complete and return the booking form to: Fahmida at [admin@lneastmathshub.org.uk](mailto:admin@lneastmathshub.org.uk)

### Additional info

Lunch & refreshments will be provided.

**Please Note:** Should you need to cancel, please give 72 hours notice or a £75 admin fee will be charged.

Please use public transport when possible as we cannot accommodate you in the staff car park.

Parking permits can be purchased from the school if required.

**Venue:** Elmhurst Primary School, Upton Park Road, Forest Gate, London, E7 8JY.



## Supporting Young People in the Secondary Education Setting

**Facilitator:** Catherine Munns

- Lead Training and Development Co-ordinator and Counsellor, Brentwood Catholic Children's Society (BCCS)
- Team Leader, Child and Adolescent Mental Health Service (CAMHS) (2008-2015)

Catherine studied at the Tavistock Clinic and has a Post-Graduate Diploma in children's mental health. She is also a fully qualified Counsellor with extensive experience of working with children, adolescents and families. During her role as Team Leader at CAMHS, Catherine began to deliver training to schools.

**Co-Facilitator:** Louise Picton

Counsellor and Clinical Supervisor at the Brentwood Catholic Children's Society (BCCS), Louise has worked in schools for 16 years in an educational and therapeutic capacity.

Schools are increasingly challenged with understanding the complexity of children and young people's emotional health and wellbeing. In addition to supporting pupils' emotional health and wellbeing, schools are also tasked with the responsibility of promoting academic achievement.

This half-day Workshop is aimed at all Secondary School staff with a view to empowering you "to be part of the response". The focus of this workshop will be on:

(a) Identifying and understanding the unconscious processes children and young people engage us in, and the ways in which we can respond; and

(b) Promoting healthy staffing bodies by supporting staff to understand the complex unconscious processes which we can become engaged, and immersed, in.

Helping staff to navigate, and 'tune in' to, the subtleties of challenging and de-skilling interactions with young people will undoubtedly result in the young person responding more positively to their teacher; their setting; and this will translate into their ability to learn. I hope that the additional upshot of understanding such interactions will be that your staff will feel calmer, self-aware, upskilled, and in a better position to help.

*Feedback from recent workshops run by Catherine Munns:*

*'Excellent course. Highly recommended to other colleagues who work within schools or other child-centred professions.'*

*'This is one of the best training courses I've attended in the last three years.'*

*'Catherine was very tuned into how we were feeling and gave excellent targeted support for us.'*

*'Well put together ... I felt very confident in Catherine's knowledge and ability.'*

"Schools need to have a clear awareness of the extent and nature of mental health problems in children and young people and of their responsibility to be part of the response, not least because these problems do not go away. Half of lifetime mental illness starts by the age of 14."

Partnership for wellbeing in schools (2015)

### Key information...

<b>Dates</b>	10 <sup>th</sup> May 2017 ; 20 <sup>th</sup> September 2017
<b>Timing</b>	9:30am – 12:30pm
<b>Venue</b>	St Edward's Catholic Primary School, Upton Park, E13 9AX
<b>Cost</b>	£80 per delegate
<b>For payment and booking</b>	Please contact our Teaching School Administrator on 0208 472 4337 or email her at <a href="mailto:jeanneth.facto@st-edwards.newham.sch.uk">jeanneth.facto@st-edwards.newham.sch.uk</a>

St. Edward's Catholic Primary Teaching School Alliance

**Deputy Head Teacher and Teaching School Lead**

St. Edward's Catholic Primary Teaching School  
Green Street, Upton Park, London E13 9AX  
Email : info@st-edwards.newham.sch.uk

Required for September 2017

Group 3, NOR 472  
Salary: Leadership Group Scale: 9-13

St Edward's is a vibrant, multi-cultural Teaching School with a strong Catholic ethos embedded in all we do. We are proud of our positive, caring atmosphere and strong commitment to learning, inclusion and the arts. We have a reputation for creating a visually stimulating learning environment to which all staff contribute. As a Teaching School, we work closely with an alliance to support other schools within Newham, neighbouring Local Authorities and across the Diocese of Brentwood.

Due to the promotion of our Teaching School Lead to headship, the governors of St Edward's are looking to appoint an enthusiastic and inspirational Deputy Head, who is a practicing Catholic; has a passion for teaching and learning

plus be able to further develop our Teaching School Alliance.

The successful candidate will:  
Be a practicing Catholic, with a clear vision and belief in Catholic Education.  
Be committed to ensuring that every child has the best outcomes achievable from their education.  
Have the ability to continue the strategic development of the school and Teaching School.  
Have a commitment to working collaboratively with colleagues, parents and governors.  
Have the ability to inspire the very best learning and teaching through exemplar classroom practice and subject knowledge.  
Be an excellent communicator.  
Have excellent mentoring skills.  
Have a proactive "can do" approach to tasks.  
Have a vocational attitude to work.

We can offer you:

- An 'outstanding' school with a reputed history for excellence.
- A strong SLT, plus a friendly, committed and dedicated staff team.
- Children who are motivated, aspirational and enthusiastic about their learning.
- Supportive parents, governors and parish community.
- Effective professional development to support you on your path to headship.

This is a great opportunity for the right candidate to become part of a successful and highly motivated team.

We welcome visits from applicants. Please contact the school by telephone or email to arrange an appointment with Christopher Mabey- Headteacher

Application form and further details please apply on line at <http://ats-npw.jobsgopublic.com/vacancies/view/31721-deputy-head-teacher?source=1296-npw-newsletter>

For technical enquires please call 020 8249 6946. For any other enquiries please contact the school directly.

**Closing date: Friday 5th May 2017**

**Shortlisting date: Tuesday 9th May 2017**

**Interview date: Tuesday 16th May 2017**

The schools in Newham are committed to safeguarding and promoting the welfare of children and young people and expect all staff and volunteers to share this commitment. A disqualification declaration questionnaire maybe required for this post.

**Class Teacher with Leadership Responsibility for Mathematics - TLR 2C**

Ravenscroft Primary School  
Carson Road  
London  
E16 4BD  
Required for September 2017

Salary MPS TLR 2C

Ravenscroft Primary School is seeking to appoint a highly effective and reflective classroom practitioner. Candidates should be experienced and have a commitment to raising attainment across the school to ensure that all pupils succeed. They should be highly motivated with a desire to

continually develop their own leadership and management skills. Ravenscroft Primary School is a very special school where we combine outstanding standards of educational attainment (ranking with the highest attaining primary schools in the country) with a wide range of extra-curricular opportunities. Ravenscroft is growing rapidly – we are now a three form entry school with a provision for children with autism. We place great emphasis on supporting our pupils to develop their resilience and on encouraging them to become aspirational. We welcome visits from prospective candidates. Please contact the school office to arrange.  
Tel: 020 7476 2454

Please apply online at: <http://ats-npw.jobsgopublic.com/vacancies/view/32752-class-teacher-with-leadership-responsibility-for-mathematics?source=1269-npw-newsletter>

**Closing date: 12 noon, Monday 15th May 2017**

**Interviews: Monday 22nd May 2017**

We are committed to the safeguarding and the welfare of children and young people and expect all our staff to share this commitment.

## Assistant Head Teacher with responsibility for English

Calverton Primary School

Required for September 2017  
Pay Range: L9-L13

Calverton Primary School is a growing two/three form entry school which prides itself on its high level of inclusion and positive atmosphere for learning.

We are looking to appoint an outstanding leader to manage and lead English across the school. The Assistant Head teacher will be the lead professional responsible for managing the implementation, monitoring and evaluation of strategies and systems developed to promote and support children's well-being.

We offer:

- Motivated, friendly children with high standards of behaviour.
- An ethos of commitment to raising standards.
- Exciting opportunities

### Resilience Training Lead

London Borough of Newham  
(Leadership Point 10 - 14)

The Innovative Big Lottery Funded HeadStart Preventative Mental Health programme in Newham is committed to the delivery of evidence based approaches which promote emotional resilience in 10-16 year olds at risk of developing mental health difficulties.

As part of the HeadStart Newham programme delivery team, we are looking for someone with the skill set, passion and experience to facilitate transformational change in how schools support the emotional resilience of vulnerable pupils. We are seeking to employ or second a full time or part time senior education lead (between 4-5 days a week, negotiable based on experience) for this exciting opportunity. They will be trained to deliver the Academic Resilience Approach developed in partnership with YoungMinds, across Newham schools.

We are looking for a senior school leader who will be able to:

for professional development. • A supportive Governing Board and parents who work in partnership with the school. • A friendly vibrant staff • Car park available for staff • Good transport links just minutes from the school

We ask that you are:

- An outstanding classroom practitioner with experience across the Primary phase.
- An experienced team leader, who is innovative and creative. Have good subject knowledge in English.
- Up to date with recent national English developments with regards to English
- Eager to work as part of a Senior Leadership Team dedicated to the continuous raising of standards and achievement.
- Committed to school improvement and to ensuring that all children reach their true potential.

Visits to the school are welcomed. Please contact the school for

Facilitate the Academic Resilience Approach to secondary schools at an individual school level. Through ongoing expert coaching and training to different staff groups, build whole school staff competency to identify vulnerable pupils and support them to develop a number of resilience competencies including aspiration, self-esteem and school and community connection.

Support schools through a service improvement/organisational development approach to develop and implement new policies, initiatives and ways of working which explicitly promote resilience in more and less vulnerable pupils.

Facilitate regular resilience Community of Practice meetings in each neighbourhood to share practice between HeadStart schools and collect ongoing school feedback on the programme.

We will offer you:

- The opportunity to be accredited in delivering emotional and resilience training in schools and the chance to lead delivery of a specific intervention model.

further details or to arrange a visit on 0207 476 3076.

Please apply online at: <http://ats-npw.jobsgopublic.com/vacancies/view/32484-assistant-head-teacher?source=1154-npw-newsletter>

**Closing date: 5th May 2017**  
**Shortlisting: 10th May 2017**  
**Interview: 15th – 17th May 2017**

Headteacher: Mrs. Caroline Crompton

Calverton School is committed to safeguarding and promoting the welfare of children and young people and expects all staff and volunteers to share this commitment. The School has a strong commitment to achieving equality of opportunity in both services to the community and the employment of people and expects all employees to understand and promote its policies in their work.

- Training and support from national specialist organisation YoungMinds and the University of Brighton.
- Ongoing professional development as an essential aspect of the role.

The role will start at the beginning of September 2017 and contracts will be offered on a 1-2 year fixed term basis initially.

For further information please contact the HeadStart Operational Manager, Holly Jones at [Holly.Jones@Newham.gov.uk](mailto:Holly.Jones@Newham.gov.uk) or on 0203 373 1587

Please apply online at: <http://ats-npw.jobsgopublic.com/vacancies/view/32767-resilience-training-lead?source=1112-npw-newsletter>

**Closing date for applications: Sunday 21st May**  
**Interviews (to include a pre-prepared presentation): Wednesday 24th May & Thursday 25th May**

The council is committed to safeguarding and promoting the welfare of children. All posts are subject to pre-employment checks, references will be sought and successful candidates will need to undertake an enhanced DBS check.

**Full time Senior Teacher for Early Years – autism spectrum disorder**  
Newham Children and Young People’s Service – Access and Inclusion

LANGUAGE, COMMUNICATION & INTERACTION SERVICE (LCIS)  
School House, Lathom Junior School, Lathom Road, London E6 9DU  
Telephone 0208 325 4527

Required for September 2017  
Grade: Leadership 5 - 9

Newham’s Language, Communication and Interaction Service is a well-established and highly effective inclusion support service, which works with children and young people with autism, social communication difficulties and specific language disorder, and in close partnership with their schools and families, across EYs, primary and secondary mainstream settings.  
This is an opportunity for an outstanding specialist Early Years teacher to join our dynamic multi-professional team of teachers, speech and language therapists and SEN practitioners, to help shape the future of inclusion for children and young people with autism in Newham.

We are looking for someone who can:

Take a lead responsibility for co-ordinating, developing and implementing the delivery of specialist support and training to early years settings and families of children aged 0 – 4 years with autism  
Ensure the team works effectively with nursery heads, setting staff, families and other agencies, to promote the development, inclusion and achievement of young children with autism  
Line manage staff within the team responsible for delivering the Early Years service

You will be:  
An experienced, enthusiastic and creative teacher with experience of autism in the Early Years, SEN and disability, and inclusion  
Confident about planning and delivering training to a high standard, to a range of audiences  
Able to challenge, motivate and inspire teachers, TAs, parents/ carers and other professionals  
A good communicator, skilled in managing staff and building relationships with colleagues and families

We can offer you:  
The opportunity to work within a dedicated specialist team of professionals.  
Working in partnership with exciting, inspiring and culturally diverse communities of children and their families.  
Welcoming inclusive schools and early year’s settings, with high

expectations and aspirations for all children.  
Clear structures for support, supervision, appraisal and professional development.  
A well- resourced service base with training, meeting and office facilities.

Newham is vibrant inner city borough in the heart of East London with a young, friendly and cosmopolitan community. It is recognised by OFSTED as one of the fastest improving authorities, with rising academic standards, and a established record of inclusion and commitment to equal opportunities.

We welcome and encourage a visit to the team to find out more about our work. To arrange a visit or to discuss this post further please contact:

Judy Roux, Group Manager , 0208 325 4527 or  
judy.roux@newham.gov.uk

Please apply online <http://ats-npw.jobsgopublic.com/vacancies/view/32308-senior-teacher-early-years---autism-spectrum-disorder?source=1112-npw-newsletter>

**Closing date for applications: Friday 5th May 2017**  
**Interviews will be held on: Tuesday 16th May 2017**

**Programme Manager and Partnership Tutor**  
SCITTELS

Salary: Leadership Scale 5 – 9 Full time

SCITTELS is looking to appoint a dynamic, innovative and dedicated Programme Manager to lead our outstanding teacher training programmes.

The role includes  
Leading the strategic direction of an already outstanding SCITT to new and exciting prospects  
Monitoring the quality of provision in order to sustain and enhance high quality outcomes for trainees  
To build positive relationships and lasting partnerships with schools in

Newham and neighbouring boroughs  
To lead a motivated and committed team of tutors and professionals  
To oversee the smooth running of SCITTELS and all programmes  
To model best practice of training

Prior experience of Initial Teacher Training is preferred, but not essential. For an informal discussion or to visit us at Colegrave Primary, where we are based, please contact:  
Hazel.dorrington@colegrave.newham.sch.uk or  
tahreem.hussain@colegrave.newham.sch.uk or call 0208 534 0243  
(Colegrave Primary School and ask

for Hazel, Tahreem or Caroline Lane)

Please apply online at <http://ats-npw.jobsgopublic.com/vacancies/view/32735-scittels-programme-manager?source=1105-npw-newsletter>

**Closing date and shortlisting: Friday 12th May 2017 12 noon**  
**Interviews: Friday 19th May 2017**

The schools in Newham are committed to safeguarding and promoting the welfare of young people and expect all staff and volunteers to share this commitment.

**Senior Leader**

Portway Primary School  
Leading Learning Trust

Job starts: Sept 2017 or sooner  
Salary: MPS/UPS + TLR 2c (Inner London)  
Contract type: Full time  
Contract term: Permanent

LEARNING FOR ALL!

We are seeking to appoint highly motivated Senior Leader to join our dynamic leadership team. This position is to Lead Year 5 and a subject (to be negotiated).

We can offer you:  
Quality first professional development;  
Curious children, who love learning;  
A supportive, forward thinking, and dedicated team of colleagues;  
An energetic and sociable environment to work and play!

We welcome applications from experienced leaders who will:  
Model and disseminate high quality teaching to secure pupil outcomes;  
Value professional development and be enthusiastic about taking risks;  
Implement creative approaches to learning and to inspire others;  
Be resilient, with a desire to progress within a school leadership role.

Visits to the school are essential.

To arrange a visit please contact a member of the Leadership Team on 020 84727142, or email us at [hr@portway.newham.sch.uk](mailto:hr@portway.newham.sch.uk).

Leadership Team:  
Jacqui Waine – Head teacher  
Scott Chudley -Deputy Head teacher  
Marsha Constable- Deputy Head teacher  
Further information about our school can be found on our website

- <http://portway.leadinglearningtrust.org>  
Application form and further details please apply on line at <http://ats-npw.jobsgopublic.com/vacancies/view/31251-senior-leader?source=1097-npw-newsletter>  
For technical enquires please call 020 8249 6946. For any other enquiries please contact the school directly.

**Closing Date: 5th May 2017**  
**Interviews: w/b: 8th May 2017**

Portway Primary School is committed to safeguarding and promoting the welfare of children and expect all our staff to share this commitment. All staff are subject to a satisfactory enhanced DBS check as well as qualifications and reference checks. A disqualification declaration questionnaire maybe required for this post.

**EYFS and KS1 Teachers and Subject Leaders (to be negotiated)**

Portway Primary School  
Leading Learning Trust

Job starts: Sept 2017  
Salary: MPS/UPS + TLR (Inner London)  
Contract type: Full time  
Contract term: Permanent

LEARNING FOR ALL!

We are seeking to appoint highly motivated EYFS and KS1 teachers/ Subject Leaders (to be negotiated) to join our dynamic staff team.

We can offer you:

Quality first professional development;  
Curious children, who love learning;  
A supportive, forward thinking, and dedicated team of colleagues;  
An energetic and sociable environment to work and play!  
We welcome applications from experienced teachers or NQTs who will:  
Model and disseminate high quality teaching to secure pupil outcomes;

Value professional development and be enthusiastic about taking risks;  
Implement creative approaches to learning and to inspire others;  
Be resilient, with a desire to progress within a school leadership role.

Visits to the school are essential.

To arrange a visit please contact a member of the Leadership Team on 020 84727142, or email us at [hr@portway.newham.sch.uk](mailto:hr@portway.newham.sch.uk).

Leadership Team:  
Jacqui Waine – Head teacher  
Scott Chudley -Deputy Head teacher  
Marsha Constable- Deputy Head teacher

Further information about our school can be found on our website - <http://portway.leadinglearningtrust.org>

Application form and further details please apply on line at <http://ats-npw.jobsgopublic.com/vacancies/view/31256-eyfs-%2526-ks1-teachers-%2526-subject-leaders-%2528to-be-negotiated%2529?source=1097-npw-newsletter>

For technical enquires please call 020 8249 6946. For any other enquiries please contact the school directly.

**Closing Date: 5th May 2017**  
**Interviews: w/b: 8th May 2017**

Portway Primary School is committed to safeguarding and promoting the welfare of children and expect all our staff to share this commitment. All staff are subject to a satisfactory enhanced DBS check as well as qualifications and reference checks. A disqualification declaration questionnaire maybe required for this post.

## Teacher Required

### Calverton Primary School

Required for September 2017

Are you a good Teacher looking to work in a vibrant and expanding primary school in East London? The school has great support from senior members of staff and a strong leadership team, who are welcoming to new staff. This is a permanent contract.

**About the Role**  
Teacher Full time class responsibility with support from a Teaching Assistant  
MPS + Inner London Allowance + Golden Handshake  
TLRs available in Maths or Computing

**About the School**  
Two / Three form entry primary school  
Committed to professional development for staff  
Rated 'Good' by Ofsted with continuous improvements  
Purpose-built classrooms with latest technology

Good transport links just minutes from the school  
Car Park available for staff  
Friendly, vibrant staff  
Motivated children with high standards of behaviour

In order to be considered for this role, the successful Teacher will need to meet the following criteria:  
Bachelor of Education/ PGCE / or equivalent teaching degree  
Must have proven experience teaching the UK curriculum  
Eligible to work in the UK (must have valid visa)  
Recent classroom-based references and valid DBS/police checks  
NQT's welcome to apply  
As well as being part of this school's community, you also have access to:  
On-going CPD workshops; Phonics, EAL, Behaviour Management, Safeguarding, SEND and the latest ideas and innovation for outstanding English and Maths learning  
Competitive pay rates that are negotiable based on experience  
Regular social events

Interested in Applying?  
Visits to our school are warmly welcomed. Please contact the school to make an appointment on 0207 476 3076.  
No agencies please.

**Closing date: Midday 5th May 2017**

Please apply online at: <http://ats-npw.jobsgopublic.com/vacancies/view/32270-teacher?source=1154-npw-newsletter>

To apply you must be eligible to work in the UK and meet all national safeguarding criteria. Due to the high volume of applications received, please note only suitable candidates will be shortlisted.

Calverton School is committed to safeguarding and promoting the welfare of children and young people and expect all staff and volunteers to share this commitment. A disqualification declaration questionnaire will be required for this post.

## Experienced Reception Teacher

Maryland Primary School & Children's Centre  
Gurney Road E15 1SL  
Tel: 020 8534 8135/4426 Fax: 020 8534 4426  
E-mail:  
[info@maryland.newham.sch.uk](mailto:info@maryland.newham.sch.uk)

(from Sept 2017)

Maryland Primary School is a two-form entry school where teachers feel valued, supported and motivated. Behaviour is outstanding and we were graded 'GOOD' with many outstanding features in the OFSTED inspection in 2013.

We are looking for an excellent, committed Reception practitioner who will extend and build on current good practice. Candidates will, ideally, have one or two years' experience.  
There is much that makes Maryland unique:  
-Curriculum innovators.

-Independent research projects and initiatives that improve standards. See school website 'Our initiatives'.  
-Stable staffing –all but one classroom teacher was a NQT in the school. Long-serving support staff.  
-HT and the rest of the leadership team train, coach, moderate and mentor externally.  
-Nurture staff ambition and provide CPD to realise that ambition. We also foster an environment where potential is recognised, highlighted and encouraged.  
-Model school for RWI since 2006.  
-Model school for Google Education  
-2016 Newham debate winners. Awards for choir, nature garden, dance troupe.  
-wE-PUBLISH website dedicated to publishing pupils' writing <http://www.marylandwepublish.org/>  
-High level of parental engagement and satisfaction.  
-Cluckingham Palace where our beloved hens provide us with eggs and learning opportunities.  
-RHS Award winning Nature's Garden – our rich resource for

outdoor learning. Also offered as a resource to other schools.  
-Prevailing environment of calm and common purpose and a place children enjoy coming to every day.

We welcome visits from potential candidates. Please call 020 8534 8135 to arrange an appointment. The schools in this authority have a commitment for Safeguarding Children and this post is subject to an enhanced DBS check and references.

If shortlisted, references will be sent for before interview. If called to interview, candidates will need to bring photo identification to the interview.

Please apply online at: <http://ats-npw.jobsgopublic.com/vacancies/view/32738-reception-teacher?source=1122-npw-newsletter>

**Closing date for applications is Friday 12th May.**

Please check our website for more information.

01/05/2017



NPWschoolservices



@NPWnews

**Teaching opportunities**

Vicarage Primary School  
Vicarage Lane  
E6 6AD  
Tel: 020 8472 1010/020 8472 0674  
Email:  
info@vicarage.newham.sch.uk  
W: www.vicarage.newham.sch.uk

For September 2017  
TLRs may be available depending on experience  
School roll 892 pupils  
Vicarage is a large (4 form-entry), vibrant and culturally diverse primary school where pupils across the school make very good progress.  
We are looking for:  
Experienced and creative teachers who can bring a range of skills and ideas to work with us in enabling

our children to be the best they can be in all areas of school life.  
Teachers who are motivated and inspired to secure the academic achievement and emotional well-being of every child  
Teachers who want to make a positive contribution to school improvement  
We can offer:  
Passionate, committed staff with high expectations of all our pupils in all areas of school life  
Supportive parents and governors  
A positive, welcoming ethos  
An excellent opportunity for professional development  
Visits to the school are warmly welcomed and encouraged; for appointments please contact the school office on 020 8472 1010/0674 or email at info@vicarage.newham.sch.uk.

Please apply online at: <http://ats-npw.jobsgopublic.com/vacancies/view/32742-teaching-opportunities?source=1094-npw-newsletter>

**Closing date: 18th May 2017**  
**Interviews: Week beginning Monday 22nd May 2017**

The schools in Newham are committed to safeguarding and promoting the welfare of children and young people and expect all staff and volunteers to share this commitment. The successful candidate will be required to undergo enhanced checks with the Disclosure and Barring Service.

NPW: managing recruitment on behalf of Newham Schools

**Teacher of Science**

Little Ilford School  
Headteacher – Ian Wilson

Learning Together Achieving  
Together Succeeding Together

'Little Ilford is an Outstanding school'  
'Teaching over time is outstanding'  
Ofsted 2012

REQUIRED SEPTEMBER 2017

We require an enthusiastic high calibre teacher who has exceptional subject knowledge.

The successful candidate will:  
Teach creative and exciting science lessons to a range of abilities. A specialism in physics is an advantage.  
Through your teaching, develop the students' ability to fully apply high level thinking skills to solve challenging problems  
Play a full and active role in the continual development of high quality teaching and learning in science.  
We will:  
Provide high quality continual professional development

Support and develop you to become an outstanding teacher  
Deliver an excellent NQT programme if necessary  
Provide working partnership opportunities with other schools / departments  
Provide you with an ethos where all adults are learners who take risks in order that they achieve excellent results for our students

Little Ilford is an oversubscribed multicultural school with high expectations of students and staff. It is an exciting place to work and develop, where creativity and innovation is nurtured. We have extremely challenging targets for attainment and progress and the focus and determination to realise them. In October we moved into a brand new building with wonderful facilities.

Please apply online at <http://ats-npw.jobsgopublic.com/vacancies/view/32845-teacher-of-science?source=1113-npw-newsletter>

To obtain further information please see the vacancy section of our website  
www.littleilford.newham.sch.uk or contact Debbie Silvestri on 020

8928 3548 /email  
d.silvestri@littleilford.org  
We welcome applications from NQTs.

**Closing Date 3pm on Thursday 11th May 2017**

Little Ilford School, Browning Road  
Manor Park, London E12 6ET

The school is committed to safeguarding and promoting the welfare of children and young people and expects all staff and volunteers to share this commitment. An enhanced DBS/CRB check is required for all successful candidates.



**Teaching Opportunities****Boleyn Trust**

Exciting opportunities to join the Boleyn Trust with outstanding schools  
Required for September 2017

Newly Qualified Teachers – EYFS, KS1 and KS2

Experienced KS1 and KS2 Teachers

Learning Support Teacher – Autism Specific

We can offer:

Highest quality CPD

Leadership progress and TLR opportunities  
International opportunities  
Great staff social network  
Specialised teacher support with MFL, PE, Music and Chess  
Arrange a visit with a leadership team member and see for yourself.

Please contact Tollgate Primary School for further information.  
Margaret.patient@boleyntrust.org

Please apply online at: <http://ats-npw.jobsgopublic.com/vacancies/view/32773-teachers?source=1248-npw-newsletter>

**Closing date:12th May 2017**

**Interviews and Teaching Observations: Friday 19th May 2017**

The schools in Newham are committed to safeguarding and promoting the welfare of children and young people and expect all staff and volunteers to share this commitment.

**Teacher of Design & Technology****Little Ilford School**

Headteacher – Ian Wilson

Learning Together Achieving Together Succeeding Together

'Little Ilford is an Outstanding school'

'Teaching over time is outstanding' Ofsted 2012

REQUIRED SEPTEMBER 2017

We require an enthusiastic high calibre teacher who has strong subject knowledge.

The successful candidate will:  
Teach creative and exciting DT lessons to a range of abilities.  
Be able to teach Resistant Materials to a high standard at GCSE.  
Through your teaching, develop the students' ability to fully apply high level thinking skills to solve challenging problems  
Play a full and active role in the continual development of high quality teaching and learning in DT.  
We will:  
Provide high quality continual professional development  
Support and develop you to become an outstanding teacher  
Deliver an excellent NQT programme if necessary  
Provide working partnership opportunities with other schools / departments

Provide you with an ethos where all adults are learners who take risks in order that they achieve excellent results for our students

Little Ilford is an oversubscribed multicultural school with high expectations of students and staff. It is an exciting place to work and develop, where creativity and innovation is nurtured. We have extremely challenging targets for attainment and progress and the focus and determination to realise them. In October we moved into a brand new building with wonderful facilities.

Please apply online at <http://ats-npw.jobsgopublic.com/vacancies/view/32849-teacher-of-design-%2526-technology?source=1113-npw-newsletter>

To obtain further information please see the vacancy section of our website  
[www.littleilford.newham.sch.uk](http://www.littleilford.newham.sch.uk) or contact Debbie Silvestri on 020 8928 3548 /email [d.silvestri@littleilford.org](mailto:d.silvestri@littleilford.org)  
We welcome applications from NQTs.

**Closing Date 3pm on 11th May 2017**

Little Ilford School, Browning Road  
Manor Park, London E12 6ET

The school is committed to safeguarding and promoting the welfare of children and young people and expects all staff and volunteers to share this commitment. An enhanced DBS/CRB check is required for all successful candidates.

**KS2 Class Teacher**

Gallions Primary School  
Required: September 2017

Are you an excellent classroom practitioner seeking a new challenge? With a passion for the highest standards in teaching and learning, are you seeking to join an ambitious and innovative school where all pupils are able to succeed and flourish? If so, come and speak to us!

Gallions Primary School is a vibrant, happy and successful school serving a richly diverse community in the heart of East London. Following internal promotions, we now have two vacancies for enthusiastic teachers to join our team. More specifically, we are looking to employ dynamic, forward-looking KS2 practitioners with the determination to make a real difference. We are seeking teachers who:

Are excellent practitioners with the desire to keep learning  
Are able to motivate and inspire pupils through relevant and engaging learning opportunities  
Have a keen commitment to working creatively, coupled with the desire and ability to drive standards  
Are great team players with excellent communication and interpersonal skills  
For the right teachers we can offer:  
An opportunity to make a positive impact  
Fantastic children who strive to achieve their best  
A supportive and enthusiastic team and a commitment to your professional development  
A TLR for a subject or team leadership depending on skills and experience  
Both experienced teachers and NQTs are welcome to apply for these positions and we would encourage informal visits from prospective applicants for a tour of the school and an initial

conversation with the headteacher. Please contact Gilda Tafilak, HR Coordinator. Telephone: 020 7476 1252 option 3 or email [gtafilaku@gallions.newham.sch.uk](mailto:gtafilaku@gallions.newham.sch.uk) to arrange this.

Also visit [www.gallions.newham.sch.uk](http://www.gallions.newham.sch.uk) for further information about the school.

The schools in Newham are committed to safeguarding and promoting the welfare of children and young people and expect all staff and volunteers to share this commitment.

Apply online: <http://ats-npw.jobsgopublic.com/vacancies/view/32782-ks2-class-teacher?source=1247-npw-newsletter>

**Closing date: Friday 5th May 2017 (5pm)**  
**Interviews: W/C Monday 15th May 2017**

**Teacher of English & Media**

Little Ilford School  
Headteacher – Ian Wilson

Learning Together Achieving  
Together Succeeding Together  
'Little Ilford is an Outstanding school'  
'Teaching over time is outstanding'  
Ofsted 2012

REQUIRED SEPTEMBER 2017

We require an enthusiastic high calibre teacher who has strong subject knowledge.

The successful candidate will:  
Teach creative and exciting English and Media lessons to a range of abilities.  
Be able to teach both subjects to a high standard at GCSE.  
Through your teaching, develop the students' ability to fully apply high level thinking skills to solve challenging problems  
Play a full and active role in the continual development of high quality teaching and learning in English and Media.  
We will:

Provide outstanding continual professional development with accreditation for several internal courses  
Support and develop you to become an outstanding teacher  
Deliver an excellent NQT programme if necessary  
Provide working partnership opportunities with other schools / departments  
Provide you with an ethos where all adults are learners who take risks in order that they achieve excellent results for our students

Little Ilford is an oversubscribed multicultural school with high expectations of students and staff. It is an exciting place to work and develop, where creativity and innovation is nurtured. We have extremely challenging targets for attainment and progress and the focus and determination to realise them. In October we moved into a brand new building with wonderful facilities.

Please apply online [http://ats-npw.jobsgopublic.com/vacancies/view/32853-teacher-of-english-%](http://ats-npw.jobsgopublic.com/vacancies/view/32853-teacher-of-english-%2526-media?source=1113-npw-newsletter)

[2526-media?source=1113-npw-newsletter](http://ats-npw.jobsgopublic.com/vacancies/view/32853-teacher-of-english-%2526-media?source=1113-npw-newsletter)

To obtain further information please see the vacancy section of our website [www.littleilford.newham.sch.uk](http://www.littleilford.newham.sch.uk) or contact Debbie Silvestri on 020 8928 3548 /email [d.silvestri@littleilford.org](mailto:d.silvestri@littleilford.org)  
We welcome applications from NQTs.

**Closing Date 3pm on 11th May 2017**

Little Ilford School, Browning Road  
Manor Park, London E12 6ET

The school is committed to safeguarding and promoting the welfare of children and young people and expects all staff and volunteers to share this commitment. An enhanced DBS/CRB check is required for all successful candidates.

**Class Teacher**

RONEC—Ronald Openshaw Nursery Education Centre  
RONEC is a large and vibrant nursery school which is based in Stratford on the edge of the Olympic Park. We are a 120 place setting and are also resourced for children with Profound and Multiple Learning Disabilities (PMLD).

We are looking to recruit an excellent class teacher for September 2017 to work alongside a strong team of teachers and nursery nurses to lead one of our classes and also take on a curriculum responsibility for an area of the EYFS.

Are you looking to develop your skills and experience in an early years settings? Would you like to further your career by receiving excellent CDP opportunities?

The successful candidate should:  
Be passionate about Play and the Early Years Curriculum.  
Enjoy working as part of a team.  
Have a creative approach to teaching to ensure an inclusive approach.  
Be committed to inclusion

NQT's are also welcome to apply. This is a fantastic opportunity for an Early Years Teacher to develop

their career further within a skilled and supportive environment.

We welcome and encourage visits. To arrange a visit please contact the school.

Please apply online at <http://ats-npw.jobsgopublic.com/vacancies/view/32785-teacher?source=1172-npw-newsletter>

**Closing date for application: 15.05.17**  
**Interviews: Thursday 25.05.17**

**Teacher of English**

Little Ilford School  
Headteacher – Ian Wilson

Learning Together Achieving  
Together Succeeding Together

'Little Ilford is an Outstanding school'  
'Teaching over time is outstanding'  
Ofsted 2012

REQUIRED SEPTEMBER 2017

We require an enthusiastic high calibre teacher who has strong subject knowledge.

The successful candidate will:  
Teach creative and exciting English lessons to a range of abilities.  
Be able to teach English to a high standard at GCSE.  
Through your teaching, develop the students' ability to fully apply high level thinking skills to solve challenging problems  
Play a full and active role in the continual development of high quality teaching and learning in English.  
We will:  
Provide outstanding continual professional development with accreditation for several internal courses  
Support and develop you to become an outstanding teacher  
Deliver an excellent NQT programme if necessary

Provide working partnership opportunities with other schools / departments  
Provide you with an ethos where all adults are learners who take risks in order that they achieve excellent results for our students

Little Ilford is an oversubscribed multicultural school with high expectations of students and staff. It is an exciting place to work and develop, where creativity and innovation is nurtured. We have extremely challenging targets for attainment and progress and the focus and determination to realise them. In October we moved into a brand new building with wonderful facilities.

Please apply online at <http://ats-npw.jobsgopublic.com/vacancies/view/32858-teacher-of-english?source=1113-npw-newsletter>

To obtain further information please see the vacancy section of our website  
[www.littleilford.newham.sch.uk](http://www.littleilford.newham.sch.uk) or contact Debbie Silvestri on 020 8928 3548 /email [d.silvestri@littleilford.org](mailto:d.silvestri@littleilford.org)  
We welcome applications from NQTs.

**Closing Date 3pm on 11th May 2017**

Little Ilford School, Browning Road  
Manor Park, London E12 6ET

The school is committed to safeguarding and promoting the welfare of children and young people and expects all staff and volunteers to share this commitment. An enhanced DBS/CRB check is required for all successful candidates.

## Teacher of Design, Technology and Art

Little Ilford School  
Headteacher – Ian Wilson

Learning Together, Achieving Together, Succeeding Together

REQUIRED FOR SEPTEMBER 2017  
Mainscale

This is a fantastic opportunity to teach in a well led, collaborative and supportive faculty. Little Ilford is a friendly, inclusive and oversubscribed school in Newham making a big difference to the lives of our diverse student community. We have a strong reputation and high expectations of both students and staff and consider this to be an exciting place to work and develop, where creativity and innovation are nurtured. Our targets for attainment and progress are challenging, but staff have the focus and determination to realise them for the benefit of our students. We really know our students, and focus on them as individuals. Pastoral systems are strong and we value a curriculum offer and activities that educate the whole child.

As a school we are absolutely committed to ensuring that all staff have access to comprehensive professional development and have developed an exciting and impactful programme designed to offer training that makes a real difference. We value a good home/work balance and do what we can to support our staff in this respect.

We are looking for a committed, enthusiastic and high calibre teacher who has exceptional subject knowledge in DT and art to join our energetic and dynamic team. You will lead a team of teachers, ensuring that the quality of teaching and learning in DT and art is outstanding, keeping up to date with curricular developments and ensuring that the subjects are popular and successful within the option choices. You will engage and inspire our students in the subjects allowing them to make outstanding progress and achieve strong results.

We will support and develop you to become an outstanding teacher and provide working partnership opportunities with other schools and departments. We are an aspirational, reflective and creative

learning community where all adults are learners who take risks in order to achieve excellent results for our students.

We look forward to your application.

Please apply online at <http://ats-npw.jobsgopublic.com/vacancies/view/32864-design-technology-and-art-teacher?source=1113-npw-newsletter>

To obtain further information or for an informal discussion please contact Debbie Silvestri on 020 8928 3548 /email d.silvestri@littleilford.org

**The closing date is 11th May 2017**

Little Ilford School, Rectory Road, Manor Park, London E12 6JB

The school is committed to safeguarding and promoting the welfare of children and young people and expects all staff and volunteers to share this commitment. An enhanced DBS check is required for all successful candidates.

## Outstanding MPS Class Teacher

John Scurr Primary School  
'BE THE BEST THAT YOU CAN BE'  
[http://](http://johnscurrprimary.weebly.com/)

johnscurrprimary.weebly.com/  
(1yr fixed term contract)  
Required from September 2017  
We are looking for an outstanding, inspirational and dedicated teachers to join our team.

NQT's or experienced staff may apply  
Are you an experienced teacher who.....

- Is keen to achieve personal excellence through the provision of outstanding teaching and learning
- Has high expectations of achievement and behaviour with proven success in pupil progress
- Is able to work closely and effectively within a team
- Is a creative teacher who has excellent communication,

organisational and interpersonal skills

- Is committed to working in partnership with children, staff, parents, governors and the wider community

If you are an NQT, are you currently.....

- Undertaking a PGCE or similar Teaching Qualification?
- Demonstrating 'on track' evidence of good to outstanding teaching.
- Have experience of working effectively with children before undertaking your current training?

In return we can offer...

Pupils who are well motivated, enthusiastic, polite and exceptionally well-behaved.  
A supportive and motivated staff and leadership team.  
A commitment to your on-going professional development.

A friendly, welcoming and inclusive school.

Visits to the school welcome – please arrange via email to: head@johnscurr.towerhamlets.sch.uk

For an application pack please visit our website <http://johnscurrprimary.weebly.com/> or contact the PA to the SLT: mdrew7.211@lgflmail.org

**Closing date for completed applications by Midday on Wednesday 17th May 2017**

The School is committed to safeguarding and promoting the welfare of children and expects all staff and volunteers to share this commitment. The successful candidate will require an enhanced DBS clearance.

**Teacher of English**

Newham PRUs

New Directions

Pupil Referral Unit Key Stage 4 with up to 60 pupils on roll.

Storey Centre

Woodman Street

E16 2LS

0207 504 0530

Required September 2017

MPS – Inner London and 1SEN

point

Potential TLR2a

Newham PRUs is seeking to appoint an enthusiastic English teacher. We require a passionate, high calibre teacher who has exceptional subject knowledge to join New Directions.

The successful candidate will:

- Teach creative and exciting English lessons to students with a range of abilities
- Through effective teaching, develop the students' ability to fully

apply high level thinking skills to solve challenging problems

- Play a full and active role in the continual development of high quality teaching and learning in English across Newham PRUs
  - Achieve at least good or better teaching on a constant basis
- New Directions is a Pupil Referral Unit (PRU) located in the London Borough of Newham. The school offers a range of educational programmes for young people who have social, emotional and behavioural difficulties. Our aim is to work together with our students to overcome barriers they may have to engaging with education and learning. Teaching and support across the school is determined through an individualised response to each individual pupil's learning needs.

Working within a PRU setting can be emotionally challenging, but is highly rewarding. We passionately believe in giving young people every opportunity to learn and

succeed in our friendly, inclusive and supportive school.

We are committed to safeguarding and promoting the welfare of children and young people and expect all staff and volunteers to share this commitment.

Please apply online at: <http://ats-npw.jobsgopublic.com/vacancies/view/32900-english-teacher?source=1308-npw-newsletter>

**Application closing date:**

**Monday 8th May 2017**

**Interview: Wednesday 17th May 2017**

Visits are warmly welcomed. For further information and/or to arrange a visit please contact Irvin Walters on the number above.

**Teacher of Food Technology**

Newham PRUs

New Directions

Pupil Referral Unit Key Stage 4 with up to 60 pupils on roll.

Storey Centre

Woodman Street

E16 2LS

0207 504 0530

Required September 2017

MPS – Inner London and 1SEN

point

Newham PRUs is seeking to appoint an enthusiastic Food Technology teacher. We require a passionate, high calibre teacher who has exceptional subject knowledge to join New Directions.

The successful candidate will:

- Teach creative and exciting Food Technology lessons to students with a range of abilities
- Through effective teaching, develop the students' ability to fully apply high level thinking skills to solve challenging problems
- Play a full and active role in the continual development of high

quality teaching and learning in Food Technology across Newham PRUs

- Achieve at least good or better teaching on a constant basis
- New Directions is a Pupil Referral Unit (PRU) located in the London Borough of Newham. The school offers a range of educational programmes for young people who have social, emotional and behavioural difficulties. Our aim is to work together with our students to overcome barriers they may have to engaging with education and learning. Teaching and support across the school is determined through an individualised response to each individual pupil's learning needs.

Working within a PRU setting can be emotionally challenging, but is highly rewarding. We passionately believe in giving young people every opportunity to learn and succeed in our friendly, inclusive and supportive school.

We are committed to safeguarding and promoting the welfare of children and young people and

expect all staff and volunteers to share this commitment.

Please apply online at: <http://ats-npw.jobsgopublic.com/vacancies/view/32904-food-tech-teacher?source=1308-npw-newsletter>

**Application closing date:**

**Monday 8th May 2017**

**Interview: Friday 19th May 2017**

Visits are warmly welcomed. For further information and/or to arrange a visit please contact Irvin Walters on the number above.

**Teacher of Maths**

Newham PRUs  
New Directions  
Pupil Referral Unit Key Stage 4 with  
up to 60 pupils on roll.  
Storey Centre  
Woodman Street  
E16 2LS  
0207 504 0530

Required September 2017

MPS – Inner London and 1SEN  
point  
Potential TLR2a

Newham PRUs is seeking to appoint an enthusiastic Maths teacher. We require a passionate, high calibre teacher who has exceptional subject knowledge to join New Directions.

The successful candidate will:

- Teach creative and exciting Maths lessons to students with a range of abilities
- Through effective teaching, develop the students' ability to fully

apply high level thinking skills to solve challenging problems

- Play a full and active role in the continual development of high quality teaching and learning in Maths across Newham PRUs
  - Achieve at least good or better teaching on a constant basis
- New Directions is a Pupil Referral Unit (PRU) located in the London Borough of Newham. The school offers a range of educational programmes for young people who have social, emotional and behavioural difficulties. Our aim is to work together with our students to overcome barriers they may have to engaging with education and learning. Teaching and support across the school is determined through an individualised response to each individual pupil's learning needs.

Working within a PRU setting can be emotionally challenging, but is highly rewarding. We passionately believe in giving young people

every opportunity to learn and succeed in our friendly, inclusive and supportive school. We are committed to safeguarding and promoting the welfare of children and young people and expect all staff and volunteers to share this commitment.

Please apply online: <http://ats-npw.jobsgopublic.com/vacancies/view/32906-maths-teacher?source=1308-npw-newsletter>

**Application closing date:**  
**Monday 8th May 2017**  
**Interview: Thursday 18th May 2017**

Visits are warmly welcomed. For further information and/or to arrange a visit please contact Irvin Walters on the number above.

**Nurture Teacher**

Newham PRUs  
New Directions  
Pupil Referral Unit Key Stage 4 with  
up to 60 pupils on roll.  
Storey Centre  
Woodman Street  
E16 2LS  
0207 504 0530

Required September 2017

MPS – Inner London and 1SEN  
point

Newham PRUs is seeking to appoint an enthusiastic Nurture Teacher. We require a passionate, high calibre teacher who has exceptional subject knowledge to join New Directions.

The successful candidate will:

- Teach creative and exciting Nurture lessons to students with a range of abilities
- Through effective teaching, develop the students' ability to fully apply high level thinking skills to solve challenging problems
- Play a full and active role in the continual development of high

quality teaching and learning in Nurture across Newham PRUs

- Achieve at least good or better teaching on a constant basis

New Directions is a Pupil Referral Unit (PRU) located in the London Borough of Newham. The school offers a range of educational programmes for young people who have social, emotional and behavioural difficulties. Our aim is to work together with our students to overcome barriers they may have to engaging with education and learning. Teaching and support across the school is determined through an individualised response to each individual pupil's learning needs.

Working within a PRU setting can be emotionally challenging, but is highly rewarding. We passionately believe in giving young people every opportunity to learn and succeed in our friendly, inclusive and supportive school. We are committed to safeguarding and promoting the welfare of children and young people and expect all staff and volunteers to share this commitment.

Please apply online at: <http://ats-npw.jobsgopublic.com/vacancies/view/32909-nurture-teacher?source=1308-npw-newsletter>

**Application closing date:**  
**Monday 8th May 2017**  
**Interview: Friday 19th May 2017**

Visits are warmly welcomed. For further information and/or to arrange a visit please contact Irvin Walters on the number above.

**Experienced KS2 Class Teacher**

St James' C of E Junior School  
Required for September 2017  
Dates: Apply by 4 pm, Friday 12th May, 2017

Salary: Main scale, plus a TLR allowance is available for the right candidate

Location: Newham

Contract type: Full Time

Contract term: Permanent

Experienced KS2 Class Teacher

required for September, 2017

St James' C of E Junior School is a vibrant, multicultural, multi-faith, friendly and ever improving school. All visitors to our school comment on our wonderful children and our caring ethos. We are a "good" school (Ofsted, January 2013) and we are proud of our children, the community we serve and the team which is St James'.

We are focused on raising standards through outstanding learning and teaching and we are looking to appoint an outstanding practitioner with a proven record of achieving good progress for the children they teach. This teacher will be committed to continuing and contributing to our positive; warm yet professional team and have at least two years' class teacher

experience. In addition, teachers applying will be enthusiastic, passionate and hardworking individuals that are:

- \* able to demonstrate outstanding teaching skills;
- \* determined to help raise standards;
- \* highly motivated and hardworking;
- \* committed to working flexibly and effectively, as part of a team, in a supportive environment;
- \* a team player, open to coaching and mentoring.

We can offer:

- \* pupils that "...behave well, show a thirst for new knowledge and skills and thrive on the opportunities provided..." (Ofsted, January 2013);
- \* friendly and supportive staff;
- \* a welcoming caring community and a highly motivated professional staff team;
- \* a pleasant working environment;
- \* subject leadership opportunities;
- \* excellent opportunities for professional development.
- \* possible TLR for candidates with suitable experience;
- \* a free car parking space in our school car park;
- \* excellent opportunities for training and development, including

bespoke leadership training; Visits to the school are warmly invited, and actively encouraged. Please make an appointment to meet with the Headteacher, Shirleyann Jones through the school office.

St. James' Junior School is committed to safeguarding and promoting the welfare of children and young people and expects all staff and volunteers to share this commitment. A full DBS disclosure is required.

Please apply online at: <http://ats-npw.jobsgopublic.com/vacancies/view/32791-experienced-ks2-class-teacher?source=1158-npw-newsletter>

**Closing date for applications: 4pm, Friday 12th May, 2017**  
**Interviews and lesson observations will be held Thursday 18th May, 2017.**

For further details please visit our school website at [www.st-james.newham.sch.uk](http://www.st-james.newham.sch.uk) or call Sharon Davis, Office & Finance Manager, for an information pack. St James' CE Junior School Tower Hamlets Road, Forest Gate, London E7 9DA  
Tel: 020 8534 4030  
[www.st-james.newham.sch.uk](http://www.st-james.newham.sch.uk)

**Teacher of English**

Newham PRUs

Tunmarsh School

Pupil Referral Unit Key Stage 3 & 4 with up to 72 pupils on roll.

Tunmarsh Lane London E16 9NB  
0207 504 0531

Required September 2017  
MPS – Inner London and 1SEN point

Newham PRUs is seeking to appoint an enthusiastic English teacher. We require a passionate, high calibre teacher who has exceptional subject knowledge to join Tunmarsh School.

The successful candidate will:

- Teach creative and exciting English lessons to students with a range of abilities
- Through effective teaching, develop the students' ability to fully

apply high level thinking skills to solve challenging problems

- Play a full and active role in the continual development of high quality teaching and learning in English across Newham PRUs
  - Achieve at least good or better teaching on a constant basis
- Tunmarsh School is a Pupil Referral Unit (PRU) located in the London Borough of Newham. The school offers a range of educational programmes for young people who have social, emotional and behavioural difficulties. Our aim is to work together with our students to overcome barriers they may have to engaging with education and learning. Teaching and support across the school is determined through an individualised response to each individual pupil's learning needs.

Working within a PRU setting can be emotionally challenging, but is

highly rewarding. We passionately believe in giving young people every opportunity to learn and succeed in our friendly, inclusive and supportive school.

We are committed to safeguarding and promoting the welfare of children and young people and expect all staff and volunteers to share this commitment.

Please apply online: <http://ats-npw.jobsgopublic.com/vacancies/view/32910-english-teacher?source=1170-npw-newsletter>

**Application closing date: Monday 8th May 2017**  
**Interview: Wednesday 17th May 2017**

Visits are warmly welcomed. For further information and/or to arrange a visit please contact Irvin Walters on the number above.

**Maths Leader**

Nelson Primary School  
Inspiring Ambition, Achieving  
Success

TLR 1A – non-class based

The Head Teacher and Governors of Nelson Primary School are looking to appoint a dedicated, outstanding and inspirational maths leader, with the vision to share in the leadership and continued development and improvement of maths in our ambitious school. The school has successfully implemented the Singapore style of teaching maths using the Maths - No Problem programme. A good working knowledge of the Singapore style of teaching maths is essential for this role.

Applicants should be:

an outstanding teacher able to model consistently good and outstanding classroom practice

emotionally intelligent and approachable with excellent communication skills  
able to interpret data to ensure accurate, rigorous and robust assessment  
a passionate, positive and proactive team leader who has good interpersonal skills  
an innovative, creative and strategic thinker who is able to turn ideas and opportunities into successful practice  
able to organise, motivate and lead others to reach the highest possible standards in this very large school.  
We will offer you:  
enthusiastic and well behaved children who are keen to learn the opportunity to play a significant role in the school's journey towards outstanding  
a committed, dynamic and ambitious senior leadership team  
a dedicated and supportive governing body

a commitment to your professional development  
well trained staff  
The school is committed to safeguarding and promoting the welfare of children and young people and expects all staff and volunteers to share this commitment.

Please apply online at <http://ats-npw.jobsgopublic.com/vacancies/view/32873-maths-leader?source=1307-npw-newsletter>

**Closing date: 10th May 2017**  
**Shortlisting : 12th May 2017**  
**Interview dates : 17th May 2017**

Visits to the school are welcomed and advised. Please call on 020 8472 0642. Please visit our website to find out more about Nelson Primary School  
[www.nelson.newham.sch.uk](http://www.nelson.newham.sch.uk)

**Teacher of Biology**

Newham Collegiate Sixth Form Centre

Start date: September 2017

Salary: MPS/UPS

Location: Newham

Contract type: Full time

Contract term: Permanent

Newham Collegiate Sixth Form Centre (the 'NCS') is a dedicated sixth form centre established by a group of nine Newham 11-16 schools in partnership with Newham Council. The NCS opened in September 2014 in iconic Grade 2 listed buildings on the East Ham Town Hall Civic Complex, having been fully renovated to a high standard with nine new science laboratories and spacious teaching classrooms. Our first year AS results were outstanding with 65% A/B and 85% A/C, and we are predicting A2 results of 85% A/B and 95% A/C. The centre provides a stimulating education and personalised curriculum within a supportive environment in which students are encouraged to stretch themselves to achieve their potential. The NCS offers an academic A Level Curriculum with a

specialism in Sci-ence and Maths, alongside pathways in Hu-manities. The A Level Curriculum and the extra-curricular programme will be focused on preparing students for progression to selective and Russell Group universities.

The NCS is currently looking to appoint an inspirational and motivational teacher of Biology with the ability to deliver high quality lessons and achieve excellent results. This is an exciting opportunity to work with the Head of Sciences/Lead Biologist to establish and design the curriculum and student offer as well as assisting the most able students in Newham and surrounding boroughs achieve their true potential.

The successful candidate for the Biology role will:

Hold DfE Qualified Teacher Status and a relevant undergraduate degree.

Share our vision that there is no ceiling to achievement and believe in the transformational nature of education.

Have experience of teaching A level Biology or demonstrate a strong

desire to develop the skills and knowledge to do so. We also welcome applications from high quality NQTs. Have a proven track record of successful learning and teaching. Have a passion to share their academic interests as part of our innovative super curriculum. Have the ability to draw upon their professional/educational background to demonstrate their ability to successfully teach Biology to A level standard

The role will provide the opportunity to work with the Head of Sciences/Lead Biologist to establish Biology in a dedicated sixth form centre and help build an expert staff team as the NCS grows and develops. We are looking for knowledgeable and expert candidates to start in September 2017.

Please apply online at <http://ats-npw.jobsgopublic.com/vacancies/view/32896-teacher-of-biology?source=1120-npw-newsletter>

**Closing date for applications: Sunday 14th May 2017**  
**Interviews: Week commencing 15th May 2017**



## Primary NQT Pool 2017/18 Newham Schools

NEWHAM, a vibrant cosmopolitan community in the heart of East London, is recognised by Ofsted as "a model for others to follow". As academic standards continue to rise, you'll have the opportunity to work in schools that are committed to developing innovative practice and transforming children's educational experience.

We understand how important the first step in your teaching career is. With this in mind, all NQTs receive an individualised induction programme designed to allow you to pursue your professional

development in a supportive environment. We combine high starting salaries with excellent opportunities for promotion, allowing you to develop your career within the borough. \*NQTs who apply through the pool also receive an extensive set of benefits including a generous Golden Hello payment. You can apply to the pool online today by completing one application form at:

<http://ats-npw.jobsgopublic.com/vacancies/view/24670-newham-schools---primary-nqt-pool-2017-18?source=1112-npw-newsletter>

Successful applicants will be matched to suitable schools. We will

then support you throughout the application process, right through to appointment.

For more information on the process or to find out more about being a NQT in Newham, please visit [www.teachnewham.co.uk](http://www.teachnewham.co.uk).

\*The Golden Hello is not available to NQTs who completed an employment-based training route.

### Secondary NQTs:

For further information about teaching in Newham and details about registering for the secondary database please see: [www.teachnewham.co.uk](http://www.teachnewham.co.uk) or email: [trm@npw.uk](mailto:trm@npw.uk)

### Class teachers Elmhurst Primary School

Upton Park Road  
London E7 8JY  
Tel: 020 8472 1062  
[www.elmhurstprimary.co.uk](http://www.elmhurstprimary.co.uk)  
Headteacher: Mr S. Ahmed  
Email:  
[sahmed@elmhurst.newham.sch.uk](mailto:sahmed@elmhurst.newham.sch.uk)

Required for September 2017 or earlier. Key stage is flexible.

Are you looking for an exciting opportunity with excellent development prospects?

We are a four-form entry, outstanding primary school in East London with wonderful children who are keen to learn. We are ambitious for our pupils and believe in developing the whole child. We teach our children to achieve high academic standards, as well as enabling them to win debating competitions, act in Shakespearean plays and enjoy art visits to Barcelona, Rome and Amsterdam.

Elmhurst is a respected National Teaching School and a Maths Hub, providing excellent training opportunities for our own teachers and others across London. Due to our national profile we attract visitors who come to learn from our

innovative practice. Our school site includes bespoke training rooms and excellent classroom accommodation.

We are seeking to appoint teachers who have:

Outstanding classroom practice or have the potential to develop this  
The desire to develop professionally  
A good academic background

We are able to offer TLR points for the right candidate. NQTs are also welcome to apply. We offer the Inner London Weighting Allowance.

Visits to the school are warmly welcomed- please contact Sukwinder Samra our Head of School on [ssamra@elmhurst.newham.sch.uk](mailto:ssamra@elmhurst.newham.sch.uk)

### We invite applications on a rolling basis.

Application form and further details please apply on line at: <http://ats-npw.jobsgopublic.com/vacancies/view/29811-class-teachers?source=1109-npw-newsletter>

For technical enquires please call 020 8249 6946. For any other enquiries please contact the school directly.

Elmhurst Primary School is committed to safeguarding and promoting the welfare of children. All posts are subject to satisfactory DBS, qualification and reference checks. A disqualification declaration questionnaire maybe required for this post.

**KS2 Teachers and Subject Leaders (to be negotiated)**

Portway Primary School  
Leading Learning Trust

Job starts: Sept 2017

Salary: MPS/UPS + TLR (Inner London)

Contract type: Full time

Contract term: Permanent

LEARNING FOR ALL!

We are seeking to appoint highly motivated KS2 teachers/ Subject Leaders (to be negotiated) to join our dynamic staff team.

We can offer you:

Quality first professional development;  
Curious children, who love learning;  
A supportive, forward thinking, and dedicated team of colleagues;  
An energetic and sociable environment to work and play!

We welcome applications from experienced teachers or NQTs who will:

Model and disseminate high quality teaching to secure pupil outcomes;  
Value professional development and be enthusiastic about taking risks;  
Implement creative approaches to learning and to inspire others;  
Be resilient, with a desire to progress within a school leadership role.

Visits to the school are essential.

To arrange a visit please contact a member of the Leadership Team on 020 84727142, or email us at [hr@portway.newham.sch.uk](mailto:hr@portway.newham.sch.uk).

Leadership Team:

Jacqui Waine – Head teacher  
Scott Chudley -Deputy Head teacher  
Marsha Constable- Deputy Head teacher

Further information about our school can be found on our website - <http://portway.leadinglearningtrust.org>

Application form and further details please apply on line at <http://ats-npw.jobsgopublic.com/vacancies/view/31262-ks2-teachers-and-subject-leaders-%2528to-be-negotiated%2529?source=1097-npw-newsletter>

For technical enquires please call 020 8249 6946. For any other enquiries please contact the school directly.

**Closing Date: 19th May 2017**  
**Interviews: w/b: 22nd May 2017**

Portway Primary School is committed to safeguarding and promoting the welfare of children and expect all our staff to share this commitment. All staff are subject to a satisfactory enhanced DBS check as well as qualifications and reference checks. A disqualification declaration questionnaire maybe required for this post.

NPW, managing recruitment on behalf of Newham Schools

**Key Stage 1 and Key Stage 2 teachers**

St. Francis' Catholic Primary School

Maryland Park, Stratford E15 1HB

Tel: 020 8534 0476

Email: [info@st-francis.newham.sch.uk](mailto:info@st-francis.newham.sch.uk)

Contract type: Full time

Contract term: Permanent

Start date: September 2017

Diocese of Brentwood

required for September 2017:  
MPS + Possible TLR + Inner London Allowance

The Governing Body at St. Francis' Catholic Primary School is seeking to appoint an experienced, talented, dynamic and exceptional teacher to join our good school. The successful candidate will need to demonstrate a commitment to continually improving their practice. We serve a diverse community in the Catholic Parish of St Francis,

Stratford, in the Diocese of Brentwood.

We are seeking to appoint a teacher who is an excellent primary practitioner, who is committed to working flexibly and effectively as part of a team, in a supportive environment, and has high expectations in all areas of school life.

We are looking for someone who:

- can contribute to, and support the aims and ethos of our Catholic school
- has an ability to work well in a team and alongside colleagues
- Have a keen commitment to working creatively with the desire and ability to drive standards
- has excellent knowledge of the National Curriculum
- is able to be reflective about his/ her practice

We can offer you:

- a friendly, supportive staff and governors
- A school with high aspirations

- a developing teaching and learning environment
- excellent CPD opportunities

Visits to our school are warmly welcomed. Please contact the school to make an appointment. Application form and further details please apply on line at <http://ats-npw.jobsgopublic.com/vacancies/view/31661-class-teachers?source=1207-npw-newsletter>

For technical enquires please call 020 8249 6946. For any other enquiries please contact the school directly.

**Closing date for applications: Friday 5th May 2017**  
**Interviews: Week beginning 17th May 2017**

St Francis' Catholic Primary School is committed to safeguarding and promoting the welfare of all our children. All appointments will be subject to a full DBS check and references will be taken up before interview.

**Teachers (NQTs and experienced)**

Eko Trust

For September 2017

At Eko Trust, every member of our community is empowered to learn, to be ambitious and to be resilient. We are recruiting for high quality, dynamic and reflective teachers across our trust, which is made up of 3 different schools; Kaizen Primary School, Gainsborough Primary School and Eleanor Smith School.

Our schools are vibrant and multi cultural centres of learning. Our children are happy and love actively learning. Our children leave with the resilience and motivation to continue their successful learning at the end of Year 6 and through to secondary school. We are proud of our schools and excited by what we can achieve together.

A supportive, practice based, experienced senior leadership team

believe sharing leadership, dismantling hierarchies and saying yes to all good ideas ensure staff succeed with us and move to promotions quickly.

We provide:  
high quality, personalised induction excellent tailored professional development opportunities which enable staff to develop their own practice and impact others nationally  
a highly engaged staff who work hard together and thrive in a happy, friendly environment

We are looking for teachers who:  
strive to make a difference to outcomes for children  
demonstrate good organization, reflection and communication skills  
value teamwork and are able to build strong professional relationships

We are committed to safeguarding and promoting the welfare of children and young people. We expect all staff to share this commitment and to undergo appropriate checks, including DBS.

Eko Trust supports Equal Opportunities Employment. Interviews to take place on during April and May. If this is you, please contact Natasha Groom or Kate Fallan at 0207 473 6890 or [info@ekotrust.org.uk](mailto:info@ekotrust.org.uk) for further information.

Application form and further details please apply on line at <http://ats-npw.jobsgopublic.com/vacancies/view/30393-nqts?source=1099-npw-newsletter>

For technical enquires please call 020 8249 6946. For any other enquiries please contact the school directly.

**Closing date: Ongoing Interviews to take place week commencing 1st May 2017**

If this is you, please contact Natasha Groom or Kate Fallan at 0207 473 6890 or [info@ekotrust.org.uk](mailto:info@ekotrust.org.uk) for further information.

**Class Teachers**

Keir Hardie Primary School

Address: 13 Robertson Road, Canning town London E16 1FZ  
Telephone: 0207 476 1284  
Email: [info@keirhardie.newham.sch.uk](mailto:info@keirhardie.newham.sch.uk)

We are looking to appoint 2 class teachers (KS1 or KS2) for September 2017  
A TLR is available for those with relevant skills and experience  
Keir Hardie Primary is a mainstream two form entry school that serves a multicultural and vibrant community in Canning Town. We are looking to appoint 2 highly motivated and passionate teachers to join our team and continue inspiring our pupils to be lifelong learners. Our aim is to Inspire Excellence by instilling MAGIC learning habits to all our pupils; Motivation, positive Attitude, Gumption, Independence and Communication.

The successful applicants should:

Be outstanding, reflective and enthusiastic classroom practitioners;  
Have high expectations and a commitment to raising standards;  
Be passionate about the education and have high expectations for all pupils  
Enjoy working as part of a team, bring genuine enthusiasm, a passionate desire to make a difference and motivate pupils  
Strong curriculum knowledge and a good understanding of how to challenge pupils  
Be a role model for the school community, with an inspiring approach and a collaborative mindset  
Enjoy learning and love making learning fun for pupils

We can offer you:  
An innovative, dedicated and hardworking team fully committed to raising standards  
Colleagues that thrive on working together and team effort to ensure that all children can succeed at the highest level

A commitment to professional development and training  
Outstanding learning behaviour from highly motivated pupils who have high aspirations  
MAGIC learning habits  
A vibrant learning environment  
Visits to the school are warmly welcomed

Please apply online at <http://ats-npw.jobsgopublic.com/vacancies/view/32387-class-teachers?source=1101-npw-newsletter>

**Closing date for application: 8th May 2017**  
**Interviews: Week Beginning: 15th May 2017**

Keir Hardie Primary School is committed to safeguarding and promoting the welfare of children and expects all staff, visitors and volunteers to sharing this commitment. Following safe recruitment procedures the appointment will be subject to satisfactory references, medical clearance and enhanced DBS checks.

**Experienced Senior Teacher**

**Central Park Primary School**  
Key Stage Leader Position TLR 2C  
KS1 and KS2 Teaching Positions  
with a TLR available for those with  
the right experience.  
Start Date: 1 September 2017.  
We have opportunities for teachers  
looking to be part of a Senior  
Leadership Team within the next 2  
years. We particularly seek to  
appoint experienced teachers  
wanting to lead a core subject  
(particularly English) and be part of  
our Senior Management Team;  
someone flexible to teach any age-  
range is desirable. This  
appointment is unlikely to be class  
based but will involve a teaching  
commitment as a 'Key Stage  
Leader'.  
Due to re-structuring and  
promotions if you feel you have  
other leadership areas to offer we  
would be happy to look at your  
application and consider payment of  
a relevant TLR, in line with our  
school approach. Please outline

what you are interested in leading  
in your application.  
You must have:  
Worked in a school with a proven  
record of successful practice.  
A commitment to raising standards  
in teaching and learning across the  
school.  
The motivation, determination and  
energy to support our desire to  
become an outstanding school.  
The experience, knowledge, skills  
and understanding to lead and area  
(if want to be considered for a  
TLR).  
Prospective candidates are warmly  
encouraged to visit and these can  
be arranged by contacting Alix  
Williams, PA to the Headteacher, on  
the 020 8472 5588 or by email  
alix.williams@centralpark.newham.s  
ch.uk. Further details on our offer  
at Central Park can be found on our  
recruitment page of our school  
website –  
www.centralpark.newham.sch.uk.  
The application form, job  
description and personal

specification can be found on our  
recruitment section.

Please apply online at: <http://ats-npw.jobsgopublic.com/vacancies/view/32680-key-stage-leader---tlr-2c?source=1211-npw-newsletter>

**Closing date: 5 May 2017**  
**Shortlisting: w/b 8 May 2017**  
**Interviews: 12 May 2017**

(An observation of shortlisted  
candidates teaching will part of the  
recruitment process.)

Central Park Primary is committed  
to safeguarding and promoting the  
welfare of children. All posts are  
subject to pre-employment checks,  
references will be sought and  
successful candidates will need to  
undertake an enhanced DBS check.  
More job details, contact  
information & downloads

**Specialist Computing and  
Website Design  
Management Teacher  
Required**

**Colegrave Primary School and  
SCITTELS**

TLR points available to suitable  
candidate

Henniker Road  
London  
E15 1JY  
Telephone: 0208 534 0243  
info@colegrave.newham.sch.uk

Head Teacher: Ms Tahreem Hussain  
Deputy Head Teachers: Miss Nazia  
Ishaq and Mrs Abbie Ojukwu  
Teacher required: September 2017  
We are looking to recruit a  
Specialist Computing and Website  
Design Management Teacher who  
will develop computing across our  
school from Reception to Year 6 as  
well promote the outstanding work  
we do through an innovative and  
creative website. The successful  
candidate will have the benefit of  
working with an excellent  
Computing Curriculum, but we  
would be also be looking for  
someone who is forward thinking

and keen to develop it further as  
the technological landscape widens.  
We are looking to appoint someone  
who has:  
The determination to make a  
difference  
a real interest in technology and  
primary computing  
ability to work with a wide age  
range and levels of ability  
ability to teach computing to a high  
standard  
good and outstanding teaching  
skills  
good communication skills  
good personal organisation skills  
knowledge, skills and commitment  
to support children in their learning  
and staff in their teaching, ensuring  
success for all  
Can work as part of a team  
Colegrave is a three form entry  
Primary School with a resourced  
provision. We serve a multicultural  
and vibrant community in Stratford.  
We have a positive and innovative  
approach and a motivated,  
knowledgeable and friendly staff.

Salary: Inner London Pay Scale  
TLR points are available for suitable  
candidates

Visits to the school are welcome  
and encouraged by arrangement  
with the School Business Manager  
Mrs Caroline Lane.

Application form and further details  
please apply on line at <http://ats-npw.jobsgopublic.com/vacancies/view/30215-computing-teacher?source=1105-npw-newsletter>  
For technical enquires please call  
020 8249 6946. For any other  
enquiries please contact the school  
directly.

**Closing Date: 15th May 2017 at  
Midday**  
**Lesson observations and  
interviews: 18th May 2017**

The schools in Newham are  
committed to safeguarding and  
promoting the welfare of children  
and young people and expect all  
staff and volunteers to share this  
commitment. A disqualification  
declaration questionnaire maybe  
required for this post.

NPW, managing recruitment on  
behalf of Newham Schools

**KS1 Class Teacher**

## Gallions Primary School

Required: September 2017

Are you an excellent classroom practitioner seeking a new challenge? With a passion for the highest standards in teaching and learning, are you seeking to join an ambitious and innovative school where all pupils are able to succeed and flourish? If so, come and speak to us!

Gallions Primary School is a vibrant, happy and successful school serving a richly diverse community in the heart of East London. Following internal promotions, we now have two vacancies for enthusiastic teachers to join our team. More specifically, we are looking to employ dynamic, forward-looking KS1 practitioners with the determination to make a real difference.

We are seeking teachers who:

Are excellent practitioners with the desire to keep learning  
Are able to motivate and inspire pupils through relevant and engaging learning opportunities  
Have a keen commitment to working creatively, coupled with the desire and ability to drive standards  
Are great team players with excellent communication and interpersonal skills

For the right teachers we can offer:  
An opportunity to make a positive impact

Fantastic children who strive to achieve their best  
A supportive and enthusiastic team and a commitment to your professional development  
A TLR for a subject or team leadership depending on skills and experience

Both experienced teachers and NQTs are welcome to apply for these positions and we would encourage informal visits from prospective applicants for a tour of the school and an initial

conversation with the headteacher. Please contact Gilda Tafilak, HR Coordinator. Telephone: 020 7476 1252 option 3 or email [gtafilaku@gallions.newham.sch.uk](mailto:gtafilaku@gallions.newham.sch.uk) to arrange this.

Also visit [www.gallions.newham.sch.uk](http://www.gallions.newham.sch.uk) for further information about the school.

Please apply online at <http://ats-npw.jobsgopublic.com/vacancies/view/32248-ks1-class-teacher?source=1247-npw-newsletter>

**Closing date: Friday 5th May 2017 (5pm)**

**Interviews: W/C Monday 15th May 2017**

The schools in Newham are committed to safeguarding and promoting the welfare of children and young people and expect all staff and volunteers to share this commitment.

**Experienced Teacher**

## Colegrave Primary School and SCITTELS

Henniker Road

London

E15 1JY

Telephone: 0208 534 0243

Email:

[info@colegrave.newham.sch.uk](mailto:info@colegrave.newham.sch.uk)

Head Teacher: Ms Tahreem Hussain

Teacher required: September 2017

TLR points available to suitable candidate

Would you like to work in our exciting and inclusive school, which has a commitment to raising standards for all pupils through outstanding teaching and learning? If you would, then we would like to hear from enthusiastic, inspirational, creative and highly motivated teachers.

Colegrave is a three form entry Primary School with a resourced provision. We serve a multicultural and vibrant community in Stratford. We have a positive and innovative

approach and a motivated, knowledgeable and friendly staff.

We are looking for an outstanding teacher to join us, providing creative and challenging experiences for our children. The candidate will have high expectations for all children and be committed to the school's vision and ethos whilst building on its success.

Salary: Inner London Pay Scale  
TLR points are available for suitable candidates

Visits to the school are welcome and encouraged by arrangement with the School Business Manager Mrs Caroline Lane.

Application form and further details please apply on line at <http://ats-npw.jobsgopublic.com/vacancies/view/30216-experienced-teacher?source=1105-npw-newsletter>

For technical enquires please call 020 8249 6946. For any other enquiries please contact the school directly.

**Closing Date: 15th May 2017 at Midday**

**Short listing: 18th May 2017**

The schools in Newham are committed to safeguarding and promoting the welfare of children and young people and expect all staff and volunteers to share this commitment. A disqualification declaration questionnaire maybe required for this post.

NPW, managing recruitment on behalf of Newham Schools

**Excellent Teachers****Park Primary School**

Required for September 2017

Park Primary School is a happy, exciting and creative place to learn and work. It is an aspirational, caring and popular learning environment with friendly, conscientious staff; a supportive community and Governing Body with caring, confident and positive children too; relationships at Park Primary are exemplary.

We have vacancies/ opportunities available from September 2017. Whether you will be an NQT seeking your first exciting teaching experience; an MPS teacher potentially seeking some responsibility or a UPS teacher ready to be increasingly strategic, we have positions available. We seek to appoint highly motivated and caring teachers who:  
Are excellent practitioners;

Are committed to providing a 'delicious' learning experience for our children;  
Have a genuine belief that all children can and will succeed given the right experiences and opportunities;;  
Have high expectations of the children, themselves and others;  
Have good all-round curriculum knowledge;  
Have outstanding interpersonal skills and place great emphasis on building strong relationships.  
The successful candidates will be:  
Reflective and flexible in approach;  
innovative and creative; caring and passionate; driven and take pride in all that they do.

We can offer you a superb working and learning environment (completion 30.6.17), excellent development opportunities through learning communities and peer to peer support and, we believe most importantly, a happy and

professional learning and working atmosphere.  
Visits to the school are strongly recommended. Please contact the School Office on 020 8534 4065 or via email [natasha.ttoffali@park.newham.sch.uk](mailto:natasha.ttoffali@park.newham.sch.uk) . Please visit [www.park.newham.sch.uk](http://www.park.newham.sch.uk) for further information about us.

Please apply online at <http://ats-npw.jobsgopublic.com/vacancies/view/32194-excellent-teachers?source=1127-npw-newsletter>

**Closing date: 15.5.17**  
**Shortlisting 16.5.17**  
**Interviews and selection process: 18th and 19th May 2017.**

The schools in Newham are committed to safeguarding and promoting the welfare of children and young people and expect all staff to share this commitment.

**Music Leader TLR 2a (negotiable)****Sandringham Primary School**

A very exciting opportunity has arisen for an experienced, dedicated and talented music teacher with QTS to build on the current excellent music practice at Sandringham Primary School. The successful candidate will have a brand new music studio, in a purpose built building, and join an established arts team at Sandringham who are passionate about making a difference to children's lives.

The successful candidate will oversee the Every Child a Musician (Ecam), teach music classes to children from EYFS to Year Six and organise music tuition before, during and after school, and ensure that the arts are at the heart of Sandringham School.

Applicants should have:

- A pedagogical understanding of how children learn
- A proven track record of good or outstanding classroom teaching

- The ability to demonstrate a very high level of musicianship. The ability to play a number of instruments would be an advantage, including the piano
- The ability to work successfully with the specialist teacher's team
- A clear understanding of the building blocks for teaching music; EYFS - Y6
- A desire to develop their leadership skills

We will offer you:

- Enthusiastic and well behaved children who love to come to school
- The opportunity to play a significant role in the school's journey towards outstanding
- A committed, dynamic and ambitious Senior Leadership Team
- A dedicated and supportive Governing Body
- A commitment to your professional development
- Staff discount for childcare at Sandringham Daycare

**Closing date: Friday 12th May**  
**Shortlisting: Tuesday 16th May**

**Interviews: Friday 19th May**  
**Start date: Monday 4th September**

Application form and further details please apply on line at: <http://ats-npw.jobsgopublic.com/vacancies/view/31522-music-leader?source=1178-npw-newsletter>

The school is committed to safeguarding and promoting the welfare of children and young people and expects all staff and volunteers to share this commitment. An enhanced DBS check will be made for the successful applicant.

## General Cover/PPA and Raising Attainment Teacher

Keir Hardie Primary School

Address: 13 Robertson Road,  
Canning town London E16 1FZ  
Telephone: 0207 476 1284  
Email:  
info@keirhardie.newham.sch.uk

Keir Hardie Primary is a mainstream two form entry school that serves a multicultural and vibrant community in Canning Town. We are looking to appoint a PPA/Raising Attainment Teacher to work across the school and continue inspiring our pupils to be lifelong learners. Our aim is to Inspire Excellence by instilling MAGIC learning habits to all our pupils; Motivation, positive Attitude, Gumption, Independence and Communication.

The successful applicant should:  
Have high expectations for all pupils  
Be highly professional, committed to the provision of a creative, broad and balanced curriculum.

Have high expectations, sound curriculum knowledge and the ability to work across the school  
Have experience and a good understanding of strategies to raise attainment.

Be a role model for the school community, with an inspiring approach and a collaborative mindset

Enjoy learning and love making learning fun for pupils

We can offer you:

An innovative, dedicated and hardworking team fully committed to raising standards  
Colleagues that thrive on working together and team effort to ensure that all children can succeed at the highest level  
A commitment to professional development and training  
Outstanding learning behaviour from highly motivated pupils who have high aspirations  
MAGIC learning habits  
A vibrant learning environment  
**Closing date for application:  
8th May 2017**

**Interviews: Week Beginning:  
15th May 2017**

Please apply online at:

<http://ats-npw.jobsgopublic.com/vacancies/view/32393-general-cover-ppa-and-raising-attainment-teacher?source=1101-npw-newsletter>

Keir Hardie Primary School is committed to safeguarding and promoting the welfare of children and expects all staff, visitors and volunteers to sharing this commitment. Following safe recruitment procedures the appointment will be subject to satisfactory references, medical clearance and enhanced DBS checks.

## Class Teachers

### Brampton Primary School

We are seeking to appoint a full-time KS1 teacher for April 2017 or sooner & KS2 teachers for September

You will:

be able to deliver consistently high standards of teaching and learning, or have the potential to develop this  
be able to inspire and motivate all children to have a growth mindset and achieve their full potential  
have a strong academic background  
be somebody who wants to develop their leadership skills (We can offer a competitive salary for the right candidate)

In return for your commitment and enthusiasm, we can offer the opportunity to work alongside a talented team of leaders, teachers, teaching assistants, governors as well as a supportive wider community.

Brampton Primary is a popular, successful and inclusive four-form

entry school set in East Ham. Our children are wonderful and demonstrate their commitment to learning everyday through their outstanding behaviour and hard work. We pride ourselves on being the hub of a diverse local community and we have built excellent relationships with parents and carers. In our most recent Ofsted inspection in November 2011 we were judged to be outstanding, which is where we aspire to stay.

We are committed to safeguarding and promoting the welfare of children and the successful candidates will undergo full DBS checks.

Informal visits are encouraged and welcomed and can be arranged by contacting Julie Ammi, Head's PA/Personnel Manager on the number below.

Application form and further details please apply on line at <http://ats-npw.jobsgopublic.com/vacancies/>

[view/28362-teacher?source=1177-npw-newsletter](http://ats-npw.jobsgopublic.com/vacancies/view/28362-teacher?source=1177-npw-newsletter)

For technical enquires please call 020 8249 6946. For any other enquiries please contact the school directly.

**Closing Date: as soon as vacancies are filled**  
**Interviews: on an ongoing basis**

Applicants will be contacted on an ongoing basis.  
020 8472 0830  
info@brampton.newham.sch.uk

Brampton Primary School and all its personnel are committed to safeguarding and promoting the welfare of children and young persons. This position is subject to an Enhanced Disclosure from the Disclosure and Barring Service and suitable references along with other essential checks.

## Inclusion Manager/SENCO Keir Hardie Primary School

13 Robertson Road, Canning town  
London E16 1FZ  
Telephone: 0207 476 1284  
info@keirhardie.newham.sch.uk

Required for September 2017:  
Inner London pay scale, with a TLR  
depending on experience  
For the appropriate candidate there  
may be the opportunity for this to  
be a Leadership position.

Keir Hardie Primary is a mainstream  
two form entry school that serves a  
multicultural and vibrant community  
in Canning Town. We have a  
commitment to inclusion, to multi-  
agency approaches to meeting the  
needs of our pupils and their  
families. We aim to achieve our  
vision of 'Inspiring Excellence'  
through instilling in our pupils  
MAGIC learning habits; Motivation,  
positive Attitude, Gumption,  
Independence and good  
Communication skills.

We are looking for:

A full-time SENCO/Inclusion  
Manager.  
Candidates with at least 2 years  
experience and SENCO  
qualifications.  
Candidates with consistently good  
and outstanding classroom practice  
across the curriculum  
Candidates with good  
understanding of the principles and  
implementation of inclusion

The main areas of responsibility  
are:  
Identifying learning needs and  
referring children to the relevant  
agencies  
Organising IEP and annual review  
meetings  
Completing paperwork and meeting  
deadlines  
Arranging and leading meetings  
with parents  
Managing and liaising with support  
staff  
Modelling and disseminating high  
quality teaching for target pupils  
Ability to analyse data, set targets  
for improvement and implement  
effective interventions  
Overseeing SEN provision: including  
1-1 support, Speech and Language

Therapist intervention and  
counselling support  
We can offer you:  
An innovative, dedicated and  
hardworking team fully committed  
to raising standards  
Colleagues that thrive on working  
together and team effort to ensure  
that all children can succeed at the  
highest level  
A commitment to professional  
development and training  
Outstanding learning behaviour  
from highly motivated pupils who  
have high aspirations  
MAGIC learning habits  
A vibrant learning environment

Visits to the school are welcome  
and encouraged by arrangement  
with the Head Teacher

Apply online at [http://ats-  
npw.jobsgopublic.com/vacancies/  
view/32688-inclusion-manager-  
senco?source=1101-npw-newsletter](http://ats-npw.jobsgopublic.com/vacancies/view/32688-inclusion-manager-senco?source=1101-npw-newsletter)

**Closing date: 15th May 2017**  
**Interviews: W/B 22nd May**  
**2017**

## KS1, KS2 & EYFS Teachers North Beckton Primary School

We are seeking to appoint full-time  
KS1, KS2 & EYFS teachers for  
September 2017 or sooner.

North Beckton Primary School is  
looking for inspiring, highly  
motivated and experienced KS1,  
KS2 & EYFS Teachers to join our  
dedicated Curriculum Team.  
We are a large, improving primary  
school with over 590 pupils on roll,  
due to grow to 680 by 2018. We are  
located in the London Borough of  
Newham – a vibrant, inner city  
borough just 25 minutes from the  
centre of London, within an  
ethnically diverse local community.  
You will:  
be able to deliver consistently high  
standards of teaching and learning,  
or have the potential to develop this  
be able to inspire and motivate all  
children to have a growth mindset  
and achieve their full potential  
have a strong academic background

be somebody who wants to develop  
their leadership skills (We can offer  
a competitive salary for the right  
candidate)

In return for your commitment and  
enthusiasm, we can offer the  
opportunity to work alongside a  
talented team of leaders, teachers,  
teaching assistants, governors as  
well as a supportive wider  
community.

We are committed to safeguarding  
and promoting the welfare of  
children and the successful  
candidates will undergo full DBS  
checks.

Informal visits are encouraged and  
welcomed and can be arranged by  
contacting Taz Mansuria (SBM); 020  
7473 3344 or  
taz.mansuria@northbeckton.newha  
m.sch.uk

Application form and further details  
please apply on line at [http://ats-  
npw.jobsgopublic.com/vacancies/](http://ats-npw.jobsgopublic.com/vacancies/)

[view/28632-teachers?source=1200-  
npw-newsletter](http://ats-npw.jobsgopublic.com/vacancies/view/28632-teachers?source=1200-npw-newsletter)

For technical enquires please call  
020 8249 6946. For any other  
enquiries please contact the school  
directly on 020 7473 3344 or  
info@northbeckton.newham.sch.uk

**Closing Date: as soon as  
vacancies are filled**  
**Interviews: on an ongoing basis**

Applicants will be contacted on an  
ongoing basis.

The schools in Newham are  
committed to safeguarding and  
promoting the welfare of children  
and young people and expect all  
staff and volunteers to share this  
commitment. A disqualification  
declaration questionnaire maybe  
required for this post.



**SENCO**

North Beckton Primary School

REQUIRED AS SOON AS POSSIBLE

North Beckton Primary School is a multi-cultural primary school that provides education for children within its local area and has additional resourcing for pupils with Profound and Multiple Learning Difficulties (PMLD)

We are looking for a talented and ambitious member of staff, who is dedicated to helping our pupils to reach their full potential. The right candidate needs to be an innovative practitioner who has previous experience of the role within a primary or special needs setting.

We are looking for a SENCO with at least three years teaching experience to join our inclusion team and work closely with the Inclusion Manager. If this sounds like you, we would like to invite you to meet our amazing pupils and staff.

This post consists of teaching pupils with complex needs and other mainstream groups such as speech and language, lego, life skills and many more.

You must:

Be committed to raising standards for all pupils  
Have a knowledge of how to support pupils with complex needs and their families  
Demonstrate experience of liaising with relevant outside agencies  
Have an excellent record of classroom practice and high expectations of all pupils  
Lead by example and inspire, motivate, challenge and support an enthusiastic team of support staff  
Have the ability to lead, manage and work as part of a team  
Have proven experience of analysis and the use of data to monitor the impact of intervention  
Have a commitment to and successful experience of developing the achievement and progress of all pupils  
Hold the National Award for SENCO (desirable)

We can offer:

Strong leadership and support  
Committed staff, pupils and governing body  
A warm, friendly and caring working environment  
Exceptional opportunities for professional development in an inclusive school

Please see the attached job description for full details of the role.

Please look at our website for further information: <http://www.northbeckton.newham.sch.uk/>

We welcome informal visits; please contact Taz Mansuria (SBM) via the school office on 020 7473 3344. Alternatively email; [taz.mansuria@northbeckton.newham.sch.uk](mailto:taz.mansuria@northbeckton.newham.sch.uk)

Application form and further details please apply on line at <http://ats-npw.jobsgopublic.com/vacancies/view/28633-senco?source=1200-npw-newsletter>

For technical enquires please call 020 8249 6946. For any other enquiries please contact the school directly.

**Closing date: as soon as vacancy has been filled**  
**Interviews: on an ongoing basis, applicants will be contacted on an ongoing basis**

The schools in Newham are committed to safeguarding and promoting the welfare of children and young people and expect all staff and volunteers to share this commitment. A disqualification declaration questionnaire maybe required for this post.

**Class Teachers**

Ravenscroft Primary School  
Carson Road  
London  
E16 4BD  
Salary MPS

Required for September 2017

Ravenscroft Primary School is seeking to appoint two effective classroom practitioners. Candidates should be highly motivated, have good interpersonal skills and have a commitment to raising attainment to ensure that all pupils succeed.

Ravenscroft Primary School is a very special school where we combine outstanding standards of educational attainment (ranking with the highest attaining primary schools in the country) with a wide

range of extra-curricular opportunities. Ravenscroft is growing rapidly – we are now a three form entry school with a provision for children with autism. We place great emphasis on supporting our pupils to develop their resilience and on encouraging them to become aspirational.

We welcome visits from prospective candidates. Please contact the school office to arrange.  
Tel: 020 7476 2454

Please apply online at: <http://ats-npw.jobsgopublic.com/vacancies/view/32751-class-teachers?source=1269-npw-newsletter>

**Closing date: 12 noon, Wednesday 17th May 2017**

**Interviews: Wednesday 24th May 2017**

We are committed to the safeguarding and the welfare of children and young people and expect all our staff to share this commitment.

**Class teacher – main scale  
(TLR for relevant  
experience)**

Selwyn Primary School

REQUIRED BY - September 2017

Selwyn Primary School is part of the  
Leading Learning Trust.

Executive Head teacher – Emma  
Nicholls

Please visit our website for further  
information about Selwyn Primary  
School.

We are looking for a practitioner  
with:

Evidence of being a good/  
outstanding teacher

High expectations of pupil  
outcomes

Excellent organisational skills

A strong work ethic and the ability  
to work collaboratively with  
colleagues, parents and governors

The ability to create a stimulating  
and inclusive learning environment  
where all pupils make good and  
better progress

A commitment to own professional  
development

We can offer the right candidate:  
excellent CPD and professional  
development opportunities including  
pathways into furthering your  
school leadership within a vibrant,  
friendly and dedicated school  
community.

Please apply online at: <http://ats-npw.jobsgopublic.com/vacancies/view/33000-class-teacher?source=1285-npw-newsletter>

**Closing date for applications:  
Friday 12th May 2017**  
**Interviews will take place  
during the week commencing:  
Monday 15th May 2017**

Successful candidates will be asked  
to apply for an Enhanced Disclosure  
from the DBS. Further information  
about the disclosure can be found  
at [www.crb.gov.uk](http://www.crb.gov.uk) and in the  
recruitment pack. We are fully  
committed to safeguarding children.

Selwyn is a medium-sized, inclusive  
school for children aged 3 to 11.  
Our school is the sponsor of the  
Leading Learning Trust. There are  
510 pupils on roll including part-  
time nursery pupils. Selwyn is the  
Newham resourced school for deaf  
pupils who are fully integrated into  
mainstream.

Visits to our school are encouraged  
and are most welcome.

**Finance Director****Leading Learning Trust**

3 days per week or equivalent  
Salary - Senior Manager's Pay  
Grade B (£67,259) pro rata.

BASED AT – Portway Primary School, which is part of the Leading Learning Trust. Executive Head teacher – Emma Nicholls  
Please visit our website for further information about the Leading Learning Trust.

Do you have the combination of technical expertise, leadership capability and desire to shape the way in which our Trust manages its finances to ensure the best outcome for all our children? If so, we would love to hear from you.

This senior role is responsible for the strategic financial planning, corporate and commercial management of the Trust. Working as a key member of the leadership team, you will undertake design and management of policies and procedures in the following areas:

Governance  
Internal controls  
Financial management leadership  
Financial control

Along with a CCAB accountancy qualification, you will need strong organisational, project management and planning skills in order to excel in the role. You will also need to demonstrate the following school/academy-specific knowledge and experience:

knowledge and experience of academy financial management systems and processes, as well as knowledge of budget preparation principles and accounting practices; knowledge of the legal framework within which academies operate, including Department for Education legislation, the operation of the Charities Commission and Company Law; experience in influencing and persuading senior leaders in all financial matters; and the desire to work in a multi-site, recently established, multi-academy

trust, to develop and shape our financial practices.

If you think that you are the right person to take on these challenges, you can look forward to working in a supportive, collegiate atmosphere within our vibrant school community.

Please apply online: <http://ats-npw.jobsgopublic.com/vacancies/view/32439-finance-director?source=1097-npw-newsletter>

**Closing date for applications: Friday May 5th 2017**  
**Interviews will take place during the week commencing: Monday 8th May 2017**

Visits to our schools are encouraged and are most welcome.

**Teacher Assistant****New City Primary School**

Turnmarsh Lane  
Plaistow  
E13 9NE

required for June 2017  
32.5 hours per week  
Unqualified Scale 2 point 12-13 -  
£14003.95-£14039.77  
Qualified Scale 3 point 14-17 -  
£14,271.08-£15,088.84

New City Primary School is a three form entry school with a very inclusive ethos.

We need staff that can:  
Demonstrate knowledge and understanding of autism and severe learning difficulties to support children on a one to one basis.  
Work in and out of class and take part in group sessions out of class.  
Capable of dealing positively with challenging behaviour and high levels of need.

Be prepared to support children with personal care.  
Be a reliable team member.  
Have a calm temperament

Be energetic and enthusiastic  
Communicate clearly and have good standards of literacy and numeracy.

This is a challenging but rewarding position that will give you invaluable experience along with support and training. The ideal candidate will have knowledge and interest to pursue their own SEN experience.

Visits to the school are recommended before applying.

Please apply online at <http://ats-npw.jobsgopublic.com/vacancies/view/32664-teaching-assistant?source=1173-npw-newsletter>

**Closing date: Tuesday 9th May**  
**Shortlisted applicant tests: Monday 15th May**  
**Interviews: Thursday 18th May**

We are dedicated to safeguarding and promoting the welfare of children and young people and expect all staff and volunteers to share this commitment.

## Teaching Assistant

### Keir Hardie Primary School

Address: 13 Robertson Road,  
Canning town E16 1FZ  
Telephone: 0207 476 1284  
Email:  
info@keirhardie.newham.sch.uk

Are you passionate about working with young pupils, or simply looking for a new and exciting challenge, if so then Keir Hardie Primary could be the school for you.

We are looking to appoint general teaching assistants and 1:1 SEN teaching assistants to join our team and continue inspiring our pupils to be lifelong learners. We aim to Inspire Excellence through instilling in our pupils the MAGIC learning habits; Motivation, positive Attitude, Gumption, Independence and Communication.

Scale 2 (unqualified) point 11 – £14296.79  
Scale 3(qualified) point 14 - £14530.43  
32.5hrs per week –Term time (39 weeks)  
Fixed one year contract.

We are looking for teaching assistants who are:  
Committed to learning more about pupils with special needs and how best to support them  
Committed to inclusion  
Pupil centered  
Calm under pressure  
Outstanding communication skills  
Organised  
Team players

What we offer:  
Pupils who display exceptional learning behaviours  
A supportive working environment

Excellent CPD opportunities  
Pupils who have high aspirations

We warmly welcome informal visits to the school.  
Please contact 0207 476 1284 to arrange a visit.  
For more information about the role please contact the school office.

Please apply online at <http://ats-npw.jobsgopublic.com/vacancies/view/32834-teaching-assistant?source=597-tes-online>

**Closing date: 10th May 2017**  
**Interview date: Week beginning 15th May 2017**

## Childcare Assistant

### Salisbury Primary School

36hrs, 52 weeks  
£18657 - £19,623

In 2015, Salisbury Primary School opened a Day Care Provision. Our Day Care is for children from 0 to 5 years and open all year round (including holidays) from 7.30am to 6.45pm.

Vacancies have arisen due to some of our staff starting their journey into teaching.

We are therefore seeking exceptional, qualified nursery practitioners for these roles who will join our versatile and passionate early year's team in our baby, toddler and preschool room.

You will need to:

Hold a minimum level 3 qualification in early years and childcare (N.N.E.B, CACHE or equivalent)

Have excellent knowledge and implementation of the EYFS curriculum to inform observations and assessment

Be committed to achieving outstanding outcomes for all children

Communicate effectively with team members, children and parents

We can offer:  
Well resourced, stimulating, modern learning environment  
A welcoming and friendly working atmosphere  
Professional development

The successful applicants will have to meet the requirement of the person specification in order to be offered the post and will be subject to an enhanced DBS check

Please apply online at <http://ats-npw.jobsgopublic.com/vacancies/view/32877-childcare-assistant?source=1219-npw-newsletter>

**Closing date Thursday 11th May 2017**

**Interviews and tasks: Monday 22nd May 2017**

**Temporary Full Time Teaching Assistants**

Woodgrange Infant School

12 month contracts

Sebert Road

London

E7 0NJ

020 8534 2120

info@woodgrange.newham.sch.uk

Start date 4th September 2017

36 hours per week 8.30-4pm

Unqualified £15,836inc, per annum

Qualified £16,095inc, per annum

Do you have experience of working with young children?

Are you looking for a new challenge?

Are you considering a future career in teaching?

We are looking for a number of Teaching Assistants to join our growing team.

You must have:

Experience of working outside the home with children aged 3-7

Energy, enthusiasm and patience

An open mindset- a willingness to try out new ideas and make them work for Woodgrange pupils  
Excellent spoken and written English and good numeracy skills  
A commitment to teamwork and a close partnership with parents and the wider community

A relevant qualification  
Knowledge of special educational needs, particularly Autism or speech and language difficulties  
You might have

A degree  
An interest in becoming a teacher in the future  
We can offer

Wonderful pupils and parents  
Excellent team work  
A pleasant working environment  
The opportunity to develop your skills and expertise

Your role will involve supporting learning in classrooms, in groups or 1:1 under the direction of the class teacher or the Inclusion manager.  
It can be challenging and tiring but is EXTREMELY rewarding!

Visits to the school are warmly welcomed

Please call Sarah Soyler, Headteacher to arrange a time.

Please apply online at <http://ats-npw.jobsgopublic.com/vacancies/view/32881-teaching-assistant?source=1222-npw-newsletter>

**Closing date 12th May  
Interviews 18th May or 19th May**

We are committed to safeguarding and promoting the welfare of children and young people and expect all staff and volunteers to share this commitment.

The successful applicant will be subject to full Disclosure and Barring Service (DBS) clearance.

NPW, managing recruitment on behalf of Newham Schools

**Teaching Assistant**

Kaizen Primary School

Elkington Road, London, E13 8LH

0207 473 6890

admin@kaizen.newham.sch.uk

Head Teacher: Rebekah Iiyambo

Scale 3 Point 14 (Qualified) Scale 2 Point 11 (Unqualified)

£15,836.44 - £16,928

36 hours per week - Term Time (8am – 4pm)

We are looking for talented graduates, considering a career in teaching, to join our team as a teaching assistant to work in partnership with the teaching staff to support and extend children's learning across the school.

Are you organised, a great communicator, lively and able to motivate others?

Do you understand how children learn?

Do you enjoy working with children – seeing them develop and grow?

Can you work on your own initiative and be an inspiring part of a team?

Are you committed to learning yourself?

We're a very friendly group, dedicated to learning (ourselves as well as the children), supportive of each other and passionate about what we do.

Kaizen is a part of the Eko Trust, where every member of our community is empowered to learn, to be ambitious and to be resilient. We are committed to safeguarding and promoting the welfare of

children and young people. We expect all staff to share this commitment and to undergo appropriate checks, including DBS. Kaizen Primary School supports Equal Opportunities Employment.

Please contact the school directly to arrange an informal meeting and to receive an application pack.

Please apply online at <http://ats-npw.jobsgopublic.com/vacancies/view/33016-teaching-assistant?source=1099-npw-newsletter>

**Closing Date – 4th June 2017  
Shortlisting – 6th June 2017  
Skills Test & Interviews - 13th June 2017**

## Deputy Librarian

### Lister Community School

Lister Community School is a large, 11-16 comprehensive school. We are a mixed school that was judged 'Good' by Ofsted in 2013 and has just celebrated its 6th consecutive year of record breaking exam results.

We are determined to build on our most recent Ofsted judgement and continue our journey to becoming 'Outstanding' in the next two years. Our motto is "always aiming for excellence". An exceptional school: Our vision is a world class education for young people in Newham.

Lister is embarking on an exciting stage of developing its support services for the school and we are seeking dynamic, professional and high quality individuals to join us in our aim for excellence in all areas. The school is committed to safeguarding and promoting the welfare of children, and applicants must be willing to undergo child protection screening appropriate to the post including checks with past employers and the Disclosure and Barring Service (DBS).

We would ideally like to fill this post as soon as possible – subject to completion of recruitment checks. 36 hours per week, term time plus 2 weeks  
Salary: Scale 5 (£22,284 per annum, pro rata)

We are seeking to appoint a skilled, enthusiastic, dynamic and energetic individual, committed to ensuring that all students read for pleasure and achieve high academic standards. The successful applicant needs to be flexible, a good team worker, able to take responsibility and have a keen eye for detail. An interest in reading and education is essential, but previous experience in a school library is not a requirement. The successful applicant will be educated to degree level and will have a good all round education

This is an excellent opportunity to play a key role in the development of the school as we continue to successfully raise standards and move from Good to Outstanding.

If you think you have the potential to work as an outstanding Deputy Librarian then an application form can be downloaded directly from our school's website at: <http://www.lister.newham.sch.uk/>

vacancies/ or by contacting Jackie Young (HR Manager) on 020 8471 3311. Completed applications must be returned to the school at the above address, or by email to: [jobs@lister.newham.sch.uk](mailto:jobs@lister.newham.sch.uk)  
The school is committed to safeguarding and promoting the welfare of young people and expects all staff to share this commitment. This appointment will be conditional on successful pre-employment and enhanced DBS checks.

**Applications are required by 4.00pm on Monday, 8th May 2017.**

**Interviews: Friday, 12th May 2017 subject to applications.**

We will endeavour to acknowledge receipt of all application forms, however depending on the volume of applicants this is not always possible. If you do not receive acknowledgement, please do not assume that your Application Form has been received. We will only be contacting those candidates who have been selected to progress to the next stage of the process.