

# TOP OF WALL ATTACHMENT PROCEDURES

This document is designed to supplement and clarify the top of wall attachment requirements listed in the Superior Walls Builder Guideline Booklet (BGB).

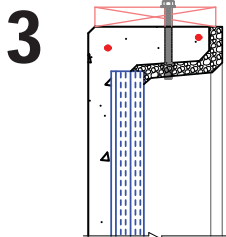
**CAUTION: All construction personnel working with Superior Walls products should read the Builder Guideline Booklet before proceeding. Failure to follow the guidelines therein can void the warranty. A current PDF copy of the BGB is available at [www.superiorwalls.com](http://www.superiorwalls.com).**



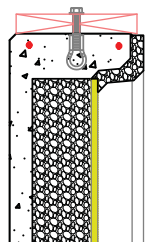
Construction adhesive is recommended between the Bond Beam and the Sill Plate (a 2x10 Sill Plate is recommended).



When holes are provided in the concrete Bond Beam, drill through the sill plate from below (Xi Wall System).



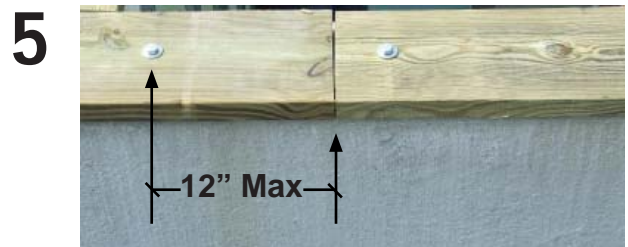
Bolt the Sill Plate using 1/2" x 5-1/2" (minimum dia.) bolts (Use Washers on top of Plate and under bottom of Bond Beam). (Xi Wall System)



or, use 1/2" x 2-1/2" NC Threaded Bolt with Washer or 1/2" x 3" NC Threaded Stud with Nut and Washer when inserts are provided in the Bond Beam. (Xi Plus Wall System)



Sill Plate splice must be at least 4 feet away from foundation panel joint.



Sill Plate must be bolted within 12 inches of the end of all plate sections.



Install blocking and bracing between joists according to the instructions of the Builder Guideline Booklet.

**7** For modular connections, be sure to consult the Builder Guideline Booklet for details on framing strap / blocking requirements.