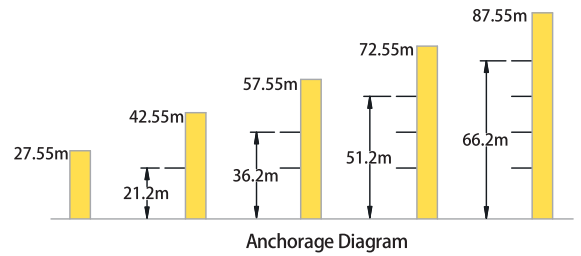


LC 120 Luffing Crane

8 t

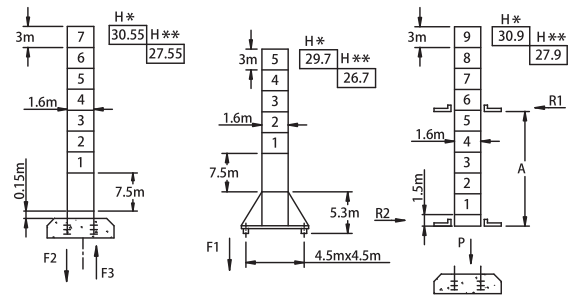
Load Capacity

Jib Length	Radius (m)	Radius (m)							
		3.5~18.6	20	25	30	32	35	40	45
45m	Hoisting Load (t)	8.0	7.3	5.5	4.2	4.0	3.3	2.6	2.2
	Free Standing Height (m)	4.0				3.3			
40m	Hoisting Load (t)	8.0	7.3	5.5	4.3	4.0	3.4	2.6	
	Free Standing Height (m)	4.0				3.4		2.6	
35m	Hoisting Load (t)	8.0	7.4	5.6	4.4	4.0	3.4		
	Free Standing Height (m)	4.0				3.4			
30m	Hoisting Load (t)	8.0	7.4	5.6	4.4				
	Free Standing Height (m)	4.0							

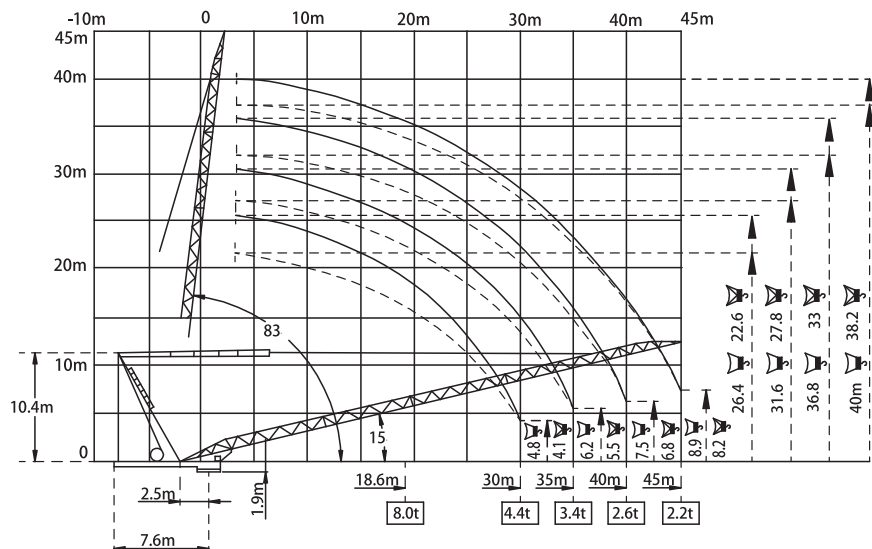
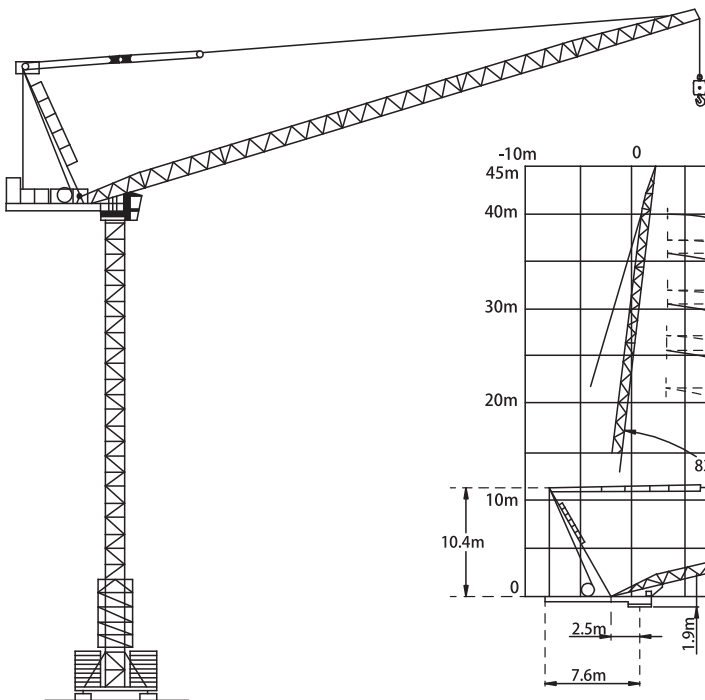


Specifications

Hoisting	No of Falls	In Service			Out of Service	
	Speed (m/min)	0 ~ 40	0 ~ 66	0 ~ 80	0 ~ 20	0 ~ 33
Hoisting Load (t)	4.0	2.4	2.0	8.0	4.8	4.0
Power (kw)	30	30	30	30	30	30
Slewing	Speed (rpm)	0 ~ 0.7				
	Power (kw)	2 x 4.5				
Travelling	Speed (rpm)	0 ~ 25				
	Power (kw)	2 x 5.2				
Luffing	Speed (m/min)	≤ 3.5				
	Power (kw)	30				
Main Supply	415V / 50Hz					
Electric Power	69kw (86.3 kVA)					



F2	◇ 100t	△ 119t	⊕ 38.5t
F3	◇ 78t	△ 97t	⊕ 38.5t
F1	◇ 60t	△ 68t	⊕ 40.5t
A	7m	11m	
R1	24t	16t	
R2	20.5t	13.5t	
P	50t	50t	
	⊕ 42t		



F Reaction ◇ In Service △ Out of Service ⊕ Dead weight without load and counter weights but with longest jib and free standing height.
 P Vertical Load H Free Standing Height Jib *30 - 35m **40 - 45m