



An ISO 9001:2008
Certified Company

tecnicrafts®

Precisely Crafted. To Inspire Trust.



Carbide Lined Guide Bushing & Collets

www.tecnicrafts.com



An ISO 9001:2008
Certified Company

tecnicrafts®

Carbide Lined Guide Bushing
Long Carbide for Special Swiss turning Applications



**CITIZEN-CINCOM, TSUGAMI, STAR,
TORNOS, TORNOS-DECO, TORNOS-DELTA,
GILDEMEISTER, HARDINGE, HANWHA, INDEX, NEXTURN,
MAIER, MANURHIN-KMX, MIYANO, NOMURA,
POLYGIM, TRAUB, BECHET, BECHLER,
PETERMAN, STROHM, GAUTHIER,**



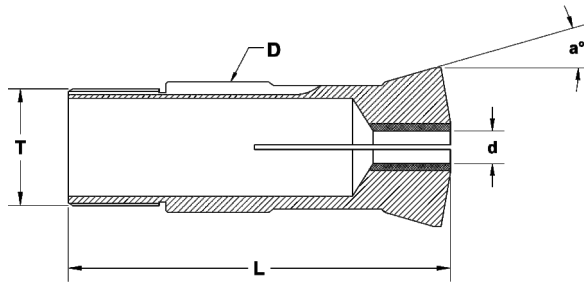
An ISO 9001:2008
Certified Company

tecnicrafts®

**Manufacturers of
Hi-Precision Collets, Carbide Lined Guide Bushes
for Swiss type Automatic lathes**



Carbide Lined Guide Bushing - Canons Metal Dur - HartMetal Führungsbuchse - Boccole



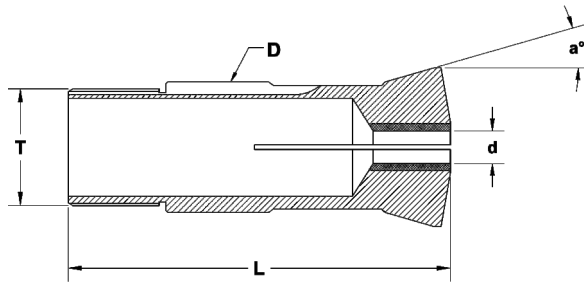
CARBIDE LINED GUIDE BUSH - DRAWN TYPE

All Dimension are in mm - Unless Otherwise Specified

Part Nr.	Guiding Dia	Total Length	Thread	Angle	Capacity		
					Round	Hexagon	Square
	ØD	L	T	a°	●	⬡	■
R7/02	7	30	M6x0.5	16°	3.5	-	-
R9/01	9	44	M8x0.5	16°	5	4	3
R9/03	9	38.5	M8x0.75	16°	5	4	3
R9/06	9	51	M8x0.8	30°	5	4	3
R9/09	9	44	M8x0.75	16°	5	4	3
R10/03	10	58	M10x0.75	12°	5.5	4	3
R11/02	11	53	M10x0.75	16°	7	5	4
R11/09	11	53	M10x1	16°	7	5	4
R11/10	11	57	M10x0.75	16°	7	5	4
R11/11	11	52.4	M10x0.75	16°	7	5	4
R11/12	11	53	M10x0.80	16°	7	5	4
R12/01	12	52	M12x1	30°	7	5	4
R12/02	12	50	M10x0.75	16°	7	5	4
R12/05	12	50	M10x0.75	16°	7	5	4
R12/07	12	50	M12x1	30°	7.5	6	5
R12/08	12	50	M10x0.5	30°	7	5	4
R12/09	12	50	M12x1	30°	7.5	6	5
R13/01	13	41.5	M12x0.75	15°	8	6	5
R14/02	14	64	M13x0.75	16°	8.5	7	6

* table to be continued

Carbide Lined Guide Bushing - Canons Metal Dur - HartMetal Führungsbuchse - Boccole



CARBIDE LINED GUIDE BUSH - DRAWN TYPE

All Dimension are in mm - Unless Otherwise Specified

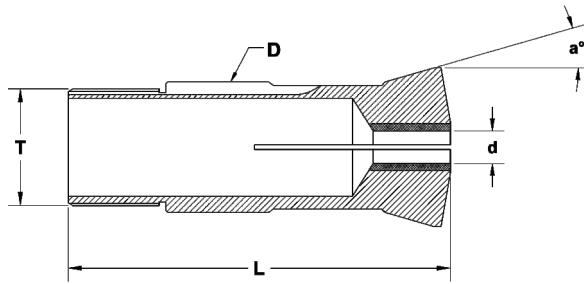
Part Nr.	Guiding Dia	Total Length	Thread	Angle	Capacity		
					Round	Hexagon	Square
	ØD	L	T	a°	●	⬡	■
R14/03	14	62	M14x1	15°30'	8.5	7	6
R15/02	15	54	M14x1	16°	10	8	7
R15/03	15	54	M14x0.75	15°	8.5	7	6
R16/01	16	50	M14x1	16°	10	8	7
R16/03	16	60	M14x1	30°	10	8	7
R16/06	16	55	M16x1	30°	10	8	7
R16/07	16	63	M14x1	15°30'	10	8	7
R16/10	16	58	M14x1	16°	10	8	7
R16/12	16	59	M14x1	16°	10	8	7
R16/15	16	59	M15x1	16°	11	9	8
R16/16	16	58.5	M14x1	20°	10	8	7
R18/01	18	59	M16x1	30°	12	10	8
R18/02	18	60	M18x1	30°	13	10	9
R18/03	18	60	M18x1	30°	13	10	9
R20/01	20	55	M20x1	30°	14	11	9
R20/06	20	55	M20x1	30°	13	11	9
R20/07	20	58	M18x1	15°	13	11	9
R21/03	21	57.5	M18x1	12°	14	11	9
R22/01	22	68	M19x1	16°	14	11	9
R22/03	22	70	M20x1	15°	15.5	13	11

Z

* table to be continued

GUIDE BUSH - DRAWN TYPE

Carbide Lined Guide Bushing - Canons Metal Dur - HartMetal Führungsbuchse - Boccole



CARBIDE LINED GUIDE BUSH - DRAWN TYPE

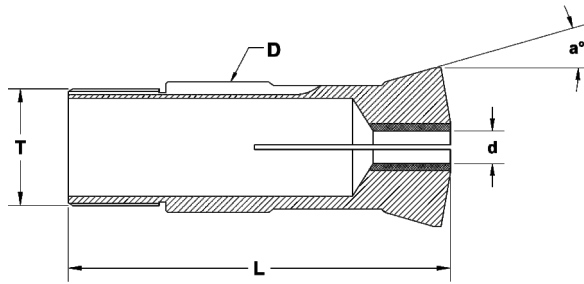
All Dimension are in mm - Unless Otherwise Specified

Part Nr.	Guiding Dia	Total Length	Thread	Angle	Capacity		
					Round	Hexagon	Square
	ØD	L	T	a°	●	⬡	■
R22/08	22	68	M22x1	16°	16	13	11
R23/01	23	72	M22x1	16°	16.5	14	11
R24/03	24	61	M24x1	30°	16	13	11
R26/02	26	77	M25x1	16°	20	17	14
R27/03	27	57.5	M24x1	12°	18	15	12
R28/02	28	81	M25x1	30°	20.5	17	14
R28/04	28	82	M25x1	16°	20.5	17	14
R28/05	28	82	M27x1	16°	22	18	15
R30/01	30	70	M28x1	16°	20.5	17	14
R30/02	30	85	M28x1	16°	20.5	17	14
R30/04	30	59	M30x1	15°	22	19	15
R30/05	30	59	M30x1	16°	22	19	15
R30/06	30	68	M30x1	16°	22	19	15
R30/07	30	70	M30x1	16°	22	19	15
R32/02	32	71	M32x1	30°	23	19	16
R32/03	32	74	M32x1	30°	24	21	17
R33/01	33	70	M30x1	16°	26	22	18
R34/02	34	87.5	M34x1	10°	27.5	23	19
R36/02	36	89.5	M36x1	13°	25	21	18
R40/03	40	72	M36x1	30°	29	25	20

* table to be continued

GUIDE BUSH - DRAWN TYPE

Carbide Lined Guide Bushing - Canons Metal Dur - HartMetal Führungsbuchse - Boccole



CARBIDE LINED GUIDE BUSH - DRAWN TYPE

All Dimension are in mm - Unless Otherwise Specified

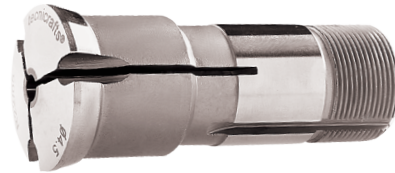
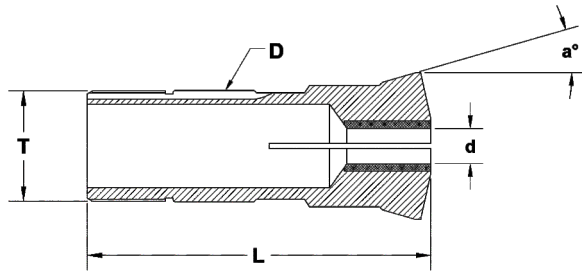
Part Nr.	Guiding Dia	Total Length	Thread	Angle	Capacity		
					Round	Hexagon	Square
	ØD	L	T	a°	●	⬡	■
R40/05	40	72	M40x1	30°	30	25	21
R41/01	41	54	M38x1	10°	32	27	22
R41/02	41	82	M38x1	10°	32	27	22
R42/01	42	82	M40x1	16°	33	28	23
R42/02	42	82	M40x1	20°30'	33	28	23
R42/04	42	82	M40x1	20°	33	28	23
R44/01	44	87	M40x1	20°	33	28	23
R45/01	45	82	M42x1	16°	36	30	25
R46/01	46	92	M45x1	16°	38	32	26
R46/02	46	82	M45x1	16°	38	32	26
R48/02	48	81	M48x1.25	30°	38	33	27
R48/04	48	82	M46x1	16°	38	33	27
R48/06	48	81	M46x1	10°	38	33	27
R50/02	50	82	M49x1	19°	42	36	29



An ISO 9001:2008
Certified Company

tecnicrafts®

Carbide Lined Guide Bushing - Canons Metal Dur - HartMetal Führungsbuchse - Boccole

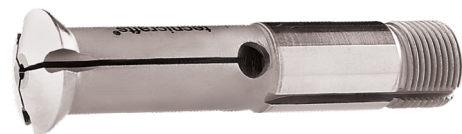
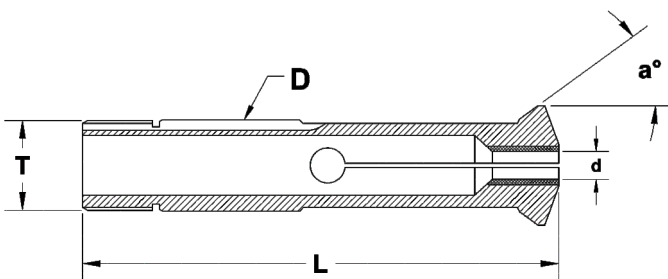


CARBIDE LINED GUIDE BUSH - WITH REINFORCED SHANK

All Dimension are in mm - Unless Otherwise Specified

Part Nr.	Guiding Dia	Total Length	Thread	Angle	Capacity		
					Round	Hexagon	Square
	ØD	L	T	a°	●	⬡	■
R22/05	22	68	M22x1	16°	16	13	11
R34/06	34	150	M32x1.50	20°	27	22	19

Magic Type



CARBIDE LINED GUIDE BUSH - MAGIC TYPE

All Dimension are in mm - Otherwise Specified

Part Nr.	Guiding Dia	Total Length	Thread	Angle	Capacity		
					Round	Hexagon	Square
	ØD	L	T	a°	●	⬡	■
R10/02	10	58	M10x1	36°	5.5	4	3
R13/02	13	68	M13x1	36°	8	6	5
R18/05	18	68	M18x1	36°	13	10	9

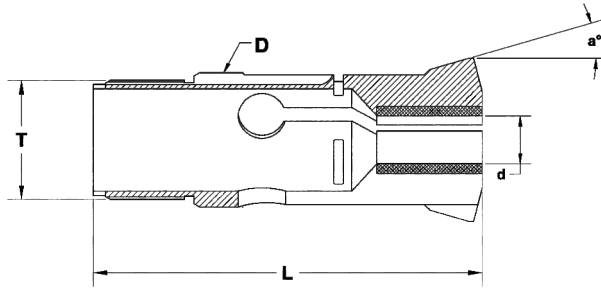
REINFORCED SHANK & Magic Type



An ISO 9001:2008
Certified Company

tecnicrafts®

Carbide Lined Guide Bushing - Canons Metal Dur - HartMetal Führungsbuchse - Boccole



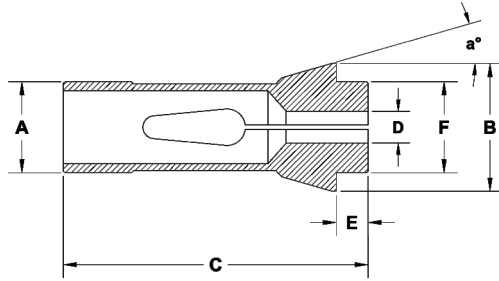
CARBIDE LINED GUIDE BUSH - TRAUB

All Dimension are in mm - Unless Otherwise Specified

Part Nr.	Guiding Dia	Total Length	Thread	Angle	Capacity		
					Round	Hexagon	Square
	ØD	L	T	a°	●	⬡	■
R21/07	21	65.5	M18x1	12°	13.5	11	9
R27/01	27	67.5	M24x1	12°	18	15	13
R28/06	28	81.2	M25x1	16°	20.5	17	14
R42/05	42	81.2	M40x1	16°	33	28	23

GUIDE BUSH - TRAUB

Collets - Pinces - Spannzangen - Pinze



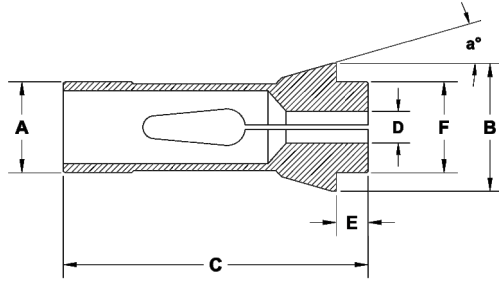
F - TYPE WITH STRAIGHT SHOULDER

All Dimension are in mm - Unless Otherwise Specified

Part Nr.	Guiding Dia	Major Dia	Total Length	Nose Length	Nose Dia	Angle	Capacity		
							Round	Hexagon	Square
	ØA	ØB	C	E	ØF	a°	●	⬡	■
SF 7/66	7	10.7	26	2.9	7	15°	4.5	3	-
SF 8/577	8	12	42	4.5	8	16°	5.5	4	3
SF 10/86	10	15.5	47.5	5.5	10	20°	7	5	4
SF 10/1178	10	16	46	4	10	20°	7	5	4
SF 12/78	12	18.1	44.5	4.3	12	15°	8	6	5
SF 12/578	12	18	64	6	12	16°	8	6	5
SF 13/357	13	19	64	6	13	16°	10	8	7
SF 14/98	14	18	46	4	14	13°	10	8	7
SF 15/358	15	22	47	5	15	20°	10.5	9	7
SF 15/580	15	21	64	6	15	16°	11	9	8
SF 16/104	16	22	55	5	16	15°	12	10	8
SF 16/1076	16	21	64	6	16	16°	12	10	8
SF 20/87	20	28	67	7	21	16°	16	13	11
SF 20/102	20	27.5	60	5	20	15°	16	13	11
SF 20/201	20	26	54	5	19	15°	16	13	11
SF 20/9026	20	26	67	3	19	16°	16	13	11
SF 22/727	22	32	66	7	25	16°	17	15	12
SF 23.8/9020	23.8	28	62	7	22	15°	18	15	12
SF25/64	25	35	77	10	27	16°	20	17	14
SF 25/91	25	34	65	6	25	15°	20	17	14

* table to be continued

Collets - Pinces - Spannzangen - Pinze



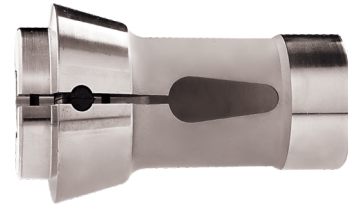
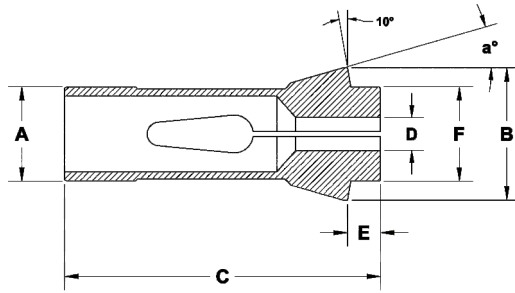
F - TYPE WITH STRAIGHT SHOULDER

All Dimension are in mm - Unless Otherwise Specified

Part Nr.	Guiding Dia	Major Dia	Total Length	Nose Length	Nose Dia	Angle	Capacity		
							Round	Hexagon	Square
	ØA	ØB	C	E	ØF	a°	●	⬡	■
SF 26/90	26	32	67	7	27.5	13°	20.5	17	14
SF 26/9021	26	36	67	7	28	15°	20.5	17	14
SF 27/22	27	38	72.7	8	30	15°	23	19	16
SF 28/93	28	38	70	7	28	15°	23	19	16
SF 28/9004	28	35	77	10	27.5	16°	22.5	19	16
SF 30/63	30	42	80	10	34	16°	25	21	17
SF 30/101	30	38	65	6	32	15°	26	22	18
SF 30/9044	30	42	80	12	32	16°	25	22	18
SF 30/9066	30	42	78	10	32	16°	25	22	18
SF 33/9043	33	40	80	12	32	16°	28	24	20
SF 37/740	37	47	92	10	40	16°	32	27	22
SF 40/9074	40	50	92	10	43	16°	35	30	24
SF 44/9082	44	52	92	10	44	16°30'	38	32	27

F - TYPE WITH STRAIGHT SHOULDER

Collets - Pinces - Spannzangen - Pinze



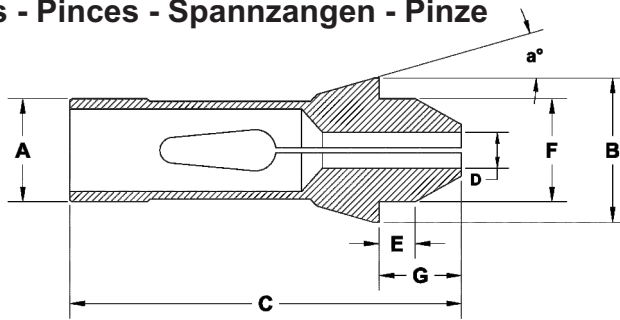
F - TYPE WITH TAPERED SHOULDER

All Dimension are in mm - Unless Otherwise Specified

Part Nr.	Guiding Dia	Major Dia	Total Length	Nose Length	Nose Dia	Angle	Capacity		
							Round	Hexagon	Square
	ØA	ØB	C	E	ØF	a°	●	⬡	■
SF 17.46/79	17.46	22	51	5	16	15°	13.5	11	9
SF 22/71	22	30	55	6	21	15°	16.5	14	11
SF 32/221	32	45	75	8	34	15°	26	22	18
SF 35/94	35	48	80	8	38	15°	30	25	21
SF 38/72	38.08	49	107.5	9	38	15°	32	27	22
SF 42/99	42	55	94	9	42	15°	36	30	25
SF 43/37	43	53	92	10	46	16°	38	33	27
SF 43/9078	43	53	92	10	42	15°	35	30	25
SF 48/38	48	54	100	10	44	15°	39	34	28
SF 48/81	48	60	94	9	50	15°	42	36	29
SF 48/9079	48	54	100	10	44	15°	41	35	29
SF 58/9046	58	70	94	9	60	15°	51	44	36

F - TYPE WITH TAPERED SHOULDER

Collets - Pinces - Spannzangen - Pinze



F - TYPE LONG NOSE COLLETS

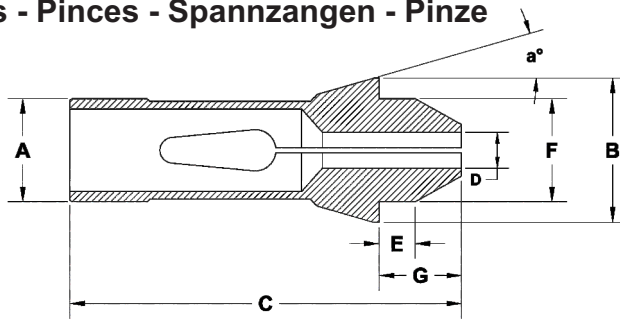
All Dimension are in mm - Unless Otherwise Specified

Part Nr.	Guiding Dia	Major Dia	Total Length	Nose Length	Nose Length	Nose Dia	Angle	Capacity		
								Round	Hexagon	Square
	ØA	ØB	C	G	E	ØF	a°	●	⬡	■
LNSF 8/577-8	8	12	45.50	8	4.50	8	16°	5.5	4	3
LNSF 8/577-10	8	12	47.50	10	4.50	8	16°	5.5	4	3
LNSF 8/577-12	8	12	49.50	12	4.50	8	16°	5.5	4	3
LNSF 10/86-8	10	15.50	50	8	5.50	10	20°	7	5	4
LNSF 10/86-10	10	15.50	52	10	5.50	10	20°	7	5	4
LNSF 10/86-12	10	15.50	54	12	5.50	10	20°	7	5	4
LNSF 10/86-16	10	15.50	58	16	5.50	10	20°	7	5	4
LNSF 12/78-10	12	18.10	50.20	10	4.30	12	15°	8	6	5
LNSF 13/357-10	13	19	68	10	6	13	16°	10	8	7
LNSF 13/357-12	13	19	70	12	6	13	16°	10	8	7
LNSF 15/580-13	15	21	71	13	6	15	16°	11	9	8
LNSF 15/580-15	15	21	73	15	6	15	16°	11	9	8
LNSF 15/580-20	15	21	78	20	6	15	16°	11	9	8
LNSF 16/104-20	16	22	70	20	6	16	15°	12	10	8
LNSF 16/1076-13	16	21	71	13	6	16	16°	12	10	8
LNSF 16/1076-15	16	21	73	15	6	16	16°	12	10	8
LNSF 16/1076-20	16	21	78	20	6	16	16°	12	10	8
LNSF 20/87-15	20	28	75	15	7	21	16°	16	13	11
LNSF 20/87-20	20	28	80	20	7	21	16°	16	13	11
LNSF 20/201-13	20	26	62	13	5	19	15°	16	13	11

* table to be continued

F - TYPE LONG NOSE COLLETS

Collets - Pinces - Spannzangen - Pinze



F - TYPE LONG NOSE COLLETS

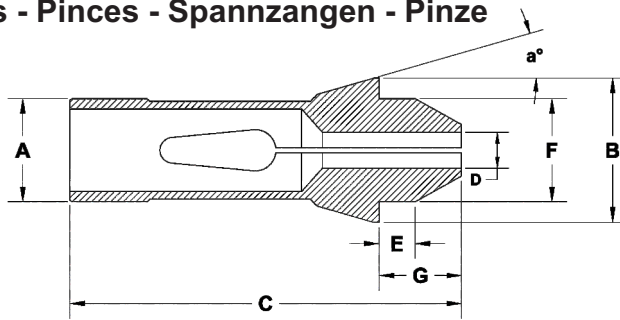
All Dimension are in mm - Unless Otherwise Specified

Part Nr.	Guiding Dia	Major Dia	Total Length	Nose Length	Nose Length	Nose Dia	Angle	Capacity		
								Round	Hexagon	Square
	ØA	ØB	C	G	E	ØF	a°	●	⬡	■
LNSF 20/201-15	20	26	64	15	5	19	15°	16	13	11
LNSF 20/201-20	20	26	69	20	5	19	15°	16	13	11
LNSF 20/9026-15	20	26	79	15	3	19	16°	16	13	11
LNSF 20/9026-20	20	26	84	20	3	19	16°	16	13	11
LNSF 22/71-15	22	30	64	15	6	21	15°	16.5	14	11
LNSF 22/71-20	22	30	69	20	6	21	15°	16.5	14	11
LNSF 22/727-15	22	32	74	15	7	25	16°	17	15	12
LNSF 22/727-20	22	32	79	20	7	25	16°	17	15	12
LNSF 23.8/9020-15	23.80	28	70	15	7	22	15°	18	15	12
LNSF 23.8/9020-20	23.80	28	75	20	7	22	15°	18	15	12
LNSF 25/64-15	25	35	82	15	10	27	16°	20	17	14
LNSF 25/64-18	25	35	85	18	10	27	16°	20	17	14
LNSF 25/64-20	25	35	87	20	10	27	16°	20	17	14
LNSF 25/64-25	25	35	92	25	10	27	16°	20	17	14
LNSF 26/9021-15	26	36	75	15	7	28	15°	20.5	17	14
LNSF 26/9021-20	26	36	80	20	7	28	15°	20.5	17	14
LNSF 26/9021-25	26	36	85	25	7	28	15°	20.5	17	14
LNSF 27/22-15	27	38	79.70	15	8	30	15°	23	19	16
LNSF 27/22-20	27	38	84.70	20	8	30	15°	23	19	16
LNSF 27/22-25	27	38	89.70	25	8	30	15°	23	19	16

* table to be continued

F - TYPE LONG NOSE COLLETS

Collets - Pinces - Spannzangen - Pinze



F - TYPE LONG NOSE COLLETS

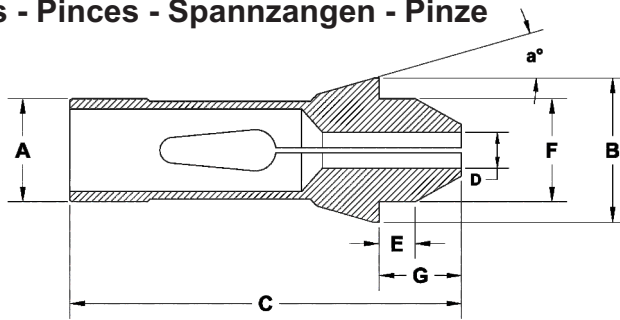
All Dimension are in mm - Unless Otherwise Specified

Part Nr.	Guiding Dia	Major Dia	Total Length	Nose Length	Nose Length	Nose Dia	Angle	Capacity		
								Round	Hexagon	Square
	ØA	ØB	C	G	E	ØF	a°	●	⬡	■
LNSF 28/93-20	28	38	83	20	7	28	15°	23	19	16
LNSF 28/93-25	28	38	88	25	7	28	15°	23	19	16
LNSF 28/9004-20	28	35	87	20	10	27.50	16°	22.5	19	16
LNSF 28/9004-25	28	35	92	25	10	27.50	16°	22.5	19	16
LNSF 30/63-20	30	42	90	20	10	34	16°	25	21	17
LNSF 30/63-25	30	42	95	25	10	34	16°	25	21	17
LNSF 30/101-20	30	38	79	20	6	32	15°	26	22	18
LNSF 30/101-25	30	38	84	25	6	32	15°	26	22	18
LNSF 30/9044-20	30	42	88	20	12	32	16°	25	22	18
LNSF 30/9044-25	30	42	93	25	12	32	16°	25	22	18
LNSF 32/221-15	32	45	82	15	8	34	15°	26	22	18
LNSF 32/221-20	32	45	87	20	8	34	15°	26	22	18
LNSF 32/221-25	32	45	92	25	8	34	15°	26	22	18
LNSF 33/9043-20	33	40	88	20	12	32	16°	28	24	20
LNSF 33/9043-25	33	40	93	25	12	32	16°	28	24	20
LNSF 35/94-20	35	48	92	20	8	38	15°	30	25	21
LNSF 35/94-25	35	48	97	25	8	38	15°	30	25	21
LNSF 35/94-27	35	48	99	27	8	38	15°	30	25	21
LNSF 37/740-20	37	47	102	20	10	40	16°	32	27	22
LNSF 37/740-25	37	47	107	25	10	40	16°	32	27	22

* table to be continued

F - TYPE LONG NOSE COLLETS

Collets - Pinces - Spannzangen - Pinze



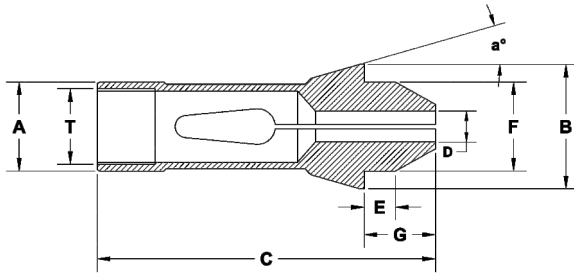
F - TYPE LONG NOSE COLLETS

All Dimension are in mm - Unless Otherwise Specified

Part Nr.	Guiding Dia	Major Dia	Total Length	Nose Length	Nose Length	Nose Dia	Angle	Capacity		
								Round	Hexagon	Square
	ØA	ØB	C	G	E	ØF	a°	●	⬡	■
LNSF 37/740-30	37	47	112	30	10	40	16°	32	27	22
LNSF 38/72-20	38.08	49	118.50	20	9	38	15°	32	27	22
LNSF 38/72-25	38.08	49	123.50	25	9	38	15°	32	27	22
LNSF 40/9074-20	40	50	102	20	10	43	16°	35	30	24
LNSF 40/9074-25	40	50	107	25	10	43	16°	35	30	24
LNSF 42/99-20	42	55	105	20	9	42	15°	36	30	25
LNSF 42/99-25	42	55	110	25	9	42	15°	36	30	25
LNSF 43/37-20	43	53	102	20	10	46	16°	38	33	27
LNSF 43/37-25	43	53	107	25	10	46	16°	38	33	27
LNSF 48/38-20	48	54	110	20	10	44	15°	39	34	28
LNSF 48/38-25	48	54	115	25	10	44	15°	39	34	28
LNSF 48//81-20	48	60	105	20	9	50	15°	42	36	29
LNSF 48//81-25	48	60	110	25	9	50	15°	42	36	29
LNSF 48//81-30	48	60	115	30	9	50	15°	42	36	29
LNSF 48/9079-20	48	54	110	20	10	44	15°	41	35	29
LNSF 48/9079-25	48	54	115	25	10	44	15°	41	35	29

F - TYPE LONG NOSE COLLETS

Collets - Pinces - Spannzangen - Pinze

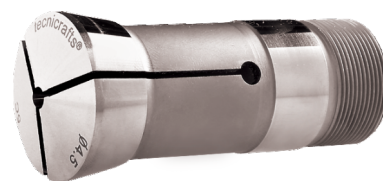
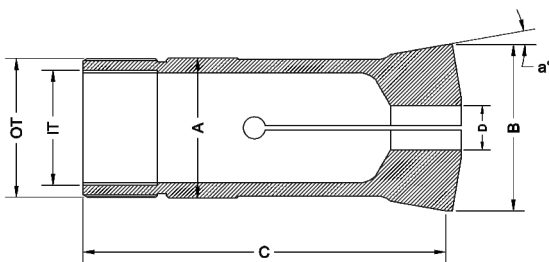


COLLET WITH INTERNAL THREAD

All Dimension are in mm - Unless Otherwise Specified

Part Nr.	Guiding Dia	Major Dia	Total Lengt	Nose Lengt	Nose Length	Nose Dia	Angle	Thread	Capacity		
									Round	Hexagon	Square
	ØA	ØB	C	G	E	ØF	a°	T	●	⬡	■
SF13/2014	13	19	70	12	6	13	16°	M11x0.75	9	8	6
SF16/830	16	21	66	8	6	16	16°	M14x0.75	12	10	8
SF16/2015	16	21	71	13	6	16	16°	M14x0.75	12	10	8
SF20/2016	20	26	62	13	5	19	15°	M18x1	16	13	11
SF25/2018	25	35	85	18	9	27	16°	M22x1	20	17	14

5C / 16c Collets



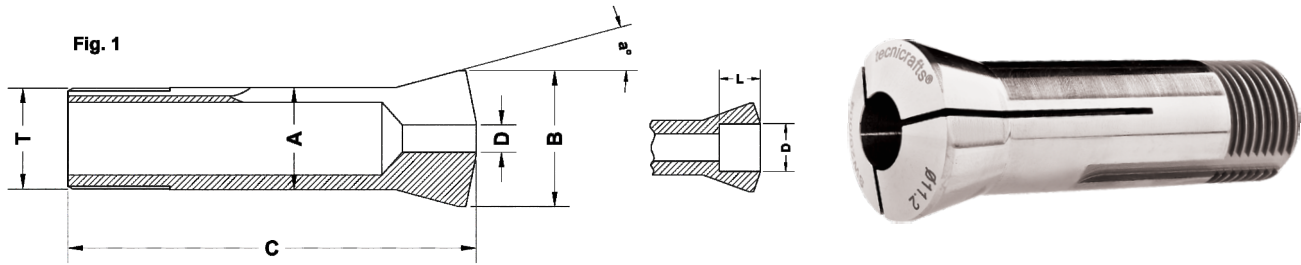
SPECIAL COLLETS - 5C / 16C COLLETS

All Dimension are in mm - Unless Otherwise Specified

Part Nr.	Guiding Dia	Major Dia	Total Length	OD Thread	ID Thread	Angle	Capacity		
							Round	Hexagon	Square
	ØA	ØB	C	OT	IT	a°	●	⬡	■
5c Collet	1.25"(31.75)	1.484"(37.70)	3.268"(83.0)	1.238"x20TPI	1.041"x24TPI	10°	25	21	17
16c Collet	1.889"(48.0)	2.260"(57.40)	4.291"(109.0)	1.870"x1.75	1.687"x20TPI	10°	41	35	29

COLLET WITH INTERNAL THREAD

Collets - Pinces - Spannzangen - Pinze



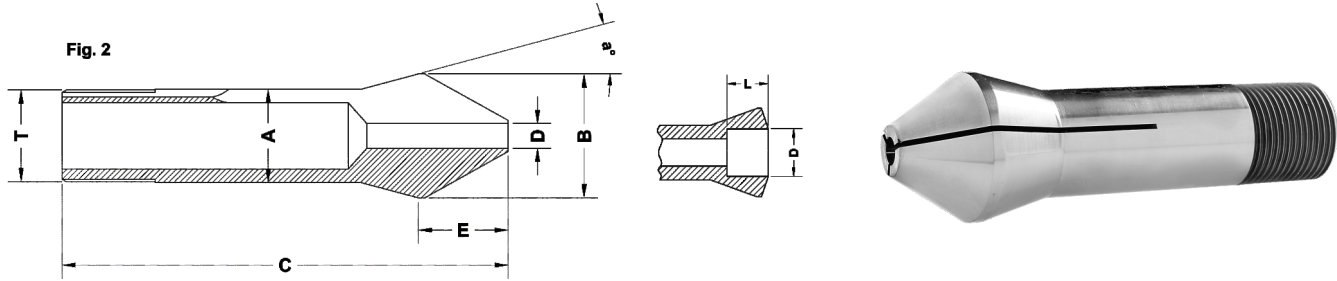
W - TYPE COLLETS

All Dimension are in mm - Unless Otherwise Specified

Part Nr.	Guiding Dia	Major Dia	Length	Thread	Nose Length	Angle	Figure	Length	Capacity
									D Min - Max
	ØA	ØB	C	T	E	a°		L	
SW10/001	10	14	43.6	Ø9.83x0.833 (<) 45°/5°	-	15°	1	-	1.00...6.70
								15	6.71...8.00
								6	8.01...8.50
								5	8.51...9.00
								4	9.01...9.50
								3	9.51...10.00
SW12/002	12	16	46	Ø11.75x1.25 (<) 45°/5°	-	15°	1	-	1.00...8.00
								17	8.01...10.00
								6	10.01...10.50
								5	10.51...11.00
								4	11.01...11.50
								3	11.51...12.00
SW12/93108	12	16	52	Ø11.75x1.25 (<) 45°/5°	8.8	15°	2	-	1.00...8.00
								24	8.01...10.00
SW15/003	15	20.2	58.3	Ø14.75x1.25 (<) 45°/5°	-	15°	1	-	1.00...10.70
								22	10.71...12.70
								9.5	12.71...13.00
								8.5	13.01...13.50
								7.5	13.51...14.00
								6.5	14.01...14.50
								5.5	14.51...15.00
								4.5	15.01...15.50
3.5	15.51...16.00								
SW15/93285	15	20.2	67	Ø14.75x1.25 (<) 45°/5°	12	15°	2	-	1.00...10.20
								22	10.21...12.70
SW20/004	20	26.3	73	Ø19.7x1.666 (<) 45°/5°	-	15°	1	-	1.00...14.50
								28	14.51...16.00
								13.5	16.01...16.50
								13	16.51...17.00
								12.2	17.01...17.50
								11.5	17.51...18.00
								10.7	18.01...18.50
								10	18.51...19.00
								8.7	19.01...19.50

W - TYPE COLLETS

Collets - Pinces - Spannzangen - Pinze



W - TYPE COLLETS

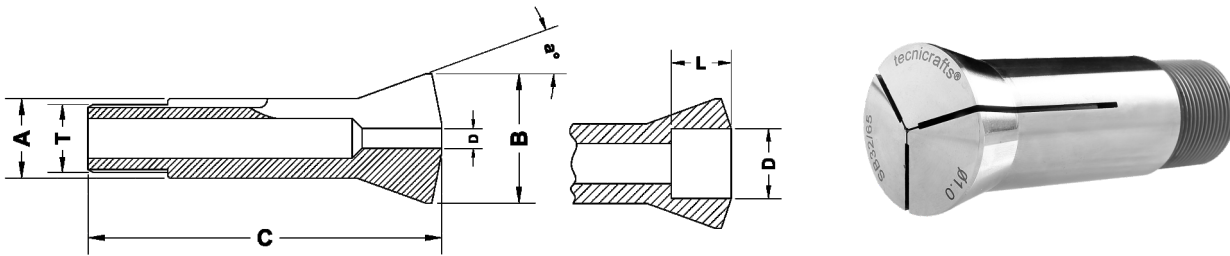
All Dimension are in mm - Unless Otherwise Specified

Part Nr.	Guiding Dia	Major Dia	Length	Thread	Nose Length	Angle	Figure	Length	Capacity
									D Min - Max
	ØA	ØB	C	T	E	a°		L	
SW20/004	20	26.3	73	Ø19.7x1.666 (<) 45°/5°	-	15°	1	7.5	19.51...20.00
								6.5	20.01...20.50
								5.5	20.51...21.00
								4.7	21.01...21.50
								4	21.51...22.00
								3	22.01...22.50
SW20/92744	20	26.3	84.5	Ø19.7x1.666 (<) 45°/5°	15.5	15°	2	-	1.00...13.00
								41	13.01...16.00
SW25/005	25	33.7	97.6	Ø24.7x15f" (<) 45°/5°	-	15°	1	-	1.00...19.05
								35	19.06...21.00
								16.5	21.01...21.50
								16	21.51...22.00
								15.7	22.01...22.50
								15.5	22.51...23.00
								15	23.01...23.50
								14.5	23.51...24.00
								13.5	24.01...24.50
								12.5	24.51...25.00
								11.5	25.01...25.50
								10.5	25.51...26.00
								9.5	26.01...26.50
								8.5	26.51...27.00
7.5	27.01...27.50								
6.5	27.51...28.00								
5.5	28.01...28.50								
4.5	28.51...29.00								
SW25/92872	25	33.7	112.2	Ø24.7x15f" (<) 45°/5°	19.7	15°	2	-	1.00...19.05
								50	19.06...21.00
SW31.75/842	31.75	37.4	87	Ø31.4x20f" (<) 60°	-	10°3'	1	-	1.00...25.19
								40	25.20...27.99
								10	28.00...28.99
								7	29.00...29.99
								4	30.00...31.00

* table to be continued

W - TYPE COLLETS

Collets - Pinces - Spannzangen - Pinze



B - TYPE COLLETS

All Dimension are in mm - Unless Otherwise Specified

Part Nr.	Guiding Dia	Major Dia	Length	Thread	Angle	Length	Capacity
							D Min - Max
	ØA	ØB	C	T	a°	L	ØD
SB6/128	6	10.5	31.3	Ø5x36f" <) 55°	20°	-	1.00...3.00
						12	3.01...4.50
						4.5	4.51...5.00
						4	5.01...5.50
						3.5	5.51...6.00
SB8/137	8	13	35.5	Ø6.82x0.625 <) 55°	20°	-	1.00...4.00
						12.5	4.01...6.50
						6	6.51...7.00
						5	7.01...7.50
						4	7.51...8.00
						3.2	8.01...8.50
						2.5	8.51...9.00
						1.7	9.01...9.50
1	9.51...10.00						
SB15/139	15	21	55	M13 x 1	20°	-	1.00...9.50
						20	9.51...12.50
						8.5	12.51...13.00
						7.7	13.01...13.50
						7	13.51...14.00
						6.5	14.01...14.50
6	14.51...15.00						
SB32/55	32	40	102	M30 x 1.5	15°	-	1.00...24.00
						44	24.01...28.00
						12	28.01...30.00
						8	30.01...32.00
SB32/65	32	40	106	Ø29.7x15f" <) 45°/5°	15°	-	1.00...24.00
						44	24.01...28.00
						12	28.01...30.00
						8	30.01...32.00
SB45/199	45	53	115	M42 x 1.5	15°	-	1.00...36.00
						53	36.01...40.99
						14	41.00...41.99
						12	42.00...42.99
						10	43.00...43.99
8	44.00...45.00						

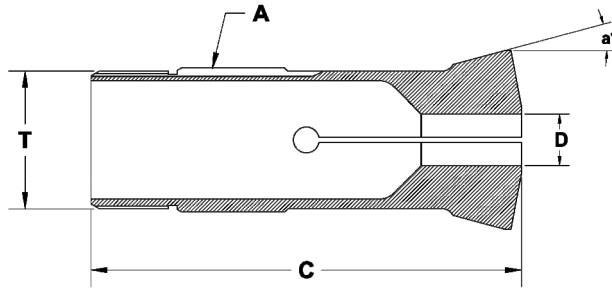
B - TYPE COLLETS



An ISO 9001:2008
Certified Company

tecnicrafts®

Collets - Pinces - Spannzangen - Pinze



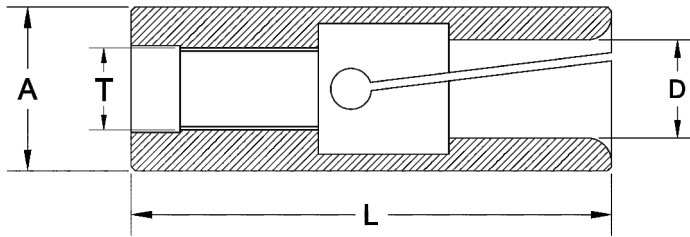
COLLET WITH EXTERNAL THREAD

All Dimension are in mm - Unless Otherwise Specified

Part Nr.	Guiding Dia	Total Length	Thread	Angle	Capacity		
					Round	Hexagon	Square
	ØA	L	T	a°	●	⬡	■
SF19/9018	19.05	77	M18.3 x 1.2	15°	13.0	11	9
SF33/9017	33	100	M32 x 1.5	15°	27.0	23	19
359E	23	93.8	Tr 23 x 1.5	20°	18.0	15	12
363E	25	89	M23 x 1	16°	18.0	15	12
366E	28	106.5	Tr 27 x 20f	18°30'	21.0	17	14
367E	28	104.4	Tr 28 x 1.5	20°	22.0	19	15
386E	32	115	Tr 32 x 1.5	20°	27.0	23	19
390E	47	115	Tr 47 x 1.5	20°	38.0	32	26

COLLET WITH EXTERNAL THREAD

BARFEEDER COLLETS



BARFEEDER COLLETS WITH INTERNAL THREAD

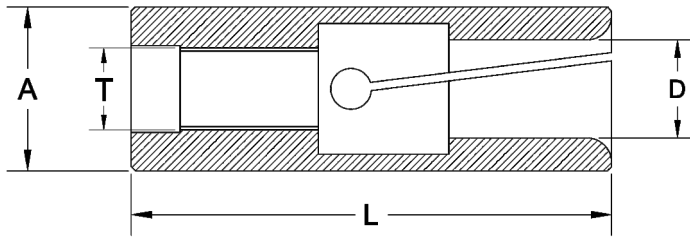
All Dimension are in mm - Unless Otherwise Specified

Part Nr.	Guiding Dia	Length	Thread	Capacity	
				Range	
	ØA	L	T	Ø Min	Ø Max
BF05/01	5.15	37	M4x0.7	1	3.5
BF8.5/01	8.5	30	M5x0.8	1	7
BF09/01	9	40	M6x0.75	1	7
BF10/03	10	46	M6x1 LH	1	8
BF10/04	10	42	M6x0.75	1	8
BF10/06	10	50	M5x0.8 LH	1	8
BF10/08	10	50	M5x0.8	1	8
BF12/04	12	40	M6x1 LH	1	10
BF12/06	12	42	M7x0.75	1	10
BF12/07	12	45	M5x0.8 LH	1	10
BF13/01	13	60	M8x1 LH	1	11
BF14/01	14	42	M8x1	3	12
BF15/02	15	42	M8x1	3	13
BF15/03	15	60	M9x1 LH	3	13
BF15/04	15	60	M10x1 LH	3	13
BF15/07	15	40	M5x0.5	3	13
BF15/11	15	60	M10x1	3	13
BF15/12	15	60	M8x1	3	13
BF16/01	16	73	M10x1 LH	3	14
BF16/04	16	58	M9x1 LH	3	14

* table to be continued

BARFEEDER COLLETS
WITH INTERNAL THREAD

BARFEEDER COLLETS



BARFEEDER COLLETS WITH INTERNAL THREAD

All Dimension are in mm - Unless Otherwise Specified

Part Nr.	Guiding Dia	Length	Thread	Capacity	
				Range	
	ØA	L	T	Ø Min	Ø Max
BF16/06	16	42	M8x1	12	14
BF18/03	18	42	M9x1 LH	6	16
BF18/04	18	60	M9x1 LH	13	16
BF18/05	18	59	M10x1 LH	13	16
BF18/06	18	59	M10x1	13	16
BF19/01	19	59	M10x1	13	17
BF19/06	19	60	M9x1 LH	13	17
BF19/08	19	40	M8x1	12	17
BF20/03	20	59	M10x1	13	18
BF20/04	20	60	M10x1 LH	13	18
BF20/08	20	59	M9x1 LH	13	18
BF20/09	20	42	M10x1	8	18
BF22/01	22	59	M10x1	18	20
BF22/04	22	59	M9x1 LH	18	20
BF23/04	23	59	M10X1	18	21
BF23/05	23	60	M9x1 LH	18	21
BF24/01	24	60	M9x1 LH	18	22
BF25/06	25	59	M10x1	18	23
BF25/07	25	59	M10x1 LH	18	23
BF25/08	25	60	M9x1 LH	18	23

* table to be continued

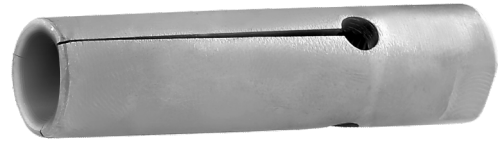
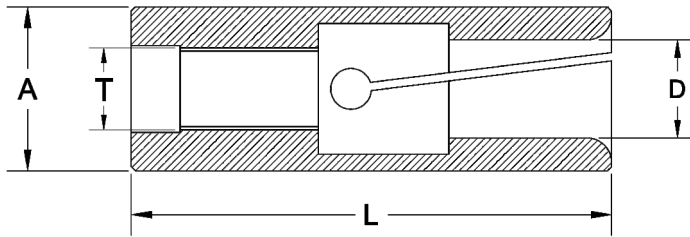
BARFEEDER COLLETS
WITH INTERNAL THREAD



An ISO 9001:2008
Certified Company

tecnicrafts®

BARFEEDER COLLETS



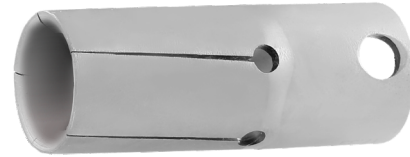
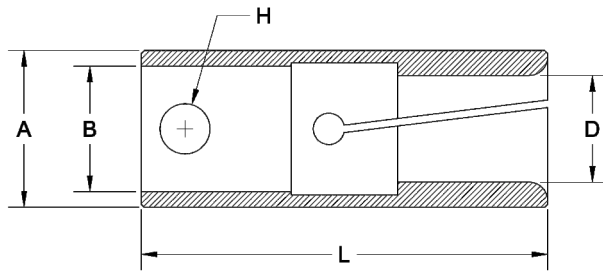
BARFEEDER COLLETS WITH INTERNAL THREAD

All Dimension are in mm - Unless Otherwise Specified

Part Nr.	Guiding Dia	Length	Thread	Capacity	
				Range	
	ØA	L	T	Ø Min	Ø Max
BF25/09	25	60	M17x1	13	23
BF27/01	27	65	M10x1 LH	15	25
BF27/02	27	65	M10x1	15	25
BF27/03	27	59	M9x1 LH	15	25
BF29/01	29	65	M18x1.5 LH	17	27
BF30/01	30	65	M10x1	25	28
BF30/03	30	65	M18x1.5	18	28
BF30/04	30	65	M18x1.5 LH	18	28
BF32/01	32	70	M17x1 LH	20	30
BF32/02	32	80	M25x1.5 LH	20	30
BF32/04	32	80	M25x1.5	20	30
BF35/02	35	80	M25x1.5	30	33
BF35/04	35	80	M25x1.5 LH	30	33
BF36/01	36	100	M30x1.5	24	34
BF40/01	40	80	M25x1.5	33	38
BF42/02	42	90	M25x1.5 LH	30	40
BF42/04	42	80	M25x1.5 LH	33	40
BF42/05	42	90	M32x1.5 LH	30	39
BF44/01	44	80	M25x1.5 LH	40	42
BF46/01	46	80	M25x1.5	38	44
BF46/02	46	80	M25x1.5 LH	42	44

BARFEEDER COLLETS
WITH INTERNAL THREAD

BARFEEDER COLLETS



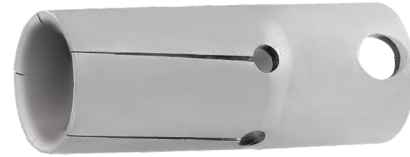
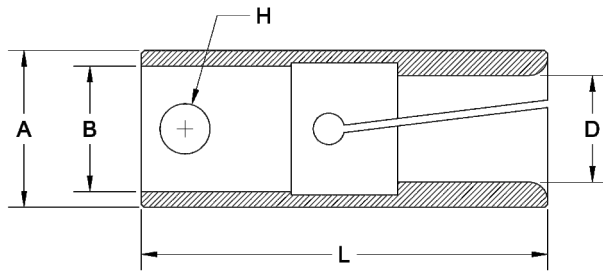
BARFEEDER COLLETS WITH PIN TYPE

All Dimension are in mm - Unless Otherwise Specified

Part Nr.	Guiding Dia	Length	Bore Dia	Hole Dia	Capacity	
					Range	
	ØA	L	ØB	ØH	Ø Min	Ø Max
BF05/02	5	28	3.5	1.5	1	3.5
BF07/04	7	37	5	3	1	5.5
BF10/02	10	40	7	4	1	8
BF12/05	12	40	8	4	1	10
BF15/01	15	55	10	6	3	13
BF15/06	15	40	11	6	3	13
BF15/08	15	50	11	6	3	13
BF15/10	15	55	7	2	3	13
BF16/03	16	65	11	6	3	14
BF16/05	16	40	11	6	3	14
BF17/01	17	55	7	2	13	15
BF17/02	17	45	11	6	5	15
BF19/02	19	57	10	6	3	17
BF19/04	19	57	10	2	3	17
BF19/07	19	40	11	6	13	17
BF20/05	20	56	10	6	13	18
BF20/06	20	65	14	8	3	18
BF22/02	22	65	14	8	18	20
BF25/02	25	65	20	8	3	23
BF25/03	25	76	16	8	3	23

* table to be continued

BARFEEDER COLLETS



BARFEEDER COLLETS WITH PIN TYPE

All Dimension are in mm - Unless Otherwise Specified

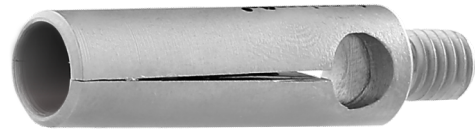
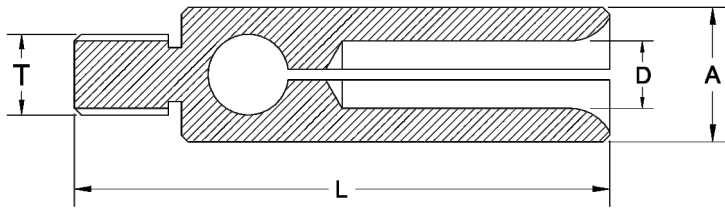
Part Nr.	Guiding Dia	Length	Bore Dia	Hole Dia	Capacity	
					Range	
	ØA	L	ØB	ØH	Ø Min	Ø Max
BF30/02	30	65	20	8	23	28
BF32/05	32	65	20	8	28	30
BF32/06	32	76	16	8	23	30
BF34/01	34	90	20	8	18	32
BF35/03	35	65	20	8	30	33



An ISO 9001:2008
Certified Company

tecnicrafts®

BARFEEDER COLLETS



BARFEEDER COLLETS WITH EXTERNAL THREAD

All Dimension are in mm - Unless Otherwise Specified

Part Nr.	Guiding Dia	Length	Thread	Capacity	
				Range	
				Ø Min	Ø Max
	ØA	L	T		
BF5.5/01	5.5	31	M3	1	4
BF7/02	7	40	M6x1LH	1	5
BF8/01	8	40	M6x1	1	6
BF10/01	10	40	M6x1LH	1	8
BF11.5/01	11.5	40	M6x1	6	10
BF12/02	12	40	M6x1LH	8	10

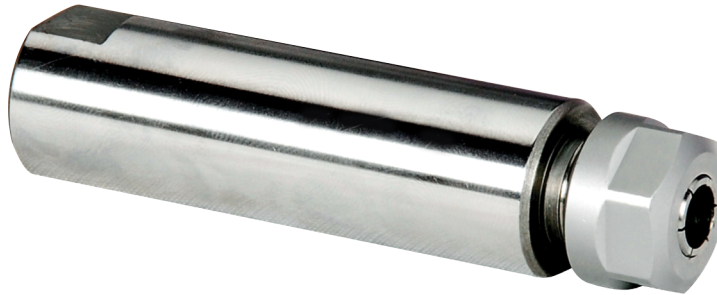
BARFEEDER COLLETS
WITH EXTERNAL THREAD



An ISO 9001:2008
Certified Company

tecnicrafts®

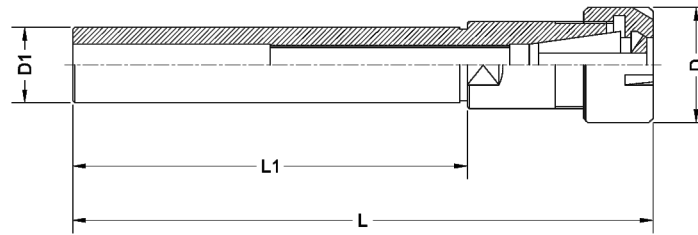
ER SPINDLES



- Range of Cylindrical ER Collet Shanks made from high quality special steels under controlled process
- The Shank is made to h6 standards for providing higher accuracy and tool life
- The Run-out is maintained within 0.005mm from shank dia to ERcavity taper
- Used for a wide range of tool holding application in Maching centers, Swiss type automatic lathes for drilling, milling application
- Wide Variety of shanks types - including Round, Round with flat in Single / Double ends offered in both metric and Inch Sizes
- These Cylindrical shanks are supplied with clamping nuts (without ER Collet)
- The shanks can be provided with back-up screw - upon request

ER SPINDLES

ER CYLINDRICAL HOLDERS



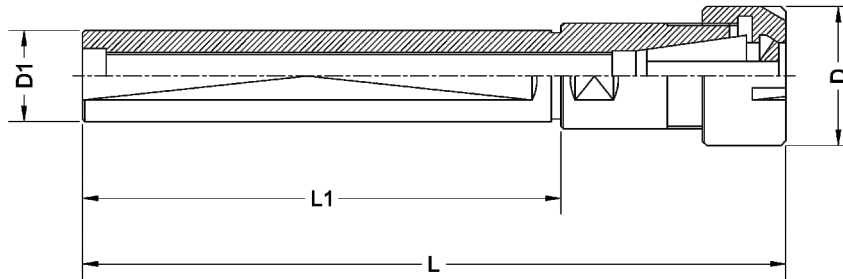
Single End - ER Cylindrical Holders with Mini Nut - Inch series

Part Nr.	ØD mm	ØD1 mm	L mm	L1 mm
ERS/SE-3/8" x 070 / ER 8 M	12	9.52	93.0	70
ERS/SE-1/2" x 140 / ER 11 M	16	12.7	169.5	140
ERS/SE-1/2" x 140 / ER 16 M	22	12.7	177.0	140
ERS/SE-5/8" x 150 / ER 11 M	16	15.87	172.5	150
ERS/SE-3/4" x 155 / ER 16 M	22	19.05	181.5	155
ERS/SE-3/4" x 100 / ER 16 M	35	19.05	147.0	100
ERS/SE-1" x 155 / ER 20 M	28	25.5	181.5	155

Single End - ER Cylindrical Holders with Mini Nut - Metric series

Part Nr.	ØD mm	ØD1 mm	L mm	L1 mm
ERS/SE 06 x 045 / ER 11 M	16	6	71.5	45
ERS/SE 07 x 045 / ER 11 M	16	7	71.5	45
ERS/SE 08 x 080 / ER 8 M	12	8	106.0	80
ERS/SE 08 x 056 / ER 11 M	16	8	82.5	56
ERS/SE 10 x 060 / ER 16 M	22	10	98.5	60
ERS/SE 12 x 080 / ER 8 M	12	12	97.0	80
ERS/SE 12 x 080 / ER 16 M	22	12	118.5	80
ERS/SE 15 x 100 / ER 20 M	28	15	142.5	100
ERS/SE 16 x 150 / ER 11 M	16	16	171.0	150
ERS/SE 16 x 100 / ER 20 M	28	16	142.5	100
ERS/SE 20 x 155 / ER 16 M	22	20	181.5	155
ERS/SE 25 x 155 / ER 20 M	28	25	181.5	155

ER CYLINDRICAL HOLDERS



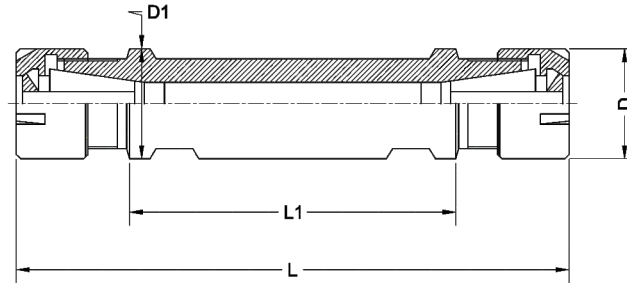
Single End - ER Cylindrical Holders - Flat with Mini Nut - Inch series

Part Nr.	ØD mm	ØD1 mm	L mm	L1 mm
ERS/SE-F- 5/8" x 043 / ER 8 MF	12	15.875	58	43
ERS/SE-F- 3/4" x 115 / ER 11 MF	16	19.05	135	115
ERS/SE-F- 3/4" x 050 / ER 16 MF	22	19.05	78	50
ERS/SE-F- 3/4" x 070 / ER 16 MF	22	19.05	98	70
ERS/SE-F- 3/4" x 120 / ER 16 MF	22	19.05	148	120
ERS/SE-F- 1" x 075 / ER 16 MF	22	25.4	103	75
ERS/SE-F- 1" x 100 / ER 16 MF	22	25.4	128	100
ERS/SE-F- 1" x 100 / ER 20 MF	28	25.4	128	100
ERS/SE-F- 1" x 140 / ER 20 MF	28	25.4	168	140

Single End - ER Cylindrical Holders - Flat with Mini Nut - Metric series

Part Nr.	ØD mm	ØD1 mm	L mm	L1 mm
ERS/SE-F- 16 x 038 / ER 11 MF	16	16	58	38
ERS/SE-F- 16 x 140 / ER 11 MF	16	16	160	140
ERS/SE-F- 20 x 050 / ER 16 MF	22	20	78	50
ERS/SE-F- 20 x 120 / ER 16 MF	22	20	148	120
ERS/SE-F- 20 x 140 / ER 16 MF	22	20	148	140
ERS/SE-F- 22 x 038 / ER 16 MF	22	22	66	38
ERS/SE-F- 22 x 070 / ER 16 MF	22	22	98	70
ERS/SE-F- 22 x 100 / ER 16 MF	22	22	128	100
ERS/SE-F- 22 x 080 / ER 20 MF	28	22	119	80
ERS/SE-F- 22 x 070 / ER 25 MF	35	22	117	70
ERS/SE-F- 25 x 065 / ER 16 MF	22	25	93	65
ERS/SE-F- 25 x 100 / ER 20 MF	28	25	128	100
ERS/SE-F- 25 x 154 / ER 20 MF	28	25	182	154
ERS/SE-F- 25 x 075 / ER 25 MF	35	25	122	75
ERS/SE-F- 25 x 145 / ER 25 MF	35	25	181	145
ERS/SE-F- 32 x 070 / ER 25 MF	35	32	100	70

ER CYLINDRICAL HOLDERS



Double End - ER Cylindrical Holders - Flat with Mini Nut - Inch series

Part Nr.	ØD mm	ØD1 mm	L mm	L1 mm
ERS/DE-F- 5/8" x 015 / ER 8 MF	12	15.875	45	15
ERS/DE-F- 5/8" x 025 / ER 8 MF	12	15.875	55	25
ERS/DE-F- 3/4" x 040 / ER 11 MF	16	19.05	80	40
ERS/DE-F- 3/4" x 070 / ER 11 MF	16	19.05	110	70
ERS/DE-F- 3/4" x 090 / ER 11 MF	16	19.05	130	90
ERS/DE-F- 3/4" x 055 / ER 16 MF	22	19.05	107	55
ERS/DE-F- 1" x 062 / ER 16 MF	22	25.4	118	62

Double End - ER Cylindrical Holders - Flat with Mini Nut - Metric series

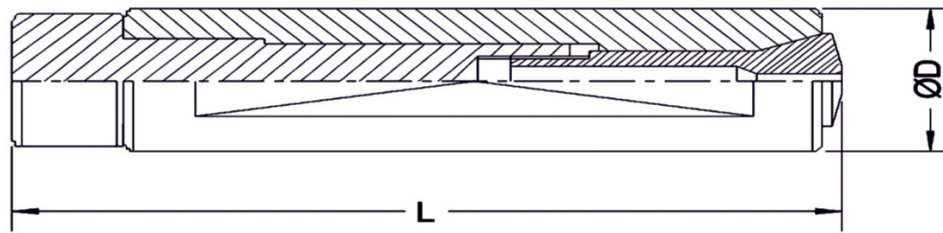
Part Nr.	ØD mm	ØD1 mm	L mm	L1 mm
ERS/DE-F-16 x 050 / ER 11 MF	16	16	90	50
ERS/DE-F-20 x 030 / ER 11 MF	16	20	70	30
ERS/DE-F-20 x 050 / ER 11 MF	16	20	90	50
ERS/DE-F-20 x 055 / ER 16 MF	22	20	107	55
ERS/DE-F-22 x 055 / ER 16 MF	22	22	111	55
ERS/DE-F-22 x 075 / ER 16 MF	22	22	131	75
ERS/DE-F-25 x 062 / ER 16 MF	22	25	118	62
ERS/DE-F-32 x 055 / ER 20 MF	28	32	111	55
ERS/DE-F-32 x 075 / ER 20 MF	28	32	131	75



An ISO 9001:2008
Certified Company

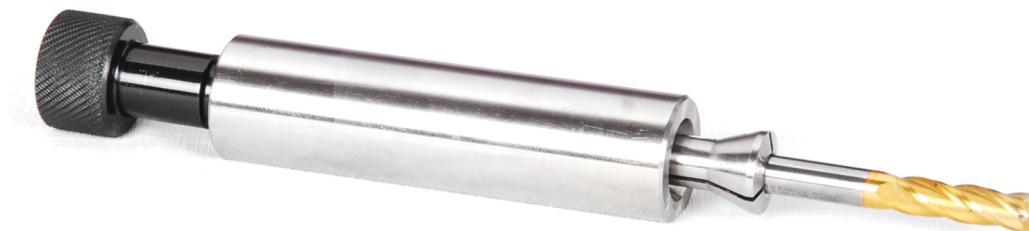
tecnicrafts®

B8 - High Precision Cylindrical Holders



B8 - High Precision Cylindrical Holders - Flat

Part Nr.	D mm	L mm	Application
PCS/SE-F- 16 x 060 / B8	16	60	Tornos Micro-7 / Micro-8
PCS/SE-F- 5/8" x 060 / B8	5/8"	60	Citizen R04 / R07
PCS/SE-F- 16 x 100 / B8	16	100	Star SR10J / Tornos Micro-7
PCS/SE-F- 3/4" x 100 / B8	3/4"	100	Citizen C16 / M16
PCS/SE-F- 22 x 100 / B8	22	100	Star SB16 / Sr20



B8 - HIGH PRECISION
CYLINDRICAL HOLDERS



An ISO 9001:2008
Certified Company

tecnicrafts®

SPECIAL / CUSTOMIZED SOLUTIONS



We produce Croco Collets, Wave Guide Bushings, Hexagon, Square & Special Profiles.

Our dedicated manufacturing team can support all your custom work holding needs

to meet your "Special" Swiss turning requirements.

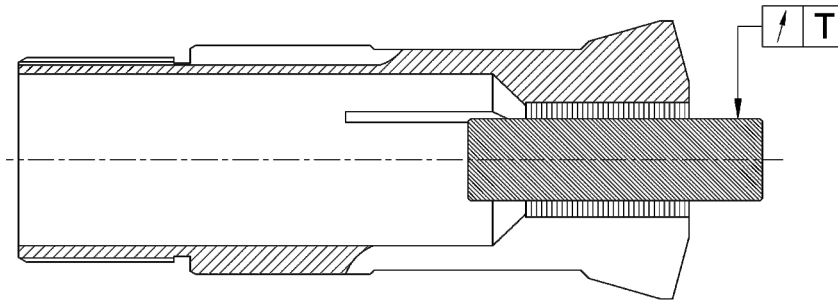
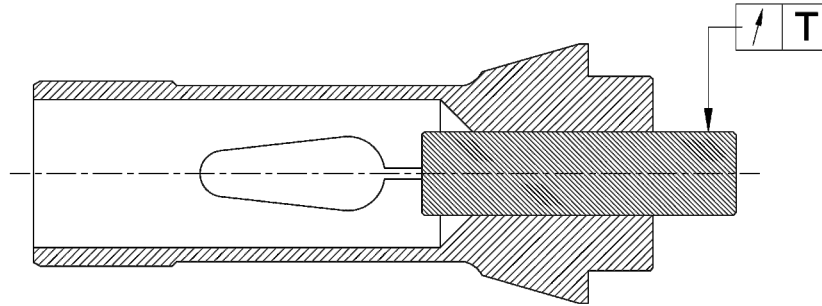
SPECIAL / CUSTOMIZED SOLUTIONS



An ISO 9001:2008
Certified Company

tecnicrafts®

Run Out Tolerance



Run Out Tolerance

All Dimension are in mm - Unless Otherwise Specified

Bore Size	Round Bores (T Maximum)		Hex. / Sq. Bores (T Maximum)	
	Standard Precision	Ultra Precision	Standard Precision	Ultra Precision
1.00 - 10.00	0.010	0.005	0.060	0.030
10.01 - 20.00	0.015	0.008	0.060	0.040
20.01 - 30.00	0.020	0.010	0.060	0.040
30.01 - 40.00	0.025	0.012	0.060	0.040

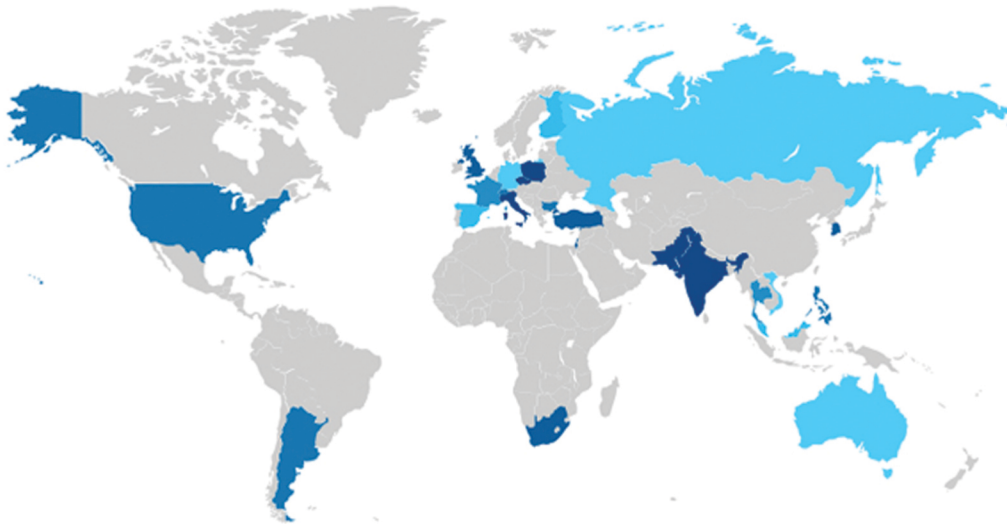
We constantly upgrade our products and therefore the specifications contained in our Catalog are only for guidance purpose and are subject to change without notice.



An ISO 9001:2008
Certified Company

tecnicrafts®

Distribution



India:

(Excluding , Tamilnadu, Kerala, Karnataka & Andra Pradesh)

M/s : SRUJAN SOLUTIONS

Flat No. 201, Plot No:13, Siddhivinayak Society,
S.No: 432, Near Karve Statue, Kothrud,
Pune - 411038. Maharashtra.

Ph: +91 20 64004102 / 8554984508.

Web: www.srujansolutions.com ,

E-mail: sales@srujansolutions.com

World Wide:



ARGENTINA



AUSTRALIA



CZECH REPUBLIC



FRANCE



GERMANY



HONGKONG



ITALY



VIETNAM



PHILIPPINES



POLAND



RUSSIA



SINGAPORE



SOUTH AFRICA



SOUTH KOREA



SPAIN



SWITZERLAND



THAILAND



TURKEY



UNITED KINGDOM



UNITED STATES



TECNICRAFTS INDUSTRIES

SF No. 186/4 (New No. 9/1), Private Industrial Estate – South, SIDCO, Coimbatore – 641 021

Tamil Nadu – INDIA. Tel.: 0091-422-4278039 | Fax: 0091-422-4278040

Email: info@tecnicrafts.com, Website: www.tecnicrafts.com