

UK PROGRAMMES



**The Training  
Partnership**  
*discover who you are*

WORLD CLASS PROGRAMMES CREATED ESPECIALLY FOR YOU!





 BRISTOL

Dartmoor National Park

EXETER 

NEWQUAY

TORBAY

PLYMOUTH 



One of the most stunning locations in the UK with miles of coastline to explore, beautiful beaches, glorious countryside and National Parks all within easy reach of our offices in Torbay. Travel is easy with airports at Bristol and Exeter and ferries from Plymouth to Roscoff and Santander.

Welcome to the beautiful south west

## The Training Partnership

- 20 year track record of developing and delivering exceptional programmes
- Database of over 400 employers increasing every year as we move into new sectors
- Over 300 homestays
- Head office in beautiful Torbay – *The English Riviera*



Talk to us

Give us a call today, or email us to find out more about becoming a TTPL partner

## What you get

- Experts who understand your needs
- Programmes developed for you
- Support and advice on funding bids
- Hundreds of work placement opportunities – Engineering, IT, hospitality and many more
- Friendly host families and other accommodation options
- Programmes in 'The West Country' - the most beautiful part of England
- Exceptional support for trainees
- Exciting social programme



# CONTENTS

- 3 WELCOME TO THE TRAINING PARTNERSHIP
- 4 WELFARE AND SOCIAL PROGRAMME
- 6 ACCOMMODATION
- 7 ERASMUS+ AND WORK EXPERIENCE PROGRAMMES
- 13 TEACHING AND LIFE SKILLS PROGRAMMES
- 18 LANGUAGE AND EMPLOYABILITY PROGRAMMES
- 23 HOW TO APPLY

# WELCOME

## Welcome from TTPL

A very warm welcome from the team at the Training Partnership Limited. For 20 years we have been working with partner organisations around the world to provide the very best programmes possible. We achieve fantastic results, creating programmes that meet your needs and provide brilliant educational experiences for your trainees and employees.

## Discover who you are

People who take part in our programmes love them. In 2015, nine out of ten trainees on programmes with us rated their experience as an 8, 9 or 10 out of 10! And 96% of our trainees say they would definitely recommend us to others.

Take a look at the programmes we offer – there are details in the brochure. All have fantastic satisfaction rates from trainees. And remember, we can work with you to create bespoke programmes that are perfect for you, your trainees and employees.

So, talk to us today about how you can become a TTPL partner. Call us on +44 (0)1803 321210 or email [info@ttpl-uk.com](mailto:info@ttpl-uk.com).

We look forward to hearing from you very soon.

## Nadine

Nadine Stroud  
Business Development Director





## So much to do...

MONDAY	Welcome Meeting
TUESDAY	Language café
WEDNESDAY	Pizza with new friends
THURSDAY	Social meeting
FRIDAY	Night out

# WELFARE AND SOCIAL PROGRAMME

## Discover who you are with an exciting and varied social programme

We work hard to make sure everyone enjoys their time with us. Our fun and lively social activities are designed to suit the many different people who participate in our programmes.

- Regular social meetings
- Events and trips
- Weekly Language Café
- Facebook group to share news, events and activities
- Student Ambassadors

Days out and weekend excursions can also be arranged. We are always happy to offer advice on where to go and what to do.



### Talk to us

Give us a call today, or email us to find out more. Call +44 (0)1803 321210 or email [info@ttpl-uk.com](mailto:info@ttpl-uk.com)



"From our first applicant in January 2014 to now we have been extremely happy with the service TTPL has been providing us and our students. Not only do they welcome our students warmly and provide an extensive introduction during their first days, but they also don't ever hesitate to go the extra mile to make each and every student's experience as enjoyable as possible! Thanks a lot TTPL!"

Julia Praktikawelten, Germany



"I had a really amazing time here in England, thanks to TTPL. During the student meetings I met incredible people who I'm still in contact with and made really good friends. Thank you TTPL for that!"

Marina Walcher, Germany



"The stay in England was very well organised by TTPL. I really like the meetings on Tuesday evening in a café with other students, and activities on Thursday that allow us to have fun and make more friends, and open up to other cultures. I thank TTPL for this stay. It will remain a very good memory."

Estelle, France



## Included

Included in the welfare package is:

- Welcome meeting
- 24/7 UK emergency contact no.
- Dedicated Student Support officers
- 3 contact meetings each week
- Facebook pages and groups
- Student Ambassadors
- Assisted work placement start
- Assisted medical appointments
- Office access Mon – Fri 9am-5pm



## Socialise

The busy social programme helps people make new friends, explore the local area and find out more about life in Britain. Here's a taster of some of the many activities we arrange:

- Bowling
- Barbecues
- Pizza at the beach
- Museum visits
- Cinema trips
- Visits to the zoo
- Cream Tea experience
- Kents Cavern





# ACCOMMODATION

**When it comes to accommodation there are options for all budgets**

Living in a homestay is a great way to embrace English culture and improve English language skills. Our families provide a safe and friendly environment for participants to develop their cultural and communication skills.

We select our families very carefully. All are regularly inspected by our Accommodation team, so that we can offer the very best experience possible to participants.

Families are asked to treat their guests like a member of their family and include them in their weekly activities if they wish.

Participants who prefer more independent living can be offered accommodation in a shared apartment or within a family home where they are responsible for their own laundry, cooking, cleaning and shopping.

Accommodation is sourced according to requirements and location, as close to the work place as possible.

## Options

- Half Board – Breakfast and Evening Meal Provided
- Full Board – Breakfast, Lunch and Evening Meal Provided
- Self-Catering – Room only with shared use of all facilities

*"Loveliest host family ever! They have helped me to enjoy my stay in Torquay. The school is also fantastic!! Very kind and I have learned so much! Thank you for everything!!"*

Tania, Spain



Talk to us

Give us a call today, or email us to find out more. Call +44 (0) 1803 321210 or email [info@ttpl-uk.com](mailto:info@ttpl-uk.com)

# ERASMUS+ AND WORK EXPERIENCE



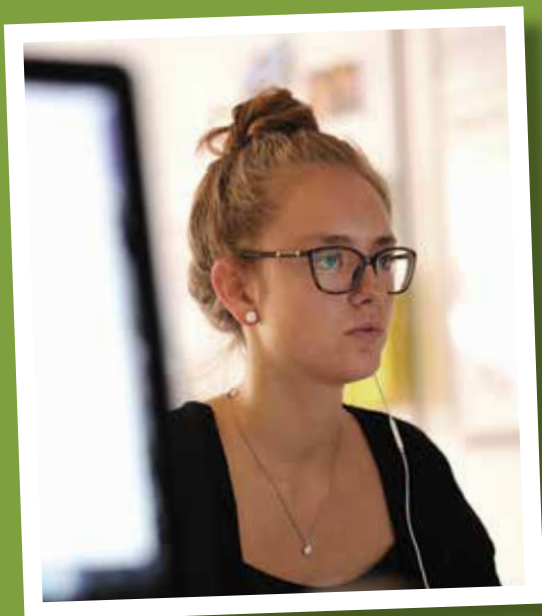
## Why not...

encourage your participants to join our LinkedIn Alumni Group?



*"I've been working for many years with companies that deal with mobility and I have to say that I love working with TTPL, they are serious, formal and professional."*

Angels, Fundacion IDEE, Spain



# ERASMUS+



## We are Erasmus+ experts and will work with you to develop programmes and funding applications

We have been the Receiving or Sending partners on over 150 successful Mobility, VETpro and TOI European projects over the last 5 years and we continue to collaborate with partners under the Erasmus+ framework.

Our programmes are highly adaptive and easily complement the Key Action 1 & 2 Objectives for VET, Adult Education, Schools and Higher Education funding.

For Key Action 1 Mobility projects we can provide you with a bespoke programme that suits your organisation objectives. We adhere to the European Quality Charter for Mobility and always work within the Quality Commitment for Training Placements.

20 years of experience means we can be a valuable asset to your Key Action 2 Strategic Partnerships or Knowledge Alliances projects.



Give us a call today, or email us to find out more. Call +44 (0)1803 321210 or email [info@ttpl-uk.com](mailto:info@ttpl-uk.com)





# VET PROGRAMMES AND STUDY VISITS

These popular, highly adaptable courses are a big hit with our partners



Our Vocational, Education and Training Programmes (VET) are very popular, in particular the Teaching, Nursing, Security and Inclusion in Education packages that offer 1-2 weeks of study visits and seminars in specialist areas. These short programmes can be developed to suit most projects and sectors.

If you are thinking of submitting a Key Action 1 bid for your staff or learners, talk to us and we can design a programme which will match your criteria and meet Mobility objectives.

You can add additional weeks to the study visit and incorporate work experience, cultural meetings or job shadowing to your project.

*"For four years, students of our Nursing School have participated in a study journey organised with TTPL. Each time, the students are very enthusiastic and satisfied by the activities and the rich exchanges with the health care professionals. I'm always impressed by the quality of the services of the TTPL team, their commitment and professionalism. Merci beaucoup!"*

Marie H el ene, Institut de Formation en Soins Infirmiers de Quimper, France.





## Included

- Organisation of suitable work placement
- Organisation of carefully selected accommodation
- Meeting by representative on arrival
- Welcome pack
- Comprehensive welcome meeting
- Accompanied work placement start
- Weekly Social meeting
- Weekly Language Café
- 24/7 Emergency phone support
- Accompanied visits to Doctor, Dentist etc.
- Certificate of participation
- Strict health and safety checks for work placements

## Here's our A-Z of opportunities...

ACCOUNTANCY  
 BAKERY  
 CHILDCARE  
 DENTISTRY  
 ENGINEERING (most sectors)  
 FINANCE  
 GRAPHIC DESIGN  
 HOSPITALITY  
 INFORMATION TECHNOLOGY  
 JOURNALISM  
 KITCHEN PORTER  
 LABORATORY AND LAW  
 MARKETING  
 NETWORK ENGINEER  
 OPTOMETRY  
 PRINTING AND PUBLISHING  
 QUEEN OF ENGLAND (only joking!)  
 RETAIL  
 SHEET METALWORK  
 TEACHING  
 UNIVERSITY START-UPS  
 VEHICLE REPAIR  
 WEB DESIGN  
 XCELLENT STANDARDS  
 XCELLENT RESULTS!  
 YOUTH WORK  
 ZOOLOGY  
 plus many, many more

# WORK EXPERIENCE PROGRAMMES (UNPAID)

**We have placement opportunities across most sectors to help people progress their career**

We offer the highest quality unpaid work placements across all sectors of industry from administration and tourism, to mechanical engineering and technology. There are not many areas of business that we don't work in!

We are constantly managing and growing our exceptional portfolio of employers to ensure participants experience training that will maximise their career prospects whilst developing their English language skills.

Work placements are secured according to the needs, skills and career objectives of each participant.

All of our placement companies abide by current UK legislation, have valid insurance and comply with our own Health and Safety standards which can be found on our website.

*"My company gave me the opportunity to learn a lot about a big multinational business, about my department, and they have opened my mind and showed me different ways to work. Most importantly they gave me the opportunity to learn and improve my English."* Miguel, Spain







*"It isn't just what the students can learn from us, it is what we can also learn from them!"*

Katherine Allen, Bay Advocates Ltd, work placement company



**Talk to us**

Give us a call today, or email us to find out more. Call +44 (0)1803 321210 or email [info@ttpl-uk.com](mailto:info@ttpl-uk.com)



Requirements vary according to each role but participants must be at least 16 years old and have a minimum B1 English level. Programmes can be tailored to suit those with both with previous experience and those with minimal training.

*"From introductions to final goodbyes TTPL were there every step of the way and the students we have had the pleasure of joining us have been excellent!"*

Richard Nethercliff, Insignia Creative, work placement company

**Who can take part?**

The programme is available for anyone with EU citizenship aged 17 to 80 years old, regardless of their academic background. For professional placements, a minimum B1 level of English (Common European Framework for Languages) is requested.



## Included

- Organisation of suitable work placement
- Carefully selected self-catering accommodation x 6 weeks
- Meeting by representative on arrival
- Welcome pack with lots of useful info
- Comprehensive welcome meeting
- National Insurance appointment
- Accompanied bank appointment
- Accompanied work placement start and full induction
- Regular Social Meetings
- 24/7 Emergency phone support
- Accompanied visits to doctor, dentist etc.
- Certificate of participation
- Strict health and safety checks for work placements

## Opportunities include

- Hotel
- Restaurant
- Holiday Park
- Tourist Attraction
- Retail/Food Service

# WORK EXPERIENCE PROGRAMMES (PAID)

**Our brilliant business contacts allow us to provide a limited selected of paid work placement opportunities**

We offer full time paid placements ranging from 6 – 26 weeks within the hospitality and tourism sectors.

Requirements vary according to each role but participants must be at least 18 years old and have a minimum Upper B1 English level. We have programmes to suit those with previous experience and those with none or little experience. Generally the type of work will be determined by the participant's level of English. If participants have a high level of English they can expect to be in a customer service role. For those with lower levels the tasks could include housekeeping and kitchen duties.

As employees, participants will be paid at least the UK National Minimum Wage but are expected to bring enough funds to live on for at least the first six weeks of the programme.

### Accommodation

For the first six weeks participants are in self-catering accommodation. They can then either continue in that accommodation, and pay The Training Partnership directly, or secure their own apartment.



## Talk to us

Give us a call today, or email us to find out more. Call +44 (0)1803 321210 or email [info@ttpl-uk.com](mailto:info@ttpl-uk.com)



# TEACHING PROGRAMMES



## Included

- Six weeks of vocational work experience in a local school as a Classroom Assistant
- Classroom Based Sessions delivered by qualified UK teachers and industry experts
- Cross Cultural Communication skills
- Conversational English
- Organisation of carefully selected accommodation
- Meeting by representative on arrival
- Welcome pack
- Comprehensive welcome meeting
- Accompanied work placement start
- Weekly Language Café
- Weekly Social meeting
- 24/7 Emergency phone support
- Accompanied visits to Doctor, Dentist etc.
- Certificate of participation
- Strict health and safety checks for work placements

# TEACHING ASSISTANT PROGRAMME

**A real-life work experience in a Primary or Secondary School accompanied by high quality training delivered by industry professionals**

We are supported by over 30 local schools who are keen for their pupils to experience different cultures and teaching styles.

We offer great opportunities for qualified teachers, graduates and undergraduates interested in the education sector. This is a specialised six-week programme that includes unpaid work experience and a bespoke training course focusing on the British education system.

*"It is always a pleasure to have the opportunity of placing our participants with the Training Partnership because of its team's great treatment and commitment and its programmes' high standards."*

*José Manuel, Spanish Teachers, Spain*





# TEACHING SKILLS AND STUDY VISITS

Gain the best advantage possible with focused training



## Talk to us

Give us a call today, or email us to find out more. Call +44 (0)1803 321210 or email [info@ttpl-uk.com](mailto:info@ttpl-uk.com)

We have teamed up with local education specialists in Exeter to offer a brilliant mix of classroom and practical training for teachers who need to update their skills or refresh their knowledge.

We offer several courses suitable for teachers of English or for industry professionals who teach in the English language at any level, in any sector.

### You could choose from:

**1 week Intensive Teaching Course suitable for those who are new to the classroom**

**2 week programme of Teaching skills and General English classes with visits to local educational establishments**

**2 week programme of Teaching methodology and General English with visits to relevant local businesses**

This is a mix of language development, methodology and study visits.

All of the programmes are eligible for funding through Erasmus+ and we are happy to adapt the syllabus to suit the needs of individual groups.



## Included

- Organisation of classes and visits
- Organisation of carefully selected accommodation
- Meeting by representative on arrival
- Welcome pack
- Comprehensive welcome meeting
- 24/7 Emergency phone support
- Accompanied visits to Doctor, Dentist etc.
- Weekly Language Café
- Weekly Social meeting
- Certificate of participation

You can add additional weeks to incorporate work experience or job shadowing.

*"Laura was a great asset in the classroom and the children loved working with her, she was very personable, working extremely well with other adults and forming very positive relationships with the children."*

Nina Rothery, Broadclyst Primary School





## Included

- Full board accommodation in shared yurts
- All meals
- Shared bathroom facilities
- 24/7 Emergency phone support
- Meeting with Training Partnership representative on arrival
- Welcome pack with lots of useful information
- Certificate of participation

## Examples of Workshops

- Outdoor learning in beautiful surroundings – 'Classrooms without walls'
- Child-led exploration
- Learning journeys from raw material to finished item
- Artistic activities
- Making a contribution and being part of something bigger
- Land use and sustainability
- Natural awareness

# LEADING TEACHERS PROGRAMME

## A transformational leadership programme helping teachers to become leaders to inspire the next generation

This five-day residential programme is developed in partnership with Embercombe, a ground breaking UK charity committed to inspiring our next generation of leaders and learners.

Situated in the beautiful Teign Valley on the edge of Dartmoor National Park in Devon, the programme includes a creative blend of practical activities, workshops, discussion, 1:1 sessions and individual reflection, to help create inspiring teachers.

Participants will explore and enquire into the real heart of values-led leadership in education and understand how acting according to personal values can assist to empower and motivate the next generation.

Embercombe inspires people to take courageous action for a just, peaceful and sustainable world. Available to groups of 5 or more. Please contact us for dates.



## Talk to us

Give us a call today, or email us to find out more. Call +44 (0)1803 321210 or email [info@ttpl-uk.com](mailto:info@ttpl-uk.com)





# SKILLS FOR LIFE FOR YOUNG PEOPLE

Education at Embercombe aims to inspire and connect each individual with their innate love of learning and the natural world



This is a brilliant fun-filled 5-10 day residential programme to support young people in their transition from education to entrepreneurship and employment.

It takes place at Embercombe, a place of beauty, on the edge of Dartmoor National Park in Devon.

The focus is on inspiring and empowering young people to make a positive change in their world.

## Participants will:

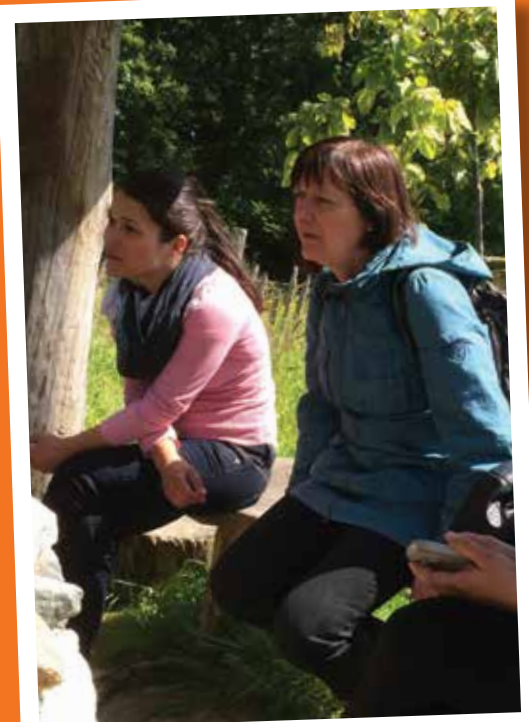
- Speak English in small groups
- Identify individual gifts and skills
- Improve self-confidence
- Learn practical and transferable skills
- Gain a stronger sense of community and the role they play in it
- Understand the powers of a positive relationship with work
- Develop a deeper understanding of sustainability

This specialist programme is available to groups of five or more people. Please contact us for latest dates and fee information.



## Included

- Full board accommodation in shared yurts
- All meals
- Shared bathroom facilities
- 24/7 Emergency phone support
- Meeting with Training Partnership representative on arrival
- Welcome pack with lots of useful information





# LANGUAGE AND EMPLOYABILITY PROGRAMMES



# ENGLISH LANGUAGE COURSES

## Build high quality General or Conversational English language learning into your programme

Our excellent language programmes are offered all year round, in a mixed nationality environment, that helps develop people's cultural and social skills whilst learning English.

Teaching is delivered by a team of accredited staff who have experience of working in both the public and private sectors. Programmes can be held in open or closed groups and adapted to suit individual group needs.

**General English** – 15 hours per week (20 lessons) that focuses on grammar, reading, listening and communication techniques, vocabulary pronunciation and intonation.

**Conversational English** – 3 hours per week (closed or open groups) with activities that focus on development of communication, vocabulary and intonation through discussion of past experiences, current news, cultural awareness and social situations.



## Included

- Organisation of classes
- Organisation of carefully selected accommodation
- Meeting by representative on arrival
- Welcome pack
- Comprehensive welcome meeting
- 24/7 Emergency phone support
- Accompanied visits to Doctor, Dentist etc.
- Weekly Language Cafe
- Weekly Social meeting
- Certificate of participation

## Why not...

encourage your participants to join our LinkedIn Alumni Group?

## Language Café

The Training Partnership runs a regular evening Language Café which is free to attend. Everyone on our programmes is welcome. The café allows people to meet other trainees, speak English in an informal setting, have a chat with one of our representatives and of course, have some fun!



## Talk to us

Give us a call today, or email us to find out more. Call +44 (0)1803 321210 or email [info@ttpl-uk.com](mailto:info@ttpl-uk.com)



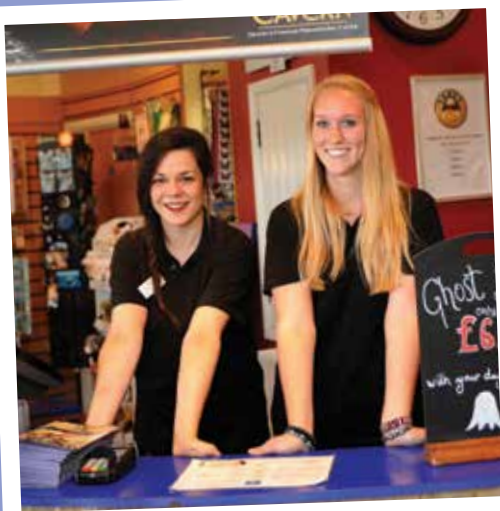


## Included

- Organisation of classes
- Organisation of carefully selected accommodation
- Meeting by representative on arrival
- Welcome pack
- Comprehensive welcome meeting
- 24/7 Emergency phone support
- Accompanied visits to Doctor, Dentist etc.
- Weekly Language Cafe
- Weekly Social meeting
- Certificate of participation

"Going abroad is such a great experience-with the support of TTPL it will get even better. Especially all the pub meetings and Thursday afternoon events are great fun. You always know that there is somebody to rely on and if there is any problem they will help you."

Verene, Germany



# CROSS CULTURAL COMMUNICATION

## For a complete learning experience, add a specialist course to your programme

Cross Cultural Communication training helps people recognise and understand the importance and key skills for good communication, differences in cultures, and situations where potential misunderstandings can arise.

Focusing on the importance of making the right first impression, the course helps people move from mono-cultural behaviour to a multi-cultural mindset.

The course also looks at how culture affects behaviour such as body language, tone of voice, as well as taking a look at education, religion, food and drink, working hours, family connections, history and culture.

The training is adaptable, and can be delivered as a short three-hour session or, to allow more in-depth work, over several sessions depending on your budget and the level of detail and training needed.



Talk to us

Give us a call today, or email us to find out more.  
Call +44 (0)1803 321210  
or email [info@ttpl-uk.com](mailto:info@ttpl-uk.com)

# CULTURAL AWARENESS COURSE

## Get ahead of others looking for work with this highly beneficial course

Accredited by the UK awarding body AptEd, this 18-hour course has been designed to give participants the essential communication skills and confidence necessary to get ahead in today's job market.

The training focuses on recognising and learning how to overcome the challenges that may be experienced in a new environment. It helps people understand and manage cultural differences successfully.

The impact of cultural values and the role played by society is also considered along with an analysis of key terms such as 'Cross Cultural Knowledge', 'Cross Cultural Sensitivity' and 'Cross Cultural Competence'.

Talk to us about how you can build these options into your programme.



# COMMUNICATING WITH CONFIDENCE

## Boost your confidence with this excellent one-off course

This is a short 3-hour programme developed in partnership with Articulacy, specialists in the art of natural communication. The programme teaches you to speak eloquently and without fear in both professional and personal situations.

It is designed to be extremely interactive and encourages participation throughout. It is a classroom-based session, with communication and teaching experts, that focuses on: Speaking to a group, Questions and Answers, Confidence Building and Body Language.



# EMPLOYABILITY SKILLS

## Stand out and gain an advantage in today's competitive job market

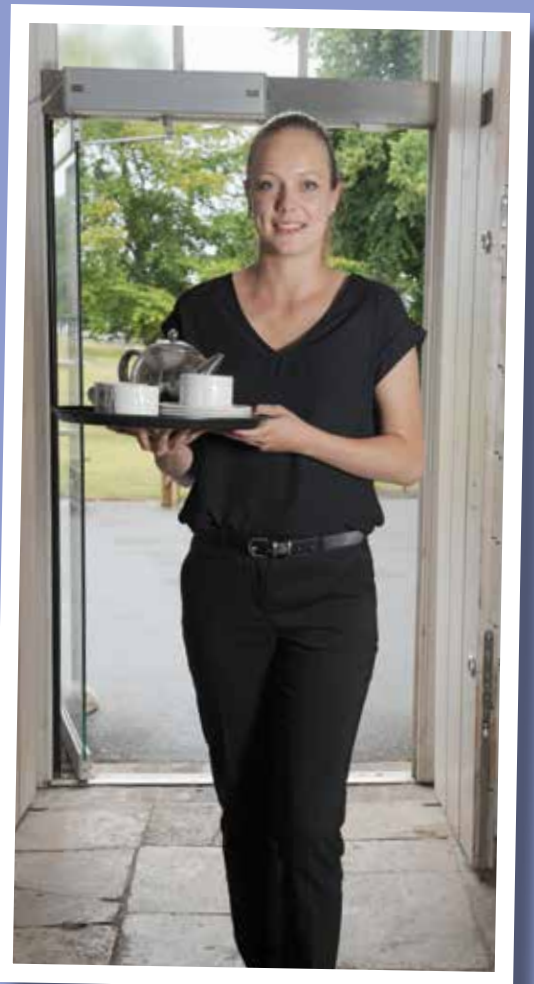
This is available as a 3-hour short course, or a longer, and more detailed, 10-hour programme, designed for young people new to the labour market or still in education.

Focus is on cv development and interview skills, the role of social media and job hunting techniques in the 21st century. Talk to us about how you can build these options into your programme.



## Included

- Organisation of classes
- Organisation of carefully selected accommodation
- Meeting by representative on arrival
- Welcome pack
- Comprehensive welcome meeting
- 24/7 Emergency phone support
- Accompanied visits to Doctor, Dentist etc.
- Weekly Language Cafe
- Weekly Social meeting
- Certificate of participation



## Why not...

include the production of a video CV as an addition to your programme?



*"It's very important for my future work because I have learnt a lot of social skills."*

Lisa Paier (Italy)

## 5 REASONS TO CHOOSE THE TRAINING PARTNERSHIP

1

### It's about the bigger picture

For us, the focus is on the whole experience – quality learning, the great friendships made and priceless experiences. We are proud of our reputation for providing brilliant work placements combined with a lively social programme.

2

### We are in the best place

We are based in one of the most beautiful parts of the UK, in the South West of England, with wonderful cities, countryside and coast.

3

### 24/7 support

We have everything that trainees need – a fantastic range of placements, great language training, support and social activities.

4

### A global network

We collaborate with over 60 partners worldwide and are proud that some of these relationships are nearly as old as we are. You can rely on us to provide the very best service.

5

### Personal approach

We develop programmes to match your objectives – and it works! Since 2013 we've hosted nearly 3000 trainees, providing a range of fantastic work placements, training courses and bespoke study programmes.



*"I absolutely love it. I get young people from all over the world coming to stay with me and I keep in touch with them when they leave. I've been to a wedding of an Italian who stayed with me and another has just got engaged. At Christmas I get so many cards from them all it's lovely to keep in touch."*

Olivia Williams (host mother)



*"I'm having a work experience as a Finance Assistant. My trainers and workmates are very friendly, they are teaching me a lot of things and it is very good for my career progression. Also I have met people from other nationalities and I'm making good friends. Making contact with TTPL was the right decision. I'm improving my English, my interpersonal skills and my knowledge."*

Carmen Barro Ruiz, Spain



# GET IN TOUCH

## Develop your perfect programme today and get in touch to find out more

We hope you have found a programme for you.

As one of the largest and most successful training and work placement companies in the UK, there just isn't enough space to explain the full range of programmes and work placements we are able to offer.

And of course these programmes are just the start. We work with our partners to develop the programmes that best fulfil project objectives.

We have been creating wonderful programmes for partners across the world for 20 years and have a reputation as one of the very best companies in the industry.

We are proud of the quality of our programmes, the support we provide participants and the social programmes we offer.

Check out the latest positive feedback at [www.ttpl-uk.com](http://www.ttpl-uk.com) or see what is going on right now with our trainees on our Facebook page [www.facebook.com/ttpl.torquay](http://www.facebook.com/ttpl.torquay)

To get in touch, email [info@ttpl-uk.com](mailto:info@ttpl-uk.com) to tell us about your individual or group requirements.

Or go to [www.ttpl-uk.com](http://www.ttpl-uk.com) and complete the enquiry form and send us your details.

We are happy to consider all projects and requirements, and have many contacts. If, on the rare occasion we cannot help, we will do our best to connect you to an organisation that can.

Thanks – and we look forward to hearing from you very soon!



## Training Partnership trainees go on to...

- Work for top brands like Nestle, Price Waterhouse and Easyjet
- Progress to higher education courses, Masters Degrees and PHD
- Become entrepreneurs and start their own businesses
- Travel the world!





*"Probably the best  
time of my life so far."*  
Larissa Utich (Germany)



Torbay Innovation Centres  
Lymington Road, Torquay  
Devon TQ1 4BD

☎ Telephone +44 (0)1803 321210

✉ email [info@ttpl-uk.com](mailto:info@ttpl-uk.com)

[www.ttpl-uk.com](http://www.ttpl-uk.com)

f @TTPLuk



**The Training  
Partnership**  
*discover who you are*