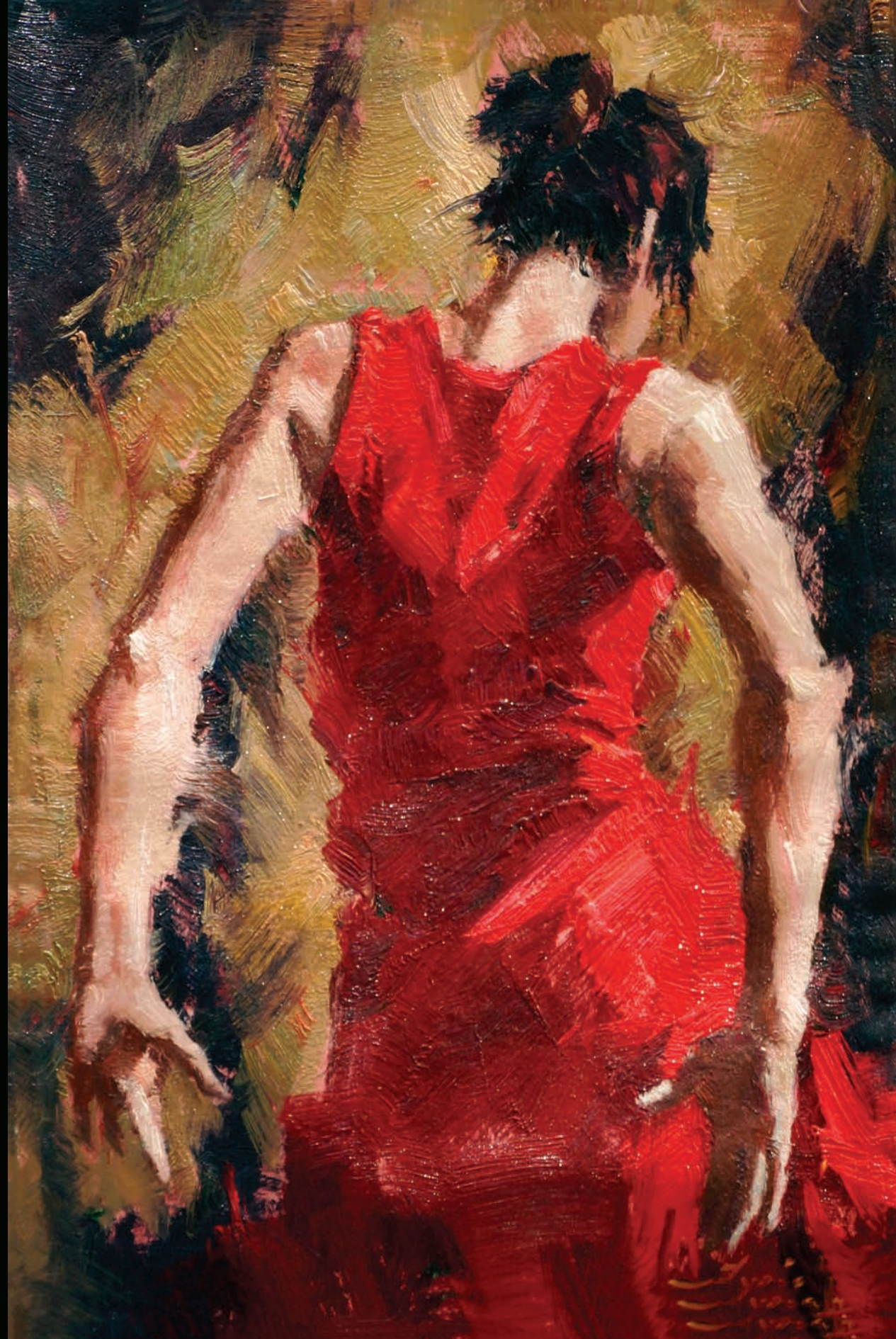


IP



PH PRINTS FROM PH MEDIA

PHMEDIA'S CLIENT BASE BOASTS MANY OF THE CAPITAL'S TOP MUSEUMS AND ART GALLERIES. WE ARE THEREFORE PLEASED TO ANNOUNCE THE LAUNCH OF A SERVICE WHICH IS AIMED AT THE FINE ART INDUSTRY.



MUSEUM

QUALITY





A2 3D

PHMedia are pleased to announce the next extension of their existing pre-press studio. The installation of colour-calibrated lighting and monitors, essential for accurate viewing conditions, ensures correct colour imaging and consistency to the final printed result. Our A2 Three-Dimensional scanning facility for contoured surfaces, such as oil and watercolour or textiles, is capable of capturing both the medium and the texture of the original it is presented on.

Larger sized artwork is copied in our photographic composition studio, which has recently been equipped with a full frame camera. Four large format pro 44inch printers, featuring the Sure Color SC-P9000 10 Colour Ultra Chrome HDX Ink set, produces Giclée fine art printing on the finest Hahnemuhle and Canson stocks, ensuring excellent quality and reproduction.

Our new interactive and intuitive website currently in construction, will enable us to provide these services to our national and international clients offering one of the best fine art reproduction facilities in the UK.

SCANNING





LARGE

REPLICA

PRINTS





PH MEDIA was originally formed to accommodate the pre-press requirements of the magazine industry, evolving into the versatile award-winning company it is today. Long-term and ongoing client relationships, which span over a decade, exist with the majority of the London Museums, as well as leading publications in Fashion and the Contemporary Arts.

Today's exacting standards, plus the subsequent service requirements demanded by this clientele, has led to the fine art division's expansion, from high end retouching and page layout to our eclectic services.

Regarding imagery, traditional values are upheld, with balanced illumination and photographic quality to the forefront. Technological advancements are noted and upgrades integrated so we can favourably assist even the most modern of digital clients. By utilising the latest advances in self-calibrating monitor technology ensures that true colour accuracy is maintained throughout our various workflows, for print or digital format. Currently, we are now one of the only post-production houses able to deliver a complete film and artwork scanning service to A2, in a studio-based, colour controlled environment.

We take pride in our ability to manage client's requirements becoming actively involved in offering technical and creative support pre, during and post print.

To summarise; our awareness of the latest available technology in scanning and printing devices, combined with a skilled workforce finely honed by client expectation, has cultivated those values that are upheld in each department.



PH PRINTS FROM **PH MEDIA**

PH PRINTS FROM PH MEDIA

T. +44 (0) 1726 892210
M. +44 (0) 7802 594088

MICHAEL@PHMEDIA.COM
WWW.PHMEDIA.COM

