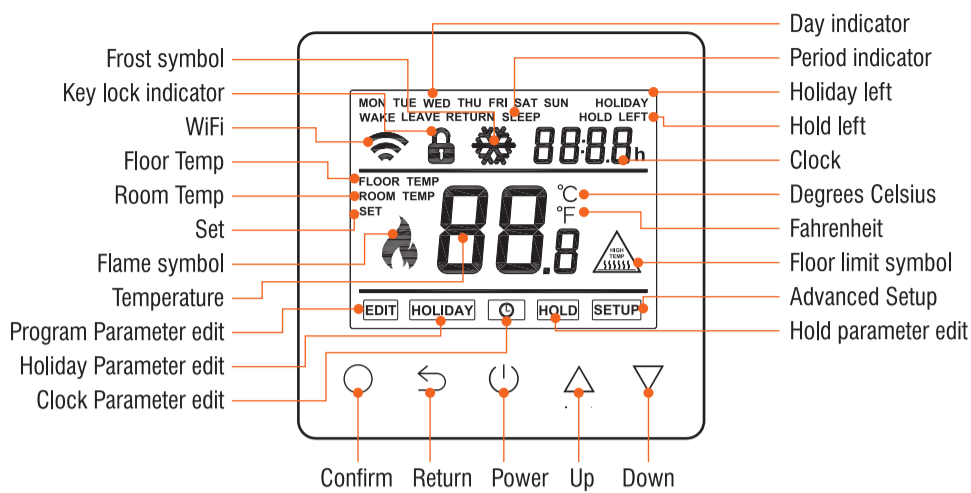


# PRO TOUCH Smart Thermostat

## DISPLAY SYMBOLS



# PRO TOUCH Smart Thermostat

'ProTouch WiFi' app available from



Support: ☎ 01268 567019

www.prowarm.com

## THERMOSTAT DESCRIPTION

The new ProTouch WiFi is a smart thermostat used to control your electric floor heating system or water heating system. It will keep your home at comfortable temperature whilst minimizing energy use. Install the app on your smart phone to control your heating system remotely with the WiFi thermostat.



## MAIN FUNCTIONS

- ✓ Power consumption monitor (in APP)
- ✓ Holiday function
- ✓ Time display
- ✓ Hold function
- ✓ Key-lock
- ✓ Open window detection
- ✓ Off time frost protection
- ✓ Floor temperature limitation
- ✓ Optimum start

## THERMOSTAT DESCRIPTION

### TECHNICAL SPECIFICATION

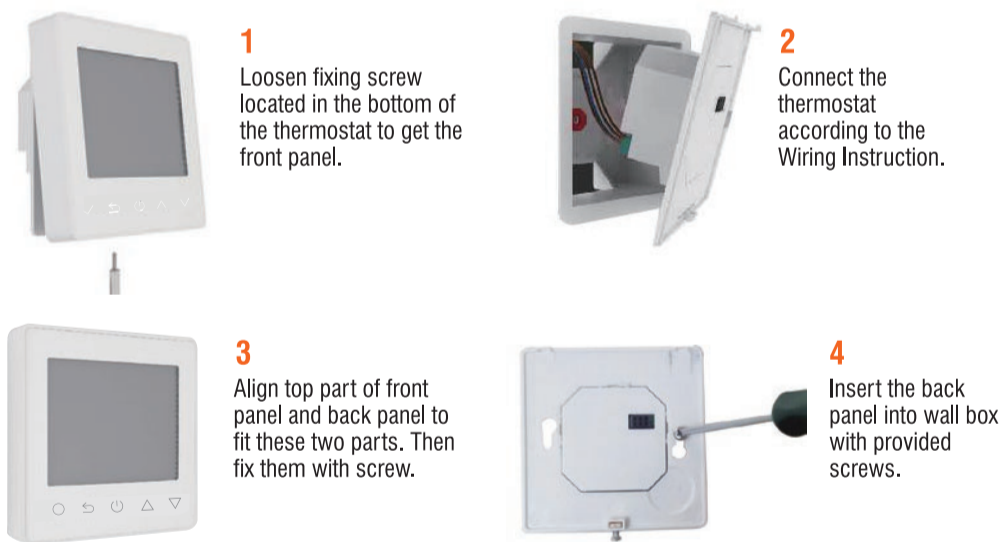
Supply voltage: 50/60Hz 220-2240VAC  
 Max load: 16A  
 Standby power: < 2W IP rating: IP21  
 Max wire diameter: ≤2.5mm<sup>2</sup>



## PRO TOUCH Smart Thermostat

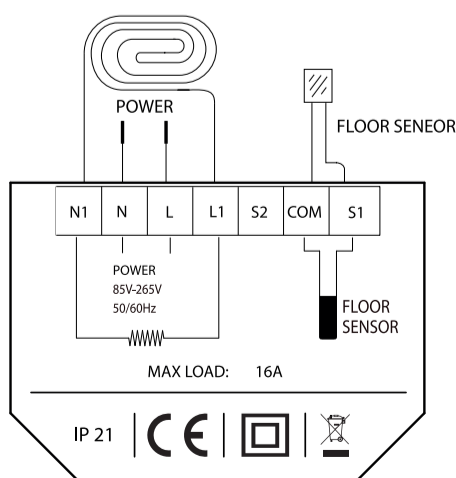
INSTRUCTION MANUAL & USER GUIDE

## INSTALLATION AND WIRING INSTRUCTIONS



**NOTE:** Thermostat should be mounted in a standard 86 type switch box.

## WIRING INSTRUCTIONS



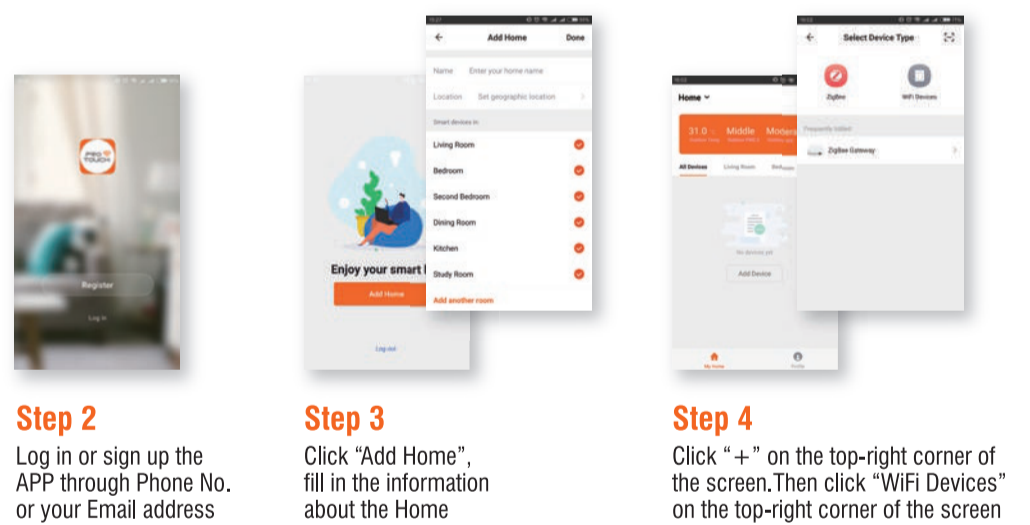
Suggestion: Please keep the max load around 90% of 16A to prolong the lifetime.

**Ensure power is disconnected when wiring!**

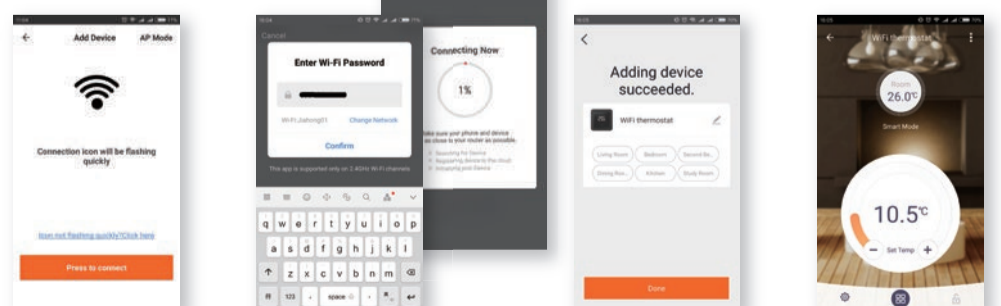
## WIFI CONNECTION

### Step 1

Scan the QR code through mobile browser or download the App from APP Store or Google Play



'ProTouch WiFi' app available from....



### Step 5

Set the thermostat based on APP's instruction. Then click the bottom button

### Step 6

Log in WiFi password and click the button to continue.

### Step 7

When connection is done, Click "Done" or make a new name for your thermostat

### Step 8

You can check the actual temp, change the set temp and other operations on the control interface.

