



Royal Forth Yacht Club

Sailing Instructions 2018

(Racing and Cruising)

List of Contents

INTRODUCTION	2
SAILING CALENDAR	4
CLUB OPEN EVENTS.....	4
CLUB EVENTS	4
RFYC SAILING EVENTS 2018	6
SAILING INSTRUCTIONS - RACING	8
EVENING POINTS, SATURDAY & AUTUMN SERIES AND JOINT PASSAGE RACES.....	11
RACE INSTRUCTIONS	13
OPENING REGATTA	13
EVENING POINTS EARLY / MID / LATE SERIES.....	13
JOINT FRIDAY WHITE SAIL SERIES	13
SATURDAY POINTS EARLY / MID / LATE SERIES	14
JOINT PASSAGE RACE 1 – INCHKEITH TROPHY	15
CORONATION CUP (STERN CHASE).....	15
DINGHY SERIES.....	16
RFYC 150 TH ANNIVERSARY REGATTA / EDINBURGH REGATTA	16
NEILSON PLATE / EARLY SATURDAY SERIES 6.....	16
JOINT PASSAGE RACE 2 – RFYC WEST CUP (FCYC WILSON CUP).....	16
THE CROMBIE CUP.....	17
JOINT PASSAGE RACE 3 – FCYC MARSH & SURREY CUP	17
JOINT PASSAGE RACE 4 CRAWFORD CUP (FCYC SCOTT SHIELD).....	18
SINGLE HANDED RACE	18
CREW RACE.....	19
JOINT PASSAGE RACE 5 (JUBILEE CUP)	19
THE PENNEL TROPHY (STERN CHASE).....	19
THE ROYAL EASTERN REGATTA.....	20
AUTUMN SERIES	20
CRUISING EVENTS	21
CRUISES IN COMPANY	21
SEASON CHALLENGE.....	21
COURSES	23
MID-FIRTH COURSES.....	23
BREAKWATER COURSES.....	26
MARKS.....	27
CHART OF RFYC MARK POSITIONS.....	28
RACING MARKS DISTANCE CHART	29
FCYC FRIDAY WHITE SAIL COURSES	30

INTRODUCTION

The Sailing Committee would like to invite all club members to take part in this season's sailing activities: **club racing**, **cruising** and **open race events**. These Sailing Instructions deal with club racing. Cruising event details will be announced separately on the RFYC website and via email. Separate Sailing Instructions will be published for open events.

Once again there will be racing on most Saturdays of the season, plus occasional Sundays. The popular Evening and Saturday Series are open to FCYC members to encourage larger fleet sizes.

Points to note:

- **Start:** the Evening, Saturday and Autumn Series races will have **three** different fleets which will be based on handicap. All fleets will race over the same course, but may be shortened separately. At the discretion of the race officer, one or more of these fleets may be started separately. Where multiple fleets are being started together, this will be indicated by the hoisting of all of the relevant numeral pennants together.
- **Fleets Flags:** the flags being used to indicate each fleet have changed from previous years – see Instruction 8 for details.
- **Evening Points and Saturday Series:** in order to encourage more members to take part these have been split into three shorter series (an Early, Mid and Late Series).
- **Evening Points:** the tides this season have been challenging and it has been necessary to arrange races at different times and on different days – please check the Sailing Calendar for details.
- The **Festival Series** will also count towards the Evening Points Late. Two sets of results will be provided – Club Handicaps will be used for the Evening Points, but the FYCA Progressive Handicap will be used to calculate the Festival Series results.
- **Saturday Series:** the Royal Eastern Regatta will also count towards the results of the Saturday Series Late.
- **Joint Passage Series:** RFYC and FCYC are both starting races this season. Note that the flags used may vary where a race is started by FCYC – see Race Instructions for details.
- **One Design Classes:** One Design class series results will be produced over the combined season's series races: Evening, Saturday and Autumn Points. This will require 4 or more club boats of a single design to have raced for the class(es) during the season.
- **Average points** for boats carrying out race duties may be awarded for a race series result on application in writing or via email to the Sailing Secretary.
- **White Sail Allowance:** see Instruction 9.4 for a change to the instructions about using a White Sail Allowance. This is to encourage members to still take part in Club Racing even when they are short-handed or have an inexperienced crew.
- The list of **breakwater courses** has been revised, with some infrequently used courses removed and some new courses added. Consequently the whole list has been re-numbered.
- **Cruising:** see the Cruises in Company and Season's Challenge on page 21.

Sailing Calendar: A short version of the sailing calendar is included in this handbook. The full calendar, including tide times and boatman hours, plus notes of other local events, is published on the RFYC web site.

Race Duties: As always, the club relies on members to be race officers, committee boat drivers and safety boat drivers plus assistants to facilitate racing. The **DutyMan** online system will be used to administer allocation and swapping of duties. **If you are unable to fulfil your duty it is your responsibility to arrange a swap.** If you have any problems with a duty please let a member of the Sailing Committee know as soon as possible.

Safety – Club Rules: Competitors are reminded that the decision to race and thus safety whilst on the water is the responsibility of the skipper. **The following safety guidelines apply to all RFYC events:**

Keelboats – Unless otherwise defined in the Race Instructions boats shall comply with FYCA Safety Regulations, Category 4R. See <http://fyca.org.uk/wp-content/uploads/2017/06/fycasafetyregsiss4.pdf> and RFYC Instruction 16 for details.

All yachts should carry an alternative means of propulsion and a **VHF marine transceiver**, either hand held or permanently installed.

Dinghies – RFYC Dinghy Racing Safety Procedures, see:

<http://www.rfyc.org/wp-content/uploads/RFYC-Racing-safety-procedures.docx>

- There must be a safety boat on the water with two crew on board for dinghy racing & training.

Safety RIBs are provided by the club for dinghy racing and training but not at other times or for other events. RIBs may be present for keelboat racing to assist the Race Officer (e.g. for mark laying) but are not intended to provide safety cover. The presence of RIBs does not diminish the responsibilities of a boat's skipper.

Happy Sailing from the RFYC Sailing Committee!

SAILING CALENDAR

Club Open Events

Event	Date	Class
RYA Push The Boat Out	Sun 13 th May	Dinghies, Keelboats
150 th Anniversary Parade of Sail	Sat 2 nd June	Keelboats
RFYC 150 th / Edinburgh Regatta	Fri 22 nd – Sun 24 th June	Keelboats
Festival Series	Tue 14 th – Thu 16 th August	Keelboats
RFYC One Design Regatta	Sat 18 th – Mon 20 th August	Keelboats

Club Events

Event	Type	Dates/Schedule	Class	SIs
Practice Races	-	Mon 23 rd April	Keelboats	TBA
Opening Regatta	Club regatta – 3 races	Sat 28 th April	Keelboats	Page 13
Evening Points Early	Series – 8 races	May – June, Mondays, Wednesdays, Thursdays and Fridays	Keelboats	Page 13
Saturday Series Early	Series – 6 races	May – June, Saturdays	Keelboats	Page 14
Cruises in company	Cruising – 6 events	May – September	Keelboats	Page 21
Joint Friday White Sail with FCYC	Mix of Stern Chase and Conventional courses – 7 races	May – August	Keelboats	Page 13
Inchkeith Trophy	JPR 1 with FCYC	Sun 3 rd June	Keelboats	Page 15
Coronation Cup	Stern chase	Sat 16 th June	Keelboats	Page 15
Dinghy Races	Series – 4 days	June, July, August & October	Dinghies	Page 16
Evening Points Mid	Series – 6 races	June – July, Wednesdays & Thursdays	Keelboats	Page 13
Neilson Plate	Average lap	Sat 30 th June	Keelboats	Page 16
Summer Cruise in Company Start	Cruise	Sat 30 th – Sun 31 st June	Keelboats	TBA
West Cup & Wilson Cup	JPR 2 with FCYC	Sat 7 th July	Keelboats	Page 16

Event	Type	Dates/Schedule	Class	SIs
Saturday Series Mid	Series – 6 races	July – August, Saturdays	Keelboats	Page 14
Crombie Cup	Special Course	Sat 28 th July	Keelboats	Page 17
Marsh and Surrey Cup	JPR 3 with FCYC	Sun 29 th July	Keelboats	Page 17
Evening Points Late	Series – 7 races	August, Tuesdays, Wednesdays & Thursdays	Keelboats	Page 13
Crawford Cup	JPR 4 with FCYC	Sun August 5 th	Keelboats	Page 18
Saturday Series Late	Series – 7 races	August & September, Saturdays	Keelboats	Page 14
Practice Races	-	Sat 1 st September	Keelboats	TBA
Single Handed Race	Solo helm, no crew	Sat 8 th September	Keelboats	Page 18
Crew Race	Regular crew to helm	Sun 9 th September	Keelboats	Page 19
Jubilee Cup	JPR 5 with FCYC	Sun 16 th September	Keelboats	Page 19
Pennel Trophy	Stern chase	Sat 22 nd September	Keelboats	Page 19
Royal Eastern Regatta	Club regatta – 3 races	Sat 29 th September	Keelboats	Page 20
Autumn Series	Series – 8 races	Saturdays in October	Keelboats	Page 20

Open Events, Cruises in Company, Dinghy Series – separate race notices and instructions will be issued. See Notice Board and RFYC web site for details.

Evening Points Series & Saturday Series are open to FCYC members.

RFYC Sailing Events 2018

Some RFYC events are not included – for full calendar see RFYC website.

Date	Boatman		HW Time	Events	Start	Other Events
	Start	End				
Apr 17 Tue	12:30	19:30	16:37	Cadet training registration	19:00	
Apr 23 Mon	18:00	20:30	22:00	Practice Points	18:30	
Apr 24 Tue	9:00	14:30	10:20	Cadet training on shore	19:00	
Apr 28 Sat	10:30	18:00	14:35	Opening Regatta	14:00	
Apr 30 Sat	12:00	19:00	15:57	Lift In		
May 01 Tue	12:30	19:30	16:30	Cadet training on shore	19:00	
May 03 Thu	13:30	21:00	17:37	Evening Points Early 1/8	19:00	
May 06 Sun	9:00	11:00	07:02	Cruise in company	10:00	PEYC Bosun's Locker (FIG Div 1&2)
May 07 Mon	16:30	21:00	20:35	Evening Points Early 2/8	19:00	
May 08 Tue	17:30	21:00	21:45	Cadet training on the water	18:30	
May 09 Wed	18:30	21:15	23:05	Evening Points Early 3/8	19:30	
May 12 Sat	9:00	16:30	13:10			Kip Regatta
May 13 Sun	10:00	17:30	14:00	Push the boat out		Kip Regatta
May 15 Tue	11:30	18:30	15:32	Cadet training on shore	19:00	
May 18 Fri	14:00	21:00	17:47	Evening Pts Early 4/8; Joint Fri White Sail 1	19:00	
May 19 Sat	14:30	21:00	18:35	Saturday Series Early 1,2	16:00	FYCA Chairmans cruise in company
May 20 Sun	15:30	21:00	19:30			FYCA Chairmans cruise in company
May 21 Mon	16:30	21:00	20:32	Evening Points Early 5/8	19:00	
May 22 Tue	17:30	21:00	21:45	Cadet training on the water	18:30	
May 26 Sat	9:00	17:00	13:17	Saturday Series Early 3,4	11:00	Scottish Series starts
May 27 Sun	10:00	17:30	14:07			FCC Fife Regatta (FIG Div 2)
May 29 Tue	11:30	19:00	15:27	Cadet training on shore	19:00	
Jun 01 Fri	13:30	20:30	17:17	Evening Pts Early 6/8; Joint Fri White Sail 2	18:30	
Jun 02 Sat	14:00	21:00	17:52	150th Anniversary Parade of Sail		ASC Anstruther Muster
Jun 03 Sun	14:30	21:00	18:32	JPR Inchkeith Trophy (FCYC)	15:30	
Jun 05 Tue	16:00	21:00	20:05	Cadet training on the water	18:30	
Jun 06 Wed	17:00	21:00	21:00	Evening Points Early 7/8	19:00	
Jun 07 Thu	18:00	21:00	22:05	Evening Points Early 8/8	19:00	Open Sailing 1800
Jun 09 Sat	9:00	15:00	11:22	Saturday Series Early 5,6	11:00	
Jun 10 Sun	9:00	16:00	12:25	Cruise in Company	10:00	
Jun 12 Tue	10:00	17:30	14:20	Cadet training on shore	19:00	
Jun 16 Sat	14:00	21:00	17:42	Coronation Cup	16:00	
Jun 17 Sun	14:30	21:00	18:30	Dinghy Racing	16:00	DBSC Four Inches (FIG Div 1&2)
Jun 19 Tue	16:30	21:00	20:20	Cadet training on the water	18:30	
Jun 20 Wed	17:30	21:00	21:22	Evening Points Mid 1/6	19:00	
Jun 21 Thu	18:30	21:00	22:30	Evening Points Mid 2/6	19:00	Open sailing 1800
Jun 22 Fri	9:00	14:30	10:40	RFYC 150th / Edinburgh Regatta		Feeder Race to Granton
Jun 22 Fri	9:00	14:30	10:40	Friday White Sail 3/7	19:00	
Jun 23 Sat	9:00	15:30	11:45	RFYC 150th / Edinburgh Regatta		
Jun 24 Sun	9:00	16:30	12:45	RFYC 150th / Edinburgh Regatta		
Jun 26 Tue	10:30	18:00	14:25	Cadet training on shore	19:00	
Jun 30 Sat	13:00	20:30	17:00	Neilson Plate / Summer Cruise in Cmpy start	14:30	Run/Race/Row
Jul 01 Sun	13:30	21:00	17:35	Summer Cruise in Company start		
Jul 04 Wed	15:30	21:00	19:32	Evening Points Mid 3/6	19:00	
Jul 05 Thu	16:30	21:00	20:20	Evening Points Mid 4/6	19:00	Open sailing 1800
Jul 06 Fri	17:30	21:00	21:15	Friday White Sail 4/7	19:00	
Jul 07 Sat	9:00	13:30	09:27	JPR West and Wilson Cup (RFYC)	14:00	
Jul 14 Sat	12:30	20:00	16:42			Aberdour Regatta (FIG Div 2)
Jul 15 Sun	13:30	20:30	17:30	Cruise in Company	14:00	
Jul 18 Wed	16:00	21:00	19:52	Evening Points Mid 5/6	19:00	
Jul 19 Thu	17:00	21:00	20:45	Evening Points Mid 6/6	19:00	Open Sailing 1800
Jul 20 Fri	17:30	21:00	21:42	Friday White Sail 5/7	19:00	
Jul 21 Sat	9:00	14:00	10:00	Saturday Series Mid 1,2	10:30	

Date	Boatman		HW Time	Events	Start	Other Events
	Start	End				
Jul 22 Sun	9:00	15:00	11:05	Dinghy Racing	11:00	BSC Mazzoni & Costello (FIG Div1&2)
Jul 28 Sat	12:00	19:30	16:05	Crombie Cup	14:00	West Highland Week starts
Jul 29 Sun	13:00	20:00	16:42	JPR Marsh and Surry (FCYC)	14:30	
Aug 01 Wed	14:30	21:00	18:25	Evening Points Late 1/7	19:00	
Aug 02 Thu	15:00	21:00	19:00	Evening Points Late 2/7	19:00	Open Sailing 1800
Aug 03 Fri	16:00	21:00	19:42	Friday White Sail 6/7	19:00	
Aug 04 Sat	9:00	11:30	07:52	Saturday Series Mid 3,4	12:00	
Aug 05 Sun	9:00	13:00	21:35	JPR Crawford Cup (RFYC)	13:30	
Aug 07 Tue	9:00	15:00	11:17	Cadet training on shore	19:00	
Aug 11 Sat	11:30	18:30	15:40	Saturday Series Mid 5,6	14:00	
Aug 12 Sun	12:30	19:30	16:27	Cruise in company	13:00	Burntisland SC Regatta (FIG Div 2)
Aug 14 Tue	14:00	21:00	18:00	Festival Series/Evening Points Late 3	19:00	
Aug 15 Wed	15:00	21:00	18:40	Festival Series/Evening Points Late 4	19:00	
Aug 16 Thu	15:30	21:00	19:20	Festival Series/Evening Points Late 5	19:00	Open Sailing 1800
Aug 17 Fri	16:00	20:30	20:02	Friday White Sail 7/7	19:00	
Aug 18 Sat	9:00	12:00	08:17	RFYC One Design Regatta		
Aug 19 Sun	9:00	13:30	09:15	RFYC One Design Regatta		
Aug 20 Mon	9:00	15:00	10:25	RFYC One Design Regatta		
Aug 21 Tue	9:00	16:00	11:42	Cadet training on shore	19:00	
Aug 23 Thu	9:30	17:30	13:45			FCYC Bell Rock Race start
Aug 25 Sat	11:00	18:30	15:10	Saturday Series Late 1,2	14:00	
Aug 26 Sun	12:00	19:00	15:47	Dinghy Racing	14:00	
Aug 28 Tue	13:00	20:00	16:52	Cadet Training on the water	18:30	
Aug 29 Wed	13:30	20:30	17:25	Evening Points Late 6/7	18:30	
Aug 30 Thu	14:00	20:30	17:57	Evening Points Late 7/7	18:30	
Sep 01 Sat	15:30	20:00	19:12	Practice races	16:30	
Sep 02 Sun	9:00	11:00	07:25	Cruise in company	10:00	PEYC Queen Margaret (FIG Div 1&2)
Sep 04 Tue	18:00	20:00	22:17	Cadet training on the water	18:30	
Sep 08 Sat	10:30	18:00	14:35	Single handed	14:00	FYC Regatta
Sep 09 Sun	11:30	18:30	15:25	Crew Race	14:00	FYC Regatta
Sep 11 Tue	13:00	19:30	16:55	Cadet training on the water	18:00	
Sep 15 Sat	15:30	19:30	19:20	Saturday Series Late 3,4	16:30	
Sep 16 Sun	9:00	11:30	07:37	JPR Jubilee Cup (FCYC)	11:30	
Sep 18 Tue	17:00	19:30	22:17	Cadet training on the water	18:00	
Sep 22 Sat	10:00	17:30	14:05	Pennel Trophy	14:00	PEYC Yacht & DBSC Dinghy Regattas
Sep 23 Sun	11:00	18:00	14:45	Cruise in company	11:00	PEYC Yacht & DBSC Dinghy Regattas
Sep 29 Sat	14:00	19:00	18:07	Royal Eastern Regatta/Sat Series Late 5,6,7	15:30	
Oct 06 Sat	9:30	17:00	13:25	Autumn Series 1,2	11:00	
Oct 07 Sun	10:30	17:30	14:20	Dinghy Racing	14:00	
Oct 13 Sat	14:00	18:30	18:05	Autumn Series 3,4	15:30	
Oct 20 Sat	9:00	17:00	12:47	Autumn Series 5,6	11:00	
Oct 22 Mon	10:00	17:30	14:12	Lift Out		
Oct 27 Sat	13:30	17:30	17:12	Autumn Series 7,8	15:00	

SAILING INSTRUCTIONS - RACING

RFYC Sailing Instructions – Club Races 2018

Issued by the RFYC Sailing Committee in April 2018 & replacing all previous versions.

1. Rules

Racing will be sailed under the current Racing Rules of Sailing (RRS) 2017-2020, the prescriptions of the RYA and Class Rules, except as amended by these Sailing Instructions.

2. Eligibility and Entry

Unless otherwise stated boats must be helmed by members of the Royal Forth Yacht Club, (or Forth Corinthian Yacht Club in the case of FCYC boats entering Evening Points / Saturday Series / Joint Passage Races). *Guests may crew but skippers and owners are reminded that frequent use of the guest facility for the same individual is an abuse of the system.*

3. Responsibility and Insurance

The safety of a boat and its entire management, including insurance, shall be the inescapable responsibility of the owner/skipper. RFYC shall not be liable for any loss, damage, death or personal injury, howsoever caused, to the owner, his/her skipper, crew or his/her boat as a result of their taking part in any race. Every owner warrants the suitability of his/her boat for racing. Boats shall carry insurance protection for third party and passenger liabilities of not less than £3,000,000.

4. Notices to Competitors

Notices to competitors will be posted on the official notice board located within the entrance of RFYC.

5. Changes to Sailing Instructions

Any changes to the Sailing Instructions will be posted at least 1 hour before the advertised start time of the day's racing, except that any changes to the schedule of races will be posted by 2000 hours on the day before it will take effect.

6. Signals made ashore

- 6.1. Signals made ashore will be displayed at the main mast of RFYC.
- 6.2. When flag AP is displayed ashore, '1 minute' is replaced with 'not less than 30 minutes' in the explanation of race signal AP.
- 6.3. Competitors are reminded that when flag 'Y' is displayed ashore, RRS 40 applies and personal flotation devices must be worn at all times while afloat.

7. Schedule of Races

- 7.1 Dates and start times of races: refer to Race Calendar and Race Instructions. (NB. the warning signal is 5 minutes before the first advertised start time).
- 7.2 When there has been a long postponement or when more than one race (or sequence of races for two or more classes) will be held on the same day, the warning signal for the first race and each succeeding race will be made as soon as practicable. To alert boats that a race or sequence of races will begin soon, an orange flag may be displayed (with one sound) for at least four minutes before the warning signal is displayed. Boats should note however that the normal procedure is to start the next race as soon as practicable after the end of the previous without displaying the orange flag.

8 Fleet Flags & Fleets

8.1 Fleet flags will normally be as follows:

<u>Fleet</u>	<u>Flag</u>
All-Fleet Handicap (Combined start Keelboats)	Numeral Pennant 9
Keelboat Fleet 1 (Handicap 1010 and below)	Numeral Pennant 1
Keelboat Fleet 2 (Handicap between 1011 and 1080)	Numeral Pennant 3
Keelboat Fleet 3 (Handicap 1081 and above)	Numeral Pennant 5
General Dinghy Handicap	Numeral Pennant 4

8.2 Where the Race Officer decides to start multiple fleets together, this will be indicated by all of the relevant pennants being hoisted simultaneously at the warning signal.

9 Handicaps

9.1 *Yachts and Keelboats*: The Forth Yacht Clubs Association lists of 'base' and 'progressive' handicaps for individual boats will be used. The 'base' handicap defines the boat's starting fleet.

9.2 *Opening Regatta, Royal Eastern Regatta, Evening Points, Autumn and Saturday Series races*:

Fleet 1 boats (1010 and below) will use 'base' handicaps,

Fleet 2 (handicap 1011 to 1080) and Fleet 3 boats (1081 and above) will use 'progressive' handicaps.

9.3 *Cup races with combined starts, stern chases, Friday white sail and all Joint Passage Series races* will use 'progressive' handicaps. Two sets of results will be calculated for the Festival Series and Royal Eastern Regatta as these races also count towards the Evening Points Late and Saturday Series Late respectively.

9.4 *"White Sail" allowance*

9.4.1 Upon request to the Race Officer a 'White Sail' allowance of 4% may be added to the boat's handicap (provided that the lack of a downwind sail is not already allowed for within the boat's current handicap). This provision is intended to encourage yachts to race that are short handed, or which have an inexperienced crew, and which would not otherwise take part in the race. The reason why a White Sail Allowance is being requested must be specified at the time the request is made.

9.4.2 To request the White Sail Allowance a yacht's skipper must contact the Race Officer, either verbally or via VHF Channel M1/37, at least 5 minutes before the first fleet Warning Signal is displayed. If more than one race is scheduled the allowance must be requested before the first Fleet Warning Signal for the first scheduled race. If granted the White Sail Allowance will apply to all races scheduled that day. If a boat requesting a White Sail Allowance subsequently breaks Instruction 9.4.4 the White Sail Allowance will be removed for all races sailed that day.

9.4.3 It is at the discretion of the Race Officer whether to accept a White Sail Allowance request on a particular day.

9.4.4 White sail yachts are not permitted to fly spinnakers, cruising chutes or twin headsails/more headsails than are used upwind on the race day, but may pole out headsails.

9.4.5 A yacht permitted to use the White Sail Allowance shall display a white pennant/flag on the backstay or other prominent position, from its before its fleet warning signal until it finishes.

9.4.6 The White Sail Allowance shall not be granted if due to the course or weather conditions no yachts are able to fly spinnakers.

9.4.7 On application to the Sailing Committee a White Sail Allowance can be applied to a boat's handicap at the start of the season. Where a season's White Sail Allowance is applied to a boat's handicap, Instruction 9.4.4 shall also apply, but Instructions 9.4.1, 9.4.2, 9.4.3, 9.4.5 and 9.4.6 shall not apply.

9.5 *Season Challenge*: All boats will use 'Progressive' handicaps. Fleet 1 boats (handicap 1010 and below) cannot apply for a White Sail Allowance. A White Sail Allowance may be granted

to boats in Fleet 2 (handicap between 1011 and 1080) and Fleet 3 (handicap 1081 and above). Additionally boats in Fleet 3 will also be granted an additional 4% allowance (in addition to a White Sail Allowance, if relevant). See 'Season Challenge' under Cruising Events for more information.

- 9.6 *Dinghies*: Will use handicaps as published in the current YR2, RYA Portsmouth Yardstick Scheme.
- 9.7 Any boat that does not have a current FYCA or Portsmouth Handicap will be allocated a temporary handicap by the Sailing Committee.
- 9.8 The Sailing Committee reserves the right to adjust any handicap at any time.

10 Racing Marks & Courses

Marks and courses to be used are defined in the List of Courses and Marks or the individual Race Instructions. The course to be used will be displayed on the committee boat.

Members particular attention is drawn to the **RESTRICTED AREA** outside Leith Harbour: Boats must not pass between Leith Approach Buoy (LA, F.R. 3s) at 55°59.950'N 003°11.510'W and the entrance to Leith Harbour, or enter the dredged channel between the Leith Approach Buoy and the entrance to Leith Harbour.

Failure to comply with this Instruction will result in **disqualification**.

11 The Start

- 11.1 Races will be started using RRS 26 with the warning signal given 5 minutes before the starting signal.
- 11.2 Boats whose warning signal has not been made should avoid the starting area.
- 11.3 A boat starting later than 15 minutes after her starting signal will be scored Did Not Start.

12 Start Line

The start line will be between a staff displaying a yellow flag on a buoy and the start (first) mark indicated on the List of Courses.

13 Finishing Line

The finishing line will be between an orange buoy and the finish (last) mark indicated on the List of Courses (unless altered by a shortened course).

14 Time Limits

If one boat in a fleet sails the course as required by RRS 28.2 and finishes within the time limit, the time limit will be extended for all other boats in that class. This alters RRS 35. Time limits and extensions are included in the Race Instructions.

15 Protests

- 15.1 Protests shall be lodged in accordance with RRS 60 and 61. They shall be in writing (forms available from RFYC office) and be received within 1 hour of the last boat finishing the last race of the day.
- 15.2 A breach of Instruction 11.2 will not be grounds for a protest by a boat. This changes RRS 60.1 (a). Boats breaking Instruction 11.2 may be protested by the Race Committee. Penalties for breaches of this Instruction may be less than disqualification if the protest committee so decides.

16. Safety (see also Instruction 3 & 6.3)

- 16.1. Unless otherwise defined in the Race Instructions, boats (keelboats) shall comply with the FYCA Safety Regulations, Category 4R (Issue 3). Full copies of these regulations are available from the club website or online at www.fyca.org.uk. A copy will also be displayed on

the notice board. NB: in certain races boats shall comply with Category 4 (see Race Instructions).

- 16.2 Drivers of the Royal Forth Committee boat are reminded that the VHF transceiver must be switched on and monitored whilst outside the harbour. Operating channels are included in the Race Management Instructions on board Royal Forth.
- 16.3 Boats that retire from a race shall inform the race committee as soon as possible.
- 16.4 Single Handed Race: A Personal Flotation Device must be worn at all times. This changes RRS 40.
- 16.5 Dinghies: While racing dinghy helms and crews must wear Personal Flotation Devices at all times. This changes RRS 40.

17. Risk Statement

Competitors are reminded of RRS Rule 4 which states:

'The responsibility for a boat's decision to participate in a race or to continue racing is hers alone.'

Sailing is by its nature an unpredictable sport and therefore involves an element of risk. By taking part in the event, each competitor agrees and acknowledges that:

- a) They are aware of the inherent element of risk involved in the sport and accept responsibility for the exposure of themselves, their crew and their boat to such inherent risk whilst taking part in the event;
- b) They are responsible for the safety of themselves, their crew, their boat and their other property whether afloat or ashore;
- c) They accept responsibility for any injury, damage or loss to the extent caused by their own actions or omissions;
- d) Their boat is in good order, equipped to sail in the event and they are fit to participate;
- e) The provision of a race management team, patrol boats, umpires and other officials and volunteers by the organiser does not relieve them of their own responsibilities;
- f) The provision of patrol boat cover is limited to such assistance, particularly in extreme weather conditions, as can be practically provided in the circumstances;
- g) Their boat is adequately insured, with cover of at least £3 million against third party claims.

18. Equipment & Measurement Checks

A boat or its equipment may be inspected at any time for compliance with class rules and the sailing instructions.

19. Interpretation

Should there be any discrepancy between these instructions and the individual race instructions, the latter will take precedence.

20. Penalty System

RRS 44.1 and 44.2 are changed so that only one turn, including one tack and one gybe, is required.

Evening Points, Saturday & Autumn Series and Joint Passage Races

21. Eligibility and Entry

These series are open to all club members' boats from either the Royal Forth Yacht Club or Forth Corinthian Yacht Club, helmed by a club member. There is no requirement to register for either series and there are no entry fees.

22. Schedule of races and Courses

22.1. The dates of the races are listed in each club's Race Programme.

22.2. The scheduled time of the start signal for each race is listed in the Sailing / Race Instructions.

22.3. For Evening, Autumn and Saturday Points races, RFYC courses will be used.

23. Scoring

23.1 Three races must be completed to constitute a series.

23.2 Series results will be calculated as follows:

Evening, Autumn and Saturday Points Series

<i>Races Completed</i>	<i>Discards</i>	<i>Races Completed</i>	<i>Discards</i>
3	0	9 to 12	3
4 or 5	1	13 to 16	4
6 or 8	2		

23.3 Average points for the series may be awarded to the members of the race committee on duty. An application should be made in writing/email to the Sailing Secretary.

23.4 Each of the Early/Mid/Late parts of the Evening Points and Saturday Points is a series in its own right. Additionally, results will be calculated for the combined full season of Evening, Saturday and Autumn points for each One Design class with at least 4 boats racing during the season – for these combined season results boats will be allowed 12 discards over the season.

24. Prizes

Prizes for each series will be as follows:

<i>Number of Entrants</i>	<i>Prizes</i>
2	1
3 - 4	2
5 or more	3

RACE INSTRUCTIONS

Unless stated otherwise the RFYC Sailing Instructions apply (see pages 8 to 12).

Opening Regatta

Saturday 28 April

14:00 – 3 Races

HW 14:35

- Entries: Keelboats (Fleets 1, 2 and 3).
Start Time: Races 2 & 3 will start as soon as possible after the preceding race.
Course: Breakwater or Mid-Firth Courses.
Time Limit: 60 minutes from actual start of race, with a 15 minute extension.

Evening Points Early / Mid / Late Series

- Entries: Keelboats (Fleets 1, 2 and 3).
Start Time: See RFYC Sailing Calendar.
There will be one race per day.
Course: Breakwater.
Time Limit: 75 minutes from actual start of race, with a 15 minute extension.

Joint Friday White Sail Series

- Courses will be a mix of Stern Chase (SC) and Conventional (C).
- Eligibility and Entry: The series is open to all club member boats using restricted (white) sails only. A boat may not use a spinnaker, cruising chute or fly more than one headsail although she may pole out her headsail. Instruction 9.4.4 applies.
- Schedule of Races: Dates of races are listed in the RFYC Sailing Calendar and are also available on the RFYC website.
The scheduled time of the warning signal for the first start of each race is no earlier than 18:00. For Stern Chase races (SC), see separate instruction for working out your own start time.
- Course: For Joint Friday White Sail Race 1 and 2 the course will be an RFYC Breakwater course. The course will be displayed on the RFYC Committee boat.
For Joint Friday White Sail Races 3 – 7 the course will be selected and displayed by the Race Officer from FCYC Standard Courses. The course number may be indicated by flying the corresponding number pennant.
The FCYC courses are shown in the COURSES section of these Sailing Instructions.
- Start: The race for conventional starts (C) will be started using RRS 26, with the warning signal given 5 minutes before the starting signal.
Boats taking part in Joint Friday White Sail races 1 or 2, that are not otherwise taking part in the Evening Points Early series should start with Fleet 3 (irrespective of handicap). All other conventional start (C) Joint Friday White Sail races will be started in a combined start by the FCYC Committee Boat.
The Class Flag will be Flag Q.
Stern Chase (SC) races will have a staggered starts based on boat handicap. The first boat to start will receive a standard starting sequence. Second and subsequent starts will be signalled by the dipping of flag 'P'. Each boat's start time can be calculated as follows:
e.g. a yacht has a handicap of 1038. For a race lasting 1 hour finishing at

20:00hrs her start time is calculated as follows:

$[20:00\text{hrs} - (20:00\text{hrs} - 1038/20)] = [20:00\text{hrs} - (51.9) 52\text{mins}]$

= Start Time of 19:08hrs.

A list of club yacht start times will be found on FCYC club noticeboard.

The starting line for Joint Friday White Sail Race 1 and 2 will be determined by the Breakwater course number displayed on the Committee boat.

For subsequent Joint Friday White Sail Races (both Conventional and Stern Chase) the start will be between the mast of a Committee Boat displaying an orange flag and FCYC mark Q.

A boat starting later than 30 minutes after the starting signal will be scored Did Not Start. This changes Instruction 11.3.

Finish and
Time Limit:

For Joint Friday White Sail Race 1 and 2 the finishing line will be between an orange spherical buoy and a RFYC Race Mark determined by the course set. If the race is shortened, the finish line will be between a mark of the course and the mast of the committee boat displaying flags S and Q. If an orange spherical buoy is also in the water near the committee boat then this replaces the mast of the committee boat as the end of the finishing line.

For subsequent Joint Friday White Sail Races the finish time will be announced by the OOD by the hoisting of the S flag accompanied by a sound signal. The finishing line will be between the mast of the committee boat and the next mark of the course after the finish time.

If the committee boat is missing it will be the rounding of this final mark that determines the finishing order.

Finish time will be 1 hour after first start time or as extended by the OOD following a postponement.

In all races each yacht's start and finishing time must be recorded by the Race Officer and the resulting data sent to the FCYC Sailing Secretary (mail to: kennyallan@aol.com)

Scoring

3 races are required to be completed to constitute a series.

RFYC Instruction 23 does not apply to the Friday White Sail series.

When fewer than 5 races have been completed, a boat's series score will be the total of race scores.

When 5 or more races have been completed, a boat's series score will be the total of her 4 best results.

The Race Officer may be awarded their yacht's average place points for the series for the race in which they officiate.

Saturday Points Early / Mid / Late Series

Entries: Keelboats (Fleets 1, 2 and 3).

Start Time: See RFYC Sailing Calendar.

There will be 2 races per day, except in the Royal Eastern Regatta when there will be 3 races.

Course: Race Officer choice of Breakwater or Mid-Firth courses.

Time Limit: 90 minutes from actual start of race, with a 30 minute extension.

Joint Passage Race 1 – Inchkeith Trophy

Saturday 3 June

Start 15:30

HW 18:32

- Entries: Keelboats of RFYC and FCYC. Combined start for all yachts (Flag Q).
- Starting Line: The starting line will be between the mast of the FCYC Committee boat displaying an Orange Flag and RFYC Race Mark H.
- Course: Start (H) – Ia – HW – IK – WG – Finish (H)
CAPITAL LETTERS to **PORT** – small letters to **starboard**.
- Finishing Line: The finishing line will be between the Committee boat on station and Mark H. If no Committee boat is on station then the finishing line will be between RFYC Race Mark H and the black and white marks on the corner of of the disused race box on the NE corner of the East Breakwater.
Skippers of finishing yachts should record their own starting and finishing time by their own watch, along with the name of the yacht finishing ahead and behind them – this should be handed to the Race Officer, or if the Race Officer is not present it should be emailed to the RFYC Sailing Secretary within 24 hours of finishing (mail to: cathy.ogden75@gmail.com).
- Time Limit: The absolute time limit is 20:30 BST.

Coronation Cup (Stern Chase)

Saturday 16 June

Start 16:00

HW 17:42

- Entries: Keelboats.
Skippers of boats wishing to enter must add their boat name to the entry list at the Notice Board at least two hours before the advertised start time.
- Starting Line: The starting line will be between a staff displaying a yellow flag on a buoy and the first mark of the course, as displayed on the Notice Board.
- Starting Procedure: The first start will follow the starting procedure in accordance with RRS 26. The warning signal will be Numeral Pennant 9.
Subsequent starts will be signalled by displaying flag “P” (with no sound signal) one minute before the starting signal. At the starting signal, flag “P” will be removed with one sound (or dipped if the next start is one minute later).
At the starting signal of the last boat in the sequence, Flag “P” will be removed with one sound signal.
Start times for individual entries will be displayed on the Notice Board not less than one hour before the first start.
- Course: The course to be sailed will be displayed on the Notice Board not less than one hour before the first start.
- Finishing Line: The finishing line will be between a staff displaying a blue flag at the north end of the Pharos Pier and a purpose laid mark (a description of this mark will be displayed on the Notice Board prior to the start of the race).
- Time Limit: 120 minutes from actual start of race with a 30 minute extension.

Dinghy Series

Entries: Dinghies
Start Time, Course and Time Limit: Sailing Instructions will be notified in advance via the RFYC website.

RFYC 150th Anniversary Regatta / Edinburgh Regatta

Saturday 22 & Sunday 23 June

Entries: Keelboats.
Start Time, Course and Time Limit: Sailing Instructions will be notified in advance and displayed via the RFYC website.

Neilson Plate / Early Saturday Series 6

Saturday 30 June

Start 14:30

HW 17:00

Entries: Keelboats. Numeral Pennant 9 is the Class flag for all yachts.
Starting Line & Finishing Line: The starting line will be between a staff displaying a yellow flag on a buoy and Mark I. All boats **must** pass through this line on the completion of each round.
Course: Mid-Firth Courses: B – Average Lap
Finishing Procedure: **Average Lap Time:** When flag “S” is displayed from the Committee Boat, each boat will complete the lap and finish at the end of that lap.
The results will be calculated by dividing the corrected time by the number of laps completed by the boat.
Time Limit: 120 minutes from actual start of race with a 30 minute extension.

Joint Passage Race 2 – RFYC West Cup (FCYC Wilson Cup)

Saturday 7 July

Start 14:00

HW 09:27

Entries and Start Line: Keelboats of RFYC and FCYC. Combined start for all yachts (Numeral Pennant 9).
The starting line will be between the mast of the FCYC Committee Boat displaying an Orange Flag & RFYC Mark H.
Course: Start (H) – c7 – ik – nc – LA – z – h – c12 – p – LA – z – Finish (h)
CAPITAL LETTERS to **PORT** – small letters to **starboard**.
Finishing Line: The finishing line will be between the Committee boat on station and Mark H. If no Committee boat is on station then the finishing line will be between RFYC Race Mark H and the black and white marks on the corner of of the disused race box on the NE corner of the East Breakwater.
Skippers of finishing yachts should record their own starting and finishing time by their own watch, along with the name of the yacht finishing ahead and behind them – this should be handed to the Race Officer, or if the Race Officer is not present it should be emailed to the RFYC Sailing Secretary within 24 hours of finishing (mail to: cathy.ogden75@gmail.com).
Time Limit: The absolute time limit is 20:30 hours. If no boat finishes within this time limit the Race Officer may declare a result using times taken at a mark of the course.

Boats should record their own time of passing any mark of the course. For the avoidance of doubt, the time should be taken when the bow crosses an imaginary line at 90° to the direct course from the previous mark, not when the mark has been rounded. At rounding marks the distance from the mark should be no greater than 100 metres when the time is taken.

If no boat finishes within the time limit the race shall be abandoned. However, a result may be obtained using times taken at a rounding mark. This alters RRS32.

The Crombie Cup

Saturday 28 July	Start 14:00	HW 16:05
Entries:	Keelboats.	
Course:	Start (c) – r – O – M – B – i – e – r – O – M – B – i – finish(e). CAPITAL LETTERS to PORT – small letters to starboard .	
Time Limit:	150 minutes from actual start of race with a 60 minute extension	

Joint Passage Race 3 – FCYC Marsh & Surrey Cup

Sunday 29 July	Start 14:30	HW 16:42
Entries and Starting Line:	Keelboats of RFYC and FCYC. Combined start for all yachts (Flag Q). The starting line will be between the mast of FCYC Committee Boat displaying an Orange Flag & RFYC Mark H.	
Course:	<p>MARSH (handicap >= 1100)</p> <p style="padding-left: 40px;">GREEN FLAG start (h) – im – ox – c12 – z – finish (h)</p> <p style="padding-left: 40px;">RED FLAG Start (H) – Z – C12 – OX – IM – Finish (H)</p> <p>SURREY (handicap < 1100)</p> <p style="padding-left: 40px;">GREEN FLAG start (h) – im – ox – p – s – finish (h)</p> <p style="padding-left: 40px;">RED FLAG Start (H) – S – P – OX – IM – Finish (H)</p> <p>Course will be indicated by a Green or a Red flag flying from the Committee boat. CAPITAL LETTERS to PORT – small letters to starboard.</p>	
Finishing Line:	<p>The finishing line will be between the Committee boat on station and Mark H. If no Committee boat is on station then the finishing line will be between RFYC Race Mark H and the black and white marks on the corner of of the disused race box on the NE corner of the East Breakwater.</p> <p>Skipper of finishing yachts should record their own starting and finishing time by their own watch, along with the name of the yacht finishing ahead and behind them – this should be handed to the Race Officer, or if the Race Officer is not present it should be emailed to the RFYC Sailing Secretary within 24 hours of finishing (mail to: cathy.ogden75@gmail.com).</p>	
Time Limit:	<p>The absolute time limit is 19:30 BST. If no boat finishes within this time limit the Race Officer may declare a result using times taken at a mark of the course.</p> <p>Boats should record their own time of passing any mark of the course. For the avoidance of doubt, the time should be taken when the bow crosses an imaginary line at 90° to the direct course from the previous mark, not when the mark has been rounded.</p> <p>If no boat finishes within the time limit the race shall be abandoned. However, a result may be obtained using times taken at a rounding mark. This alters RRS32.</p>	

Joint Passage Race 4 Crawford Cup (FCYC Scott Shield)

Sunday 5 August

Start 13:30

HW 21:35

- Entries: Keelboats of RFYC (Crawford Cup) and FCYC (Scott Shield). Combined start for all yachts (Numeral Pennant 9).
- Starting Line: The starting line will be between the mast of the FCYC Committee Boat displaying an Orange Flag & RFYC Mark H.
- Course: GREEN: start (h) – ch17 – ch12 – H – la – EG – LA – O – w – finish (h)
RED: Start (H) – W – o – eg – LA – h – CH12 – CH17 – Finish (H)
Course will be indicated by a Green or a Red flag flying from the Committee boat. CAPITAL LETTERS to **PORT** – small letters to **starboard**.
- Finishing Line: The finishing line will be between the Committee boat on station and Mark H. If no Committee boat is on station then the finishing line will be between RFYC Race Mark H and the black and white marks on the corner of of the disused race box on the NE corner of the East Breakwater.
Skippers of finishing yachts should record their own starting and finishing time by their own watch, along with the name of the yacht finishing ahead and behind them – this should be handed to the Race Officer, or if the Race Officer is not present it should be emailed to the RFYC Sailing Secretary within 24 hours of finishing (mail to: cathy.ogden75@gmail.com).
- Time Limit: The absolute time limit is 20:30 BST. If no boat finishes within this time limit the Race Officer may declare a result using times taken at a mark of the course.
Boats should record their own time of passing any mark of the course. For the avoidance of doubt, the time should be taken when the bow crosses an imaginary line at 90° to the direct course from the previous mark, not when the mark has been rounded. At rounding marks the distance from the mark should be no greater than 100 metres when the time is taken.
If no boat finishes within the time limit the race shall be abandoned. However, a result may be obtained using times taken at a rounding mark. This alters RRS32.

Single Handed Race

Saturday 8 September

Start 14:00

HW 14:35

- Entries: Keelboats. Combined start for all yachts (Numeral Pennant 9).
Skippers of boats wishing to enter must add their boat name to the entry list at the Notice Board at least 90 minutes before the advertised start time.
- Course: Breakwater Courses.
- Time Limit: 120 minutes from actual start of race with a 30 minute extension.
- Restrictions: Use of self-steering gear operated by power or wind-vane is prohibited. Boats may be fitted with adjustable tiller lines.
- Safety: Personal Flotation Devices **shall** be worn at all times.

Crew Race

Sunday 9 September

Start 14:00

HW 15:25

- Entries: Keelboats. Combined start for all yachts (Numeral Pennant 9).
This race is to be helmed by a regular crew member who does not normally helm. The regular crew member must be on the helm at all times from before the Warning Signal is sounded until after the boat has finished the race.
- Course: Breakwater Courses.
- Time Limit: 120 minutes from actual start of race with a 30 minute extension.

Joint Passage Race 5 (Jubilee Cup)

Sunday 16 September

Start 11:30

HW 07:37

- Entries: Keelboats of RFYC and FCYC. Combined start for all yachts (Flag Q).
- Starting Line: The starting line will be between the mast of the Committee Boat displaying an Orange Flag & RFYC Mark H.
- Course: Course 1: Start(h) – ox – ch12 – H – la – WG – O – H – Z – finish(h)
Course 2: Start(H) – Z – h – o – wg – LA – h – CH12 – OX – finish (H)
The Course Board will indicate course 1 or 2.
CAPITAL LETTERS to **PORT** – small letters to **starboard**
- Finishing Line: The finishing line will be between the Committee boat on station and Mark H. If no Committee boat is on station then the finishing line will be between RFYC Race Mark H and the black and white marks on the corner of of the disused race box on the NE corner of the East Breakwater.
Skippers of finishing yachts should record their own starting and finishing time by their own watch, along with the name of the yacht finishing ahead and behind them – this should be handed to the Race Officer, or if the Race Officer is not present it should be emailed to the RFYC Sailing Secretary within 24 hours of finishing (mail to: cathy.ogden75@gmail.com).
- Time Limit: 180 minutes from actual start of race with a 60 minute extension (or an absolute limit of 19:00 if the start is delayed).
Boats should record their own time of passing any mark of the course. For the avoidance of doubt, the time should be taken when the bow crosses an imaginary line at 90° to the direct course from the previous mark, not when the mark has been rounded.
If no boat finishes within the time limit the race shall be abandoned. However, a result may be obtained using times taken at a rounding mark. This alters RRS32.

The Pennel Trophy (Stern Chase)

Saturday 22 September

Start 14:00

HW 14:05

- Entries: Keelboats.
Skippers of boats wishing to enter must add their boat name to the entry list at the Notice Board at least two hours before the advertised start time.
- Starting Line: The starting line will be between a staff displaying a yellow flag on a buoy and the first mark of the course, as displayed on the Notice Board
- Starting Procedure: The first start will follow the starting procedure in accordance with RRS 26: The warning signal will be Numeral Pennant 9.
Subsequent starts will be signalled by displaying flag “P” (with no sound signal)

one minute before the starting signal.

At the starting signal, flag "P" will be removed with one sound (or dipped if the next start is one minute later). At the starting signal of the last boat in the sequence, Flag "P" will be removed with one sound signal.

Start times for individual entries will be displayed on the Notice Board not less than one hour before the first start.

Course: The course to be sailed will be displayed on the Notice Board not less than one hour before the first start.

Finishing Line: The finish line will be between an orange buoy and the last mark of the course, as displayed on the Notice Board.

Time Limit: The absolute time limit is 180 minutes from the first start.

The Royal Eastern Regatta

Saturday 29 September

Start 12:00 (3 races)

HW 14:42

Entries: Keelboats

Course: Mid-Firth Courses or Breakwater – at discretion of Race Officer

Start Time: Races 2 & 3 will start as soon as possible after the preceding race.

Time Limit: 60 minutes from actual start of race with a 15 minute extension.

Autumn Series

Entries: Keelboats

Dates and See RFYC Sailing Calendar.

Start Time: There will be 2 races per day. Race 2 will start as soon as possible after the preceding race.

Course: Race Officer choice of Breakwater or Mid-Firth courses.

Time Limit: 90 minutes from actual start of race, with a 30 minute extension.

CRUISING EVENTS

Cruises in Company

The monthly Cruise in Company events are shown in the 'calendar on a page', and as is the custom details of each cruise will be announced either nearer the date or when skippers meet at the clubhouse on the day. The events are:

Date	Event	Time	HW
Sunday 6 May	Cruise In Company 1	10:00	07:02
Sunday 10 June	Cruise In Company 2	10:00	12:25
Sunday 15 July	Cruise In Company 3	14:00	17:30
Sunday 12 August	Cruise In Company 4	13:00	16:27
Sunday 2 September	Cruise In Company 5	10:00	07:25
Sunday 23 September	Cruise In Company 6	11:00	14:45

These cruises are intended to encourage club boats to venture out in company, with the prospect of anchoring or berthing in a harbour together.

Season Challenge

There will be a competition during the season for the fastest rounding of individual islands in the Forth Estuary. The islands in the Islands Challenge are:

- Inch Garvie
- Inchcolm
- Inchmickery
- Inchkeith.

There will be a separate challenge Isle of May Challenge for the rounding of the Isle of May.

Rules:

1. Skippers can make as many attempts at each island as they wish – part of the challenge is to choose the most favourable wind and tide conditions for the passage(s).
2. *Start and finish times* (not elapsed times) should be taken from Granton harbour mouth.
3. All boats will use their Progressive Handicap.

Fleet 1 boats (handicap 1010 and below) may not claim a White Sail Allowance. This changes RFYC Instruction 9.4.

Fleet 2 boats (handicap between 1011 and 1080) and Fleet 3 boats (handicap over 1080) may choose to make a White Sail passage and claim an additional 4% allowance.

Additionally Fleet 3 boats are granted a 4% allowance on their handicap. (See Season Challenge Rule 6 for how this should be applied.)

If a Fleet 2 or Fleet 3 boat chooses to make a White Sail Passage then RFYC Instructions 9.4.1, 9.4.2, 9.4.3, 9.4.5 and 9.4.6 shall not apply.

For the islands of Inch Garvie, Inchcolm, Inchmickery and Inchkeith the decision to make a normal or White Sail passage should be made *before leaving the mooring or pontoon*. The integrity of skippers is relied upon in this matter.

For the Isle of May the decision to use a spinnaker can be made at any point on the passage.

4. The passage should be recorded on the forms available at the club notice board including: island rounded, name of yacht, skipper, date, start time, finish time, weather conditions, wind direction and strength, and whether a spinnaker or cruising chute was used.
In the case of the Isle of May more detail of the passage should be recorded. In the case of a boat staying overnight on an Isle of May passage a single waypoint should be used to record the stop time on day one and the restart time on day two. The waypoint used should be recorded.
5. The record of a passage must be submitted to the Sailing Secretary within one week of the island rounding.
6. The elapsed time will be corrected for the boat's handicap (see Instruction 9.5) and White Sail Allowance (if claimed). The 4% allowance for Fleet 3 boats is applied to the progressive handicap. If a White Sail Allowance is being claimed then 8% is added to the progressive handicap before any adjusted time is calculated. For example:
 - A Fleet 1 handicap boat may use a spinnaker, but no WSA is allowed if it does not.
 - A Fleet 2 handicap boat with a *progressive* handicap of 1015 that claims a White Sail allowance adds 4% to its handicap before calculating its adjusted time. i.e. a handicap of 1056 is used.
 - A Fleet 3 handicap boat with a *progressive* handicap of 1090 that does NOT claim a White Sail Allowance adds 4% to its handicap before calculating its adjusted time. i.e. a handicap of 1134 is used.
 - A Fleet 3 handicap boat with a *progressive* handicap of 1090 that claims a White Sail Allowance adds 8% to its handicap before calculating its adjusted time. i.e. a handicap of 1177 is used.
7. A skipper whose boat does not appear on the club handicap list should apply to the Sailing Secretary for a handicap.
8. Passage times will be displayed in a league table format on the RFYC website.
9. If sufficient boats compete prizes may be awarded.

COURSES

Mid-Firth Courses

A courses: Set Laps (See course chart on the next page)

App. Wind Direction	Course No.	Mark1	Mark 2	Course (order in which marks are to be passed)
North	1	N	I	Start at I-N-I-N-I-N-finish at I
N. West	2	M	I	Start at I-M-I-M-I-M-finish at I
West	3	A	I	Start at I-A-I-A-I-A-finish at I
S. West	4	R	I	Start at I-R-I-R-I-R-finish at I
South	5	B	I	Start at I-B-I-B-I-B-finish at I
S. East	6	C	I	Start at I-C-I-C-I-C-finish at I
East	7	U	I	Start at I-U-I-U-I-U-finish at I
N. East	8	O	I	Start at I-O-I-O-I-O-finish at I

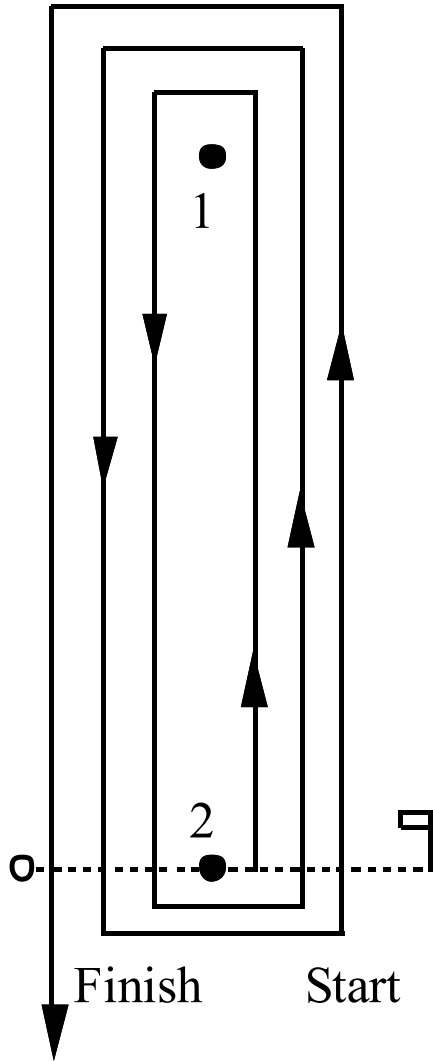
B courses: Average Lap (See course chart below)

When used for Average Lap

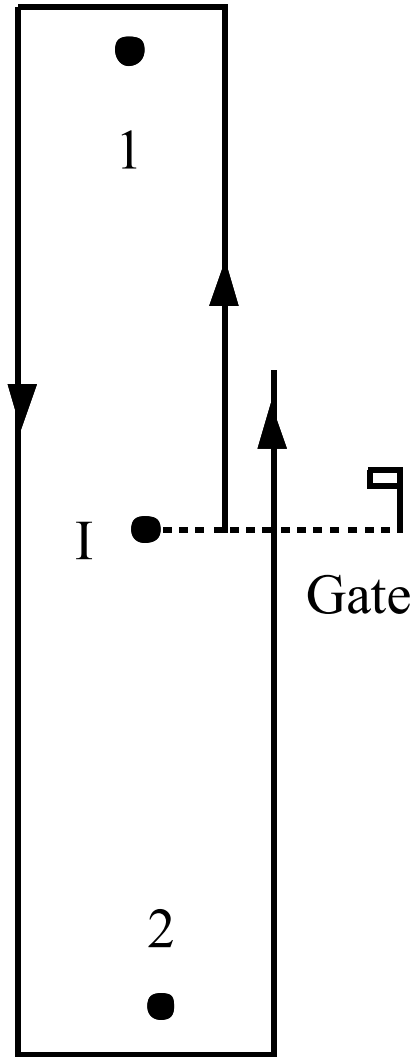
The Gate is between mark I and a staff displaying a yellow flag on a buoy. On completion of each lap, boats must pass between these marks leaving mark I to port and the staff displaying a yellow flag on a buoy to starboard. When flag 'S' is displayed from the committee boat, each boat will complete the lap and finish at the end of that lap. The results will be calculated by dividing the corrected time by the number of laps completed by the boat.

App. Wind Direction	Course No.	Mark1	Mark 2	Course (order in which marks are to be passed)
North	1	N	B	Start at I-N-B-Gate at I
N. West	2	M	C	Start at I-M-C-Gate at I
West	3	A	U	Start at I-A-U-Gate at I
S. West	4	R	O	Start at I-R-O-Gate at I
South	5	B	N	Start at I-B-N-Gate at I
S. East	6	C	M	Start at I-C-M-Gate at I
East	7	U	A	Start at I-U-A-Gate at I
N. East	8	O	R	Start at I-O-R-Gate at I

A Courses



B Courses



C courses and D courses: Set Laps

C courses and D courses are triangles. The start is between the start mark and a staff displaying a yellow flag on a buoy, which will be at the leeward side of the course. In a multiple lap race, the next mark after the Leeward mark is the Windward mark. The finish line will be between any mark of the course and the committee boat displaying flag 'S'.

CAPITAL LETTERS to **PORT**, small letters to **starboard**

Wind direction	Course letter	Course number	Start	Windward	Gybe	Leeward	Distance per lap
North	C	1	B	O	A	B	2.6
N. West	C	2	C	M	R	C	2.4
West	C	3	E	r	i	e	2.3
West	C	4	C	a	o	c	2.6
W. S. West	C	5	U	A	B	U	2.4
S. West	C	6	O	R	C	O	2.5
South	C	7	O	b	m	o	2.6
S. East	C	8	M	C	O	M	2.4
East	C	9	A	C	N	A	2.6
N. East	C	0	R	U	M	R	2.5

Wind direction	Course letter	Course number	Start	Windward	Gybe	Leeward	Distance per lap
North	D	1	B	l	A	B	1.7
N. West	D	2	C	l	R	C	1.7
West	D	3	E	b	c	e	1.3
West	D	4	C	i	u	c	1.4
W. S. West	D	5	U	l	B	U	1.7
S. West	D	6	O	l	C	O	1.8
South	D	7	O	i	m	o	1.7
S. East	D	8	M	l	O	M	1.7
East	D	9	A	l	N	A	1.7
N. East	D	0	R	l	M	R	1.7

Breakwater Courses

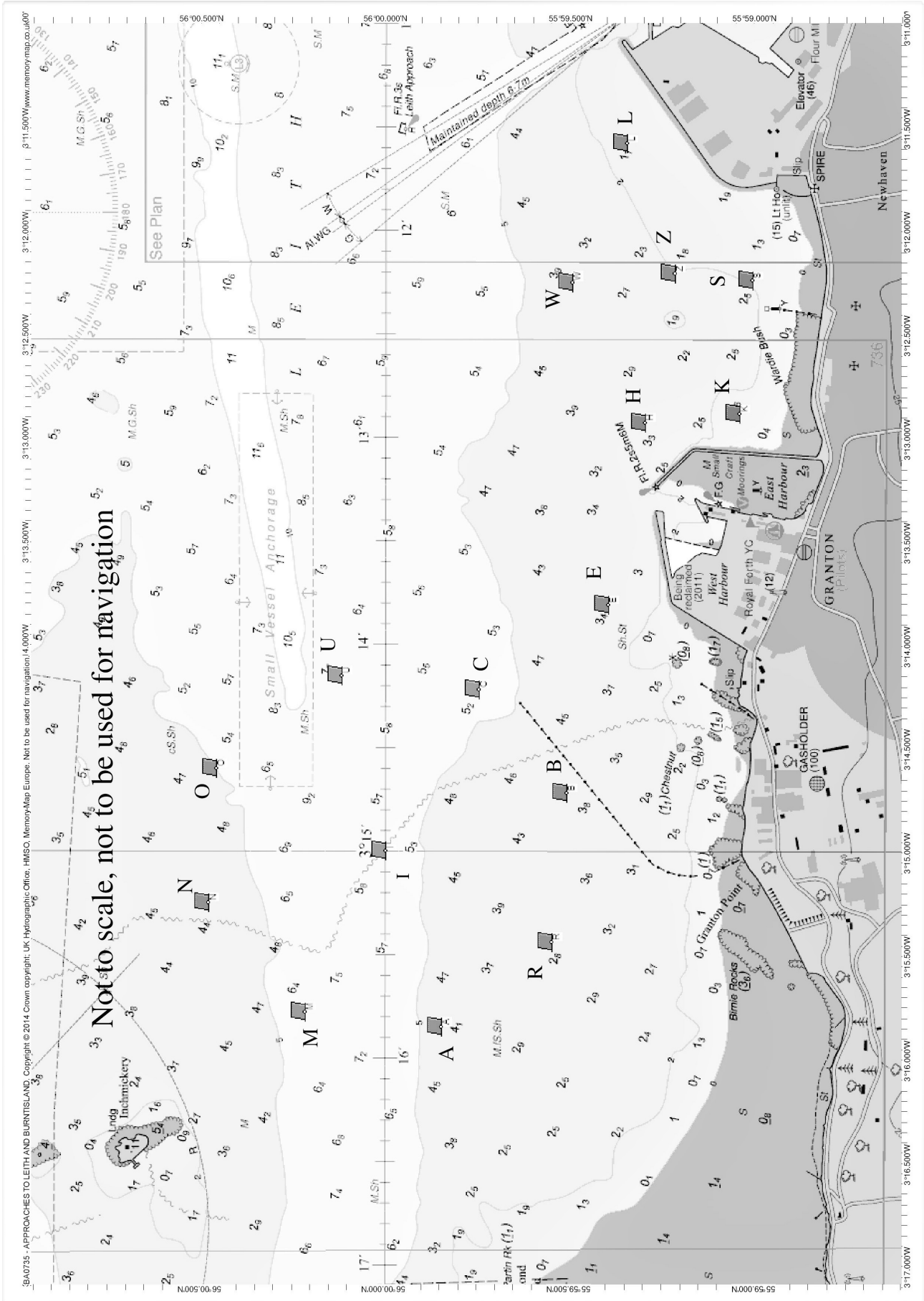
CAPITAL LETTERS to **PORT**, small letters to starboard

App Wind Direction	Number	Course	Distance
North	12	z-w-s-k-h-w-s-w-s-k-h-w (finish)	5.4
N.N.East	13	z-w-l-Z-s-k-w-h-w-s-k-w-h (finish)	4.9
N.East	14	H-w-l-s-l-z-h-w-h (finish)	3.5
N.East	15	h-w-l-s-w-l-z-h-w-z-h (finish)	4.1
East	21	H-l-K-S-H-e-W (finish)	3.8
East	23	H-L-W-H-L-H-Z-H (finish)	3.9
East	24	h-l-s-w-s-h-l-s-w-s-h (finish)	5.4
East	25	h-l-s-e-h-l-e-h-z-e-h (finish)	7.0
East	26	E-L-W-E-H-L-E-H-Z-E-H (finish)	7.3
S.East	27	H-S-W-H-S-Z-H-S-H (finish)	3.5
S.East	28	H-S-L-W-E-H-S-W-H-S-Z-H (finish)	4.9
South	31	h-K-S-W-S-W-S-W-S (finish)	3.5
South	32	Z-s-e-w-s-h-w-s-w-s (finish)	4.9
S.West	34	W-K-L-W-K-Z-W-H (finish)	3.4
S.West	35	h-e-l-s-w-l-s-z-l-s (finish)	4.2
S.West	36	W-K-l-s-W-H-l-s-W-H (finish)	5.0
S.West	37	Z-E-S-L-W-E-L-W-H-L-W-H (finish)	7.3
W.S.West	41	h-e-w-h-w-h-w-h (finish)	3.5
W.S.West	42	Z-K-L-W-H-K-L-Z (finish)	3.5
W.S.West	43	Z-K-L-W-E-z-K-L-Z (finish)	5.0
West	45	H-E-S-Z-H-Z-H-Z-H (finish)	3.6
West	46	H-S-W-S-L-H-S-W-S-L-H (finish)	5.4
N.West	47	Z-w-l-s-h-z-s-h-z-s-h (finish)	3.8
North	White 1	e-u-S-W-S-W (finish)	3.7
N.East	White 2	H-W-C-E-H-W-E-H-W-E-H (finish)	6.1
S.East	White 3	H-S-C-E-H-S-Z-E-H-Z-E-H (finish)	6.6
West	White 4	H-B-S-L-H-S-L-H-L-H (finish)	7.0
West	White 5	h-b-w-l-e-l-h-e-z-h (finish)	7.9
N.West	White 6	H-C-S-H-E-S-Z-H-S-Z-H (finish)	5.8
N.West	White 7	H-U-C-s-h-w-s-h (finish)	4.7
N.West	White 8	e-u-z-s-h-z-s-h-z-s-h (finish)	5.0

Marks

Mark	Description	Approximate Position	
A	Almond RFYC race mark	55°59.850'N	003°15.850'W
B	Birnie RFYC race mark	55°59.510'N	003°14.720'W
C	Caroline RFYC race mark	55°59.750'N	003°14.220'W
C7	Channel Buoy No.7 (Blae Rock)	56°02.800'N	003°10.970'W
C10	Channel Buoy No.10	56°02.070'N	003°13.320'W
C12	Channel Buoy No.12	56°01.783'N	003°15.109'W
C16	Channel Buoy No.16	56°00.870'N	003°19.600'W
C17	Channel Buoy No.17	56°01.222'N	003°19.823'W
E	East RFYC race mark	55°59.400'N	003°13.810'W
H	Harbour RFYC race mark	55°59.300'N	003°12.930'W
HW	Herwit Buoy	56°01.050'N	003°06.520'W
I	Inner RFYC race mark	56°00.000'N	003°15.000'W
K	Kilo RFYC race mark	55°59.045'N	003°12.883'W
IK	Inchkeith Island (Lighthouse)	56°02.010'N	003°08.170'W
IM	Inchmickery (SE end)	56°00.650'N	003°16.300'W
L	Leith RFYC race mark	55°59.350'N	003°11.580'W
LA	Leith Approach Buoy	55°59.950'N	003°11.510'W
M	Mickery RFYC race mark	56°00.220'N	003°15.780'W
N	New RFYC race mark	56°00.480'N	003°15.250'W
NC	North Craig Buoy	56°01.020'N	003°03.520'W
O	Outer RFYC race mark	56°00.460'N	003°14.600'W
OX	Oxcars (Lighthouse)	56°01.360'N	003°16.840'W
P	Pallas Buoy	56°01.500'N	003°09.300'W
Q	FCYC race mark	55°59.200'N	003°12.899'W
R	Royston RFYC race mark	55°59.550'N	003°15.440'W
S	Starbank RFYC race mark	55°59.010'N	003°12.240'W
SD	St David's Light (Fl G 5s)	56°01.370'N	003°22.290'W
U	Upper RFYC race mark	56°00.120'N	003°14.150'W
W	Wardie RFYC race mark	55°59.497'N	003°12.252'W
WG	West Gunnet Buoy	56°01.340'N	003°10.970'W
Z	Zulu RFYC race mark	55°59.220'N	003°12.240'W

Chart Of RFYC Mark Positions



Racing Marks Distance Chart

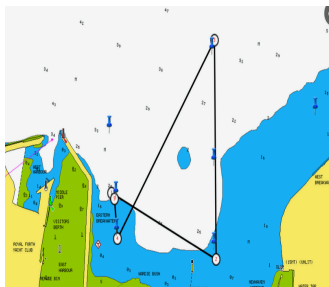
All distances are in miles and are approximate

	A	B	C	E	H	I	K	L	M	N	O	R	S	U	W	Z
A		0.72	0.92	1.23	1.73	0.50	1.85	2.44	0.37	0.71	0.93	0.38	2.19	0.99	2.05	2.12
B	0.72		0.37	0.52	1.02	0.51	1.13	1.77	0.93	1.01	0.95	0.41	1.48	0.69	1.38	1.42
C	0.92	0.37		0.42	0.85	0.50	1.03	1.53	0.99	0.93	0.74	0.71	1.33	0.37	1.13	1.23
E	1.23	0.52	0.42		0.50	0.90	0.63	1.25	1.37	1.35	1.15	0.93	0.96	0.74	0.88	0.90
H	1.73	1.02	0.85	0.50		1.35	0.26	0.76	1.84	1.76	1.49	1.43	0.48	1.07	0.43	0.39
I	0.50	0.51	0.50	0.90	1.35		1.52	2.02	0.49	0.50	0.51	0.51	1.84	0.49	1.62	1.73
K	1.85	1.13	1.03	0.63	0.26	1.52		0.79	2.00	1.95	1.71	1.52	0.36	1.29	0.57	0.40
L	2.44	1.77	1.53	1.25	0.76	2.02	0.79		2.51	2.35	2.02	2.17	0.50	1.63	0.40	0.39
M	0.37	0.93	0.99	1.37	1.84	0.49	2.00	2.51		0.39	0.70	0.70	2.32	0.92	2.10	2.22
N	0.71	1.01	0.93	1.35	1.76	0.50	1.95	2.35	0.39		0.36	0.94	2.24	0.71	1.95	2.10
O	0.93	0.95	0.74	1.15	1.49	0.51	1.71	2.02	0.70	0.36		1.02	1.96	0.42	1.63	1.81
R	0.38	0.41	0.71	0.93	1.43	0.51	1.52	2.17	0.70	0.94	1.02		1.87	0.92	1.79	1.82
S	2.19	1.48	1.33	0.96	0.48	1.84	0.36	0.50	2.32	2.24	1.96	1.87		1.54	0.49	0.21
U	0.99	0.69	0.37	0.74	1.07	0.49	1.29	1.63	0.92	0.71	0.42	0.92	1.54		1.23	1.40
W	2.05	1.38	1.13	0.88	0.43	1.62	0.57	0.40	2.10	1.95	1.63	1.79	0.49	1.23		0.28
Z	2.12	1.42	1.23	0.90	0.39	1.73	0.40	0.39	2.22	2.10	1.81	1.82	0.21	1.40	0.28	

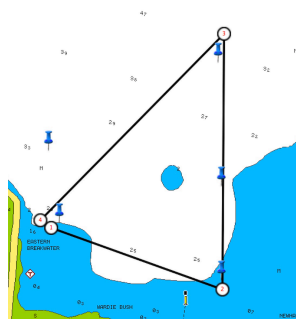
FCYC Friday White Sail Courses

CAPITAL LETTERS TO **PORT** small letters to **starboard**.

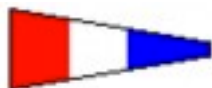
COURSE 1: START(Q), S, W, k, q
repeat until shortened course flag



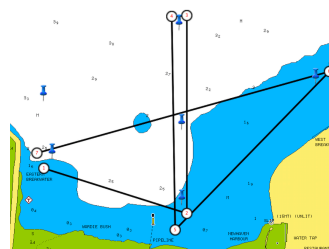
COURSE 2: START(Q), S, W, Q,
repeat until shortened course flag



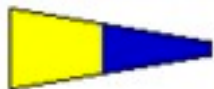
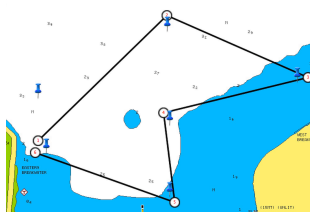
COURSE 3: START(Q), S, L, W, Q,
repeat until shortened course flag



COURSE 4: START(Q), S, W, S, L, Q,
repeat until shortened course flag



COURSE 5: START(Q), w, l, Z, s, q
repeat until shortened course flag



COURSE 6: START(Q), L, W, s, q,
repeat until shortened course flag

