



DataLyzer SPC Wizard

SOFTWARE FOR STATISTICAL PROCESS CONTROL

DATALYZER
International
Partners in Continuous Improvement

For Students, Trainers and SPC Users

SPC Training

Learning and teaching SPC and applying real time SPC tools to your quality data is made easier with Datalyzer's SPC Wizard. SPC Wizard is unique in that it combines a complete SPC training module containing process simulations and a process improvement game with full functionality for real-time data entry and analysis of both variables and attributes. This means you are not trained how to conduct a control chart but you are trained how to apply the SPC techniques to improve the process. The program can be used for self-training but also for classroom training. With purchase of the program you get a complete train-the-trainer manual how to conduct SPC training.

Self-paced Step-by-Step tutorials

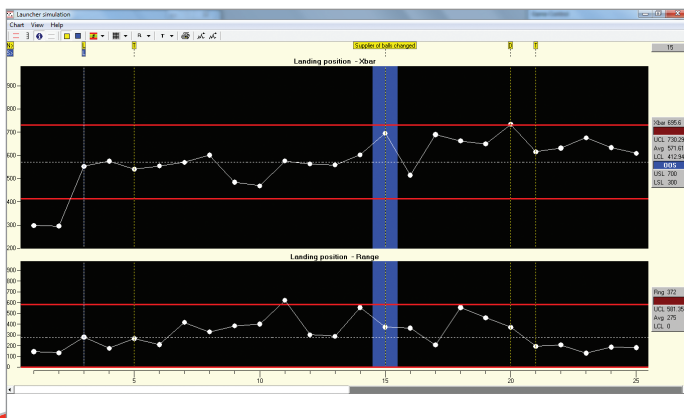
The Tutorials contain explanation of SPC concepts in simple English with guide to use the simulators encouraging a hands-on approach in learning concepts. An example training can be viewed on <http://www.datalyzer.com/pca-training/>

Dr Deming's Experiments

SPC Wizard contains simulations of Dr Deming's Red Beads Experiment and Funnel Experiment showing how easy it is to come to the wrong conclusions about people and processes by looking at just raw data. This is a must.

Process Simulations

Datalyzer's own Tennis Ball Launcher and Bead box simulation programs generate 'variable' and 'attribute' type data similar to taking measurements of a product or service characteristic. The nature of the variation can be changed at any time and this produces 'special' type variation. These simulations show why control charts are so useful in improving our understanding of process variation. (Customer data or other data can also be used)



Integrated View

The SPC wizard can show multiple SPC tools i.e Control charts, Histograms, Pareto's and Scattergram including the data table and the simulator making is very convenient to view and understand the effect of data on each of the different tools and to explain concepts like capability analysis.

Process Improvement Game

A special game has been developed to give students a chance to practice using control charts. The game simulates a process that is not initially in a state of statistical control. The student has to apply the SPC techniques to improve the process. The process is won when a required capability is achieved. The process is lost if time and money is invested in solving special causes which are not present in the game.

SPC Analysis

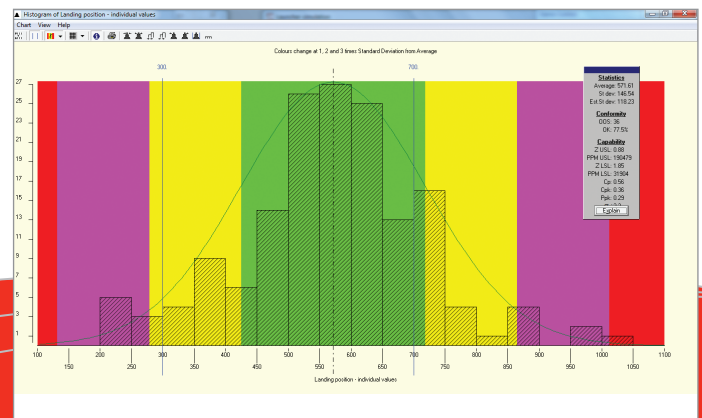
Flexible and Agile Usability of common SPC Tools

Provides facility to drag and drop data, select any section of the data, include/exclude data points with any combination of attributes, with instantaneous creation/refresh of control charts, histograms, Pareto's, scattergrams, multi vari and F and t test allowing the needed flexibility during analysis. This makes SPC Wizard an excellent tool for green belts and yellow belts in your six sigma implementation or for promoting the use of SPC with suppliers.

All screens provide extensive help on the techniques used.

Quick Import

Data can be imported on the fly from Datalyzer Microsoft Excel, Access, SQL Server, Oracle Server or any ODBC compliant database with or without previous setup. In Excel it is possible to define the SPC setup so automatically all chart settings are available when data is imported from Excel.



Control chart Analysis:

Control chart can be created and analyzed. SPC Wizard contains many features to facilitate data analysis, for example:

- calculate control limits using any section of the data with multiple calculation rules;
- make analysis based on parameters added to the chart like operators, ordernumbers, articlenumbers etc. (multi variance analysis)
- select attributes to appear in a chart;
- multiple control charts in one screen;
- time based analysis;
- add notes to the samples;
- exclude points from the calculations;

Capability Analysis

The tool can create histograms against a given set of data and allow several following options to aid investigation, for example:

- Toggle between real standard deviation and estimated standard deviation
- Dragging of Specification Limits (temporary) which useful for investigating process capability.
- Scales are made identical while studying multiple histograms

Correlation Analysis

Correlation can be made between variable data, attribute data and numeric optional parameters. A full correlation table can be created between multiple columns.

During analysis data points can be excluded in the scattergram view.

Pareto Analysis

Pareto graphs can be made from attribute data but also from logbook entries. Specific columns can be excluded from the analysis

Multi Vari Analysis:

Multi Vari analysis based on time and parameters(operators, suppliers and machines etc) up to three factors , serving as a preliminary tool to get ideas for further investigation. Further

the tool allows to pick the response data points on the screen and instantly conduct the F and T test in steps showing the normal curve , confidence interval and the data itself.

Frequency Analysis

SPC wizard allows instantaneous frequency analysis of events with for grouped and ungrouped data against time , parameters and notes with Pareto ordering and percentage

Create Custom Database

Users can create their own database with data tables that can be either Variable or Attribute type and define the SPC properties for each column. The system can be used as a stand-alone SPC system.

Advanced Data Set Operations

In addition to the common tools SPC Wizard contains some advanced tools to analyze data.

You can for example combine data from different data sources and join the data based on a common parameter (eg Serial number) or based on time differences.

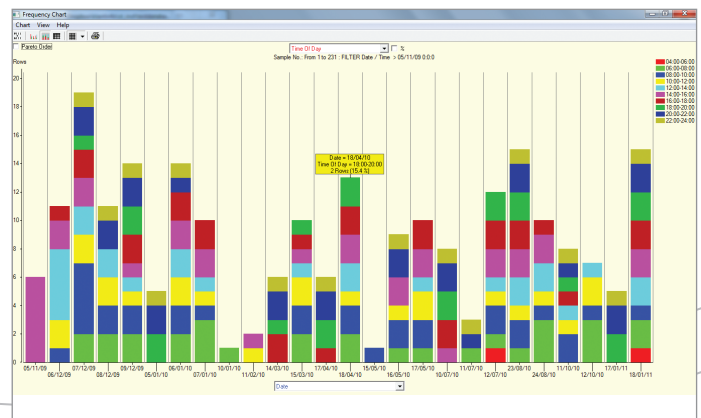
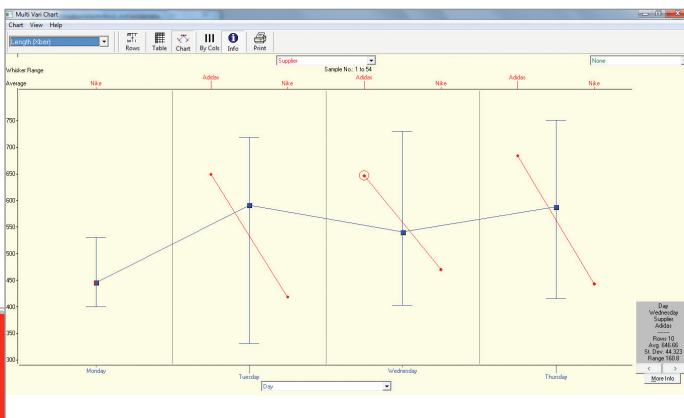
Multiple data sources can be combined automatically.

Some examples:

- Data captured in the SPC system can be easily correlated with supplier data found in Excel files and environmental data found in the database of the logging system.
- A major medical device company uses the tools to apply full tracking and tracing of an individual product through all process steps.

Integration with DataLyzr Spectrum Online SPC

SPC Wizard is seamlessly integrated with DataLyzr Spectrum, the online SPC tool providing real time SPC analysis eliminating the need for export and data migration across tools.



Customer Support

Technical support for the DataLyzer SPC Wizard system is available by phone, fax, or e-mail.

USA: Monday through Friday, 8:30 to 5:30 ET

Europe: Monday through Friday, 8:30 to 6:30 GMT -1

Asia: Monday through Friday IST 8:30 to 6:30

Software purchases include no-charge updates for six months.

Support agreements are renewable annually for a modest fee. Services include new versions upon request and personal telephone, fax or e-mail support.

Training seminars are available in our offices or on site. Contact your salesperson for more information.

Custom software modifications can be quoted individually.

Download demonstration versions at www.datalyzer.com

Oracle is a registered trademark of Oracle Corporation and/or its affiliates. Access is a trademark of Microsoft Corporation. Microsoft, Excel, SQL Server, Windows NT, Windows, Windows Vista are registered trademarks of Microsoft Corporation in the United States and other countries.

COMPANY HISTORY

DataLyzer International, Inc. was organized in the late 1970's to develop quality software for industry. Since that time we have established a solid reputation for innovation and customer responsiveness. DataLyzer International has contributed many firsts to its industry.

DataLyzer International was one of the first companies to provide a commercial SPC software package for industry in the early 1980's. Soon after, we developed the first commercial Gage Repeatability and Reproducibility software package. DataLyzer International was the first to introduce real-time data entry to its SPC packages and the first to introduce enterprise-wide solutions via local area networks as early as 1987. More recently, DataLyzer International was the first to offer multilingual SPC software products on multiple database platforms.

In the past during SPC implementations training all people in understanding SPC techniques was a real challenge. For this reason we have developed DataLyzer SPC Wizard, which has proven to make training significantly better and cheaper.

European office

DataLyzer International bv
San Giorgilaan 2
5644 DS Eindhoven
The Netherlands
T +31-40-2940980
E sales@datalyzer.com

American office

DataLyzer International, Inc.
29445 Beck Road, A-207
Wixom, MI 48393
USA
T + 1-248-960-3535
T 800-553-4SPC (4772) within the U.S.
F + 1-248-946-8490
E sales@datalyzer.com

UK office

DataLyzer
Ridge Way
Dalgety Bay, Fife KY11 9JN
United Kingdom.
T +44-759 839 1150
E sjmurphy@datalyzer.com

Asian office

DataLyzer Technologies Pvt Ltd
No.205, Brigade MM, Annexe Block,
53/1, K.R. Road, Jayanagar VII Block
Bangalore 560070, Karnataka
India
Tel: +91 9740013624
Tel: +91 8026769337
E salesindia@datalyzer.com

www.datalyzer.com

International Distributors

DataLyzer International has a very capable international distributor network. Most distributors have a long term relationship with our company and years of experience with the implementation of SPC, OEE and DataLyzer software. For your local distributor look at www.datalyzer.com/reseller.

Free webinars are given regularly. Please register on datalyzer.webex.com

[View guided tour](#)

<http://www.datalyzer.com/guided-tour-wizard/>