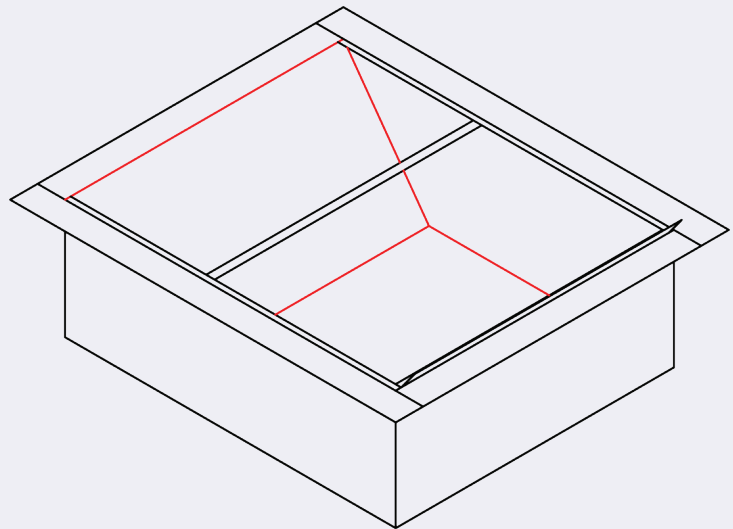
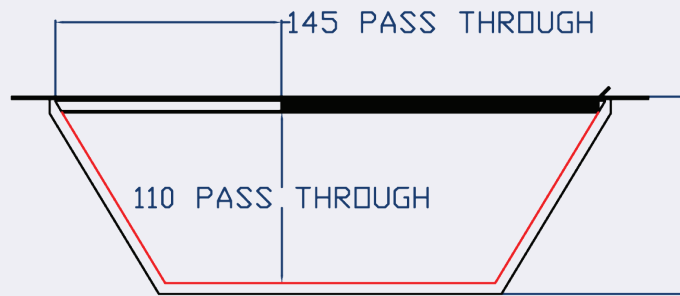
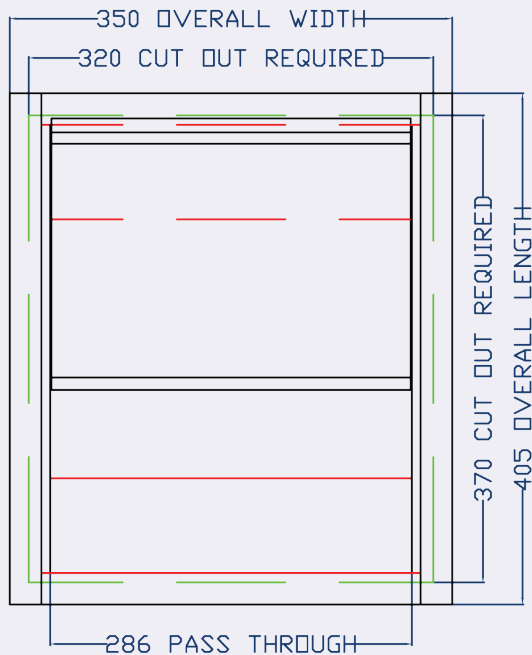


TECHNICAL SPECIFICATION:

TYPE DT2 - 110mm DOCUMENT PASSING TRAY



DESCRIPTION:

STANDARD TYPE DT2 DOCUMENT PASSING TRAY

FINISH:

SCOOP - BRUSHED STAINLESS STEEL

ANGLE SIDES - BLACK POWDER COATED

SLIDING TOP - CLEAR POLYCARBONATE WITH
STAINLESS STEEL PULL ANGLE

OVERALL SIZE - 350 x 405 x 128mm

CUT OUT REQUIRED - 320 x 370 x 130mm

OPTIONS:

BULLET RESISTANT SHOT BOX

NON STANDARD SIZES

NOT SUITABLE FOR EXTERNAL APPLICATIONS

