



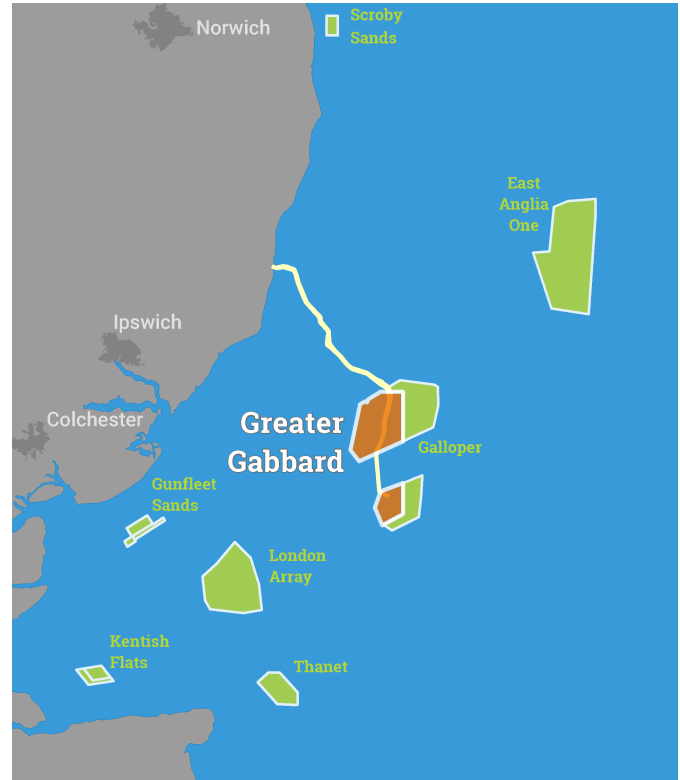
Kingfisher Wind farms chart

seafish
Kingfisher Information

Greater Gabbard offshore wind farm
January 2020

Description

The Greater Gabbard Offshore Wind Farm is operated by Innogy SE and SSE Renewables. It is situated approximately 36 km from shore in the Southern North Sea, off the South East coast of Essex. The wind farm is fully operational and has 140 turbines, a total capacity of 504 MW and covers an area of approximately 146 km².



Emergency procedures

1. If you suspect you have snagged a subsea cable or renewable energy structure, DO NOT endanger your vessel and crew by attempting to recover your gear.
2. Carefully plot your vessel's position as accurately as possible.
3. Advise the Coastguard of your situation, and call the 24 hour Emergency Number and state that an incident is occurring concerning a subsea cable or renewable energy structure.

Reducing the risks whilst fishing

To reduce the risks of fishing near offshore structures, it is essential to be up to date with KIS-ORCA information. KIS-ORCA information is easy to install on your vessel's fishing plotter and ensures skippers are able to make informed decisions for their safety.

The closer to the surface a subsea cable is lifted when fouled by fishing gear, the more danger there is to the fishing vessel. In the interests of fishing safety and to prevent damage to subsea structures, fishermen are advised to exercise caution when fishing in the vicinity of subsea cables and renewable energy structures. Loss of gear, fishing time and catch can result if a trawler snags a subsea structure and there is serious risk of loss of life.

Emergency contact number +44(0)1502 524001



**Greater Gabbard
Offshore Wind Farm**

- Key**
- Site boundary
 - Wind turbine
 - Buoy
 - Met Mast
 - Substation
 - Mattress
 - Export cable
 - Inter array cable
 - Telecomms cable
 - Power cable
 - Out of Use cable

Grey coloured features displayed on this chart represent additional offshore wind farm structures. Visit www.kis-orca.eu/map for more info.

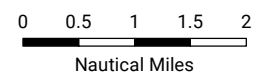


Projection: World_Mercator
Spheroid: GCS_WGS_1984
Datum: D_WGS_1984

This data is issued as a guide only. Seafish, cable / structure owners and Distributors accept no responsibility for any inaccuracies however caused.

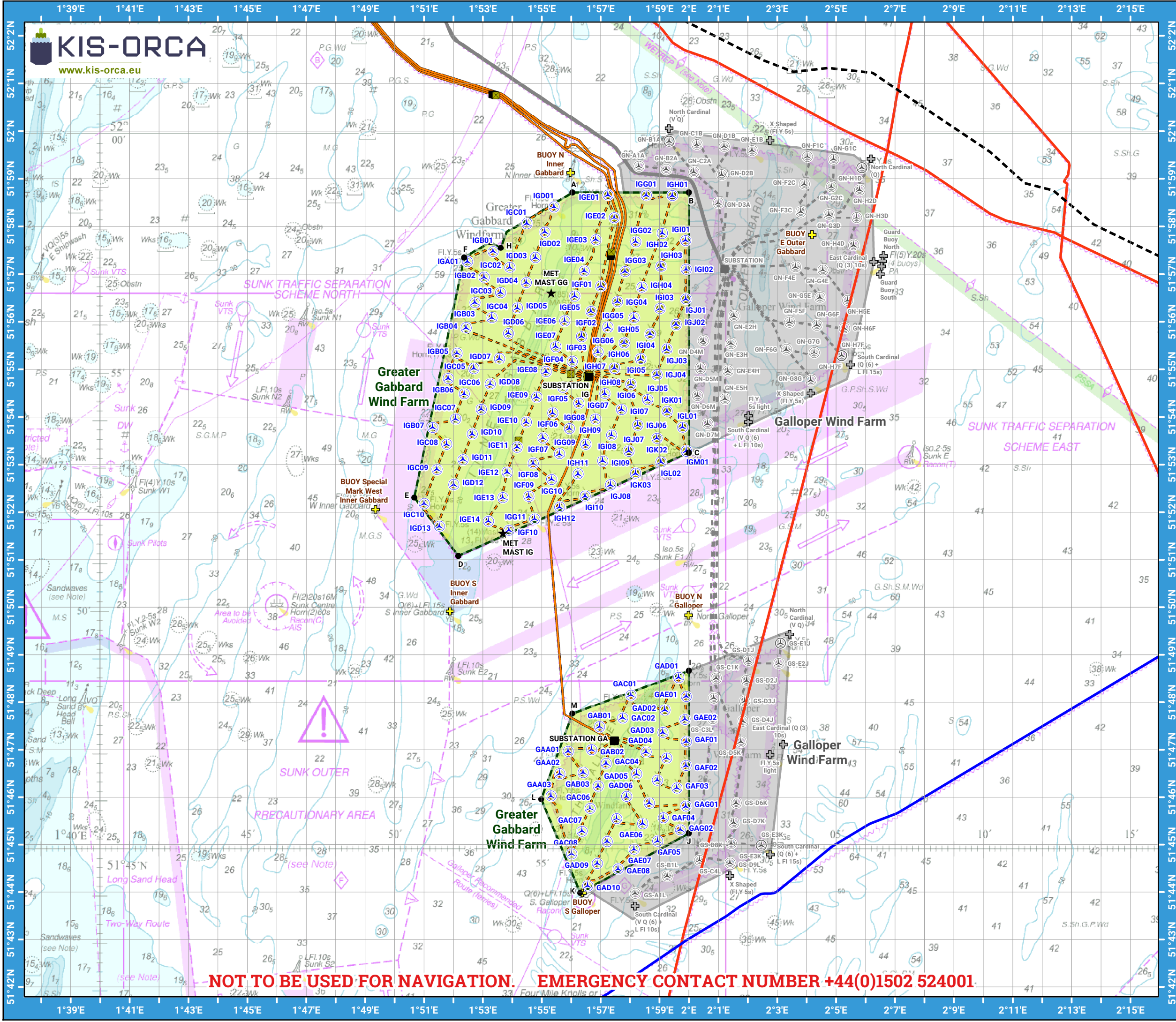
Please be aware that other structures & cables may exist in addition to those shown on this chart.

©Crown Copyright and/or database rights. Reproduced by permission of the Controller of Her Majesty's Stationery Office and the UK Hydrographic Office (www.GOV.uk/UKHO).



Scale @ A3:
1:125,000

NOT TO BE USED FOR NAVIGATION. EMERGENCY CONTACT NUMBER +44(0)1502 524001.



Asset locations

Extents

A	51°58.710'N 01°56.040'E
B	51°58.710'N 02°00.000'E
C	51°53.250'N 02°00.000'E
D	51°51.078'N 01°52.170'E
E	51°52.308'N 01°50.676'E
F	51°57.348'N 01°52.368'E
G	51°57.672'N 01°53.250'E
H	51°57.546'N 01°53.610'E
I	51°48.660'N 02°00.000'E
J	51°45.240'N 02°00.000'E

Extents

K	51°43.980'N 01°56.310'E
L	51°45.960'N 01°54.984'E
M	51°47.760'N 01°56.040'E

Infrastructure

BUOY E Outer Gabbard	51°57.830'N 02°04.187'E
BUOY N Galloper	51°49.837'N 01°59.993'E
BUOY N Inner Gabbard	51°59.129'N 01°55.988'E
BUOY S Galloper	51°43.981'N 01°56.389'E
BUOY S Inner Gabbard	51°49.922'N 01°51.892'E
BUOY Special Mark West Inner Gabbard	51°52.061'N 01°49.368'E
MET MAST GG	51°56.605'N 01°55.326'E
MET MAST IG	51°51.561'N 01°53.682'E
SUBSTATION GA	51°47.190'N 01°57.473'E
SUBSTATION IG	51°54.846'N 01°56.606'E

Turbines

GAA01	51°46.968'N 01°55.901'E
GAA02	51°46.494'N 01°55.612'E
GAA03	51°46.026'N 01°55.320'E
GAB01	51°47.484'N 01°56.963'E
GAB02	51°47.003'N 01°56.693'E
GAB03	51°46.518'N 01°56.411'E
GAC01	51°48.150'N 01°58.031'E
GAC02	51°47.670'N 01°57.750'E
GAC04	51°46.710'N 01°57.190'E
GAC05	51°46.230'N 01°56.921'E
GAC06	51°45.762'N 01°56.645'E
GAC07	51°45.281'N 01°56.369'E
GAC08	51°44.808'N 01°56.015'E
GAD01	51°48.522'N 01°59.651'E
GAD02	51°47.837'N 01°59.183'E
GAD03	51°47.365'N 01°59.117'E
GAD04	51°46.956'N 01°58.546'E
GAD05	51°46.488'N 01°58.224'E
GAD06	51°46.014'N 01°57.881'E
GAD07	51°45.546'N 01°57.545'E
GAD08	51°45.066'N 01°57.227'E
GAD09	51°44.604'N 01°56.886'E
GAD10	51°44.130'N 01°56.563'E
GAE01	51°48.120'N 01°59.910'E
GAE02	51°47.640'N 01°59.867'E
GAE03	51°46.825'N 01°59.245'E
GAE04	51°46.356'N 01°58.925'E
GAE05	51°45.881'N 01°58.654'E
GAE06	51°45.444'N 01°58.427'E
GAE07	51°44.904'N 01°58.138'E
GAE08	51°44.489'N 01°57.598'E
GAF01	51°47.173'N 01°59.910'E
GAF02	51°46.667'N 01°59.902'E
GAF03	51°46.194'N 01°59.591'E
GAF04	51°45.564'N 01°59.129'E

Turbines

GAF05	51°45.077'N 01°58.938'E
GAG01	51°45.810'N 01°59.896'E
GAG02	51°45.311'N 01°59.706'E
IGA01	51°57.264'N 01°52.481'E
IGB01	51°57.474'N 01°53.350'E
IGB02	51°56.934'N 01°53.045'E
IGB03	51°56.399'N 01°52.733'E
IGB04	51°55.872'N 01°52.433'E
IGB05	51°55.338'N 01°52.128'E
IGB06	51°54.810'N 01°51.827'E
IGB07	51°53.777'N 01°51.300'E
IGC01	51°58.062'N 01°54.496'E
IGC02	51°57.144'N 01°53.915'E
IGC03	51°56.610'N 01°53.603'E
IGC04	51°56.082'N 01°53.309'E
IGC05	51°55.019'N 01°52.697'E
IGC06	51°54.486'N 01°52.373'E
IGC07	51°53.958'N 01°52.079'E
IGC08	51°53.424'N 01°51.774'E
IGC09	51°52.897'N 01°51.447'E
IGC10	51°52.182'N 01°51.013'E
IGD01	51°58.410'N 01°55.422'E
IGD02	51°57.882'N 01°55.108'E
IGD03	51°57.348'N 01°54.791'E
IGD04	51°56.820'N 01°54.480'E
IGD05	51°56.286'N 01°54.179'E
IGD06	51°55.758'N 01°53.873'E
IGD07	51°55.224'N 01°53.567'E
IGD08	51°54.695'N 01°53.254'E
IGD09	51°54.162'N 01°52.949'E
IGD10	51°53.640'N 01°52.643'E
IGD11	51°53.106'N 01°52.331'E
IGD12	51°52.578'N 01°52.018'E
IGD13	51°51.702'N 01°51.527'E
IGE01	51°58.657'N 01°57.252'E

Turbines

IGE02	51°58.183'N 01°57.462'E
IGE03	51°57.720'N 01°56.837'E
IGE04	51°57.066'N 01°56.446'E
IGE05	51°56.538'N 01°56.124'E
IGE06	51°56.015'N 01°55.781'E
IGE07	51°55.481'N 01°55.476'E
IGE08	51°54.954'N 01°55.151'E
IGE09	51°54.422'N 01°54.827'E
IGE10	51°53.891'N 01°54.479'E
IGE11	51°53.364'N 01°54.167'E
IGE12	51°52.836'N 01°53.831'E
IGE13	51°52.308'N 01°53.681'E
IGE14	51°51.809'N 01°53.194'E
IGF01	51°56.748'N 01°57.005'E
IGF02	51°56.214'N 01°56.676'E
IGF03	51°55.692'N 01°56.351'E
IGF04	51°55.164'N 01°56.039'E
IGF05	51°54.624'N 01°55.714'E
IGF06	51°54.084'N 01°55.373'E
IGF07	51°53.556'N 01°55.043'E
IGF08	51°53.022'N 01°54.714'E
IGF09	51°52.332'N 01°54.564'E
IGF10	51°51.618'N 01°53.892'E
IGG01	51°58.654'N 01°58.549'E
IGG02	51°57.677'N 01°58.193'E
IGG03	51°57.054'N 01°57.833'E
IGG04	51°56.417'N 01°57.569'E
IGG05	51°55.890'N 01°57.245'E
IGG06	51°55.362'N 01°56.916'E
IGG07	51°54.287'N 01°56.260'E
IGG08	51°53.754'N 01°55.938'E
IGG09	51°53.226'N 01°55.606'E
IGG10	51°52.686'N 01°55.337'E
IGG11	51°51.857'N 01°54.761'E
IGH01	51°58.646'N 01°59.435'E

Turbines

IGH02	51°57.857'N 01°59.093'E
IGH03	51°57.161'N 01°59.051'E
IGH04	51°56.724'N 01°58.403'E
IGH05	51°56.081'N 01°58.133'E
IGH06	51°55.554'N 01°57.803'E
IGH07	51°55.025'N 01°57.472'E
IGH08	51°54.492'N 01°57.144'E
IGH09	51°53.958'N 01°56.825'E
IGH10	51°53.425'N 01°56.496'E
IGH11	51°52.800'N 01°56.237'E
IGH12	51°52.110'N 01°55.607'E
IGI01	51°57.702'N 01°59.885'E
IGI02	51°57.102'N 01°59.904'E
IGI03	51°56.274'N 01°59.015'E
IGI04	51°55.745'N 01°58.683'E
IGI05	51°55.218'N 01°58.361'E
IGI06	51°54.690'N 01°58.026'E
IGI07	51°54.156'N 01°57.707'E
IGI08	51°53.616'N 01°57.371'E
IGI09	51°53.076'N 01°57.071'E
IGI10	51°52.338'N 01°56.477'E
IGJ01	51°56.476'N 01°59.896'E
IGJ02	51°55.943'N 01°59.565'E
IGJ03	51°55.422'N 01°59.246'E
IGJ04	51°54.888'N 01°58.919'E
IGJ05	51°54.366'N 01°58.594'E
IGJ06	51°53.825'N 01°58.259'E
IGJ07	51°53.286'N 01°57.959'E
IGJ08	51°52.572'N 01°57.335'E
IGK01	51°54.119'N 01°59.256'E
IGK02	51°53.549'N 01°58.913'E
IGK03	51°52.812'N 01°58.188'E
IGL01	51°53.784'N 01°59.783'E
IGL02	51°53.052'N 01°59.052'E
IGM01	51°53.286'N 01°59.909'E



Contact us

+44 (0) 1472 252 307
kingfisher@seafish.co.uk
[@kingfisherinfo](https://www.kingfisherinfo.com)
www.kingfishercharts.org

Stay up to date: Always ensure you have the latest Kingfisher Bulletin and Offshore Fishing Plotter on-board