

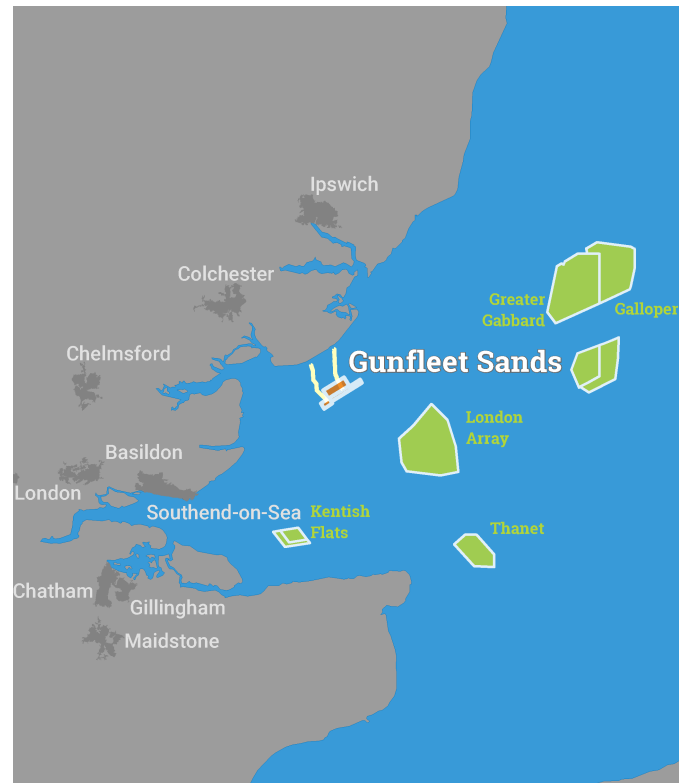


Kingfisher Wind farms chart

**Gunfleet Sands and Demonstration Site
offshore wind farm**
January 2020

Description

The Gunfleet Sands Offshore Wind Farm and Demonstration Site is operated by Orsted. It is situated approximately 7 km from shore in the Southern North Sea, in the Thames Estuary. The wind farm is fully operational and has 48 turbines, a total capacity of 172.8 MW and covers an area of approximately 16 km². The demonstration site wind farm is fully operational and has 2 turbines, a total capacity of 12 MW and covers an area of approximately 3 km².



Emergency procedures

1. If you suspect you have snagged a subsea cable or renewable energy structure, DO NOT endanger your vessel and crew by attempting to recover your gear.
2. Carefully plot your vessel's position as accurately as possible.
3. Advise the Coastguard of your situation, and call the 24 hour Emergency Number and state that an incident is occurring concerning a subsea cable or renewable energy structure.

Reducing the risks whilst fishing

To reduce the risks of fishing near offshore structures, it is essential to be up to date with KIS-ORCA information. KIS-ORCA information is easy to install on your vessel's fishing plotter and ensures skippers are able to make informed decisions for their safety.

The closer to the surface a subsea cable is lifted when fouled by fishing gear, the more danger there is to the fishing vessel. In the interests of fishing safety and to prevent damage to subsea structures, fishermen are advised to exercise caution when fishing in the vicinity of subsea cables and renewable energy structures. Loss of gear, fishing time and catch can result if a trawler snags a subsea structure and there is serious risk of loss of life.

Emergency contact number +44(0)7855 028591

only in the designated anchorage areas. Vessels may not anchor in a fairway except in an emergency or for the purpose of manoeuvring. For further details, see ADMIRALTY Sailing Directions.

vessels embarking may be encountered. Vessels may not anchor in a fairway except in an emergency or for the purpose of manoeuvring. For further details, see ADMIRALTY Sailing Directions.

ing traffic may be encountered. Vessels may not anchor in a fairway except in an emergency or for the purpose of manoeuvring. For further details, see ADMIRALTY Sailing Directions.

ing traffic may be encountered. Vessels may not anchor in a fairway except in an emergency or for the purpose of manoeuvring. For further details, see ADMIRALTY Sailing Directions.

ing traffic may be encountered. Vessels may not anchor in a fairway except in an emergency or for the purpose of manoeuvring. For further details, see ADMIRALTY Sailing Directions.

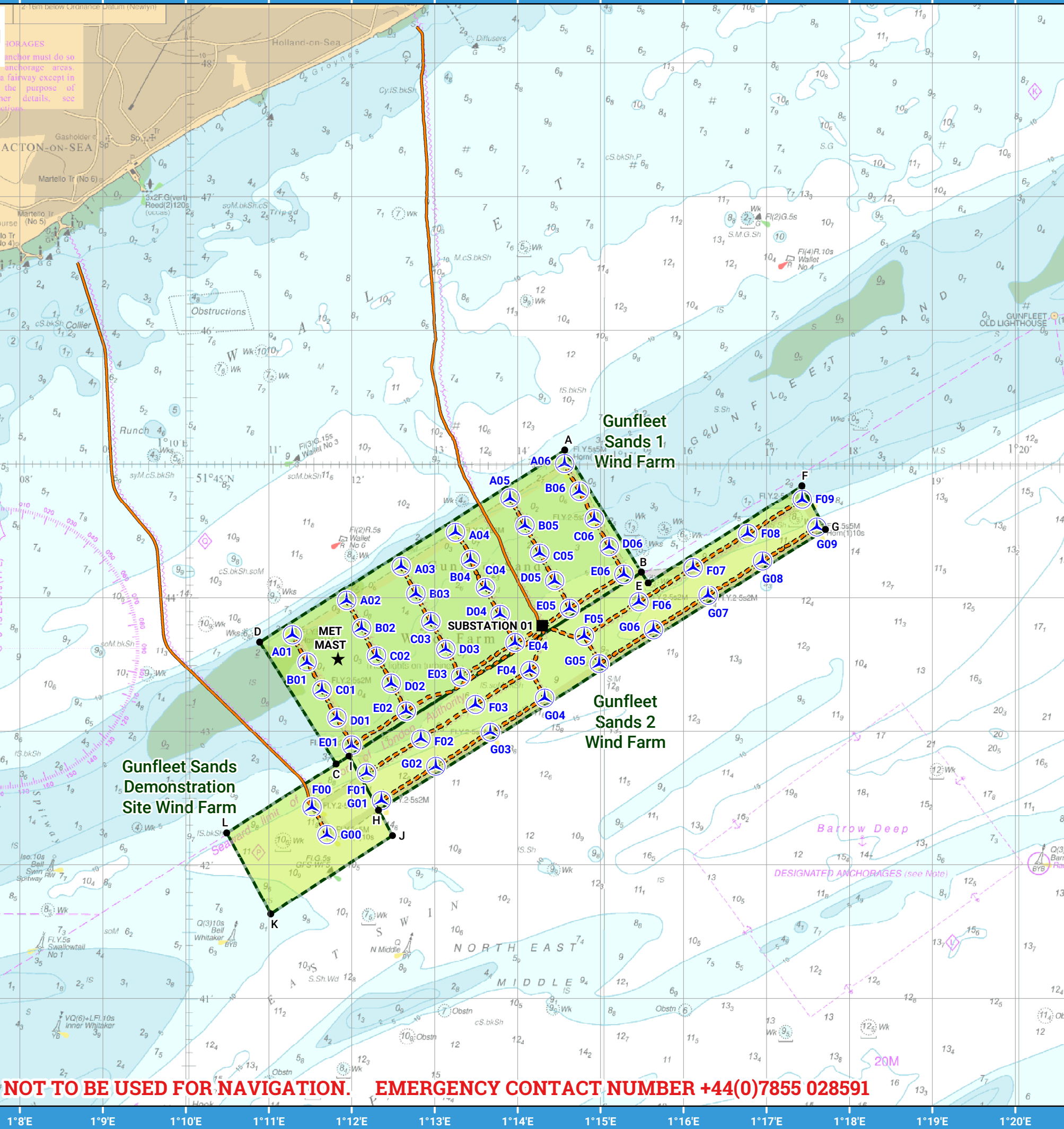
ing traffic may be encountered. Vessels may not anchor in a fairway except in an emergency or for the purpose of manoeuvring. For further details, see ADMIRALTY Sailing Directions.

ing traffic may be encountered. Vessels may not anchor in a fairway except in an emergency or for the purpose of manoeuvring. For further details, see ADMIRALTY Sailing Directions.

ing traffic may be encountered. Vessels may not anchor in a fairway except in an emergency or for the purpose of manoeuvring. For further details, see ADMIRALTY Sailing Directions.

ing traffic may be encountered. Vessels may not anchor in a fairway except in an emergency or for the purpose of manoeuvring. For further details, see ADMIRALTY Sailing Directions.

ing traffic may be encountered. Vessels may not anchor in a fairway except in an emergency or for the purpose of manoeuvring. For further details, see ADMIRALTY Sailing Directions.



NOT TO BE USED FOR NAVIGATION. EMERGENCY CONTACT NUMBER +44(0)7855 028591

Gunfleet Sands and Demonstration Site Offshore Wind Farm

- Key**
- Site boundary
 - Wind turbine
 - Met Mast
 - Substation
 - Export cable
 - Inter array cable

Grey coloured features displayed on this chart represent additional offshore wind farm structures. Visit www.kis-orca.eu/map for more info.

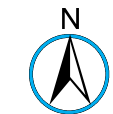
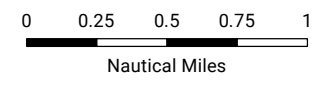


Projection: World_Mercator
Spheroid: GCS_WGS_1984
Datum: D_WGS_1984

This data is issued as a guide only. Seafish, cable / structure owners and Distributors accept no responsibility for any inaccuracies however caused.

Please be aware that other structures & cables may exist in addition to those shown on this chart.

©Crown Copyright and/or database rights. Reproduced by permission of the Controller of Her Majesty's Stationery Office and the UK Hydrographic Office (www.GOV.UK/UKHO).



Scale @ A3:
1:50000

Asset locations

Extents

A	51°45.104'N 01°14.569'E
B	51°44.191'N 01°15.492'E
C	51°42.757'N 01°11.816'E
D	51°43.670'N 01°10.892'E
E	51°44.111'N 01°15.574'E
F	51°44.837'N 01°17.426'E

Extents

G	51°44.512'N 01°17.710'E
H	51°42.412'N 01°12.324'E
I	51°42.817'N 01°11.970'E
J	51°42.220'N 01°12.493'E
K	51°41.633'N 01°11.028'E
L	51°42.240'N 01°10.494'E

Infrastructure

MET MAST	51°43.545'N 01°11.838'E
SUBSTATION 01	51°43.792'N 01°14.297'E

Gunfleet Sands 1 Turbines

A01	51°43.724'N 01°11.285'E
A02	51°43.980'N 01°11.941'E
A03	51°44.235'N 01°12.597'E
A04	51°44.491'N 01°13.253'E
A05	51°44.747'N 01°13.909'E
A06	51°45.003'N 01°14.565'E
B01	51°43.517'N 01°11.464'E
B02	51°43.773'N 01°12.120'E
B03	51°44.029'N 01°12.776'E
B04	51°44.285'N 01°13.432'E
B05	51°44.541'N 01°14.088'E
B06	51°44.797'N 01°14.744'E
C01	51°43.310'N 01°11.643'E
C02	51°43.566'N 01°12.299'E
C03	51°43.822'N 01°12.955'E
C04	51°44.078'N 01°13.611'E
C05	51°44.334'N 01°14.267'E
C06	51°44.590'N 01°14.923'E
D01	51°43.103'N 01°11.822'E
D02	51°43.359'N 01°12.478'E
D03	51°43.615'N 01°13.134'E
D04	51°43.876'N 01°13.790'E
D05	51°44.127'N 01°14.446'E
D06	51°44.383'N 01°15.102'E
E01	51°42.896'N 01°12.001'E
E02	51°43.152'N 01°12.657'E
E03	51°43.408'N 01°13.313'E
E04	51°43.664'N 01°13.969'E
E05	51°43.920'N 01°14.625'E
E06	51°44.176'N 01°15.281'E

Gunfleet Sands 2 Turbines

F01	51°42.689'N 01°12.180'E
F02	51°42.945'N 01°12.836'E
F03	51°43.201'N 01°13.492'E
F04	51°43.457'N 01°14.147'E
F05	51°43.713'N 01°14.804'E
F06	51°43.969'N 01°15.460'E
F07	51°44.225'N 01°16.116'E
F08	51°44.481'N 01°16.772'E
F09	51°44.737'N 01°17.428'E
G01	51°42.483'N 01°12.359'E
G02	51°42.738'N 01°13.015'E
G03	51°42.994'N 01°13.671'E
G04	51°43.250'N 01°14.327'E
G05	51°43.506'N 01°14.983'E
G06	51°43.762'N 01°15.639'E
G07	51°44.018'N 01°16.295'E
G08	51°44.274'N 01°16.951'E
G09	51°44.530'N 01°17.607'E

Gunfleet Sands Demonstration Site Turbines

F00	51°42.434'N 01°11.524'E
G00	51°42.227'N 01°11.703'E



Contact us

+44 (0) 1472 252 307
 ✉ kingfisher@seafish.co.uk
 🐦 @kingfisherinfo
www.kingfishercharts.org

Stay up to date: Always ensure you have the latest Kingfisher Bulletin and Offshore Fishing Plotter on-board