

Eastern Shipbuilding Group, Inc. Delivers Dual Mode Articulated Tug/Barge (ATB) Trailing Suction Hopper Dredge to Great Lakes Dredge & Dock Company, LLC



Eastern Shipbuilding Group, Inc. is pleased to announce the delivery of a Dual Mode Articulated Tug/Barge (ATB) Trailing Suction Hopper Dredge to Great Lakes Dredge & Dock Company, LLC. Named the DOUGLAS B MACKIE, honoring the company's former CEO and Chairman of the Board (ESG Hull 252) ATB Tug detail designed and engineered by Ship's Architect, Inc. and the ELLIS ISLAND, the gateway to America representing a new beginning for so many(ESG Hull 253) ATB Hopper Dredge Barge detail designed by Bay Engineering, Inc. Both vessels are based on concept designs by Ocean Tug & Barge Engineering, Inc.

Brian D'Isernia, CEO of Eastern Shipbuilding Group, stated "We are particularly proud of constructing this ATB Dual Mode Trailing Suction Hopper Dredge for Great Lakes Dredge & Dock Company, LLC as it is the largest hopper dredge built in the United State to date.

David Simonelli, President, Dredging Division, said, "We are excited to take delivery of this advanced vessel which improves the competitiveness of our hopper group and represents a substantial reinvestment in our fleet. The ELLIS ISLAND significantly increases the United States commercial Jones Act hopper fleet capacity as the largest hopper dredge in the United States market, with a carrying capacity of 15,000 cubic yards."

The Hopper Dredge Barge ATB features the following characteristics:

ELLIS ISLAND ATB Trailing Suction Hopper Dredge Barge:

Dimensions (Overall):	433'x 92'x 36'
Hopper Capacity:	15,000 CYS
Dredge System Power:	(2) EMD ME20G7C-T3, 5,000HP each
Bow Thrusters:	(2) Schottel STT2 Electric, Fixed Pitch Tunnel Units 800HP each
Harbor Service Genset:	(1) Caterpillar C32-T3 910kW @ 1800RPM
Classification:	ABS ✕A1, ✕AMS, Unmanned Cargo Barge and certified under SOLAS/IMO/MARPOL.
Flag & Regulatory:	USA, USCG, 33/46CFR NVIC Publications, Certificated "I" Unmanned.

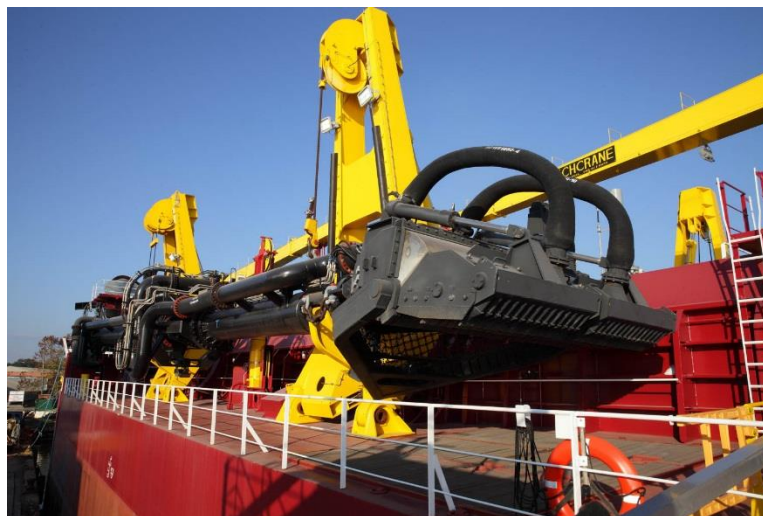




ELLIS ISLAND Hopper Area



Main Deck Hopper Area



Suction Drag Arm



Dredge Pump 5,000HP EMD Diesel Engine



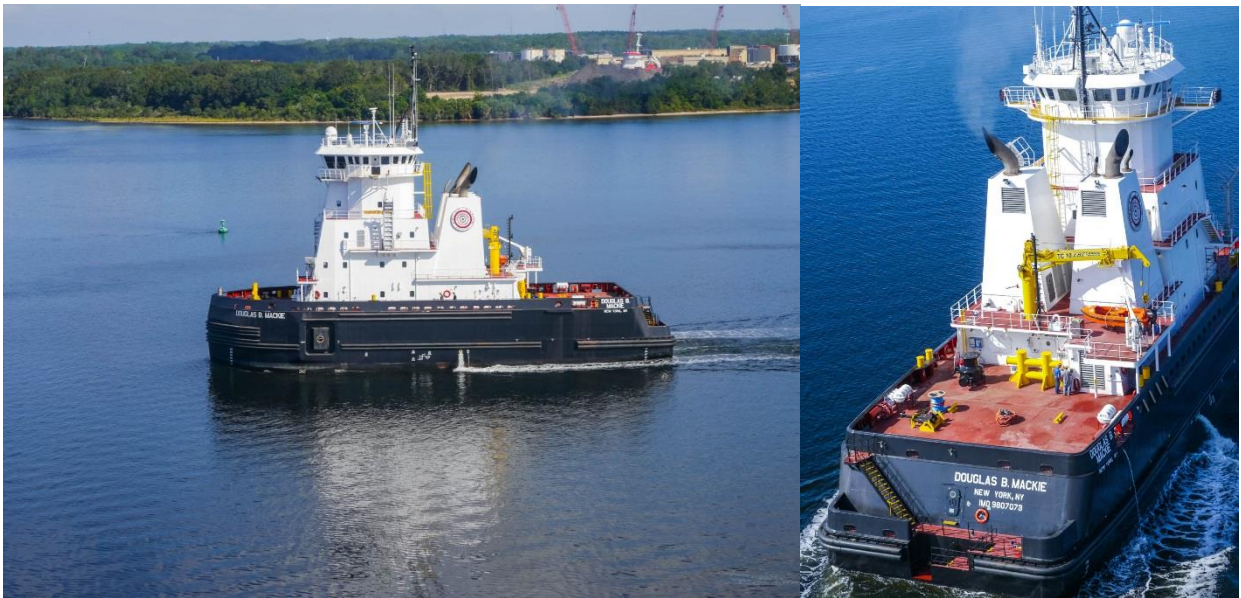
Jet Pump Motors - Engine Room



Dredge Switchgear Room

DOUGLAS B MACKIE ATB Tug:

Dimensions (Overall):	158'-4" x 52' x 32'-9"
Total Installed Horsepower:	17,378 BHP
ATB Coupler System:	(2) Taisei Coupler Systems
Main Engines:	(2) MAK 12M32C-T3, 7,831HP each
Main Generators:	(2) 2,500kW, 6600VAC Shaft Generators
Auxiliary Generator:	(1) Caterpillar C32-T3 730kW @ 1800RPM
Emergency Generator:	(1) Caterpillar C18-T3 550kW @ 1800RPM
Classification:	ABS ✕A1, ✕AMS, ACCU, Oceans Towing Vessel Unlimited Service additional notations ILO, and certified under SOLAS/IMO/MARPOL.
Flag & Regulatory:	USA, USCG Dual-Mode ITB, 33/46CFR Subchapters, E, F, G, I, J, M, Q and S



DOUGLAS B MACKIE Pilothouse

www.easternshipbuilding.com



Dredge Control Station



Accommodations



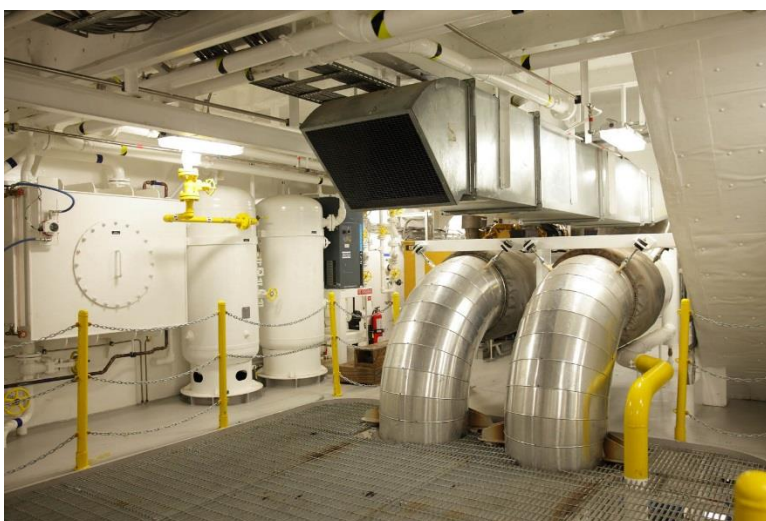
Mess Area



Galley



Workout Room



Ventilation



MAK Diesel Main Engine



730kW Caterpillar Auxiliary Generator



Taisei Coupler System HPU



Engine Control Room

Eastern is proud to assist Great Lakes in delivering this investment in the maritime future of America, constructing these two state-of-the-art “Jones Act” vessels to meet the Country’s growing needs. “Built in an American shipyard by American workers, crewed by American seamen and owned and operated by an American company.”



The Great Lakes ATB hopper dredge will be a key tool in performing the restoration of the eroded land mass in the Gulf Coast States. Additionally, the vessel’s ability to cost-effectively deepen and maintain navigable waterways will bolster the United States’ competitive position in world trade, as the nation’s ports move forward with deepening plans to accommodate the larger vessels, which will sail through the expanded Panama Canal.

Great Lakes Dredge & Dock Corporation is the largest provider of dredging services in the United States and the only U.S. dredging company with significant international operations. Great Lakes Dredge also owns and operates the largest and most diverse fleet in the U.S. dredging industry, comprised of over 200 specialized vessels.

Eastern Shipbuilding is very pleased to be a part of Great Lakes Dredge & Dock's history of innovation and low cost leadership in the U.S. dredging industry.



Eastern Shipbuilding Group, Inc. has two new construction and repair facilities and has been in business since 1976 building new, converting and repairing vessels in steel and aluminum of all types including offshore and harbor/escort tugs, offshore tugs, offshore/platform supply vessels, ATB's, multi-purpose construction vessels, research vessels, firefighting vessels, barges, dredges, ferries, passenger vessels, fishing vessels and inland towboats. Eastern maintains its role as one of the most diversified and innovative construction shipyards in the United States.

Eastern Shipbuilding Group continues to remain a custom shipbuilder, delivering twenty-four (24) vessels of various sizes and designs over the past twenty-four (24) months. <http://www.easternshipbuilding.com>