

### Sheet Feed Section

3 devices prevent feeder from crashing. Lateral manual adjustment device for feeder pile. The powerful feeder is equipped with 4 lifting suction cups and 5 transport suction cups; the lateral direction of suction cups are adjustable according to the paper deformation. Blowers on both sides of the feed system separate the product for a smooth feeding process.1060YMI equips the two-directional electrical fine adjustment to give easier operation.

### Feed Table

A timing belt is used for the feed table which improves presentation to the front and side lays. The slow-down device is useful when feeding thin paper. Sheet detectors and control systems reduce paper waste. The side guides can be changed from push to pull by the simple adjustment of one screw. The wide conveyor belts ensure the smooth transportation of the sheets accurately to the front and side lays units.

### Platen Press Section

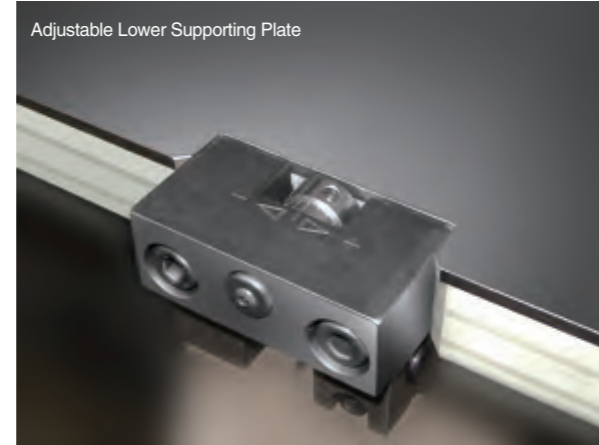
The worm wheel and worm set products are imported from Taiwan whilst the crankshaft is manufactured in our own machining center. The key transmission parts provide our customer with reliability and durability. The platen walls and seat are made of ductile iron in line with British Meehanite casting standard.



Feeding Table



Platen Press Section

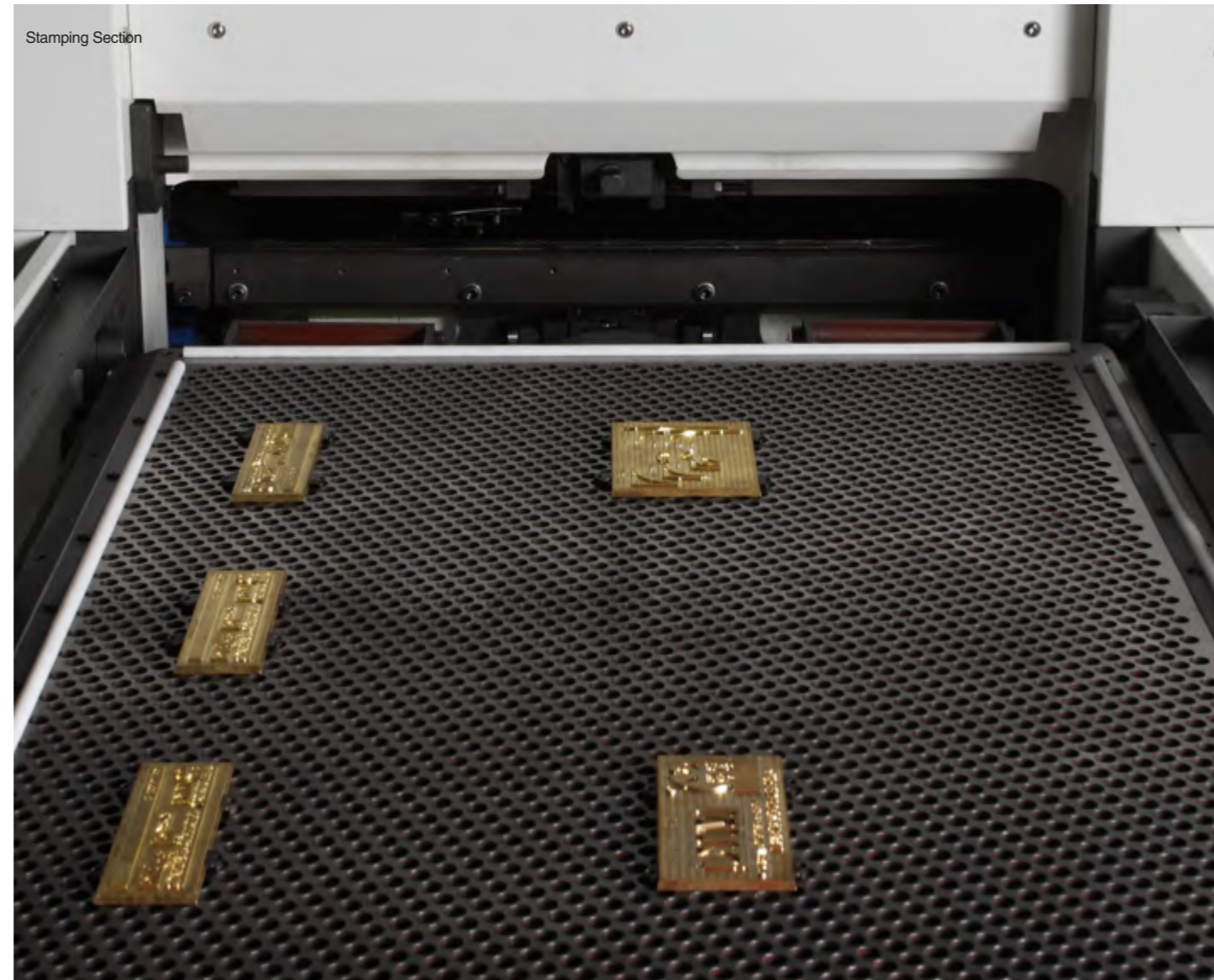


### Lower Supporting Plate

The lower plate is made with high-quality imported materials. The 3mm+1mm steel plates improve foiling and embossing make-ready times. The 1mm plate concept is ideal for repeat jobs and increase profitability. The lower plate is equipped with a fine adjustment and central registration system which reduces plate changing and positioning dramatically.

### Pneumatic Plate Locking Device

The MK pneumatic locking system (patent ZL200520026596.9) for the plate frameworks locks the plate framework automatically without the need for tools. This device gives a time saving benefit for the operator.



Stamping Section



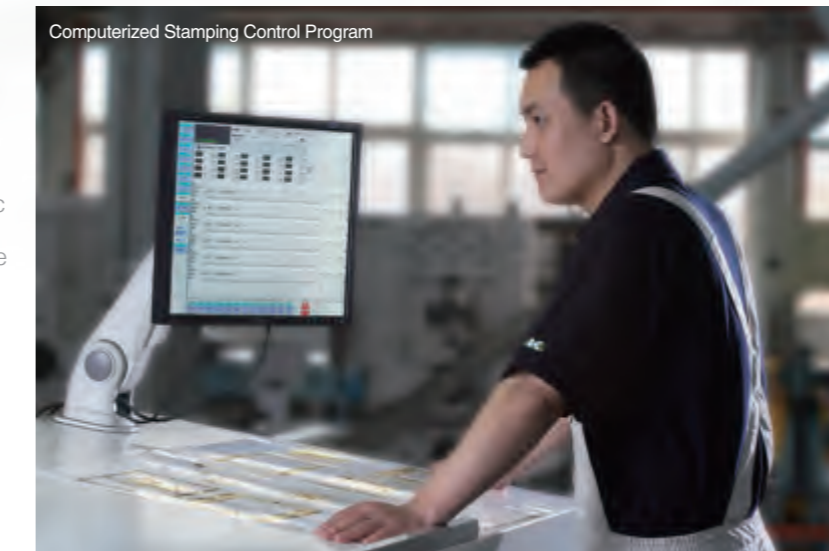
**Our Strive for Excellence Can Be Seen in This Latest Model. Customer Feedback Helped to Improve its Versatility**

**MK1060ST**  
Automatic Platen Foil Stamping and Die Cutting Machine

- Platen 
- Sheet-Fed 
- Die Cutting 
- Foil Stamping 

### Computerized Stamping Control Program

The VMP2005 stamping control program, working on Windows XP, was developed by Masterwork Machinery (intellectual property right: 2008SR05319). The man-machine interface has a user-friendly operation. All electric controls are designed in the program. The program can handle complex foil advance calculations. With the precise calculation, the program efficiently improves foil usage. The hologram foil stamping accuracy is  $\pm 0.2\text{mm}$ . The system accurately controls the foil advance devices, the system can feed foil from a 740mm maximum to a 1mm minimum even running at high speed.



Computerized Stamping Control Program

### Foil Advance System

The foil advance system consisting of 3 advance shafts (standard configuration) ensures the foil unwinds with an error tolerance of 1mm, which results in foil savings. The foil unwind unit is capable of maintaining a stable foil tension at high speed.



Longitudinal Servo Foil Feeding System

Technical Data		MK1060ST	
Max sheet size	1060mm x 760mm		
Min sheet size	400mm x 350mm		
Max die cutting size	1060mmx745mm		
Max stamping size	1060mmx740mm		
Gripper margin	9-17mm		
Inner chase size	1120mmx770mm		
Convertible stock	90-2000g/m <sup>2</sup> paper; 0.1-2mm paper; ≤4mm corrugated		
Max working force	260 tons		
Max working speed	7000s/h (stamping) 5500s/h (hologram stamping) 7500s/h (die cutting)		
Max feeder pile height	1250mm (wooden pallet included)		
Max delivery pile height	1050mm (wooden pallet included)		
Max diameter of foil roll in	φ 250mm (Longitudinal) / φ 200mm (Transversal)		
Die cutting accuracy	≤ ± 0.075mm (Die cutting and stamping) ≤ ± 0.20mm (Hologram stamping)		
Full load wattage	54.9KW		
Heating system	20 heating zones, -40-180°C Adjustable		
Width of the foil	20-1060mm		
Overall dimensions	6100mmx4560mmx2265mm (LxWxH)		
Air supply	0.6-0.7MPa, ≥0.8m <sup>3</sup> /min		
Net weight	About 20 tons		

To configure	● Standard configuration	○ Optional configuration
The high-speed feeder is adjusted with 4 lifting suction cups and 5 carrier suction cups	●	
Non-stop sheet feed system with high speed	●	
Non-stop sheet delivery system	● Manual ○ Pneumatic	
Single-position engagement clutch with high-performance	●	
Conveyor belt wide in width	●	
Vacuum feeding system	○	
Pneumatic side lay	○	
Imported torque restrainer	●	
Imported worm wheel and worm set products	●	
Pneumatic locking device	●	
Bi-directional pneumatic locking device	●	
3+1mm adjustable lower supporting plate	●	
Films fasten device	●	
Standard honeycomb chase	○	
Standard die-cutting chase	○	
Chase quick locking device	○	
Imported pneumatic clutch	●	
High precision transversal servo foil feeding system	●	
High precision longitudinal servo foil feeding system	●	
Foil unwind device	●	
Foil break detector	●	
Air blast foil separation system	●	
20 heating zones	●	
Central registration system	●	
Imported high speed indexing device	●	
Patent design gripper bar	●	
Automatic lubricating system	●	
CE certification	●	
Overload protector	●	
Mitsubishi PLC Q series	●	
Mitsubishi PLC FX series	—	
Chase preparation stand	○	
Pre-stacking device	○	
Pre-loading device	○	
Pre-stock device	●	
Used foil rewind device	○	
Hologram foil stamping	○	

Brochure content is only for reference, the machines please refer to the actual products.



Masterwork Machinery Co., Ltd was established in 1995. It is specifically established as a high technology manufacturer of print finishing equipment. On March 29th, 2012, Masterwork Machinery Co., Ltd has successfully listed on the stock exchange in Shenzhen, which lays a solid foundation for the company's further development.

At present, Masterwork Machinery Co., Ltd can be found in over 20 countries. The company has continuously given full play to the advantages in resource, technology and talents. It devotes itself to promoting the core business—manufacture of the printing & packaging equipment. The products have gained acceptance all over the world. Masterwork Machinery Co., Ltd has become one of the preferred suppliers for the solutions of the global print finishing equipment.

For one company and successful team, every step made is covered with sweat and smile. Hard forward and rain or shine is the promise made by MK, and its belief for the future. The past excellent performance has laid a solid foundation for MK's sustainable growth. MK hopes to achieve the bright future by the close co-operation with the business partner.

**USA**  
Masterwork USA Inc  
Address: PO Box 625, Budd lake, NJ 07828  
Tel: 973-691-8321  
Fax: 888-467-2293  
www.usa.com  
Email: sales@mkusa.com

**Thailand**  
MKM(Thailand) Co., Ltd.  
Address: 269/2 Soi Chock Chai Jong Cham Roen  
Rama 3 Road, Bangpoo, Bangkok 10120 Thailand  
Tel: 66-2-6823888  
Fax: 66-2-6823969

**Korea**  
Samwoo Co.  
Address: Rm 709, Uni-TechVil, 1141-2, Baeksu-Dong, Ilsan Dong-Gu,  
Goyang-Si, Kyungki-Do, Republic of Korea  
Tel: 82-31-9054841  
Fax: 82-31-9054844

**Turkey**  
Pasifik Ic ve Dis Ticaret ve Muresillik A.S.  
Address: 100. Yil Mah. Mas-Sit Matbaacilar Sitesi  
3. Caddesi No. 199/B Bagcilar 34204  
Istanbul - Turkey  
Tel: +90 212 432 7777  
Fax: +90 212 432 7799  
Email: pasifik@pasifiktrading.com.tr

**Ukraine**  
Polygraphimport Ltd., Upg  
Address: 02105, Ukraine Kiev, 5 Tampere Str  
Tel: 38-44-5010646  
Fax: 38-44-5010645/5590464

**Singapore**  
Kmlink Pte Ltd  
Address: 1 Syed Alwi Road, #04-01 Song Lin Building, Singapore 207628  
Tel: (65)63035433

**Brazil**  
RGM Comercio Importação e Exportação de Máquinas Ltda  
Address: Av. dos Bandeirantes, 2649  
04510-012 São Paulo - SP  
www.rgm-group.com.br

**Guatemala Costa Rica El Salvador**  
Gevi S.A.  
Address: 4a Avenida "A" 22-47 Zona 14, Guatemala, 01014, Guatemala C.A.  
Tel: 502-23667648  
www.grupogevisa.com



MASTERWORK MACHINERY CO., LTD.  
No. 11 Shuangchenzhonglu,  
Beichen Science and Technology Area,  
Tianjin, 300400, China  
Tel: 86 22 26978899 (Direct line) 86 22 26976666 (Operator)  
Fax: 86 22 26973430  
Website: www.mkmchina.com

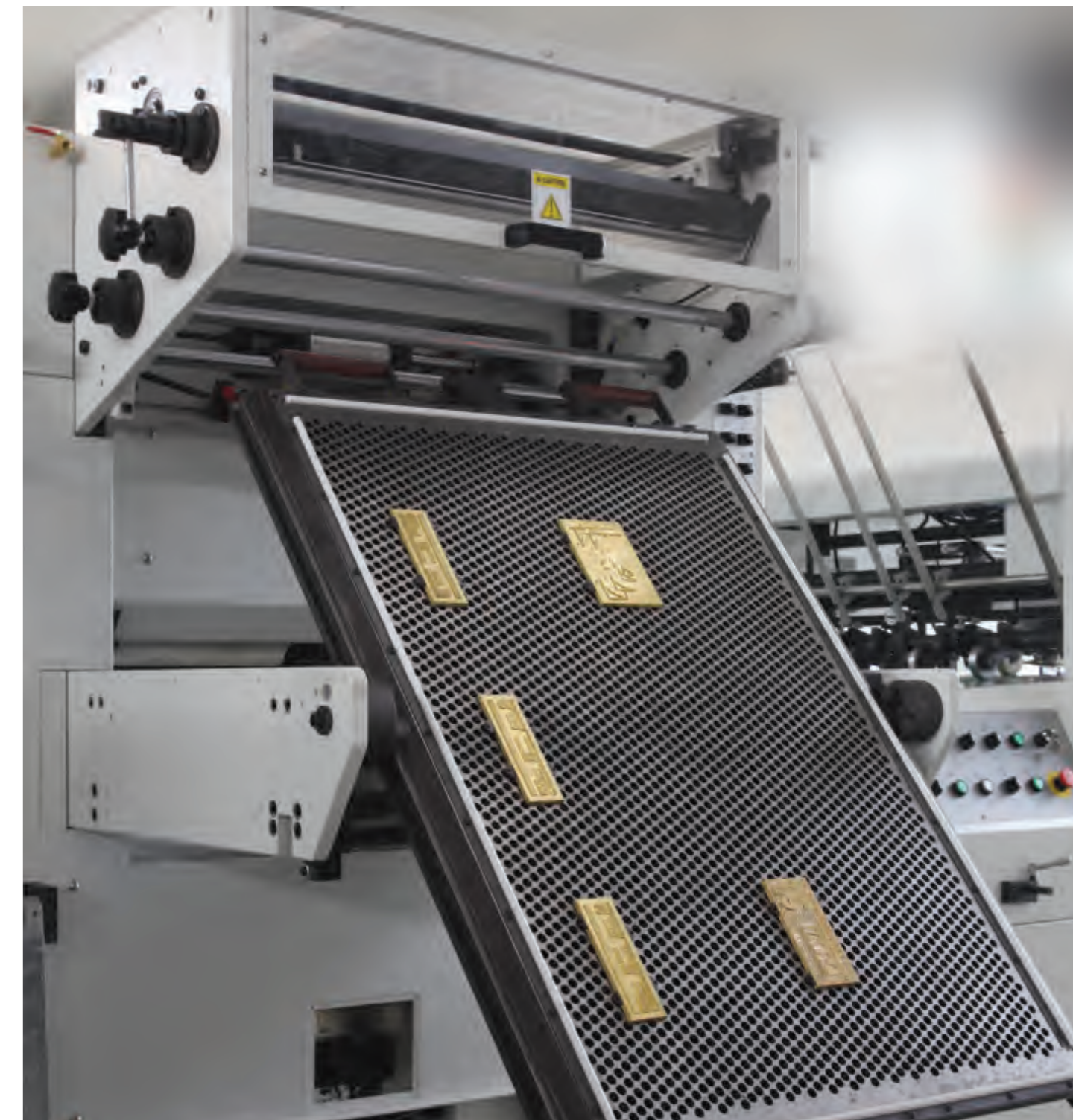


有恒·长荣  
Together & Better



Experience the Future

MK1060ST  
Automatic Platen Foil Stamping and Die Cutting Machine



Experience the Future

MK1060ST Automatic Platen Foil Stamping and Die Cutting Machine can handle large format die cutting and stamping with longitudinal and transversal foil pull systems. The advanced vacuum feed table (optional) can substantially enhance sheet feeding stability. A bank of electronic controls makes the feeder unit a more user friendly system and helps reduce the operator workload.

- Shorter time for replacing plates and adjustment
- User friendly operation
- More versatility
- More direct management
- Less consumable materials
- More stable operation
- More safety features
- Quick payback on investment

天津长荣印刷设备股份有限公司  
MASTERWORK MACHINERY CO., LTD.