

PORTFOLIO

DIAMONDMODULE[®]
UNIVERSAL UNIT SYSTEM

DIAMONDMODULE®
UNIVERSAL UNIT SYSTEM

THE UNIVERSAL DIAMONDMODULE SYSTEM OPENS UP A NEW DIMENSION IN BUILDING



TABLE OF CONTENTS

SOCIAL HOUSING

SOCIAL HOUSING 1340 - MUNICH / DE6

SOCIAL HOUSING 288 - MUNICH / DE26

SOCIAL HOUSING 440 - MECKENBEUERN / DE.....46

SOCIAL HOUSING 450 - FRANKFURT / DE54

PREMIUM HOUSES

HOUSE 45 - GDYNIA / PL.....62

HOUSE 75 - NEUDORF / AT80

HOUSE 105 - EUGENDORF / AT100

HOUSE 180 - EUGENDORF / AT110

PRODUCTION PROCESS

PRODUCTION FACILITIES122

STANDARDS & QUALITY137

SOCIAL HOUSING



DIAMOND MODULE®

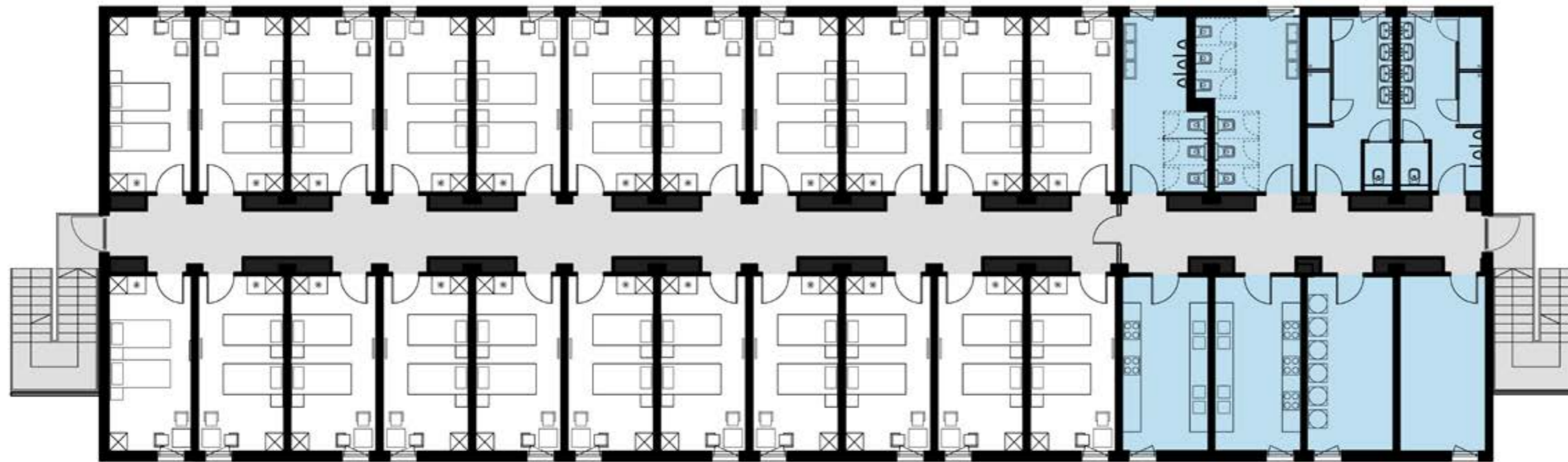
13440

A

WOHNHEIMSEDLUNG
11 - 48

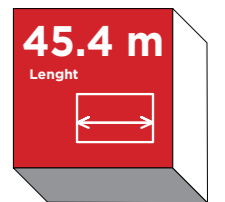
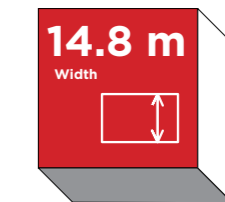
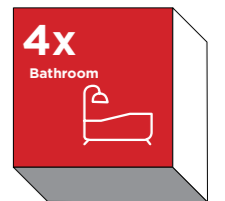
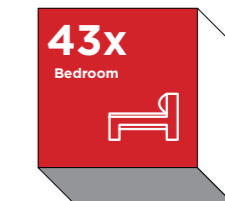
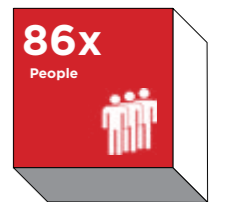
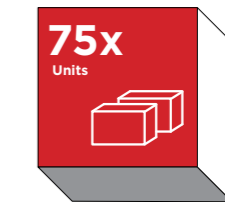
TER STR 98
1070/101
ACHUM

SOCIAL HOUSING 1340

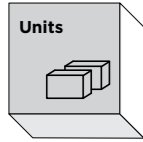
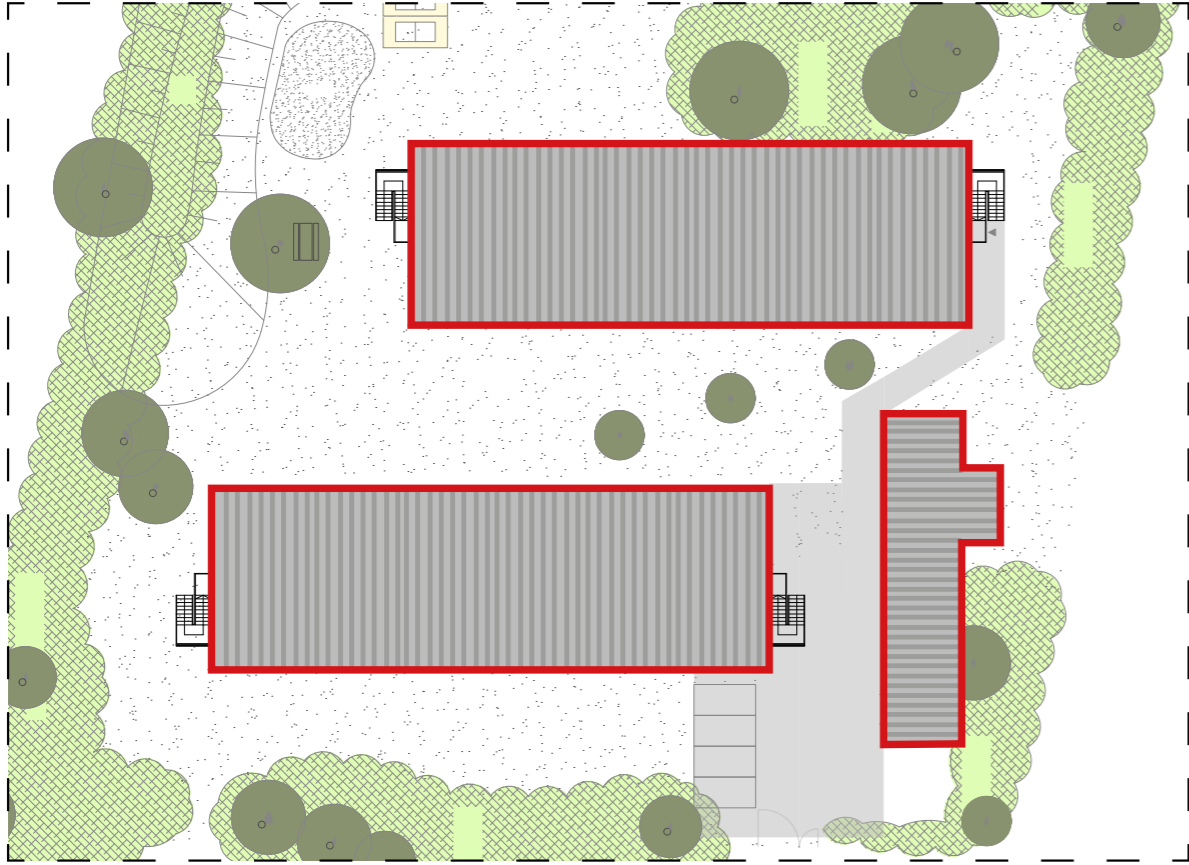


Modular Social Housing 1340 is a residential building, consisting of 75 modules with a total of 1340 m² gross floor area. Twin bed, 18 m² rooms share common bathrooms, kitchens and laundries located on each floor. A single room for a disabled person is situated on the ground floor.

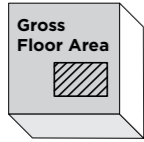
SPECIFICATION:



SOCIAL HOUSING 1340 - COMPLEX



160x



2800 m²

The complex comprises two 2-storey residential buildings (1340 m² each) and one office building. The complex has a total of 2800 m² gross floor area and is made of 160 modules.















DIAMONDMODULE®

288



SOCIAL HOUSING 288

The Social Housing 288 building (16 modules), is a semi-collective housing designed to host 4 families up to 8 people each.

Every apartment contains two bedrooms, two bathrooms and a spacious living room with a kitchen with 72m² floor space in total.

SPECIFICATION:

16x
Units

36x
People

8x
Bedroom

8x
Bathroom

12.3 m
Width

14.6 m
Length








72 m²
Gross Floor Area
(Apartment)

288 m²
Gross Floor Area
(Building)

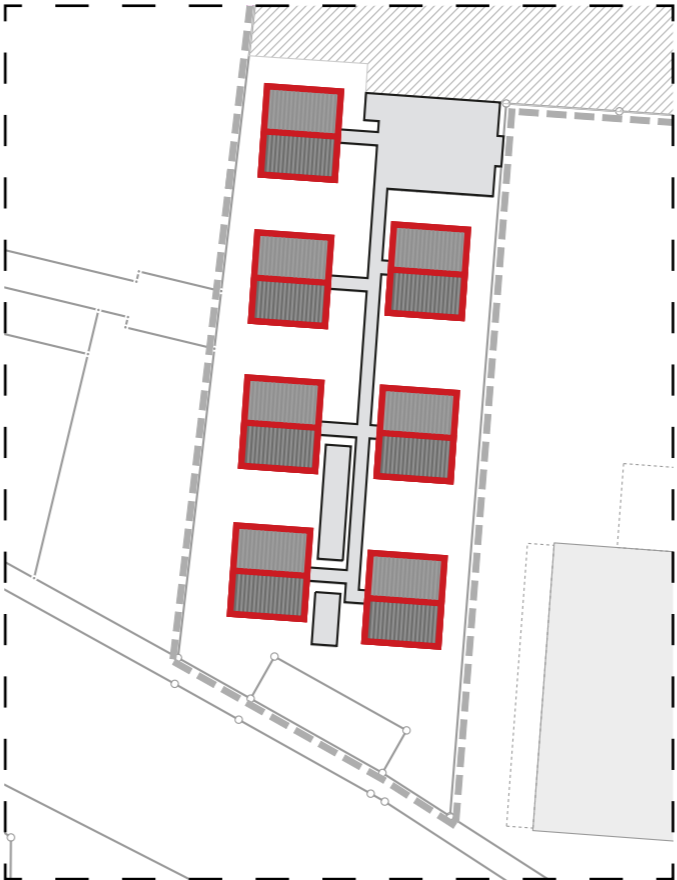
SOCIAL HOUSING 288 - COMPLEXES



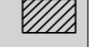

ISMANING



Buildings 	Units 	Gross Floor Area 
6x (1x  5x )	88x	1584 m ²



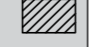


TAUFKIRCHEN



Buildings 	Units 	Gross Floor Area 
7x (7x )	112x	2016 m ²






STARNBERG



Buildings 	Units 	Gross Floor Area 
4x (3x  1x )	40x	720 m ²

GRÄFELFING



Buildings 	Units 	Gross Floor Area 
7x (1x  6x )	104x	1872 m ²





Amica











DIAMONDMODULE®

4440



SOCIAL HOUSING 440

Modular Social Housing 440, multi-family building for 44 people. The building consists of 32 modules with a total of 440 m² gross floor area. Twin or triple bed rooms share bathrooms and WC in the same quarter. Kitchen, with a community dining table are in separate rooms for each quarter.

SPECIFIKATION:

32x
Units

44x
People

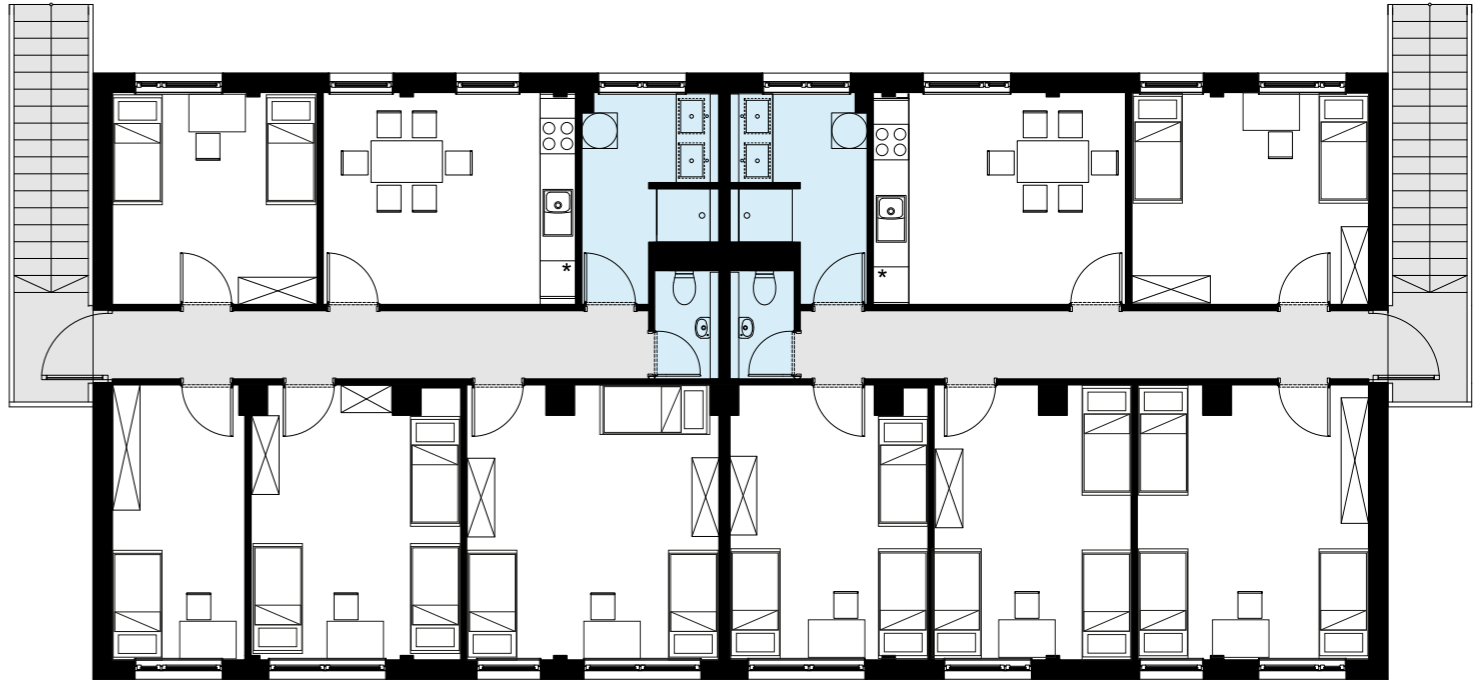
16x
Bedroom

4x
Bathroom

10.2 m
Width

21.8 m
Lenght

440 m²
Gross Floor Area
(Building)









450

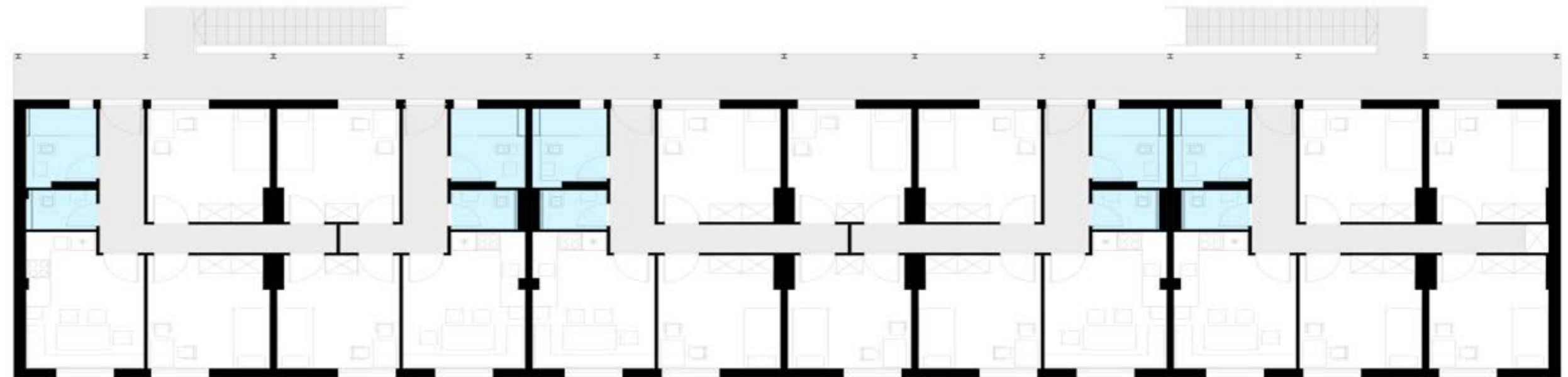
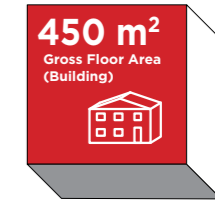
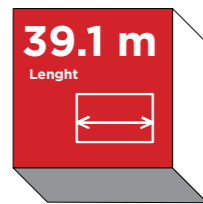
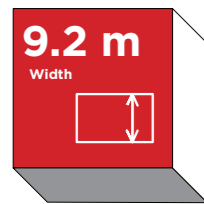
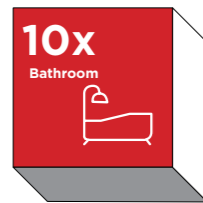
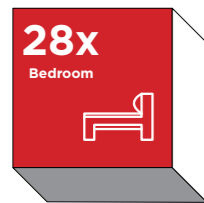
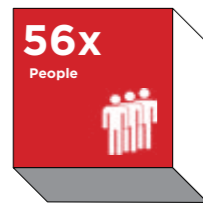
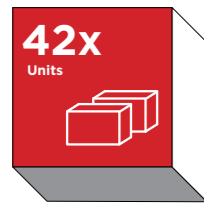
DIAMONDMODULE®

SOCIAL HOUSING 450

Modular Social Housing 450 is a residential building, consisting of 42 modules with a total of 450 m² gross floor area.

Four bed, 24 m² rooms share bathrooms in the same part of the building, connected with a single corridor. Kitchens with dining tables are located in separate rooms. Community rooms are located in the ground floor.

SPECIFIKATION:





PREMIUM HOUSES



DIAMONDMODULE®

45

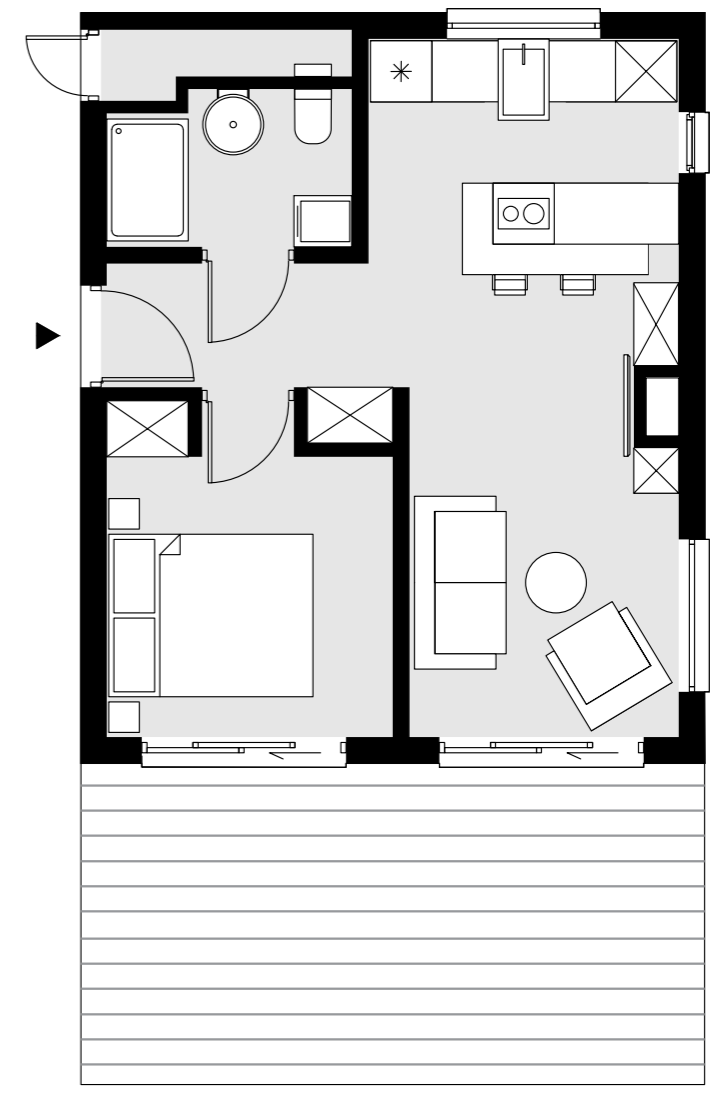


HOUSE 45

The 45 House (3 modules) with a compact 45 m² footprint has a craftfully arranged interior filled with modern furniture and appliances.

Fully furnished double bedroom, bathroom, living room and a kitchen make a perfect permanent or vacation home.

<p>3x Units</p>	<p>2x People</p>
<p>1x Bedroom</p>	<p>1x Bathroom</p>
<p>6.1 m Width</p>	<p>7.4 m Length</p>



45 m²
Gross Floor Area

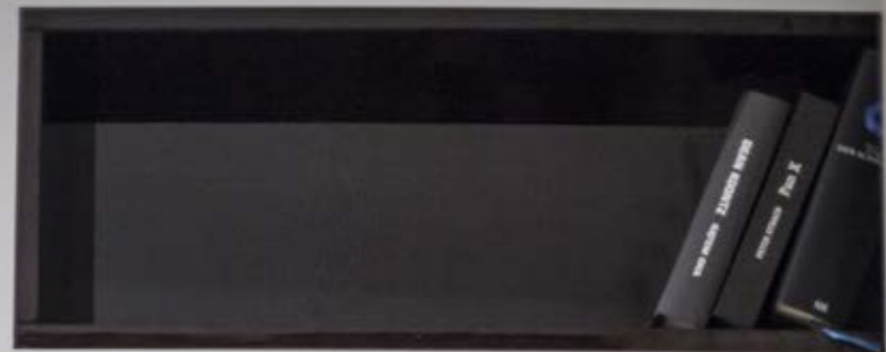














DIAMONDMODULE®

75



HOUSE 75

The 75 House (5 modules) is designed as a medium-size (75 m²) home for a family of three.

Apart from its spacious living space with a kitchen, two (double and single) bedrooms and a bathroom it contains also a small storage space. All rooms are fully furnished.

5x
Units

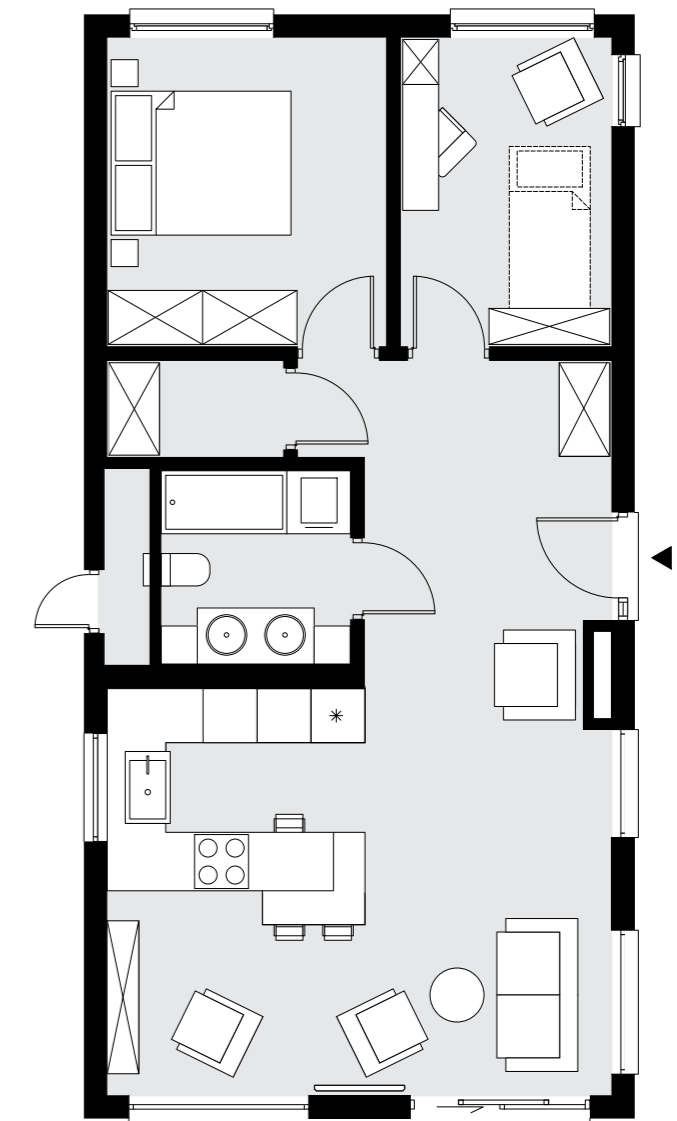
3x
People

2x
Bedroom

1x
Bathroom

6.1 m
Width

12.3 m
Length



75 m²
Gross Floor Area















DIAMONDMODULE®

105



HOUSE 105

The 105 House (7 modules) is a comfortable 105 m² space for three or four inhabitants. Significantly enlarged living area is composed of a spacious kitchen with a separate dining table and a living room with direct access to a garden. The toilet is separated from the bathroom by a sliding door.

7x
Units

4x
People

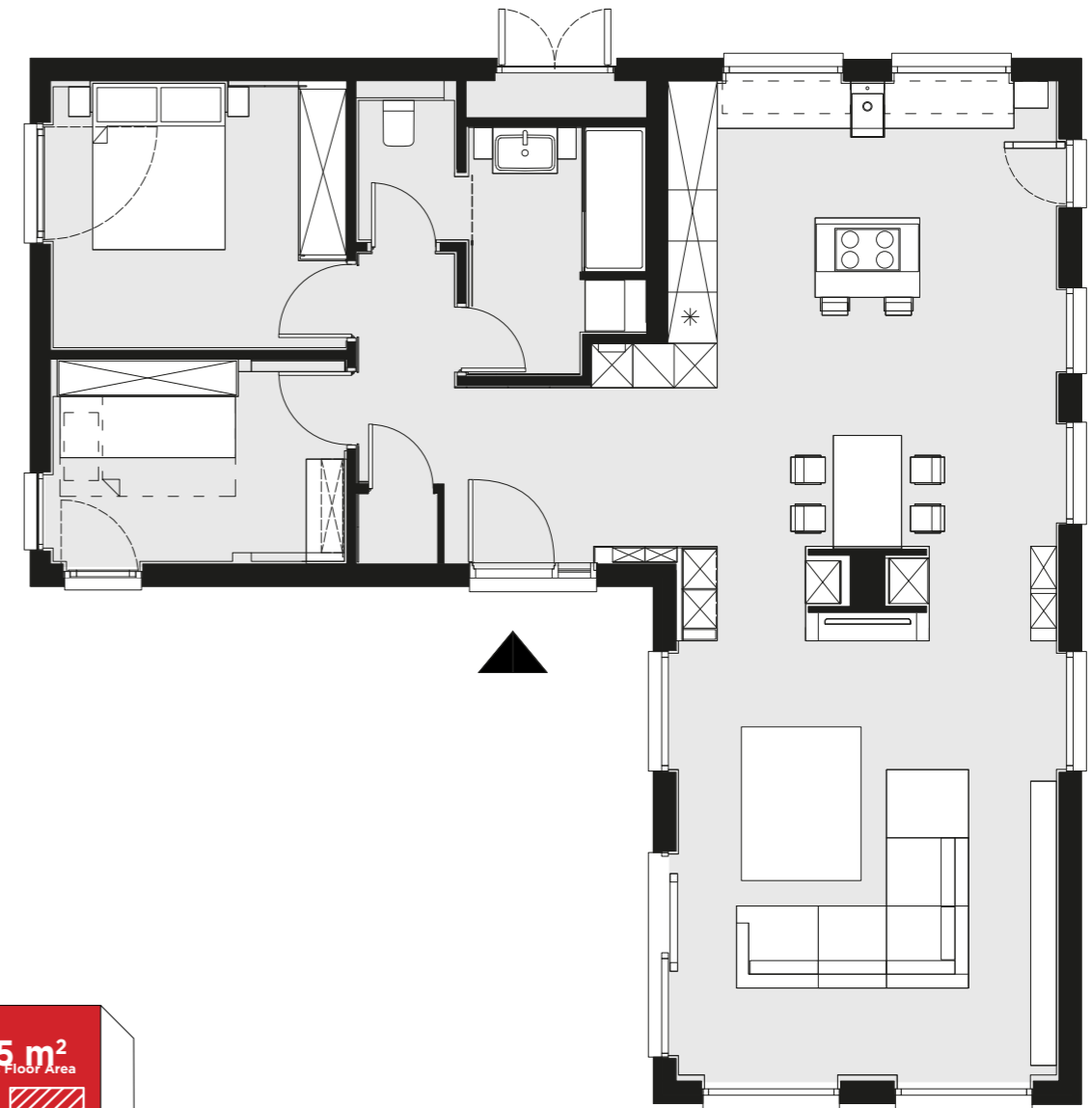
2x
Bedroom

1x
Bathroom

12.3 m
Width

12.3 m
Length

105 m²
Gross Floor Area











ZE
ZEHENTNERHAUS
18
HILF TRAUMER

DIAMONDMODULE®

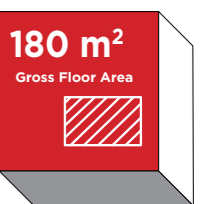
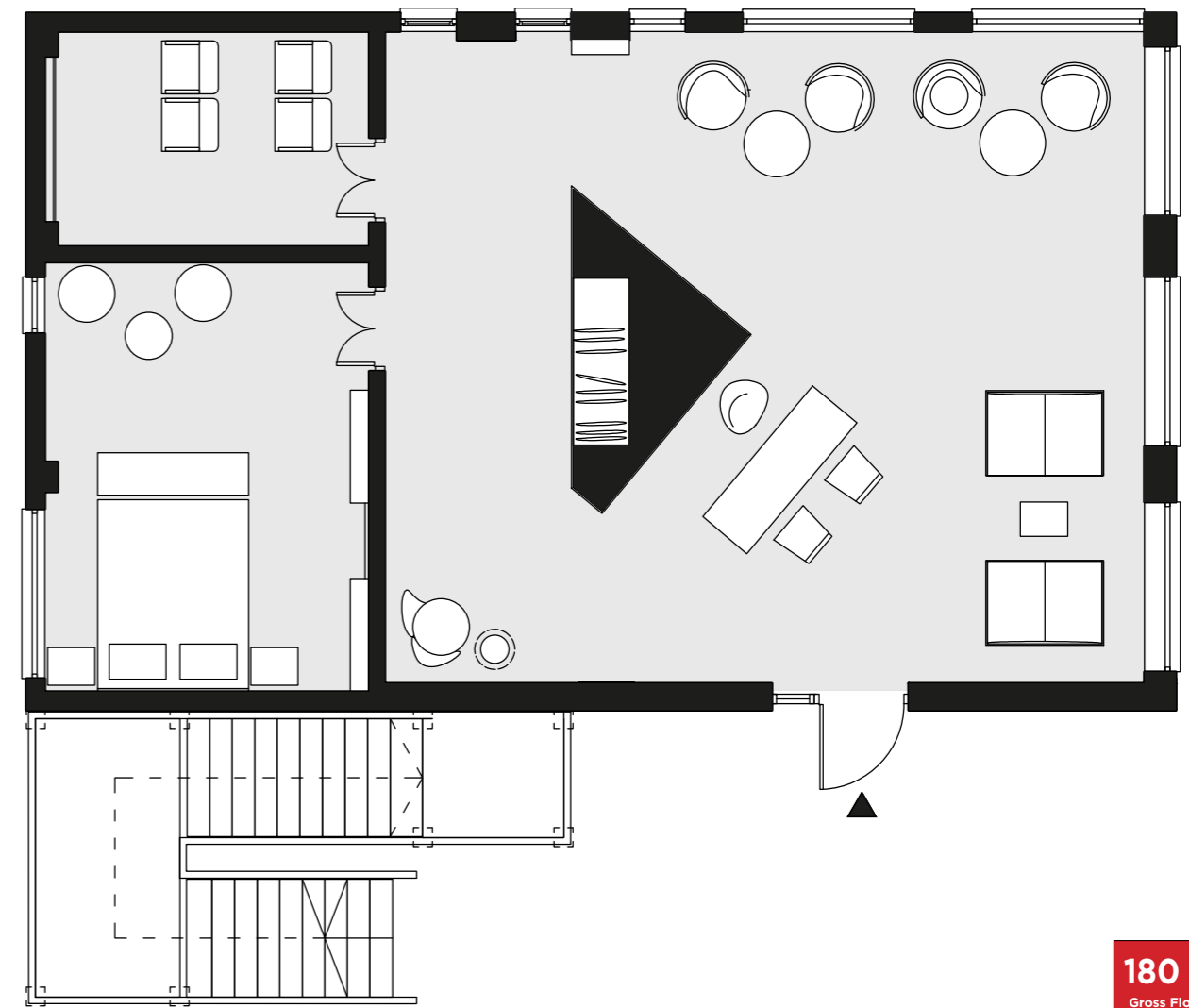
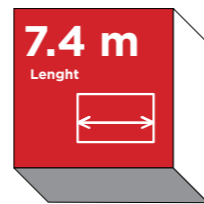
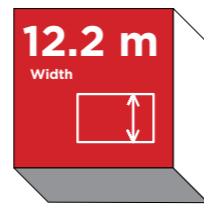
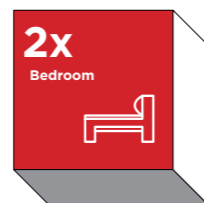
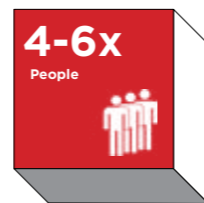
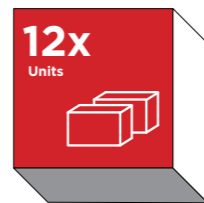
180

HOUSE 180

The 180 House (12 modules) is a comfortable 180 m² space for four to six inhabitants.

The realized building suits as a showroom, containing key functions, like: reception, bedroom, home-theater, bathroom, bedroom with desk, kitchen, conference room.

However the space can be arranged based on the customers desire.









PRODUCTION PROCESS





DIAMOND MODULE







STANDARDS & QUALITY

European Technical Assessment ETA - 14/0466

The European Technical Assessment (ETA) is a document providing information about the performance of a construction product, to be declared in relation to its essential characteristics. This definition is provided in the new Construction Products Regulation (EU/305/2011) entered into force on 1st of July 2013 in all European Members States and in the European Economic Area.



Certificate of Constancy of Performance 1488-CPR-0499/W,
according to the innovative ETA-14/0466 standard.



EnEV 2014 - (Energieeinsparverordnung) Energy Saving Regulation



The classification of fire resistance, according to PN-EN 13501-2+A1:2010

Exterior walls

The impact from the outside to the inside	RE 90
The impact from the outside to the inside	REI 60
The impact from the inside to the outside	REI 60
Interior walls (load bearing)	REI 60

Soundproofing

Interior walls/Hallways	52 dB
Doors	37-42 dB



Eugendorf

Musterhauspark 1
5301 Eugendorf
Parc. 7 + 15

Haid

IKEAplatz 9
4053 Linz-Haid
Parc. 25

Blaue Lagune

Mariahilfer Straße 84
A-1070 Wien
Parc. 24

München

HT 1340
Waldmeisterstr. 98
80935 München

HT288 - Dorf 1
Neurieder Weg / Großhadernerstr.
82166 Gräfelfing

HT 288 - Dorf 2
Krautgartenstraße
85737 Ismaning

HT 288 - Dorf 3
Köglweg
82024 Taufkirchen

HT 288 - Dorf 4
Fürstenrieder Straße
82152 Planegg



DiamondModule Vertriebs GmbH

e-mail: contact@diamondmodule.info
www.diamondmodule.info