



**W A T E R F R O N T**

**M A N U F A C T U R I N G L T D**

*C O R P O R A T E , U N I F O R M & W O R K C L O T H I N G*

T: 01953 718719 F: 01953 718778

E: [sales@waterfrontmanufacturing.co.uk](mailto:sales@waterfrontmanufacturing.co.uk)

W: [www.waterfrontmanufacturing.co.uk](http://www.waterfrontmanufacturing.co.uk)

**EUROPA**  
CLUBCLASS • CORPORATE CLOTHING

Price included towards the back  
All prices subject to VAT



**europa**  
CLUBCLASS • CORPORATE CLOTHING

## what is the Europa Collection?

- Europa is a sophisticated, lightweight collection of mix & match tailored suiting for professionals who require modern clothing that works.
- If you want the ultimate in sophisticated corporate tailoring and can afford to spend that little bit more to get it; choose the Europa collection for your business.
- The Europa collection is made from a fine Bi-Stretch (stretches both ways giving you the full benefit of Lycra) Poly/Wool/Lycra fabric that performs at work.
- A 11 piece collection with contemporary and classic pieces to suit all wearers. Choose from 3 ladies' jackets, 2 trousers, 2 skirts. Menswear available in 2 & 3 button jackets with pleated and flat front trousers. Available in 3 colours – Navy, Navy Multi-stripe and Charcoal.

The Europa Collection is the choice of professional staff who want to look and feel fabulous at work! The highest quality corporate tailoring available in Europe.

## technical information

**Fabric: 53% Polyester / 43% Wool / 4% Lycra Bi-Stretch**  
(Stretches both ways giving you the full benefit of Lycra unlike many of our competitors who will offer you a weft, one way only, stretch)

**Weight: 280 grams per linear metre**  
(Light-weight & machine washable)

**Durable: 40,000+ martindale test. Grade 4/5 pilling.**  
(Will look good after days and months of wear in the right environment)

**Aftercare: Machine Washable or Dry Clean**  
(Convenient & cost effective)

**Proven fabric: 1000's of wearers with no complaints**  
(Peace of mind; you are buying clothing with a great track record from a company with experience)

Fabric meets **Oeko-Tex Standard 100**

The Europa Collection is available from Europe's leading suppliers of Corporate Clothing. Ask their advice when selecting suitable clothing for work.

# The Europa Collection

## men's P6/7/8/9



£86.50

MILAN Single breasted jacket, 2 Button fastening, Centre vent, Feature lining. Machine washable



£84.50

BERLIN Single breasted jacket, 3 Button fastening, Side vents, Feature lining. Machine washable



£39.50

GENEVA Flat front, French bearer, 2 Hip pocket, 1/2 Lined. Machine washable



£39.50

BONN Single pleat, French bearer, 2 Hip pocket, 1/2 Lined. Machine washable

## ladies' P12/13/14/15/16/17



£80.95

MADRID Single breasted jacket, 2 Button fastening, Tulip lapel, Feature lining. Machine washable



£80.95

PARIS Single breasted jacket, 2 Button fastening, Notch lapel, Feature lining. Machine washable



£80.95

ROME Single breasted jacket, Classic fit, 3 Button fastening, Feature lining. Machine washable



£35.95

LONDON Front fastening, Parallel leg, Belt loops, Cash pocket & feature lining, Deep waistband. Machine washable



£35.95

GALWAY Front fastening, Flared leg, Belt loops, Cash pocket & feature lining waistband. Machine washable



£32.50

VIENNA Pencil skirt, Front seam detail, Rear centre vent. Machine washable



£35.95

PRAGUE Longline skirt, Front and rear vent. Machine washable

**All jackets trouser and skirts are mix & match. Choose your jacket then select a trouser/skirt to match.**

Full details of options available including colour, size etc are on pages 18/19/20

**\*\*ALL PRICES SUBJECT TO VAT\*\***



**EUROPA**  
CLUBCLASS • CORPORATE CLOTHING

## attention to detail

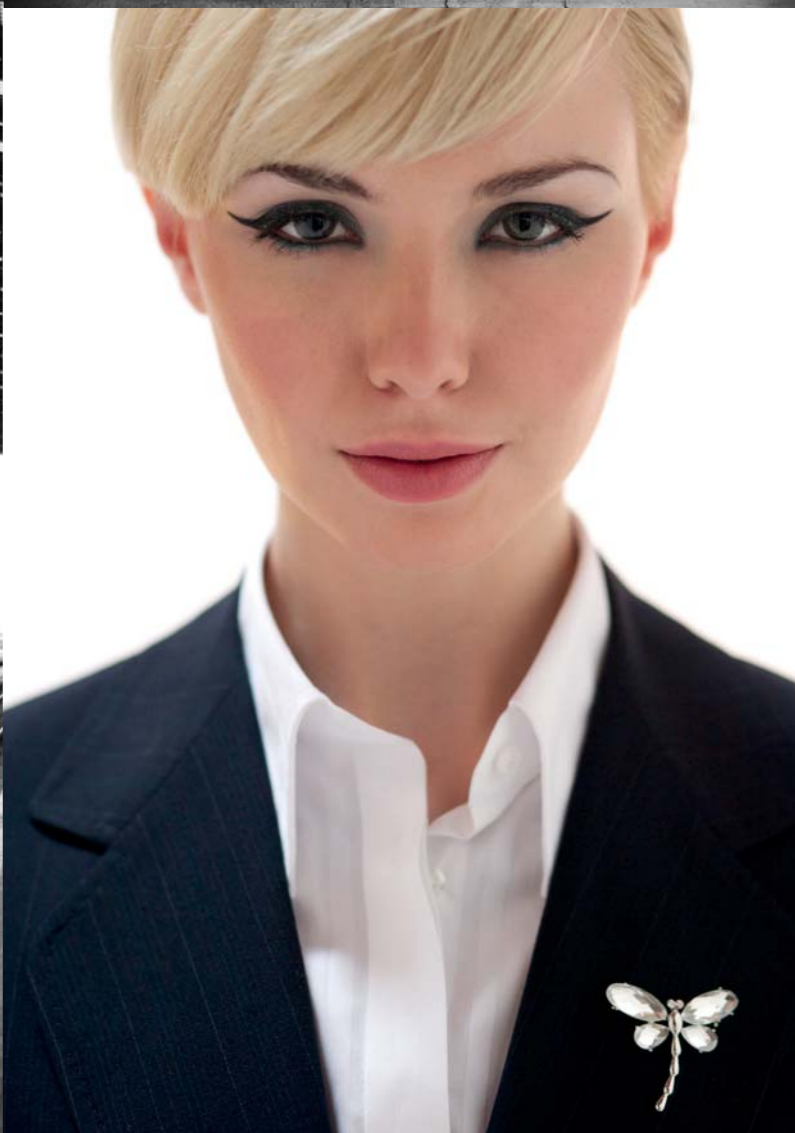
The Europa Collection is tailored from a fine Bi-Stretch fabric. A fabric made from fine wool, mixed high tech Polyester and Lycra for shape retention and crease shedding properties. A brilliant garment technician produced all new jacket patterns for men & women concentrating on fit and ease of movement when working. We added great trouser styles that fit and are great to work in.

We used a higher grade of trim (lining, buttons, internal canvas, chest piece and shoulder pads) than would normally be used in corporate tailoring. We even made sure we put the internal pockets onto fabric inserts rather than directly onto the lining, because it is better and stronger and we believe it is attention to detail that sets the best apart.

The Europa collection is one of four great collections from Clubclass. It complements the Statement, Evolution and Endurance collections; one of these collections is right for your business.

All four collections are available from the best corporate clothing suppliers in Europe. Please ask for their advice when selecting the right collection for your workplace.

We leave nothing to chance in providing the quality, detail and finish expected by you.





P6

MILAN Jacket  
Single breasted jacket,  
2 Button fastening,  
Side vents, Out ticket pocket,  
Feature lining.  
Machine washable

GENEVA Trousers  
Flat front, French bearer,  
2 Hip pocket, 1/2 Lined.  
Machine washable

tous les hommes

Sizing and fabric options for all men's jackets and trousers see page 20



P7



BERLIN Jacket  
Single breasted jacket,  
3 Button fastening,  
Centre vent,  
Feature lining.  
Machine washable

BONN Trousers  
Single pleat, French bearer,  
2 Hip pocket, 1/2 Lined.  
Machine washable

funktio<sup>n</sup>





wonderful, modern,  
corporate clothing



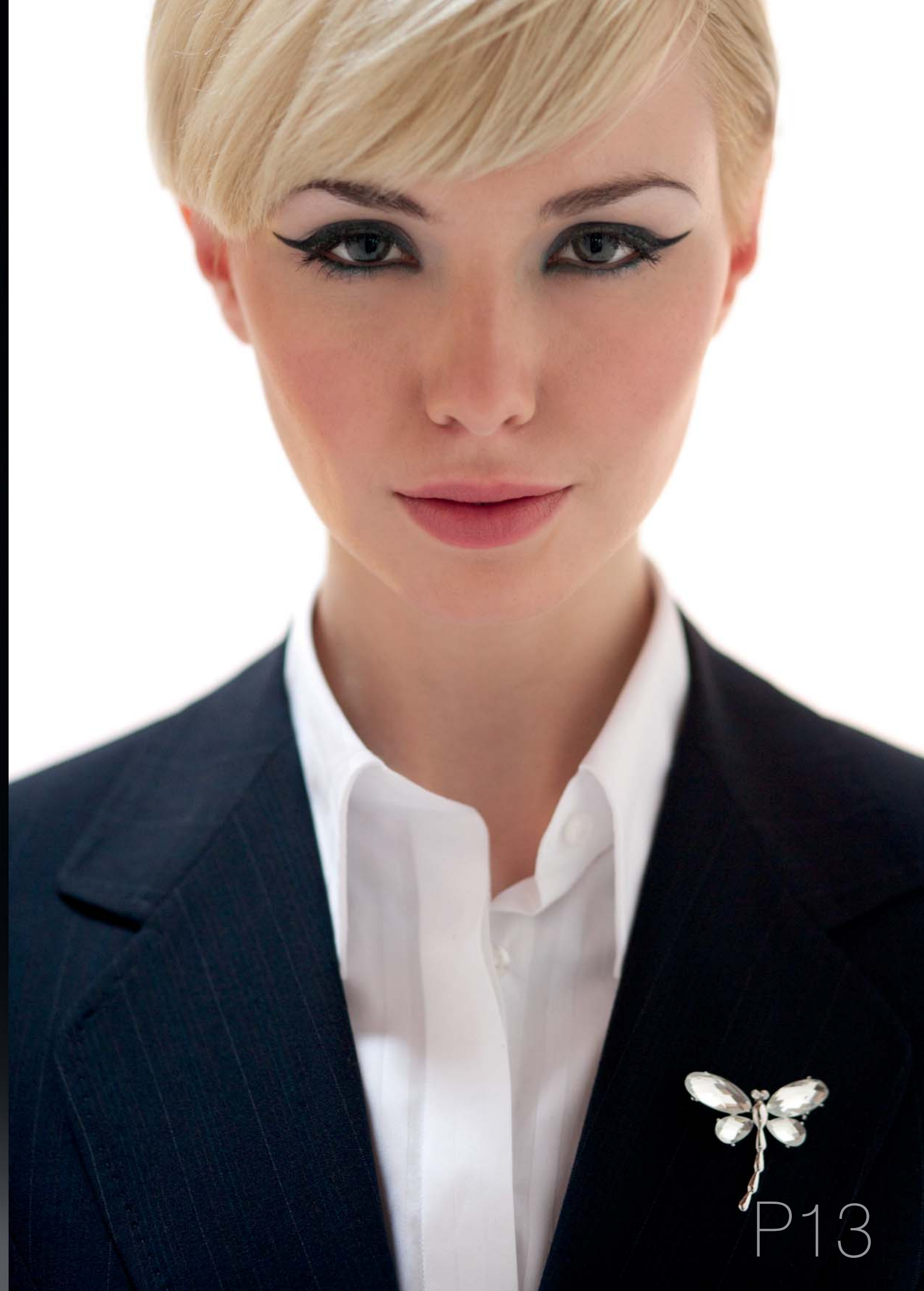
# le bella f<sup>★</sup>orme

MADRID Jacket  
Single breasted jacket,  
2 Button fastening,  
Tulip lapel, 4 Panel back detail,  
Feature lining.  
Machine washable

GALWAY Trouser  
Front fastening, Flared leg,  
Belt loops, Cash pocket &  
Feature lining waistband.  
Machine washable

P12

Sizing and fabric options for all ladies' jackets, trousers & skirts see pages 18 & 19



P13





# superior

PARIS Jacket  
Single breasted jacket, Fitted style,  
2 Button fastening, Notch lapel,  
Styled back panel detail,  
Feature lining. Machine washable

VIENNA Trouser  
Pencil skirt, Front seam detail,  
Rear centre vent. Machine washable

For PRAGUE longline skirt see page 19

Sizing and fabric options for all ladies' jackets, trousers & skirts see pages 18 & 19

collectivo

ROME Jacket  
Single breasted jacket,  
Classic fit,  
3 Button fastening,  
4 Panel back detail,  
Feature lining,  
Machine washable

LONDON Trousers  
Front fastening,  
Parallel leg,  
Belt loops,  
Cash pocket,  
2 Feature hip pockets,  
Low waist,  
Deep waistband with  
feature lining,  
Machine washable



# collection overview

## A look at all the options in one easy fold out spread

- These 3 pages simply show you what styles are available in the Europa Collection.

The photographs and detail will help you decide which style is right for you. If you need further help please phone your professional supplier who will offer guidance on how to select the right clothes for your work place.

- Choose from one of 3 ladies' jackets and 2 men's jackets and select from the skirts and trousers that match in either Navy, Navy Multi-stripe or Charcoal.
- The size range available for each style is shown at the foot of the page.

As a guide: Petite (Women under 5'2". Men under 5' 6" tall), Regular (Women between 5'3" and 5'9" and Men between 5'7" and 6'1" tall) and Long (Women over 5'10". Men over 6'1" tall). Sizes outside of this are made to order and take 6-8 weeks.

- All styles are machine washable and come with comprehensive care instructions.
- We hope you enjoy wearing these high quality tailored clothes at work.

Ladies' MADRID Jacket  
Single breasted jacket,  
2 Button fastening, Tulip lapel,  
4 Panel back detail,  
Feature lining. Machine washable

**Codes & Colours:**

J4000C Charcoal  
J4000N Navy  
J4000S Navy Multi Stripe

**Price: £80.95**  
**(22+: £92.95)**



Ladies' LONDON Trouser  
Front fastening, Parallel leg,  
Belt loops, Cash pocket,  
2 Feature hip pockets,  
Low waist, Deep waistband  
with feature lining.  
Machine washable

**Codes & Colours:**

T4006C Charcoal  
T4006N Navy  
T4006S Navy Multi Stripe

**Price: £35.95**  
**(22+: £41.50)**



Ladies' GALWAY Trouser  
Front fastening, Flared leg,  
Belt loops, Cash pocket &  
Feature lining waistband.  
Machine washable

**Codes & Colours:**

T4007C Charcoal  
T4007N Navy  
T4007S Navy Multi Stripe

**Price: £35.95**  
**(22+: £41.50)**



**Ladies' Madrid Jacket Sizes:**

6 to 24 Regular  
6 to 16 Petite  
8 to 24 Long

**Ladies' Madrid Jacket EU Sizes:**

34 to 52 Regular  
34 to 44 Short  
36 to 52 Long

**Ladies' Trouser Sizes:**

6 to 24 Regular 31" inside leg  
6 to 24 Petite 29" inside leg  
6 to 24 Long 33" inside leg  
6 to 24 Un/Finished 37" inside leg

**Ladies' Trouser EU Sizes:**

6 to 24 Regular 79cm inside leg  
6 to 24 Petite 74cm inside leg  
6 to 24 Long 86cm inside leg  
6 to 24 Un/Finished 94cm inside leg

# The Europa Collection

## Ladies' PARIS Jacket

Single breasted jacket, Fitted style, 2 Button fastening, Notch lapel, Styled back panel detail, Feature lining. Machine washable

### Codes & Colours:

J4002C Charcoal  
J4002N Navy  
J4002S Navy Multi Stripe

### Sizes:

6 to 18 Regular  
6 to 16 Petite  
8 to 16 Long

### EU Sizes:

34 to 46 Regular  
34 to 44 Petite  
36 to 44 Long

Price: £80.95  
(22+: £92.95)



## Ladies' ROME Jacket

Single breasted jacket, Classic fit, 3 Button fastening, 4 Panel back detail, Feature lining. Machine washable

### Codes & Colours:

J4001C Charcoal  
J4001N Navy  
J4001S Navy Multi Stripe

### Sizes:

6 to 24 Regular  
6 to 16 Petite  
8 to 24 Long

### EU Sizes:

34 to 52 Regular  
34 to 44 Petite  
36 to 52 Long

Price: £80.95  
(22+: £92.95)



## Men's MILAN Jacket

Single breasted jacket, 2 Button fastening, Side vents, Feature ticket pocket, Feature lining. Machine washable

### Codes & Colours:

J7000C Charcoal  
J7000N Navy  
J7000S Navy Multi Stripe

### Sizes:

36 to 50 Regular  
38 to 48 Short  
38 to 48 Long

### EU Sizes:

46 to 60 Regular  
48 to 58 Short  
48 to 58 Long

Price: £86.50  
(46+: £99.50)



## Men's BERLIN Jacket

Single breasted jacket, 3 Button fastening, Centre vent, Feature lining. Machine washable

### Codes & Colours:

J7001C Charcoal  
J7001N Navy  
J7001S Navy Multi Stripe

### Sizes:

36 to 54 Regular  
38 to 48 Short  
38 to 48 Long

### EU Sizes:

46 to 64 Regular  
48 to 58 Short  
48 to 58 Long

Price: £84.50  
(46+: £97.50,  
54+: £105.65)



## Ladies' VIENNA Skirt

Pencil skirt, Front seam detail, Rear centre vent. Machine washable

### Codes & Colours:

S4004C Charcoal  
S4004N Navy  
S4004S Navy Multi Stripe

### Sizes:

6 to 24 Regular 23" length  
6 to 24 Long 25" length

### EU Sizes:

34 to 52 Regular 60cm length  
34 to 52 Long 65cm length

Price: £32.50  
(22+: £37.50)



## Ladies' PRAGUE Skirt

Longline skirt, Front and rear vent. Machine washable

### Codes & Colours:

S4005C Charcoal  
S4005N Navy  
S4005S Navy Multi Stripe

### Sizes:

6 to 24 Regular 34" length

### EU Sizes:

34 to 52 Regular 88cm length

Price: £35.95  
(22+: £41.50)



## Men's GENEVA Trousers

Flat front, French bearer, 2 Hip pocket, 1/2 Lined. Machine washable

### Codes & Colours:

T7002C Charcoal  
T7002N Navy  
T7002S Navy Multi Stripe

### Sizes:

28 to 50 Regular 31" inside leg  
28 to 50 Short 29" inside leg  
28 to 50 Long 33" inside leg  
28 to 50 Un/Finished 37" inside leg

### EU Sizes:

44 to 66 Regular 79cm inside leg  
44 to 66 Short 74cm inside leg  
44 to 66 Long 84cm inside leg  
44 to 66 Un/Finished 94cm inside leg

Price: £39.50  
(46+: £45.50)



## Men's BONN Trousers

Single pleat, French bearer, 2 Hip pocket, 1/2 Lined. Machine washable

### Codes & Colours:

T7002C Charcoal  
T7002N Navy  
T7002S Navy Multi Stripe

### Sizes:

28 to 50 Regular 31" inside leg  
28 to 50 Short 29" inside leg  
28 to 50 Long 33" inside leg  
28 to 50 Un/Finished 37" inside leg

### EU Sizes:

44 to 66 Regular 79cm inside leg  
44 to 66 Short 74cm inside leg  
44 to 66 Long 84cm inside leg  
44 to 66 Un/Finished 94cm inside leg

Price: £39.50  
(46+: £45.50)

