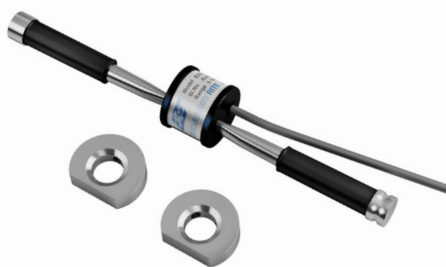


STRAIN GAGE



Model EDS-20V-AW Vibrating Wire Arc Weldable Strain Gage

EDS-20V-AW vibrating wire strain gage can be arc welded on steel structures and reinforced bars for measurement of stress in tunnel lining, surge shafts, piles, struts and diaphragm walls, etc. Two annular mounting blocks are provided for arc welding the strain gage. Groutable reinforced bar annular mounting blocks are also available for surface mounting the strain gage to a concrete structure. The sensor is of stainless steel construction, and has waterproofing to prevent any ingress of water.

SPECIFICATIONS

Range	3000 μ strain
Sensitivity	1 μ strain
Active gage length	150 mm
Thermistor	YSI 44005 or equivalent
Temperature limit	-20° to 80° C
Size l x b x h (mm)	174 x 28.5 x 30
Cable	Four-core shielded 1 m long; specify



Model EDS-20V-E Vibrating Wire Embedment Strain Gage

EDS-20V-E vibrating wire strain gage is suitable for embedment in soil or concrete. It is used to measure strain in underground cavities, tunnels, buildings, concrete and masonry dams etc. Waterproofing is provided on the strain gage sensor to prevent ingress of water.

SPECIFICATIONS

Size l x b x h (mm)	170 x 28.5 x 30
---------------------	-----------------

Other specifications same as EDS-20V-AW



Model EDS-11V Hermetically Sealed Vibrating Wire Strain Gage

EDS-11V is a very sturdy and robust high reliability strain gage suitable for embedment in mass concrete or for surface mounting by welding on steel structures. The sensor is electron beam welded, generating a vacuum of 1/1000 Torr inside the sensor. This eliminates any effect of oxidation, moisture and ingress of water. Accessories available include spider for stain rosette, no stress strain container, dummy strain gage and extender

SPECIFICATIONS

Range	$\pm 1500 \mu$ strain
Sensitivity	1μ strain
Active gage length	140 mm
Thermistor	YSI 44005 or equivalent
Temperature limit	-10° to 80° C
Protection	IP 68
Cable connection	Glass to metal seal solder pin connector



Model EDS-12V Vibrating Wire Sister Bar Strain Meter

EDS-12V vibrating wire sister bar is used to measure strain in concrete structures such as piles, diaphragm/slurry walls, bridge abutments, tunnel lining, dams, foundations, etc. It consists of a hollow bar with vibrating wire strain gage mounted co-axially inside. The hollow bar is extended on the two sides with 12 mm f reinforced bars. Sister bar strain meter is also available with 16 mm f reinforced bar option.

SPECIFICATIONS

Range	2500 μ strain
Sensitivity	1μ strain
Maximum Φ x l (mm)	26 x 1400 (for 12 mm Φ nominal-standard) 30 x 1400 (for 16 mm Φ nominal-standard)
Thermistor	YSI 44005 or equivalent
Temperature limit	-20° to 80° C
Protection	IP 68
Cable connection	Four-core shielded 1 m long; specify