



Railway **Mission**

Chaplaincy Service Annual Report

Railway Mission
Registered Charity No. 1128024

2015-2016

“...the chaplaincy team have been a real asset to our officers and rail staff and always offer valuable support during and after what can sometimes be quite traumatic incidents.”

*Sergeant Mo Mahmood
Emergency Intervention Unit
BTP Croydon*



Railway Mission



The Trustee Board of Railway Mission wish to express our gratitude to the Railway Industry for the valued support provided to our charity. Without the generosity of the industry the Railway Mission would have not be able to meet the needs of railway staff to which we provide a chaplaincy service.

Chaplaincy is being recognised more and more for its value within the industrial sector as an effective support mechanism for all. As a dedicated chaplaincy service specialising in the support of railway staff and those affected by railway related incidents, our team of chaplains are there to support you and your staff; regardless of faith, background, lifestyle or position in a company, our chaplains are there for everyone. From the part-time employee to the most

senior director we provide a listening ear and shoulder to lean on in times difficulty.

Our chaplains have an extensive schedule of visiting, including stations, offices, signal boxes, and depots. The past year has seen our chaplains involved in personal support to both serving and retired railway staff and their families through bereavements, illness, redundancies, and a host of other issues. Much of the work of the chaplains is at the invitation of rail managers; thus demonstrating the continued appreciation of the industry for the pastoral support and care provided by the chaplains. The aftermath of suicides on the rail network is an area where the chaplains provide much support, something which is increasingly recognised and valued officially within the industry.

Keith Rose, Chairman

Examples of Support

Over the past year the chaplains have provided support to rail staff in a variety of serious situations including:

- Bereavement
- Depression
- Early Onset Alzheimer's
- Work-Related Stress
- Fatalities at Stations
- Fatalities for Drivers
- Serious Assaults
- Rape
- Sexual Abuse at Work
- Domestic Violence
- Alcohol Abuse
- Gambling Addiction
- Drug Addiction
- Divorce and Separations
- Redundancies
- Long-Term Illness

Railway Incidents:

The table below gives the numbers of incidents that our chaplaincy team have been involved with through contact with staff involved and on occasion requests from BTP to give support to families and individuals affected by these events.



Fatality		Non - Fatal	
Suicide / Assumed Suicide	231	Attempted Suicide	15
Unexplained / Suspicious Death	4	Trespass Non-Fatal Injury (over 18)	7
Trespass Fatality Person (over 18)	6	Trespass Non-Fatal (under 18)	4
Trespass Fatality Person (under 18)	2	Level Crossing Incident Involving Vehicle	2
Level Crossing Incident involving Vehicle	1	Level Crossing Incident Involving Pedestrian	2
Level Crossing Incident / Pedestrian	0	Rail Staff Injury	1
Member of Staff Death	2	Non-fatal accident	5
Rail Staff Death	2		
Accidental fatality	3		
Sudden Death Passenger	6		

Supporting Emergency Intervention: Chaplaincy Team with BTP and Network Rail

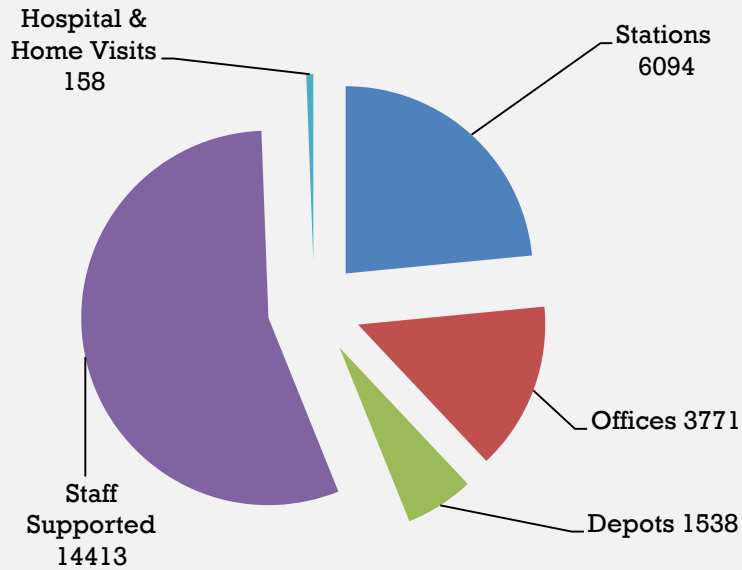
John Robinson is the chaplain for the South East and joined Railway Mission in March 2015. Since John's vetting was completed in July 2015, he has established regular monthly shifts with all eight of his BTP stations and as a result, he is working on a one to one basis with staff and their families across the network, as well as supporting both officers and the public during his shifts with BTP.

John has also worked, in tandem with the BTP Fatality Team, supporting both family members of the deceased and eyewitnesses to fatalities.

Sergeant Mo Mahmood, who manages the Croydon EIU team, was full of praise for Railway Mission and their work. He said: "John and the chaplaincy team have been a real asset to our officers and rail staff and always offer valuable support during and after what can sometimes be quite traumatic incidents. Recently one of our officers was assaulted but fortunately John was able to visit the hospital where he had been sent to and offer welfare support."



Railway Industry Chaplaincy Support Visits



Rail Staff Directly Supported	14413
Hospital & Home Visits	158
Funerals Officiated at or Attended	26

Chaplaincy Visits and Support

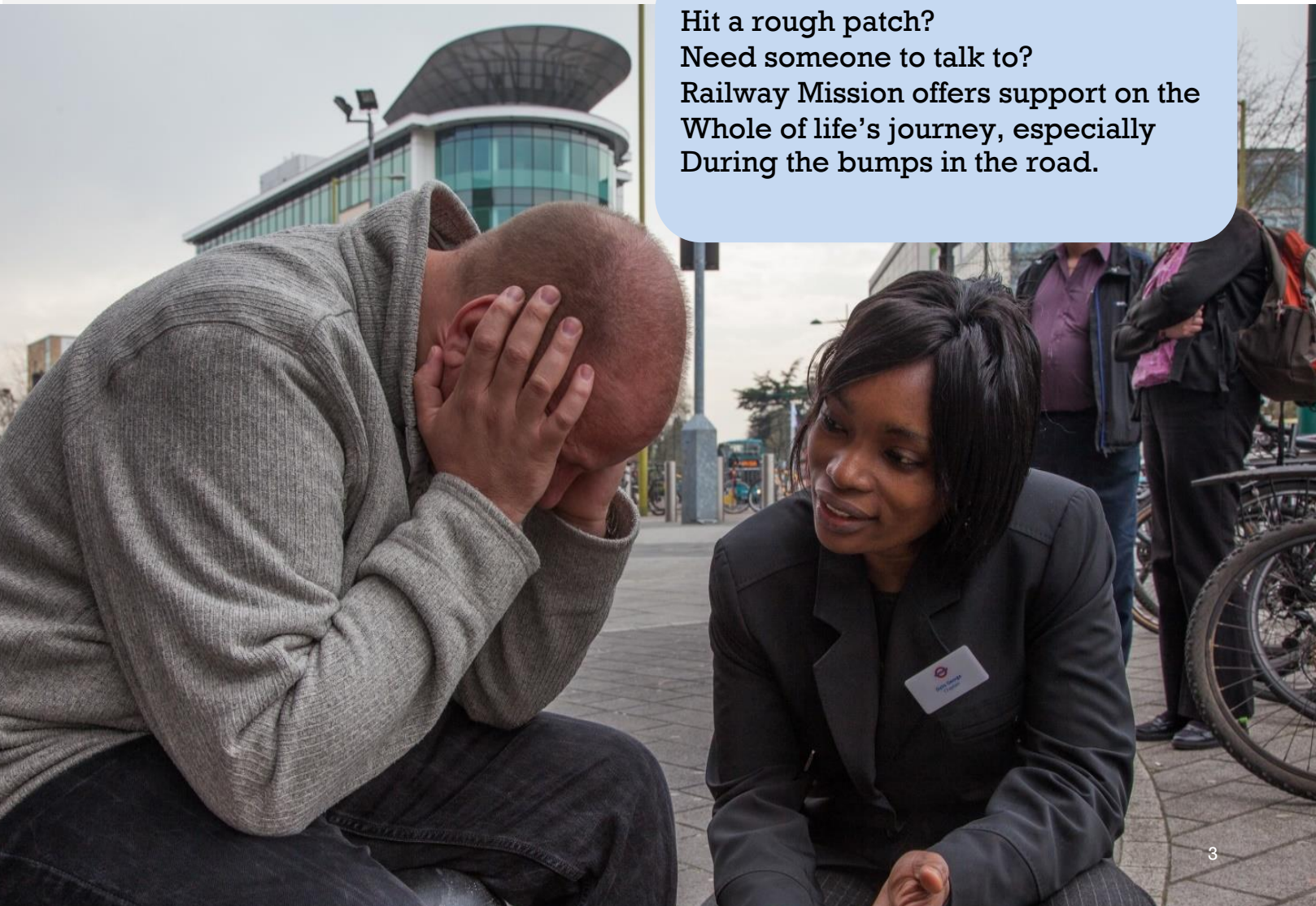
Our chaplains help railway staff enjoy the good times and get through the bad times. This is in all sectors and at all levels across rail companies and with the British Transport Police. Railway managers and senior police officers are increasingly relying on the support offered by chaplains to support their staff and people affected by railway operations.

Chaplains are based at strategic locations across England, Wales and Scotland. Each one brings a wealth of knowledge and life experience that helps give the pastoral support needed in times of difficulty and are trained in Psychological First Aid and other associated trauma and counselling support skills.

Chaplaincy complements the welfare services provided by rail employers, So, if life's journey feels threatened, we offer face-to-face support and an opportunity to talk about problems and explore solutions in an independent and impartial way striving to ensure that nobody on the railways needs to feel they are without help and support.

Railway Mission relies on donations to finance our work and meet an ever-growing need for our services. We receive financial support from the railway industry and from the generosity of individuals and some trust funds.

Hit a rough patch?
Need someone to talk to?
Railway Mission offers support on the
Whole of life's journey, especially
During the bumps in the road.



Working in partnership to support railway industry Staff

STM are a company providing staff to the railway industry that has found the chaplaincy service a valuable addition to the support services provided by the Company. The company Directors requested that the Chaplain local to their head office, Christopher Henley, visits them on a regular basis for a debrief and to introduce himself to anyone they feel would appreciate talking and listening to a chaplain.

Providing personnel to a number of companies, STM have asked for support for staff members from across the network. Chaplains have been asked to assist staff who have either been physically assaulted, witnessed a fatality or that have suffered a bereavement.

In the 'STM and SWT National Rail Awards Submission', the following extract can be read on page five.

"As a result of this work STM are working closely with the Railway Mission who offer friendship and a listening ear to anyone connected with the nation's railways. This link to our staff and assistance provided by the Chaplains has been invaluable in supporting our staff following a traumatic event, which thankfully are rare."



Other Areas of Support

Our chaplains have been asked to assist in safety briefing meetings, to talk about suicide prevention and trauma support, which has helped members of staff who have had issues they have been struggling with from the past. Mark Hopwood, the Managing Director of GWR, thanked one of the chaplains, Chris Newport, for the work he has been doing with the staff by giving Chris and his wife an award and a Pullman first class dining experience on a special charter service.

Chris also organised a tree planting in Moreton in Marsh station to help the family of a 17 year old boy who ended his life on the crossing. His mother had been leaving flowers on the crossing which was upsetting the driver, who regularly works that line. The driving instructor asked if there was anything Chris could do to help, as it was felt this couldn't go on. Chris arranged with the station manager, BTP and the family to have a tree planted on the station out of sight of the line, so that the family could have somewhere to go to remember. The family found it a moving and supportive event that helped them tremendously.

Such events show how the chaplaincy can bridge the divide between the public and the industry, being a representative for Train Operators, Network Rail or Police where there is a need.

Railway Mission Accounts 2015 / 2016

Incoming Resources

Supporter Donations	37,502
Railway Company Donations	261,965
Other income	712
Trust Companies	3,376
LCM Grant*	143,996
Income Tax Refunds	6,867
Donations for Calendars	2,637
Legacies and Memorials	2,718
Sponsorship Fund Raising Events	300
	<u>460,073</u>
Investment Income	
Bank Interest Receivable	2,401
Charifund Investment Income	2,246
	<u>4,647</u>
Total Income	<u><u>464,720</u></u>

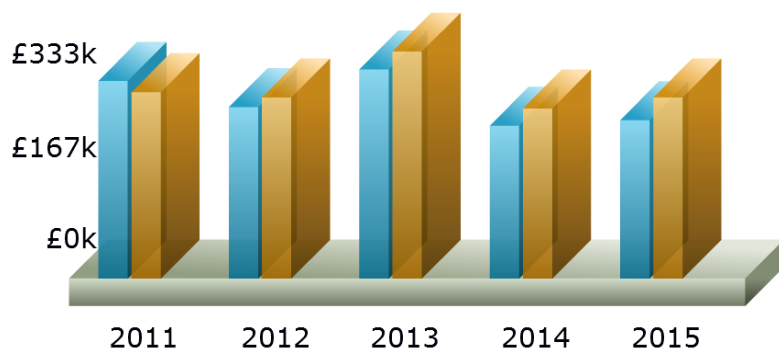
**LCM funding has been provided to maintain the chaplaincy level. This funding is due to end in February 2018*

Expenditure

Cost of Sales – Purchases (Calendar)	21,000
	<u>21,000</u>
Expenditure on Activities	
Staff Costs - Wages & Salaries	370,714
Staff Costs - Employer's NIC	27,411
Staff Costs - Other Post-Retirement Benefits	1,335
Establishment - Light & Heat	717
Establishment - Insurance	9,273
Motor and Travel Costs - Other	4,715
Office Expenses - Telephone	7,864
Conferences Seminars and Training	4,240
Subscriptions	512
Sundry Expenses	754
	<u>426,295</u>
Governance Costs	
Accountancy Fees	3,741
Legal and Professional Fees	9,717
Reimbursement of Trustees Expenses	621
Bank Charges	297
Bed Debt	50
Depreciation	88
Staff Expenses	54
Administration and Office Costs	4,383
Governance Costs	48
	<u>18,999</u>
Total Expenditure	<u><u>467,534</u></u>

Historic Accounts

£500k



Net Outgoing

Resources for the Year

-2,814

Organisational Management Structure of Railway Mission

Trustee Board 2015



Chairman Keith Rose



Cliff Perry



Barry Brown



Rufus Barns



Steve Hailes



Antonia Newman



Ian Markey



Ray Porter



James MacPhie



Tim Young



John Carrick



Ray Wingate



Executive Director, Liam Johnston



Anne McCulloch, Administration



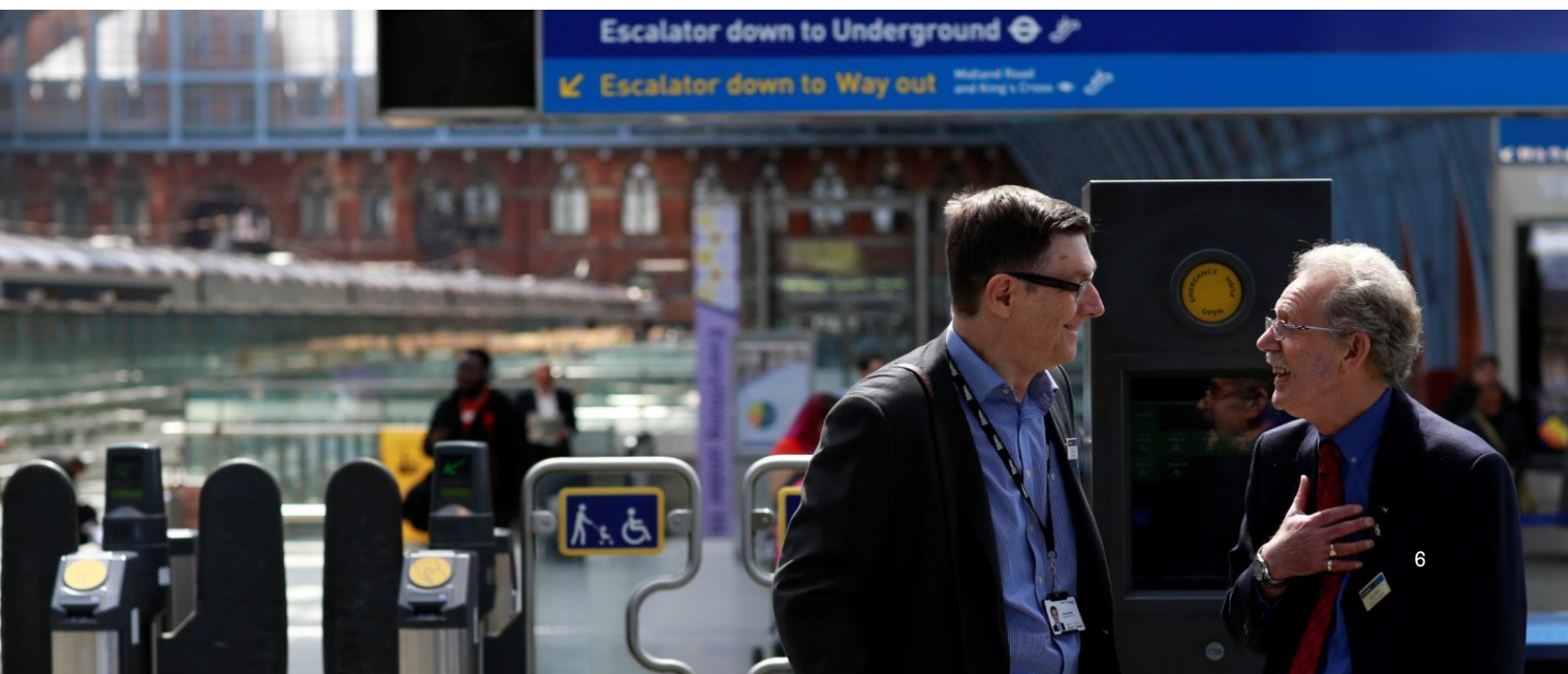
Area Co-ordinator and Lead Chaplain North

Andrew Hall



Area Co-ordinator and Lead Chaplain South

Steve Rowe





Railway Mission



Chaplaincy Service Annual Report

Railway Mission
Registered Charity No. 1128024

2015-2016