

PARTS AND SERVICE



WHO WE ARE

Our people's dedication and passion for building a superior product contribute to the long-term growth, value and overall success of our customers and the strength of our products.

With four decades of experience and expertise in the custom manufacturing of vocational vehicles, Gincor Werx is an industry leader known for its quality workmanship and technical innovation. Our product offering includes dump bodies, snow and ice equipment, flat decks, and van bodies. Our trailer offering includes heavy haul, equipment, tag, step deck, and live bottom trailers.

The acquisition of Durabody Industries in 2015 marked the beginning of rapid growth for the corporation with the ultimate goal of strengthening its overall product portfolio. The acquisition of JC Trailers in 2016 followed by opening Gincor Trailer Werx in 2017 greatly enhanced our product offering to an already solid industry identity.



1978

GINGRAS CORRIVEAU

Gingras Corriveau humbly began as a family business in 1978 and grew to become a leader in the vocational truck, trailer and service industry today.



2002

GIN-COR INDUSTRIES

2002 issued in a changing of the guard when Luc Stang became CEO and President. Fueling the company's success saw the acquisition of Durabody in 2015.



2015

DURABODY INDUSTRIES

By 2015 Gincor had become Canada's largest vocational upfitter with manufacturing, installation, service and customization capabilities. Fueling the company's success saw the acquisition of Durabody in 2015.

JC TRAILERS

Based on a long standing business model of seeking out opportunity and the desire to expand its current product offering led to the acquisition of JC Trailers in 2016.



2016

GINCOR TRAILER WERX

The opening of Gincor Trailer Werx (formerly the Blenheim operation of Cross Country Trailers) in December 2017, secured Gincor's position as Canada's largest supplier of truck equipment and trailers.



Leverage our parts and service knowledge to keep your fleet or equipment stock rolling. Our network utilize a shared inventory database so your part can be quickly located at any of our Gincor Werx locations.

- North Bay
- Mattawa
- Carleton Place
- Keswick
- Kingston
- Newmarket
- Bond Head
- Blenheim



With an extensive product portfolio, Gincor recognizes the importance of supporting it's equipment after it leaves our facilities.

Gincor Werx locations include parts and service, manufacturing, installation and sales.

- Blenheim
- Bond Head
- Carleton Place
- Keswick
- Kingston
- Mattawa
- Newmarket

OUR SERVICE FACILITIES



SERVICE FOR CLASS 8 AND SPIF



SERVICE FOR DECKS



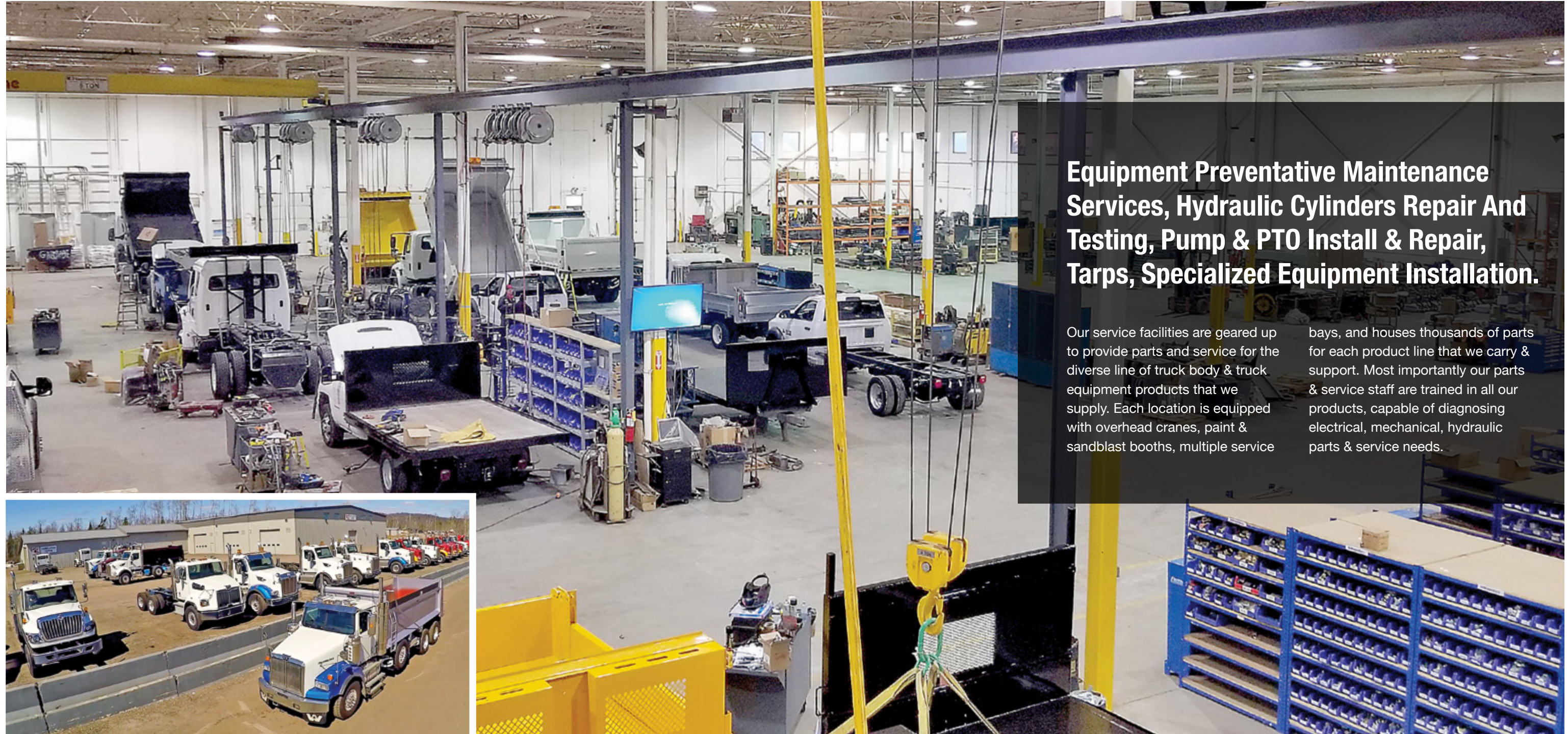
VAN BODY SERVICE



MOBILE SERVICE
NORTHERN AND
EASTERN ONTARIO



SERVICE FOR TRAILERS



Equipment Preventative Maintenance Services, Hydraulic Cylinders Repair And Testing, Pump & PTO Install & Repair, Tarps, Specialized Equipment Installation.

Our service facilities are geared up to provide parts and service for the diverse line of truck body & truck equipment products that we supply. Each location is equipped with overhead cranes, paint & sandblast booths, multiple service

bays, and houses thousands of parts for each product line that we carry & support. Most importantly our parts & service staff are trained in all our products, capable of diagnosing electrical, mechanical, hydraulic parts & service needs.



Mattawa, Ontario Facility

Newmarket, Ontario Facility

WE PERFORM SPIF CERTIFICATION



Vehicle Weights and Dimensions for Safe, Productive and Infrastructure-Friendly Vehicles

Safe, Productive, Infrastructure Friendly (SPIF) regulations minimize heavy truck damage to roads and bridges. Highway Traffic Act regulations are now causing a migration to 31 SPIF alternatives. Each has its own schedule in the regulation describing the vehicle, its axles, suspension and other required equipment as well as required dimensions and allowable weights. SPIF vehicles can have any body style and carry any commodity. There are no weight reductions for carrying products like sand or gravel. (mto.gov.on.ca – SPIF FAQ)

An Ontario wide standard for commercial vehicles designed to further increase highway safety, improve commercial vehicle productivity, and reduce road/bridge damage caused by heavy vehicles. SPIF regulations define the way any truck that was purchased from July 1, 2011 – onward has to be built to get maximum pay load in Ontario.

To achieve maximum output, a load equalizing steerable lift axle is used. If going with a lift axle; this combination gives you the most allowable pay load. You can still have a tandem unit or twin steer under the regulations, but would not have the desirable outcome. You can still choose a non-steer but the pay load is greatly reduced with this configuration.

Preventative Maintenance

A preventative maintenance program can help minimize equipment downtime and maximize your uptime and profitability. A regular service schedule will aide in extending your truck equipment's life span. Gincor recommends operators & end-users to adhere to those guidelines found in operator manuals that we include with every product that leaves our facility. Our preventative maintenance inspections include:

Functional Operation

Ensuring that the equipment is working the way it is intended to.

Electrical & Hydraulic Components,

Ensuring that sensitive components are protected and less susceptible to damage from the weather or debris.

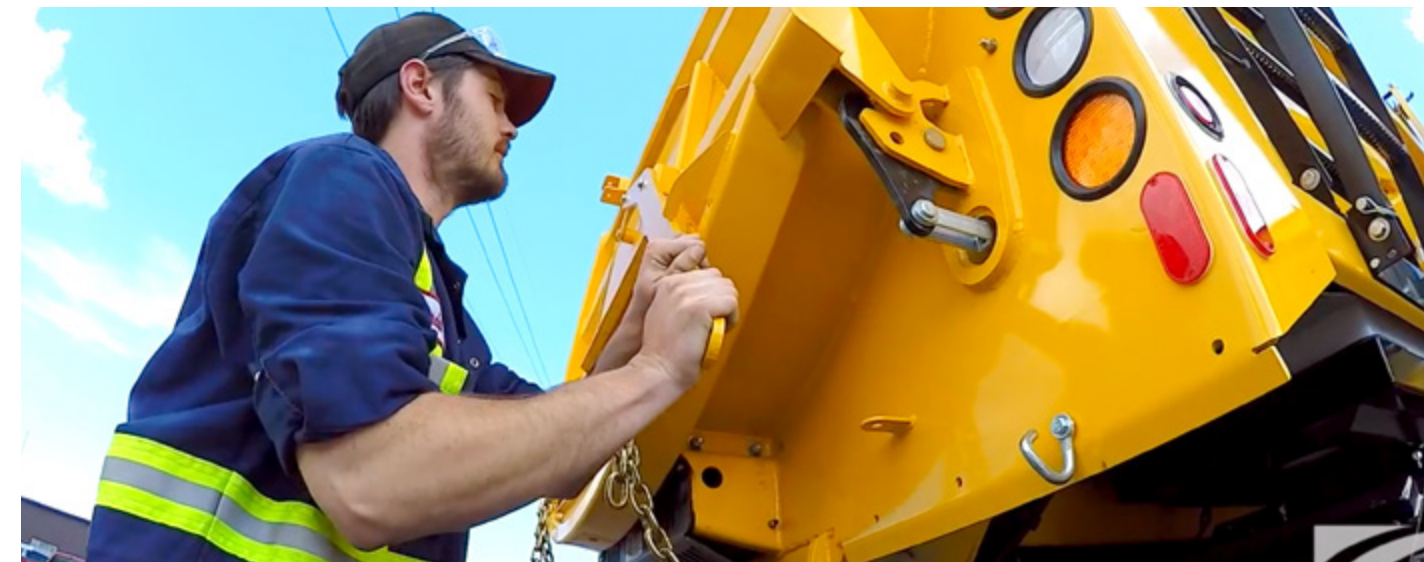
Body Construction

Inspecting welds, pivot points, and mechanical functions.

Operator Safety

Ensuring the operator is fully trained in the equipment. Ensuring safety features are functioning.

Each Gincor location stocks a healthy assortment of parts most commonly required by seasonal demands and customer buying cycles. Our shared parts inventory allows us to locate the nearest part from any of our 7 locations to get our customers back on the road as quickly as possible. We are fully equipped to provide full line truck body, truck equipment and trailer services. Gincor products carry a comprehensive warranty that covers defects from installation, electrical, hydraulic, paint, parts and workmanship.



WE SUPPLY YOUR COMMON PARTS



DUMP BODIES

- Dump Cylinder • Tarp Cylinder • Tarp Arms • Tarp Motor • Tarp Housing
- Tailgate Latching Parts • Coal Doors • Replacement Mesh Tarps
- Dump Valve • In Cab Dump Control (Electric, Air, Manual)
- Hydraulic Pumps & PTOs • Body Lights • Replacement Tailgate



SNOW AND ICE

- Electric Control Box • Hydraulic Motors • Bearings & Sprockets
- Drag Chains • Conveyor Chains • Gearbox • Spinner Disc • Baffles
- Locking Bars • Valve Blocks • Electric Spreader Controls • Mudflaps
- Tarp Cylinders • Tarp Arms • Trip Springs • Wing Braces, Lighting



FLAT DECKS

- Replacement floor material (wood)
- Latching materials for stake & rack side & gate
- Replacement bumper steps
- Winches & straps



PARTS AND SERVICE



VAN BODIES

- Lighting • Cargo Control (Straps, Shoring Bars, Tracks Etc.)
- Shelving • Grab Handles • Bumper Pads • Door Strap
- Bumper & Bumper Steps • Door Latches • Roll Up Door Parts



TRAILERS

- Complete Inspections • Brake Repair/Replacement • Complete Electrical
- Decking • Assembly And Body Repair • Hydraulic Valves • Hoses
- Cylinders • Power Packs • Sealed Wiring Harness • Stinger Cylinders
- Axles • Suspensions • Tires • Rims • Jacks • Blast and Repaint Services



MOBILE SERVICE

- Pre-season inspection on snow and ice equipment (quote on needed repair or replacement parts before winter season)
- Hydraulic trouble shooting and repair (hoses and fittings)
- Service or repair on dump bodies (tarp, tailgate, hoist replacement, welding)
- SPIF (safe-practice-infrastructure –friendly) calibration, repair, replace, new installations

www.gincor.com

MATTAWA

Gincor Werx
5151 Highway 17 West
Mattawa, ON
P0H 1V0
Phone: (866) 628-8292
Fax: (705) 744-2943

NORTH BAY

Gincor Werx
255A Fisher Street
North Bay, ON
P1B 2C8
Phone: (795) 478-6961

BLenheim

Gincor Trailer Werx
1 Solvay Drive
Blenheim, ON
N0P 1A0
Phone: (519) 676-7900
Fax: (519) 676-9918

BOND HEAD

Durabody
2753 Highway 27,
PO Box 230 Bond Head, ON
L0G 1B0
Phone: (800) 661-3775
Fax: (905) 775-8748

CARLETON PLACE

Gincor Werx
130 Pick Road
Carleton Place, ON
K7C 3P1
Phone: (866) 628-8292
Fax: (705) 744-2943

KESWICK

J.C. Trailers
25975 Woodbine Avenue
Keswick, ON
L4P 3E9
Phone: (905) 476-6572
Fax: (905) 476-6751

NEWMARKET

Gincor Werx
210 Harry Walker Parkway
Newmarket, ON
L3Y 7B4
Phone: (416) 421-5851
Fax: (416) 421-7663

KINGSTON

Gincor Werx
1059 John Counter Boulevard
Kingston, ON
K7K 6C7
Phone: (844) 542-5543

