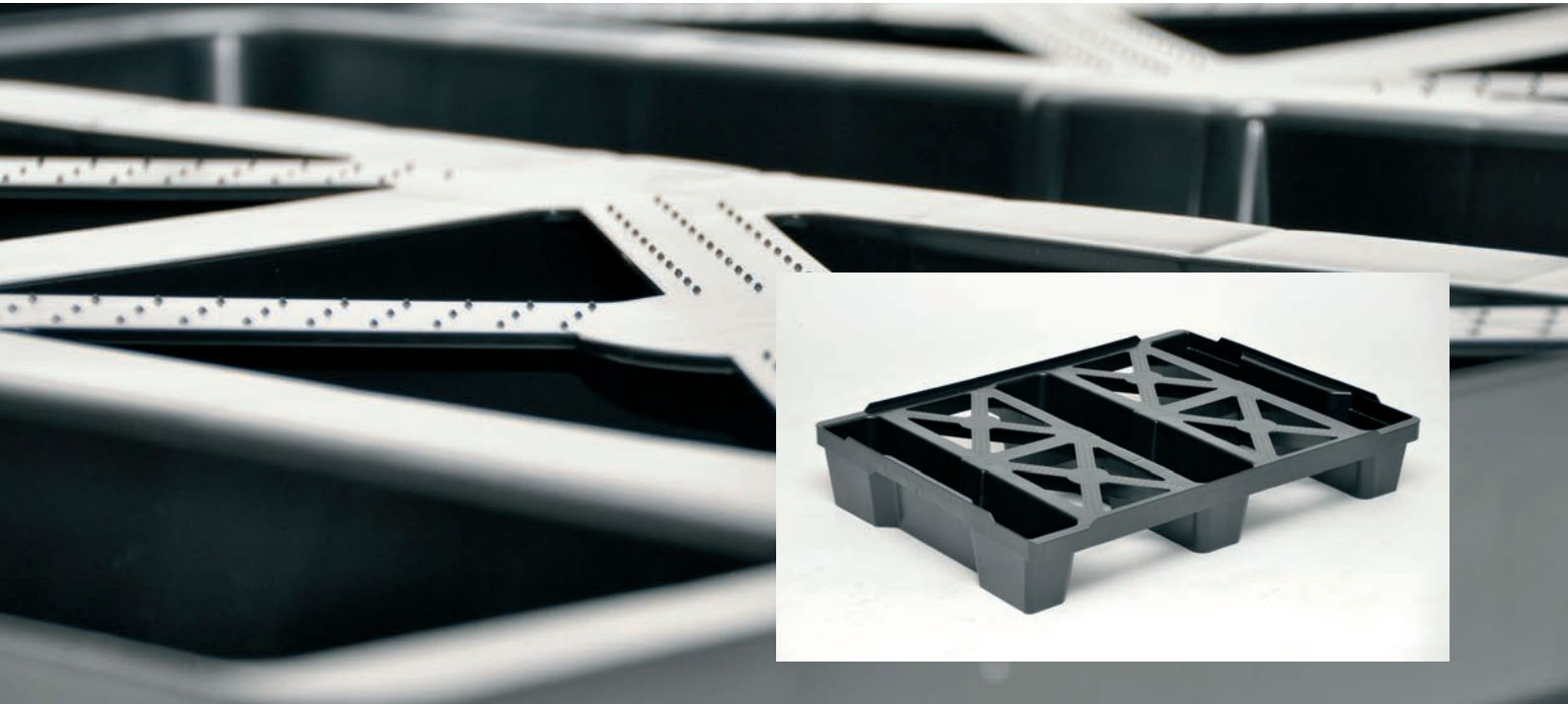


clever – creative – sustainable – smart



utz UPAL-E

The new, system-compatible export half-pallet

812 x 612 x 145 mm

The first competitively priced, nestable half-pallet for conveyor systems

With dimensions of 812 x 612 x 145 mm and its external, 12 mm high safety rim, the half-pallet UPAL-E provides a usable surface of 800 x 600 mm. Together with the structured areas injected on the upper surface for anti-slip purposes, the pallet also provides the optimum prerequisites for a high degree of slip resistance of the goods to be transported.

utzgroup.com



Passed test-runs on conveyor systems

The half-pallet UPAL-E was specifically designed for use on automatic roller tracks, chain and belt conveyors. Tests proved that the objective of smooth handling in Intralogistics was achieved. Thanks to the areas on the upper surface, the pallets can be automatically handled (stacked/destacked) using a robot equipped with suction caps. The lateral rim offers space for the attachment of Barcode labels or imprints.



utz UPAL-E

Order no.: 33-8060B-0 R
External dimensions: 812 x 612 x 145 mm
Usable area: 800 x 600 mm
Nesting height: 50 mm
Volume reduction: 65 %
Weight: 3.4 kg
Material: UIC® PE
Standard colour: black

Version: External safety rim 12 mm high, anti-slip fields to prevent sliding on upper deck, water drainage holes in the runners

