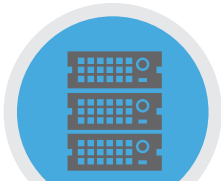


# Patriot 6.5

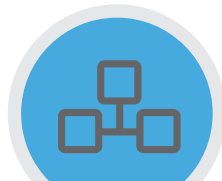
Patriot 6.5 is the worlds most advanced Alarm Monitoring Software. Integrated with all standard alarm receivers, IP systems, Camera systems and Lone Worker devices, Patriot provides a evolving suite of Modules to meet your Clients and Station requirments.

## Connect to alarm receivers, alarm panels, camera systems and more



### Alarm Receivers

- ✓ Compatible with all major PTSN, GPRS, IP and GSM Alarm Receivers



### IP Alarm Signals

- ✓ Receive IP signals directly from compatible alarm panels, no alarm receiver required
- Including Texecom, CSV, ICT, ArmorIP, CSLDualcom, LS 30 SIA DC09, Paradox, Galaxy and more



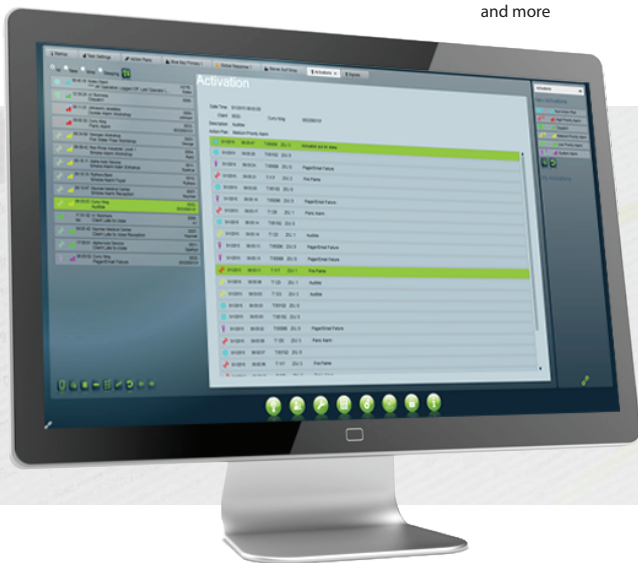
### Camera Systems

- ✓ Video Verification, PTZ, Live Feed, Guard Tours and more
- ✓ Compatible with Hikvision Paradox, Risco, Videofied, Dahua, Railto, Avigilon, ONVIF, RTSP and more



### Lone Workers

- ✓ Receive alarms from Lone Worker devices such as Identicom, GoTOP & Minder
- ✓ GPS movements tracked on map for mobile devices



Operates on Windows / SQL DR and HA / Always On options  
 Extensive Online Documentation  
 24/7 Emergency Support Program  
 Scalable from 100 to 100,000+ Accounts  
 Meets international station grading criteria  
 Powerful Range of Optional Modules

## Provide advanced services and communication to your Users



### Clients

- ✓ Customized Event Types & Response Plans for complete response customization.
- ✓ Internet Client Access with signal history, users & zone lists, response lists and more. ICA Advanced allows clients to update thier details.
- ✓ Monitor mobile clients with GPS positioning.



### Patrols

- ✓ Send Alarm Alerts to Patrols Automatically.
- ✓ Patrols can acknowledge alarms by SMS or Email reply.
- ✓ Dispatch Module allows patrols to be ranked & added to the activation list based on client or area preferences.



### Users

- ✓ Send two way First Response messages to users via SMS, App or Email. Users can fallback the alarm to the station, acknowledge the alarm and extend late to close events.
- ✓ Send installers and technicians Work Orders.
- ✓ Add User specific open out of hours tolerences for cleaners, staff or the whole site.



### Dealers (Bureau)

- ✓ Dealer (Bureau) Access with Client creation, report and maintenance functions.
- ✓ Customised reports for dealers. Scheduled reports can be sent on behalf of the Dealer (Bureau).
- ✓ Dealer branding and optional Client to Dealer (Bureau) customisation of charges, response plans and more.

## Additional Modules

Additional Modules can be added to the main Patriot Software so you can customize your Patriot Package to your stations requirements.

### Main Modules

#### Basic Accounting CSV Module

*The Basic Accounting Module allows Patriot to export billing and invoice details from Patriot directly to any accounting software that supports the CSV format. Reoccurring charges, one of Response fees and Work Order service charges are setup to be sent to your CSV compatible accounting software are preset time intervals. This reduces manual data entry and keeps the charges 100% correct and accurate. Customers with mutiple clients can be provided one line invoices with a breakdown of their customers provided in an additional report to simply your accounts.*

#### Open ERP Accounting Module

*The Open ERP Module allows Patriot to integrate with Open ERP / Odoo. This Module requires Open ERP / Odoo to be installed at the station prior to Patriot integration. As well as keeping eoccurring charges, one of Response fees and Work Order service charges accurate there are advanced features that allow accounts team to setup clients from Odoo, to quickly access Patriot accounts from Odoo and for Patriot staff to log sales notes. Customers with mutiple clients can be provided one line invoices with a breakdown of their customers provided in an additional report to simply your accounts.*

#### Email Module

*The Email Module allows Patriot to send emails such as alarm notifications or manual messages. This can be automated or manual sent, you can also automatically or manually send reports attached to emails.*

#### Email Receiver Module

*The Email Receiver Module allows Patriot to receive email messages and to utilize them to acknowledge alarms or generate alarms.*

#### SMS Gateway Module

*The SMS Gateway Module allows Patriot to send Text Messages through the Clickatell internet gateway to any mobile phone E.g. send alarm notifications to clients or guard.*

#### GSM Messaging Module

*The GSM Module allows Patriot to send Text Messages through a GSM Modem E.g. send alarm notifications to clients or guards.*

#### First Response / Plink Module

*The First Response Module allows users and keyholders to receive activation alerts via smart phone app, text message or email. Users and keyholders can acknowledge these notifications, fall the alert back to the operator or extend late to close notifications by entering in the hours they will be on site for. The Plink Smart Phone app will also allow Users to view and edit their site, user and response details ( ICA / ICA advanced required).*

#### Advanced Messaging Module

*The Advanced Messaging Module allows Patriot to use alarm escalation, receive SMS Text messages and auto acknowledge alarms. This Module requires one of the Messaging Modules (Email, Telephony, GSM) and is useful for sites that require automatic notifications on alarms sent to guards or patrols and will allow them to acknowledge the alarm remotely.*

#### Telephony Module

*The Telephony Module allows Patriot to use an Asterisk PABX exchange to set up a IVR system. Patriot provides a Asterisk setup file, a suitable PC is required at the station to run the Asterisk system.*

#### Asterisk Dialler Module

*The Asterisk Dialler Module allows Patriot to auto dial numbers using the Asterisk phone system.*

#### TAPI Dialler Module

*The TAPI Dialler Module allows Patriot to auto dial numbers using the TAPI system.*

#### Mapping Internet Module

*The Mapping Module allows Patriot to show client locations on a map, interact with the map and use street view. This Module also allows you to view all alarm activations on a large map and to track mobile clients via GPS including Patrols.*

## Internet Client Access Module

*The Internet Client Access Module allows clients to access their accounts through any web browser on PC or a smart phone. The can view site status, check Users, schedules, alarm history etc. The ICA Module also adds the Supervisor Dashboard feature for supervisors to monitor statistics on the system and activations and response.*

## Internet Client Access Advanced Module

*The Advanced Internet Client Access Module allows clients to update details through the secure ICA web portal.*

## Redcare Module

*The Redcare Module allows Patriot Redcare support.*

## UK Module

*The UK Module allows Patriot UK support.*

## UL Module

*The UL Module allows Patriot to meet UL1981 revision 3 standards.*

## Workstation Module

*The Workstation Module adds an additional Patriot Workstation to your license.*

## Internet Dealer Access Module

*The Internet Dealer Access Module allows Dealers to log into Patriot and update their clients. This requires an additional workstation for each dealer connected to the Patriot System, usually access via RDP on a virtual machine. This Module also allows other dealer features such as dealer charges, action plan and response overrides, dealer branding on clients with callback numbers and Dealer/Engineer access to the Internet Client Access module if licensed.*

## FE900 Listen in Module

*The FE900 Module allows Patriot to listen in to calls through selected alarm panels, to aid in alarm verification.*

## Backup Connection Module ( Remote Receiver Task )

*The Backup Connection Module will allow Patriot to monitor remote servers to ensure they remain in communication with the main Patriot server.*

## Patriot SDK Module

*The Patriot SDK Module allows 3rd party integration Modules to be developed and utilized for use with Patriot. Standard SDK and JSON SDK are available.*

## Non Monitored Accounts Module

*The Patriot Non Monitored Accounts Module allows you to assign clients who do not require monitoring or response as a Non Monitored account. While still stored in the Patriot database any signals received by these accounts won't be logged against this account but instead redirected to a system account, most information relating to the signal is also removed before the signal is logged.*

## IP Receivers

### IP Receiver - Arrowhead

*The Arrowhead Module allows Patriot to directly receiver IP signals from Arrowhead devices*

### IP Receiver - Texecom

*The Texecom Module allows Patriot to directly receiver IP signals from Texecom devices*

### IP Receiver - Siemens

*The Siemens Module allows Patriot to directly receiver IP signals from Siemens Panels with Firmware version 2.3 and higher*

### IP Receiver - Paradox Hellas Sirion

*The Paradox Hellas Sirion Module allows Patriot to directly receiver IP signals from Paradox Hellas Sirion devices*

### IP Receiver - DC09

*The DC09 Module allows Patriot to directly receive IP signals from any device using the DC09 open standard DC09.*

### IP Receiver - ICT Armor IP

*The ICT Armor IP Module allows Patriot to directly receiver IP signals from ICT Armor IP devices*

### IP Receiver - CSV

*The CSV Module allows Patriot to directly receive IP signals from any devices using the open standard CSV format*

### **IP Receiver - LS30**

*The LS30 Module allows Patriot to directly receiver IP signals from LS30 devices*

### **IP Receiver - Emizon**

*The Emizon Module allows Patriot to directly receiver IP signals from Emizon devices*

### **IP Receiver - CSL Dualcom**

*The CSL Dualcom Module allows Patriot to directly receiver IP signals from CSL Dualcom devices*

### **IP Receiver - Galaxy**

*The Galaxy Module allows Patriot to directly receiver IP signals from Glaxay Evo devices*

### **IP Receiver - Paradox Direct**

*The Paradox Direct Module allows Patriot to integrate with Paradox Alarm Panels. As well as being able to arm and disarm the panels remotely Patriot can also receive video verification from cameras.*

## **Lone Worker Modules**

### **Identicom**

*The Identicom Module allows Patriot to receive GPS location and alarm events from Identicom devices.*

### **GoTOP**

*The GoTOP Module allows Patriot to receive alarm events from GoTOP Devices*

### **Patriot Minder**

*The Patriot Minder Module allows users with the Minder Smart Phone app to send duress signals to Patriot and have Patriot display the alarm with the current GPS location of the User. There is also options for no movement detection, polling, meetings and other optionsal alarms to keep your lone workers safe.*

## **Camera Interfaces**

### **Camera Interface - Videofied**

*The Videofied Module allows Patriot to integrate with Videofied systems. This allows for video verification to be shown on alarm activations.*

### **Camera Interface - Hikvision**

*The Hikvision Module allows Patriot to integrate with Hikvision Camera systems. This allows for event notification, live feed, reference images and video verification. The Module also allows for PTZ and camera control features.*

### **Camera Interface - Risco**

*The Risco Module allows Patriot to integrate with Risco alarm system and will show image verification on alarm activations.*

### **Camera Interface - Bosch**

*The Bosch Module allows Patriot to integrate with Bosch Camera systems. This allows for event notification, live feed and video verification. The Module also allows for PTZ and camera control features.*

### **Camera Interface - Mobotix**

*The Mobotix Module allows Patriot to integrate with Mobotix Camera systems. This allows for event notification, live feed and video verification. The Module also allows for PTZ and camera control features.*

### **Camera Interface - Milestone**

*The Milestone Module allows Patriot to integrate with the Milstone system. This allows for event, analytic and video verification from CCTV and camera systems. Milestone Module also allows control of camera and audio link from within Patriot.*

### **Camera Interface - Adder**

*The Adder Module allows Patriot to integrate with Adder systems*

### **Camera Interface - VideoIQ**

*The VideoIQ Module allows Patriot to integrate with VideoIQ systems*

### **Camera Interface - Dedicated Micros**

*The Dedicated Micros Module allows Patriot to integrate with Dedicated Micros systems*

#### **Camera Interface - Hietel**

*The Hietel Module allows Patriot to integrate with Hietel systems*

#### **Camera Interface - OzVision**

*The OzVision Module allows Patriot to view live camera feed from Ozvision Cameras*

#### **Camera Interface - Adpro**

*The Adpro Module allows Patriot to view live camera feed from Adpro Platinum Cameras*

#### **Camera Interface - Paradox**

*The Paradox I Module allows Patriot to integrate with Paradox Camera systems. This allows for event notification and video verification. You can replay past event video and will show live feed with the Video Verification*

#### **Camera Interface - We.R**

*The We.R Module allows Patriot to integrate with We.R Camera systems. This allows for event notification and video verification.*

#### **Camera Interface - Dowshu**

*The Dowshu Module allows Patriot to integrate with Dowshu Camera systems. This allows for event notification and video verification.*

#### **Camera Interface - Dahua**

*The Dahua Module allows Patriot to integrate with Dahua Camera systems. This allows for event notification, reference image, and video verification*

#### **Camera Interface - Davantis**

*The Davantis Module allows Patriot to integrate with Davantis Camera and analytic systems. This allows for event notification and video verification.*

#### **Camera Interface - UDP**

*The UDP Module allows Patriot to integrate with UDP Camera systems. This allows for event notification and video verification.*

#### **Camera Interface - Rialto**

*The Rialto Module allows Patriot to integrate with I4 and A4 Rialto camera systems. As well as live feed, video events and alarm signals are also integrated and you can listen to audio from the camera system.*

#### **Camera Interface - Avigilon**

*The Aviglon Module allows Patriot to integrate with Aviglon system for video events, live feed, telemetry, audio, polling, reference frames and guard tours..*

#### **Camera Interface - ONVIF**

*The ONVIF Module allows Patriot to integrate with ONVIF Profile G cameras and receive live feed*

#### **Camera Interface - RTSP**

*The RTSP Module allows Patriot to integrate with RTSP cameras and receive live feed*

#### **Virtual Guard Tour**

*The Virtual Guard Tour Module allows Patriot to use video camera systems such as Hikvision and Mobotix to create a virtual tour of a site. Operators are made to follow through each camera for a specific period with instructions and site notes.*

#### **Video Recording Module**

*The Video Recording Module will record any video events viewed by operators within the Patriot video event interface. As well as saving a vital local copy of the event the operator actions are also recorded for audit purposes.*