

Accessories Catalog



mindray

Welcome to the Mindray North America Parts and Accessories Catalog

This catalog will provide you with the parts and accessories that connect to your Mindray Anesthesia Delivery System, Bedside Monitors or Central Station. Each Mindray product is the product of a special brand of patient-focused, clinician-friendly design. For this reason, you can expect the same service, focus and quality with our parts and accessories.

About Mindray

Mindray is a leading global developer, manufacturer, and supplier of medical devices whose mission is to deliver high-quality, richly featured medical products making healthcare more accessible and affordable around the world. With products and services in over 190 countries, Mindray is committed to innovation and advancing technology with seven global R&D centers and an industry leading investment of 10% annual revenue into research and development.

Exceptional service and support

Clinical education specialists provide your staff with comprehensive, on-site product training and in-service. Our dedicated field service team and in-house technical support organization represent one of the largest direct service teams in the industry.

Learn how we can help you maximize your resources with some of the most advanced and affordable devices in the industry. For more information about Mindray products and services, visit www.na.mindray.com.

Finding the Right Part

This catalog has been designed to make finding the right part easy. Chapters are organized by specific product categories. Simply locate the type of part you are looking for under the appropriate category. Not sure which part works with what monitor? No problem. Each accessory is clearly marked for its corresponding medical device.

How to Order

We have made placing orders for parts and accessories easy. You can shop online or contact our customer service department. To shop online 24 hours a day, 7 days a week, log on to: <http://store.na.mindray.com>
Our online store is available only to US customers.

You can also call our customer service department at 1-800-288-2121 (Press 3) Monday – Friday, 8:30am-6:00pm EST.

Buy your accessories from a company you can trust, who offers service you can depend on and the support you expect.

NOTE: This catalog is not an Operating Instructions Manual. This catalog will assist you in identifying the correct parts and accessories to connect to your Mindray anesthesia delivery system, bedside monitor or Central Station. For Operating Instructions, please refer to the Operating Instructions Manual. Warnings, Precautions and Notes can also be found in the Operating Instructions.

Anesthesia	
AGSS	1
Airway Adapters	1
Battery	1
Breathing Systems	2
O ₂ Canisters	3
Flow Sensor	4
Gas Cylinders	4
Gas Sampling Lines	4
Hoses	5
Mounts	8
Networking USB Storage	11
O ₂ Sensor	12
Vaporizers	13
Water Traps	14
Batteries	15
BeneLink Cables	18
Cardiac Output Cables	19
CO ₂	
Airway Adapters	20
Cannula	20
Kits	21
Sampling Lines	21
Water Traps	22
Data Storage	23
ECG	
Cables	24
ESIS Cables	26
Neonate Cables	27
Cable Adapters	27
Electrodes	28
Lead Wires – 3 Lead Pinch	28
Lead Wires – 3 Lead Snap	30
Lead Wires – 5 Lead Pinch	31
Lead Wires – 5 Lead Snap	32
Lead Wires – 6 Lead	33
Lead Wires – 12 Lead	34
Single Patient Use Lead Wires	35
Invasive Blood Pressure	
IBP Cables	36
Miscellaneous Accessories	38
Miscellaneous Cables	39
Mounts	
Bedrail Mounts	44
Miscellaneous Mounts	45
Mounting Accessories	45
Mounting Brackets and Plates	45
Remote Display (RD1) Mounts and Displays	48
Wall Mounts	49
Non-Invasive Blood Pressure	
Neonate Blood Pressure Cuffs	52
NIBP Hoses	53
Reusable Blood Pressure Cuffs	54
Single Patient Use Blood Pressure Cuffs	55
NMT Accessories	57
Paper	58
Pulse Oximetry	
DPM SpO ₂	59
Masimo SET®	61
Nellcor™	64
Nonin	65
Rolling Stands	66
Rolling Stand Parts	
Temperature	
Disposable Mindray Temperature Probes	69
Disposable Temperature Probes – 400 Series	69
Reusable Mindray Temperature Probes	70
Reusable 400 Series Temperature Probes	71
SmarTemp Probes	72
Welch Allyn® SureTemp® Plus Thermometer Module and Accessories	73

AGSS Accessories



Waste Gas Scavenger Assembly

115-017035-00

Waste Gas Scavenger Assembly

Compatible with A-Series



AGSS Transfer Tube

801-0631-00074-00

AGSS Transfer Tube

Compatible with A-Series



Waste Gas Hose for Gas Module to Quick Release Fitting

801-0631-00078-00

Waste Gas Hose for Gas module to Quick Release Fitting

Compatible with A3, A4, A5

Airway Adapters



Dryline™ Airway Adapter – Elbow

115-043021-00

Dryline airway adapter, elbow, box of 10

Compatible with A-Series



Dryline™ Airway Adapter – Straight

115-043020-00

Dryline airway adapter, straight, box of 10

Compatible with A-Series

Battery



Lithium-ion Battery

115-018012-00

Lithium-ion Battery, 11.1V

Compatible with A-Series, Accutorr 3, Accutorr 7, Passport 8, Passport 12, Passport 12m, Passport 17m

Breathing System**Bellows Dome**

801-0631-00054-00

Bellows Dome, A-Series

Compatible with A-Series

**Bellows Assembly**

0601-30-78968

Bellows Assembly, A-Series

Compatible with A-Series

**Insp/Exp Connector**

801-0631-00057-00

Insp/Exp Connector, A-Series

Compatible with A-Series

**Insp/Exp Connector Rotary Cap**

801-0631-00059-00

Insp/Exp Connector Rotary Cap, A-Series

Compatible with A-Series

**Water Collection Cup**

801-0631-00058-00

Water Collection Cup, A-Series

Compatible with A-Series

**Check Valve Dome**

801-0631-00061-00

Check valve dome, A-Series

Compatible with A-Series

**Check Valve**

801-0631-00104-00

Check valve, A-Series

Compatible with A-Series



Bag Arm - Fixed Height

115-048600-00

Bag Arm - Fixed Height, A-Series

Compatible with A-Series



Bag Arm - Flexible

115-028041-00

Bag Arm - Flexible Height, A-Series

Compatible with A-Series

Airway Pressure Gauge

115-051819-00

Airway pressure gauge, A-Series

Compatible with A-Series

O₂ Canisters



CO₂ Absorbent Canister

801-0631-00066-00

CO₂ Absorbent Canister, A-Series

Compatible with A-Series



CO₂ Bypass Assembly

115-036378-00

CO₂ Bypass Assembly, A-Series

Compatible with A-Series



CO₂ Absorber Hose

801-0631-00092-00

CO₂ Absorber Hose, A-Series

Compatible with A-Series



CO₂ Absorber Base with Drain Valve

801-0631-00100-00

CO₂ Absorber Base with Drain Valve, A-Series

Compatible with A-Series

**CO₂ Absorbent Canister - Pre-Pak**

0683-00-0326-12

CO₂ Absorbent, Pre-Pak (12)

Compatible with A-Series

Flow Sensor**Expiratory Flow Sensor Assembly**

801-0631-00056-00

Expiratory Flow Sensor Assembly

Compatible with A-Series

**Inspiratory Flow Sensor Assembly**

801-0631-00060-00

Inspiratory Flow Sensor Assembly

Compatible with A-Series

Gas Cylinders**Washer, Seal for Cylinder**

0348-00-0185

Washer, Seal for Cylinder

Compatible with A-Series

**Gas Cylinder Wrench**

115-033063-00

Gas Cylinder Wrench

Compatible with A-Series

Gas Sampling Lines**Gas Sampling Line, 10' Male/Male, Adult**

115-043017-00

Sampling line, Adult, 10', box of 25

Compatible with A-Series



Gas Sampling Line, Low Volume, Neonate

115-043018-00

Sampling line, Neonatal, box of 25

Compatible with A-Series



Gas Sampling Line, 10' Male/Male, Adult

040-002625-00

Sampling line, Adult, 10', box of 25

Compatible with A7



Gas Sampling Line, Low Volume, Neonate

040-002624-00

Sampling line, Neonatal, box of 25

Compatible with A7

Hoses



Air Hose - Chemetron

0004-00-0079-12

Air Gas Supply Hose 15' Chemetron

Compatible with A-Series



Air Hose - DISS Female

0004-00-0079-14

Air Gas Supply Hose 15' Diss Female

Compatible with A-Series



Air Hose - Ohmeda

0004-00-0079-11

Air Gas Supply Hose 15' Ohmeda

Compatible with A-Series



Air Hose - Puritan Bennett

0004-00-0079-13

Air Gas Supply Hose 15' Puritan Bennett

Compatible with A-Series

**EVAC Hose - Chemetron**

0004-00-0081-12

EVAC Gas Supply Hose 15' Chemetron

Compatible with A-Series

**EVAC Hose - DISS Female**

0004-00-0081-14

EVAC Gas Supply Hose 15' Diss Female

Compatible with A-Series

**EVAC Hose - Ohmeda**

0004-00-0081-11

EVAC Gas Supply Hose 15' Ohmeda

Compatible with A-Series

**EVAC Hose - Puritan Bennett**

0004-00-0081-13

EVAC Gas Supply Hose 15' Puritan Bennett

Compatible with A-Series

**EVAC/VAC Hose - Chemetron**

0004-00-0081-32

EVAC DISS to VAC Gas Supply Hose 15' Chemetron

Compatible with A-Series

**EVAC/VAC Hose - DISS Female**

0004-00-0081-34

EVAC DISS to VAC Gas Supply Hose 15' Diss Female

Compatible with A-Series

**EVAC/VAC Hose - Ohmeda**

0004-00-0081-31

EVAC DISS to VAC Gas Supply Hose 15' Ohmeda

Compatible with A-Series



EVAC/VAC Hose - Puritan Bennett

0004-00-0081-33

EVAC DISS to VAC Gas Supply Hose 15' Puritan Bennett

Compatible with A-Series



N₂O Hose - Chemetron

0004-00-0078-12

N₂O Gas Supply Hose 15' Chemetron

Compatible with A-Series



N₂O Hose - DISS Female

0004-00-0078-14

N₂O Gas Supply Hose 15' Diss Female

Compatible with A-Series



N₂O Hose - Ohmeda

0004-00-0078-11

N₂O Gas Supply Hose 15' Ohmeda

Compatible with A-Series



N₂O Hose - Puritan Bennett

0004-00-0078-13

N₂O Gas Supply Hose 15' Puritan Bennett

Compatible with A-Series



O₂ Hose - Chemetron

0004-00-0077-12

O₂ Gas Supply Hose 15' Chemetron

Compatible with A-Series



O₂ Hose - DISS Female

0004-00-0077-14

O₂ Gas Supply Hose 15' Diss Female

Compatible with A-Series

**O₂ Hose - Ohmeda**

0004-00-0077-11

O₂ Gas Supply Hose 15' Ohmeda

Compatible with A-Series

**O₂ Hose - Puritan Bennett**

0004-00-0077-13

O₂ Gas Supply Hose 15' Puritan Bennett

Compatible with A-Series

**VAC Hose - Chemetron**

0004-00-0080-14

VAC Gas Supply Hose 15' Chemetron

Compatible with A-Series

**VAC Hose - DISS Female**

0004-00-0080-16

VAC Gas Supply Hose 15' Diss Female

Compatible with A-Series

**VAC Hose - Ohmeda**

0004-00-0080-13

VAC Gas Supply Hose 15' Ohmeda

Compatible with A-Series

**VAC Hose - Puritan Bennett**

0004-00-0080-15

VAC Gas Supply Hose 15' Puritan Bennett

Compatible with A-Series

Mounts**Cable Hooks**

0436-00-0206

GCX Cable Hook (mounts under Arm)

Compatible with DPM 6, DPM 7, Passport 12m, Passport 17m, when mounted to A-Series anesthesia machines



DPM 5 Mounting Plate

115-003477-00

DPM5 Adapter Plate mounts the DPM 5 to the A-Series anesthesia machine

Compatible with A-Series, DPM 5



DPM and Passport Series A-Series Mounting Adapter

050-000702-00

Mounting adapter with integral cable hooks mounts the DPM 6/7 to the GCX Arm for mounting to the A-Series Anesthesia machine

Compatible with A-Series, DPM 6, DPM 7, Passport 12m, Passport 17m



DPM 6/7 SMR to A-Series Mounting Kit

115-009637-00

Six inch pole, adapter and clamp mounts the Satellite Module Rack to the GCX arm under the DPM 6/7

Compatible with A-Series



Monitor Mounting Arm, Pivot, 12"

0436-00-0169

Monitor Mounting Arm, Pivot, 12"; used with compatible mounting plate to mount the DPM 6 to the A-Series

Compatible with A-Series, DPM 6, Passport 12, Passport 12m



Monitor Mounting Arm, Pivot, 16"

0436-00-0198

Monitor Mounting Arm, Pivot, 16" ; used with compatible mounting plate to mount the DPM 7 to the A-Series

Compatible with A-Series, DPM 6, DPM 7, Passport 12, Passport 12m, Passport 17m



Mounting Kit, GM3 to GCX Mount Adapter Plate

0386-00-0344

Mounts the Gas Module 3 to the GCX mounting plate

Compatible with A-Series



Mount, Suction Canister

0436-00-0259

Mount, Suction Canister

Compatible with A-Series



Mounting Arm, Suction Regulator

0436-00-0207

Mounting Arm, Suction Regulator

Compatible with A-Series



Regulator, Patient Suction

0992-00-0256

Regulator, Patient Suction

Compatible with A-Series



Utility Tray, Dual Pivot, 24"

0436-00-0258

Utility Tray, Dual Pivot, 24"

Compatible with A-Series

Top Mounting Kit, Passport 17m

115-004003-00

Mounts patient monitor to top of A-Series

Compatible with A-Series, DPM 7, Passport 17m

Top Mounting Kit, Passport 12m

115-004004-00

Mounts patient monitor to top of A-Series

Compatible with A-Series, DPM 6, Passport 12m

CPU Mount 1.5" - 3" / 3.8 - 7.6 cm wide

008-000468-01

Mounts CPU to side of the A-Series

Compatible with A-Series

CPU Mount 3" - 4.5" / 7.6 - 11.4 cm wide

008-000468-00

Mounts CPU to side of the A-Series

Compatible with A-Series

CPU Mount 4.5" - 7" / 11.4 - 17.8 cm wide 008-000468-02

Mounts CPU to side of the A-Series

Compatible with A-Series

CPU Mount 7" - 9.5" / 17.8 - 24.1 cm wide 008-000468-03

Mounts CPU to side of the A-Series

Compatible with A-Series

Spring Hook 115-021015-00

Hook supports additional storage of various accessories

Compatible with A-Series

AIMS Mounting Arm 034-000288-00

Mounting arm to support AIMS / EMR display

Compatible with A-Series

A-Series AIMS Mounting Ergotron Kit 121-001111-00

Mounting arm to support AIMS / EMR display

Compatible with A-Series

Networking and USB Storage



CAT 5 Ethernet Cable, Patch, STP, 6' 0012-00-1274-06

CAT 5 Ethernet Cable, Patch, STP, 6' (1.83m)

Compatible with A-Series



CAT 5 Ethernet Cable, Crossover, STP, 6' 0012-00-1392-06

CAT 5 Ethernet Cable, Crossover, STP, 6' (1.83m)

Compatible with A-Series

**CAT 5 Ethernet Cable, Crossover, STP, 10'**

0012-00-1392-07

CAT 5 Ethernet Cable, Crossover, STP, 10' (3.05m)

Compatible with A-Series

O₂ Sensors**O₂ Sensor**

040-001270-00

O₂ Sensor, A-Series

Compatible with A-Series

**O₂ Sensor Cable and Housing**

801-0631-00102-00

O₂ Sensor Cable and Housing

Compatible with A-Series

**O₂ Sensor Cable**

801-0631-00091-00

O₂ Sensor Cable

Compatible with A-Series

Vaporizers**Dräger Vapor 2000 Isoflurane Bottle Adapter**

0004-00-0101

Isoflurane Dräger Fill Bottle Adapter

Compatible with A-Series

**Dräger Vapor 2000 Isoflurane Vaporizer**

0992-00-0149

Dräger Vapor 2000 Isoflurane Vaporizer with Dräger Fill Adapter

Compatible with A-Series



Dräger Vapor 2000 Sevoflurane Bottle Adapter

0004-00-0100

Sevoflurane Dräger Fill Bottle Adapter

Compatible with A-Series



Dräger Vapor 2000 Sevoflurane Vaporizer

0992-00-0148

Dräger Vapor Sevoflurane Vaporizer with Dräger Fill Adapter

Compatible with A-Series



Dräger D-Vapor Desflurane Vaporizer

040-001997-00

Dräger D-Vapor Desflurane Vaporizer

Compatible with A-Series



V60 Sevoflurane Vaporizer

115-025532-00

V60 Sevoflurane Vaporizer with Quick-Fil Adapter

Compatible with A-Series



V60 Quik-Fil Sevoflurane Bottle Adapter

115-026747-00

Sevoflurane Quik-Fill Bottle Adapter

Compatible with A-Series



V60 Quik-Fil Drainage Funnel for Sevoflurane Vaporizer

040-000067-00

Sevoflurane Drainage Funell for V60 Sevoflurane

Compatible with A-Series



V60 Isoflurane Vaporizer

115-025535-00

V60 Isoflurane Vaporizer with Key Filler

Compatible with A-Series



V60 Key Filler Filling Adapter for Isoflurane Bottle Adapter 040-002707-00

Isoflurane Key Filler Bottle Adapter

Compatible with A-Series

Water Traps



Dryline™ Water Trap – Adult/Pediatric 115-043022-00 / 125-000005-00

Dryline water trap, Adult/Pediatric, box of 10

Compatible with A-Series



Dryline™ Water Trap – Neonate 115-043023-00 / 125-000006-00

Dryline water trap, Neonatal, box of 10

Compatible with A-Series



Dryline™ Water Trap – Adult/Pediatric 040-002559-00

Dryline water trap, Adult/Pediatric, box of 10

Compatible with A7 (Canada sales only)



Dryline™ Water Trap – Neonate 040-002560-00

Dryline water trap, Neonatal, box of 10

Compatible with A7 (Canada sales only)

When the patient monitor is not connected to an electrical power source, you can rely on batteries for all Mindray DS USA monitors. Lithium Ion batteries offer improved performance in terms of battery runtime and recharge time.



DPM 2 Lithium Ion Battery

115-018019-00

Lithium Ion Battery for the DPM 2 pulse oximeter
Compatible with DPM 2



Lithium Ion Battery

115-018012-00

Lithium Ion Battery for the Mindray monitors, 11.1V
Compatible with DPM 6, DPM 7 (requires 2 batteries), Accutorr 3, Accutorr 7, Passport 8, Passport 12, Passport 12m, Passport 17m, A-Series



Duo Lithium Ion Battery

0146-00-0079

Lithium Ion Battery for the Duo monitor
Compatible with Duo



Power Charger Stand

0852-30-77517

Power Charger Stand includes one charger stand and one power cord
Compatible with DPM 2



Power Charging Kit

0852-30-77504

Charging kit includes one Li-ion battery, one charger stand, one power cord
Compatible with DPM 2



SLA Battery

0146-00-0043

Sealed Lead Battery, 12.0V
Compatible with Trio, Passport 2, Spectrum, Spectrum OR



T1 Lithium Ion Battery

115-018016-00

Lithium Ion Battery, 7.4V

Compatible with T1



T1 Lithium Ion Batteries

121-001220-00

Two Lithium Ion Batteries

Compatible with T1



T1 Lithium Ion Battery Charger

115-028319-00

Lithium Ion Battery Charger

Compatible with T1



Telepack Batteries

0146-00-0077-01

Batteries (Alkaline, size AA)

Compatible with Panorama Telepack



Universal Lithium Ion Battery

115-018011-00

Universal Lithium Ion Battery, 11.1V

Compatible with Accutorr Plus, Accutorr V, DPM 3, DPM 4, DPM 5, Trio, Passport 2, Passport V, Spectrum, Spectrum OR



V-Series Battery

115-018013-00

Lithium Ion Battery for V12 and V21 patient monitors

Compatible with V12, V21

TD/TM Rechargeable Battery Pack

115-030107-00

Rechargeable Battery Pack for TD60

Compatible with TD60, TM80



2 AA Battery Holder

115-030105-00

Battery Holder for 2AA Batteries (batteries not included), 3/box

Compatible with TD60



3 AA Battery Holder

115-030106-00

Battery Holder for 3 AA Batteries (batteries not included), 3/box

Compatible with TD60, TM80



Type A Serial Port Cable

009-001767-00

Type A serial port adapter cable / male to female

Compatible with Passport 12m, Passport 17m



Type B Serial Port Cable

009-001768-00

Type B serial port adapter cable / male to male

Compatible with Passport 12m, Passport 17m



Type C Serial Port Cable

009-001769-00

Type C serial port adapter cable / male to male

Compatible with Passport 12m, Passport 17m



Type D Serial Port Cable

009-002943-00

Type D serial port adapter cable / 9-pin to 15-pin

Compatible with Passport 12m, Passport 17m



Type E Serial Port Cable

009-004613-00

Type E serial port adapter cable / 9-pin to RJ45 connector

Compatible with Passport 12m, Passport 17m

Cardiac Output Cables



Cardiac Output Y Cable

0012-00-1447-01

Cable, Cardiac Output Y, two Temperature connections

Compatible with Spectrum, Spectrum OR, V12, V21



Cardiac Output Y Cable, 12 Pin

0010-30-42743

Cable, Cardiac Output Y, two Temperature connections

Compatible with DPM 6, DPM 7, Passport 8, Passport 12, Passport 12m, Passport 17m



Edwards Lifesciences Bath Probe Adapter

0012-00-1519

Cable, Cardiac Output Edwards Lifesciences Bath probe adapter

Compatible with Spectrum, Spectrum OR, V12, V21, Passport 8, Passport 12, Passport 12m, Passport 17m, DPM 6, DPM 7



Edwards Lifesciences In-line Injectate Adapter

0012-00-1520

Cable, Cardiac Output Edwards Lifesciences in-line injectate adapter

Compatible with Spectrum, Spectrum OR, V12, V21, DPM 6, DPM 7, Passport 8, Passport 12, Passport 12m, Passport 17m

Adapters**Dryline™ Airway Adapter – Elbow**

9000-10-07487 / 115-043021-00

Dryline airway adapter, elbow, box of 10

Compatible with DPM 4, DPM 5, DPM 6, DPM 7, Passport V, Passport 12, Passport 12m, Passport 17m, T1

**Dryline™ Airway Adapter – Straight**

115-043020-00

Dryline airway adapter, straight, box of 10

Compatible with DPM 4, DPM 5, DPM 6, DPM 7, Passport V, Passport 12, Passport 12m, Passport 17m, T1

**Mindray Low Flow Sidestream CO₂ Adapter**

045-003134-00

Low flow sidestream adapter connects the Accutorr 7 to Covidien Microstream filterlines

Compatible with Accutorr 7

Cannulas**Nasal Cannula – Adult**

115-043001-00

CO₂ Nasal sample cannula, Adult with 7' line, box of 25

Compatible with DPM 4, DPM 5, DPM 6, DPM 7, Passport V, Passport 8, Passport 12m, Passport 17m, T1

**Nasal Cannula – Pediatric**

115-043002-00

CO₂ Nasal sample cannula, Pediatric with 7' line, box of 25

Compatible with DPM 4, DPM 5, DPM 6, DPM 7, Passport V, Passport 8, Passport 12, Passport 12m, Passport 17m, T1

**Nasal Cannula – Infant**

115-043003-00

CO₂ Nasal sample cannula, Infant with 7' line, box of 25

Compatible with DPM 4, DPM 5, DPM 6, DPM 7, Passport V, Passport 8, Passport 12, Passport 12m, Passport 17m, T1



Nasal Cannula – CO₂/O₂

0683-00-0452-25

Nasal Cannula, CO₂/O₂, 7' (2.1m), box of 25

Compatible with Passport V, Gas Module 3

Kits – DPM™ Sidestream CO₂



CO₂ Kit – Adult

6800-30-50618

DPM Sidestream CO₂ Kit, Adult

Compatible with DPM 4, DPM 5, DPM 6, DPM 7, Passport V, Passport 8, Passport 12, Passport 12m, Passport 17m



CO₂ Kit – Neonate

6800-30-50467

DPM Sidestream CO₂ Kit, Neonate

Compatible with DPM 4, DPM 5, DPM 6, DPM 7, Passport V, Passport 8, Passport 12, Passport 12m, Passport 17m

Sampling Lines



Sampling Line – Adult

115-043017-00

Sampling line, Adult, 8.2' (2.5 m), box of 25

Compatible with DPM 4, DPM 5, DPM 6, DPM 7, Passport V, Passport 12, Passport 12m, Passport 17m, T1



Sampling Line – Neonate

115-043018-00

Sampling line, Neonatal, 8.2' (2.5 m), box of 25

Compatible with DPM 4, DPM 5, DPM 6, DPM 7, Passport V, Passport 12, Passport 12m, Passport 17m, T1

Water Traps**Dryline™ Water Trap – Adult/Pediatric**

115-043022-00 / 125-000005-00

Dryline water trap, Adult/Pediatric, box of 10

Compatible with DPM 4, DPM 5, DPM 6, DPM 7, Passport V, Passport 8, Passport 12, Passport 12m, Passport 17m, T1

**Dryline™ II Water Trap, Single Slot (1x) – Adult/Pediatric**

115-043024-00 / 115-058733-00

Dryline water trap used with the 1x Sidestream CO₂ module, Adult/Pediatric, box of 10

Compatible with Passport 8, Passport 12, Passport 12m, Passport 17m, T1

**Dryline™ Water Trap – Neonate**

115-043023-00 / 125-000006-00

Dryline water trap, Neonatal, box of 10

Compatible with DPM 4, DPM 5, DPM 6, DPM 7, Passport V, Passport 8, Passport 12, Passport 12m, Passport 17m, T1

**Dryline™ II Water Trap, Single Slot (1x) – Neonate**

115-043025-00 / 115-058734-00

Dryline water trap used with the 1x Sidestream CO₂ module, Neonatal, box of 10

Compatible with Passport 8, Passport 12, Passport 12m, Passport 17m, T1

Data Storage Cards



CF storage card (4GB)

023-000846-00

CF storage card (4GB)

Compatible with DPM 6, DPM 7, Passport 12m, Passport 17m



USB

023-000996-00

USB for settings transfer between monitors

Compatible with T1



USB

023-001673-00

USB for settings transfer between monitors

Compatible with A-Series, Accutorr 7, Passport 8, Passport 12, Passport 12m, Passport 17m

Cables

**3/5 Lead ECG Cable, N/T, 10'**

009-005266-00

3/5 Lead ECG Cable, N/T, 10' Used with lead wires: 009-004771-00, 009-004772-00, 009-004765-00, 009-004766-00, 009-004782-00, 009-004783-00, 009-004786-00, 009-004787-00, 115-032955-00, 115-032954-00

Compatible with Passport 8, Passport 12, Passport 12m, Passport 17m, T1

3/5 Lead ECG Cable, N/T, 20'

009-005267-00

3/5 Lead ECG Cable, N/T, 20' Used with lead wires: 009-004771-00, 009-004772-00, 009-004765-00, 009-004766-00, 009-004782-00, 009-004783-00, 009-004786-00, 009-004787-00, 115-032955-00, 115-032954-00

Compatible with Passport 8, Passport 12, Passport 12m, Passport 17m, T1

**3/5 Lead ECG Cable, 6 pin**

0010-30-42782

ECG Cable: 3/5 Lead, Adult/Pediatric, 6 Pin, Defib-Proof, AHA/IEC, 10'
Used with lead wires: 0010-30-42726, 0010-30-42731, 0010-30-42734, 0010-30-42727, 0010-30-42729

Compatible with DPM 4, DPM 5

**3/5 Lead ECG Cable, 12 pin**

0010-30-42719

ECG Cable: 3/5 Lead, Adult/Pediatric, 12 Pin, Defib-Proof, AHA/IEC, 10'
Used with lead wires: 0010-30-42726, 0010-30-42731, 0010-30-42734, 0010-30-42727, 0010-30-42729

Compatible with DPM 6, DPM 7, Passport 8, Passport 12, Passport 12m, Passport 17m, T1

**3/5 Lead ECG Cable, 10'**

0012-00-1745-01

ECG Cable: 3/5 Lead, 10' (3.1 m), reusable
Used with lead wires: 0012-00-1514-03, 0012-00-1514-02, 0012-00-1514-05, 0012-00-1514-06, 0012-00-1503-05, 0012-00-1503-06, 040-000748-01, 040-000746-01

Compatible with Passport V, V12, V21

**3/5 Lead ECG Cable, 10'**

0012-00-1255-01

ECG Cable, 3/5 Lead, 10' (3.1 m), reusable
Used with lead wires: 0012-00-1262-02, 0012-00-1262-03, 0012-00-1262-08, 0012-00-1262-09, 0012-00-1261-07, 0012-00-1261-08, 0012-00-1261-09

Compatible with Trio, Passport 2, Spectrum, Spectrum OR

**6 Lead ECG Cable, 10'**

0012-00-1746-01

ECG Cable 6 Lead, 10'

Compatible with V12, V21

**6 Lead ECG Cable, 20'**

0012-00-1746-02

ECG Cable, 6 Lead, 20'

Compatible with V12, V21

**Mobility ECG Cable, 10'**

0012-00-1502-01

Mobility ECG Cable, 10', AAMI

Used with lead wires: 0012-00-1514-03, 0012-00-1514-02, 0012-00-1514-05, 0012-00-1514-06, 0012-00-1503-05, 0012-00-1503-06, 040-000748-01, 040-000746-01

Compatible with Passport 2, Spectrum, Spectrum OR

**Mobility ECG Cable, 20'**

0012-00-1502-02

Mobility ECG Cable, 20', AAMI

Used with lead wires: 0012-00-1514-03, 0012-00-1514-02, 0012-00-1514-05, 0012-00-1514-06, 0012-00-1503-05, 0012-00-1503-06, 040-000748-01, 040-000746-01

Compatible with Passport 2, Spectrum, Spectrum OR

**3/5 Lead ECG Mobility Cable, 12 pin**

040-001416-00

ECG Cable, Adult/Pediatric, connects to the mobility lead wires (0012-00-1514-03, 0012-00-1514-02, 0012-00-1514-05, 0012-00-1514-06, 0012-00-1503-05, 0012-00-1503-06) and to single patient use lead wires (040-000746-01, 040-000748-01)

Compatible with DPM 6, DPM 7, Passport 8, Passport 12, Passport 12m, Passport 17m, T1

**12 Lead ECG Cable**

0010-30-42721

ECG Cable, 12 Lead, Adult, defib proof, AHA

Compatible with DPM 6, DPM 7, T1, Passport 12m, Passport 17m, T1

**3/ 5 Lead ESIS ECG Cable, N/T, 10'**

009-005268-00

3/5 Lead ECG Cable, N/T, 10' used with lead wires: 009-004771-00, 009-004772-00, 009-004765-00, 009-004766-00, 009-004782-00, 009-004783-00, 009-004786-00, 009-004787-00, 115-032955-00, 115-032954-00

Compatible with , Passport 8, Passport 12, Passport 12m, Passport 17m, T1

3/5 Lead ESIS ECG Cable, N/T, 20'

009-005269-00

3/5 Lead ECG Cable, N/T, 20' used with lead wires: 009-004771-00, 009-004772-00, 009-004765-00, 009-004766-00, 009-004782-00, 009-004783-00, 009-004786-00, 009-004787-00, 115-032955-00, 115-032954-00

Compatible with , Passport 8, Passport 12, Passport 12m, Passport 17m, T1

ESIS Cables

**3/5 Lead ESIS ECG Cable, 12 pin**

0010-30-42723

ECG Cable: 3/5 Lead, Adult/Pediatric, 12 Pin, ESU-Proof, AHA/IEC, 10'

Used with lead wires: 0010-30-42726, 0010-30-42731, 0010-30-42734, 0010-30-42727, 0010-30-42729

Compatible with DPM 6, DPM 7, Passport 8, Passport 12, Passport 12m, Passport 17m, T1

**3/5 Lead ECG Mobility Cable, ESIS, 12 pin**

009-003652-00

ECG cable connects to the mobility lead wires

Used with lead wires: 0012-00-1514-03, 0012-00-1514-02, 0012-00-1514-05, 0012-00-1514-06, 0012-00-1503-05, 0012-00-1503-06, 040-000748-01, 040-000746-01

Compatible with DPM 6, DPM 7, Passport 8, Passport 12, Passport 12m, Passport 17m, T1

**3/5 Lead ESIS ECG Cable, 10'**

0012-00-1745-03

ECG Cable, 3/5 Lead, ESIS, 10' (3.1 m), Reusable

Used with lead wires: 0012-00-1514-03, 0012-00-1514-02, 0012-00-1514-05, 0012-00-1514-06, 0012-00-1503-05, 0012-00-1503-06, 040-000748-01, 040-000746-01

Compatible with Passport V, V12, V21

**3/5 Lead ESIS ECG Cable, 20'**

0012-00-1745-04

ECG Cable, 3/5 Lead, ESIS, 20' (3.1 m), Reusable

Used with lead wires: 0012-00-1514-03, 0012-00-1514-02, 0012-00-1514-05, 0012-00-1514-06, 0012-00-1503-05, 0012-00-1503-06, 040-000748-01, 040-000746-01

Compatible with Passport V, V12, V21

**3/5 Lead ESIS ECG Cable - 10'**

0012-00-1255-05

ECG Cable, 3/5 Lead, Straight, ESIS 10' (3.1 m)

Used with lead wires: 0012-00-1262-02, 0012-00-1262-03, 0012-00-1262-08, 0012-00-1262-09, 0012-00-1261-07, 0012-00-1261-08, 0012-00-1261-09

Compatible with Passport 2, Spectrum, Spectrum OR

**6 Lead ECG ESIS Cable, 10'**

0012-00-1746-03

ECG Cable 6 Lead, 10', ESIS

Compatible with V12, V21

**Mobility ESIS ECG Cable, 10'**

0012-00-1502-03

Mobility ECG Cable, ESIS, 10', AAMI

Used with lead wires: 0012-00-1514-03, 0012-00-1514-02, 0012-00-1514-05, 0012-00-1514-06, 0012-00-1503-05, 0012-00-1503-06, 040-000748-01, 040-000746-01

Compatible with Passport 2, Spectrum, Spectrum OR



Mobility ESIS ECG Cable, 20'

0012-00-1502-04

Mobility ECG Cable, ESIS, 20', AAMI
Used with lead wires: 0012-00-1514-03, 0012-00-1514-02, 0012-00-1514-05,
0012-00-1514-06, 0012-00-1503-05, 0012-00-1503-06, 040-000748-01, 040-000746-01

Compatible with Passport 2, Spectrum, Spectrum OR

Neonate Cables



Neonate ECG Cable

040-000072-00

ECG Cable, Neonatal, 3 Lead, 20' (6.1 m), Reusable
Used with 0681-00-0098-01, 0681-00-0098-02

Compatible with Passport V, V12, V21



Neonate ECG Cable, 6 pin

0010-30-12377

ECG Cable: 3 Lead, Neonatal, 6 Pin, Defib-Proof, PTU, reusable, 10'
Used with lead wires: 0010-30-42896

Compatible with DPM 4, DPM 5



Neonate ECG Cable - 12 pin

0010-30-42720

ECG Cable: 3 Lead, Pediatric/Neonatal, 12 Pin, Defib-Proof, reusable, 10'
Used with lead wires: 0010-30-42896

Compatible with DPM 6, DPM 7, Passport 8, Passport 12, Passport 12m, Passport 17m, T1



Neonate ECG Cable - 12 pin

040-000754-00

3 Lead ECG trunk cable for use with prewired neonate electrodes, 12 Pin, Defib-Proof, AHA
Used with lead wires: 0681-00-0098-01, 0681-00-0098-02

Compatible with DPM 6, DPM 7, Passport 8, Passport 12, Passport 12m, Passport 17m, T1



Neonate/Pediatric ESIS ECG Cable - 12 pin

0010-30-42724

ECG Cable: 3 Lead, Pediatric/Neonatal, 12 Pin, ESU-Proof, reusable, 10'
Used with lead wires: 0010-30-42896

Compatible with DPM 6, DPM 7, Passport 8, Passport 12, Passport 12m, Passport 17m, T1

Cable Adapter



ECG Cable Adapter - 12 pin to 6 pin

0010-30-43054

ECG Cable Adapter, 12 pin to 6 pin. Allows the use of DPM 4 and
DPM 5 ECG cables with the DPM 6 and DPM 7 monitors

Compatible with DPM 6, DPM 7

Electrodes

**ECG Adult Electrodes**

0010-10-12304

ECG Electrodes: Adult, 10 pcs/pack, Kendall

Compatible with DPM 4, DPM 5, DPM 6, DPM 7, DPM CS, V12, V21, Passport 8, Passport 12, Passport 12m, Passport 17m, T1, TM80, TD60

**ECG Radio Opaque Neonate Electrodes**

0681-00-0098-01

Radio Opaque, Neonatal Pre-wired, 3 Lead ECG Electrodes, AAMI, 18" (45.7cm)
(Box of 100 packs; each pack contains 3 electrodes)

Compatible with DPM 6, DPM 7, Passport 2, Passport V, Spectrum, Spectrum OR, V12, V21, Passport 8, Passport 12, Passport 12m, Passport 17m, T1

**ECG Translucent Neonate Electrodes**

0681-00-0098-02

Radio Translucent, Neonatal Pre-wired, 3 Lead ECG Electrodes, AAMI,
18" (45.7 cm) Box of 100 Packs (each pack contains 3 electrodes)

Compatible with DPM 6, DPM 7, Passport 2, Passport V, Spectrum, Spectrum OR, V12, V21, Passport 8, Passport 12, Passport 12m, Passport 17m, T1

**Pre-gelled Hydrogel ECG Electrodes**

0681-00-0100-01

Disposable pre-gelled ECG Electrodes, foam base and Hydrogel
conductive adhesive. (1 case of 600 containing 10 boxes of 60)Compatible with Trio, Panorama, Passport 2, Passport V, Spectrum,
Spectrum OR, V12, V21

Lead Wires – 3 Lead Pinch

**3 Lead ECG Pinch Clip Lead Wires - Adult /Pediatric**

0010-30-42726

3 Lead ECG wires, Clip, Adult/Pediatric, TPU, AHA, 24"

Compatible with DPM 4, DPM 5, DPM 6, DPM 7, Passport 8, Passport 12, Passport 12m,
Passport 17m, T1**3 Lead ECG Pinch Clip Lead Wires - Adult /Pediatric**

0010-30-42731

3 Lead ECG wires, Clip, Adult/Pediatric, AHA, 36"

Compatible with DPM 4, DPM 5, DPM 6, DPM 7, Passport 8, Passport 12, Passport 12m,
Passport 17m, T1**3 Lead ECG Pinch Clip Lead Wires - Neonate**

0010-30-42896

3 Lead ECG wires, Clip, Neonatal/Infant, 36"

Compatible with DPM 4, DPM 5, DPM 6, DPM 7, Passport 8, Passport 12, Passport 12m,
Passport 17m, T1



3 Lead Mobility ECG Pinch Clip Lead Wires - 24" 0012-00-1514-05

ECG Mobility Lead Wires, 3 Lead, Pinch, 24" (61.0 cm) Reusable, AAMI

Compatible with DPM6, DPM7, Panorama Telepack, Passport 2, Passport V, Spectrum, Spectrum OR, V12, V21, Passport 8, Passport 12, Passport 12m, Passport 17m, T1



3 Lead Mobility ECG Pinch Clip Lead Wires - 36" 0012-00-1514-06

ECG Mobility Lead Wires, 3 Lead, Pinch, 36" (101.6 cm) Reusable, AAMI

Compatible with DPM6, DPM7, Panorama Telepack, Passport 2, Passport V, Spectrum, Spectrum OR, V12, V21, Passport 8, Passport 12, Passport 12m, Passport 17m, T1



3 Lead ECG Pinch Clip Lead Wires - 24" 0012-00-1262-08

Lead Wires, 3 Lead, Pinch Clip 24" (61.0 cm), AAMI

Compatible with Trio, Passport 2, Spectrum, Spectrum OR



3 Lead ECG Pinch Clip Lead Wires - 40" 0012-00-1262-09

Lead Wires, 3 Lead, Pinch Clip 40" (101.6 cm), AAMI

Compatible with Trio, Passport 2, Spectrum, Spectrum OR

3 Lead ECG Pinch Clip Lead Wires 115-004871-00

Lead Wires, 3 Lead, Pinch Clip

Compatible with Tel-200



3 Lead N/T ECG Pinch Clip Lead Wires - 24" 009-004771-00

ECG Mobility Lead Wires, 3 Lead, Pinch, AHA, 24"

Compatible with TD60



3 Lead N/T ECG Pinch Clip Lead Wires - 36" 009-004772-00

ECG Mobility Lead Wires, 3 Lead, Pinch, AHA, 36"

Compatible with TD60

Lead Wires – 3 Lead Snap**3 Lead ECG Snap Lead Wires - Adult/Pediatric**

0010-30-42734

3 Lead ECG Wires, Snap, Adult/Pediatric, 36"

Compatible with DPM 4, DPM 5, DPM 6, DPM 7, Passport 8, Passport 12, Passport 12m, Passport 17m, T1

**3 Lead Mobility ECG Snap Lead Wires - 24"**

0012-00-1503-05

ECG Mobility Lead Wires, 3 Lead, Snap, 24" (61.0 cm), Reusable, AAMI

Compatible with DPM 6, DPM 7, Panorama Telepack, Passport 2, Passport V, Spectrum, Spectrum OR, V12, V21, Passport 8, Passport 12, Passport 12m, Passport 17m, T1

**3 Lead Mobility ECG Snap Lead Wires - 36"**

0012-00-1503-06

ECG Mobility Lead Wires, 3 Lead, Snap, 36" (101.6 cm), Reusable, AAMI

Compatible with DPM 6, DPM 7, Panorama Telepack, Passport 2, Passport V, Spectrum, Spectrum OR, V12, V21, Passport 8, Passport 12, Passport 12m, Passport 17m, T1

**3 Lead ECG Snap Lead Wires - 18"**

0012-00-1261-07

Lead Wires, 3 Lead, Snap 18" (45.7 cm), AAMI

Compatible with Trio, Passport 2, Spectrum, Spectrum OR

**3 Lead ECG Snap Lead Wires - 24"**

0012-00-1261-08

Lead Wires, 3 Lead, Snap 24" (61.0 cm), AAMI

Compatible with Trio, Passport 2, Spectrum, Spectrum OR

**3 Lead ECG Snap Lead Wires - 40"**

0012-00-1261-09

Lead Wires, 3 Lead, Snap 40" (101.6 cm), AAMI

Compatible with Trio, Passport 2, Spectrum, Spectrum OR

**3 Lead ECG Snap Lead Wires**

115-004867-00

Lead Wires, 3 Lead, Snap

Compatible with Tel-200



3 Lead N/T ECG Snap Lead Wires - 24"

009-004765-00

ECG Mobility Lead Wires, 3 Lead, Snap, AHA, 24"

Compatible with TD60, TM80, Passport 8, Passport 12, Passport 12m, Passport 17m, T1



3 Lead N/T ECG Snap Lead Wires - 36"

009-004766-00

ECG Mobility Lead Wires, 3 Lead, Snap, AHA, 36"

Compatible with TD60, TM80, Passport 8, Passport 12, Passport 12m, Passport 17m, T1

Lead Wires – 5 Lead Pinch



5 Lead ECG Pinch Lead Wires - Adult/Pediatric

0010-30-42727

5 Lead ECG Wires, Clip, Adult/Pediatric, 36"

Compatible with DPM 4, DPM 5, DPM 6, DPM 7, Passport 8, Passport 12, Passport 12m, Passport 17m, T1



5 Lead ECG Pinch Lead Wires - Adult/Pediatric

0010-30-42729

5 Lead ECG Wires, Clip, Adult/Pediatric, 36"

Compatible with DPM 4, DPM 5, DPM 6, DPM 7, Passport 8, Passport 12, Passport 12m, Passport 17m, T1



5 Lead Mobility ECG Pinch Lead Wires - 24"

0012-00-1514-02

ECG Mobility Lead Wires, 5 Lead, Pinch, 24" (61.0 cm) Reusable, AAMI

Compatible with DPM 6, DPM 7, Panorama, Passport 2, Passport V, Spectrum, Spectrum OR, V12, V21, Passport 8, Passport 12, Passport 12m, Passport 17m, T1



5 Lead Mobility ECG Pinch Lead Wires - 36"

0012-00-1514-03

ECG Mobility Lead Wires, 5 Lead, Pinch, 36" (101.6 cm) Reusable, AAMI

Compatible with DPM 6, DPM 7, Panorama, Passport 2, Passport V, Spectrum, Spectrum OR, V12, V21, Passport 8, Passport 12, Passport 12m, Passport 17m, T1



5 Lead ECG Pinch Lead Wires - 24"

0012-00-1262-02

Lead Wires, 5 Lead, Pinch Clip 24" (61.0 cm), AAMI

Compatible with Trio, Passport 2, Spectrum, Spectrum OR



5 Lead ECG Pinch Lead Wires - 40"

0012-00-1262-03

Lead Wires, 5 Lead, Pinch Clip 40" (101.6 cm), AAMI

Compatible with Trio, Passport 2, Spectrum, Spectrum OR



5 Lead ECG Pinch Lead Wires

115-004873-00

Lead Wires, 5 Lead, Pinch

Compatible with Tel-200



5 Lead N/T ECG Pinch Lead Wires - 24"

009-004786-00

ECG Mobility Lead Wires, 5 Lead, Pinch, AHA, 24"

Compatible with TD60, TM80, Passport 8, Passport 12, Passport 12m, Passport 17m, T1



5 Lead N/T ECG Pinch Lead Wires - 36"

009-004787-00

ECG Mobility Lead Wires, 5 Lead, Pinch, AHA, 36"

Compatible with TD60, TM80, Passport 8, Passport 12, Passport 12m, Passport 17m, T1

Lead Wires – 5 Lead Snap



5 Lead ECG Snap Lead Wires - Adult/Pediatric

0010-30-42735

5-Lead ECG Wires, Snap, Adult

Compatible with DPM 4, DPM 5, DPM 6, DPM 7, Passport 8, Passport 12, Passport 12m, Passport 17m, T1



5 Lead Mobility ECG Snap Lead Wires - 24"

0012-00-1503-02

ECG Mobility Lead Wires, 5 Lead, Snap 24" (61.0 cm) AAMI

Compatible with DPM 6, DPM 7, Panorama, Passport 2, Passport V, Spectrum, Spectrum OR, V12, V21, Passport 8, Passport 12, Passport 12m, Passport 17m, T1



5 Lead Mobility ECG Snap Lead Wires - 36"

0012-00-1503-03

ECG Mobility Lead Wires, 5 lead, Snap, 36" (101.6 cm), Reusable, AAMI

Compatible with DPM 6, DPM 7, Panorama, Passport 2, Passport V, Spectrum, Spectrum OR, V12, V21, Passport 8, Passport 12, Passport 12m, Passport 17m, T1



5 Lead ECG Snap Lead Wires - 24" 0012-00-1261-02

Lead Wires, 5 Lead, Snap 24" (61.0 cm), AAMI
 Compatible with Trio, Passport 2, Spectrum, Spectrum OR



5 Lead ECG Snap Lead Wires - 40" 0012-00-1261-03

Lead Wires, 5 Lead, Snap 40" (101.6 cm), AAMI
 Compatible with Trio, Passport 2, Spectrum, Spectrum OR



5 Lead ECG Snap Lead Wires - Extended Leg 0012-00-1261-13

Lead Wires, 5 Lead, Snap, Extended Leg, 3/40", 2/60", AAMI
 Compatible with Trio, Passport 2, Spectrum, Spectrum OR



5 Lead ECG Snap Lead Wires 115-004869-00

Lead Wires, 5 Lead, Snap
 Compatible with Tel-200



5 Lead N/T ECG Snap Lead Wires - 24" 009-004782-00

ECG Mobility Lead Wires, 5 Lead, Snap, AHA, 24"
 Compatible with TD60, TM80, Passport 8, Passport 12, Passport 12m, Passport 17m, T1



5 Lead N/T ECG Snap Lead Wires - 36" 009-004783-00

ECG Mobility Lead Wires, 5 Lead, Snap, AHA, 36"
 Compatible with TD60, TM80, Passport 8, Passport 12, Passport 12m, Passport 17m, T1

Lead Wires – 6 Lead



6 Lead ECG Pinch Lead Wires - 36" 0012-00-1816-03

ECG Lead Wire Set, 6 Lead, Pinch, 36" (91.44 cm), AAMI
 Compatible with V12, V21



6 Lead ECG Snap Lead Wires - 24"

0012-00-1773-02

ECG Lead Wire Set, 6 Lead, Snap, 24" (61.0 cm), AAMI

Compatible with V12, V21

Lead Wires – 12 Lead


5 Lead ECG Pinch Extended Lead Wires - 24"

0012-00-1820-02

5 Lead Extended Lead Set Pinch 24", AAMI
(for use with 12 lead cable)"

Compatible with V12, V21



5 Lead ECG Pinch Extended Lead Wires - 36"

0012-00-1820-03

5 Lead Extended Lead Set Pinch 36", AAMI
(for use with 12 lead cable)"

Compatible with V12, V21



5 Lead ECG Snap Extended Lead Wires - 24"

0012-00-1818-02

5 Lead Extended Lead Set Snap 24", AAMI
(for use with 12 lead cable)"

Compatible with V12, V21



5 Lead ECG Snap Extended Lead Wires - 36"

0012-00-1818-03

5 Lead Extended Lead Set Snap 36", AAMI
(for use with 12 lead cable)"

Compatible with V12, V21



12 Lead ECG Lead Wires

0012-00-1411-02

Lead Wire Set for 12 Lead ECG Monitoring, AAMI

Compatible with Passport 2, Spectrum



12 Lead ECG Lead Wires, Chest

0010-30-42908

Lead Wires, Chest, for 12 Lead ECG Monitoring

Compatible with DPM6, DPM7, Passport 12m, Passport 17m, T1

12-Lead ECG Lead Wires, Chest, Clip 0010-30-42904

Lead Wires, pinch/clip, Chest, for 12 Lead ECG Monitoring
 Compatible with DPM6, DPM7, Passport 12m, Passport 17m, T1



12 Lead ECG Lead Wires, Limb 0010-30-42906

Lead Wires, Limb, for 12 Lead ECG Monitoring
 Compatible with DPM6, DPM7, Passport 12m, Passport 17m, T1

12-Lead ECG Lead Wires, Limb, Clip 0010-30-42902

Lead Wires, pinch/clip, Limb, for 12 Lead ECG Monitoring
 Compatible with DPM6, DPM7, Passport 12m, Passport 17m, T1

Single Patient Use Lead Wires

3 Lead Disposable ECG Snap Lead Wires - 24" 040-000748-01

3 Lead Disposable ECG Snap Lead Wires, Single Patient Use, AAMI, 24", 20/box
 Compatible with Panorama Telepack, V12, V21, DPM 6, DPM 7, Passport V, Passport 2, Spectrum, Passport 8, Passport 12, Passport 12m, Passport 17m, T1



5 Lead Disposable ECG Snap Lead Wires - 24" 040-000746-01

5 Lead Disposable ECG Snap Lead Wires, Single Patient Use, AAMI, 24", 20/box
 Compatible with Panorama Telepack, V12, V21, DPM 6, DPM 7, Passport V, Passport 2, Spectrum, Passport 8, Passport 12, Passport 12m, Passport 17m, T1



3 Lead Disposable N/T ECG Snap Lead Wires - 24" 115-032954-00

3 Lead Disposable ECG Snap Lead Wires, Single Patient Use, AHA, 24", 20/box
 Compatible with TD60, TM80, Passport 8, Passport 12, Passport 12m, Passport 17m, T1



5 Lead Disposable N/T ECG Snap Lead Wires - 24" 115-032955-00

5 Lead Disposable ECG Snap Lead Wires, Single Patient Use, AHA, 24", 20/box
 Compatible with TD60, TM80, Passport 8, Passport 12, Passport 12m, Passport 17m, T1



IBP Cables



Becton Dickinson IBP Cable - 6 Pin

001C-30-70758

6 Pin IBP Cable (for Becton Dickinson)

Compatible with DPM 4, DPM 5



Becton Dickinson IBP Cable - 12 Pin

001C-30-70757

12 Pin IBP Cable (for Becton Dickinson)

Compatible with DPM 6, DPM 7, Passport 8, Passport 12, Passport 12m, Passport 17m, T1



Becton Dickinson IBP Cable

040-000053-00

IBP Cable, Becton Dickinson P10EZ-1, P23XL-1, DTX/Plus, 12ft

Compatible with Passport V, V12, V21



Double-end IBP Extension Cable

040-001029-00

IBP extended cable with dual-receptacle used to support the double-channel IBP function

Compatible with Passport 8, Passport 12, Passport 12m, Passport 17m, T1



Edwards IBP Cable - 6 Pin

0010-21-43094

6 Pin IBP Cable for Edwards

Compatible with DPM 4, DPM 5



Edwards IBP Cable - 12 Pin

0010-21-12179

12 Pin IBP Cable for Edwards

Compatible with DPM 6, DPM 7, Passport 8, Passport 12, Passport 12m, Passport 17m, T1



Edwards IBP Cable

040-000054-00

IBP Cable, Edwards Life Sciences TruWave PX, 12'

Compatible with Passport V, V12, V21



Hospira IBP Cable - 6 Pin 001C-30-70760

6 Pin IBP Cable (for Hospira)
Compatible with DPM 4, DPM 5



Hospira IBP Cable - 12 Pin 001C-30-70759

12 Pin IBP Cable (for Hospira)
Compatible with DPM 6, DPM 7, Passport 8, Passport 12, Passport 12m, Passport 17m, T1



Hospira IBP Cable 040-000052-00

IBP Cable, Hospira Transpac IV, 12'
Compatible with Passport V, V12, V21



IBP Cable Adapter 0010-20-42795

IBP cable adapter (12 pin to 6 pin)
Compatible with DPM 6, DPM 7, Passport 8, Passport 12, Passport 12m, Passport 17m, T1



IBP Interface Cable 0012-00-1245

Cable, Interface, Transducer
Compatible with Trio, Passport 2, Spectrum, Spectrum OR



Memscap IBP Cable - 6 Pin 0010-21-43081

6 Pin IBP Cable for Memscap (SP844 transducer)
Compatible with DPM 4, DPM 5



Memscap IBP Cable - 12 Pin 0010-21-43082

12 Pin IBP Cable for Memscap (SP844 transducer)
Compatible with DPM 6, DPM 7, Passport 8, Passport 12, Passport 12m, Passport 17m, T1

Bar Code Scanners



Accutorr 7 Bar Code Scanner

115-039575-00

2D Bar Code Scanner

Compatible with Accutorr 7

Telemetry Bags



Disposable DPM™ CS Telemetry Pouch

0152-10-39878

Disposable Transmitter Bag protects the DPM CS Telepack

Compatible with DPM CS Ambulatory Telepack



Disposable Panorama Telepack Pouch

0202-00-0179-02

Disposable Panorama Telepack Pouch , pkg 25

Compatible with Panorama Telepack



Disposable TD60/TM80 Pouch

115-032957-00

Disposable Pouch protects TD60, pkg 25

Compatible with TD60, TM80

AC/DC Adapter



AC/DC Adapter

022-000059-00

AC/DC Adapter

Compatible with T1

Adapter Cables



Analog Out Interface Cable

0012-00-1801-01

Terminated pigtail cable – IABP sync cable

Compatible with V12, V21, Passport 12m, Passport 17m, DPM6, DPM7



Analog Output Cable

009-003117-00

Analog output cable

Compatible with Passport 8, Passport 12



Continuous Cardiac Output / SVO₂ Cable

009-000259-00

CCO/SvO₂ link interface replacement cable

Compatible with Passport 12m, Passport 17m



Multifunction Analog Output Cable

009-002944-00

Multi-function analog output cable, IABP analog output cable

Compatible with T1



Synchronization Cable

009-003118-00

Synchronization Cable

Compatible with Passport 8, Passport 12



Unterminated Pigtail Cable for Analog Out

0012-00-1801-02

Unterminated pigtail cable for analog out (outputs 5 signals: IBP1, IBP2, ECG, defib sync & ground)

Compatible with V12, V21

Communication Cable



PC Communication Cable

0850-20-30725

1 PC communication cable

Compatible with DPM 1, DPM 2

Defib Cables



Defib Sync Cable

009-000027-00

Defibrillator synchronization cable

Compatible with DPM 6, DPM 7, Passport 12m, Passport 17m



Defib Sync Cable

009-003249-00

Defibrillator synchronization cable, 12 pin

Compatible with T1

Docking Station Cables

T1 Docking Station Cable, 1m

009-003591-00

Cable connects the T1 to the T1 docking station

Compatible with T1

T1 Docking Station Cable, 4m

009-003592-00

Cable connects the T1 to the T1 docking station

Compatible with T1

Ethernet (CS1) Cables



CAT 5 Ethernet Cable, Crossover, 6' 0012-00-1392-06

CAT 5 Ethernet Cable, Crossover, STP, 6' (1.83 m)

Compatible with Passport 2, Passport V, Spectrum, Spectrum OR, V12, V21



CAT 5 Ethernet Cable, Patch, 6' 0012-00-1274-01

CAT 5 Ethernet Cable, Patch, STP, 6' (1.83m)

Compatible with Passport 2, Passport V, Spectrum, Spectrum OR, V12, V21

Gas Module Cables



Serial Port to Gas Module Cable, 1' 0012-00-1276-01

Cable, Serial Port to Gas Module, 1' (0.3 m)

Compatible with Passport 2, Passport V, Spectrum, Spectrum OR



Serial Port to Gas Module Cable, 6' 0012-00-1276-02

Cable, Serial Port to Gas Module, 6' (1.8 m)

Compatible with Passport 2, Passport V, Spectrum, Spectrum OR

Grounding Cable



Grounding Cable 1000-21-00122

Grounding Cable

Compatible with DPM 4, DPM 5, DPM 6, DPM 7, Passport 12m, Passport 17m

IABP Cables



Analog Output Cable (IABP) 6800-20-50146

Analog output cable for Intra-aortic balloon pump

Compatible with DPM6, DPM7, Passport 12m, Passport 17m



IABP Interface Cable, V-Series

0012-00-1801-01

IABP Interface Cable

Compatible with V12, V21

Nurse Call Cables



Nurse Call Cable

8000-21-10361

Nurse Call Cable

Compatible with Accutorr V, DPM 3, DPM 4, DPM 5, DPM 6, DPM 7, Passport V

Nurse Call Cable

009-003116-00

Nurse Call Cable

Compatible with Accutorr 7, Passport 8, Passport 12



Unterminated Nurse Call Cable, 9'

0012-00-1277-02

Unterminated Nurse Call Cable, 9' (2.7 m)

Compatible with Passport 2, Spectrum, Spectrum OR, V12, V21

Serial Port Cables



Interface Cable

0012-00-1275-01

Cable, Interface, PC, Serial Port to Serial Port, 10'

Compatible with Passport 2, Passport V, Spectrum, Spectrum OR, Accutorr 3



Serial Port Cable – (DIAP)

009-003436-00

Cable, Interface, PC, Serial Port to Serial Port

Compatible with Accutorr 3, Accutorr 7, Passport 8, Passport 12

Power Cords



AC Power Cord, 110V

0012-25-0001

AC Power Cord, 110V

Compatible with Accutorr V, Passport 2, Passport V, Passport 8, Passport 12, Passport 12m, Passport 17m Spectrum, Spectrum OR, V12, V21, Accutorr 3, Accutorr 7



T1 Power Supply

115-020874-00

Power supply with power cord

Compatible with T1

USB Cables



Cable, Mod Bus, Powered USB, 4'

0012-00-1803-15

Cable, mod bus, powered USB, 4'

Compatible with V12, V21



Cable, Mod Bus, Powered USB, 6'

0012-00-1803-12

Cable, mod bus, powered USB, 6'

Compatible with V12, V21



Cable, Mod Bus, Powered USB, 6'

6800-20-50319

Cable, mod bus, powered USB, 6'

Compatible with DPM 6, DPM 7

Bedrail Mounts



Accutorr 7 Bedrail Mount Kit

115-020575-00

Bedrail clamp mounts the Accutorr 7 to the patient's bed
Compatible with Accutorr 7



Bedrail Mount Kit

0040-00-0293

Bedrail Mount Kit mounts monitor to the bedrail of a patient bed
Compatible with Passport 2, Spectrum, Spectrum OR



DPM Bedrail Clamp

8000-30-90170

Bedrail Clamp
Compatible with DPM 3, DPM 4, DPM 5



DPM Bedrail Hook

8000-30-90169

Bedrail Hook mounts the DPM monitors to the patient bed
Compatible with DPM 4, DPM 5



Passport 8 Bedrail Mount

115-012697-00

Bedrail mount mounts the Passport 8 to patient's bed
Compatible with Passport 8



Passport 12 Bedrail Mount

115-012698-00

Bedrail clamp mounts the Passport 12 to patient's bed
Compatible with Passport 12



Passport V Bedrail Mount Kit

6100-30-86358

Bedrail Mount Kit mounts monitor to the bedrail of a patient bed
Compatible with Passport V

Miscellaneous Mounts



Pole Mounting Kit

045-001230-00

Mounting Kit to mount the T1 to a pole

Compatible with T1

T1 Monitor Handle

115-011824-00

Monitor Handle attaches to the T1 Monitor

Compatible with T1

Mounting Accessories



Cable Hooks

0436-00-0206

GCX Cable Hook (mounts under Arm)

Compatible with DPM 6, DPM 7, Passport 12m, Passport 17m



VHM Cable Management Clips

034-000108-00

VHM Cable Management Clips used to organize cables with the VHM wall mount

Compatible with V12, V21



Wall Channel Cover

034-000109-00

Wall Channel Cover spare part

Compatible with V12, V21 wall mounts

Mounting Brackets & Plates

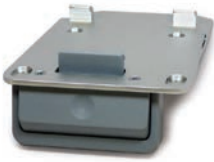


Accutorr Vital Signs, Quick Release Mount, Rolling Stand

045-001054-00

Quick release mounting bracket for use with the Mindray rolling stand

Compatible with Accutorr 3, Accutorr 7



Accutorr Vital Signs, Quick Release Mount, Wall Mount

045-001055-00

Quick release mounting bracket for use with GCX wall mounts

Compatible with Accutorr 3, Accutorr 7



Accutorr V Mounting Bracket

6101-30-46669

Mounting bracket used with GCX wall mount or rolling stand

Compatible with Accutorr V



DPM 5 Transition Plate Kit

115-003477-00

DPM 5 Transition Plate Kit mounts the DPM 5 to a DPM wall mount or DPM rolling stand. The plate will also mount the DPM 5 to the GCX 12" M Series wall mount and GCX VHM.

Compatible with DPM 5



Passport 12m/17m GCX Wall Mount Plate

0386-00-0363

This mounting plate mounts the Passport 12m/17m to the 12" GCX M-Series wall mount and the GCX VHM.

Compatible with DPM 6, DPM 7, Passport 12m, Passport 17m



Passport 12m/17m SMR Bracket

045-000933-00

Satellite module rack wall mount bracket for use with DPM wall mounts and DPM rolling stands

Compatible with DPM 6, DPM 7, Passport 12m, Passport 17m



Passport 12m Standard Mounting Bracket for Wall Mount

0010-20-42686

The standard mounting bracket is a stationary mounting plate that mounts the Passport 12m to GCX wall mounts.

Compatible with Passport 12m



Passport 12m Quick Release Bracket

045-001275-00

Quick release bracket mounts the Passport 12m to GCX wall mounts.

Compatible with Passport 12m



Gas Module 3 Mounting Plate

0436-00-0160

Mounts to the Gas Module 3

Compatible with Gas Module 3



Gas Module 3 Mounting Plate

0386-00-0344

Mounting Plate mounts the Gas Module 3 to a rolling stand, wall mount or anesthesia arm

Compatible with Gas Module 3



Quick Release Mounting Kit

115-003237-00

Quick Release Mounting Kit used to mount the Passport V to the Transport Rolling stand or Wall Mount

Compatible with Passport V

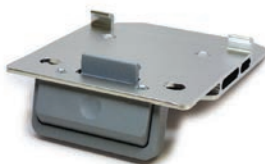


Quick Release Mount for Rolling Stand – Passport 8 and T1

045-000953-00

Quick release mounting bracket mounts the Passport 8 or the T1 to the Mindray Value rolling stand

Compatible with Passport 8, T1 Docking Station

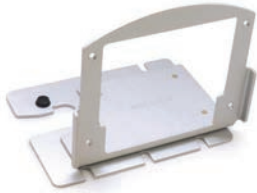


Quick Release Mount for Passport 8 / 12 and T1

045-000954-00

Quick release mounts the Passport 12 to the Transport Rolling stand. This mount also mounts the Passport 8, Passport 12 and T1 to the GCX wall mount.

Compatible with Passport 8, Passport 12, T1 Docking Station



Stationary Mounting Bracket Kit

0040-00-0299-02

Stationary Mounting Bracket Kit mounts monitors to the Transport rolling stand or wall mount

Compatible with Passport 2, Spectrum, Spectrum OR



Trio Mounting Bracket

0040-00-0338

Trio Mounting Bracket Kit used to mount the Trio monitor to the Value Rolling stand or wall mount

Compatible with Trio



V Dock Mounting Plate

115-005387-00

V Dock Mounting Plate mounts the V Dock to the V-Series Rolling Stand or Wall Mount

Compatible with V12, V21



V12 Mounting Bracket

115-003088-00

Mounting bracket for Rolling Stand used to mount the V12 to the V-Series rolling stand

Compatible with V12

Remote Display (RD1) Mounts and Displays



Remote Display Wall Mount

0040-00-0368

GCX flush wall mount used to mount remote flat panel displays

Compatible with Panorama, Passport V, Spectrum, Spectrum OR



Wall Mount, VHM

0436-00-0210

Wall Mount VHM, variable height mount

Compatible with Panorama, Passport V, Spectrum, Spectrum OR

Wall Mounts



Accutorr Vital Signs Wall Mount

045-001059-00

M Series wall mount with quick release bracket

Compatible with Accutorr 3, Accutorr 7



Accutorr Vital Signs 6" Wall Mount

115-025386-00

6" M Series wall mount with basket. Ideal for small rooms where space is limited.

Compatible with Accutorr 3, Accutorr 7



Passport 12m Wall Mount

045-000926-00

GCX M-Series 12" wall mount for Passport 12m includes wall mount and standard mounting bracket (0010-20-42686)

Compatible with DPM 6, Passport 12m



Passport 12m M-Series Wall Mount with Quick Release Bracket

045-001300-00

GCX M-Series wall mount with quick release bracket

Compatible with Passport 12m



Passport 12m VHM Wall Mount with Quick Release

045-001301-00

GCX Variable Height Mount with quick release

Compatible with Passport 12m



Passport 17m Wall Mount

045-000929-00

M-Series 12" wall mount for Passport 17m includes wall mount and standard mounting bracket

Compatible with DPM 7, Passport 17m



Passport 17m VHM Wall Mount with Standard Bracket

045-001302-00

GCX Variable Height Mount with quick release

Compatible with Passport 17m



Passport 8 / Passport 12 / T1 Wall Mount

045-000931-00

M-Series 12" wall mount with quick release bracket

Compatible with Passport 8, Passport 12, T1 Docking Station



Passport 8 / Passport 12 VHM Wall Mount

045-002148-00

Variable Height Wall Mount with quick release bracket

Compatible with Passport 8, Passport 12, T1 Docking Station



Satellite Modular Rack

6800-30-50641

8 slots satellite modular rack

Compatible with DPM 6, DPM 7, Passport 12m, Passport 17m

T1 Docking Station Down Post Kit

045-001228-00

Down post mounting kit that connects to monitor VHM or M-Series wall mount

Compatible with T1

T1 Docking Station

115-028371-00

T1 docking station includes pole mount and power cord

Compatible with T1



V-Series VHM Wall Mount

115-006911-00

V-Series VHM (Variable Height) Wall Mount Assembly

Compatible with V12, V21



VHM Wall Mount

0436-00-0209

Variable height mount, does not include monitor mounting plates

Compatible with DPM 4, DPM 5, DPM 6, Passport 2, Passport V, Spectrum, Spectrum OR



V-Series Module Rack Wall Mount Assembly

115-006912-00

V-Series Module Rack Wall Mount Assembly

Compatible with V12, V21



Wall Mount - 12"

0436-00-0169

GCX M-Series 12" Wall Mount, used to mount Mindray monitors to the wall
Does not include monitor wall mount brackets or plates.

Compatible with Accutorr V, DPM 4, DPM 5 , DPM 6, Passport 2, Passport V, Spectrum,
Spectrum OR, Trio, Passport 8, Passport 12, Passport 12m

Mindray™ North America's line of reusable and single patient use disposable blood pressure cuffs are the ideal choice for your noninvasive blood pressure supplies needs. Our cuffs are cost effective yet retain the most important qualities – comfort and accuracy for your patients. Color coded by size for instant identification, reusable and single patient use cuffs are latex free and conform to the standards set by the AHA.

Neonate Blood Pressure Cuffs



Single Patient Use CM1500A Neonatal Blood Pressure Cuff 001B-30-70692

CM1500A neonate cuff, single-patient use, limb circumference 3.1 to 5.7cm, box of 20

Compatible with DPM 3, DPM 4, DPM 5, DPM 6, DPM 7, Accutorr 3, Accutorr7, Passport 8, Passport 12, Passport 12m, Passport 17m, T1



Single Patient Use CM1500B Neonatal Blood Pressure Cuff 001B-30-70693

CM1500B neonate cuff, single-patient use, limb circumference 4.3 to 8.0cm, box of 20

Compatible with DPM 3, DPM 4, DPM 5, DPM 6, DPM 7, Accutorr 3, Accutorr7, Passport 8, Passport 12, Passport 12m, Passport 17m, T1



Single Patient Use CM1500C Neonatal Blood Pressure Cuff 001B-30-70694

CM1500C neonate cuff, single-patient use cuff, limb circumference 5.8 to 10.9cm, box of 20

Compatible with DPM 3, DPM 4, DPM 5, DPM 6, DPM 7, Accutorr 3, Accutorr7, Passport 8, Passport 12, Passport 12m, Passport 17m, T1



Single Patient Use CM1500D Neonatal Blood Pressure Cuff 001B-30-70695

CM1500D neonate cuff, single-patient use cuff, limb circumference 7.1 to 13.1cm, box of 20

Compatible with DPM 3, DPM 4, DPM 5, DPM 6, DPM 7, Accutorr 3, Accutorr7, Passport 8, Passport 12, Passport 12m, Passport 17m, T1



Single Patient Use Neonatal Size 1 Blood Pressure Cuff 0683-23-0001

Neonatal Size 1, single patient use, limb circumference: 3 to 6cm, box of 10

Compatible with Accutorr V, Passport 2, Passport V, Spectrum, Spectrum OR, V12, V21



Single Patient Use Neonatal Size 2 Blood Pressure Cuff 0683-23-0002

Neonatal Size 2, single patient use, limb circumference: 5 to 8cm, box of 10

Compatible with Accutorr V, Passport 2, Passport V, Spectrum, Spectrum OR, V12, V21



Single Patient Use Neonatal Size 3 Blood Pressure Cuff 0683-23-0003

Neonatal Size 3, single patient use, limb circumference: 7 to 10cm, box of 10

Compatible with Accutorr V, Passport 2, Passport V, Spectrum, Spectrum OR, V12, V21



Single Patient Use Neonatal Size 4 Blood Pressure Cuff 0683-23-0004

Neonatal Size 4, single patient use, limb circumference: 9 to 13cm, box of 10

Compatible with Accutorr V, Passport 2, Passport V, Spectrum, Spectrum OR, V12, V21



Single Patient Use Neonatal Size 5 Blood Pressure Cuff 0683-23-0005

Neonatal Size 5, single patient use, limb circumference: 12 to 17cm, box of 10

Compatible with Accutorr V, Passport 2, Passport V, Spectrum, Spectrum OR, V12, V21

NIBP Hoses



NIBP Hose 6200-30-09688

NIBP tubing, Adult/Pediatric/Infant

Compatible with DPM 6, DPM 7, Accutorr 3, Accutorr 7, Passport 8, Passport 12, Passport 12m, Passport 17m, T1



NIBP Hose 509B-30-06259

NIBP tubing, Adult/Pediatric/Infant

Compatible with DPM 3, DPM 4, DPM 5



NIBP Hose - Neonate 509B-30-06260

NIBP tubing, Neonatal, 3 m

Compatible with DPM 3, DPM 4, DPM 5



NIBP Hose - Neonate 6200-30-11560

NIBP tubing, Neonatal, with connectors (3 m)

Compatible with DPM 6, DPM 7, Accutorr 3, Accutorr 7, Passport 8, Passport 12, Passport 12m, Passport 17m, T1



NIBP Hose, 5' 0683-04-0003

NIBP Hose, 5' (1.5 m), Quick Connect to Quick Connect

Compatible with Accutorr V, Duo, Trio, Passport 2, Passport V, Spectrum, Spectrum OR, V12, V21



NIBP Hose, 10' 0683-04-0004

NIBP Hose, 10' (3.5 m) Quick Connect to Quick Connect

Compatible with Accutorr V, Duo, Trio, Passport 2, Passport V, Spectrum, Spectrum OR, V12, V21

Reusable Blood Pressure Cuffs



Reusable Cuff Starter Kit 115-031807-00

Reusable NIBP Cuff Kit: Includes one Child, Small Adult, Adult, Large Adult, and Thigh cuff

Compatible with Accutorr V, Accutorr 3, Accutorr 7, DPM 3, DPM 4, DPM 5, DPM 6, DPM 7, Duo, Trio, Passport 2, Passport V, Spectrum, Spectrum OR, V12, V21, Passport 8, Passport 12, Passport 12m, Passport 17m, T1



Child Reusable Blood Pressure Cuff 115-027713-00

Reusable NIBP cuff, Child, limb circumference: 10 to 19cm, quick connect

Compatible with Accutorr V, Accutorr 3, Accutorr7, DPM 3, DPM 4, DPM 5, DPM 6, DPM 7, Duo, Trio, Passport 2, Passport V, Spectrum, Spectrum OR, V12, V21, Passport 8, Passport 12, Passport 12m, Passport 17m, T1



Small Adult Reusable Blood Pressure Cuff 115-027714-00

Reusable NIBP cuff, Small Adult, limb circumference: 18 to 26cm, quick connect

Compatible with Accutorr V, Accutorr 3, Accutorr7, DPM 3, DPM 4, DPM 5, DPM 6, DPM 7, Duo, Trio, Passport 2, Passport V, Spectrum, Spectrum OR, V12, V21, Passport 8, Passport 12, Passport 12m, Passport 17m, T1, TD60, TM80



Adult Reusable Blood Pressure Cuff 115-027715-00

Reusable NIBP cuff, Adult, limb circumference: 25 to 35cm, quick connect

Compatible with Accutorr V, Accutorr 3, Accutorr7, DPM 3, DPM 4, DPM 5, DPM 6, DPM 7, Duo, Trio, Passport 2, Passport V, Spectrum, Spectrum OR, V12, V21, Passport 8, Passport 12, Passport 12m, Passport 17m, T1, TD60, TM80



Adult Long Reusable Blood Pressure Cuff 115-027718-00

Reusable NIBP Cuff, Adult Long, limb circumference: 25 to 35cm, quick connect

Compatible with Accutorr V, Accutorr 3, Accutorr 7, DPM 3, DPM 4, DPM 5, DPM 6, DPM 7, Duo, Trio, Passport 2, Passport V, Spectrum, Spectrum OR, V12, V21, Passport 8, Passport 12, Passport 12m, Passport 17m, T1, TD60, TM80



Large Adult Reusable Blood Pressure Cuff

115-027716-00

Reusable NIBP cuff, Large Adult, limb circumference: 33 to 47cm, quick connect

Compatible with Accutorr 3, Accutorr 7, Accutorr V, DPM 3, DPM 4, DPM 5, DPM 6, DPM 7, Duo, Trio, Passport 2, Passport V, Spectrum, Spectrum OR, V12, V21, Passport 8, Passport 12, Passport 12m, Passport 17m, T1, TD60, TM80



Large Adult Long Reusable Blood Pressure Cuff

115-027719-00

Reusable NIBP Cuff, Large Adult Long, limb circumference: 33 to 47cm, quick connect

Compatible with Accutorr 3, Accutorr 7, Accutorr V, DPM 3, DPM 4, DPM 5, DPM 6, DPM 7, Duo, Trio, Passport 2, Passport V, Spectrum, Spectrum OR, V12, V21, Accutorr 3, Accutorr 7, Passport 8, Passport 12, Passport 12m, Passport 17m, T1, TD60, TM80



Thigh Reusable Blood Pressure Cuff

115-027717-00

Reusable NIBP cuff, Thigh, limb circumference: 46 to 66cm, quick connect

Compatible with Accutorr 3, Accutorr 7, Accutorr V, DPM 3, DPM 4, DPM 5, DPM 6, DPM 7, Duo, Trio, Passport 2, Passport V, Spectrum, Spectrum OR, V12, V21, Passport 8, Passport 12, Passport 12m, Passport 17m, T1

*Single Patient Use
Blood Pressure Cuffs*



Child Single Patient Use Blood Pressure Cuff

115-027563-00

Disposable NIBP cuff, Child, limb circumference: 10 to 19cm, quick connect, box of 10

Compatible with Accutorr V, DPM 3, DPM 4, DPM 5, DPM 6, DPM 7, Duo, Trio, Passport 2, Passport V, Spectrum, Spectrum OR, V12, V21, Accutorr 3, Accutorr 7, Passport 8, Passport 12, Passport 12m, Passport 17m, T1



Small Adult Single Patient Use Blood Pressure Cuff

115-027564-00

Disposable NIBP cuff, Small Adult, 18 to 26cm, quick connect, box of 10

Compatible with Accutorr V, DPM 3, DPM 4, DPM 5, DPM 6, DPM 7, Duo, Trio, Passport 2, Passport V, Spectrum, Spectrum OR, V12, V21, Accutorr 3, Accutorr 7, Passport 8, Passport 12, Passport 12m, Passport 17m, T1, TD60, TM80



Adult Single Patient Use Blood Pressure Cuff

115-027565-00

Disposable NIBP cuff, Adult, limb circumference: 25 to 35cm, quick connect, box of 10

Compatible with Accutorr V, DPM 3, DPM 4, DPM 5, DPM 6, DPM 7, Duo, Trio, Passport 2, Passport V, Spectrum, Spectrum OR, V12, V21, Accutorr 3, Accutorr 7, Passport 8, Passport 12, Passport 12m, Passport 17m, T1, TD60, TM80



Adult Long Single Patient Use Blood Pressure Cuff

115-027568-00

Disposable NIBP Cuff, Large Adult Long, limb circumference: 25 to 35cm, quick connect, box of 10

Compatible with Accutorr V, DPM 3, DPM 4, DPM 5, DPM 6, DPM 7, Duo, Trio, Passport 2, Passport V, Spectrum, Spectrum OR, V12, V21, Accutorr 3, Accutorr 7, Passport 8, Passport 12, Passport 12m, Passport 17m, T1, TD60, TM80



Large Adult Single Patient Use Blood Pressure Cuff

115-027566-00

Disposable NIBP cuff, Large Adult, limb circumference: 33 to 47cm, quick connect, box of 10

Compatible with Accutorr V, DPM 3, DPM 4, DPM 5, DPM 6, DPM 7, Duo, Trio, Passport 2, Passport V, Spectrum, Spectrum OR, V12, V21, Accutorr 3, Accutorr 7, Passport 8, Passport 12, Passport 12m, Passport 17m, T1, TD60, TM80



Large Adult Long Single Patient Use Blood Pressure Cuff

115-027569-00

Disposable NIBP Cuff, Adult Long, limb circumference: 33 to 47cm, quick connect, box of 10

Compatible with Accutorr V, DPM 3, DPM 4, DPM 5, DPM 6, DPM 7, Duo, Trio, Passport 2, Passport V, Spectrum, Spectrum OR, V12, V21, Accutorr 3, Accutorr 7, Passport 8, Passport 12, Passport 12m, Passport 17m, T1, TD60, TM80



Thigh Single Patient Use Blood Pressure Cuff

115-027567-00

Disposable NIBP cuff, Thigh, limb circumference: 46 to 66cm, quick connect, box of 5

Compatible with Accutorr V, DPM 3, DPM 4, DPM 5, DPM 6, DPM 7, Duo, Trio, Passport 2, Passport V, Spectrum, Spectrum OR, V12, V21, Accutorr 3, Accutorr 7, Passport 8, Passport 12, Passport 12m, Passport 17m, T1

NMT Cable

040-001462-00

Cable for NMT module

Compatible with Passport 12m, Passport 17m

NMT Sensor Cable

040-001463-00

NMT sensors cable for NMT module

Compatible with Passport 12m, Passport 17m

NMT Stimulation Cable

040-001464-00

Stimulation cable for NMT module

Compatible with Passport 12m, Passport 17m

NMT Sensor Securing Strap, Box of 20

040-002258-00

Sensor securing strap used with NMT module

Compatible with Passport 12m, Passport 17m





Recorder Paper - 12 rolls

0683-00-0505-02

Chart Paper for Recorder, 12 rolls

Compatible with Accutorr V, DPM 3, DPM 4, DPM 5, DPM 6, DPM 7, Passport V, Trio, Accutorr 7, Passport 8, Passport 12, Passport 12m, Passport 17m



Recorder Paper - 10 rolls

0683-00-0422-02

Chart Paper for Recorder, 10 rolls

Compatible with Passport 2, Spectrum, Spectrum OR, V12, V21

DPM SpO₂ – Cables



DPM SpO₂ Cable - 6 Pin

0010-20-42594

DPM SPO₂ Cable connects to DPM SPO₂ reusable and single patient use sensors, 6 pin

Compatible with Accutorr V, DPM 3, DPM 4, DPM 5, Passport V



DPM SpO₂ Cable - 7 Pin

0010-20-42710

DPM SPO₂ Cable connects to DPM SPO₂ reusable and single patient use sensors, 7 Pin

Compatible with DPM 6, DPM 7



DPM SpO₂ Extension Cable

0010-20-43075

DPM SPO₂ extension cable, DB9, 1.2 m

Compatible with DPM 1, DPM 2

DPM SpO₂ – Reusable



DPM SpO₂ 512E Adult Soft Sensor

512E-30-90390

DPM SPO₂ 512E Reusable Sensor, Adult Finger with soft cover

Compatible with Accutorr V, DPM 1, DPM 2, DPM 3, DPM 4, DPM 5, DPM 6, DPM 7, DPM CS, Passport V



DPM SpO₂ 512F Adult Sensor

512F-30-28263

DPM SpO₂ 512F Reusable Sensor, Adult, Finger

Compatible with Accutorr V, DPM 1, DPM 2, DPM 3, DPM 4, DPM 5, DPM 6, DPM 7, DPM CS, Passport V



DPM SpO₂ 512G Pediatric Soft Sensor

512G-30-90607

DPM SPO₂ 512G Reusable Sensor, Pediatric Finger with soft cover

Compatible with Accutorr V, DPM 1, DPM 2, DPM 3, DPM 4, DPM 5, DPM 6, DPM 7, DPM CS, Passport V



DPM SpO₂ 512H Pediatric Sensor

512H-30-79061

DPM SPO₂ 512H Reusable Sensor, Pediatric, Finger

Compatible with Accutorr V, DPM 1, DPM 2, DPM 3, DPM 4, DPM 5, DPM 6, DPM 7, DPM CS, Passport V



DPM SpO₂ 518B Multiple Site Sensor

518B-30-72107

DPM SPO₂ 518B Reusable Sensor, Neonatal, Foot (Adult/Pediatric, finger or toe)

Compatible with Accutorr V, DPM 1, DPM 2, DPM 3, DPM 4, DPM 5, DPM 6, DPM 7, Passport V

DPM SpO₂ – Single Patient Use Sensors



DPM SpO₂ 520P Pediatric Sensors

520P-30-64201

DPM SPO₂ 520P Single patient use sensor, Pediatric, 10 to 50kg, 20/box

Compatible with Accutorr V, DPM 1, DPM 2, DPM 3, DPM 4, DPM 5, DPM 6, DPM 7, DPM CS, Passport V



DPM SpO₂ 520A Adult Sensors

520A-30-64101

DPM SPO₂ 520A Single Patient Use sensor, Adult > 30kg, 20/box

Compatible with Accutorr V, DPM 1, DPM 2, DPM 3, DPM 4, DPM 5, DPM 6, DPM 7, DPM CS, Passport V



DPM SpO₂ 520I Infant Sensors

520I-30-64301

DPM SPO₂ 520I Single patient use sensor, Infant, 3 to 20kg, 20/box

Compatible with Accutorr V, DPM 1, DPM 2, DPM 3, DPM 4, DPM 5, DPM 6, DPM 7, Passport V



DPM SpO₂ 520N Neonatal Sensors

520N-30-64401

DPM SPO₂ 520N Single patient use sensor, Neonatal, <3kg, 20/box

Compatible with Accutorr V, DPM 1, DPM 2, DPM 3, DPM 4, DPM 5, DPM 6, DPM 7, Passport V

Mindray™ North America offers Masimo SET® LNCS®, Low Noise Cabled Sensors, where clinicians benefit from Masimo SET pulse oximetry performance in a sensor with an integral cable. Reusable SpO₂ sensors are available in pediatric and adult sizes. Available in all patient sizes from neonate to adult, LNCS single patient use adhesive sensors are easy to apply, provide durability and improve patient comfort. 100% Latex Free. In addition to LNCS, Masimo SET® LNOP® reusable sensors and single patient use sensors are also available.

Masimo LNCS® SpO₂ Cables



LNC-4 Masimo SpO₂ Cable 0012-00-1652

LNC-4, Masimo LNCS SpO₂ Patient Cable, 4' (1.2 m)

Compatible with Accutorr V, Duo, Trio, Passport 2, Passport V, Spectrum, Spectrum OR, V12, V21



LNC-10 Masimo SpO₂ Cable 0012-00-1599

LNC-10, Masimo LNCS SpO₂ Patient Cable, 10' (3.1 m)

Compatible with Accutorr V, Duo, Trio, Passport 2, Passport V, Spectrum, Spectrum OR, V12, V21



LNC-14 Masimo SpO₂ Cable 0012-00-1653

LNC-14, Masimo LNCS SpO₂ Patient Cable, 14' (4.3 m)

Compatible with Accutorr V, Duo, Trio, Passport 2, Passport V, Spectrum, Spectrum OR, V12, V21



LNCS® Masimo SpO₂ Cable - 6 Pin 115-023136-00

Masimo LNCS SpO₂ patient cable connects to Masimo LNCS sensors, 6 Pin

Compatible with DPM 3, DPM 4, DPM 5



LNCS® Masimo SpO₂ Cable - 7 Pin 115-023135-00

Masimo LNCS SpO₂ patient cable connects to Masimo LNCS sensors, 7 Pin

Compatible with DPM 6, DPM 7



LNCS® Masimo SpO₂ Cable - 8 Pin 115-020768-00

Masimo LNCS SpO₂ patient cable connects to Masimo LNCS sensors, 8 Pin

Compatible with DPM 6, DPM 7, Accutorr 3, Accutorr 7, Passport 8, Passport 12, Passport 12m, Passport 17m, T1

Masimo LNCS® SpO₂ Reusable Sensors



LNCS® DCI Adult Sensor

0600-00-0126

LNCS DCI Adult Reusable Finger Sensor, patient weight range > 30 kg

Compatible with Accutorr V, DPM 3, DPM 4, DPM 5, DPM 6, DPM 7, Duo, Trio, Passport 2, Passport V, Spectrum, Spectrum OR, V12, V21, Accutorr 3, Accutorr 7, Passport 8, Passport 12, Passport 12m, Passport 17m, T1, TD60, TM80



LNCS® DCIP Pediatric Sensor

0600-00-0127

LNCS DCIP Pediatric Reusable Finger Sensor, patient weight range 10 to 50 kg

Compatible with Accutorr V, DPM 3, DPM 4, DPM 5, DPM 6, DPM 7, Duo, Trio, Passport 2, Passport V, Spectrum, Spectrum OR, V12, V21, Accutorr 3, Accutorr 7, Passport 8, Passport 12, Passport 12m, Passport 17m, T1, TD60, TM80



LNCS® TC-I Ear Sensor

0600-00-0128

LNCS TC-I Tip Clip Reusable Ear Sensor, patient weight range > 30 kg

Compatible with Accutorr V, DPM 3, DPM 4, DPM 5, DPM 6, DPM 7, Duo, Trio, Passport 2, Passport V, Spectrum, Spectrum OR, V12, V21, Accutorr 3, Accutorr 7, Passport 8, Passport 12, Passport 12m, Passport 17m, T1

Masimo LNCS® SpO₂ Single Patient Adhesive Sensors



LNCS® Aadx Adult Sensors

0600-00-0121

LNCS Aadx - Adult Single Patient Adhesive Sensors, patient weight range > 30 kg (20/box)

Compatible with Accutorr V, DPM 3, DPM 4, DPM 5, DPM 6, DPM 7, Duo, Trio, Passport 2, Passport V, Spectrum, Spectrum OR, V12, V21, Accutorr 3, Accutorr 7, Passport 8, Passport 12, Passport 12m, Passport 17m, T1, TD60, TM80



LNCS® Inf Infant Sensors

0600-00-0158

LNCS Inf - Infant Single Patient Adhesive Sensors, patient weight range 3 to 20 kg (20/box)

Compatible with Accutorr V, DPM 3, DPM 4, DPM 5, DPM 6, DPM 7, Trio, Passport 2, Passport V, Spectrum, Spectrum OR, V12, V21, Accutorr 3, Accutorr 7, Passport 8, Passport 12, Passport 12m, Passport 17m, T1



LNCS® NEO Neonatal Sensors

0600-00-0157

LNCS NEO Neonatal single patient adhesive sensors - for patients more than 3 kg and less than 40 kgs (20/box)

Compatible with Accutorr V, DPM 3, DPM 4, DPM 5, DPM 6, DPM 7, Passport 2, Passport V, Spectrum, Spectrum OR, V12, V21, Accutorr 3, Accutorr 7, Passport 8, Passport 12, Passport 12m, Passport 17m, T1



LNCS® NeoPt Neonatal Preterm Sensors

0600-00-0156

LNCS NeoPt Neonatal preterm single patient adhesive sensors, patient weight range < 1 kg (20/box)

Compatible with Accutorr V, DPM 3, DPM 4, DPM 5, DPM 6, DPM 7, Passport 2, Passport V, Spectrum, Spectrum OR, V12, V21, Accutorr 3, Accutorr 7, Passport 8, Passport 12, Passport 12m, Passport 17m, T1



LNCS® Pdtx Pediatric Sensors

0600-00-0122

LNCS Pdtx- Pediatric Single Patient Adhesive Sensors, patient weight range 10 to 50 kg (20/box)

Compatible with Accutorr V, DPM 3, DPM 4, DPM 5, DPM 6, DPM 7, Duo, Trio, Passport 2, Passport V, Spectrum, Spectrum OR, V12, V21, Accutorr 3, Accutorr 7, Passport 8, Passport 12, Passport 12m, Passport 17m, T1, TD60, TM80

Nellcor™ SpO₂ Cables



Nellcor™ OxiMax™ SpO₂ Cable

0012-00-1464

Nellcor OxiMax DOC-10 SpO₂ Cable

Compatible with Accutorr V, Duo, Trio, Passport 2, Passport V, Spectrum, Spectrum OR, V12, V21



Nellcor™ OxiMax™ SpO₂ Cable - 6 Pin

0010-20-42595

Nellcor SpO₂ extension cable, 6 Pin

Compatible with DPM 4, DPM 5



Nellcor™ OxiMax™ SpO₂ Cable

0010-20-42712

Nellcor SpO₂ extension cable

Compatible with DPM 6, DPM 7, Accutorr 3, Accutorr 7, Passport 8, Passport 12, Passport 12m, Passport 17m, T1

Nonin SpO₂ Accessories



Cleaning Plug

0003-00-0055

SpO₂ Module Cleaning Plug

Compatible with Panorama Telepack



Nonin SpO₂ Cable

0012-00-1542-01

Reusable Nonin SpO₂ Cable for use with Nonin Single Patient Use Sensors and Nonin Reusable Adult Sensor

Compatible with Panorama Telepack



Nonin SpO₂ Adult Sensor Kit

0020-00-0167

Nonin SpO₂ Sensor Kit, Adult

Includes Nonin SpO₂ Cable, 2 Disposable Sensors, Adult Reusable SpO₂

Compatible with Panorama Telepack



Nonin SpO₂ Single Patient Use Adult Sensors

0600-00-0139-24

Adult Single Patient Use Nonin SpO₂ Sensor (24/pkg). Used with Nonin SpO₂ cable.

Compatible with Panorama Telepack, TD60



Nonin SpO₂ – 8000AA Reusable Adult Sensor

100-000077-00

Adult Reusable Nonin SpO₂ Finger Sensor

Compatible with Panorama Telepack, TD60

Rolling Stands

**Accutorr Vital Signs Mobile Stand**

045-002960-00

Mobile Rolling Stand with quick release mount (045-001054-00) and cable management basket includes hand sanitizer holder and trash clip holder

Compatible with Accutorr 3, Accutorr 7

**Passport 12m Rolling Stand**

045-000915-00

Passport 12m rolling stand with standard mounting bracket (045-000955-00)

Compatible with DPM 6, Passport 12m

**DPM 6 Rolling Stand & SMR Mount**

0010-30-43049

DPM 6 Rolling stand with mounting bracket and SMR mount

Compatible with DPM 6

**Passport 8 and T1 Rolling Stand**

045-000924-00

Mindray Value Rolling Stand with quick release mount (045-000953-00)

Compatible with Passport 8, T1

**Passport 12 Rolling Stand**

045-002147-00

Mindray Transport Rolling Stand with quick release mount (045-000954-00)

Compatible with Passport 12

**V-Series Rolling Stand**

115-005392-00

V-Series Rolling Stand includes mounting brackets

Compatible with V12

Rolling Stand Parts



Accutorr V Mounting Bracket 6101-30-46669

Accutorr V mounting bracket for Value Rolling Stand

Compatible with Accutorr V



Accutorr V Mounting Head 115-002451-00

Mounting head for Accutorr V Rolling Stand.

Compatible with Accutorr V



Accutorr VS Series Quick Release 045-001054-00

Quick release mount for Accutorr Vital Signs Monitor

Compatible with Accutorr 3, Accutorr 7

Basket without Handle – Accutorr VS Mobile Stand 045-002936-00

Second basket to be used with the Accutorr Vital Signs Mobile Stand (045-002960-00) offers additional storage space for supplies

Compatible with Accutorr 3, Accutorr 7



Bin - Value Rolling Stand 115-037732-00

Value Rolling Stand Bin

Compatible with Accutorr V, Duo, Trio, Accutorr 3, Accutorr 7, T1, Passport 8

Cable Management Basket – Accutorr VS Mobile Stand 045-002840-00

Cable management basket with handle to be used with the Accutorr Vital Signs Mobile Stand (045-002960-00)

Compatible with Accutorr 3, Accutorr 7



Caster Kit

121-001346-00

Set of 5 casters for value stand and Accutorr Vital Signs Mobile Stand

Compatible with Accutorr 3, Accutorr 7, Accutorr V, Duo, Trio, T1, Passport 8



Cleaning/Disinfecting Wipes Mount-Accutorr VS Mobile Stand

045-002935-00

Use the cleaning / disinfecting wipes mount to attach disinfecting wipes right to the stand for quick access to cleaning supplies.

Compatible with Accutorr 3, Accutorr 7

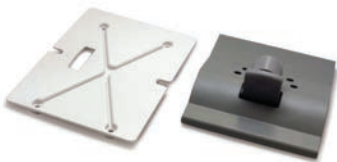


Duo Rolling Stand Mounting Bracket

115-003749-00

Mounting Bracket to mount the Duo to the Value Rolling Stand

Compatible with Duo



Trio Rolling Stand Mounting Bracket

115-003748-00

Trio Mounting Kit for Value Rolling Stand

Compatible with Trio

*Disposable Mindray™
Temperature Probes*



MR411 Esophageal / Rectal Disposable Temp Probe 0011-30-90446

Disposable temperature probe for Adult/Pediatric/Neonatal patients, measurement site: Esophageal/Rectal

Compatible with DPM 4, DPM 5, Passport V, DPM 6, DPM 7, Passport 8, Passport 12, Passport 12m, Passport 17m, T1



MR412 Disposable Skin Temp Probe 0011-30-90447

Disposable temperature probe for Adult/Pediatric/Neonatal patients, measurement site: Skin

Compatible with DPM 4, DPM 5, Passport V, DPM 6, DPM 7, Passport 8, Passport 12, Passport 12m, Passport 17m, T1

*Disposable Temperature
Probes – 400 Series*



ER 400-12 Esophageal/Rectal Disposable Temp Probe 0206-03-0212-02

Esophageal/Rectal, 400 Series Disposable Temperature Probe, 12 Fr. ER 400-12 (20/box)

Compatible with Trio, Passport 2, Passport V, Spectrum, Spectrum OR, V12, V21, DPM 6, DPM 7, Passport 8, Passport 12, Passport 12m, Passport 17m, T1



ER 400-9 Esophageal/Rectal Disposable Temp Probe 0206-03-0209-02

Esophageal/Rectal, 400 Series Disposable Temperature Probe, 9 Fr. ER 400-9 (20/box)

Compatible with Trio, Passport 2, Passport V, Spectrum, Spectrum OR, V12, V21, DPM 6, DPM 7, Passport 8, Passport 12, Passport 12m, Passport 17m, T1



ES 400-12 Esophageal Stethoscope Disposable Temp Probe 0206-03-0112-02

Esophageal Stethoscope, 400 Series Disposable Temperature Probe, 12 Fr. ES 400-12 (20/box)

Compatible with Trio, Passport 2, Passport V, Spectrum, Spectrum OR, V12, V21, DPM 6, DPM 7, Passport 8, Passport 12, Passport 12m, Passport 17m, T1



ES 400-18 Esophageal Stethoscope Disposable Temp Probe 0206-03-0118-02

Esophageal Stethoscope, 400 Series Disposable Temperature Probe, 18 Fr. ES 400-18 (20/box)

Compatible with Trio, Passport 2, Passport V, Spectrum, Spectrum OR, V12, V21, DPM6, DPM7, Passport 8, Passport 12, Passport 12m, Passport 17m, T1



SK 400 Skin Disposable Temp Probe

0206-03-0300-02

Skin, 400 Series Disposable Temperature Probe, SK 400 (20/box)

Compatible with Trio, Passport 2, Passport V, Spectrum, Spectrum OR, V12, V21, DPM 6, DPM 7, Passport 8, Passport 12, Passport 12m, Passport 17m, T1

*Reusable Mindray™
Temperature Probes*



MR Adult Esophageal/Rectal Temp Probe

040-000055-00

5 pin Temp probe, Adult Esophageal/Rectal; Connects direct to monitor

Compatible with Passport V, V12, V21



MR Adult Skin Temp Probe

040-000057-00

5 pin Temp probe, Adult skin; Connects direct to monitor

Compatible with Passport V, V12, V21



MR Pediatric Esophageal / Rectal Temp Probe

040-000056-00

5 pin Temp probe, Pediatric Esophageal/Rectal; Connects direct to monitor

Compatible with Passport V, V12, V21



MR Pediatric Skin Temp Probe

040-000058-00

5 pin Temp probe, Pediatric skin; Connects direct to monitor

Compatible with Passport V, V12, V21



MR401 Esophageal/Rectal Adult Reusable Temp Probe

0011-30-90440

MR401 reusable Temperature probe, Adult, Esophageal/Rectal, Audio; Connects direct to monitor

Compatible with DPM 4, DPM 5



MR401B Esophageal/Rectal Adult Reusable Temp Probe

0011-30-37392

MR401B reusable Temperature probe, Adult, Esophageal/Rectal, 2 Pin; Connects direct to monitor

Compatible with DPM 6, DPM 7, Passport 8, Passport 12, Passport 12m, Passport 17m, T1



MR402 Esophageal/Rectal Pediatric/Neonatal Reusable Temp Probe

0011-30-90441

MR402 reusable Temperature probe, Pediatric/Neonatal, Esophageal/Rectal, Audio; Connects direct to monitor

Compatible with DPM 4, DPM 5



MR402B Esophageal/Rectal Pediatric/Neonatal Reusable Temp Probe

0011-30-37394

MR402B reusable Temp probe, Pediatric/Neonatal, Esophageal/Rectal, 2 Pin; Connects direct to monitor

Compatible with DPM 6, DPM 7, Passport 8, Passport 12, Passport 12m, Passport 17m, T1



MR403 Adult Reusable Skin Temp Probe

0011-30-90442

MR403 reusable Temperature probe, Adult, Skin, Audio; Connects direct to monitor

Compatible with DPM 4, DPM 5



MR403B Adult Reusable Skin Temp Probe

0011-30-37393

MR403B reusable Temperature probe, Adult, Skin, 2 Pin; Connects direct to monitor

Compatible with DPM 6, DPM 7, Passport 8, Passport 12, Passport 12m, Passport 17m, T1



MR404 Pediatric/Neonatal Reusable Skin Probe

0011-30-90443

MR404 reusable Temperature probe, Pediatric/Neonatal, Skin, Audio; Connects direct to monitor

Compatible with DPM 4, DPM 5



MR404B Pediatric/Neonatal Reusable Skin Probe

0011-30-37395

MR404B reusable Temp probe, Pediatric/Neonatal, Skin, 2 Pin; Connects direct to monitor

Compatible with DPM 6, DPM 7, Passport 8, Passport 12, Passport 12m, Passport 17m, T1

Reusable Temperature Cables



400 Series Reusable Temp Cable

0012-00-0975

Reusable Instrument Cable, 400 Series; For use with 400 series disposable probes: Connects temperature probes to patient monitor

Compatible with Trio, Passport 2, Passport 8, Passport 12, Passport 12m, Passport 17m, Spectrum, Spectrum OR



400 Series Temperature Cable

040-000091-00

Reusable Instrument Cable, 400 Series; for use with 400 Series Disposable Temperature Probes, connects temperature probes to patient monitor

Compatible with Passport V, V12, V21



400 Series Temperature Cable

040-001235-00

This cable directly connects 400 Series disposable temperature probes to the monitor.

Compatible with Passport 8, Passport 12, Passport 12m, Passport 17m, T1



Temperature Transition Cable for 400 Series Temp Probes

0010-30-43056

This cable allows the use of the 400 series disposable temperature probes. Connect the transition cable to the module then connect the transition cable to the reusable temp cable, 0012-00-0975.

Compatible with DPM 6, DPM 7, Passport 8, Passport 12, Passport 12m, Passport 17m, T1



MR Temperature Cable

0011-30-37391

Temperature extension cable for use with Mindray™ disposable temperature probes

Compatible with DPM 6, DPM 7, Passport 8, Passport 12, Passport 12m, Passport 17m, T1



MR Temperature Cable

0011-30-90444

Temperature extension cable for use with Mindray™ disposable temperature probes

Compatible with DPM 4, DPM 5

SmarTemp



SmarTemp Oral Probe

801-6006-00009-00

Oral/Auxiliary probe for use with SmarTemp temperature module

Compatible with Accutorr V, DPM 3, Accutorr 3, Accutorr 7



SmarTemp Oral Probe Blue Sheath

M09A-20-62062

Blue sheath for use with the SmarTemp Oral/Auxiliary probe

Compatible with Accutorr V, DPM 3, Accutorr 3, Accutorr 7



SmarTemp Probe Covers - 2000/case

M09A-30-62128

Probe covers for use with SmarTemp temperature Probes: 2000 pcs/case (100 boxes, 20 pcs/box)

Compatible with Accutorr V, DPM 3, Accutorr 3, Accutorr 7



SmarTemp Probe Covers - Box of 20

M09A-20-62124

Probe covers for use with SmarTemp temperature probes, box of 20

Compatible with Accutorr V, DPM 3, Accutorr 3, Accutorr 7



SmarTemp Rectal Probe

801-6006-00010-00

Rectal probe for use with SmarTemp temperature module

Compatible with Accutorr V, DPM 3, Accutorr 3, Accutorr 7



SmarTemp Rectal Probe Sheath

M09A-20-62062-51

Sheath for use with the SmarTemp Rectal probe

Compatible with Accutorr V, DPM 3, Accutorr 3, Accutorr 7

Welch Allyn® SureTemp® Plus Thermometer Module and Accessories



Welch Allyn® Sure Temp® Plus Probe Covers

040-002471-00

Probe covers for the Welch Allyn® SureTemp Plus thermometer module, 7500/case

Compatible with Accutorr V, Duo, Accutorr 3, Accutorr 7



Accutorr 3 Welch Allyn® SureTemp® Plus Bracket

115-025042-00

Mounting bracket used to mount and lock the Welch Allyn® SureTemp Plus thermometer module to the side of the Accutorr 3

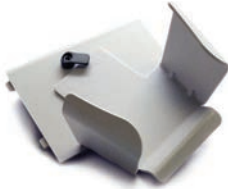
Compatible with Accutorr 3



Accutorr 7 Welch Allyn® SureTemp® Plus Bracket 115-025041-00

Mounting bracket used to mount and lock the Welch Allyn® SureTemp Plus thermometer module to the side of the Accutorr 7

Compatible with Accutorr 7



Welch Allyn® SureTemp® Plus Locking Bracket 6101-30-46633

Mounting bracket used to mount and lock the Welch Allyn® SureTemp Plus thermometer module to the side of the Accutorr V

Compatible with Accutorr V



Welch Allyn® SureTemp® Plus Non Locking Mount 0040-00-0405

SureTemp Plus non-locking mounting bracket mounts the Welch Allyn® SureTemp Plus thermometer module to the patient monitor

Compatible with Duo



Welch Allyn® SureTemp® Plus Oral Probe 0992-00-0213-02

Welch Allyn® SureTemp Plus oral probe cable and well, 9 foot

Compatible with Accutorr V, Duo, Accutorr 3, Accutorr 7



Welch Allyn® SureTemp® Plus Thermometer Module 0992-00-0198

Welch Allyn® SureTemp Plus Thermometer Module includes one 9' oral probe with oral probe well and a box of 25 probe covers

Compatible with Accutorr V, Duo, Accutorr 3, Accutorr 7

**Mindray provides
multi-modality solutions:**

- Medical imaging systems
- Patient monitoring, networking
and life support products
- *In-vitro* diagnostic products



Mindray North America
800 MacArthur Blvd.
Mahwah, NJ USA 07430
Tel: 800.288.2121 or 201.995.8000
Fax: 800.926.4275
www.mindray.com

Mindray® is a registered trademark of Shenzhen Mindray Bio-Medical Electronics Co., Ltd. All rights reserved.
All brands and product names are trademarks of their respective owners. Specifications subject to change without notice.
Contact your Mindray Representative for the most current information.
©2019 Mindray DS USA, Inc. Subject to change. 04/19 P/N: 0002-08-5639 Rev E

mindray
NORTH AMERICA