



LOCKE & ENGLAND

AUCTIONEERS & VALUERS

MARCH SALE OF

SELECTED ANTIQUE FURNITURE & COLLECTORS' ITEMS, JEWELLERY & WATCHES

VIEWING

Saturday 23rd March
10.00 am - 2.00 pm

Tuesday 26th March
9.00 am - 5.00 pm

Wednesday 27th March
9.00 am - 7.00 pm

Morning of the sale
from 9.00 am

AUCTION

**Antique Furniture & Collectors' Items,
Jewellery & Watches**

Thursday 28th March 2019
Commencing at 11.00 am

Leamington Spa Auction Centre

CATALOGUES

£5 by post,
online at www.leauction.co.uk

LIVE INTERNET BIDDING

Live internet bidding available via

the saleroom

The home of art & antiques auctions



LOCKE & ENGLAND

AUCTIONEERS & VALUERS

Weekly Thursday Sales

TO INCLUDE (SUBJECT TO DELIVERY)

Antique & Modern Furniture • Clocks • Books
Ceramics & Glassware • Pictures & Prints • Bicycles
Jewellery & Watches • Garage Tools & Equipment
Household Electrical Items • Building Reclaims
Office Furniture & Equipment • Retail Products & Stock
Horticultural & Commercial Equipment • Vehicles
Garden Furniture & Effects • Collectables

Entries Invited

**Friday & Monday 8.30am - 5.30pm
and Tuesday by appointment**

Leamington Spa Auction Centre 12 Guy Street, Leamington Spa, CV32 4RT
01926 889 100 or info@leauction.co.uk

www.leauction.co.uk

FURNITURE
& CLOCKS



FURNITURE & CLOCKS

1

A mid 18th century oak dresser base with later spice drawers to top over three drawers and two field panel cupboard doors flanking a central panel on style feet, h. 101 cm, w. 187 cm, d. 55 cm £400 - £600



Lot 1

2

An early 18th century and later oak chest of drawers, the top over four long drawers on style feet, h. 101 cm, w. 103 cm, d. 57 cm £80 - £120



Lot 3

3

A mid 18th century oak and mahogany cross banded mule chest, the two panel top over a four field paneled front and two drawers on ogee bracket feet, h. 83 cm, w. 147 cm, d. 54 cm £150 - £250



Lot 5



Lot 4

4

An 18th century style oak chest on stand, the cavetto cornice over a cushion fronted drawer, two short drawers and three long drawers on the stand with three drawers and two secret drawers on cabriole legs, h. 183 cm, w. 123 cm, d. 58 cm

£200 - £300

5

An early 18th century and later oak coffer, the five panel top lifting to reveal a vacant interior over a five panel front with carved top on style feet, h. 65 cm, w. 151 cm, d. 51 cm

£200 - £300

6

A near pair of 19th century Windsor arm chairs, the comb backs over elm seats on turned legs and stretchers

£200 - £300

7

An early 19th century ash, elm and beech Windsor arm chair, the comb back with wheel splat above the shaped seat on turned legs and stretchers, h. 97 cm, w. 57 cm, d. 59 cm

£200 - £250

8

An early 18th century oak bible box, the later carved top opening to reveal a vacant interior over later carved lunette front and sides, h. 19 cm, w. 49 cm, d. 30 cm

£80 - £120

9

A harlequin set of six 19th century single chairs, comprising of two comb backs and four wheel backs, all with elm seats on turned legs and stretchers, h. 87 cm, w. 42 cm, d. 50 cm

£200 - £300



Lot 6



Lot 7



Lot 2

10

Of local interest: A mid 19th century oak bookcase made by Kendal Bros. of Warwick for John Margetts of 32 High St. Warwick. The oak was grown on the estate of Sir Charles Mordaunt of Walton Hall, Wellesbourne, and the bookcase made to fit a recess in John Margetts breakfast room. The carved wreath was carved by Thomas Kendall (1837-1919) for his friend. The bookcase was then auctioned in 1905 and was purchased by the grand daughter. The bookcase is illustrated in the book 'The Woodcarvers Of Warwick' by Ann Stevens and comes with associated paperwork, h. 214 cm, l. 175 cm, d. 65 cm *£600 - £800*



Lot 10

11

A 19th century ash and elm Windsor arm chair, the comb back with pierced splat having a fleur-de-lis design over the solid seat on turned legs and stretchers, h. 89 cm, 52 cm, d. 54 cm *£150 - £250*



Lot 11

12

An 18th century and later oak drop leaf dining table, the top with the initials M.T.H. inlaid in bog oak over barley twist legs and stretchers, h. 73 cm, l. 159 cm, w. 120 cm *£80 - £120*

£80 - £120

13

A 19th century Continental walnut cupboard, the single book matched veneered door enclosing fixed shelving and a single drawer on a plinth base with concealed drawer, h. 159 cm, w. 94 cm, d. 47 cm *£100 - £150*

£100 - £150



15

An 18th century oak side table, the top over a single drawer on square section tapering legs, h. 71 cm, w. 83 cm, d. 46 cm *£100 - £150*

16

A late 18th century mahogany correction chair, the veneered top rail over moulded back rails and a reeded seat, h. 98 cm, w. 32 cm, d. 36 cm *£50 - £80*

17

A George III and later mahogany bureau bookcase, the cornice over two astragal glazed doors above the fall front with fitted interior and three graduated drawers on bracket feet, h. 176 cm, w. 82 cm, d. 47 cm *£200 - £300*

14

A late 19th century walnut open armchair, the baluster turned top rail over a florally carved back with the initials R.H.S. to the uprights above the reeded arms and seat rail on turned front legs, carved date of 1887 to back, h. 108 cm, w. 60 cm, d. 58 cm

£150 - £200



Lot 15

Lot 17

18

A late 18th century mahogany and strung dressing table, the fold out top with oval panels opening to reveal a fitted interior including a mirror, beaker wells and hinged compartments over moulded square section legs and shaped stretchers, h. 84 cm, w. 55 cm, d. 51 cm *£200 - £300*



Lot 19

19

A Victorian rosewood embroidery stand on a bobbin turned base with turned feet (one missing), h. 99 cm, w. 104 cm, d. 66 cm *£80 - £120*



Lot 20

20

An early 19th century mahogany bow front chest of drawers, the crossbanded and strung top over two short drawers and three long drawers on splay feet, h. 108 cm, w. 114 cm, d. 60 cm *£150 - £250*



Lot 21

21

A Victorian rosewood table, the top over a single drawer on tapering cylinder end supports and carved C-scroll feet, h. 73 cm, w. 117 cm, d. 59 cm *£200 - £300*

22

A Victorian and later mahogany Aspidistra stand, the top on a barley twist column, turned platform base and hairy paw feet, h. 78 cm, dia. 49 cm *£80 - £120*

23

A late 19th century French kingwood, rosewood banded and walnut occasional table, the parquetry top with three drop leaves on brass mounted cabriole legs with a brass edged under tier, h. 73 cm, dia. 65 cm *£150 - £250*



Lot 23

24

An early 19th century mahogany display cabinet, the cornice over three glazed doors enclosing adjustable shelving, h. 51 cm, w. 127 cm, d. 15 cm *£70 - £100*

£70 - £100

25

A Georgian mahogany two seat settee upholstered in a blue cut fabric, the scroll over back on square section moulded tapering legs joined by later stretchers, h. 95 cm, w. 97 cm, d. 77 cm
 £50 - £80

26

An early 19th century mahogany and rosewood banded work table, the drop leaf top over two single drawers on turned legs and brass cup castors, h. 70 cm, w. 66 cm, d. 50 cm
 £70 - £100

27

An early 20th century walnut stool in the Queen Anne style, upholstered in a brown cut fabric having cabriole legs with shell carved knees and pad feet, h. 50 cm, w. 57 cm, d. 40 cm
 £30 - £50

28

A Victorian mahogany arm chair upholstered in a blue button back fabric, the carved top rail above scroll over arms, serpentine seat and turned front legs, h. 118 cm, w. 75 cm, d. 81 cm
 £150 - £250



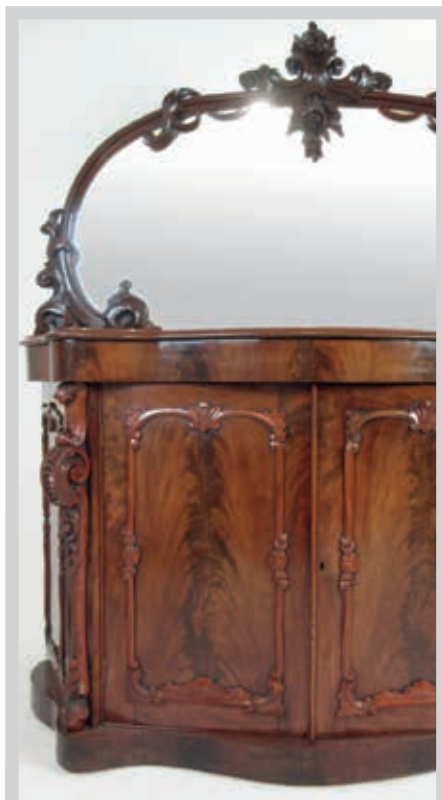
Lot 28

29

A 19th century mahogany dressing table, the galleried top over two short drawers on lyre end supports with a flame mahogany platform base and turned feet, h. 76 cm, w. 89 cm, d. 48 cm
 £70 - £100

30

A Victorian mahogany three tier what-not, the galleried top (with back piece missing) over turned side supports, central single drawer and turned feet, h. 114 cm, w. 61 cm, d. 40 cm
 £50 - £80

**31**

A Victorian mahogany mirror back chiffonier, the carved and pierced mirror frame over the serpentine top and two cupboard doors enclosing fixed shelving on plinth base, h. 172 cm, w. 148 cm, d. 51 cm
 £200 - £300



Lot 32

32

A mid 18th century mahogany chest of two short over four long drawers on bracket feet, h. 114 cm, w. 101 cm, d. 53 cm £300 - £500

33

An early 19th century mahogany and boxwood strung bow front side table, the top over a single drawer on tapering legs, h. 76 cm, w. 92 cm, d. 51 cm £80 - £120



Lot 34

34

A late 19th century walnut butler's tray on stand, the tray with folding sides on the collapsible stand, h. 88 cm, w. 94 cm, d. 71 cm £50 - £80

35

An early 20th century large scale model yacht, the timber hull with working rudder on later stand with sails and rigging over, stamped 'Nottingham, England', h. 243 cm, l. 203 cm £150 - £250

36

A George III mahogany pot cupboard, the pierced galleried top over a single door on square section chamfered legs, h. 76 cm, w. 41 cm, d. 32 cm £30 - £50

37

A mid 18th century mahogany bow front wall hanging corner cupboard, the two doors opening to reveal fixed shelving, h. 101 cm, w. 68 cm £50 - £80



38

An early 20th century mahogany cheval mirror, the brass urn finials over the beveled glass on swept legs with brass cup castors, h. 162 cm, w. 67 cm, d. 63 cm £80 - £120



Lot 39

39
An Edwardian mahogany waterfall bookcase, the reeded fixed shelves over two cupboard doors with oval flame mahogany panels, h. 164 cm, w. 97 cm, d. 26 cm *£70 - £100*

40
A George III mahogany bureau, the crossbanded fall front revealing a fitted interior over three graduated drawers on splay feet, h. 105 cm, w. 97 cm, d. 51 cm *£80 - £120*

41
An early 20th century mahogany lazy Susan, the revolving pie crust top on a turned column with three legs on ball and claw feet, h. 21 cm, dia. 43 cm *£50 - £80*

42
A mid 18th century mahogany tilt top tripod table, the one piece top over a turned column and three splay legs, h. 75 cm, dia. 80 cm *£80 - £120*



Lot 43

43
A Georgian style mahogany occasional table, the drop leaf top over single drawer and a turned column on three splay legs, h. 59 cm, w. 55 cm, d. 39 cm *£40 - £60*

44
A late 18th century mahogany toilet mirror, the oval glass over the serpentine base with three drawers on bracket feet, h. 54 cm, w. 43 cm, d. 23 cm *£80 - £120*

45
A mid to late 18th century mahogany chest of two short over three long drawers flanked by reeded quarter columns on bracket feet, h. 99 cm, w. 126 cm, d. 55 cm *£200 - £300*

46
A Victorian mahogany nursing chair upholstered in a button back green cut fabric, the carved and moulded show frame over a serpentine seat on turned front legs, h. 104 cm, w. 68 cm, d. 77 cm *£80 - £120*

47
Two sets of 19th century wall hanging shelves, one with pierced sides, h. 68 cm, w. 62 cm, d. 17 cm *£40 - £60*

48
An 18th century and later mahogany pole screen, the adjustable mirrored panel on a turned column and platform base with three splay legs, h. 181 cm *£40 - £60*



Lot 45



Lot 49

49

A pair of Victorian rosewood window seats upholstered in floral needlework, the carved and padded arms over carved cabriole legs, h. 73 cm, w. 79 cm, d. 32 cm *£100 - £150*

50

A late 18th century mahogany crossbanded and strung toilet mirror, the oval glass on uprights with ivory roundels over the serpentine base with three drawers on ogee bracket feet, h. 67 cm, w. 50 cm, d. 23 cm *£80 - £120*



Lot 51

51

A Regency mahogany, crossbanded and boxwood strung serpentine fronted chest of four graduated drawers with herringbone veneered corners on splay feet, h. 92 cm, w. 93 cm, d. 50 cm *£1600 - £2000*

52

A mid 18th century mahogany and parcel gilt fretwork framed beveled glass mirror, h. 96 cm, w. 51 cm *£80 - £120*



Lot 52

53

An Edwardian burr walnut breakfast table, the quarter veneered tilt top over four fluted columns and four carved C-scroll legs, h. 73 cm, w. 123 cm, d. 90 cm *£150 - £250*



Lot 53

54

A 18th century mahogany framed swing mirror on later mahogany stand, h. 73 cm, w. 44 cm *£40 - £60*

55

A Victorian rosewood card table, the swivel action top with later circular baize insert over turned column, platform base and four paw feet, h. 70 cm, w. 91 cm, d. 45 cm *£100 - £200*



56

A late Victorian burr walnut and parquetry centre table, the serpentine top with geometrical ebony and tulipwood inlay over turned end supports and stretcher with carved scroll feet, h. 72 cm, w. 91 cm, d. 60 cm *£200 - £300*

57

A Regency mahogany two pillar dining table with one later leaf, the moulded top on turned columns and moulded splay legs with brass paw castors, h. 71 cm, l. 188 cm, w. 120 cm *£300 - £400*

58

A Regency giltwood pier mirror, the plate flanked by Egyptian figures, h. 66 cm, w. 51 cm *£80 - £120*

59

An Edwardian walnut twin pedestal desk, the top with tooled green leather insert over a row of three drawers on two banks of three drawers, one filing, on plinth base, h. 77 cm, w. 137 cm, d. 98 cm *£250 - £350*



Lot 60

60

A 18th century oak side table, the top over a single drawer and shaped apron on moulded square section legs, h. 70 cm, w. 80 cm, d. 43 cm *£80 - £120*



Lot 59

61

A mid 18th century oak wall hanging corner cupboard, the single panel door enclosing fixed shelving, h. 104 cm, w. 78 cm *£50 - £80*



Lot 62

62

An elm topped and oak legged cricket table, h. 66 cm, dia. 54 cm *£150 - £200*

63

An early 20th century coopered and brass bound oval barrel with handpainted armorial crest, h. 53 cm, w. 32 cm *£80 - £120*

64

An 18th century oak wall hanging corner cupboard, the single arch topped door enclosing fixed shelving, h. 85 cm, w. 46 cm *£40 - £60*

65

A late 19th century oak framed dinner gong, the arched top supporting a later gong on turned supports along with a cork headed mallet, h. 92 cm, w. 53 cm *£70 - £100*



Lot 63

66

A Regency giltwood convex mirror, the plate in a reeded ebonised slip and repeating sphere's to frame, dia. 57 cm *£100 - £150*

67

A mid 18th century mahogany Chippendale style open arm chair, the serpentine carved cresting rail over a pierced and carved splat and carved out swept arms on moulded and chamfered legs, h. 96 cm, w. 68 cm, d. 62 cm *£80 - £120*



Lot 68

68

A mid Georgian mahogany waterfall bookcase converted to wall hanging shelves, the shelves with reeded edges over a single drawer and brass carry handles to sides, h. 126 cm, w. 62 cm, d. 30 cm *£80 - £120*



69

An early 20th century mahogany framed wall mirror, h. 141 cm, w. 46 cm £40 - £60



Lot 70

70

A handwoven Caucasian rug, the multi line border enclosing a red ground field with a cream central medallion, 198 cm x 129 cm £80 - £120

71

A handwoven Persian prayer rug, the four line border enclosing a cream ground field with star and ibrik design, 163 cm x 98 cm £70 - £100

72

A handwoven Afghan runner, the multi line border surrounding a red ground field with two rows of octagons, 283 cm x 108 cm £80 - £120

73

A handwoven Persian rug, the triple line border enclosing a red ground field with a central stepped diamond medallion, 153 cm x 108 cm £40 - £60



Lot 72



Lot 73

74

A handwoven Afghan rug, red ground with central octagons, 99 cm x 66 cm £20 - £30

75

A handwoven Persian prayer rug, the multi line border enclosing a central field with four mihrab's, 133 cm x 79 cm £70 - £100

76

A handwoven Afghan rug, the multi line border enclosing a red ground field with three columns of octagons, 183 cm x 125 cm *£80 - £120*



Lot 77

77

A handwoven Caucasian rug, the multi line border enclosing a blue ground field with three central medallions surrounded by animal motif's, 162 cm x 116 cm *£80 - £120*



Lot 78

78

A handmade Caucasian rug, the triple line border enclosing a blue and orange field with geometrical designs, 206 cm x 127 cm *£80 - £120*

79

A handwoven Afghan rug, the multi line border enclosing a red ground field with rows of octagons, 354 cm x 230 *£120 - £180*



Lot 80

80

An early 20th century walnut twin pedestal desk, the top with tooled burgandy leather insert over a single drawer and two banks of three drawers on a plinth base, h. 76 cm, w. 127 cm, d. 60 cm *£150 - £250*



Lot 81

81

A 19th century Continental walnut chest of drawers, the quarter veneered serpentine top over three long drawers, h. 84 cm, w. 95 cm, d. 50 cm
£100 - £150

82

A Regency style mahogany and brass mounted side table, the one piece top on four turned and reeded legs with brass paw feet, h. 72 cm, l. 183 cm, d. 53 cm
£150 - £250

83

Seven mahogany single chairs, comprising of a pair of mid 18th century chairs, a set four late 18th century Hepplewhite style chairs and one late 18th century Hepplewhite style chair
£170 - £200

84

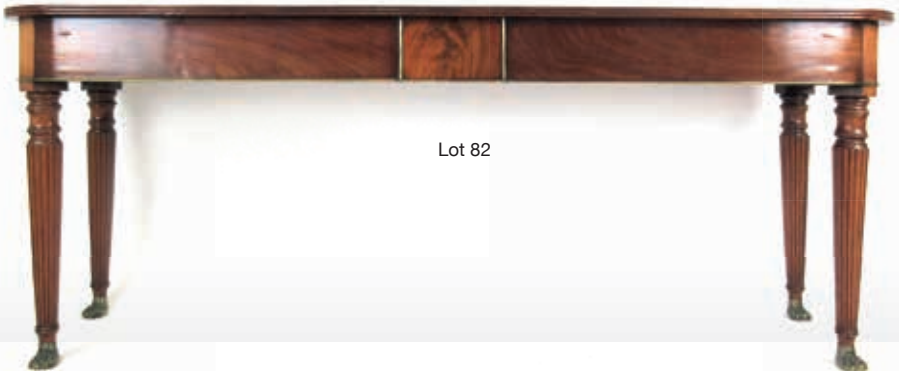
An early 18th century walnut mirror, the moulded frame surrounding a beveled glass, h. 61 cm, w. 41 cm
£40 - £60



Lot 85

85

A George III mahogany chest on chest, the cavetto cornice over three short drawers and three long drawers flanked by fluted corners above the base with three long graduated drawers on bracket feet, h. 184 cm, w. 111 cm, d. 56 cm
£500 - £800



Lot 82



Lot 86

86

An early 20th century burr walnut twin pedestal desk, the reverse breakfront top with a tooled tan leather top above a row of three drawers and two banks of two drawers on cabriole legs with shell carved knees, h. 76 cm, w. 153 cm, d. 92 cm

£400 - £600

88

A 19th century copper log bin, the riveted body with oak rim on a later ash stand, h. 70 cm, dia. 80 cm

£100 - £150

89

A pair of Louis XVI style gilt brass five branch wall lights, the main body styled as a quiver with arrow feathers protruding over the foliate branches and acanthus detail with fir cone finial all hanging from a bowed ribbon, along with ten shades. Purportedly from Stoneleigh Abbey, h. 96 cm, w. 54 cm

£400 - £600



Lot 87

87

A Victorian mahogany wind-out extending dining table, the moulded top with three extra leaves on four carved cabriole legs with ceramic castors, h. 75 cm, max l. 266 cm, w. 123 cm

£400 - £600

90

A late 19th century and later cast iron mangle made by the 'Iron Works Society Ltd.' of Keighley, later painted, h. 151 cm, w. 97 cm

£80 - £120

91

A large red painted cast iron apple press along with accessories including a large spoon, blocks etc. h. 155 cm

£70 - £100



Lot 88



Lot 89

92

An early 20th century General Electric wall hanging hand crank telephone, the oak case with two bells over the mouth piece and later shelf with ear piece to side, h. 68 cm, w. 30 cm, d. 32 cm

£100 - £200



Lot 91

93

Taxidermy:- An early 20th century oak mounted study of a pike, h. 33 cm, l. 96 cm
£50 - £80

94

A handwoven Persian style kilim, the multi line border surrounding a geometrical field, 198 cm x 123 cm
£50 - £80

95

A handwoven rug, the cream ground field with a diamond design within wave border, 195 cm x 155 cm
£40 - £60

96

A handmade flatwoven kilim, the multi line border enclosing a diamond design field, 338 cm x 245 cm

£80 - £120



Lot 97

97

A late 19th century French Boulle and gilt brass mounted bracket clock, the case with a seated cherub over the chased brass face with ceramic Roman numerals and pierced hands having a movement by Samuel Marti & Cie over a gilt brass cherub holding flowers, the clock standing on a matching Boulle and brass mounted bracket, h. 89 cm, w. 38 cm
£300 - £500

98 - 150

Spare Lots



LOCKE & ENGLAND
AUCTIONEERS & VALUERS

TO BE SOLD BY AUCTION

Thursday 27th June 2019
Mid Century Design

Commencing at 11.00am



This is a specialist sale of mid century classic designed furniture and collectables. These auctions have proved to be very popular with specialist buyers and private individuals looking for something out of the ordinary to furnish their homes. Our contemporary sales are jam-packed with Scandinavian, American and British designs by the 'outside of the box' thinkers of the 1950s through to today.

**Viewing: Wednesday 26th June – 9am to 7pm,
Morning of sale from 9am**

AUCTION ENTRIES INVITED

Leamington Spa Auction Centre 12 Guy Street, Leamington Spa, CV32 4RT
01926 889 100 or valuers@leauction.co.uk

www.leauction.co.uk

PICTURES
AND PRINTS



PICTURES AND PRINTS

151

Late 18th/early 19th Century School,
a half-length portrait of a gentleman wearing a black dress coat and white cravat, unsigned, oil on canvas, 73 x 63 cm *£300 - £500*

152

19th Century School,
a half-length portrait of a gentleman in a black coat with white collar, unsigned, oil on canvas laid onto webbing, 73 x 59 cm *£100 - £200*

153

M.K. Barnett (early 20th Century),
'H.M.S. Lion...', signed and dated 1914, 23 x 35 cm, together with another of 'HM Destroyer Swift' (2) *£200 - £300*

154

John Woodward Lines R.B.S.A. R.S.M.A. (b. 1938),
a village street, a church in the background, signed, oil on board, 61 x 76 cm, together with another similar oil by the same hand and a similar unsigned oil (3) *£100 - £150*

155

John Woodward Lines R.B.S.A. R.S.M.A. (b. 1938),
'To the Promised Land!', signed, oil on board, 28 x 22 cm, together with 'Dyed Roofs' by the same hand (2) *£100 - £150*



Lot 152



Lot 153 (part)



Lot 151 (above) and 154 (below)

156

John Woodward Lines
R.B.S.A. R.S.M.A.
(b. 1938),
yachts at harbour,
signed,
watercolour,
28 x 39 cm £50 - £80

157

John Woodward Lines
R.B.S.A. R.S.M.A.
(b. 1938),
a woodland lane,
signed,
watercolour,
37 x 47 cm, together
with another similar
watercolour by the
same hand (2)
£100 - £150

158

John Woodward Lines
R.B.S.A. R.S.M.A.
(b. 1938),
a lane through trees
into fields,
signed,
watercolour,
27 x 35 cm together
with two other
watercolours by the
same hand (3) £40 - £60





Lot 159

159

James Humbert Craig (Irish, 1878-1944),
a white-washed cottage beside a woodlands
and river,
signed,
oil on board,
29 x 42 cm, pencil drawing verso

£1500 - £2000

160

Horace Mann Livens (1862-1936),
'Banstead Village',
signed with initials,
watercolour,
9 x 13 cm, together with 'The Fox Inn,
Kingswood' by the same hand (2) £250 - £350

161

James Stark (1794-1859),
a family reclining near a lake, cattle in the
background,
signed Jas. Stark,
oil on canvas,
35 x 45 cm

£150 - £200



Lot 162

162

Thomas Kinkadee,
'Evening Majesty',
signed and numbered 104/970 IP, limited edition
offset lithograph,
45 x 67 cm, with c.o.a. £80 - £120



Lot 164

163

Dennis Lewan,
 'Secret Cottage',
 signed and numbered 383/395, limited
 edition serio-lithograph,
 45 x 56 cm, with c.o.a. together with
 'Apline Falls', 387/395 (2) *£100 - £200*

164

Brian Tovey (20th/21st Century),
 'Low Tide',
 signed and dated 78,
 oil on canvas,
 50 x 60 cm *£100 - £200*



165

William John Wainwright R.W.S. (1855-1931),
 a portrait of a writer,
 signed with monogram,
 watercolour,
 55 x 38 cm *£200 - £300*



Lot 166

166

William John Wainwright R.W.S. (1855-1931),
a portrait of a seated lady
signed with monogram and dated 1919,
watercolour,
55 x 38 cm £150 - £200

167

Joseph Finnemore (1860-1939),
'Eventide',
signed and dated '90,
watercolour,
67 x 49 cm, Royal Institute of Painters in
Watercolours label verso £100 - £200

168

Jacqueline Williams N.E.A.C. (contemporary),
'The Apple Orchard',
initialled,
oil on board,
75 x 90 cm, gallery label verso £150 - £200

169

After Conrad Kiesel (1846-1921),
a woman holding a jug of flowers, crystoleum,
38 x 27 cm, together with another matching (2)
£50 - £80



Lot 167

170

C. Stanfield (19th Century),
a Continental street scene,
signed and dated 1846,
watercolour,
32 x 22 cm £50 - £80

171

David Cox Junior A.R.W.S. (1809-1885),
'The Gatehouse, Ludlow Castle',
signed in pencil,
watercolour,
24 x 35 cm £40 - £60

172

Roz Jennings, a group of thirty fashion
illustrations, pen and ink, 29 x 21 cm each
*Jennings was an illustrator for Laura Ashley in
the 1970's (30) £50 - £80

173

Roz Jennings, a group of thirty fashion
illustrations, pen and ink, 29 x 21 cm each
*Jennings was an illustrator for Laura Ashley in
the 1970's (30) £50 - £80

174

Roz Jennings, a group of thirty fashion illustrations, pen and ink, 29 x 21 cm each
*Jennings was an illustrator for Laura Ashley in the 1970's (30) £50 - £80

175

N. Schiavonetti after H. Singleton, 'The Last Effort and Fall of Tippoo Sultaun', engraving, 58 x 69 cm, together with 'The Surrender of Two Sons of Tippoo Sultaun' *Each bearing metalwares presentation plaques 'Presented to The Officers 2nd Royal Dublin Fusiliers by Captain G.S. Higginson 1909

£100 - £200



176

James Cumming R.S.A., R.S.W. (Scottish 1922-1996), 'The Signs of the Times', signed, oil on canvas, 38 x 49 cm

£300 - £500



Lot 168



177

After Sir William Nicholson (1872-1949), a group of ten lithographic prints: From 'The Square Book of Animals', pub. 1900: The Simple Sheet, The Toilsome Goat; From 'An Alphabet', pub. 1898: O for Ostler, X for Xylographer, Z for Zoologist; From 'An Almanac of Twelve Sports', pub. 1898: May (Lady Fishing), July (Lady Archer); From 'London Types', pub. 1898: Coster (Hammersmith), Hawker (Kensington), Sandwich-Man (Trafalgar Square); together with nine Nicholson book covers and a group of loose verses and other pages (Qty)

£400 - £600

178

Richard Ansdell R.A. (British, 1815-1885), a gentleman reclining in a mountainous landscape after a day's shoot, flanked by a pair of dogs and the day's bag, a farm in the distance, signed R. Ansdell and dated 1856, oil on canvas, image 96 x 182 cm, frame 145 x 230 cm

£5000 - £8000

179

Keith English (20th Century), a man seated by cliffs with his dog, signed, oil on canvas, 60 x 80 cm

£100 - £150

180

18th century school, a horse and foal in a rural landscape, oil on panel, unsigned, unframed, 23.5 x 18 cm

£100 - £200

181

Robert Herdman R.S.A., R.S.W (Scottish 1829-1888), a young girl leaning on a terrace, looking pensively at the flowers in her hands, a stringed instrument and rosary also visible in the picture, monogrammed and dated 1866, watercolour, framed and glazed 33 x 26 cm

£300 - £500

182

Attributed to Utagawa Kunisada (1786-1865), a Japanese Woodblock print triptych depicting a gambler and a gang, framed and glazed, 52 x 39 cm each, paper labels verso

£100 - £200

183

Pamela Derry (British, b.1932), a view over a misty farmers field, oil on board, signed, 55 x 46 cm

£50 - £80

184

Zoltan Preiner (Hungarian b.1955) 'Riesling and Grapes' oil on board, gallery label verso, 53 x 43 cm

£150 - £200



Lot 178



Lot 180

185

Indian school 19th century,
a pair of miniature paintings on ivory, the first
depicting two women in a garden scene, the
other depicting a palace scene with drinking and
musicians,
framed and glazed, 31 x 20 cm & 24 x 19 cm

£100 - £200



Lot 181

186 - 200

Spare Lots



LOCKE & ENGLAND

AUCTIONEERS & VALUERS

LEAMINGTON SPA AUCTION CENTRE

Wednesday 24th April 2019
Valuation Day

Commencing 12 noon - 4pm



Our specialist team of valuers are happy to advise on all antique/collectable and jewellery items, for which no appointment is necessary.

Clients are invited to bring along items for complimentary auction advice without obligation. For larger items, we are happy to visit your home. – just call to make an appointment.

Entries currently invited for our specialist sales of Antiques, Jewellery, Books & Ephemera, Mid Century Design, Militaria, Wines & Spirits, Collectable Toys.

AUCTION ENTRIES INVITED

Leamington Spa Auction Centre 12 Guy Street, Leamington Spa, CV32 4RT
01926 889 100 or valuers@leauction.co.uk

www.leauction.co.uk

CERAMICS, GLASS
& WORKS OF ART



CERAMICS, GLASS AND WORKS OF ART

201

A 19th century blue and white jasperware cheese dome decorated in relief with foliage, h. 27 cm *£40 - £60*



Lot 202

202

A 19th century Chinese blue and white brush pot or vase of cylindrical form, decorated with scenes women and children in a garden scene. Double circle mark to base, h. 30 cm. *£80 - £120*

203

A Royal Doulton figure 'The Wardrobe Mistress' HN2145 *£30 - £50*

204

A Royal Worcester blush ivory figurine of an Irish woman in cape and bonnet carrying a basket. Date code for 1906, h. 15 cm *£150 - £200*

208

A collection of six Beswick Beatrix potter figures to include 'Peter Rabbit', 'Mrs Tiggy Winkle', 'Tailor of Gloucester', 'Aunt Pettitoes', 'Hunca Munca' and 'Cousin Ribby' *£50 - £80*



Lot 209

209

A 19th century Sunderland lustreware water jug decorated with transfer printed Masonic imagery and text, h, 18 cm *£100 - £150*

205

A Royal Worcester blush ivory pot porri together with a Royal Worcester twin handled vase and a Royal Worcester bowl of leaf design *£100 - £150*



Lot 207

206

A mislabelled Royal Doulton character jug modelled as the Mikado but labelled 'Falstaff' to base *£30 - £50*



Lot 203

210

A large late 19th century/ early 20th century Japanese Kutani jardiniere, h. 29 cm A/V *£80 - £120*

211

A Noritake coffee set comprising of six cups and saucers with six silver spoons, all contained in a fitted case *£50 - £80*

207

A German Heubach porcelain figure of an owl resting on a rock, h. 13 cm. *£100 - £150*



Lot 208



Lot 212

212

An early 20th century Japanese satsuma moon flask decorated with scenes of warriors, butterflies and children, mark to base, h. 40 cm
£40 - £60

213

A Walter Moorcroft Hibiscus pattern vase decorated on a green ground, h. 21.5 cm
£120 - £150

214

A green glass thimble with millefiori decoration to top, h. 1.8cm
£40 - £60

215

A Moorcroft Hibiscus pattern table lamp decorated on a green ground, h. 55 cm
£50 - £80

216

A Moorcroft Pomegranate lamp mounted on a wooden base, h. 57 cm
£100 - £150

217

A Moorcroft Anemone pattern pin dish decorated on a blue ground together with a similar tray
£30 - £50

218

A Maling Daisy pattern lustre bowl of flared form, dia 27 cm
£40 - £60



Lot 219

219

A Wedgwood lustre bowl decorated with dragons and oriental scenes, dia 16.5 cm
£40 - £60



220

A Sabino opalescent glass vase of squat form decorated in a leaf pattern, signed to base, h. 12.5 cm *£80 - £120*



Lot 224

221

A set of six Wedgwood 'Heartsease' pattern dinner plates designed by Edward Bawden for the Orient line, dia 24 cm *£200 - £300*

222

A late 19th century German porcelain part tea set by Fischer & Mieg with gilt floral and rim decoration against a blue and white background *£80 - £120*

224

A 18th/early 19th century Chinese export blue and white dish painted with a panel of prunus blossom, flowers and fruit within a narrow trellis border, dia. 42 cm *£200 - £300*



223

A 19th century Chinese blue and white baluster vase painted with plantain leaves and scrolls and bearing a pseudo Xuande mark to base. Together with a hardwood stand, h. 32 cm *£400 - £600*

Lot 223



Lot 225

225

A large early 19th century Chinese export blue and white charger painted with pagodas within a floral and trellis border, dia. 55 cm *£200 - £300*

226

A 19th century Chinese blue and white octagonal dish depicting a deer within woodland surrounded by a trellis border, together oval dish depicting a child and mother in the garden and one smaller example depicting a rural home scene *£100 - £150*

227

A collection of seven Chinese export blue and white plates decorated with various scenes to include pagodas, deer in woodland, rural scenes etc. *£80 - £120*

228

A collection of eleven pieces of 19th century Chinese export blue and white porcelain to include tureens, dishes, prunus vases, bowls etc. *£100 - £150*



Lot 229

229

A late 19th century glass apothecary jar having classical floral border decoration to the upper and lower body, h. 45 cm *£80 - £120*



230

A large Baccarat crystal 'Ginkgo' vase bearing original paper label to body and mark to base, h. 28.5 cm *£300 - £500*

231

A Baccarat crystal vase of ribbed tapering form, bearing original paper label to body and mark to base, h. 19.5 cm *£200 - £300*

232

An 18th century Georgian wine glass having a funnel shaped bowl above an opaque twist stem, h. 15 cm *£70 - £100*

233

An 18th century Georgian wine glass having a conical bowl above an opaque twist stem and a raised foot, h. 15 cm *£70 - £100*

234

A group of three 18th century Georgian wine glasses to include one with a trumpet shaped bowl and air bubble stem, one with a round bowl and plain elongated stem and one of tapering form.

£80 - £120



Lot 233



Lot 235

235

A late 19th century Moroccan polychrome urn of baluster form, h. 77 cm
£100 - £200

236

A late 19th century Moroccan urn decorated with inlaid lead in a grapevine pattern, later converted to a lamp. h. 77 cm
£150 - £250



Lot 236

237 - 299

Spare Lots

300

A Japanese Meiji period bronze planter having a gadrooned body with reliefs of birds in flight and resting on branches, h. 27 cm
£100 - £150

301

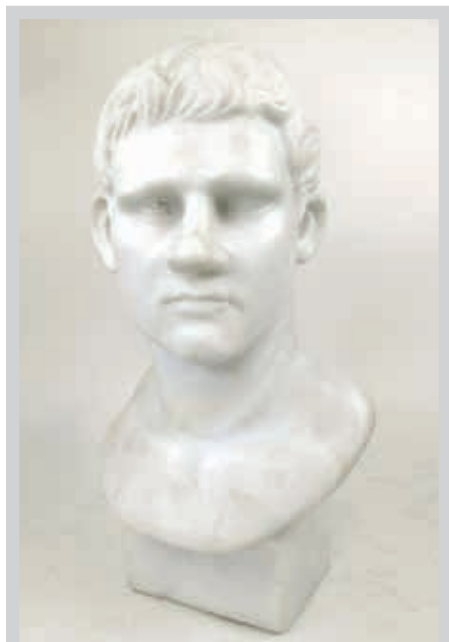
An early 20th century carved polychrome wooden figure of a sleeping baby, l. 50 cm
£100 - £150



Lot 300



Lot 301



302

A large late 19th century Italian marble bust of Marcus Junius Brutus, h. 60 cm

£300 - £500

303

A large early 20th century brass ships binnacle housing a Kelvin and Hughes compass, h. 39 cm

£100 - £150

304

An early 20th century eastern lacquered wooden pillow, l. 23.5 cm

£40 - £60

305

A large pair of early 20th century calamander elephants, h. 25 cm, l. 32 cm

£150 - £250

306

A late 19th century Japanese carved ivory clam shell, the interior depicting scenes of fishermen, signed to base.

l. 5.1 cm

£80 - £120



Lot 304

307

A Victorian tortoiseshell card case inlaid with mother of pearl flowers, l. 10 cm

£40 - £60



308

Rhetoricorum ad liber I, II & III (The books of Cicero). Printed in Latin on vellum. Published 1578.

£80 - £120

309

A early 20th century Chinese bronze foo dog with engraved decoration and inlaid stones, h. 19 cm

£30 - £50



Lot 305

310

A 19th century Chinese carved wooden foo dog modelled with paw resting on a ball, h. 25 cm

£40 - £60



Lot 311

311

A pair of early 20th century Chinese porcelain foo dogs, modelled in a prowling pose with gilt decoration, h.16 cm

£100 - £150



Lot 312

312

A pair of early 20th century Chinese terracotta foo dogs modelled with paws resting on a ball and a smaller creature. Mark to base, h. 11 cm

£50 - £80

313

A group of five 20th century Chinese carved and painted foo dogs modelled in various poses

£80 - £120



Lot 317



Lot 314

314

An early 20th century Merryweather brass fireman's helmet bearing a national fire brigade association badge to front and dragon motif to comb, h. 25 cm A/V

£100 - £200

315

A pair of late Victorian brass carriage lamps with mounting brackets, h. 42 cm

£40 - £60

316

An early 20th ships oil lamp with reflector and drip pan

£40 - £60

317

An early 20th century Japanese knife having a bamboo handle and sheath with bone fittings and carved foliate motifs, l. 24 cm

£50 - £80

318

A Victorian pin cushion with studded decoration surrounding the text: 'Heaven Bless thee Sweet Babe', together with a small vanity pouch and note book cover

£40 - £60

319

A Chinese metal foo dog incense burner with filigree decoration and inlaid stones, h. 12 cm

£40 - £60

320

A 20th century Chinese carved jade foo dog, h. 11 cm
£100 - £150



Lot 321

321

A 20th century Chinese carved jade figural group of two foo dogs at play, h. 8.5 cm
£150 - £250

322

Mask: 'Switchblade' Venom helicopter/ aeroplane with action figure by KennerParker 1985
£40 - £60

323

Mask: 'Rhino' tractor rig/mobile defence unit with two action figures by KennerParker 1985
£40 - £60

324

Mask: 'Piranha' Venom motorcycle/submarine with action figure, 'Condor' motorcycle/ helicopter with action figure and 'Vampire' touring cycle/turbo jet with action figure by KennerParker 1985
£40 - £60

325

Mask: 'Firecracker' pickup/reconnaissance truck with action figure by KennerParker 1985
£30 - £50

326

Mask: 'firefly' dune buggy/rocket glider with action figure and 'Hurricane' '57 Chevy field command post with action figure by KennerParker 1985
£30 - £50

327

Mask: 'Raven' Corvette/armed seaplane with action figure and 'Jackhammer' Venom 4X4 assault vehicle with action figure by KennerParker 1985
£30 - £50

328

Mask: unboxed 'Boulder Hill' innocent service station becomes an awesome battle-ready bunker with two action figures by KennerParker 1985
£50 - £80

329

Centurions: four action figures and two boxed vehicles 'Wild Weasel' and 'Depth Charger' along with an assortment of accessories £40 - £60

330

Transformers: An unboxed Optimus Prime, boxed autobot cavalier 'Hot Rod', boxed autobot agent 'Jazz' (arm missing), boxed decepticon 'Dirge and one other £80 - £120

331

An incomplete boxed 'Nintendo' entertainment system, including control deck, two controllers and unassociated leads
£70 - £100

332

A J.Steiner bisque headed doll with brown eyes, blonde wig and articulated composition body, dressed in summer apparel and marked 'Figure A.18, J.Steiner Bn S.G.D.G Paris' to back of neck. l. 58 cm. £100 - £200

333

A 'Baby Gloria' bisque headed doll with blue open eyes and a fabric body, together with one other bisque headed doll with brown eyes and painted tears marked 'HLT' and 'W' to the back of the neck. l. 48 cm
£40 - £60



Lot 332



Lot 338

334

A small black bisque doll with open brown eyes and open mouth marked 'Demi 1992 (?)' to the back of neck, l. 20 cm

£20 - £30

335

A WWI medal trio issued to lieutenant/captain J.A.N Scott R.A.M.C, together with spare ribbons and two other ribbons

£50 - £80

338

An early 19th century percussion cap blunderbuss, the barrel with flared muzzle and proof marks to side. A/F

£300 - £500



Lot 336

336

A WWI German Luftwaffe 2nd Pattern officers dagger with sheath, knot and hanger. The blade marked 'A.Schuttelhofer & Co'

£200 - £300



Lot 339

339

Three pilots flying log books relating to lieutenant Eric Wormell of the RAF, covering the latter stages of WWI, the inter war period and early stages of WWII (20th July 1917- 7th June 1940). Accompanied by a selection of other ephemera to include a training brigade transfer card and a service and release book. Also included is a copy of 'The Letters of T.E Lawrence' purportedly signed by T.E Lawrence's mother (Eric Wormell apparently served with Lawrence during his time in the RAF)

£200 - £400

337

A WWI British Mills bomb marked 'Falkirk 10-16' and 'No.23 Mk I' to base. Complete with detonator cap and pin etc. Inert.

£70 - £100



Lot 337



Lot 340

340

A 19th century cavalry troopers iron breast plate with medial ridge and brass rivets, h. 38 cm

£80 - £120



Lot 341

341

A WWII German navy 3.7cm S.K C/30 anti-aircraft gun manual, published in Berlin, 1941 by German naval high command.

£40 - £60

342

A late 17th century/early 18th century rush nip light, the wrought iron arm mounted on an oak base block, h. 27 cm

£100 - £150



Lot 343

343

A late 19th century walnut tilt top apprentice table the top with boxwood and ebony inlay above a turned column and tripod base, h. 14 cm

£70 - £100

344

A collection of 100 delPrado 'Nepoleon At War' lead soldiers along with associated magazines, 2002 & 2003

£150 - £250



345

A collection of 120 delPrado 'Cavalry Of The Napoleonic Wars' lead soldiers on horseback with 97 associated magazines and two cannons

£200 - £300

346 - 399

Spare Lots



LOCKE & ENGLAND
AUCTIONEERS & VALUERS

TO BE SOLD BY AUCTION

Thursday 30th May 2019
**Antique Furniture &
Collectors' Items**

Commencing at 11.00am



Thursday sales of Antiques and Collectors items are held bi-monthly at our Leamington Spa saleroom. These sales incorporate a range of Antique Furniture, Pictures, Ceramics & Glass, Silver, Metalware, Boxes and Caddies, Militaria and other collector's items are offered for sale.

**Viewing: Saturday 25th May - 10am - 2pm, Tuesday 28th May - 9am - 5pm
Wednesday 29th May - 9am - 7pm, Morning of sale from 9am**

AUCTION ENTRIES INVITED

Leamington Spa Auction Centre 12 Guy Street, Leamington Spa, CV32 4RT
01926 889 100 or valuers@leauction.co.uk

www.leauction.co.uk

SILVER & PLATE



SILVER & PLATE

400

An Art Deco silver plated tea and coffee set of angular form with ebonised handles and finials. Comprises of teapot, coffee pot, milk jug, sugar bowl and tray. *£80 - £120*



401

A WMF silver plated basket having pierced Art Nouveau decoration with a hammered finish and a green glass liner, h. 30 cm

£40 - £60

402

A large ornate Mappin & Webb 'King Francis' silver plated spirit kettle together Mappin & Webb silver plated servicing bowl and water jug, h. 40 cm *£80 - £120*

403

A contemporary silver salver with scrolling clam shell rim and ball and claw feet. Hallmarked for Birmingham, 1985. Approx weight 544g *£180 - £220*



Lot 403

404

A white metal mounted decanter of tapering form with ornate scrolling and pierced floral decoration, h. 26 cm *£80 - £120*

£80 - £120

405

A silver twin handled cup together with three silver ashtrays. Various hallmarks. Approx weight 326g *£80 - £120*

£80 - £120

406

A cased silver napkin ring pair together with a cased pair of silver salts and a silver candlestick. Various hallmarks. *£30 - £50*

£30 - £50

407

A matched silver dressing table set with embossed cherub design together with one other silver dressing set. Various hallmarks. *£50 - £80*

£50 - £80



Lot 404

408

A selection of silver flatware to include Georgian table spoons, napkin ring, tea spoon etc. Various hallmarks. Approx weight 350g

£80 - £120



Lot 409

409

A George III silver teapot of oval form, decorated in a neo classical manner with engraved floral swags and heraldic devices. Together with a later matching George III teapot stand. Teapot hallmarked for London, 1786, makers mark Thomas Chawner. Approx weight 608g

£300 - £400

410

A large Edwardian silver goblet having gadrooned decoration to lower body and presentation inscription to upper body, together with a George V silver goblet also with presentation inscription. Hallmarked for Birmingham, 1910 & Sheffield, 1917. Approx weight 496g

£100 - £150



Lot 411

411

A George V silver tray with embossed swags and pierced corners. Hallmarked for Birmingham, 1911. Approx weight 522g

£100 - £150

412

A George V silver twin handled cup together with a George V silver trophy, both bearing ploughing related inscriptions. Various hallmarks. Approx weight 565g

£100 - £150

413

A George V silver tea set of squat form on pad feet. Hallmarked for Sheffield, 1931. Approx weight 1290g

£400 - £500

414

A large Elizabeth II silver photo frame having engine turned decoration to frame and scrolling engraving to corners. Hallmarked for London (imported), 1978. h. 26.5 cm

£50 - £80



Lot 413

415

Three assorted Elizabeth II silver photo frames having engine turned decoration to frame and scrolling engraving to corners. Various hallmarks. H. 20.5 cm *£70 - £100*

416

Two Elizabeth II silver photo frames, the embossed silver panels on velvet backings. H. 18 cm *£30 - £50*



Lot 417

417

An Elizabeth II silver photo frame having a hammered finish with scalloped motifs together with one other silver photo frame. H. 15 cm *£40 - £60*



Lot 418

418

A George III silver tea caddy having an oval gadrooned body with armorial engraving to lid. Hallmarked for London, 1786. Approx weight 526g *£300 - £400*

419

An Edwardian silver bowl of sectioned form. Hallmarked for Sheffield, 1903. Approx weight 284g *£70 - £100*

420

A selection of silver and white metal pill boxes to include a sweet shaped pill box, a heart shaped pill box repousse decorated examples etc. *£100 - £120*

421

A selection of scent bottles to include silver topped examples, eastern filigree examples, tigers eye scent bottle etc. *£100 - £150*



Lot 420

422

A Victorian silver sugar basket of plain form. Hallmarked for Sheffield, 1899. Approx weight 122g
£50 - £80

428

A pair of Elizabeth II salt and pepper mills together with a larger salt mill. Various hallmarks. Approx weight 375g
£50 - £80

423

A pair of George V silver sauce boats having a Greek key design. Hallmarked for Sheffield, 1923. Makers mark for Walker & Hall. Approx weight 289g
£120 - £150



424

A George III silver mustard pot having a gilt interior. Hallmarked for London, 1808. Approx weight 115g
£50 - £80

429

A selection of silver items to include napkin rings, salt shaker, silver cased pocket comb, silver brush, vesta case, mother of pearl inlaid cigarette case etc. Various hallmarks. Approx weight 245g
£60 - £80



Lot 425

430

A large selection of silver flatware to include five fish knives with silver plated pieced blades, six forks and two sets of four and one set of five butter knives. Various hallmarks.
£70 - £100

425

A pair of George III silver salts with pierced column sides and clear glass liners. Hallmarked for London, 1775, makers mark Robert Hennell. Approx weight 91g
£180 - £220

431

A Georg Jensen silver 'cactus' spoon, l. 14.5 cm
£60 - £80

426

An Edwardian silver bonbon dish having embossed decoration together with an Elizabeth II Irish silver bonbon dish having pierced decoration and a Victorian heart shaped trinket box. Various hallmarks. Approx weight 128g
£50 - £80

432

A white metal twin handled trophy of flared form marked 'silver'. Approx weight 122g
£30 - £40

427

A large Edwardian silver sugar bowl having a plain body and a gilt interior. Hallmarked for Sheffield, 1920. Approx weight 286g
£80 - £120



Lot 431

433

An early 20th century eastern white metal plate with embossed hunting scenes. Approx weight 284g
£70 - £100



Lot 433

434

A white metal filigree model of a rickshaw together with one of a cattle drawn cart and one of a stilted house, h. 13.5 cm *£50 - £80*

435

A white metal mounted wooden tankard together with an Art Deco silver desk calendar and a pair of Georgian silver gilt sugar nips *£40 - £60*



Lot 436

436

An Argentinean white and yellow metal Gaucho knife with chased decoration and a blade by Heinr. Boker & Co. Marked 'Ind.Arg. Alpaca' to back *£60 - £80*



Lot 437

437

A large silver pedestal bowl with embossed floral decoration and vacant cartouches. Hallmarked for Sheffield, 1901. Approx weight 428g *£100 - £150*

438

A silver cigarette box together with two silver mugs. Various hallmarks. Approx weight 804g gross. A/V *£100 - £150*

439

Two silver pedestal bowls with pierced decoration, together with one other silver bowl and a white metal bon-bon dish. Various hallmarks. Approx weight 341g *£80 - £120*

440

An assortment of silver items to include napkin rings, salt and pepper pots, cigarette case, compact, coin dish etc. Various hallmarks. Approx weight 506g *£100 - £150*

441

An assortment of silver items to include a pair of silver candlesticks, salts, pepper pots, mustard pot, napkin ring and a table spoon etc. Various hallmarks. *£60 - £80*

442

An assortment of Georgian and later silver flatware to include table spoons, sugar tongs, coffee spoons etc. Various hallmarks. Approx weight 571g *£150 - £200*

443

A large assortment of Georgian and later silver spoons and forks. Various hallmarks. Approx weight 1430g *£350 - £450*



444

A matched set of ten silver table forks and spoons by Walker & Hall. Hallmarked for Sheffield, various dates. Approx weight 1030g *£280 - £350*

445 - 459

Spare Lots

COINS, JEWELLERY
& WATCHES



COINS, JEWELLERY & WATCHES



460

A 2018 Royal mint premium proof coin set with box and paperwork *£70 - £100*

461

A 1892 Queen Victoria full sovereign in presentation case with certificate *£180 - £220*

462

A 'The Centenary of World War I Solid Gold Coin Collection' consisting of three 9ct gold commemorative coins *£30 - £50*

463

An 1887 Queen Victoria 'withdrawn' silver sixpence in presentation case together with a Queen Elizabeth II coronation jubilee coin and stamp set *£40 - £60*

464

A George V full sovereign dated 1911 *£180 - £220*

465

A George V half sovereign dated 1912 *£80 - £120*

466

A George V half sovereign dated 1914 *£80 - £120*

467

A Queen Victoria half sovereign dated 1899 *£80 - £120*

468

A Queen Victoria full sovereign dated 1871 *£180 - £220*

469

A George V full sovereign dated 1908 *£180 - £220*

470

A George V full sovereign dated 1916 *£180 - £220*

471

A Queen Victoria full sovereign dated 1893 *£180 - £220*



Lot 471

472

A Queen Elizabeth II full sovereign dated 1980
£180 - £220

473

A George V full sovereign dated 1926
£180 - £220

474

A Queen Elizabeth II full sovereign dated 1959
£180 - £220

475

An Antoninus Pius Roman coin, the reverse depicting Victory, together with a Commodus Roman coin, the reverse depicting a figure, max dia 32 mm
£60 - £80

476 - 499

Spare Lots

500

A late Victorian 18ct gold and striped agate ring, approx weight 6.5g
£120 - £180



Lot 500



Lot 501

501

An 18ct gold diamond and sapphire cluster ring having three sapphires surrounded by illusion set diamonds. Approx weight 4g
£180 - £220



Lot 502

502

An Art Deco 18ct gold sapphire and diamond ring, the central square cut sapphire flanked by three old cut diamonds. Approx weight 4g
£100 - £150

503

A platinum wedding band with engraved floral decoration. Approx weight 6.1g
£80 - £120



Lot 504

504

An 18ct gold signet ring inset with seed pearls in the form of the letter 'P' together with one similar 18ct ring inset with garnets. Approx weight 17.5g
£300 - £400

505

A Victorian 15ct gold seed pearl ring together with a thin 22ct gold band ring. Approx weights 1.8g & 1.8g
£60 - £80

506

A group of four rings to include a 14ct gold sapphire and diamond trilogy ring, a 9ct gold ruby and diamond ring, a 9ct gold CZ solitaire ring and a 9ct gold sapphire and CZ cluster ring. Approx weight 7.9g
£80 - £120

507

A group of six rings to include a 9ct gold and pearl statement ring, a 9ct gold and topaz ring, a 9ct gold cameo ring, and a modernist style yellow metal ring having a green square cut stone etc. Approx weight 26.6g
£250 - £350

508

A group of five rings to include an 18ct gold five stone diamond ring, an engraved 9ct gold band ring, a clear stone cluster ring etc. A/F. Approx weight 14g
£120 - £180

509

A group of four rings to include a 14ct gold rose quartz ring, a 14ct gold mounted John F. Kennedy coin ring, an 18ct gold garnet cluster ring etc. Approx weight 14.9g
£180 - £220

510

A group of seven various yellow metal rings originating mainly from the middle east. Approx weight 23.6g *£300 - £400*

511

A pair of 18ct white gold diamond stud earrings, total carat weight approx 0.2ct *£50 - £80*



Lot 512

512

Two yellow metal diamond stud earrings, each brilliant cut stone approximately 0.25ct and 0.2ct respectively *£70 - £100*



513

A 9ct gold tourmaline and diamond necklace set with pear and oval cut stones in a triangular shaped setting, interspaced with diamonds. Approx weight 8g *£200 - £300*



Lot 514

514

An Edwardian 15ct gold and peridot brooch, the central stone surrounded by scrolling wirework decoration and enclosed by a ring of outer stones. Approx weight 4.2g *£70 - £100*

515

A Victorian yellow metal mounted carved shell cameo depicting two classical figures in profile, l. 5.5 cm *£40 - £60*

516

A yellow metal flower brooch marked '18k' together with a 9ct gold smoky quartz ring. Approx weights 11.1g & 2.1g *£200 - £250*

517

A Georgian yellow metal citrine and pearl brooch together with a 9ct gold centurion signet ring and a silver and enamel fob watch A/F *£150 - £200*

518

An assortment of 9ct gold and yellow metal items to include Georgian brooches, broken chains, watch straps etc. Approx weight 28.8g *£200 - £300*



Lot 516 (part)

519

A large Victorian yellow metal brooch set with a large orange stone together with a Victorian yellow metal and turquoise brooch and a 9ct gold diamond and sapphire bow brooch

£100 - £150

520

An assortment of 9ct gold items to include a locket on chain, a diamond pendant and a four bar gate link bracelet. Approx weight 11.1g

£100 - £150

521

A 9ct gold fancy link necklace with matching bracelet, together with a 9ct gold belcher link necklace and a 9ct gold double belcher link bracelet. Approx weight 16g

£150 - £200

522

An assortment of 9ct gold items to include, a pair of Creole earrings, a thin figaro link bracelet, a rope twist and trombone link bracelet and one other bracelet. Approx weight 8.4g

£80 - £120

523

An assortment of 9ct gold and yellow metal items to include a Baume watch, an amethyst ring, citrine bangle and various other rings A/F. Approx weight 43g

£200 - £300



525

A 9ct rose gold double Albert chain with Masonic fob together with one smaller Masonic fob. Approx weight 62.2g

£500 - £800



Lot 524

524

A platinum and diamond bridal ring set consisting of an engagement ring, the 0.25ct central diamond surrounded by two rings of smaller diamonds and flanked by diamond set shoulders, together with a matching fifteen stone diamond wedding band. Total carat weights stated as 0.785 & 0.215 respectively

£500 - £800

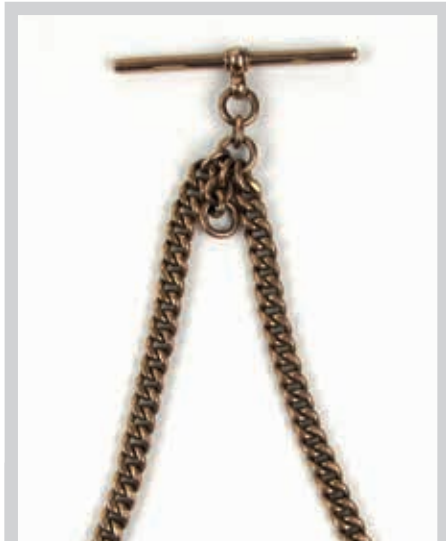


526

An 18ct gold trombone link double Albert chain together with a 9ct gold Masonic fob. Approx weights 73.6g & 2.1g

£1400 - £1800

Lot 526



527

A 9ct rose gold double Albert chain. Approx weight 30.6g £300 - £500

528

A part 9ct gold double Albert chain A/F together with a 9ct gold and pearl stick pin. Approx weight 15.6g £100 - £150

529

A rolled gold fob hanger suspending a 9ct gold Masonic seal fob, l. 13.5 cm £40 - £60



Lot 530

530

A set of three 18ct gold and diamond rings comprising of a 0.5ct marquise cut solitaire ring, a slotted two diamond stacking ring and a similar three stone diamond ring. Approx weight 12.5g. TCW approximately 1.20ct £800 - £1200



Lot 531

531

A 18ct gold diamond solitaire ring, the old cut stone approximately 0.75ct in weight.

£300 - £400



Lot 532

532

An 18ct gold diamond solitaire ring, the 0.15ct stone in a six claw setting. Approx weight 2.4g

£70 - £100

533

A late 19th century 18ct gold and platinum diamond and sapphire ring, the central diamond flanked by two sapphires and four smaller diamonds. Approx weight 2.3g £100 - £150



534

An early 20th century yellow metal diamond cluster ring, the central old cut stone surrounded by eight smaller diamonds. Approx weight 3.1g. Approx TCW 1ct

£400 - £600

535

A 9ct gold diamond and ruby cluster ring, the central stone surrounded by six rubies with diamond shoulders. Approx weight 2.8g £80 - £120



Lot 535

536

A selection of gold and yellow metal items to include a Victorian 15ct gold and striped agate brooch, a yellow metal bracelet, a yellow metal signet ring and a yellow metal cased ladies watch. Approx weight 20.7g £200 - £250

537

A 9ct gold amethyst ring, the oval cut stone in a raised claw setting together with a yellow metal and pink stone ring and a 9ct gold cameo pendant. Approx weight 13.8g £100 - £150

538

A selection of 9ct gold and yellow metal items to include earrings, chains, flower stick pin etc. Approx weight 8.4g £70 - £100

539

A 9ct gold cross on chain together with a pair of 9ct gold earrings and a white metal eternity ring. Approx weight 5.8g £40 - £60



541

A yellow and white metal diamond encrusted brooch modelled in the form of a bird. Approx weight 5.7g £200 - £300



Lot 540

540

A large yellow metal mounted carved shell cameo depicting a classical scene enclosed by a double serpent mount, l. 6.2 cm £150 - £200



542

An early 20th century 15ct gold and opal necklace, the main fiery opal suspended from one smaller opal. Approx weight 3.2g £100 - £150

543

A selection of north African yellow metal items to include bangles, filigree crosses, brooch etc. Approx weight 72.3g £700 - £1000



Lot 543 (part)



545

A yellow metal sequin style bracelet having stylised clasp set with red and white stones. Approx weight 27.9g £550 - £750



Lot 546



544

A 14ct gold sequin style bracelet having a stylised clasp set with turquoise, approx weight 37.8g £600 - £800

546

Three late 19th century Scottish white metal and agate brooches £80 - £120



Lot 545



Lot 547

547

A Georg Jensen Danish silver brooch depicting a hummingbird, w. 4.5 cm *£120 - £180*

548

A large assortment of silver, white metal and yellow metal items to include brooches, agate pendant, chains, bracelets, earrings etc. Approx weight 480g *£120 - £180*

549

A Waltham USA silver half hunter pocket watch together with a silver double albert chain and fobs *£70 - £100*

550

A gentleman's 9ct gold cased mechanical wristwatch with textured dial and Arabic numerals, retailed by Sylvesters of Coventry *£70 - £100*

551

A ladies 9ct gold Longines wristwatch with box and paperwork. Approx weight 24.2g *£120 - £180*



Lot 553 (two images)



Lot 552

552

An 18ct gold fob watch, the yellow metal dial with Roman numerals and an engraved central floral motif. Approx weight 40.1g *£300 - £400*

553

An early 19th century yellow, enamel and pearl pocket watch. The fusee movement by Barrauds of Cornhill, London contained within an open face yellow metal case adorned with outer rings of pearls, enamel and guilloche enamel to reverse. Complete with a period case and some hand written notes. Dia. 5 cm *£800 - £1000*



554

An 18ct gold open faced pocket watch having a yellow metal dial with Roman numerals, a seconds sub dial and engraved central floral decoration. Hallmarked for London, 1857. Approx weight 92.4g

£500 - £600

555

A 14ct gold fob watch having a gilt decorated enamel dial, together with a gold plated full hunter pocket watch A/V

£100 - £150



Lot 557

557

A 9ct gold Waltham USA full hunter pocket watch. Hallmarked for Birmingham, 1925. Approx weight 92.7g

£300 - £500

558

A silver full hunter Dubois pocket watch together with a single albert chain and fob

£70 - £100



556

A 9ct gold Waltham USA full hunter pocket watch. Approx weight 115.2g

£400 - £600





Lot 559

559

A 10ct gold Waltham mass fob watch together with a 9ct gold trombone link double albert chain suspending a silver coin fob. Approx weight 84.6g *£250 - £300*

560

An assortment of silver pocket watches to include a Waltham half hunter pocket watch, a silver framed pocket watch, a Waltham mass, Kays fob watch etc. A/F *£150 - £200*

561

A ladies 9ct gold Longines mechanical wrist watch, approx weight 19g *£100 - £150*

562

A Victorian Waltham Mass open faced silver pocket watch on a base metal albert chain, together with a F.E Roskopf pocket watch on a yellow metal albertina. A/F *£50 - £80*

563 - 564

Spare Lots



Lot 565

565

Two modernist silver rings of abstract design. Hallmarked for London, 1972, makers mark 'NM' *£30 - £50*



Lot 566

566

An 18ct white gold sapphire and diamond cluster ring, the approximately 1ct central blue sapphire surrounded by approximately 0.5ct of diamonds *£500 - £800*

567

An Edwardian 9ct rose gold blue stone boat style ring. Approx weight 2.7g *£60 - £80*

568

A Victorian 18ct gold diamond and sapphire ring, the central old cut sapphire flanked by two diamonds and two smaller sapphires. Approx weight 2.5g *£70 - £100*

569

A 9ct gold curb link chain together with a yellow metal ring having engraved floral decoration. Approx weight 8.6g £40 - £60

570

A set of graduated butterscotch amber style beads, l. 73 cm £100 - £150

571

An early 20th century single strand pearl necklace, l. 125 cm £80 - £120

572

A Chinese Jade bead necklace together with one similar jade and natural pearl necklace and a jade and yellow metal heart pendant £40 - £60



Lot 571



Lot 570

573

A pale green jade bangle, internal dia. approx 6 cm £50 - £80

574

A 14ct gold and jade necklace, the fancy link chain interrupted by orange beads and suspending a pale green and orange piece of carved jade £100 - £150

575

An assortment of loose gemstones to include rubies, topaz etc. £30 - £50

576

A pale green and orange jade bangle, internal dia. approx 5.8cm £80 - £120

577

A dark green jade bangle, internal dia. approx 6 cm *£80 - £120*

578

A pale and dark green jade bangle, internal dia approx 5.9cm *£80 - £120*

579

A dark green jade bangle, internal dia. approx 5.8cm *£80 - £120*

580

A dark green jade bangle, internal dia. approx 5.9cm *£80 - £120*



581

A dark green jade bangle, internal dia. approx 5.8cm *£80 - £120*

582

A dark green jade bangle, internal dia. approx 5.9cm *£80 - £120*

583

A green jade bangle, internal dia. approx 6.2cm *£80 - £120*

584

A green jade bangle, internal dia. approx 6.2cm *£80 - £120*

585

A dark green jade bangle, internal dia. approx 5.9cm *£80 - £120*

586

A green jade bangle, internal dia. approx 6.3cm *£80 - £120*

587

A pale green and yellow jade bangle, internal dia. approx 5.9cm *£80 - £120*

588

A green jade bangle, internal dia. approx 6.2cm *£80 - £120*

589

A dark green jade bangle, internal dia. approx 5.9cm *£80 - £120*

Valuation Service

Should you require valuation advice or wish to consign items for our Fine Art Sales please contact us on 01926 889 100 or email us an image info@leauction.co.uk

www.leauction.co.uk



HAMMER PRICES - JANUARY 2019

1	£ 500	27	£ 40	155	£ 50	204	£ 260	314	£ 95	341	£ 70	404	£ 80
2	£ 110	28	£ 160	156	£ 140	205	£ 320	315	£ 160	342	£ 40	405	£ 60
3	£ 500	29	£ 160	158	£ 200	206	£ 50	316	£ 65	343	£ 120	406	£ 60
4	£ 80	30	£ 700	159	£ 130	207	£ 50	317	£ 65	344	£ 45	407	£ 50
6	£ 120	31	£ 50	160	£ 35	208	£ 340	318	£ 110	345	£ 220	408	£ 130
7	£ 60	32	£ 500	161	£ 200	211	£ 35	319	£ 800	346	£ 130	409	£ 120
9	£ 90	33	£ 200	162	£ 95	212	£ 40	320	£ 100	347	£ 30	410	£ 70
10	£ 120	34	£ 200	163	£ 180	214	£ 40	321	£ 35	348	£ 40	411	£ 60
11	£ 30	35	£ 75	164	£ 1200	215	£ 200	322	£ 70	349	£ 30	423	£ 60
12	£ 85	36	£ 80	165	£ 60	216	£ 240	326	£ 120	350	£ 460	424	£ 55
13	£ 160	37	£ 170	166	£ 120	300	£ 150	327	£ 65	351	£ 65	425	£ 55
14	£ 280	38	£ 100	167	£ 120	301	£ 150	328	£ 85	352	£ 400	426	£ 45
15	£ 1200	39	£ 50	168	£ 100	302	£ 380	329	£ 65	353	£ 600	427	£ 55
16	£ 190	50	£ 7000	169	£ 420	303	£ 80	330	£ 130	354	£ 65	428	£ 140
17	£ 200	51	£ 4200	170	£ 50	304	£ 40	331	£ 170	355	£ 40	429	£ 70
18	£ 550	60	£ 200	171	£ 180	305	£ 60	332	£ 45	356	£ 20	430	£ 130
19	£ 80	80	£ 300	172	£ 280	306	£ 80	333	£ 45	357	£ 70	431	£ 110
20	£ 750	82	£ 180	173	£ 1400	307	£ 65	334	£ 130	358	£ 70	432	£ 80
21	£ 950	83	£ 155	174	£ 130	308	£ 75	335	£ 35	359	£ 70		
22	£ 950	85	£ 80	177	£ 100	309	£ 30	336	£ 55	360	£ 130		
23	£ 420	151	£ 100	179	£ 75	310	£ 95	337	£ 750	361	£ 300		
24	£ 80	152	£ 50	200	£ 100	311	£ 120	338	£ 160	400	£ 30		
25	£ 260	153	£ 80	202	£ 40	312	£ 120	339	£ 40	402	£ 80		
26	£ 80	154	£ 80	203	£ 200	313	£ 35	340	£ 26	403	£ 75		



LOCKE & ENGLAND

AUCTIONEERS & VALUERS

Auction Sales & Valuations

Your local valuation, collection & auction service of individual items through to complete property clearances.

Call for a free no obligation collection quote.

Auction Every Thursday
Forthcoming Sale Entries Invited

12 Guy Street, Leamington Spa, CV32 4RT
01926 889 100 info@leauction.co.uk
www.leauction.co.uk



ENTRIES NOW INVITED

For our next specialist auction of Antiques and Collectable's at the Leamington Spa Auction Centre

AUCTION Highlights



A 1954 Ariel Square Four motorbike, 1000 cc, registration No. DS 6552, with V5, frame No. KR444, engine No. PL351. Odometer showing 12051 miles. The bike was assembled from parts all or some of which were not new when assembled when registered. Not in working order.

Hammer Price £7,000



A Victorian mahogany extending dining table, the moulded top over an octagonal section column and platform base which splits in half when extended to take the two extra leaf's, h. 75 cm, max. l. 267 cm, d. 133 cm

Hammer Price £1,200

Terms used in this catalogue have the following meanings.

Please note that all statements in this catalogue, regarding authorship, attribution, origin, date, age, provenance and condition are statements of opinion and are not treated as a statement of fact.

1. A N ARTIST

In our opinion, the work is by the artist.

2. ATTRIBUTED TO A N ARTIST

In our opinion, the work is of the period of the artist which may be whole or in part the work of the artist.

3. STUDIO, (CIRCLE OR WORKSHOP) OF A N ARTIST

In our opinion, the work is of the period and closely relates to his style.

4. SCHOOL OF A N ARTIST

In our opinion, the work is by a pupil or a follower of the artist.

5. MANNER OF A N ARTIST

In our opinion, the work is in the style of the artist and is of a later period.

6. AFTER A N ARTIST

In our opinion, this work is a copy of the artist.

7. ASCRIBED TO A N ARTIST

In our opinion, this work is not by the artist, however, previous scholarship has noted this to be a work by the artist.

8. SIGNED (OR DATED)

The work has a signature (or date) which is in our opinion is genuine.

9. BEARS SIGNATURE (OR DATE)

The work has a signature (or date) which in our opinion is not authentic.

Notes
